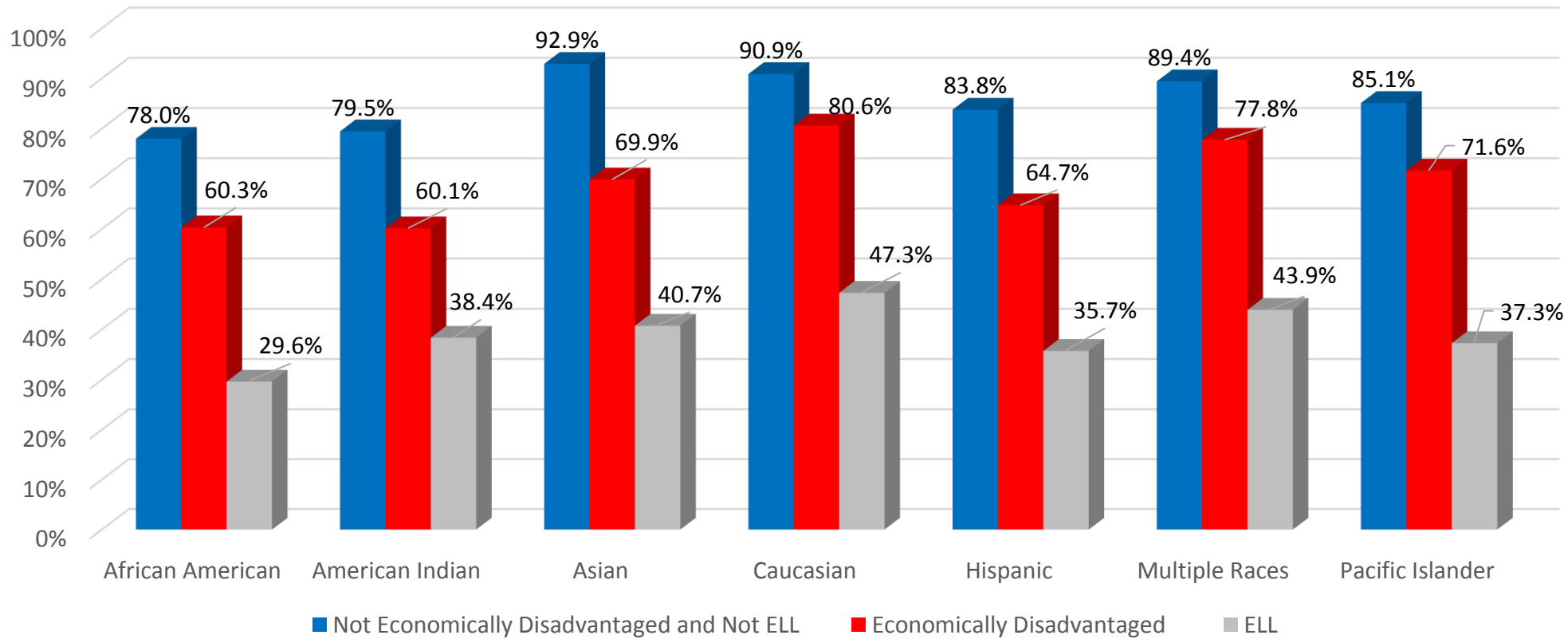


# Demographic Characteristics of Utah School Districts and Charter Schools

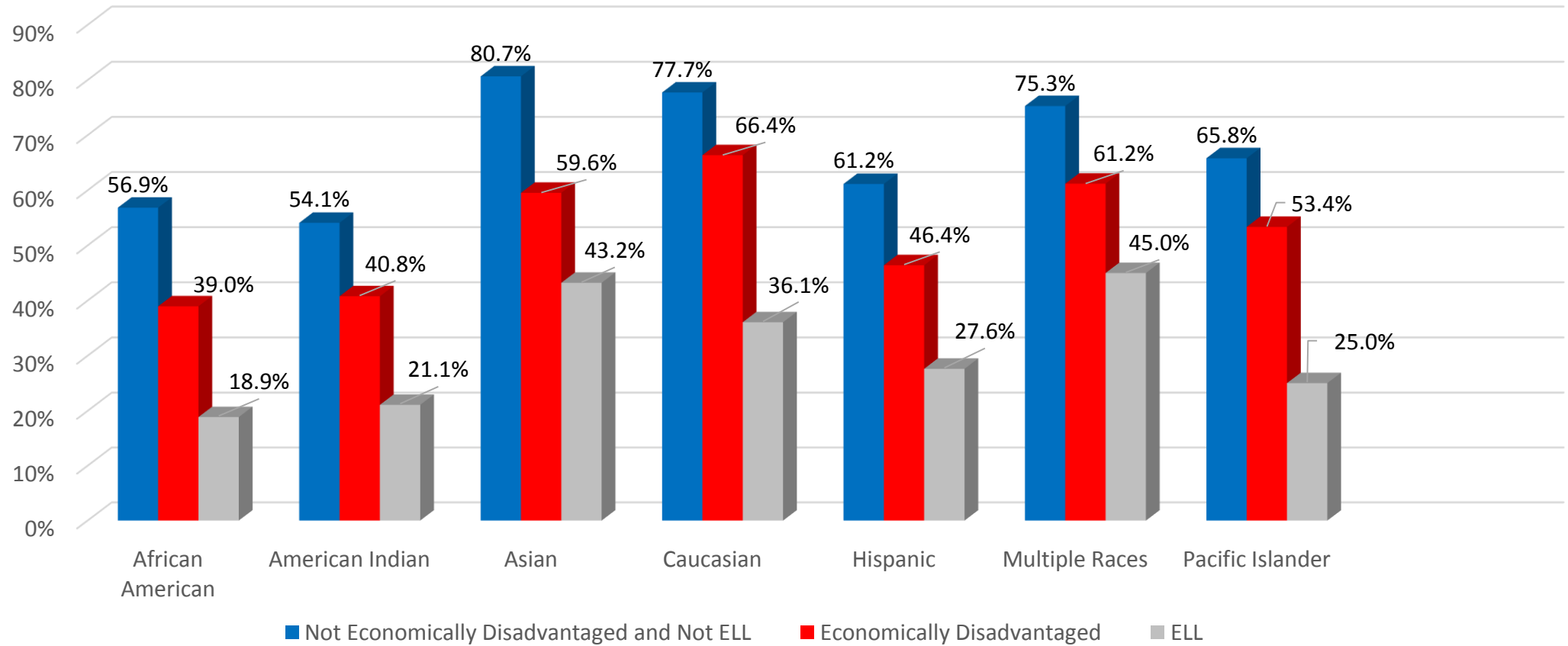
Education Interim Committee

September 18, 2013

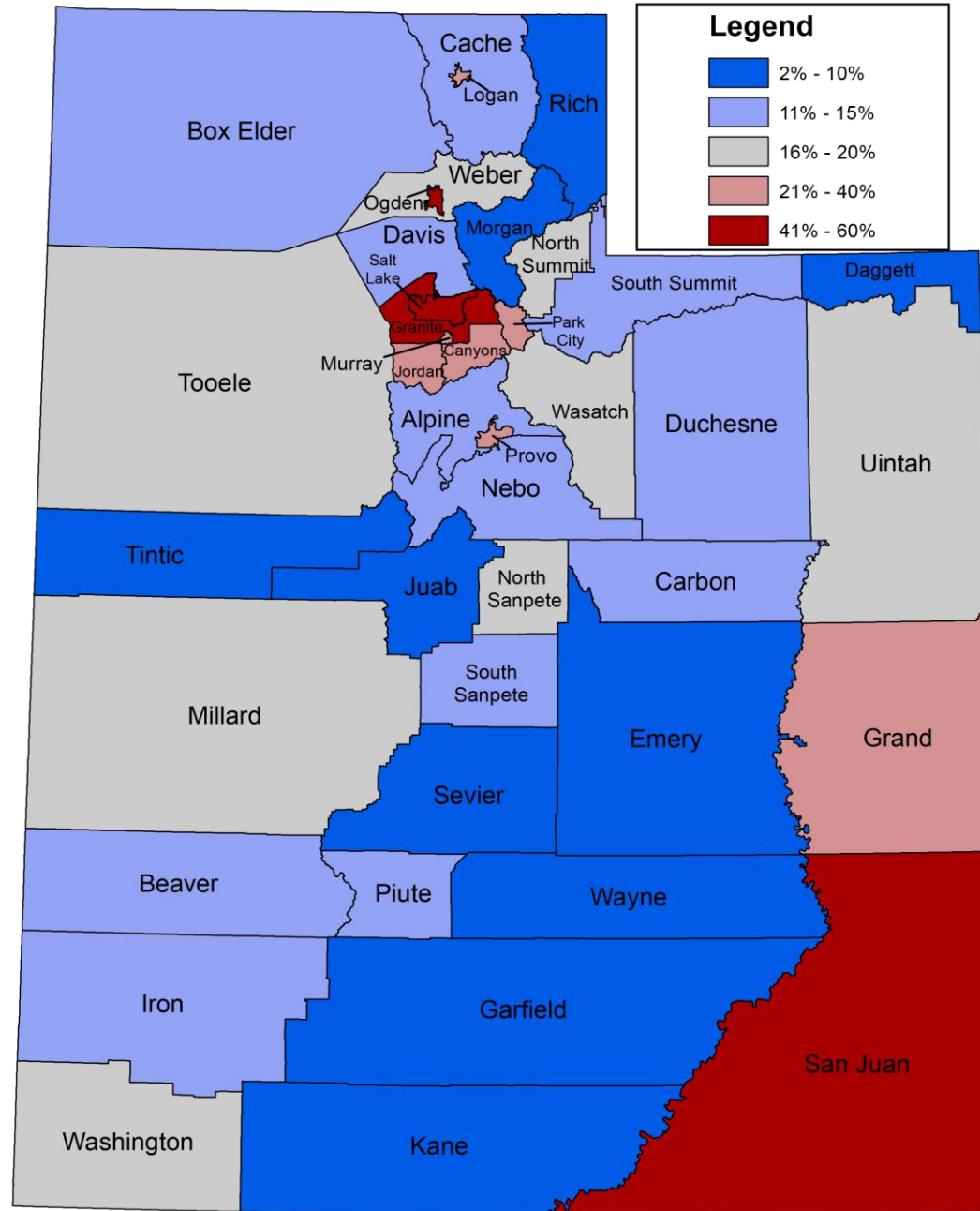
# Percent of Students Proficient on 2012 English Language Arts CRTs



# Percent of Students Proficient on 2012 Mathematics CRTs

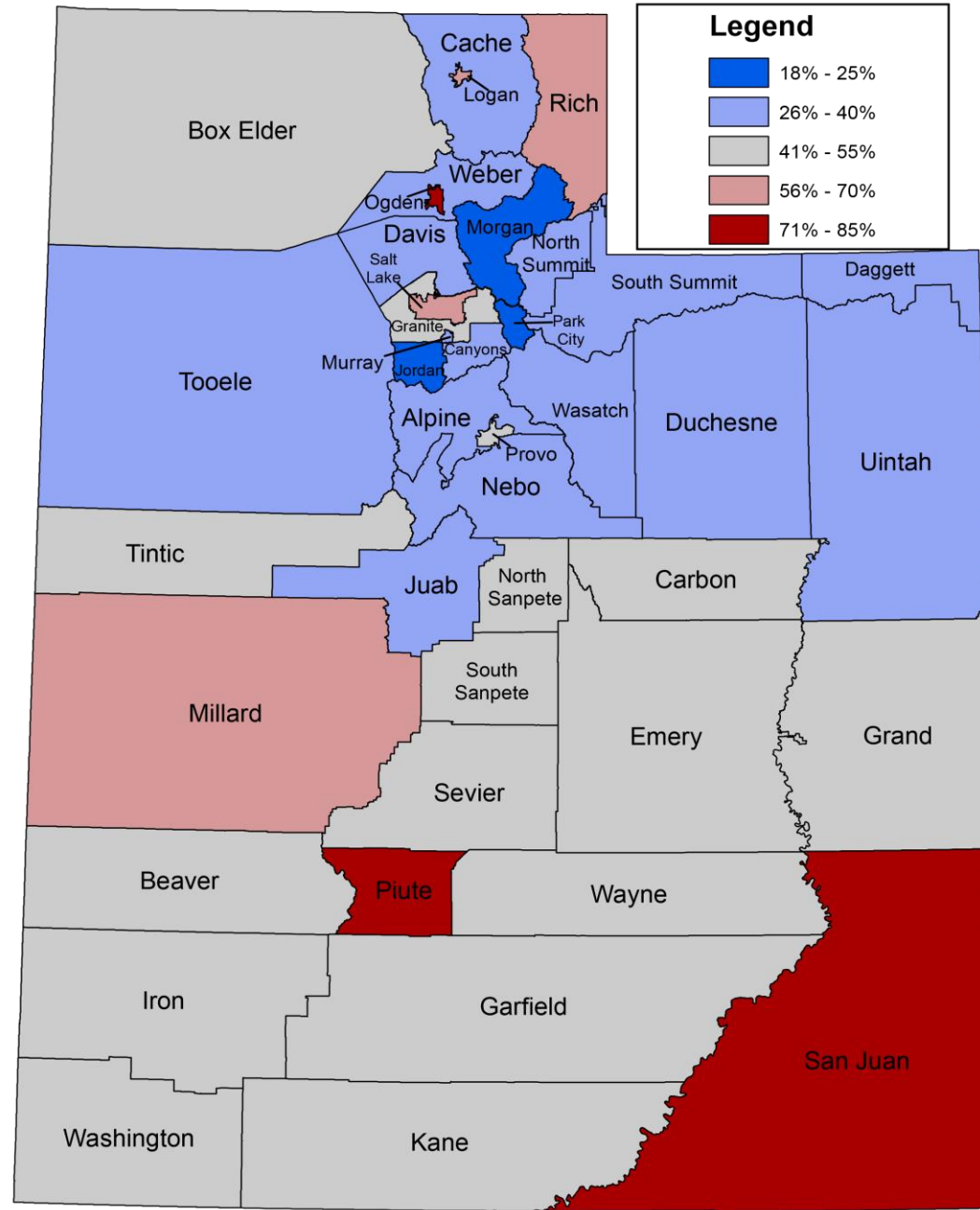


# Percent of Students Who are Ethnic Minorities October 2012



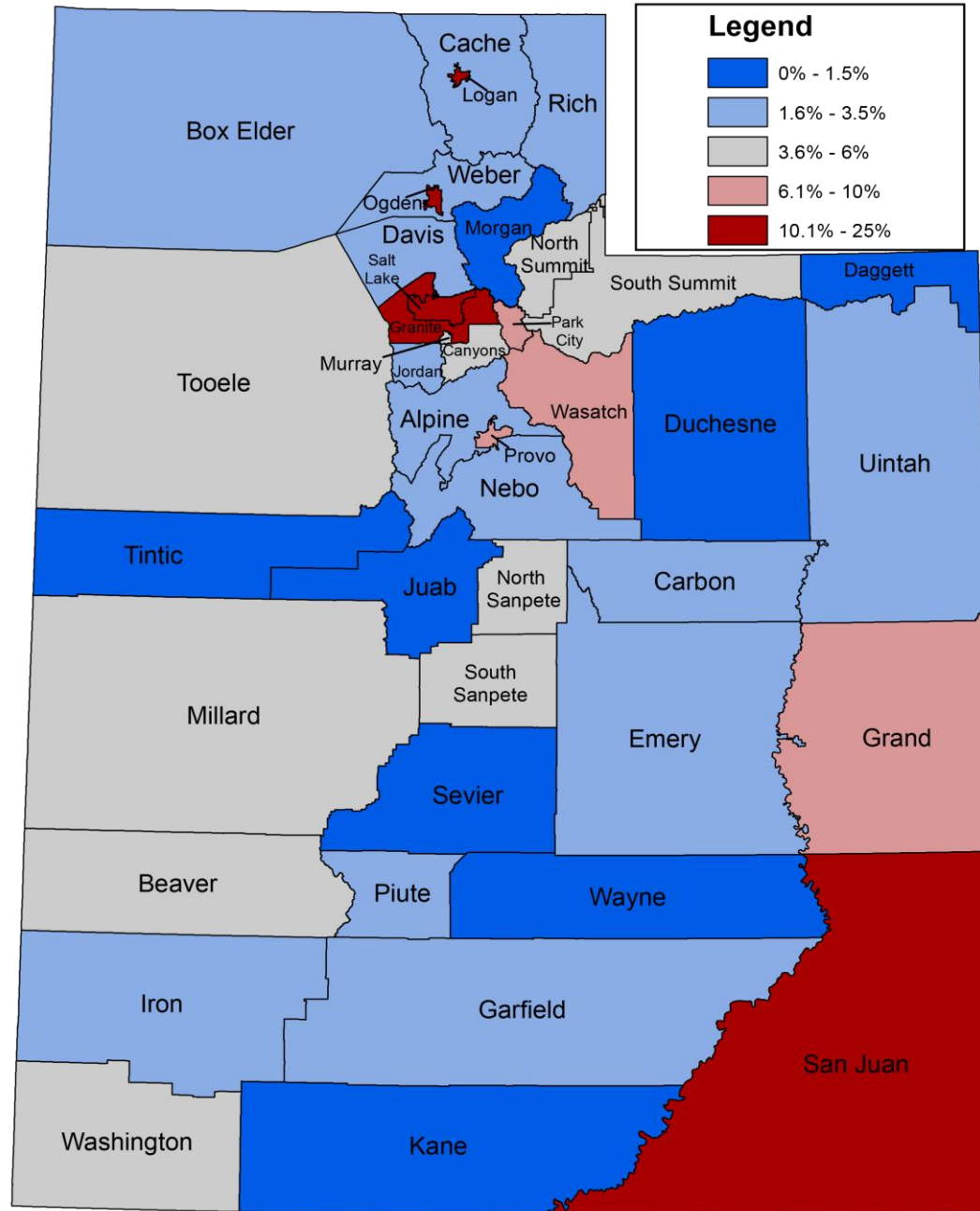
Data Source: Utah State Office of Education

# Percent of Students Receiving Free or Reduced-Price Lunch October 2012



Data Source: Utah State Office of Education

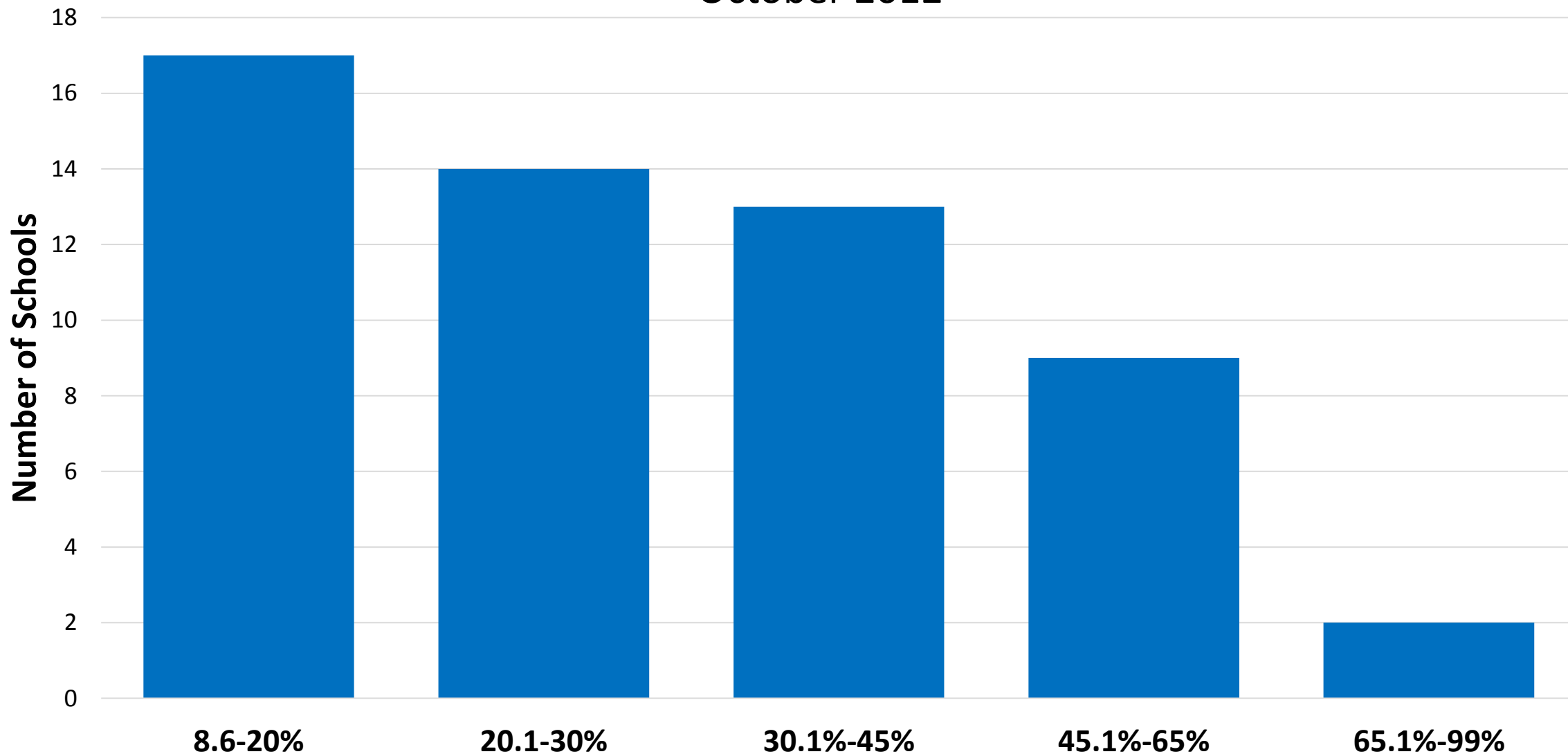
# Percent of Students Who are English Language Learners October 2012



Data Source: Utah State Office of Education

# Charter Schools by Percent of Students Receiving Free or Reduced-Price Lunch

October 2012

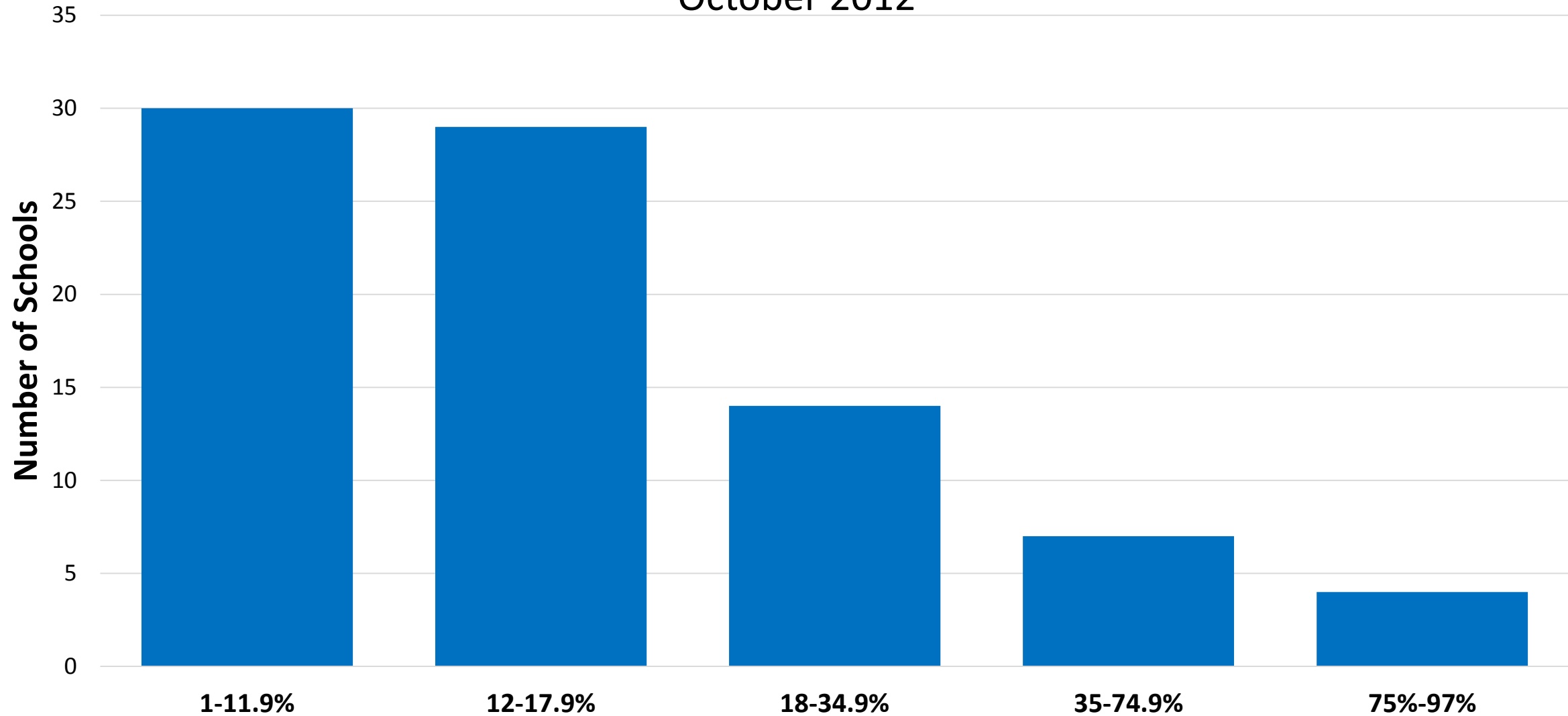


Data Source: Utah State Office of Education

# Charter Schools by Percent of Students

## Who are Minorities

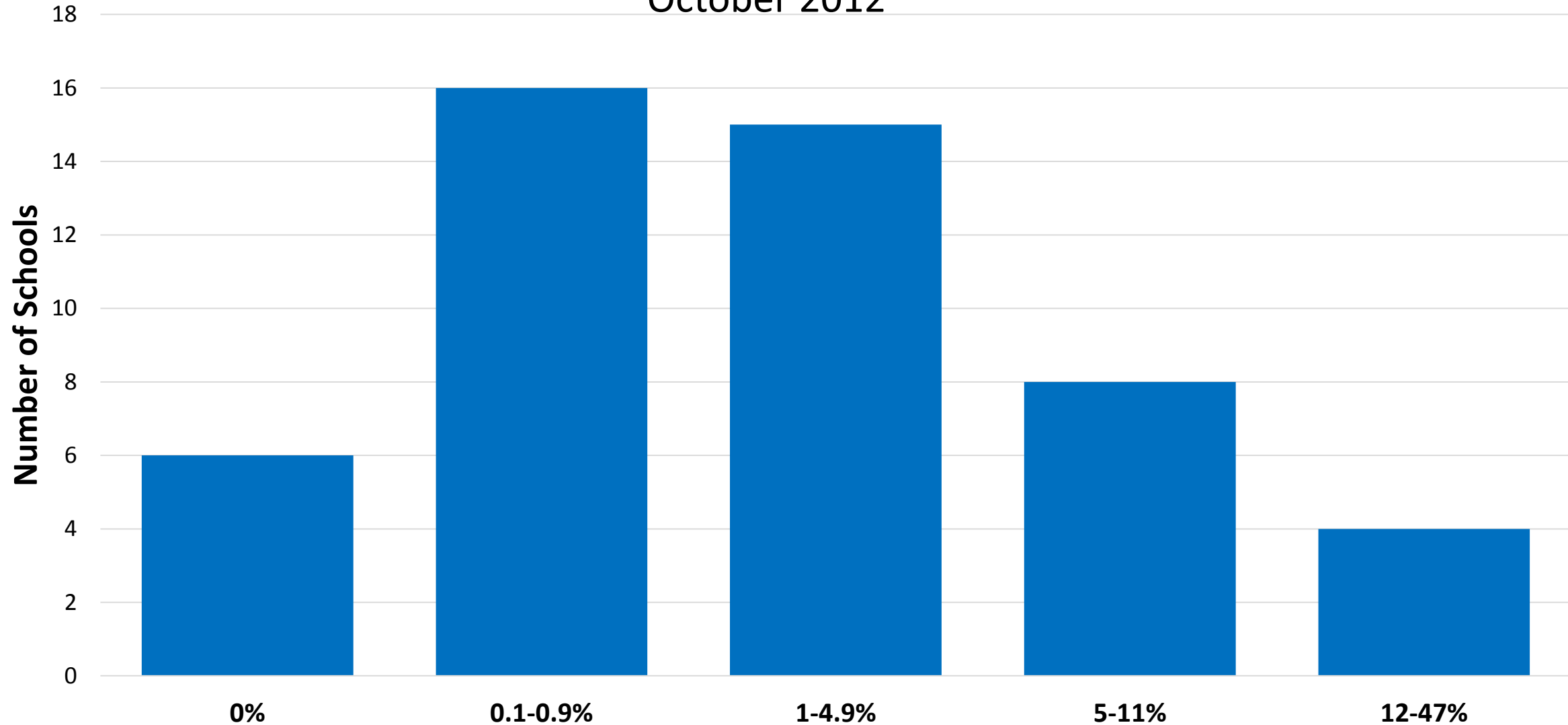
October 2012





# Charter Schools by Percent of Students Who are English Language Learners (ELL)

October 2012



Data Source: Utah State Office of Education