

**Local Mental Health Authority  
Medicaid Match Social Services  
Appropriations Sub-Committee Interim  
Legislative Report  
September 2014**

**Prepared By:**

**Division of Substance Abuse and Mental Health**

Doug Thomas – Director

**Utah Association of Counties, Utah Behavioral Health Committee**

Kyle Snow- Chair

utah department of  
**human** services

## DSAMH Scope of Responsibility

- Ensure prevention and treatment services for substance abuse and mental health are available throughout the state
- Contract with county governments to provide prevention and treatment services
- Establish formulas for allocating funds based on need
- Provide oversight and policy direction to local authorities
- Monitor and evaluate behavioral health services through annual site reviews, development of area plans, and review of program outcome data
- Provide technical assistance and training to local authorities
- Evaluate the effectiveness of prevention and treatment programs
- Communicate results to stakeholders

## County Local Mental Health Authority (LMHA) Scope of Responsibility

- Responsibilities; “within legislative appropriations and county matching funds, under the direction of the Division,” each local mental health authority shall:
  - Provide mental health services to persons within the county
  - Review and evaluate mental health needs and services, including mental health needs and services for persons incarcerated in a county jail or other county correctional facility
  - Annually prepare and submit to the division a plan approved by the county legislative body for mental health funding and service delivery (17-43-301)(4)(a)
  - Provide funding equal to at least 20% of the state funds that it receives to fund services described in the plan

## Legislative Intent Language asked for Important Information

- *1) FY 2009 through FY 2013 General Fund amounts passed through from DSAMH to each individual local mental health center;*
- *2) FY 2009 through FY 2013 Medicaid caseloads for each individual local mental health center and actual expenditures associated with Medicaid caseloads served during those years as well as actual Medicaid match paid in association with the expenditures;*
- *3) FY 2014 and FY 2015 estimated Medicaid match amounts for each local mental health center;*

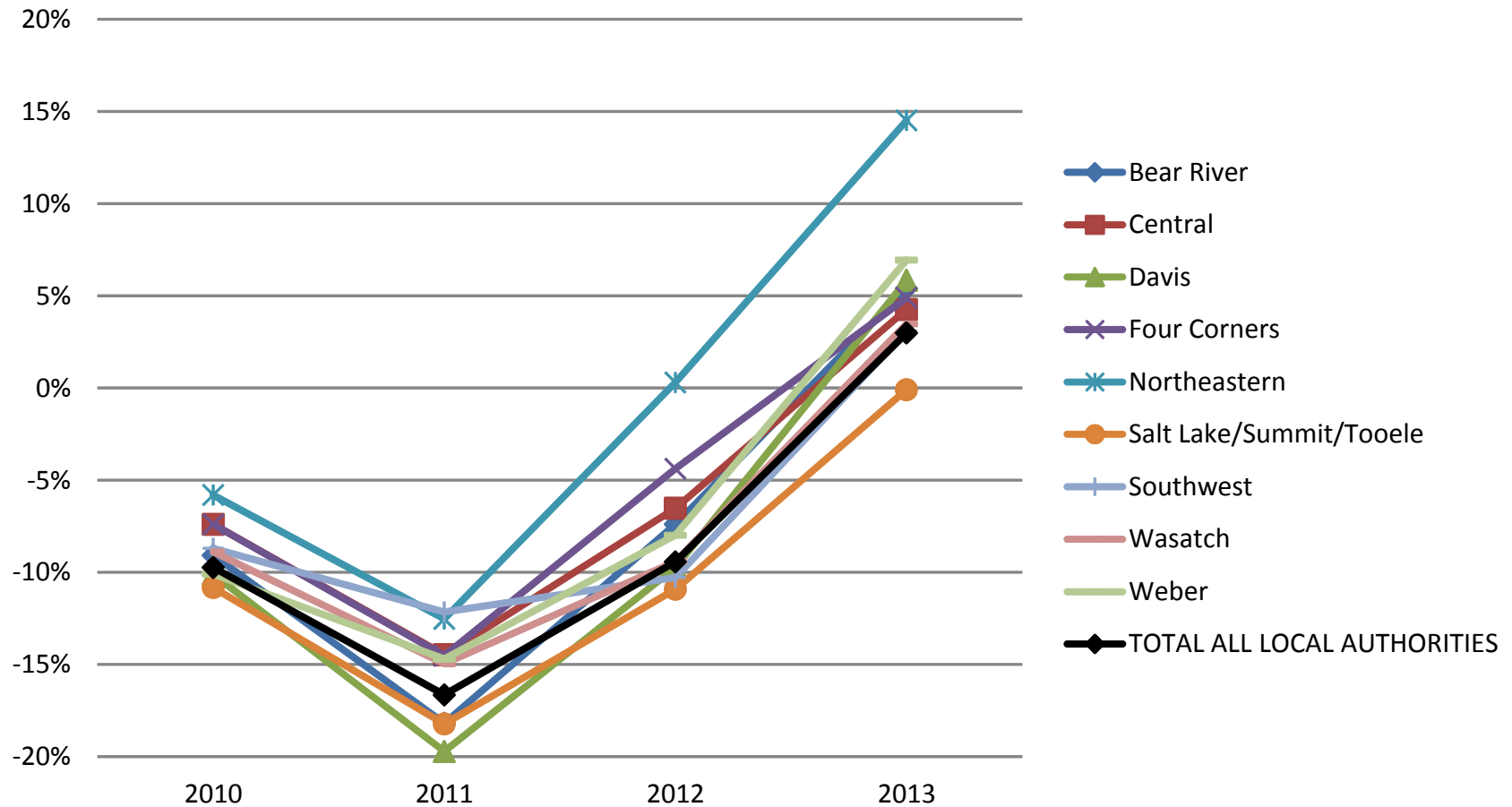
## Intent Language Important Information (continued)

- *4) an assessment regarding uniformity, or lack of uniformity, of Medicaid match need across all local mental health centers;*
- *5) a review of options for improvement and recommendations to address any existing need without providing funds unnecessarily; and*
- *6) any other relevant data in understanding where and to what extent there exists Medicaid match issues."*

# General Fund amounts passed through from DSAMH to each Local Mental Health Authority

<b>DSAMH State General Fund Payments to LMHA</b>						
<b>2009-2013</b>						
	<b>2009</b>	<b>2010</b>	<b>2011</b>	<b>2012</b>	<b>2013</b>	
<b>Bear River</b>	\$ 1,660,433	\$ 1,509,681	\$ 1,358,467	\$ 1,537,734	\$ 1,750,063	
<b>Central</b>	\$ 1,054,930	\$ 976,885	\$ 902,327	\$ 986,112	\$ 1,099,862	
<b>Davis</b>	\$ 2,913,593	\$ 2,619,132	\$ 2,339,142	\$ 2,629,923	\$ 3,083,678	
<b>Four Corners</b>	\$ 582,559	\$ 539,498	\$ 497,959	\$ 557,061	\$ 611,065	
<b>Northeastern</b>	\$ 632,926	\$ 596,204	\$ 553,635	\$ 634,809	\$ 724,809	
<b>Salt Lake/Summit/Tooele</b>	\$ 10,976,626	\$ 9,788,871	\$ 8,976,858	\$ 9,778,677	\$ 10,966,488	
<b>Southwest</b>	\$ 2,191,691	\$ 2,001,099	\$ 1,925,531	\$ 1,966,503	\$ 2,259,645	
<b>Wasatch</b>	\$ 4,893,013	\$ 4,458,146	\$ 4,160,984	\$ 4,432,690	\$ 5,062,994	
<b>Weber</b>	\$ 2,304,644	\$ 2,072,113	\$ 1,965,775	\$ 2,120,527	\$ 2,464,525	
<b>TOTAL ALL LOCAL AUTHORITIES</b>	\$ 27,210,415	\$ 24,561,629	\$ 22,680,678	\$ 24,644,036	\$ 28,023,129	

# DSAMH State General Fund Payments to LMHA Percent Decrease/Increase 2010-2013 from 2009



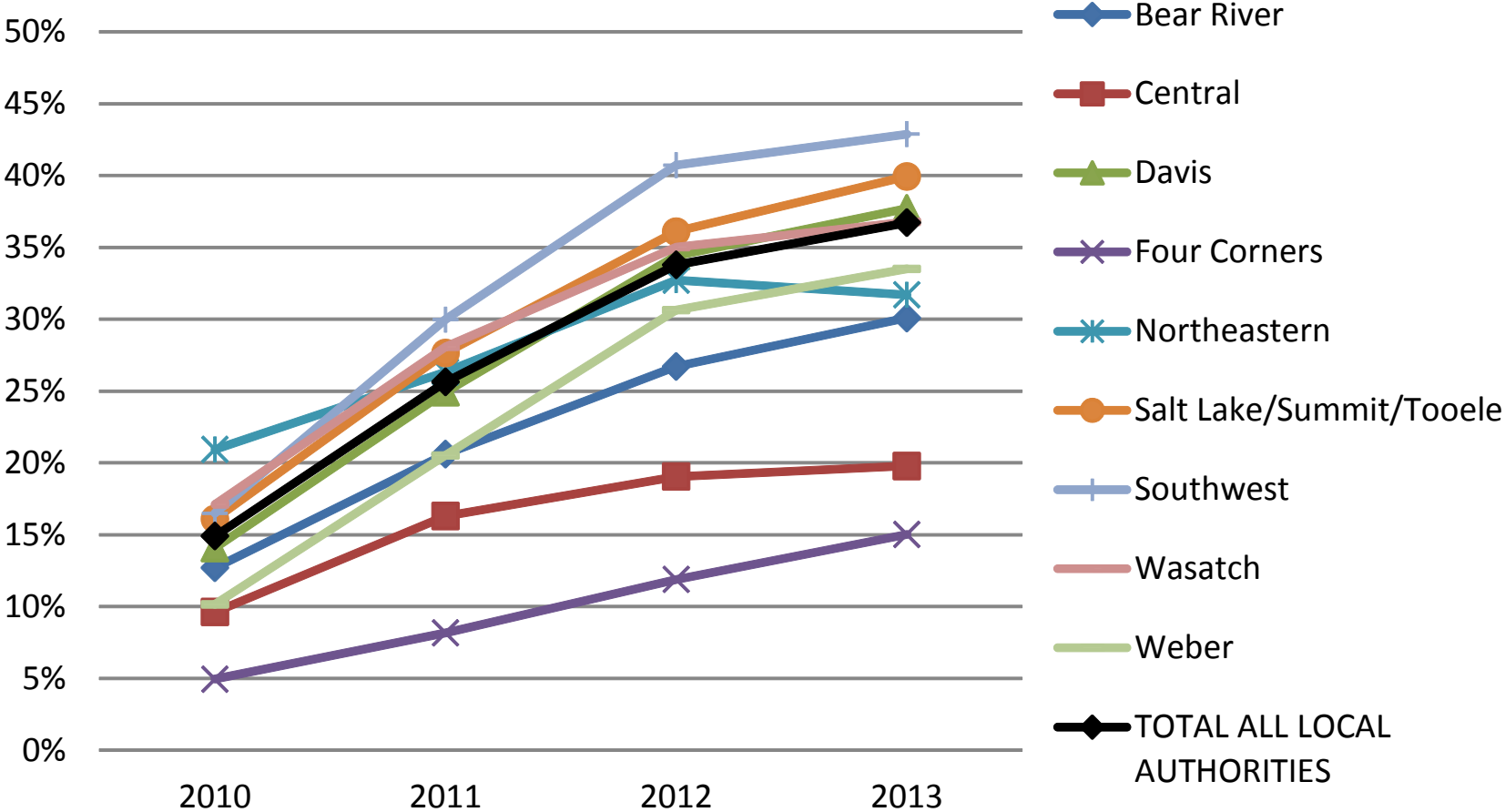
# LMHA Member Months

## 2009-2013

	2009	2010	2011	2012	2013
<b>Bear River</b>	135,876	153,133	163,879	172,161	176,745
<b>Central</b>	82,122	90,028	95,507	97,768	98,365
<b>Davis</b>	182,206	207,845	227,606	244,883	250,923
<b>Four Corners</b>	52,679	55,285	56,982	58,943	60,591
<b>Northeastern</b>	43,836	53,014	55,372	58,178	57,733
<b>Salt Lake/Summit/Tooele</b>	927,195	1,076,442	1,183,507	1,261,815	1,297,457
<b>Southwest</b>	198,938	231,746	258,558	279,938	284,248
<b>Wasatch</b>	380,503	445,593	487,328	513,716	520,399
<b>Weber</b>	231,292	254,764	278,742	302,133	308,767
<b>TOTAL ALL LOCAL AUTHORITIES</b>	<b>2,234,647</b>	<b>2,567,850</b>	<b>2,807,481</b>	<b>2,989,535</b>	<b>3,055,228</b>



# LHMA Member Months Percent Decrease/Increase 2010-2013 from 2009



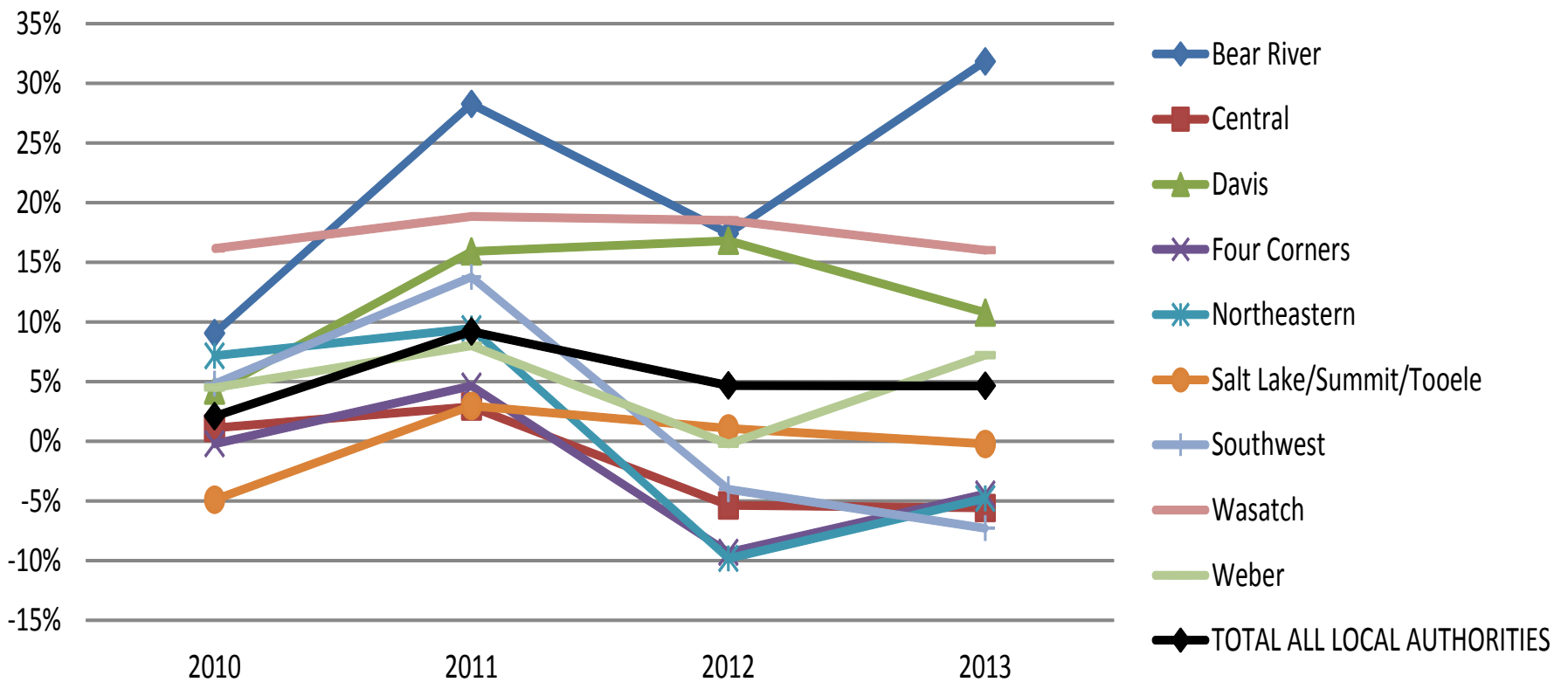
## DOH Expenditures per LMHA Medicald Mental Health Premiums

**2009-2013**

	2009	2010	2011	2012	2013
Bear River	\$ 5,388,583	\$ 5,877,254	\$ 6,912,192	\$ 6,327,503	\$ 7,103,931
Central	\$ 4,127,077	\$ 4,173,140	\$ 4,247,739	\$ 3,905,455	\$ 3,896,529
Davis	\$ 8,852,581	\$ 9,229,593	\$ 10,261,437	\$ 10,340,331	\$ 9,808,196
Four Corners	\$ 3,458,531	\$ 3,451,485	\$ 3,618,986	\$ 3,137,266	\$ 3,306,189
Northeastern	\$ 2,789,232	\$ 2,989,223	\$ 3,053,008	\$ 2,515,653	\$ 2,655,898
Salt Lake/Summit/Tooele	\$ 50,006,301	\$ 47,561,615	\$ 51,493,336	\$ 50,550,083	\$ 49,897,093
Southwest	\$ 7,020,277	\$ 7,360,040	\$ 7,987,810	\$ 6,739,079	\$ 6,510,778
Wasatch	\$ 17,702,760	\$ 20,563,986	\$ 21,039,370	\$ 20,983,425	\$ 20,538,966
Weber	\$ 10,037,224	\$ 10,490,367	\$ 10,841,018	\$ 10,017,699	\$ 10,762,836
<b>TOTAL ALL LOCAL AUTHORITIES</b>	<b>\$ 109,382,566</b>	<b>\$ 111,696,703</b>	<b>\$ 119,454,896</b>	<b>\$ 114,516,494</b>	<b>\$ 114,480,416</b>

\*Premiums are summarized based on paid date rather than service date.

# DOH Expenditures per LMHA Medicaid Mental Health Premiums\* Percent Decrease/Increase 2010-2013 from 2009

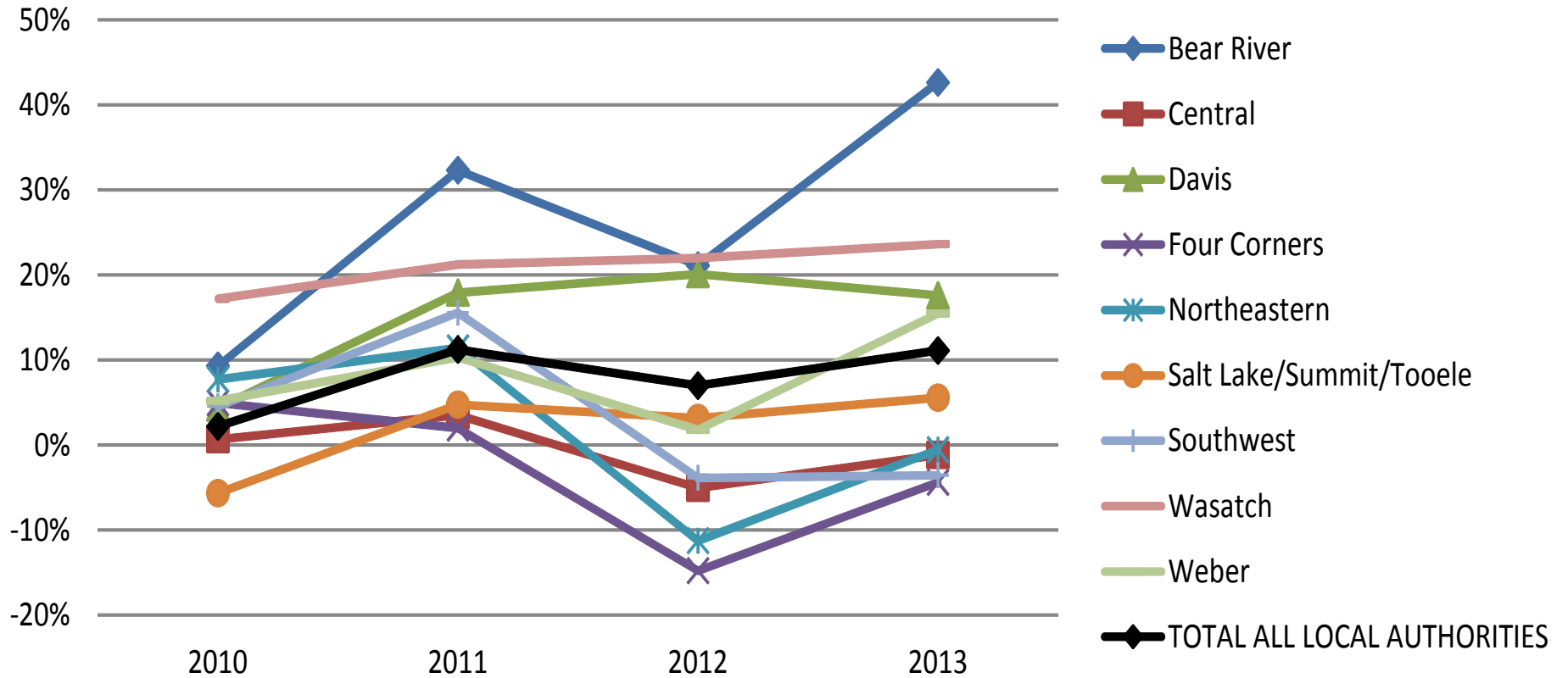


## State and County Medicaid Match Paid by LMHA to DOH

**2009-2013**

	2009	2010	2011	2012	2013
Bear River	\$ 1,372,687	\$ 1,500,602	\$ 1,816,382	\$ 1,662,425	\$ 1,957,918
Central	\$ 1,022,406	\$ 1,029,533	\$ 1,058,267	\$ 970,999	\$ 1,010,606
Davis	\$ 2,319,483	\$ 2,421,370	\$ 2,735,412	\$ 2,785,872	\$ 2,727,879
Four Corners	\$ 686,745	\$ 720,712	\$ 700,459	\$ 585,276	\$ 656,637
Northeastern	\$ 649,742	\$ 699,888	\$ 723,986	\$ 576,659	\$ 646,179
Salt Lake/Summit/Tooele	\$ 12,609,649	\$ 11,897,042	\$ 13,208,959	\$ 13,011,686	\$ 13,313,049
Southwest	\$ 1,751,494	\$ 1,831,173	\$ 2,024,041	\$ 1,684,146	\$ 1,689,354
Wasatch	\$ 4,570,670	\$ 5,355,884	\$ 5,542,114	\$ 5,576,863	\$ 5,650,760
Weber	\$ 2,438,457	\$ 2,565,104	\$ 2,690,419	\$ 2,482,131	\$ 2,815,255
<b>TOTAL ALL LOCAL AUTHORITIES</b>	<b>\$27,421,333</b>	<b>\$28,021,308</b>	<b>\$30,500,039</b>	<b>\$29,336,057</b>	<b>\$30,467,637</b>

# State and County Medicaid Match Paid by LMHA to DOH Percent Decrease/Increase 2010-2013 from 2009



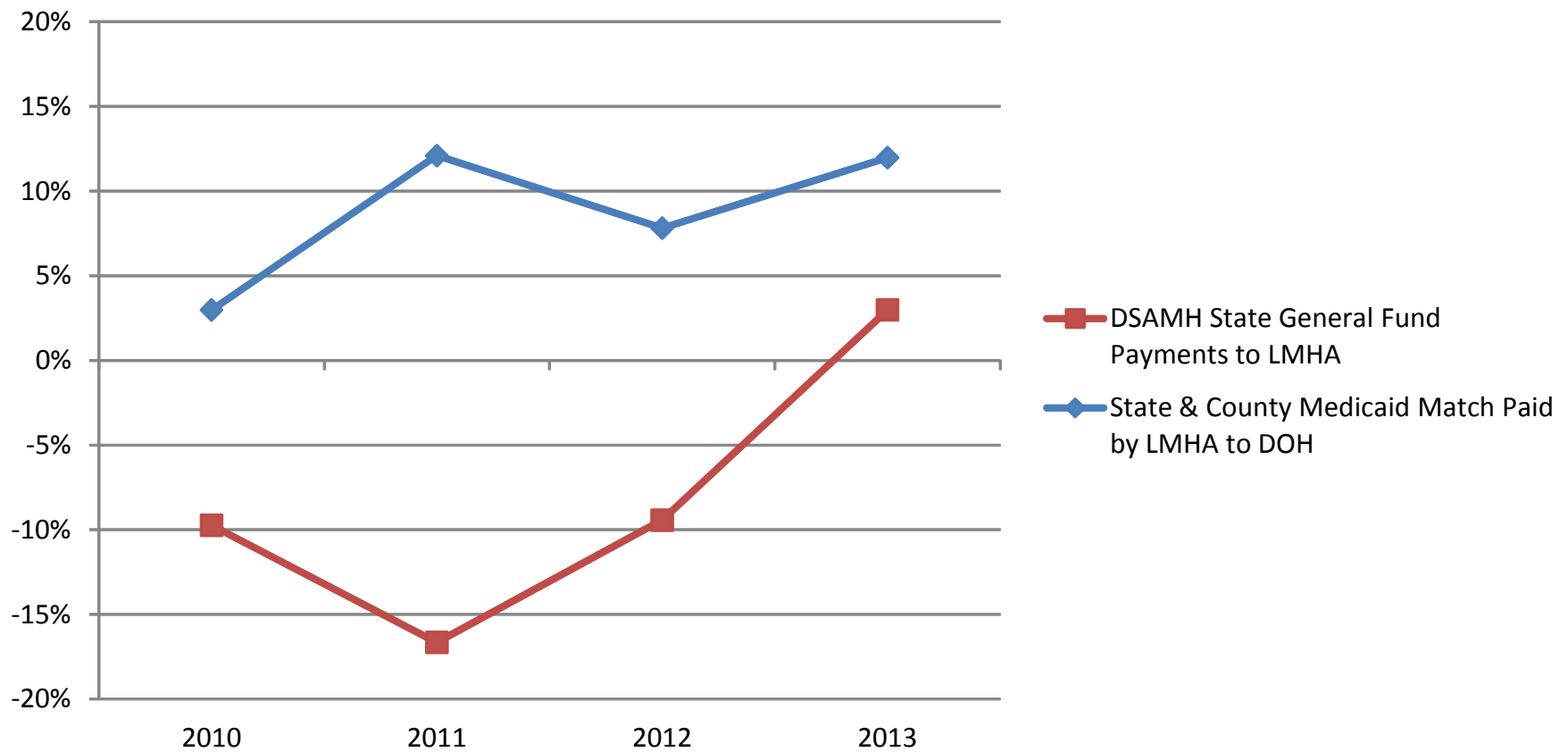
## DSAMH State General Fund Payments to LMHA

	2009	2010	2011	2012	2013
<b>Bear River</b>	\$ 1,660,433	\$ 1,509,681	\$ 1,358,467	\$ 1,537,734	\$ 1,750,063
<b>Central</b>	\$ 1,054,930	\$ 976,885	\$ 902,327	\$ 986,112	\$ 1,099,862
<b>Davis</b>	\$ 2,913,593	\$ 2,619,132	\$ 2,339,142	\$ 2,629,923	\$ 3,083,678
<b>Four Corners</b>	\$ 582,559	\$ 539,498	\$ 497,959	\$ 557,061	\$ 611,065
<b>Northeastern</b>	\$ 632,926	\$ 596,204	\$ 553,635	\$ 634,809	\$ 724,809
<b>Salt Lake/Summit/Tooele</b>	\$ 10,976,626	\$ 9,788,871	\$ 8,976,858	\$ 9,778,677	\$ 10,966,488
<b>Southwest</b>	\$ 2,191,691	\$ 2,001,099	\$ 1,925,531	\$ 1,966,503	\$ 2,259,645
<b>Wasatch</b>	\$ 4,893,013	\$ 4,458,146	\$ 4,160,984	\$ 4,432,690	\$ 5,062,994
<b>Weber</b>	\$ 2,304,644	\$ 2,072,113	\$ 1,965,775	\$ 2,120,527	\$ 2,464,525
<b>TOTAL ALL LOCAL AUTHORITIES</b>	\$ 27,210,415	\$ 24,561,629	\$ 22,680,678	\$ 24,644,036	\$ 28,023,129

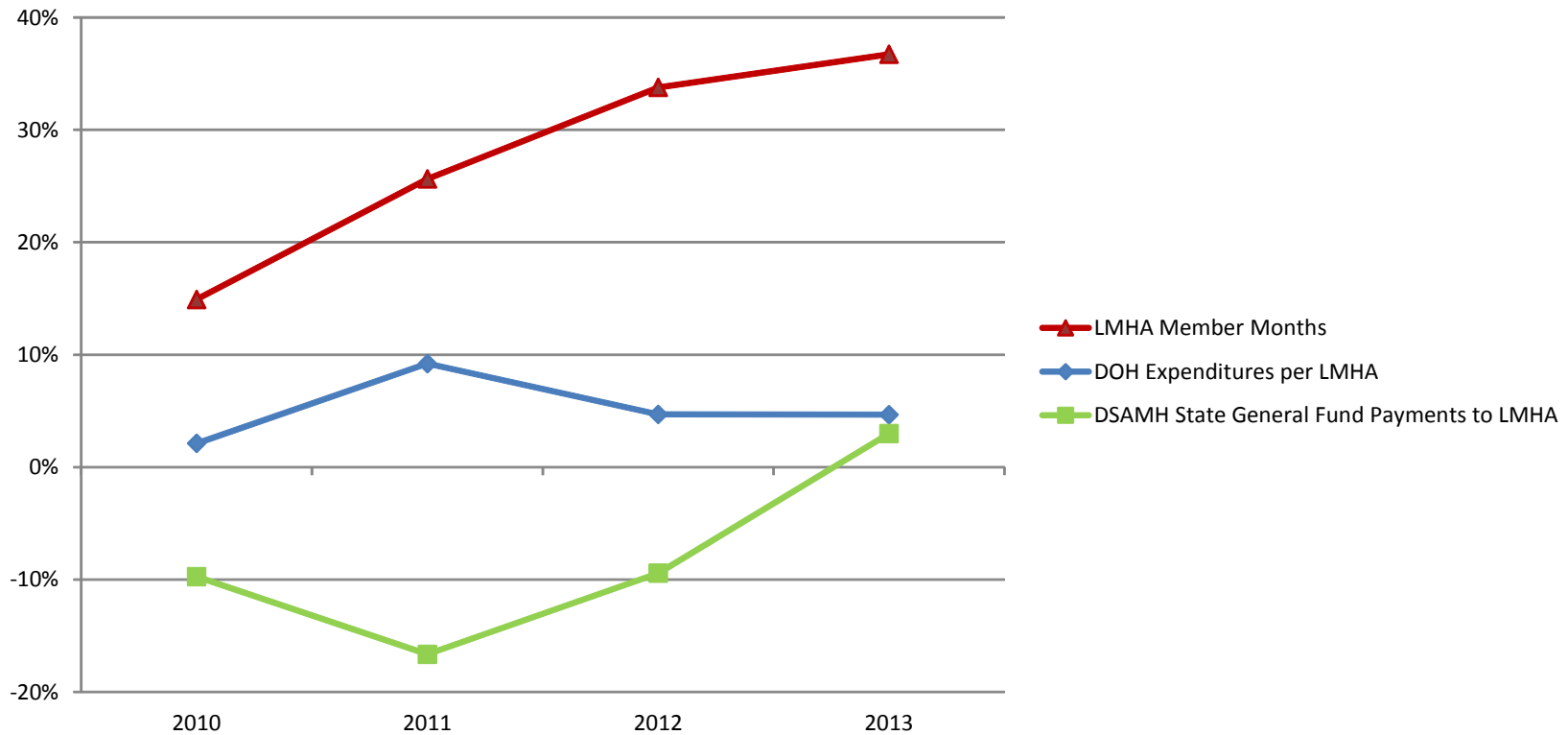
## State and County Medicaid Match Paid by LMHA to DOH

	2009	2010	2011	2012	2013
<b>Bear River</b>	\$ 1,372,687	\$ 1,500,602	\$ 1,816,382	\$ 1,662,425	\$ 1,957,918
<b>Central</b>	\$ 1,022,406	\$ 1,029,533	\$ 1,058,267	\$ 970,999	\$ 1,010,606
<b>Davis</b>	\$ 2,319,483	\$ 2,421,370	\$ 2,735,412	\$ 2,785,872	\$ 2,727,879
<b>Four Corners</b>	\$ 686,745	\$ 720,712	\$ 700,459	\$ 585,276	\$ 656,637
<b>Northeastern</b>	\$ 649,742	\$ 699,888	\$ 723,986	\$ 576,659	\$ 646,179
<b>Salt Lake/Summit/Tooele</b>	\$ 12,609,649	\$ 11,897,042	\$ 13,208,959	\$ 13,011,686	\$ 13,313,049
<b>Southwest</b>	\$ 1,751,494	\$ 1,831,173	\$ 2,024,041	\$ 1,684,146	\$ 1,689,354
<b>Wasatch</b>	\$ 4,570,670	\$ 5,355,884	\$ 5,542,114	\$ 5,576,863	\$ 5,650,760
<b>Weber</b>	\$ 2,438,457	\$ 2,565,104	\$ 2,690,419	\$ 2,482,131	\$ 2,815,255
<b>TOTAL ALL LOCAL AUTHORITIES</b>	\$27,421,333	\$28,021,308	\$30,500,039	\$29,336,057	\$30,467,637

# State and County Medicaid Match Compared to DSAMH State General Fund Payments to LMHA Percent Decrease/Increase 2010-2103 from 2009



### Comparison of LMHA Member Months, DOH Expenditures per LMHA, and DSAMH State General Fund Payments to LMHA Percent Increase/Decrease 2010-2013 from 2009





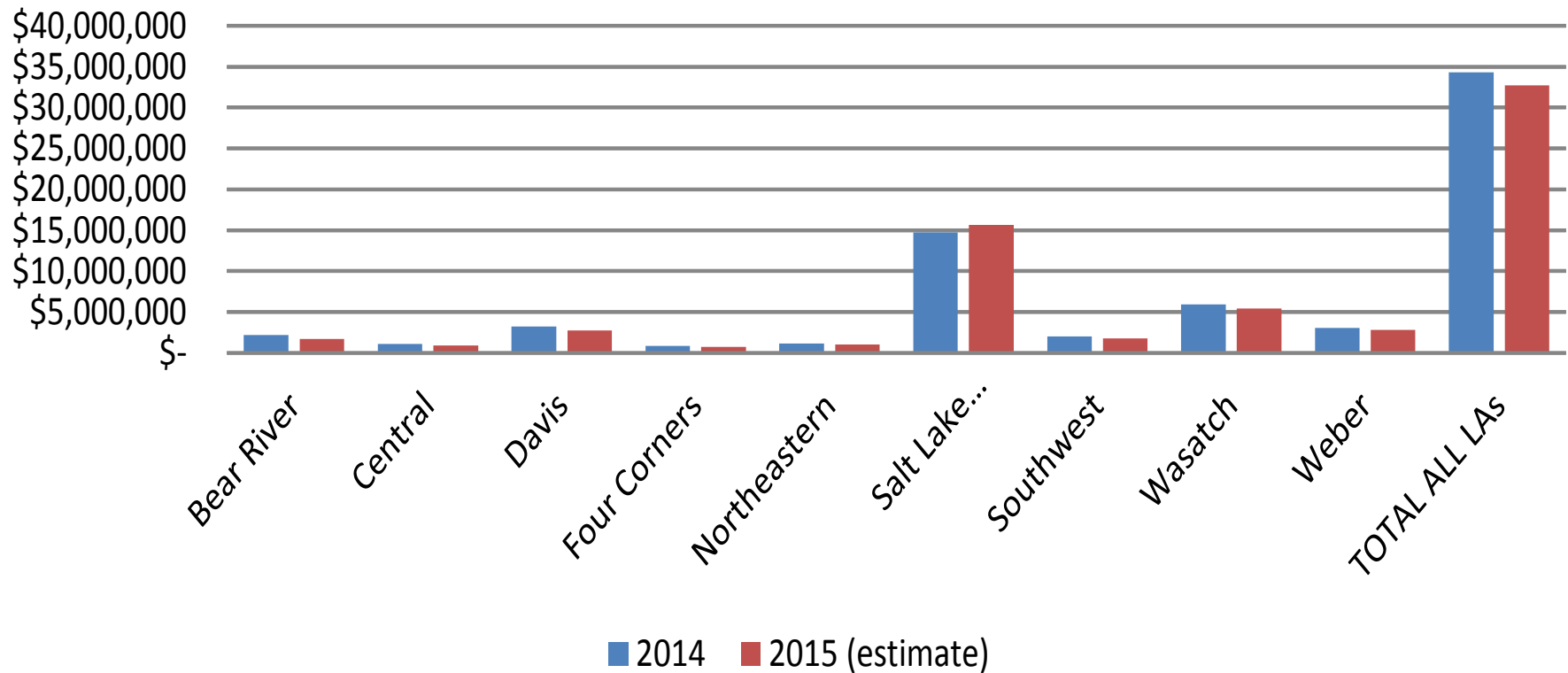
## Division of Substance Abuse and Mental Health

### State General Fund and County General Fund Used For Mental Health Services

	FY 2009	FY 2010	FY 2011	FY 2012	FY 2013
State G.F. Medicaid	21,705,171	19,401,369	19,387,624	21,898,153	23,548,660
State G.F. Non-Medicaid	3,391,876	3,036,327	1,134,086	624,249	2,460,523
<b>Total State G.F.</b>	<b>25,097,047</b>	<b>22,437,696</b>	<b>20,521,710</b>	<b>22,522,402</b>	<b>26,009,183</b>
County G.F. Medicaid	-	1,150,383	4,849,323	7,493,508	8,734,242
County G.F. Non-Medicaid	-	6,741,359	6,501,256	2,652,868	4,635,246
<b>Total County G.F.</b>	<b>10,354,433</b>	<b>7,891,742</b>	<b>11,350,579</b>	<b>10,146,376</b>	<b>13,369,488</b>
County Match Percentage (20% required)	41%	35%	55%	45%	59%
County Paid Percentage of Total Medicaid Match		6%	20%	25%	27%

Please note that the County G.F. Medicaid amount and County G.F. Non-Medicaid amount for FY2009 were not available.

# State and County Medicaid Match Paid by LMHA to DOH 2014 and 2015 (estimate)



## State and County Medicaid Match Paid by LMHA to DOH

	2014	2015 (estimate)
<b>Bear River</b>	\$ 2,200,412	\$ 1,705,640
<b>Central</b>	\$ 1,086,999	\$ 883,951
<b>Davis</b>	\$ 3,235,598	\$ 2,769,775
<b>Four Corners</b>	\$ 861,460	\$ 714,439
<b>Northeastern</b>	\$ 1,169,253	\$ 1,027,875
<b>Salt Lake /Summit /Tooele</b>	\$ 14,758,916	\$ 15,637,255
<b>Southwest</b>	\$ 2,014,656	\$ 1,765,739
<b>Wasatch</b>	\$ 5,931,078	\$ 5,433,225
<b>Weber</b>	\$ 3,060,105	\$ 2,781,160
<b>TOTAL ALL LOCAL AUTHORITIES</b>	\$ 34,318,477	\$ 32,719,059

## Uniformity Factors

- Actuarial Rate Setting Process Approved by Centers for Medicare and Medicaid Services (CMS) based on the Checklist (for Managed Care Rate Setting)
- Mandated Services in State Code
- DOH Contracts and Oversight
- DSAMH Contracts, Oversight and Division Directives
- Area Plan "Process"
- Uniform Preferred Practice Guidelines and Service Manuals
- LMHAs are Licensed by the DHS Office of Licensing

## Lack of Uniformity Factors

- Local Control, Structure and Priorities
- County Demographics
- County Tax Base
- Rate Setting Process is done individually with each LMHA
- Variability among Medicaid Rate Cells
- County Match of State General Fund above the twenty percent (20%) Required Minimum
- Area Plan "Actual" and Array of Services
- Medicaid Demographics by Eligibility Category Vary Independent of LMHA/County Population Demographics

## Options for Improvement & Recommendations to Address any Existing Need Without Providing Funds Unnecessarily

- Fund the \$6,400,000 Medicaid Match Ongoing
- Alternative formula for the \$6,400,000 Medicaid Match allocation based on available Medicaid data
- Medicaid Match dollars allocated to DSAMH be put with the DOH Medicaid Consensus monies for automatic future increases/decreases based on Medicaid enrollment and other relevant factors.

## Options for Improvement & Recommendations Continued

- LMHAs recommend the \$6,400,000 allocation move from DSAMH to DOH while DSAMH recommends it remain with DSAMH
- The Governor's Healthcare Reform Plan, "Healthy Utah" would have a significant impact on behavioral healthcare in Utah. Healthy Utah provides an opportunity to intervene with individuals before they become involved with either the Criminal Justice system or the Child Welfare/Juvenile Justice system through integrated care models partnerships with primary care providers, commercial insurance plans, schools and other community partners.

## Utah Division of Substance Abuse and Mental Health Medicaid Match - Allocation

Based on Current Formula			
Center	FY2015 Allocation State G.F.	Percent	Allocate \$6,400,000
<b>Bear River</b>	\$ 1,735,972	5.98%	\$ 382,830
<b>Four Corners</b>	\$ 578,691	1.99%	\$ 127,617
<b>Central</b>	\$ 1,080,866	3.72%	\$ 238,361
<b>Davis County</b>	\$ 3,079,741	10.61%	\$ 679,168
<b>Salt Lake County</b>	\$ 10,374,492	35.75%	\$ 2,287,863
<b>San Juan County</b>	\$ 200,417	0.69%	\$ 44,197
<b>Southwest</b>	\$ 2,263,826	7.80%	\$ 499,236
<b>Tooele/Summit County</b>	\$ 998,169	3.44%	\$ 220,124
<b>Northeastern</b>	\$ 691,651	2.38%	\$ 152,528
<b>Utah County</b>	\$ 5,270,949	18.16%	\$ 1,162,390
<b>Wasatch County</b>	\$ 300,940	1.04%	\$ 66,366
<b>Weber Human Svcs</b>	\$ 2,445,586	8.43%	\$ 539,319
<b>TOTAL</b>	<b>\$ 29,021,300</b>	<b>100.00%</b>	<b>\$ 6,400,000</b>

Proposed Formula			
FY2013 Rates x Elig	Percent	Allocate \$ 6,289,437	Difference
6,645,901	6.79%	\$ 427,177	\$ 44,347
2,785,644	2.85%	\$ 179,052	\$ 51,435
3,517,836	3.60%	\$ 226,115	\$ (12,246)
8,851,812	9.05%	\$ 568,966	\$ (110,202)
36,769,586	37.58%	\$ 2,363,429	\$ 75,567
5,682,932	5.81%	\$ 365,280	\$ (133,956)
3,662,115	3.74%	\$ 235,389	\$ 15,265
2,445,606	2.50%	\$ 157,196	\$ 4,667
18,230,822	18.63%	\$ 1,171,818	\$ 9,428
9,257,085	9.46%	\$ 595,015	\$ 55,696
<b>97,849,339</b>	<b>100.00%</b>	<b>\$ 6,289,437</b>	<b>\$ 0</b>

Note: San Juan County and Wasatch County were paid fee for service in FY2013.

TOTAL	6,400,000
San Juan County	(44,197)
Wasatch County	(66,366)
ADJUSTED TOTAL	<u>6,289,437</u>

## Any Other Relevant Data in Understanding Where and To What Extent There Exists Medicaid Match Issues

- Over the past 20 years as Medicaid Eligible's have increased there has been no established funding mechanism in place to keep pace with the increased need for funding with regard to Medicaid behavioral health services.
- Medicaid Match need has increased at a faster rate than allocated State and County dollars. LMHAs have had to shift funds they previously used for Safety Net Services for the uninsured or underinsured to pay Medicaid Match.
- For example, in 1996, one LMHA, Bear River Mental Health (BRMH), spent forty four percent (44%) of their eligible State General Fund dollars toward Medicaid Match. In contrast, in 2013 BRMH spent one hundred percent (100%) of their eligible State General Fund dollars toward Medicaid Match leaving only \$179,769 dollars allocated specifically for the uninsured/underinsured for Safety Net Services for Box Elder, Cache and Rich County residents.