



Photo by © John Mayer

## Schedule

The PRC is advancing with the siting process according to the following schedule:

<b>December 2014</b>	Assess conditions affecting correctional facility development at the prospective sites. Hold a PRC meeting (December 22) and present results of assessment.
<b>January 2015</b>	Undertake detailed evaluations of all sites remaining following assessment stage.
<b>February 2015</b>	Results of initial evaluations of prospective sites reported to the PRC.

## Interested in Learning More?

For information about the PRC visit: [www.le.utah.gov/prc](http://www.le.utah.gov/prc).  
To provide feedback, contact: [prisonrelocation@le.utah.gov](mailto:prisonrelocation@le.utah.gov) or:

**Bryant R. Howe, Deputy Director**

Office of Legislative Research and General Counsel  
Tel: 801-538-1032  
Email: [bhowe@le.utah.gov](mailto:bhowe@le.utah.gov)

**Robert J. Nardi, Senior Vice President**

Louis Berger  
Tel: 973-407-1681  
Mobile: 973-809-7495  
Email: [rnardi@louisberger.com](mailto:rnardi@louisberger.com)



# Utah Correctional Facility

**Volume 3 - PRC Moving Forward** December 12, 2014

## Prison Relocation Commission

The Utah State Legislature established the Prison Relocation Commission (PRC) in early 2014 to lead the effort to develop a new correctional facility to replace the Utah State Prison located in Draper, Utah. PRC's responsibilities include carefully and deliberately considering, studying, and evaluating how and where to move the Utah State Prison from its current location in Draper. PRC's efforts and resources are focused on ultimately providing recommendations to the Governor and Legislature. To assist with the planning for the new correctional facility, the PRC assembled a team with representatives of the Utah Department of Corrections (DOC), the Utah Division of Facilities Construction and Management (DFCM), the Commission on Criminal and Juvenile Justice and a group of consultants led by MGT of America, Inc. (the "PRC Team").

## PRC's Goal

Selecting the best site option for developing new state correctional facilities will ensure that Utah's criminal justice system in general and the Utah DOC in particular continues to function in a high quality manner while addressing the need for modern, efficient and cost effective institutions for current and future inmate populations. Development of new facilities to replace the existing Utah State Prison will allow Utah DOC to accomplish its mission, meet the needs of current and future inmate populations and provide for the continued safety and security of inmates, prison staff and the citizens of Utah.



## PRC Siting Status

The site identification and screening phase has been the focus of much of the PRC's initial efforts since July 2014 when the PRC began seeking potential sites for development of new correctional facilities. Over the course of several months, the PRC compiled an inventory of prospective sites from property owners/representatives and screened those sites to exclude those that are the least suitable for development. That screening process identified a small number of sites that will undergo further assessment.

Initially, a search radius was established within which efforts to identify and elicit prospective correctional facility sites were focused. Relying upon input from the PRC and Utah DOC, the initial site search radius took into account the following:

- Current Draper Prison workforce place of residence
- Locations of legal infrastructure currently supporting/serving Draper Prison
- Locations of medical and health care services currently supporting/serving Draper Prison
- Locations of volunteers and volunteer organizations currently supporting/serving Draper Prison
- Resident population concentrations
- Regional transportation networks and transit services

Based on the above, the initial site search radius comprised all or portions of six counties: Box Elder County, Davis County, Salt Lake County, Tooele County, Utah County and Weber County. Meetings and discussions were held with planning and economic development officials representing the six counties to explain the siting process and solicit interest and additional potential sites that could accommodate prison development. Relying upon the real estate industry and direct contacts from property owners and their representatives, 26 sites were eventually identified for PRC consideration as shown on the following page.

## Site Screening Process and Results

Each prospective site was subjected to an initial screening to determine possible suitability. The screening process consisted of evaluating each site using the following PRC-adopted criteria to screen out those sites that clearly did not merit further consideration:

### Criteria—Proximity (Points: 35 of 100)

- Proximity to Staff, Visitors and Volunteers
- Proximity to Medical and Treatment Providers
- Proximity to Legal Services

### Criteria—Land and Environment (Points: 15 of 100)

- Land Area and Topography
- Soil Characteristics
- Wetlands
- Hazard Avoidance (Flooding, Geologic Faults, Landfills, etc.)

### Criteria—Infrastructure (Points: 15 of 100)

- Access to Roadways
- Water Supply
- Wastewater Treatment
- Electric Power
- Natural Gas
- Telecommunications

## Public Outreach

In January 2015 the PRC will reach out to the public, key stakeholders and elected officials in order to discuss the proposed project with the potential host communities, frame the public informational process and articulate how public input will be integrated into the planning and decision-making process. The PRC will utilize various outlets to provide opportunities to participate in the planning process. The PRC is committed to ensuring that the process of planning, siting and eventually developing new correctional facilities benefits from the input and involvement of all parties. Outreach activities will be varied in their approach in order to encourage participation across different audiences, recognizing that individuals and groups receive information in different ways.

Public information sessions are being planned as informal gatherings that will allow exchanges of information and ideas between members of the Project Team and the public. Project Team representatives will be available to answer questions regarding on-going studies and planning efforts. Public information sessions will occur at key milestones to update communities on project status and provide opportunities for the public to offer its input. Meeting formats may include evening sessions as well as mid-day events at local gathering points (city hall, public library, etc.). Meeting publicity would occur via postings on the PRC website.

The PRC will continue preparing newsletters to provide status updates and information throughout the process. The purpose of these newsletters will be to inform interested citizens and to solicit comments on ideas or decisions associated with the project. All newsletters will also be posted on the PRC website.

## Next Steps

The highly ranked sites are undergoing further assessment relying upon guidelines adopted by the PRC at its December 3, 2014 meeting. Those guidelines are:

- Have any issues been discovered to date that would make the site unreasonably difficult or costly to develop?
- Is there an identified, compelling state interest that would likely be impaired by locating the correctional facility on the site being assessed?
- Is the proposed site in the path of expected concentrations of population growth and population density that will likely occur in the foreseeable future?
- What is contemplated in the land use plan of the local community where the proposed site is located?

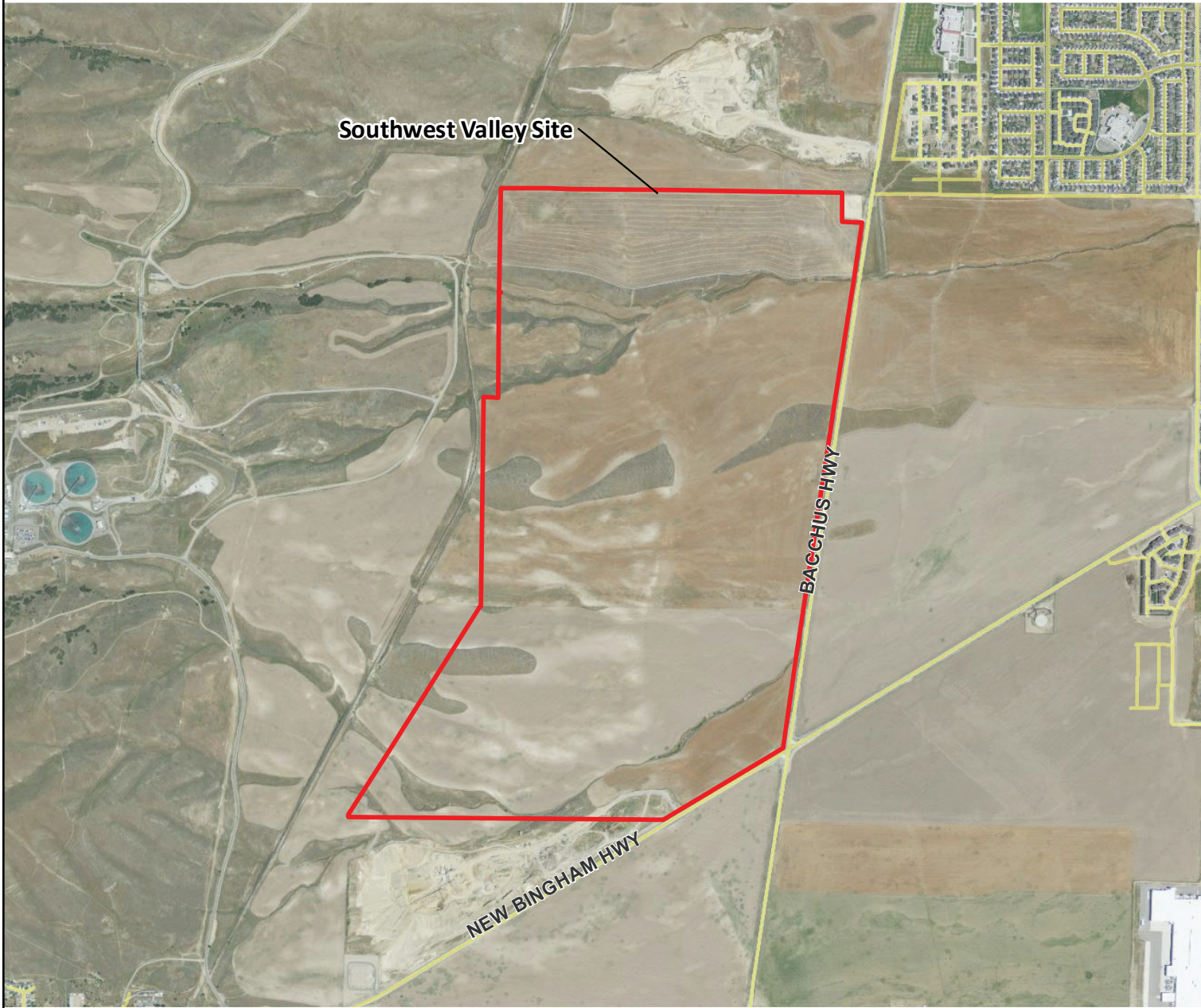
Findings will be presented to the PRC at its next meeting.

## FREQUENTLY ASKED QUESTIONS

- Q. Does the Utah State Legislature support the prison relocation?
- A. Yes, the Utah State Legislature endorsed relocation of the Utah State Prison during the 2014 legislative session.
- Q. How will this action impact criminal justice and corrections outcomes in the State of Utah?
- A. The relocation would enhance the ability of the State to respond to the needs of the inmate populations with a modernized correctional facility and ensure a high quality of service and safety for inmate populations.
- Q. What is the timeframe for development of the new correctional facilities?
- A. Groundbreaking is planned for 2016 and operation is expected to begin within approximately three years thereafter.
- Q. How will the prison's relocation affect private contractors currently serving the Utah State Prison?
- A. Utah DOC has an excellent relationship with its commercial partners and every effort will be made to minimize potential impacts to contractors. Utah DOC will keep contractors informed of milestones in the relocation process and provide as much advance notice as possible with regards to contract status.
- Q. How will elected officials, stakeholders and the public be kept informed of the PRC's efforts and progress?
- A. Information will be provided via information sessions and group meetings being scheduled with business groups, religious leaders, and administrators and the public in the potential host communities. The PRC website is also being updated regularly with new information and is accessible at any time (prisonrelocation@le.utah.gov).

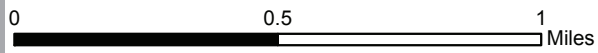


# Southwest Valley Site



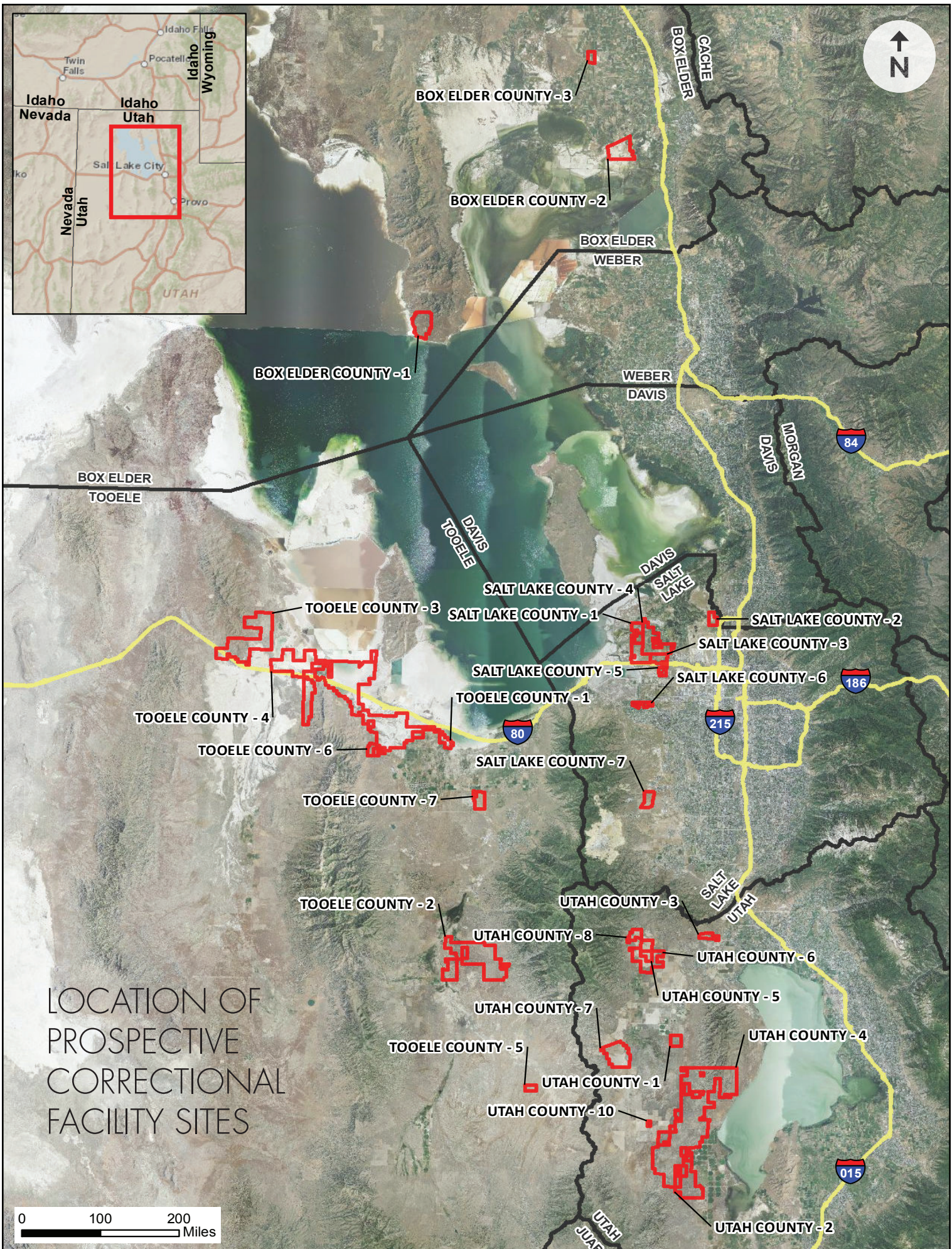
### Legend

- Southwest Valley Site - 800 acres
- County Boundary

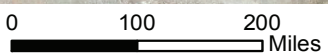


No critical flaws were identified during the screening process and the site is undergoing further assessment. The site offers particular strengths in such areas as:

- Proximity to major population centers
- Regional access (via SR 48, SR 111)
- 500+ acres available
- Relatively level topography
- Few development constraints
- Proximity to infrastructure



## LOCATION OF PROSPECTIVE CORRECTIONAL FACILITY SITES



**Criteria—Community Services/Other  
(Points: 10 of 100)**

- Emergency Response Services (Police/ Fire Protection and Emergency Medical Care)
- Adjoining and Nearby Land Uses
- Ownership

**Criteria—Development Costs  
(Points: 10 of 100)**

**Criteria—Community Acceptance  
(Points: 15 of 100)**

The screening was performed by a team working on behalf of the PRC and consisting of such specialists as:

- Urban and Regional Planners
- Civil Engineers
- Environmental Engineers
- Architects
- Environmental Scientists
- GIS Specialists

The screening team inspected each site and, in lieu of time-consuming and costly field investigations, relied largely upon information provided by property owners and gathered from reliable published data sources such as:

- USGS Topographic maps
- USGS Seismic Ratings maps
- USFWS National Wetland Inventory maps
- USDA Soil Surveys
- FEMA Flood hazard maps
- Aerial Photographs
- State and Local GIS databases
- Other sources

The purpose of the screening process was to quickly and efficiently screen sites with the purpose of eliminating those which are unsuitable for correctional facility development while identifying sites that most closely address the PRC's siting criteria. Sites which best conform to the PRC's siting criteria are then subjected to more detailed levels of assessment and evaluation in order to continue to identify and eliminate flawed or unsuitable sites leaving only the most suitable sites for consideration. By applying the site screening criteria, the PRC was able to reduce the number of sites slated to undergo further study and assessment to the highest rated sites listed below.

Location	Site Name
Utah County	Lake Mountains West
Salt Lake County	Airport North
Utah County	Northwest Utah Valley
Salt Lake County	I-80 / 7200 West
Tooele County	SR 112 / Depot Boundary Road
Salt Lake County	Southwest Valley

General and specific locations of the highly ranked sites along with representative photographs are displayed on the pages that follow. Also included is a summary of each site's attributes and strengths.

At present, the PRC Team is focusing on acquiring and evaluating detailed information for the sites it considers best able of being developed with new, state-of-the-art correctional institutions. At the same time, the PRC is developing operational and architectural programs that will define the needs and requirements for the facilities' design and operation.

**Legend**

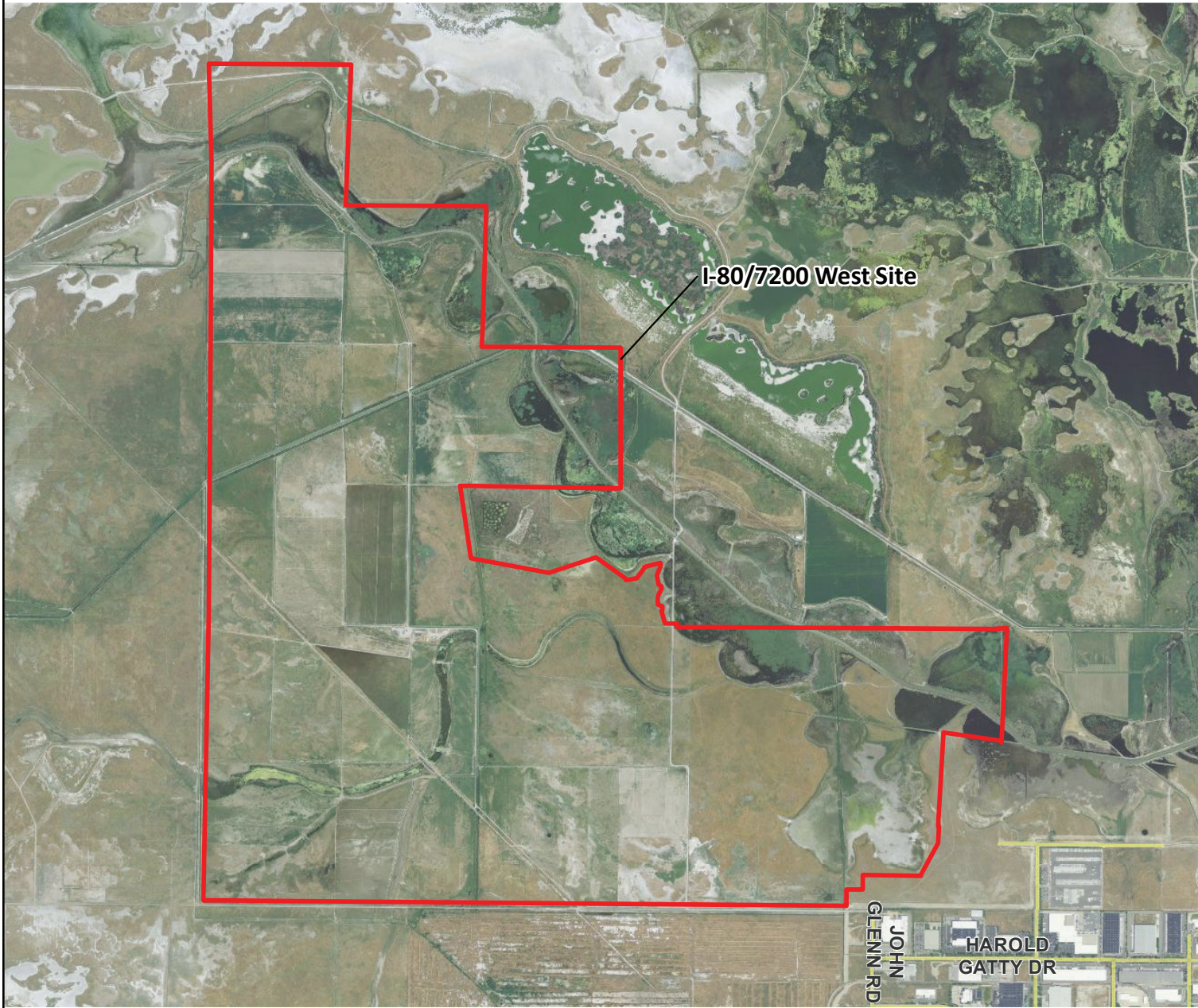
- SR 112/Depot Boundary Road Site - 900 acres
- County Boundary

No critical flaws were identified during the screening process and the site is undergoing further assessment. The site offers particular strengths in such areas as:

- Regional access (via I-80, SR 36, SR 138)
- 500+ acres available
- Relatively isolated location
- Level topography
- Few apparent development constraints
- Potential for infrastructure from two different communities

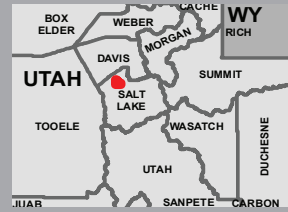
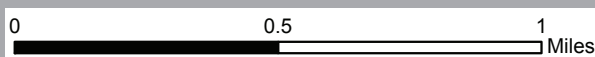


# I-80 / 7200 West



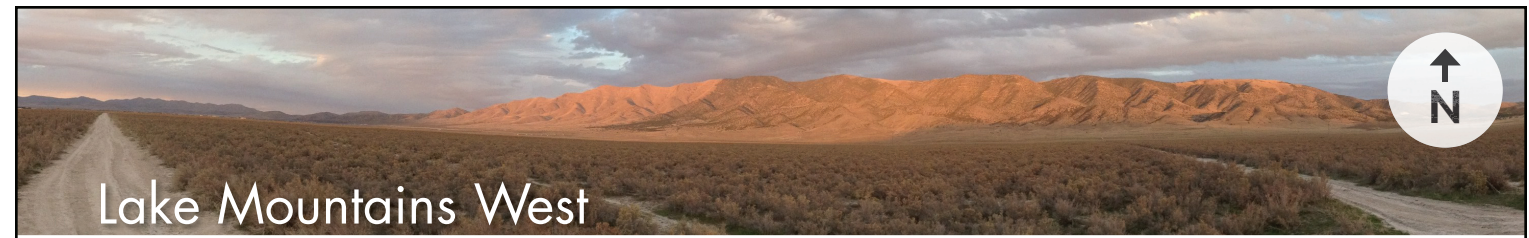
### Legend

- I-80/7200 West Site - 3,000 acres
- County Boundary

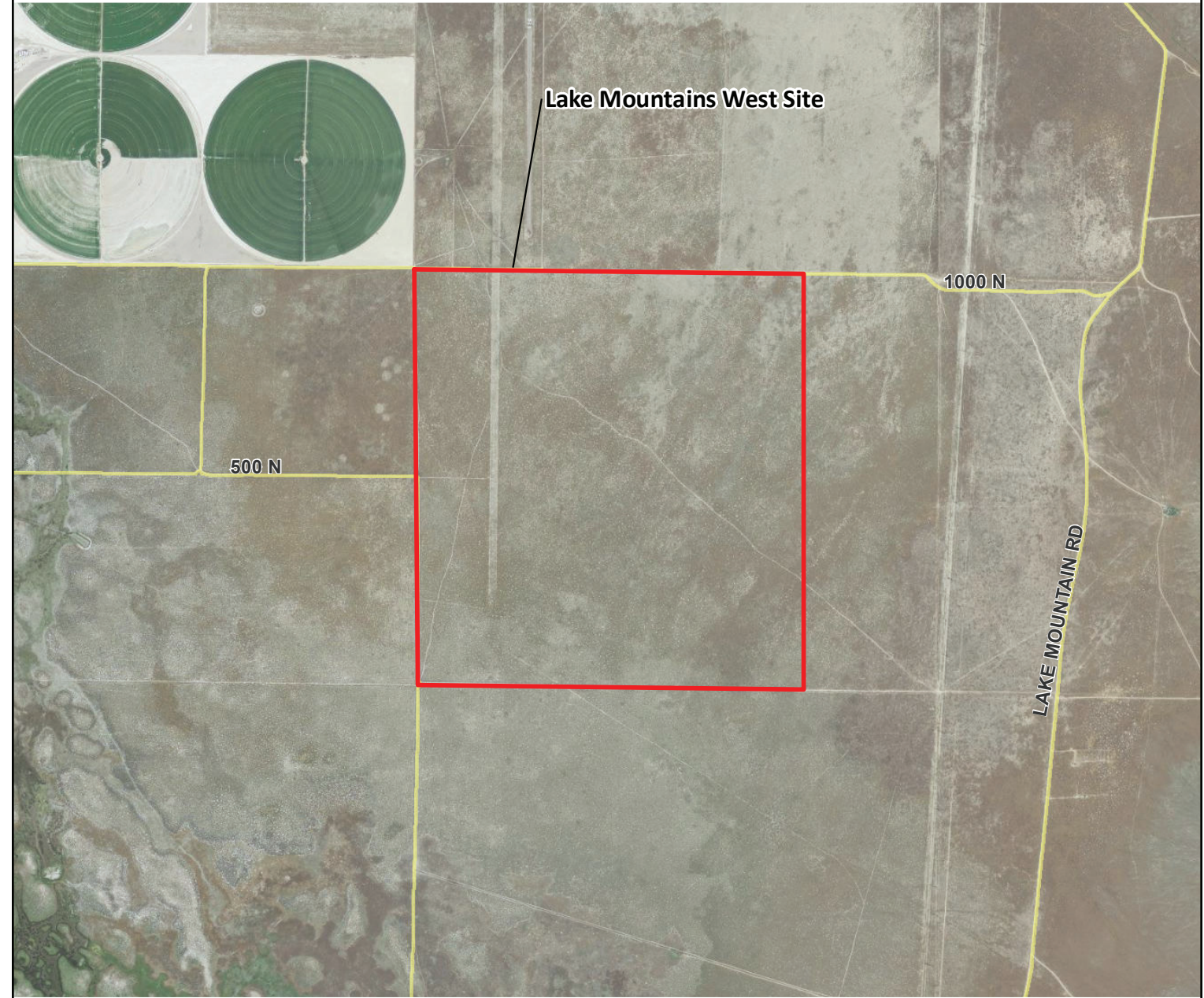


No critical flaws were identified during the screening process and the site is undergoing further assessment. The site offers particular strengths in such areas as:

- Regional access (via I-80, I-15, I-215)
- 500+ acres available
- Level topography
- Relatively isolated location
- Limited environmental constraints
- Proximity to infrastructure

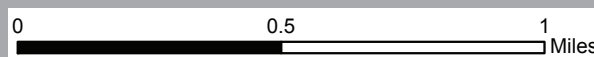


# Lake Mountains West



### Legend

- Lake Mountains West - 600 acres
- County Boundary



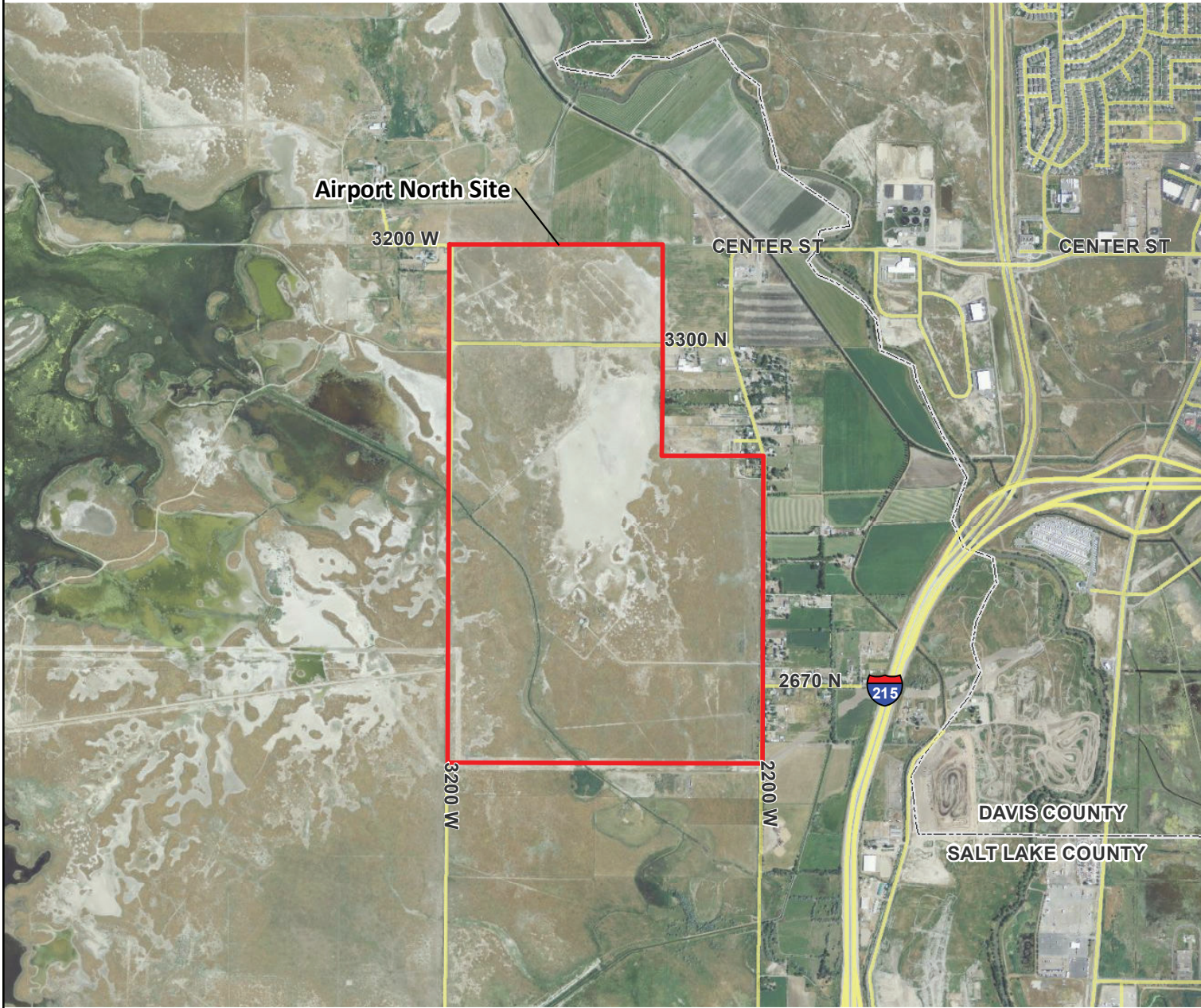
No critical flaws were identified during the screening process and the site is undergoing further assessment. The site offers particular strengths in such areas as:

- 640+ acres available
- Isolated location
- Level topography
- No environmental constraints
- Proximity to infrastructure



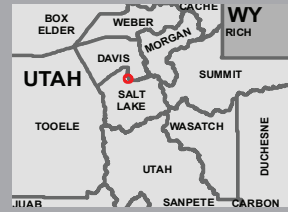
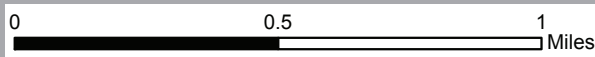


# Airport North



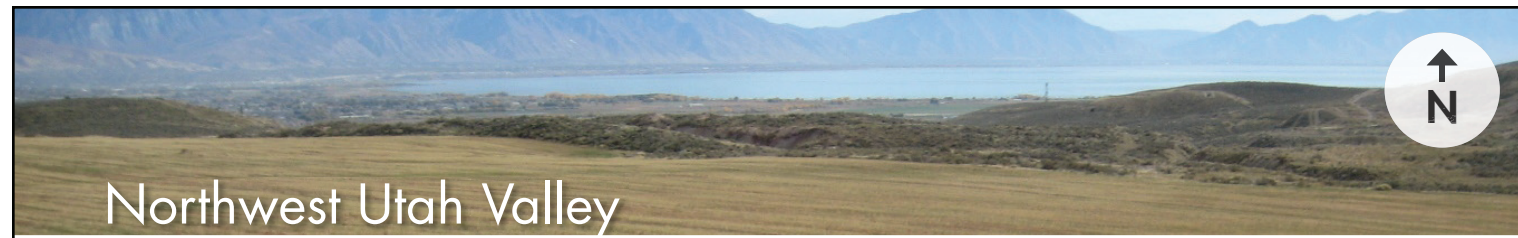
### Legend

- Airport North Site - 508 acres
- County Boundary



No critical flaws were identified during the screening process and the site is undergoing further assessment. The site offers particular strengths in such areas as:

- Regional access (via I-215, I-15)
- 500+ acres available
- Level topography
- Isolated location
- Few environmental limitations
- Proximity to infrastructure

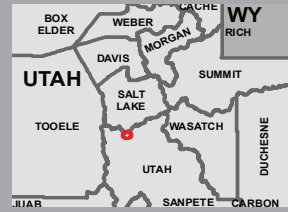
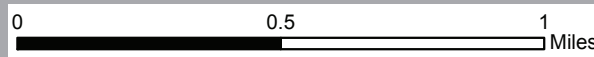


# Northwest Utah Valley



### Legend

- Northwest Utah Valley Site - 475 acres
- County Boundary



On December 10, 2014, the PRC received written notification by the owners of the Northwest Utah Valley site that the property is being withdrawn from consideration as a possible site for a new state correctional facility. Since PRC's site selection process relies upon property owners to willingly offer their property for consideration, all owners are free to make decisions they believe is in their best interest. The PRC appreciates the willingness of the owners of the Northwest Utah Valley site to voluntarily offer their property for consideration and for their support, cooperation and assistance during the study process.