

# Modern Correctional Facility Design



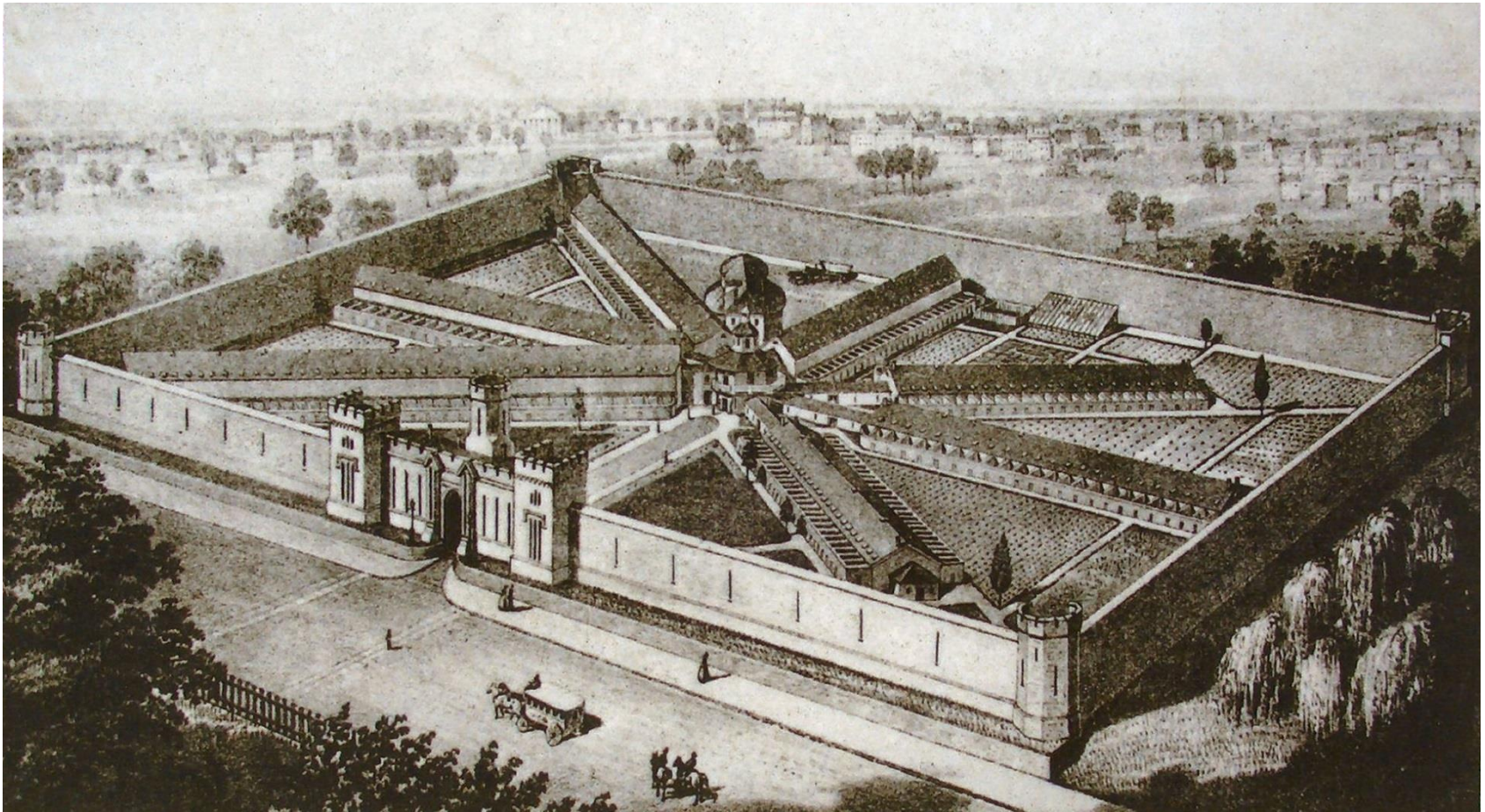
**PRESENTED TO:**

**PRISON  
RELOCATION  
COMMISSION**

**FEBRUARY 27,  
2015**

1800's – Early  
1900's  
Prison Design

# Eastern State Penitentiary - Pennsylvania



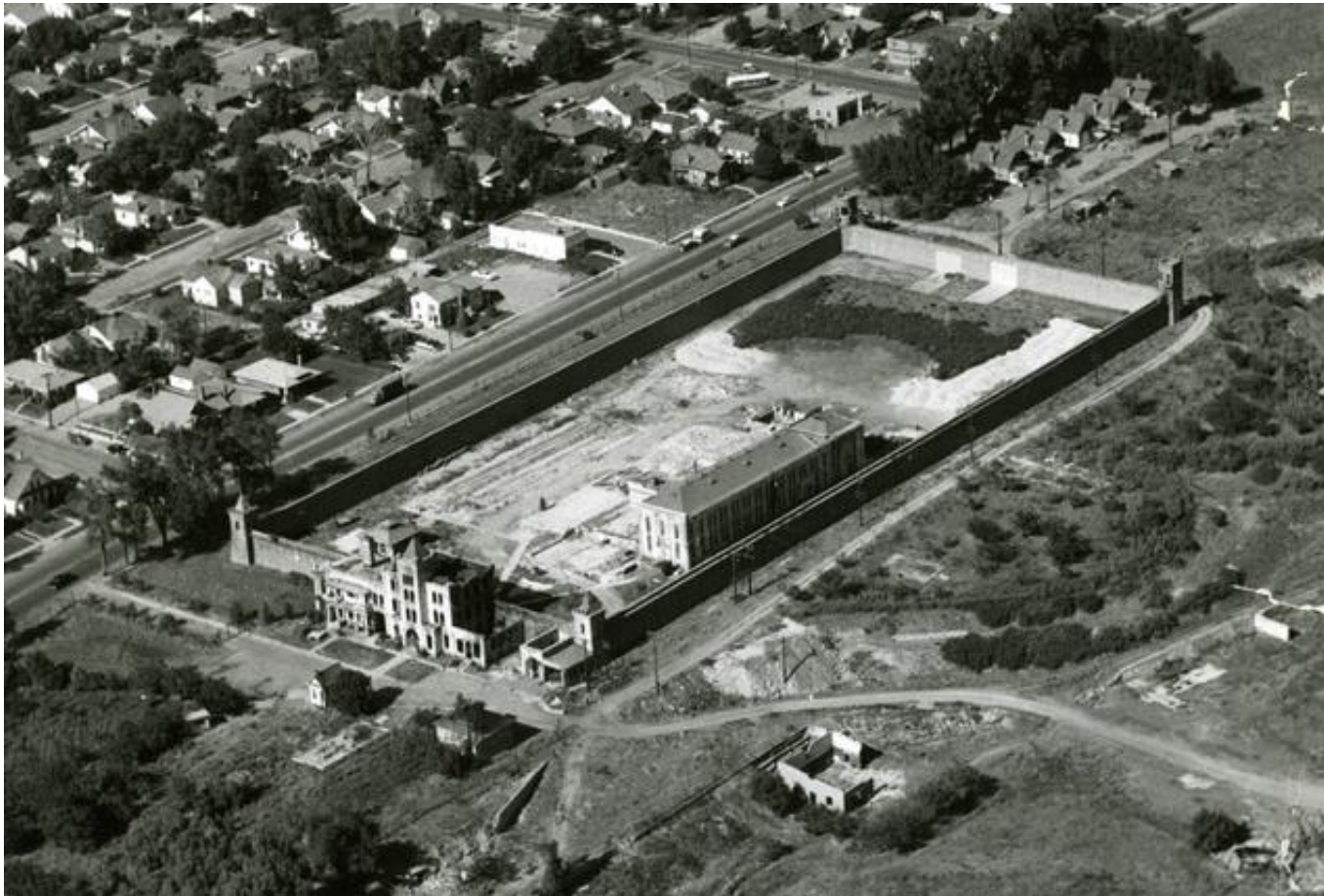
# Attica



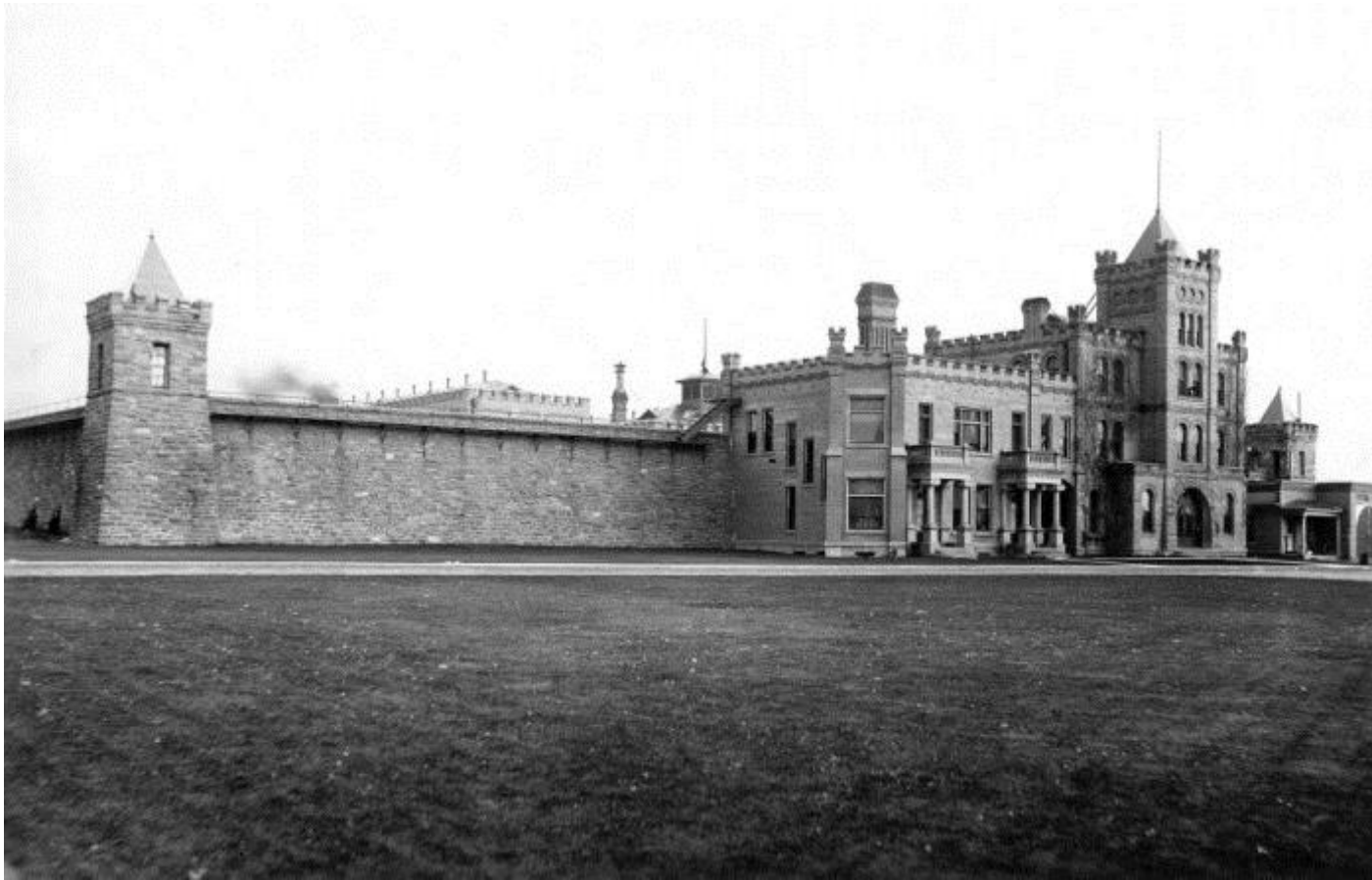
# Joliet



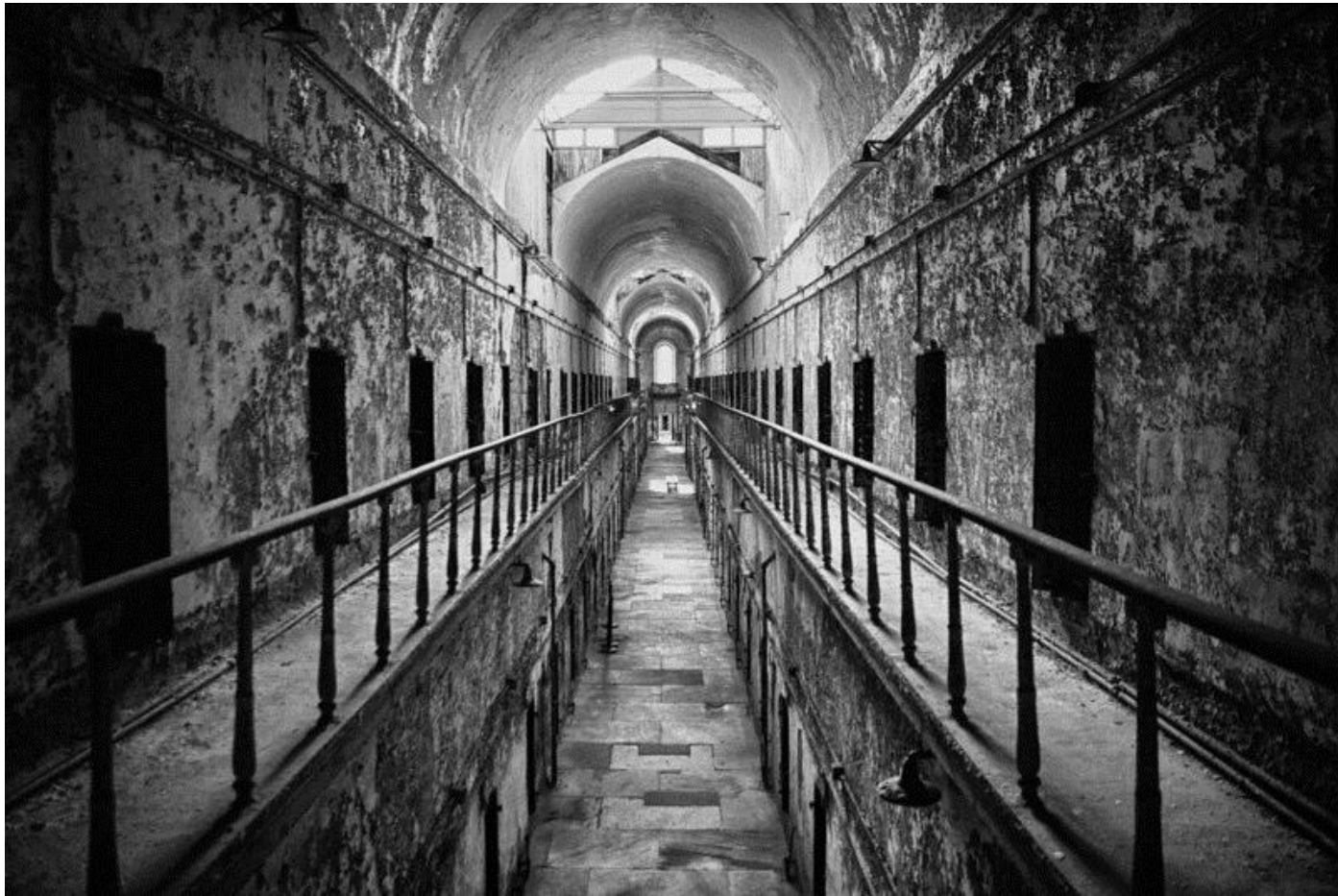
# Sugarhouse Prison: Utah



# Sugarhouse Prison: Utah



# Eastern State Penitentiary

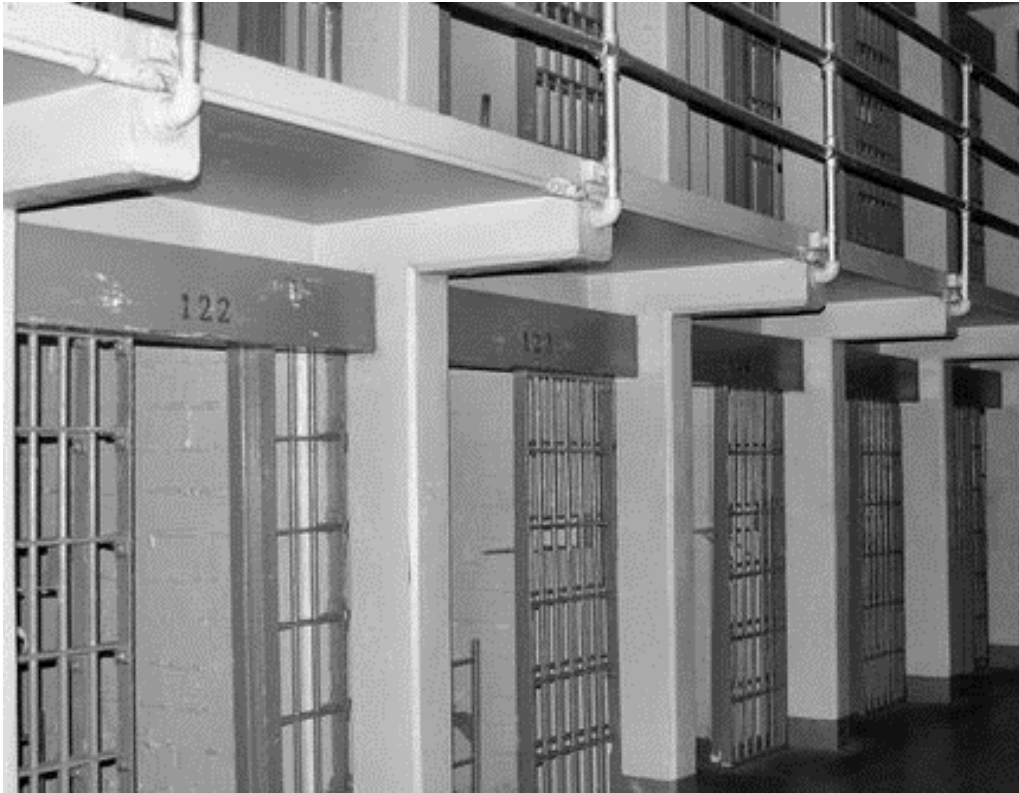




# Interior – Gallery Design



# Draper Prison



# 1970's – 2000 Prison Design

# Prisons built 1990's - 2000



# Modern Prison Design

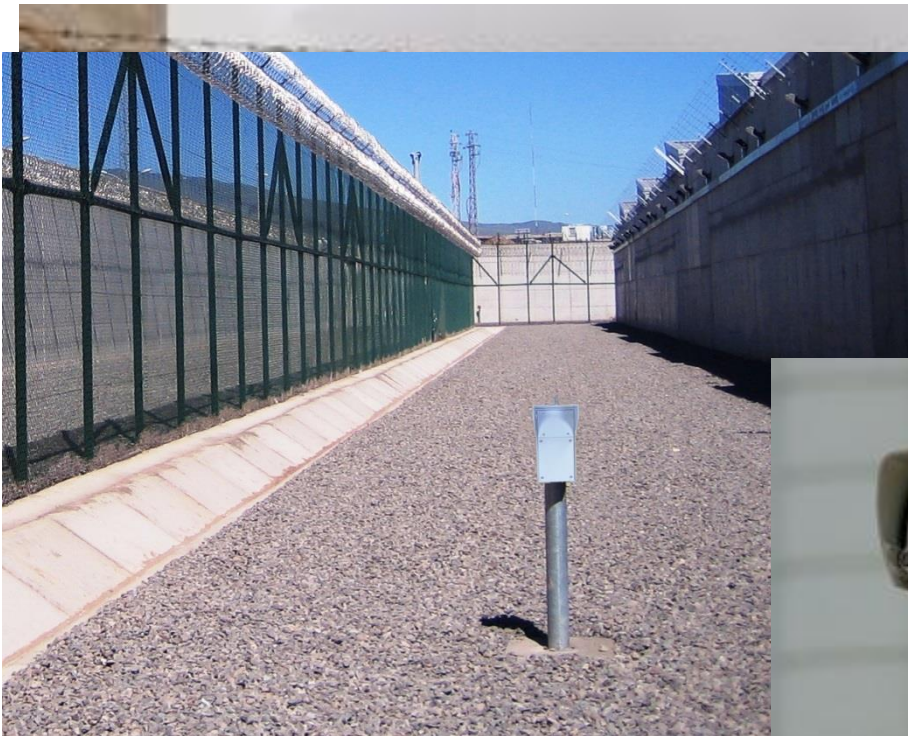
# Fencing



# Lighting



# Towers





# Building Exteriors



# Modern Interiors



# New Prison Characteristics



- **State-of-the-Art Design**

- **More Secure**

- ✦ Better, more effective use of perimeter technology and technology within its perimeter.
- ✦ Improved housing design to allow for modern supervision techniques.
- ✦ Better sight lines to ensure staff can constantly monitor inmates.

# New Prison Characteristics (continued)



## ○ **More Efficient**

- ✦ Elimination of costly towers and multiple entries to facility.
- ✦ Centralization of core functions including food preparation, medical, maintenance, storage and other areas.

## ○ **More Effective at Improving Offender Success**

- ✦ Increased usable space for more programming.
- ✦ Better design allows for greater access to treatment and programs.

# What Could New Prison Look Like?

