

PUBLIC EDUCATION BUDGET OVERVIEW

Understanding Local & State Perspectives



R. Benjamin Leishman, Fiscal Analyst

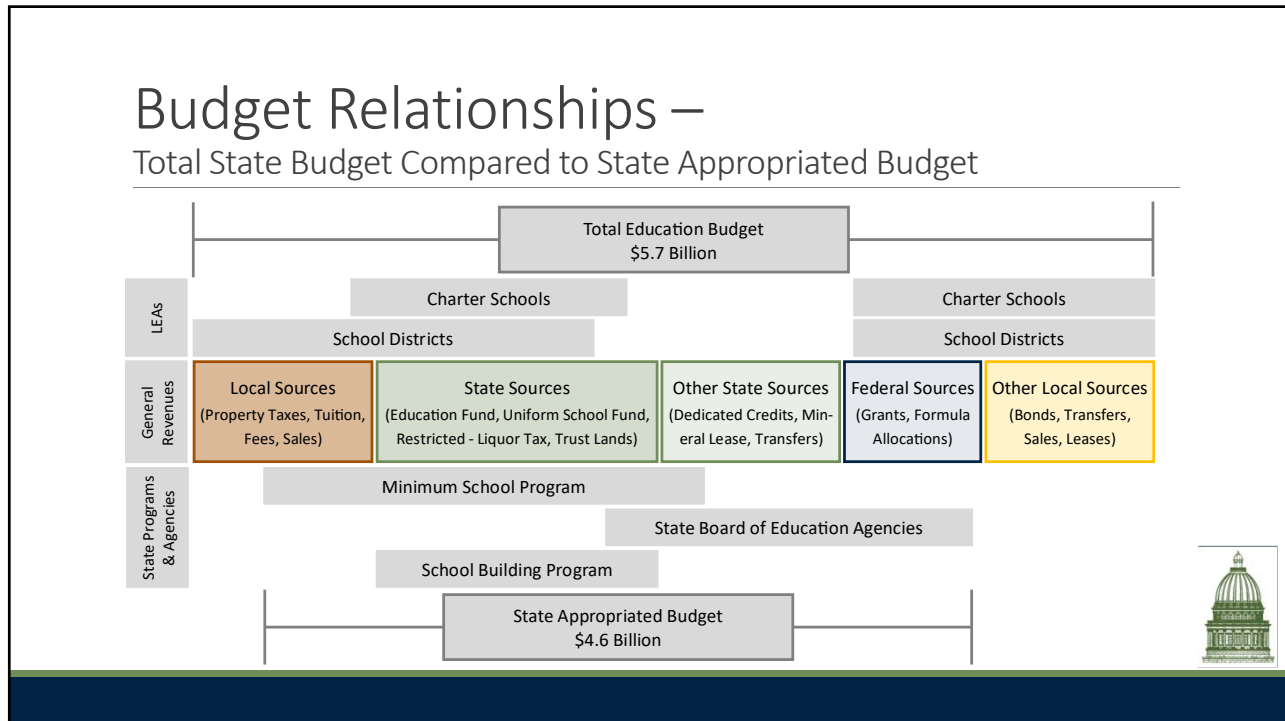
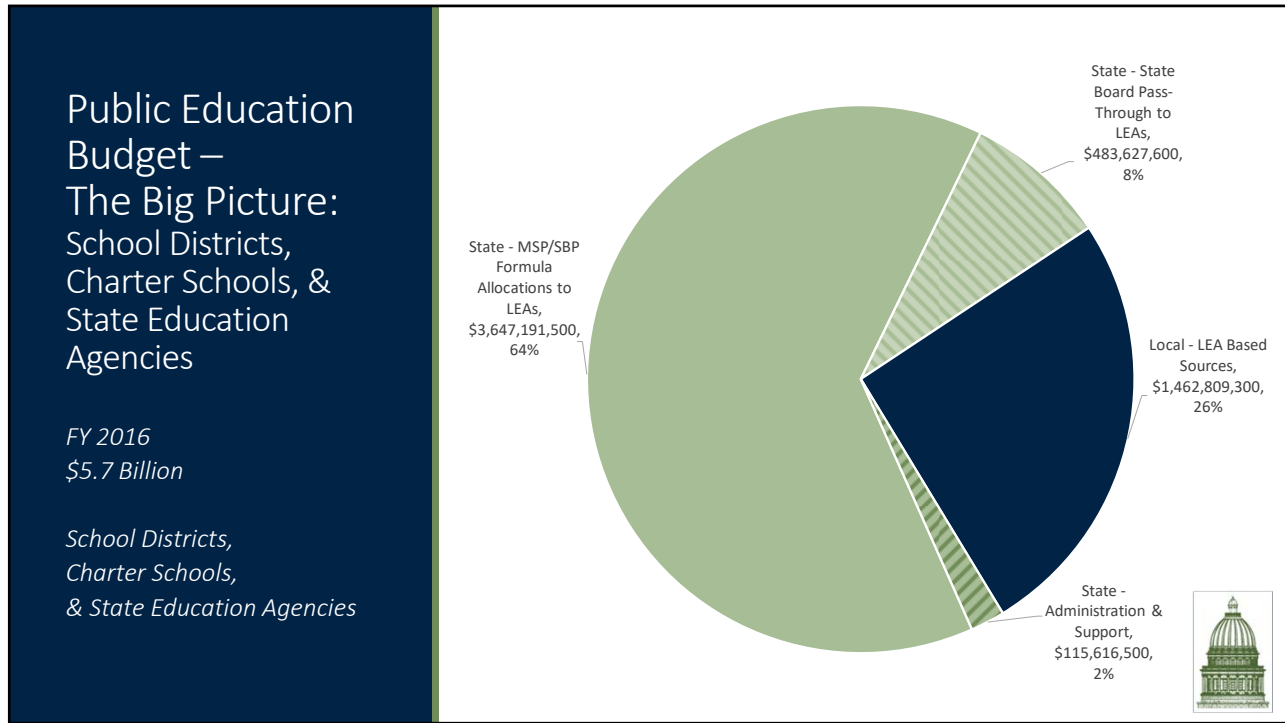
January 2017

Public Education Budget –

What is it? Interpretation Differs Depending on Viewpoint

- The Big Picture
 - All-inclusive Statewide Educational System
 - Mix of Funding Sources
 - Levels of Decision Making
- Local Based View
 - Direct Operation of Schools
 - Local Boards, Superintendents & Directors
 - State Viewed as Revenue Source
- State Based View
 - System Administration & Support
 - Primary Revenue Provider
 - Legislature, State Board of Education, Governor
 - LEAs Viewed as Expenditure
 - Most Expenditures Made by Local Boards





Public Education Budget – Local Based View

As Reported by School Districts & Charter Schools

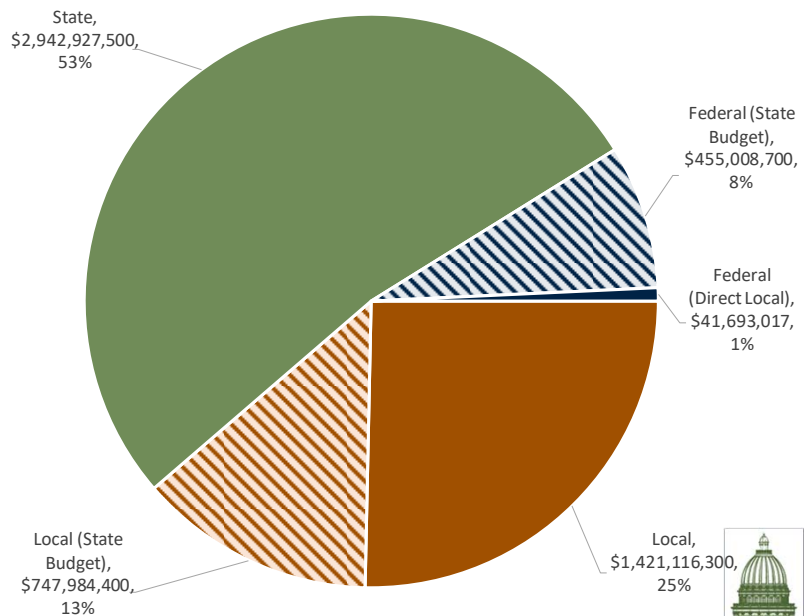
- Includes
 - Funding Appropriated in the State Budget & Passed-through to LEAs
 - Additional Local Revenues
- Budgets Determined by Local Governing Boards
- Revenues & Expenditures Reported Annually
- LEA Data Reports
 - Annual Financial Report
 - Annual Program Report
- Annual Financial Report
 - Total Revenues & Expenditures
 - Based on U.S. Department of Education Chart of Accounts
 - Comparability Across States
 - Different Than State Budget Categories
 - Independent Annual Audit
- Annual Program Report
 - Data by Major Program
 - Detail on State Restricted Programs

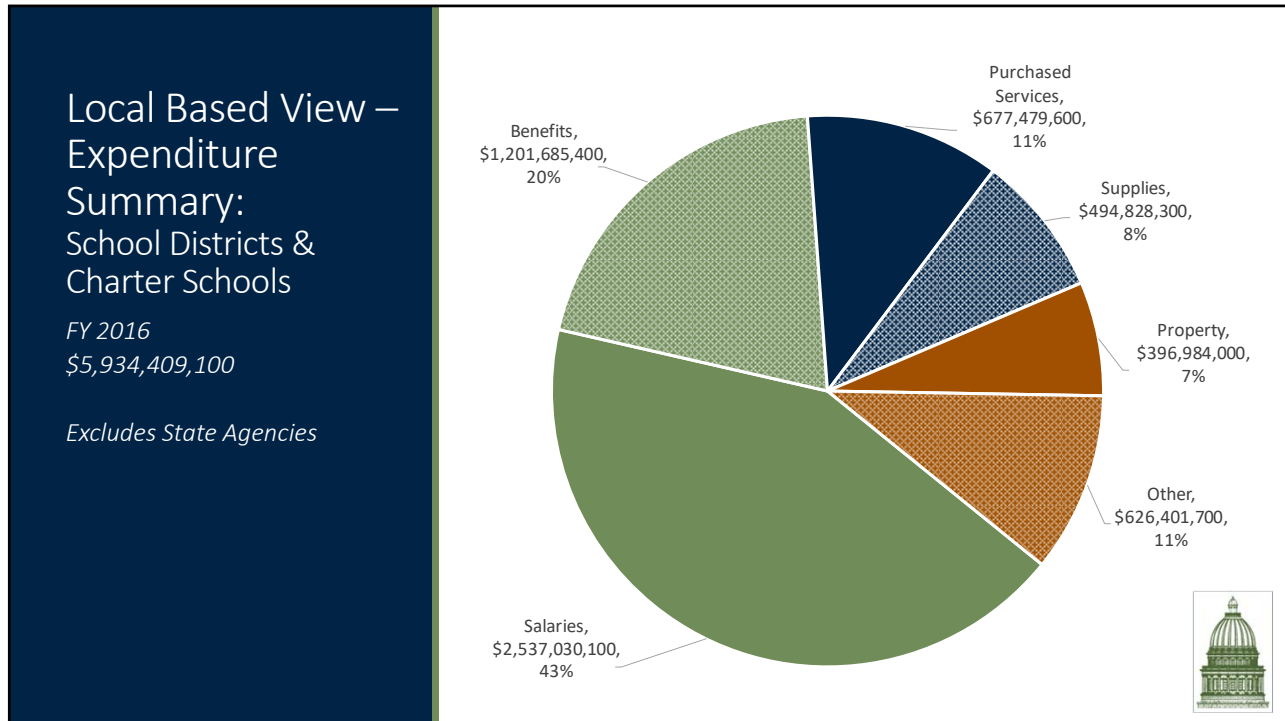


Local Based View – Revenue Summary: School Districts & Charter Schools

FY 2016
\$5,567,036,900

Excludes State Agencies





Public Education Budget – State Based View

State Appropriated Budget & Financial Reporting

- Includes
 - Legislative Appropriations
 - State-Level Administration & Support
 - Pass-Through to Locals – State & Federal Funding
 - Certain Local Property Tax Revenue Sources
- Budget Determined by Legislature & Approved by Governor
- Reported Multiple Times Annually
 - Appropriations Report
 - Compendium of Budget Information
 - Comprehensive Annual Finance Report (CAFR) – Produced by Division of Finance

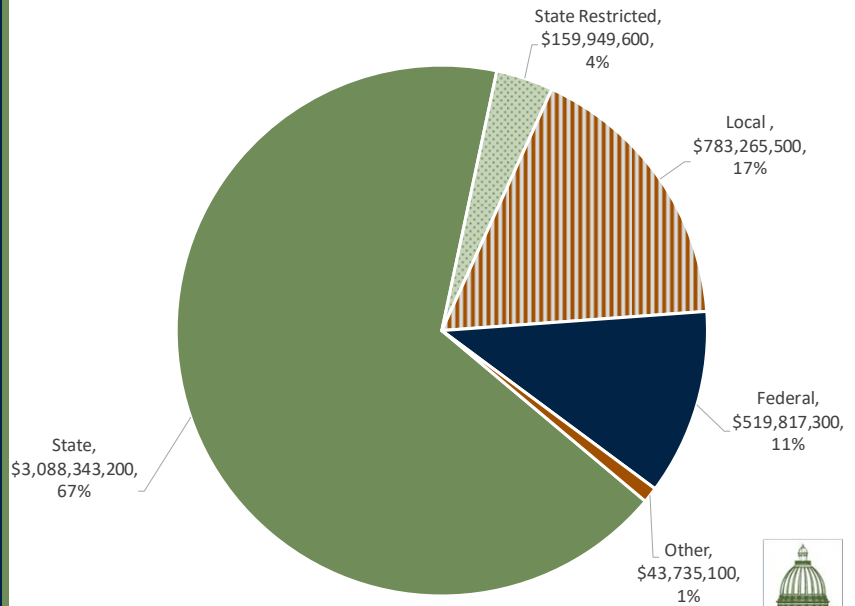
State Based View: Public Education by Major Source

FY 2017
\$4,598,110,700

*State – General, Education, &
Uniform School Funds*

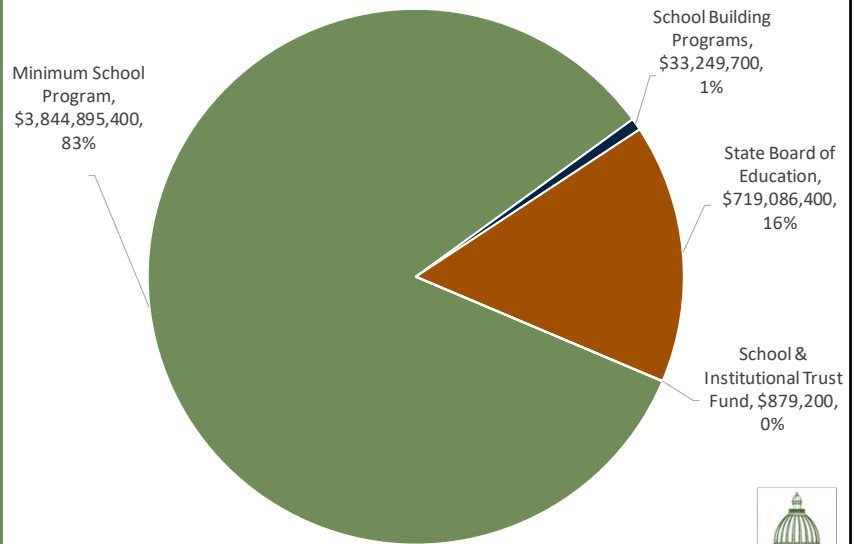
*State Restricted – Minimum
Basic Growth Account, Liquor
Tax, School Trust*

*Local – Property Tax Revenue
Factored into State Formulas
(Revenue Stays w/District)*



State Based View: Public Education by Major Area

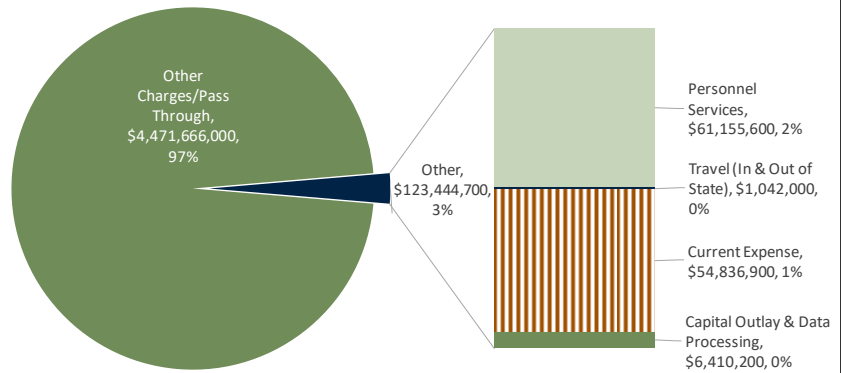
FY 2017
\$4,598,110,700



State Based View: Public Education by Major Expenditure Category

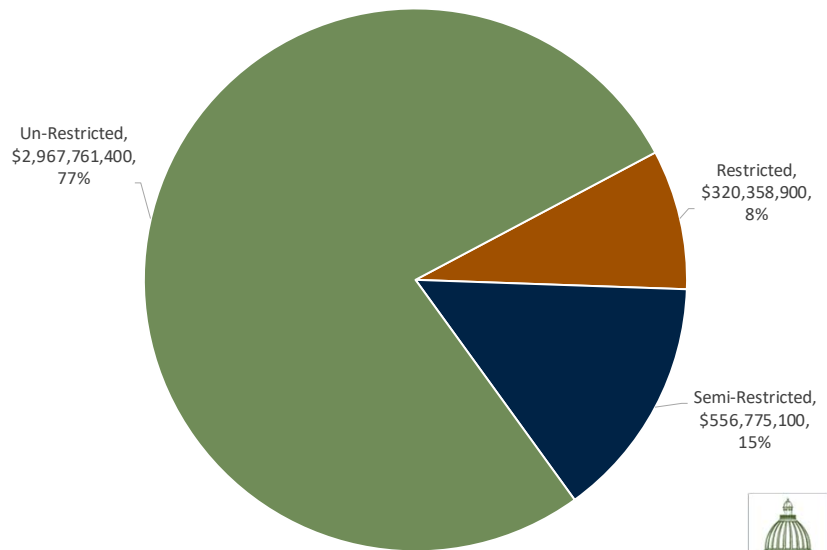
FY 2017
\$4,598,110,700

*Other Charges/Pass Through –
Funding Sent to School
Districts & Charter Schools*



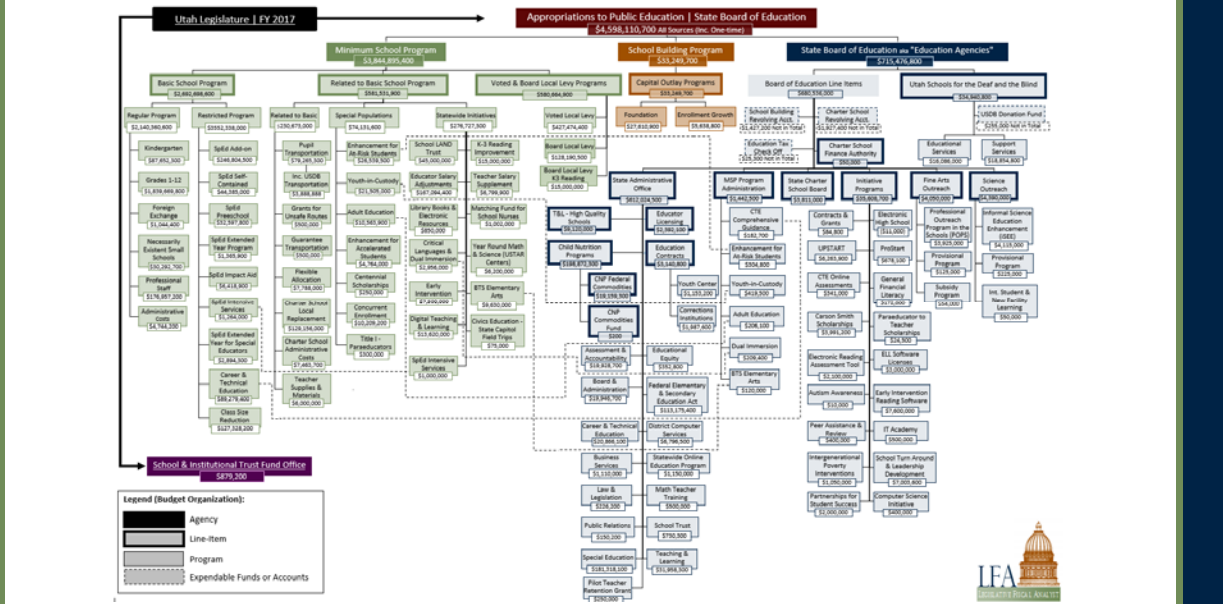
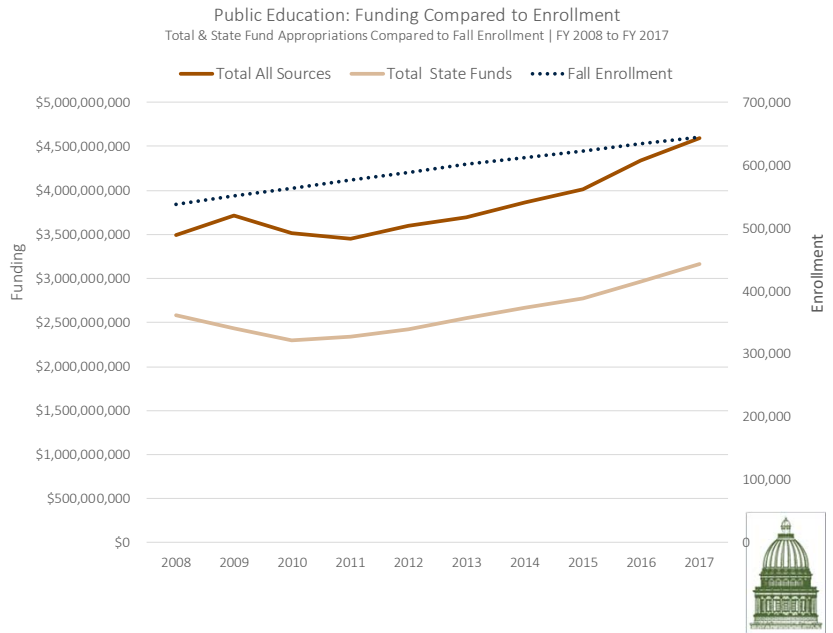
State Based View: Minimum School Program Expenditure Flexibility

FY 2017
\$3,844,895,400



Budget History: Appropriations Compared to Fall Enrollment

FY 2017
 Total - \$4,598,110,700
 State - \$3,163,343,200
 Enrollment - 644,476



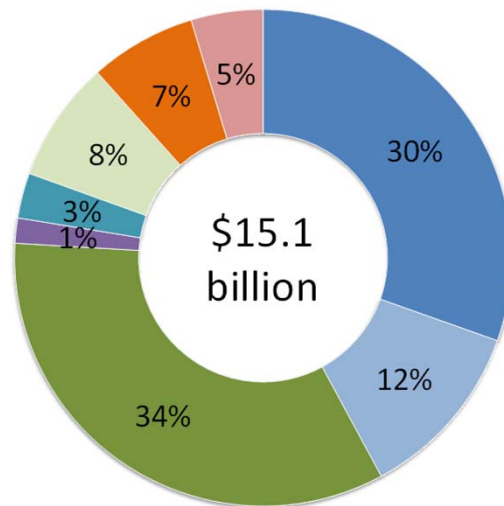
Public Education Budget – State Budget Perspectives

- State Board of Education is the Largest Recipient of Funding
 - 30% of Total Budget
 - 50% of State Fund Budget
- State Fund Appropriations to Minimum School Program
 - 20% of Total Budget
 - 48% of State Fund Budget
- Students
 - Fall 2016 – 644,476
 - 851 More than Projected
 - Fall 2017 (Est.) – 654,565
 - Increase of 10,089 | 1.57%



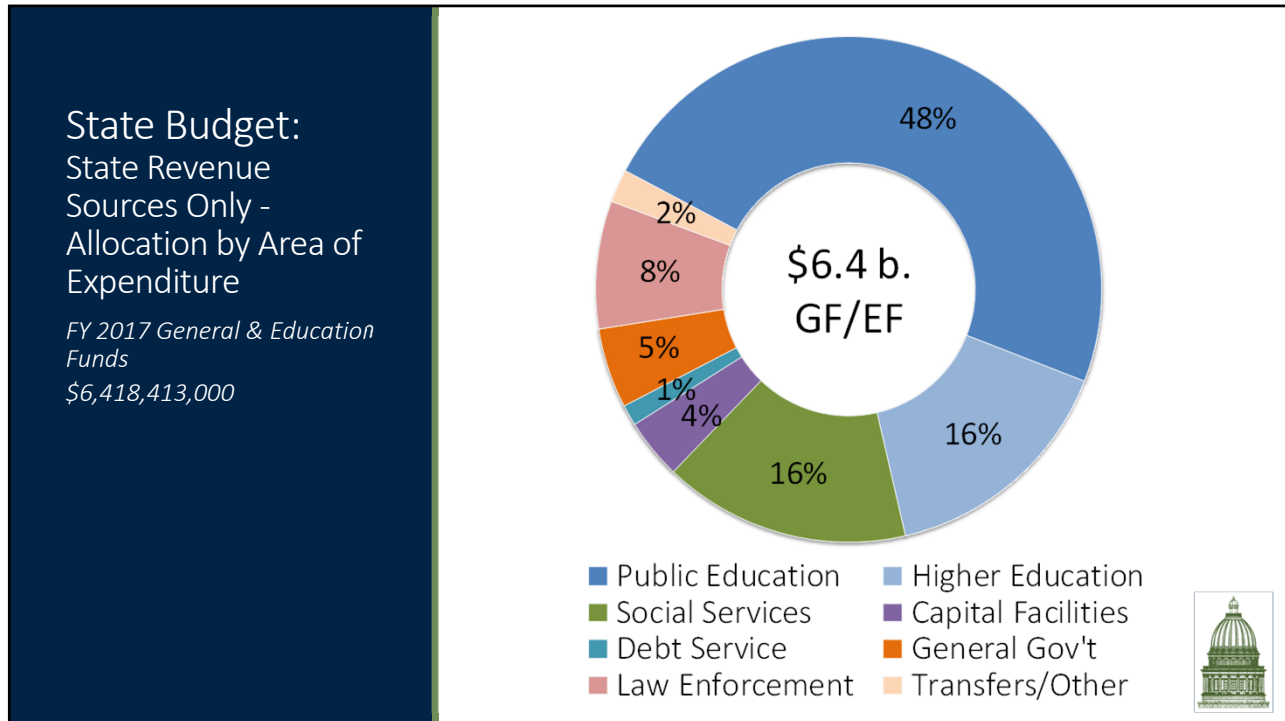
State Budget: Allocation by Area of Expenditure

FY 2017
\$15,118,472,000



- Public Education
- Social Services
- Debt Service
- General Gov't
- Higher Education
- Capital Facilities
- Transportation
- Law Enforcement





Public Education Budget – FY 2018 Base Budget

- Includes FY 2017 Ongoing Appropriations
 - Less One-time Funding Items
 - Some Non-State Fund Changes
 - All Reviewed by Subcommittee

LEGISLATIVE GENERAL COUNSEL
 Approved for Filing: V. Ashby
 01-20-17 4:32 PM

S.B. 1

PUBLIC EDUCATION BASE BUDGET AMENDMENTS
 2017 GENERAL SESSION
 STATE OF UTAH
Chief Sponsor: Lyle W. Hilbard
 House Sponsor: Daniel McCoy

LONG TITLE

Committee Note:
 The Executive Appropriations Committee recommended this bill.

General Description:
 This bill appropriates funds for the support and operation of public education for the fiscal year beginning July 1, 2017, and ending June 30, 2018.

Highlighted Provisions:

- provides appropriations for the use and support of state education agencies;
- provides appropriations for the use and support of school districts and charter schools;
- sets the value of the weighted pupil unit (WPU) initially at \$3,184 for fiscal year 2018;
- sets the estimated minimum basic tax rate at .001596 for fiscal year 2018; and
- provides appropriations for other purposes as described.

Money Appropriated in this Bill:
 This bill appropriates for fiscal year 2018:

- \$4,309,500 from the General Fund;
- \$23,000,000 from the Uniform School Fund;
- \$3,048,635,500 from the Education Fund; and
- \$1,523,276,100 from various sources as detailed in this bill.

S.B.