


# USHE Overview

Higher Education Appropriations Subcommittee  
January 25, 2017

Daniel W. Campbell  
Chair, Board of Regents

David L. Buhler  
Commissioner of Higher Education



Utah System of Higher Education

# Board of Regents Overview

16 appointed by the Governor

3 non-voting

Student ← K-12 → UCAT

Commissioner of Higher Education

Institution Presidents

Selection & Retention of Presidents

Policy Leadership

Program Approval

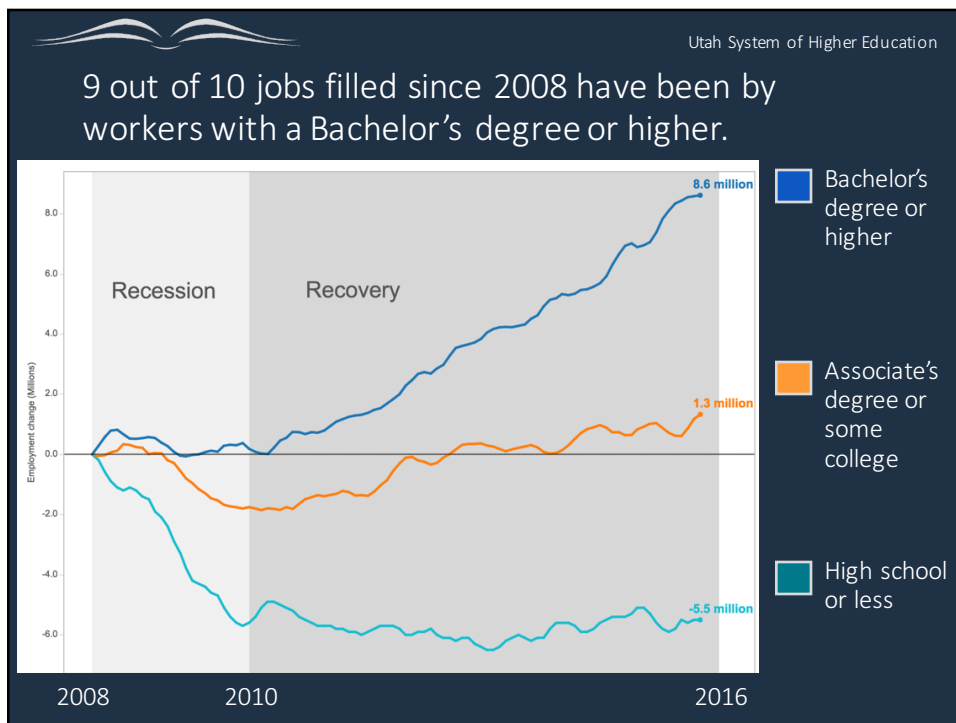
Budget & Facilities Oversight

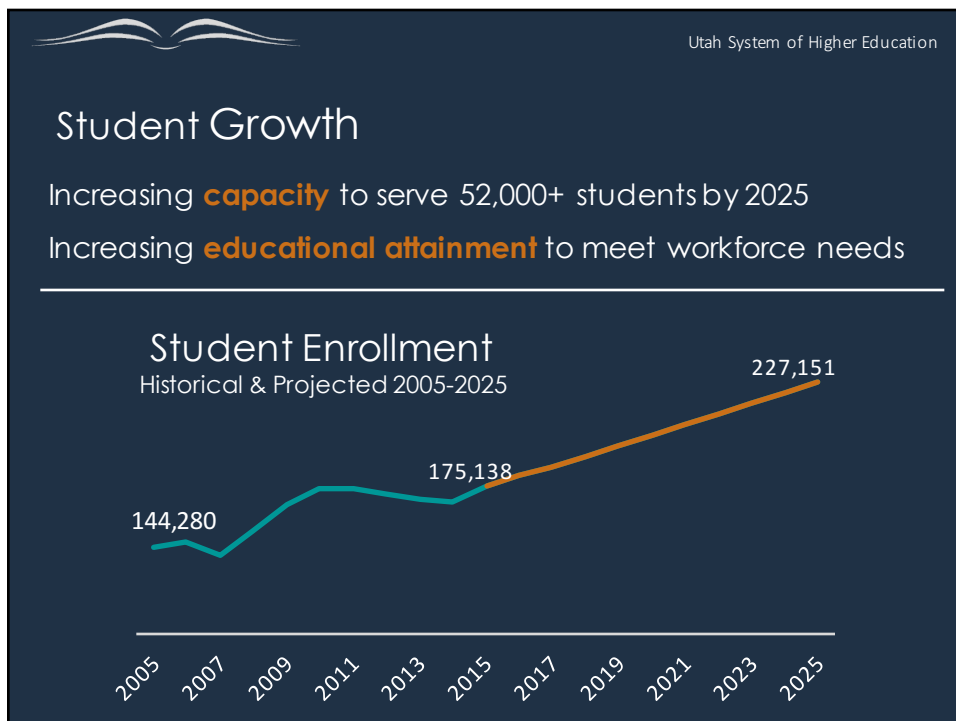
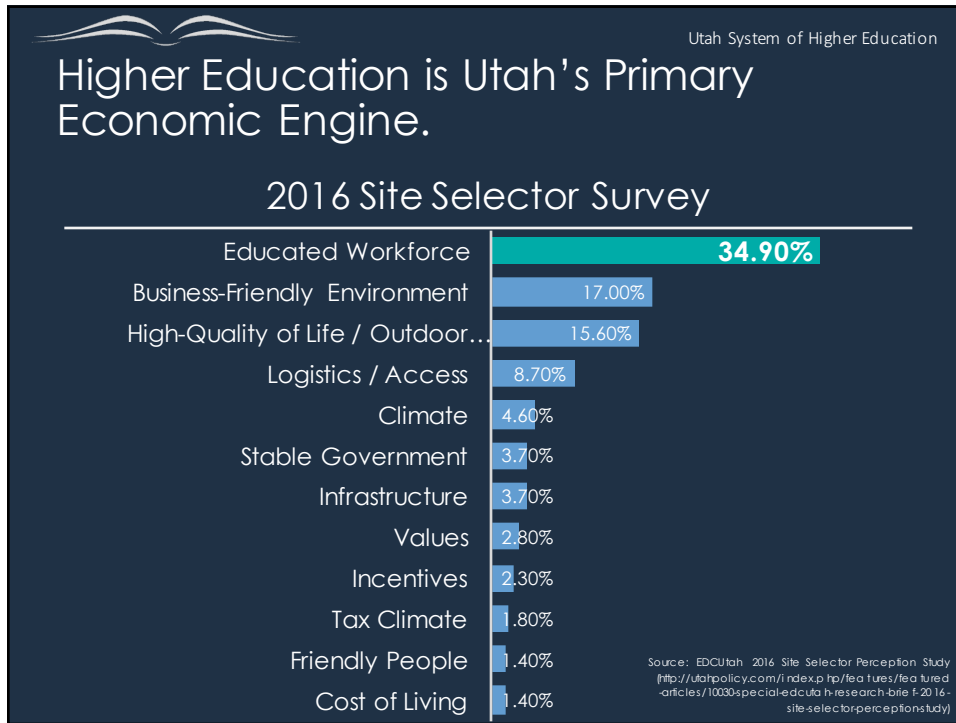
Utah System of Higher Education

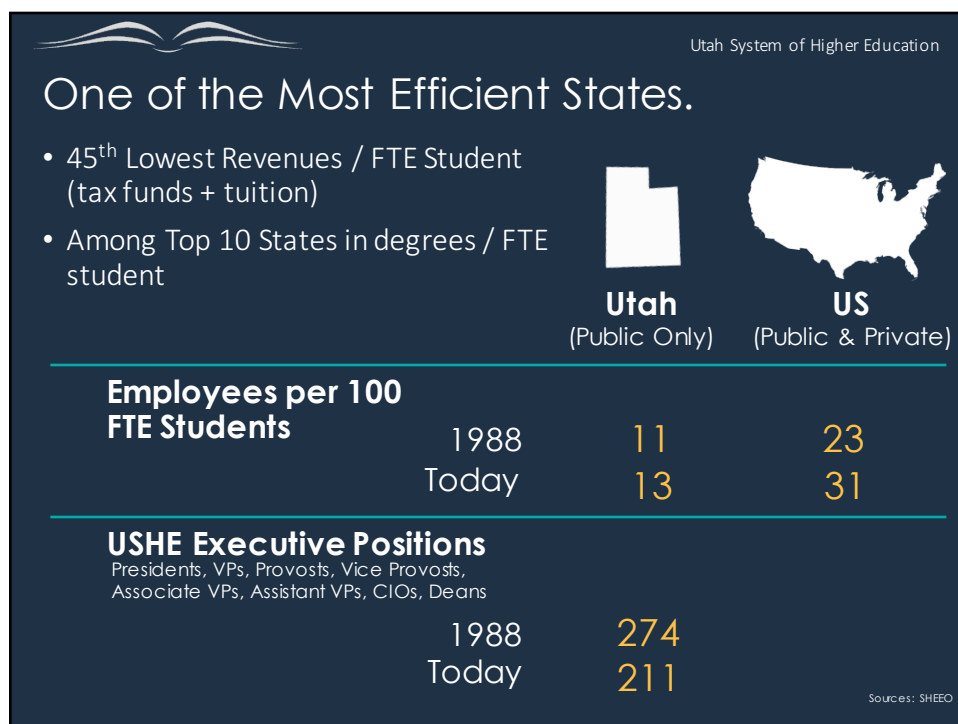
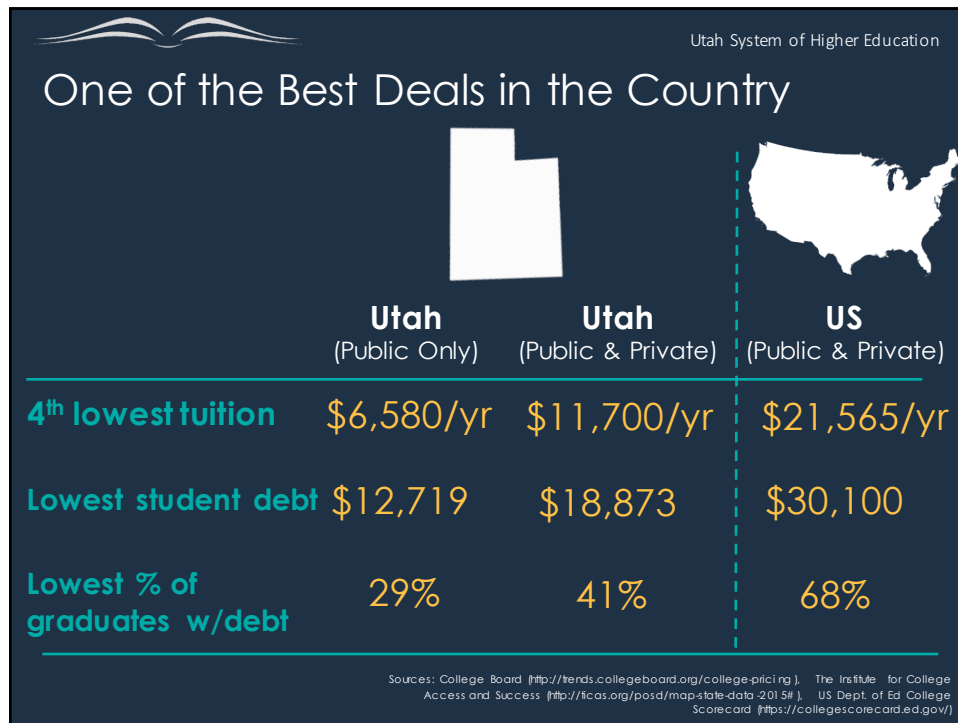
# AMERICA'S DIVIDED RECOVERY

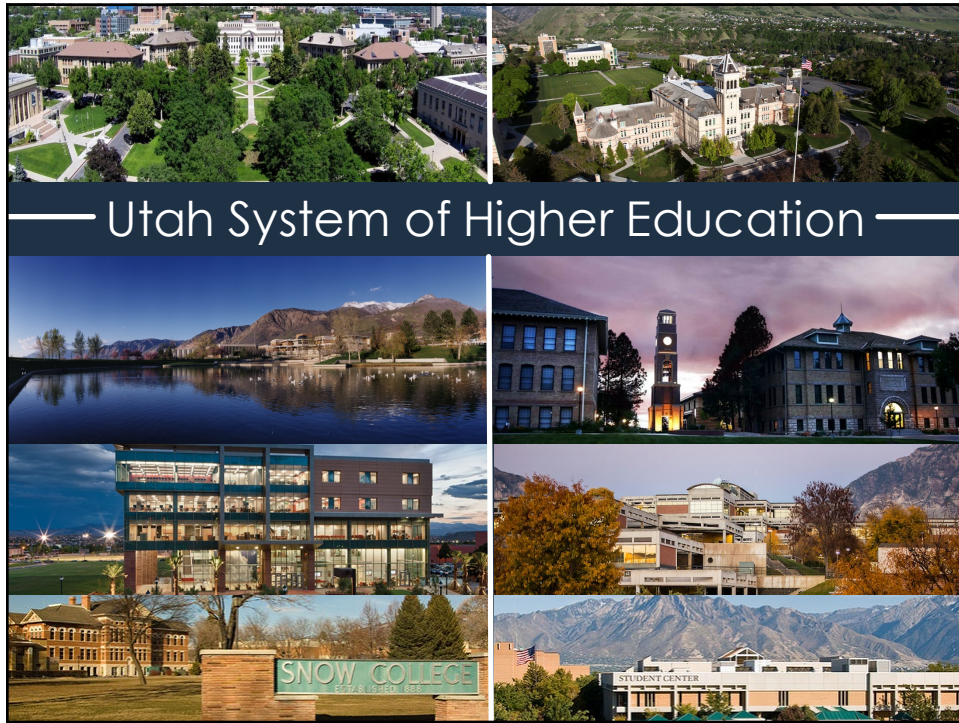
College Haves and Have-Nots  
2016

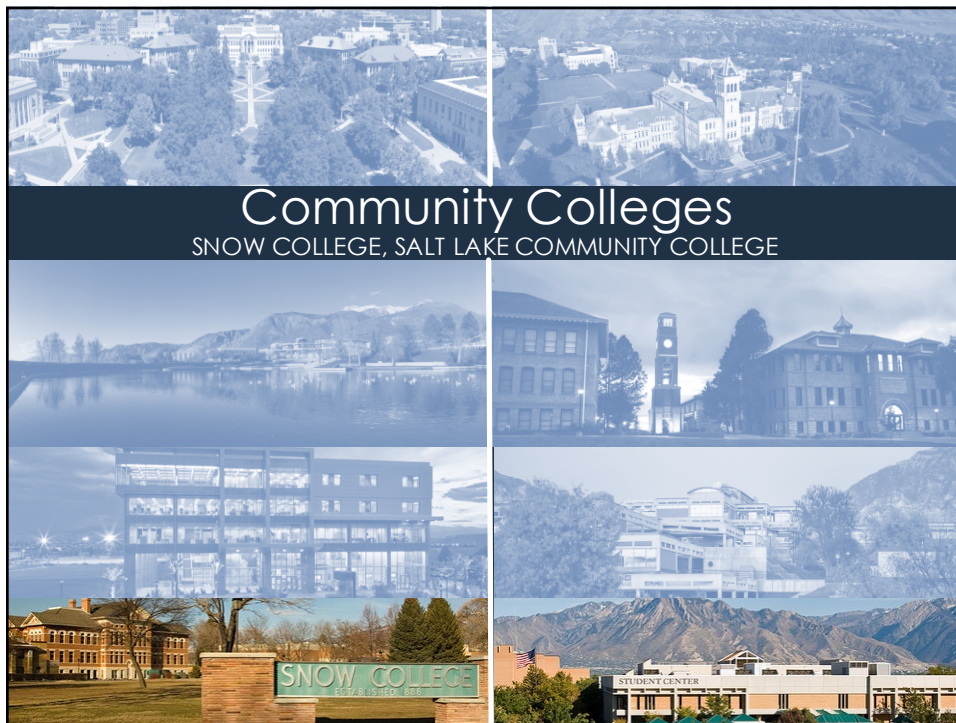
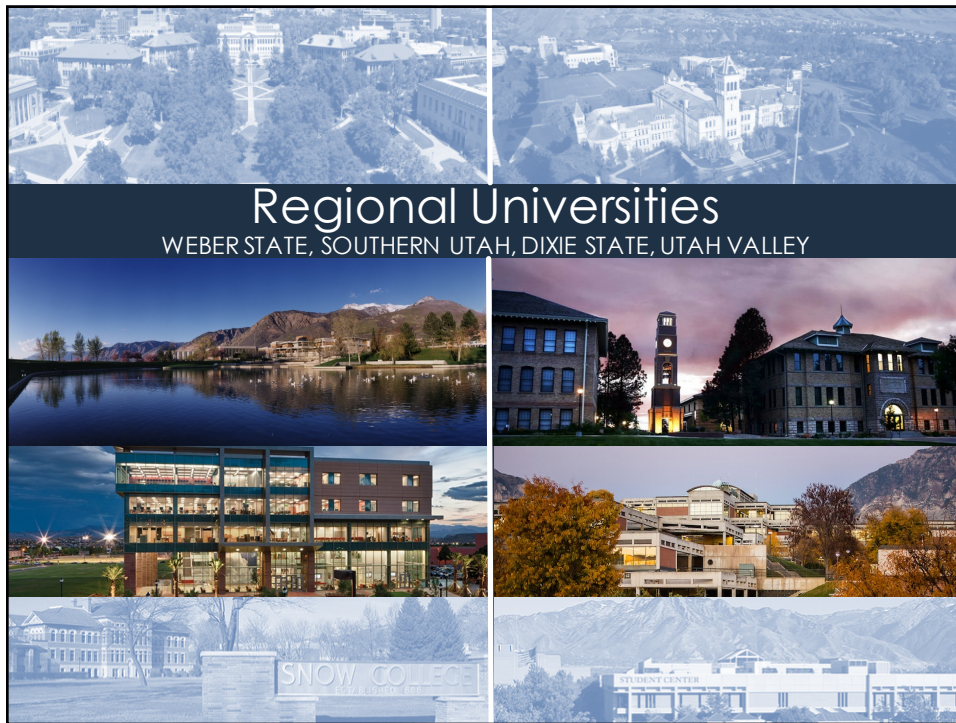
GEORGETOWN UNIVERSITY  
Center on Education and the Workforce  
1789  
McCourt School of Public Policy















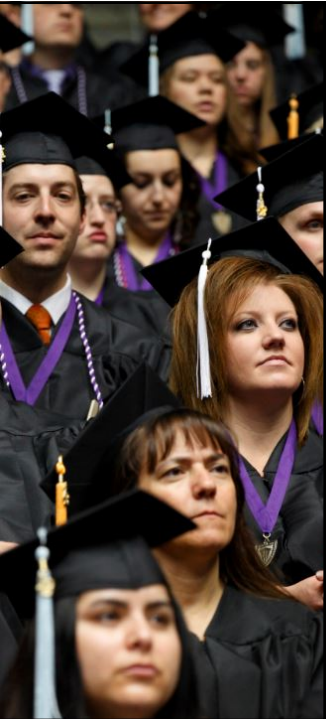
## Students

**8 out of 10** Utah high school graduates who enroll in college, attend a USHE institution

**\$400 million** In additional wages of 2015-16 Utah college graduates in 1<sup>st</sup> year.

**80%** Degrees and certificates awarded in Utah from USHE institutions.

**52,000** Projected additional students by 2025. Equivalent to current enrollments at WSU, SUU, DSU and Snow

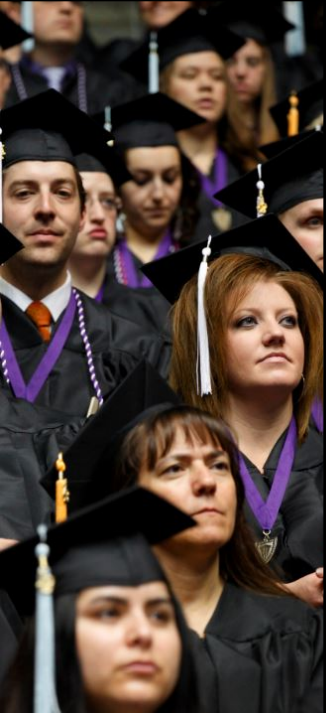


## Students

### Top 5 Areas of Study\*

Health Professions	24%
Business and Marketing	22%
Other STEM (Engineering, Tech., Life Sciences)	17%
Social Sciences (Psychology excluded)	12%
Education	10%

\*Comprises 85% of all USHE degrees and certificates awarded in 2015-16



Utah System of Higher Education

## Utah at a Crossroads:

Youngest population in the nation and a fast-growing economy	Today's jobs require an increasing amount of college and training
--	---

In 2015 the Board of Regents adopted three strategic priorities:

- Affordable Participation
- Timely Completion
- Innovative Discovery

Utah System of Higher Education


## Strategic Plan (2016)

- 10-year strategic plan based on those three strategic objectives.
  - Measurable results.
  - Specific actions defined.
  - Necessary investment.



Utah: A State of Opportunity  
Utah State Board of Regents Strategic Plan 2025





Utah System of Higher Education


## Affordable Participation:

GOAL: Increase the number of Utahns who decide to access, are prepared for, and succeed in higher education.

METRIC: Increase the percentage of Utah high school graduates enrolling in college within five years to 75% by 2024-25.

PROGRESS:

2015:	66%
2016:	69%



Utah System of Higher Education

## Timely Completion

GOAL: Increase the percentage of students who persist in and graduate from higher education.

METRIC: Increase degree productivity to 28 awards per 100 FTE by 2024-25.

PROGRESS:

2015:	25 degrees per 100 FTE
2016:	26 degrees per 100 FTE

Utah System of Higher Education

## Innovative Discovery

GOAL: Encourage innovation as a core value at each USHE institution, in keeping with its distinct mission.

METRIC: Regularly assess student involvement in high impact learning practices.


Utah System of Higher Education

## Progress Report (2017)

- Update on the metrics and progress of the strategic objectives.
- Update on the investment.
- Next steps of the Commissioner's Office for 2017.




The image shows the cover of the 2017 Progress Report. It features a stylized sun with rays in shades of orange and yellow. The text on the cover includes '2017 Progress Report' in the top right corner and 'Utah: A State of Opportunity' at the bottom, with a smaller line of text below it: 'Utah State Board of Regents Strategic Plan 2025'.



Utah System of Higher Education

## Investing in the Strategic Objectives

- Projected average increase of 5% in its operating budget.
- Since FY 2015, USHE operating budget has increased approximately an average 4.6% annually, falling slightly behind the projected need.



Utah System of Higher Education

## 2017-18 Operating Budget Request

2016-17 Base Budget	\$881,711,600
1. 3% Performance-based Employee Comp. <small>Assumes 75/25 and 2% 1<sup>st</sup> tier tuition</small>	\$ 32,878,200
2. Student Growth and Market Demand	\$ 23,570,800
3. Performance Funding	\$ 9,979,000
<b>Total USHE Operating Budget Request (+7.5%)</b>	<b>\$ 66,428,000</b>
 Regents' Scholarship	 \$ 11,205,800