

Utah Joint Education Conference, Sept. 2, 2015

Session I, 9-9:30am



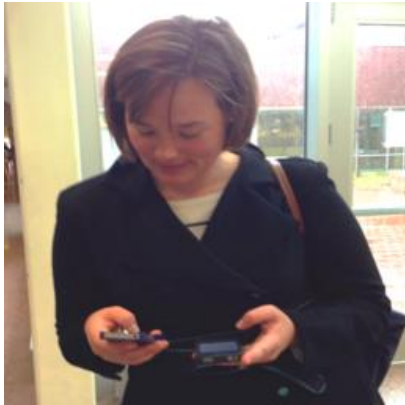
# National Perspective on Competency-Based Education

Tom Vander Ark, @Getting\_Smart @tvanderark  
Karla Phillips, @ExcelinEd, @azkarla



# *How has the world changed?*

# Connected, Contested, Complex, Competitive



# New Demands, New Skills

- Connected
- Contested
- Complex
- Contribution
- Competitive



- Communicate
- Collaborate
- Critical Thinking
- Creativity
- Crank

***For people and communities,  
skills = opportunity!***

# New Forms of Contribution Are Valued

## Nonconformity:

*“Brilliant thinking is rare, but courage is in even shorter supply than genius.” Peter Thiel*

## Creativity:

*“We're going to need every ounce of ingenuity, imagination, and creativity to confront...problems.” Sir Ken Robinson*

## Design Thinking:

*“Tools, methods, and processes to create new answers for challenges.” IDEO*





# How is learning changing?



Blended,  
Personalized &  
Competency-Based



# Cohorts to Competency



# Utah Definition

*An education approach that requires a student to acquire a competency and includes a classroom structure and operation that aid and facilitate the acquisition of specified competencies on an individual basis wherein a student is allowed to master and demonstrate competencies as fast as the student is able.*

53A-1-409



# iNACOL Definition

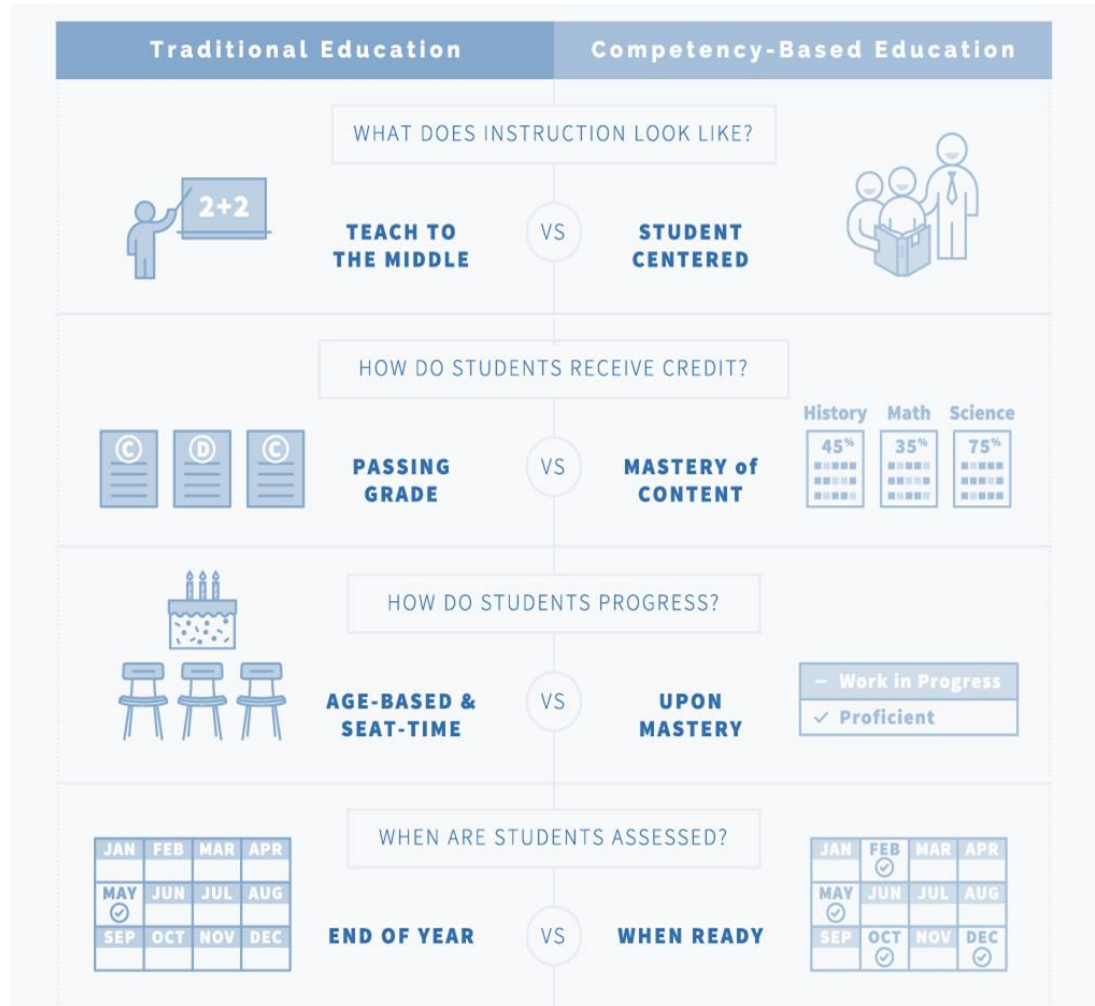
- Students advance upon mastery.
- Competencies include explicit, measureable, transferable learning objectives that empower students.
- Assessment is meaningful and a positive learning experience for students.
- Students receive timely, differentiated support based on their individual learning needs.
- Learning outcomes emphasize competencies that include application and creation of knowledge along with the development of important skills and dispositions.

# What is Competency-Based Education?

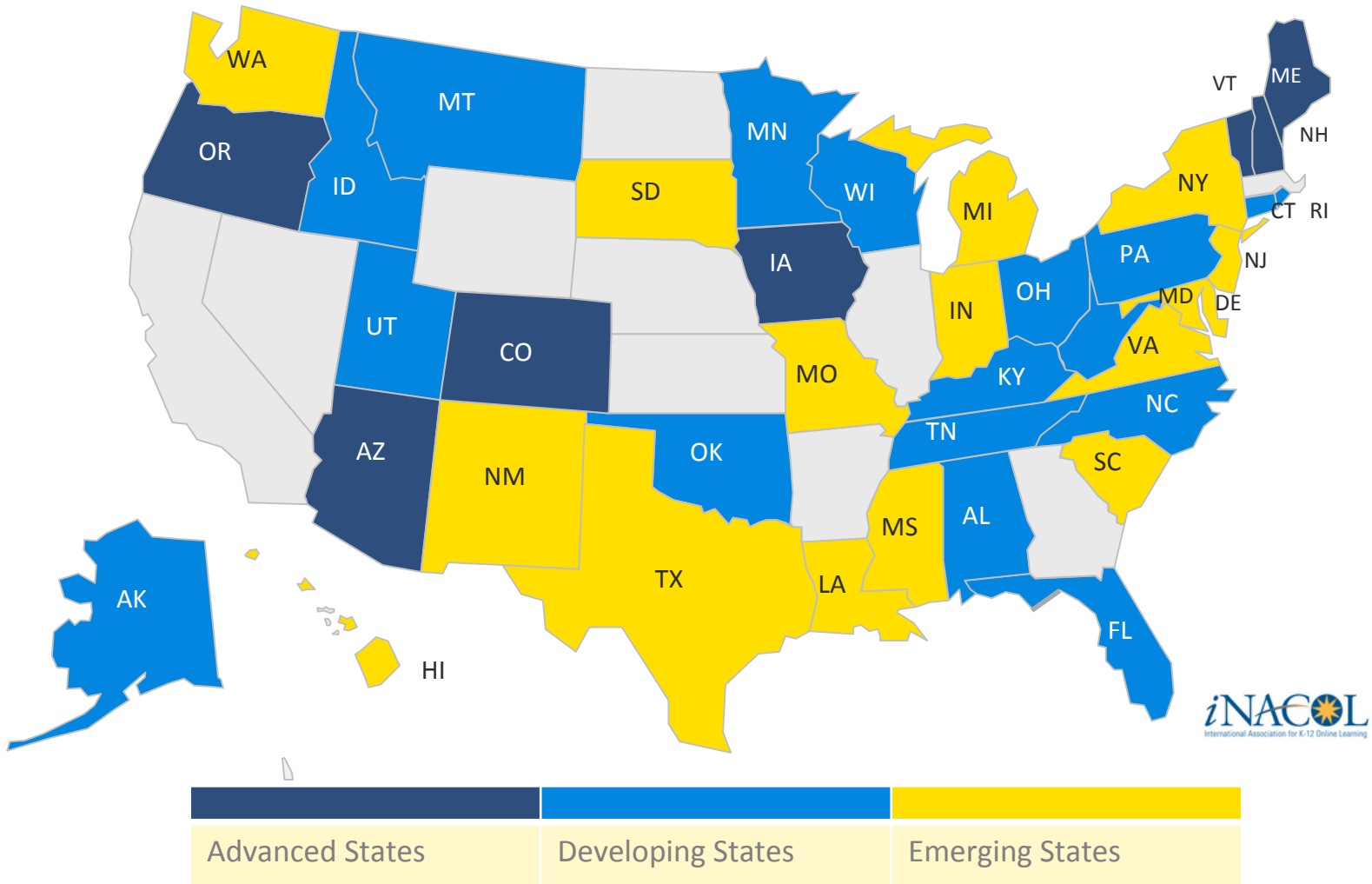
Time should be the variable, and learning the constant.

A system where students advance to higher levels of learning after demonstrating mastery of concepts and skills.

## Shift in Instruction and Learning:



# Competency-Based Education



Source: INACOL

# Implementation Challenges

- 1 State Graduation Requirements
- 2 Data Systems
- 3 Assessment Policies
- 4 Accountability
- 5 School Finance

# Challenge 1: State Graduation Requirements



## **New Hampshire:**

Abolished Carnegie Unit and directed that all high schools determine credit by students' mastery of material, rather than time spent in class.



## **Colorado:**

Embedded competency-based education into graduation guidelines.



## **Maine:**

Proficiency Based diplomas legislated: Beginning in 2017, a diploma indicating graduation from a secondary school must be based on student demonstration of proficiency.



# Challenge 2: Data Systems

Competency-based learning

VS

Current Learning management systems

- Competency-based learning strains existing data systems: Student management systems, interaction with state data reporting systems, record keeping system/ gradebook.
- Current learning management systems are difficult to use in a system committed to flexible pacing and numerous pathways for their students to advance.

# Challenge 3: Assessment Policies

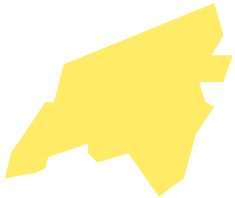
## State Policies



**Ohio** Innovation Lab Network assessment waivers.



**New Hampshire** USED waiver – the Performance Assessment of Competency Education (PACE).



**North Carolina** SBE recommend to pilot through course assessments. 9,000 5th and 6th graders will take shorter assessments throughout the year.

## Federal Policies



Innovative Assessment and Accountability Demonstration Authority in Senate ESEA Reauthorization bill.

# Challenge 4: Accountability



Senate ESEA Reauthorization proposal includes accountability.



Proficiency and growth should both play a role.

## How can accountability and competency-based education co-exist?

Accountability systems will need to reinforce a pace that reflects a four year graduation expectation while providing incentives for acceleration and credit for students needing extended time for achieving readiness.



# Challenge 5: School Finance

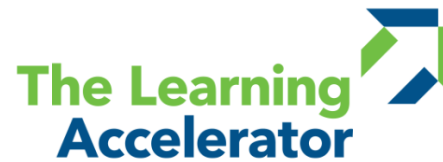


- The days of students sitting behind a desk in the same school for the exact amount of legally required minutes are slipping away.
- A school finance system based on the amount of time students physically spend in a building or in a desk **creates a zero-sum game and has multiple implications**

# Resources and Materials

## Policy Resources

- **ExcelinEd** Fundamental Principles
- **Digital Learning Now: [The Shift from Cohorts to Competency](#)**
- **CompetencyWorks: [Aligning K-12 State Policies with CBE](#)**
- **iNACOL - *CompetencyWorks*: [Necessary for Success](#)**
- **Achieve: [Advancing Competency Based Pathways to College and Career](#)**
- **KnowledgeWorks: [Policy and Political Landscape for K-12 Competency Education](#)**
- **CCSSO: [Roadmap for Competency-Based Systems](#)**







# Moving Forward



# Where Can States Begin?

1

## **Flexibility from Time Based Systems**

Eliminate policies that tie the award of credit to the amount of minutes spent in a classroom and provide flexibility from mandatory time-based attendance reporting requirements as well as required 180-day annual calendars and fixed amounts of daily instructional minutes per day.

2

## **Facilitate Higher Education Acceptance**

Develop a certification or other assurance that higher education will recognize for competency-based diplomas.

3

## **Transition to Proficiency-Based Diplomas**

Amend graduation requirements to require that diplomas must be competency-based and specifically preclude the use of seat-time for credit acquisition and redefine course and credit requirements as competencies.

4

## **Create Innovation Districts and Schools**

To empower innovative leaders who already have a clear vision for transition to a competency based system, states can authorize a competency-based pilot.

5

## **Encourage Anytime, Anywhere Learning**

Encourage learning out-of-school, after-school, and before school activities. Eliminate policies that impede a schools ability to award credit for extended learning opportunities.



# Innovation Programs

**Alabama: Innovation Zones**

**Arkansas: Schools of Innovation**

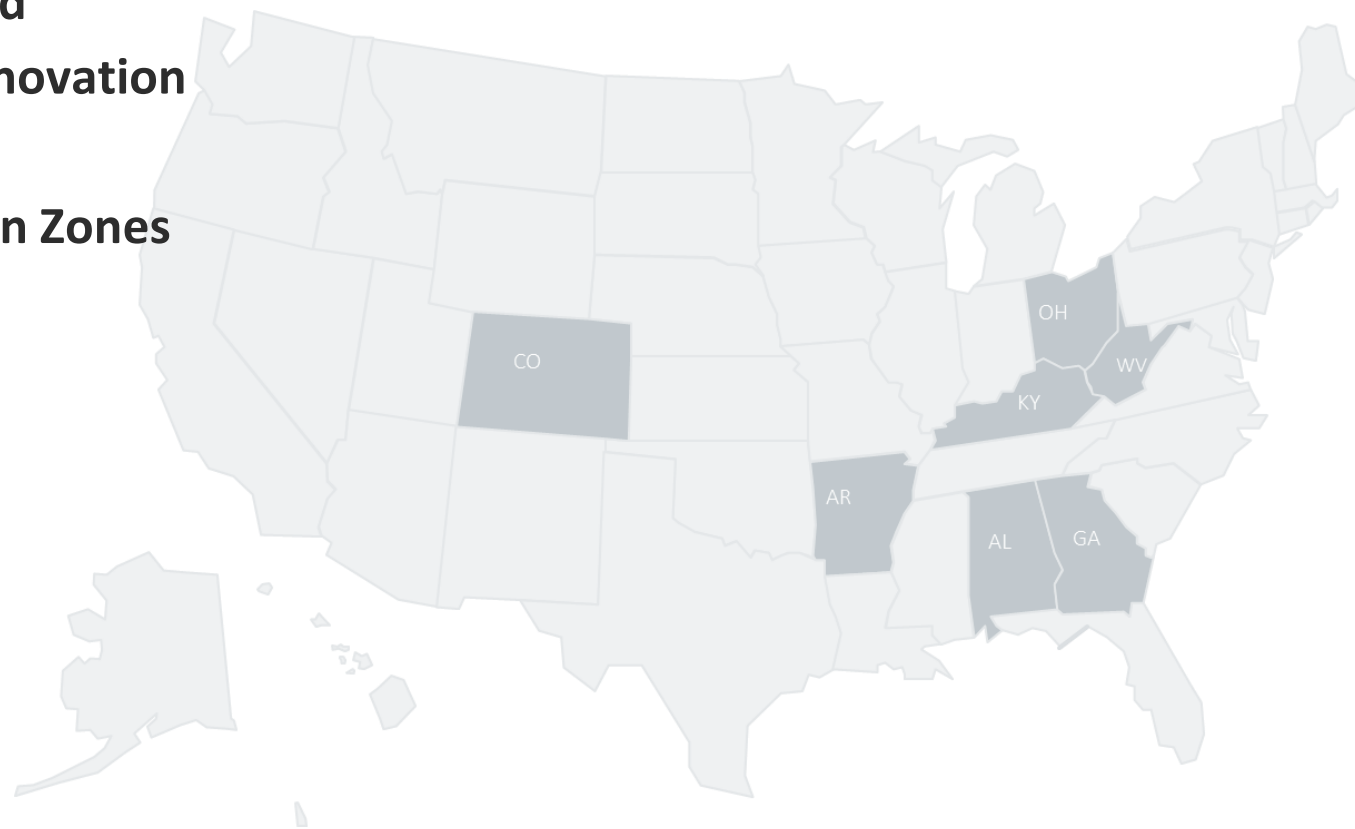
**Colorado: Schools of Innovation and Innovation Zones**

**Georgia: Innovation Fund**

**Kentucky: Districts of Innovation**

**Ohio: Straight A Fund**

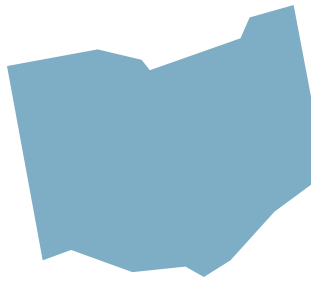
**West Virginia: Innovation Zones**





## Idaho : Mastery Based Education Incubators

- Conduct a statewide awareness campaign.
- Establish a committee of educators to identify roadblocks and possible solutions.
- Facilitate the planning and development of an incubator process and assessments of local education agencies to identify the initial cohort of 20 local education agencies to serve as incubators in fiscal year 2017.



## Ohio : Competency-Based Education Pilot

- Will allow for five selected applicants to plan and implement competency-based programs from SY2016 through SY2019.
- Funding will be awarded in an amount up to \$200,000 per academic year for selected applicants.

# Thank You !

Foundation for Excellence in Education  
P.O. Box 10691  
Tallahassee, FL 32302



(850) 391-4090



(786) 664-1794



[info@excelined.org](mailto:info@excelined.org)



Getting Smart

[gettingsmart.com](http://gettingsmart.com)

@tvanderark @getting\_smart





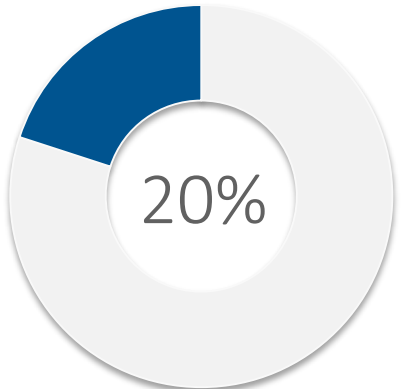


# Aligning a World-Class Education System with Competency Based Education

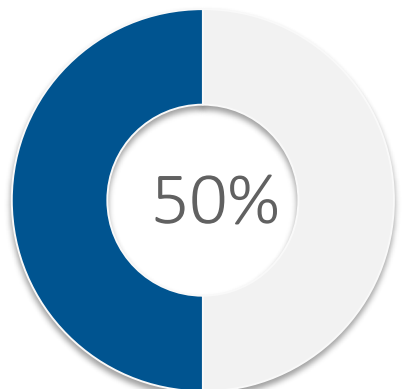
Tom Vander Ark, @Getting\_Smart @tvanderark  
Karla Phillips, @ExcelinEd, @azkarla



# Parents Trust Schools to Tell Them if Their Child is Succeeding, but Post-Graduation Numbers Tell a Different Story

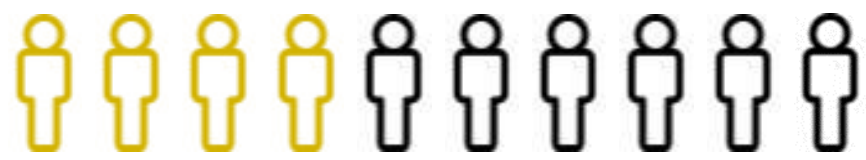


Of those entering four-year universities are placed in remedial classes.



Of students entering two-year colleges are placed in remedial classes.

Nearly 4 in 10 remedial students in community colleges never complete their remedial courses



Annually, \$7 billion spent on remedial coursework.

**1.7 million**  
beginning students start in remediation each year.

Sources: Complete College America and National Bureau of Economic Research

# Thank You !

Foundation for Excellence in Education  
P.O. Box 10691  
Tallahassee, FL 32302



(850) 391-4090



(786) 664-1794



[info@excelined.org](mailto:info@excelined.org)



Getting Smart

[gettingsmart.com](http://gettingsmart.com)

@tvanderark @getting\_smart

