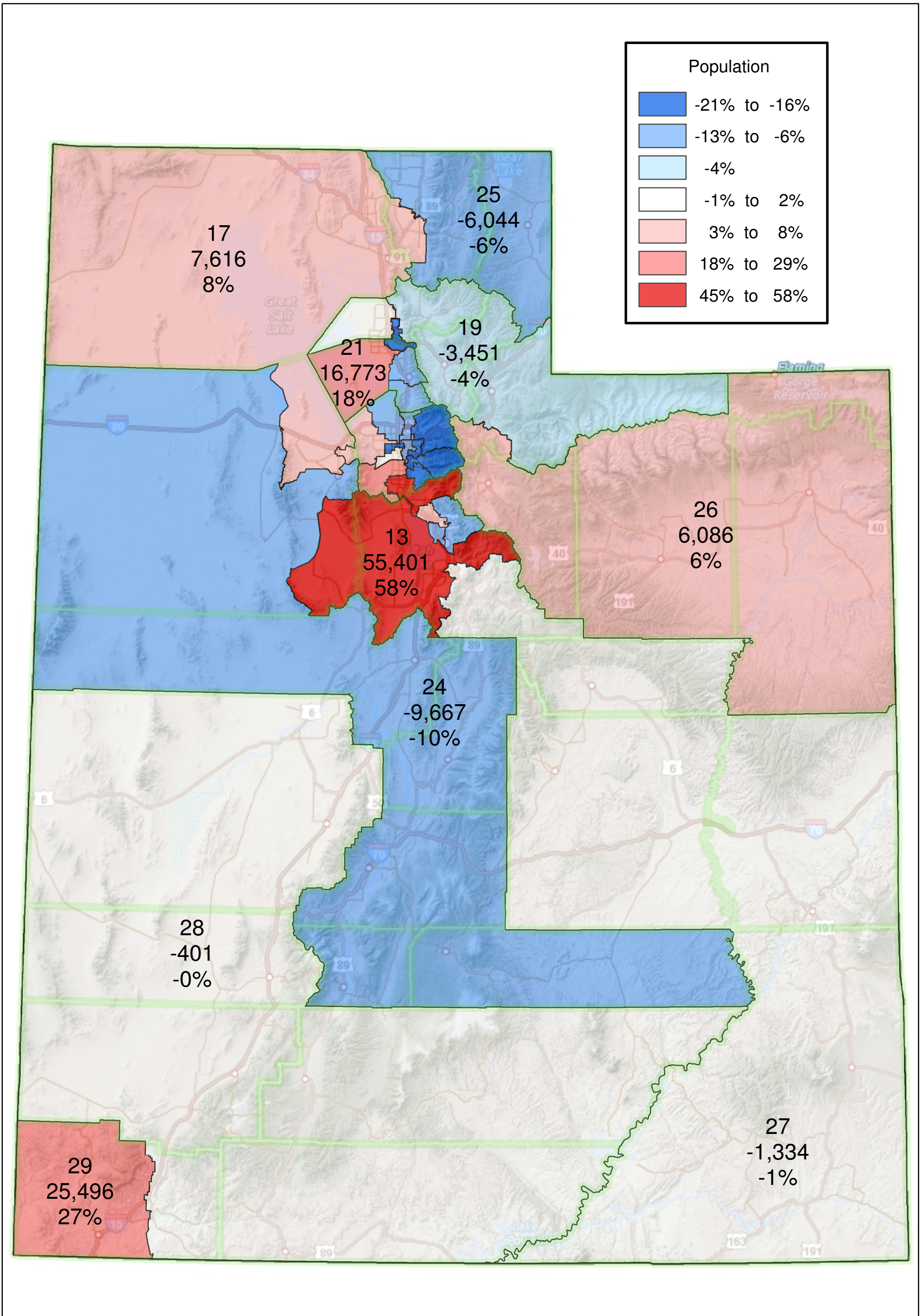


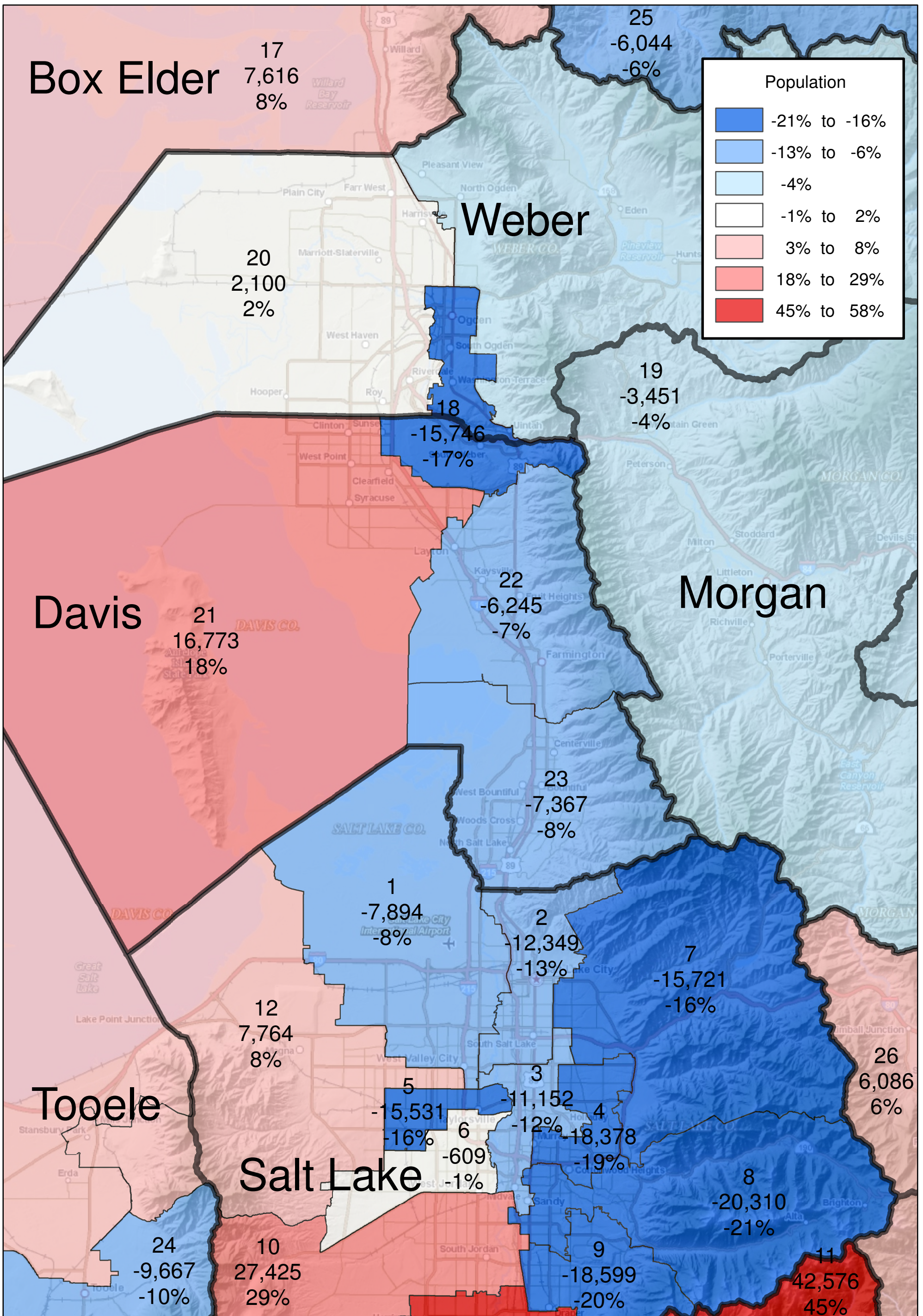
2001 Senate Districts w 2010 Population Variance from Ideal

(Ideal pop 95,306)



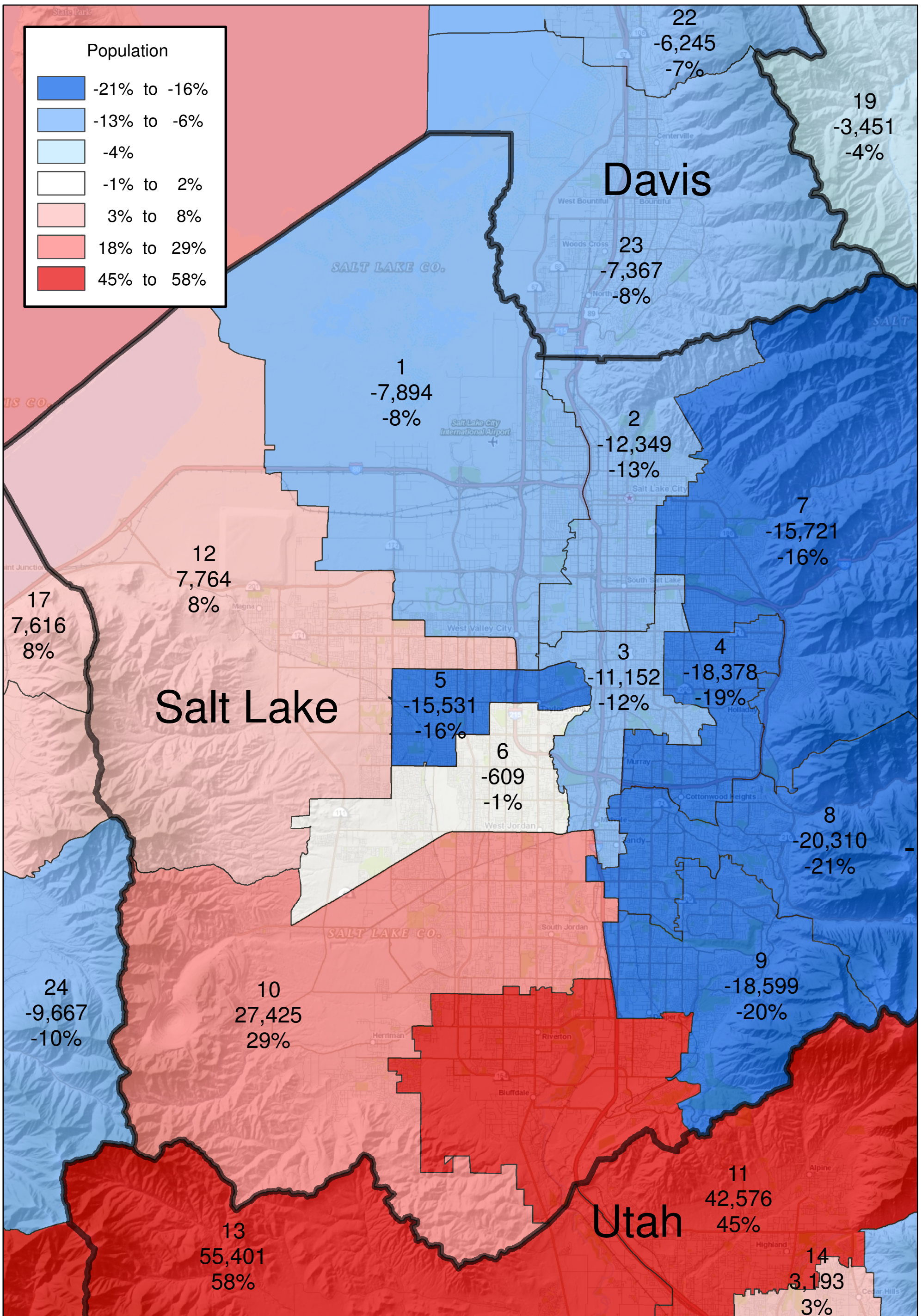
2001 Senate Districts w 2010 Population Variance from Ideal

(Ideal pop 95,306)



2001 Senate Districts w 2010 Population Variance from Ideal

(Ideal pop 95,306)



2001 Senate Districts w 2010 Population Variance from Ideal

(Ideal pop 95,306)

