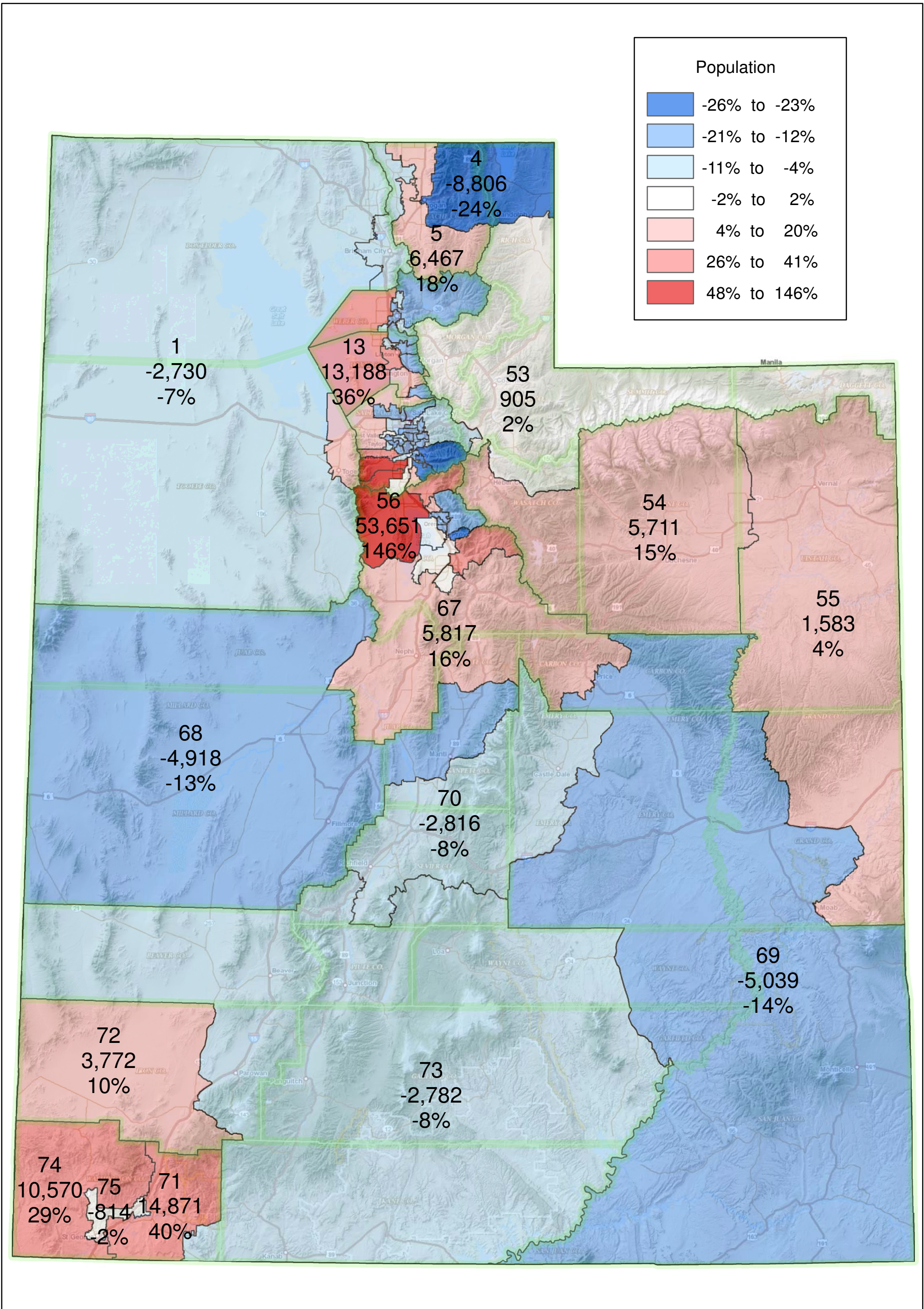
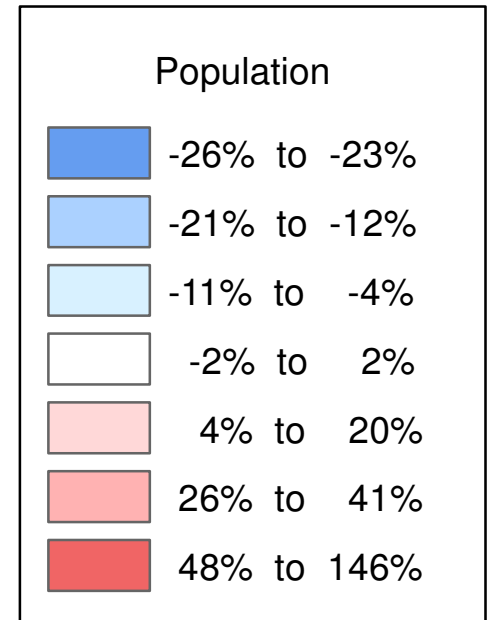


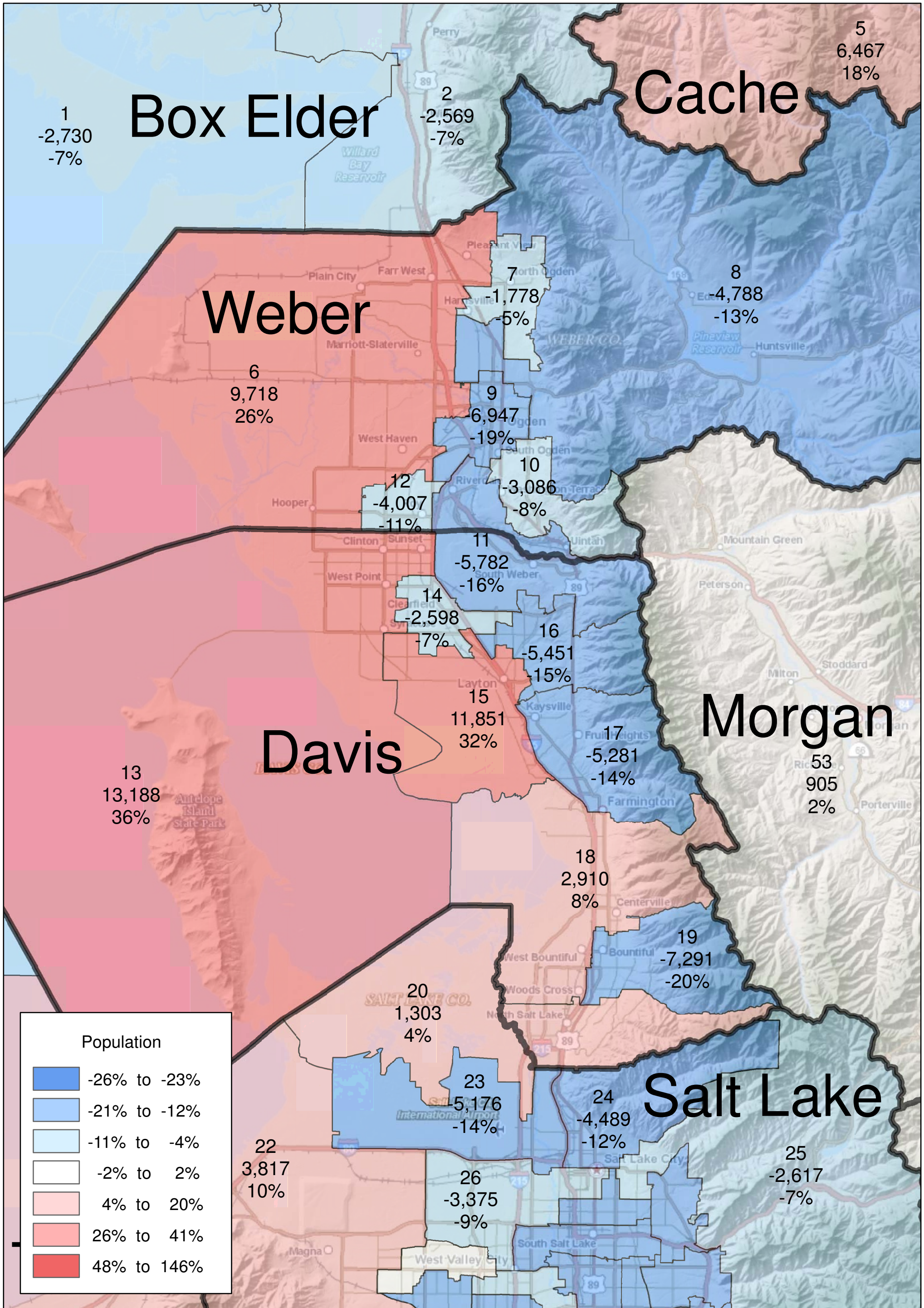
2001 House Districts w 2010 Population Variance from Ideal

(Ideal pop 36,852)



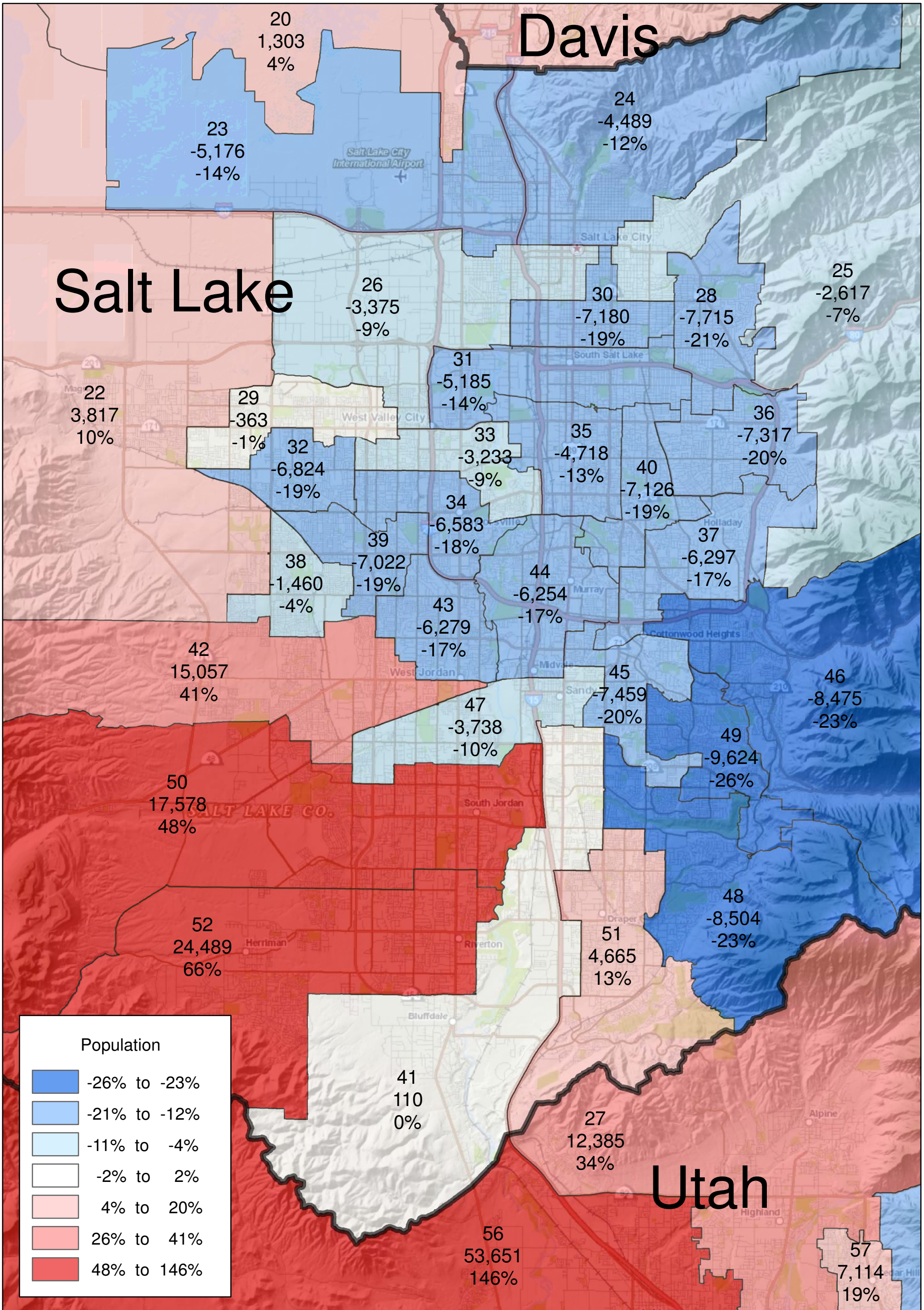
2001 House Districts w 2010 Population Variance from Ideal

(Ideal pop 36,852)



2001 House Districts w 2010 Population Variance from Ideal

(Ideal pop 36,852)



2001 House Districts w 2010 Population Variance from Ideal

(Ideal pop 36,852)

