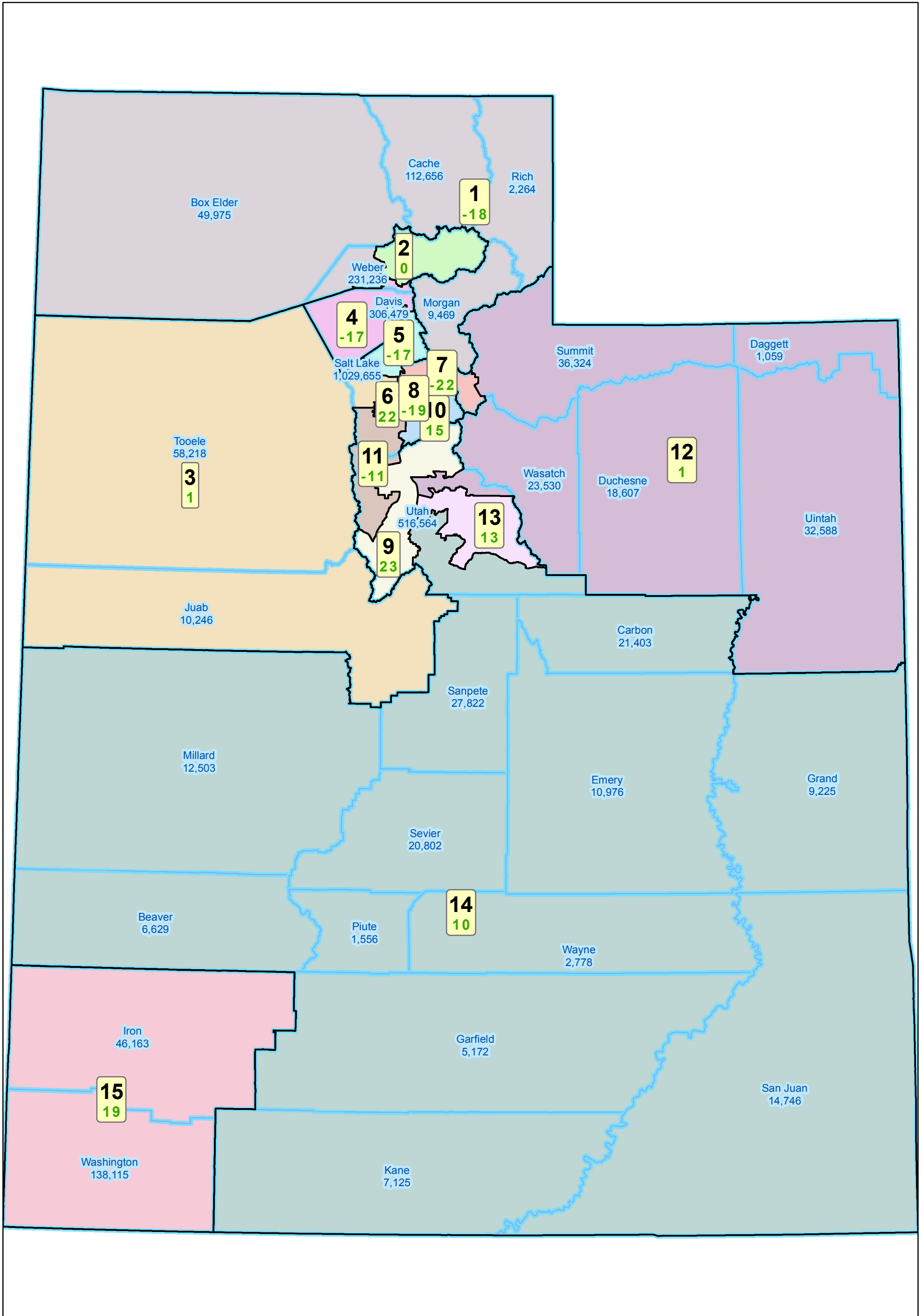


School Board: Sumsion Low Deviation

September 23, 2011

Statewide View

Note: The number below the district number is the deviation from the ideal population of 184,259.

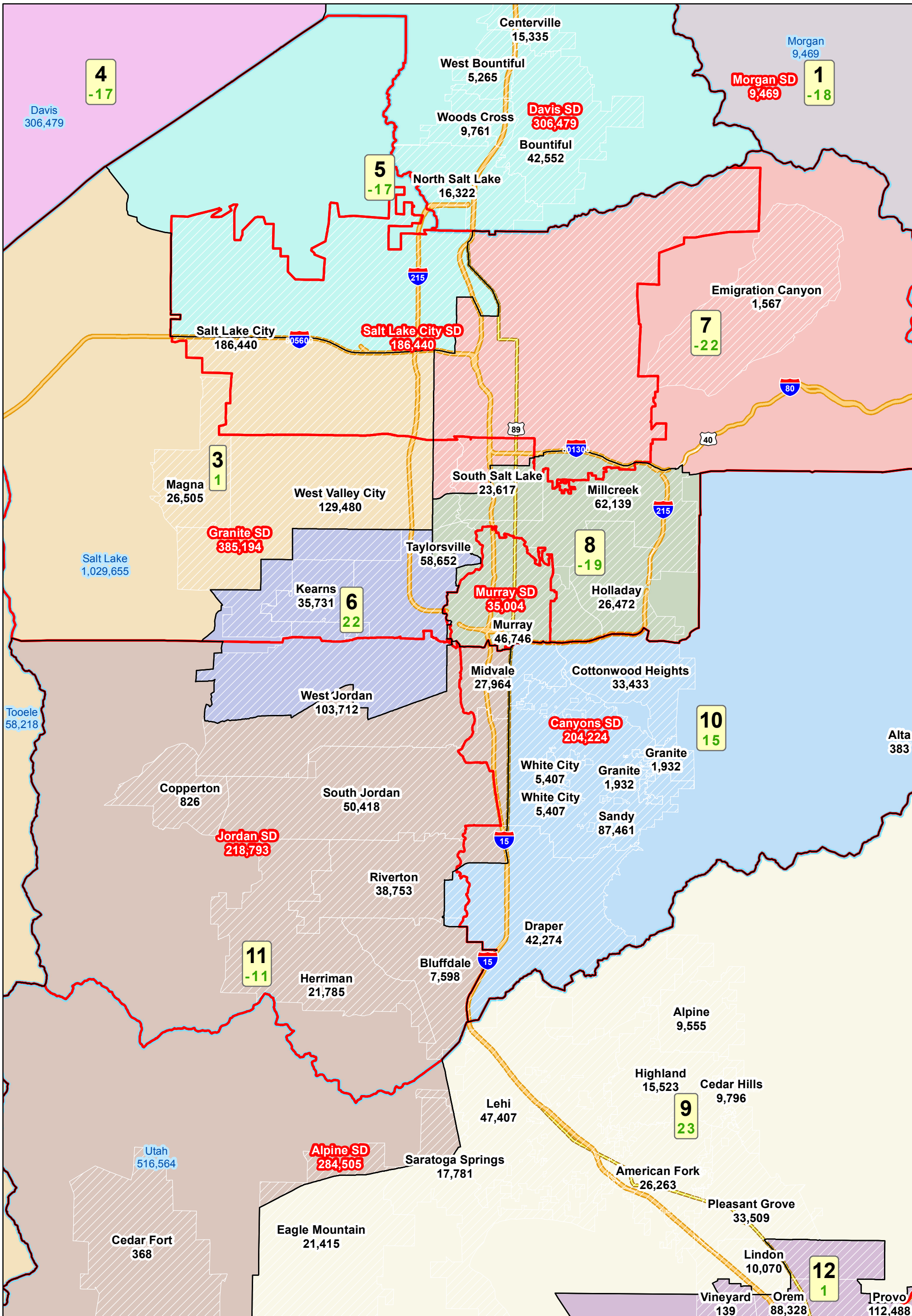


School Board: Sumsion Low Deviation

September 23, 2011

Salt Lake County

Note: The number below the district number is the deviation from the ideal population of 184,259.

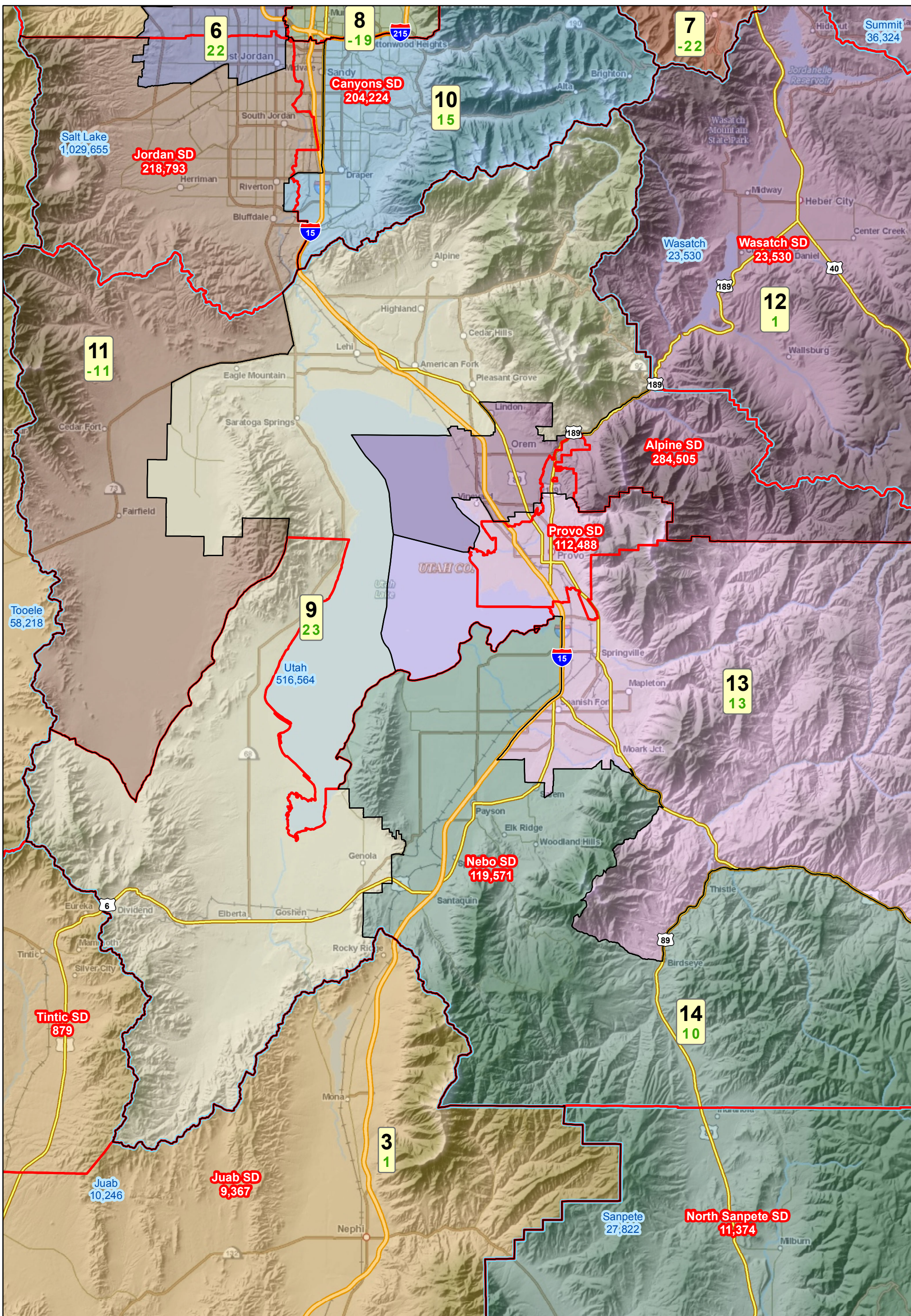


School Board: Sumsion Low Deviation

September 23, 2011

Utah County

Note: The number below the district number is the deviation from the ideal population of 184,259.

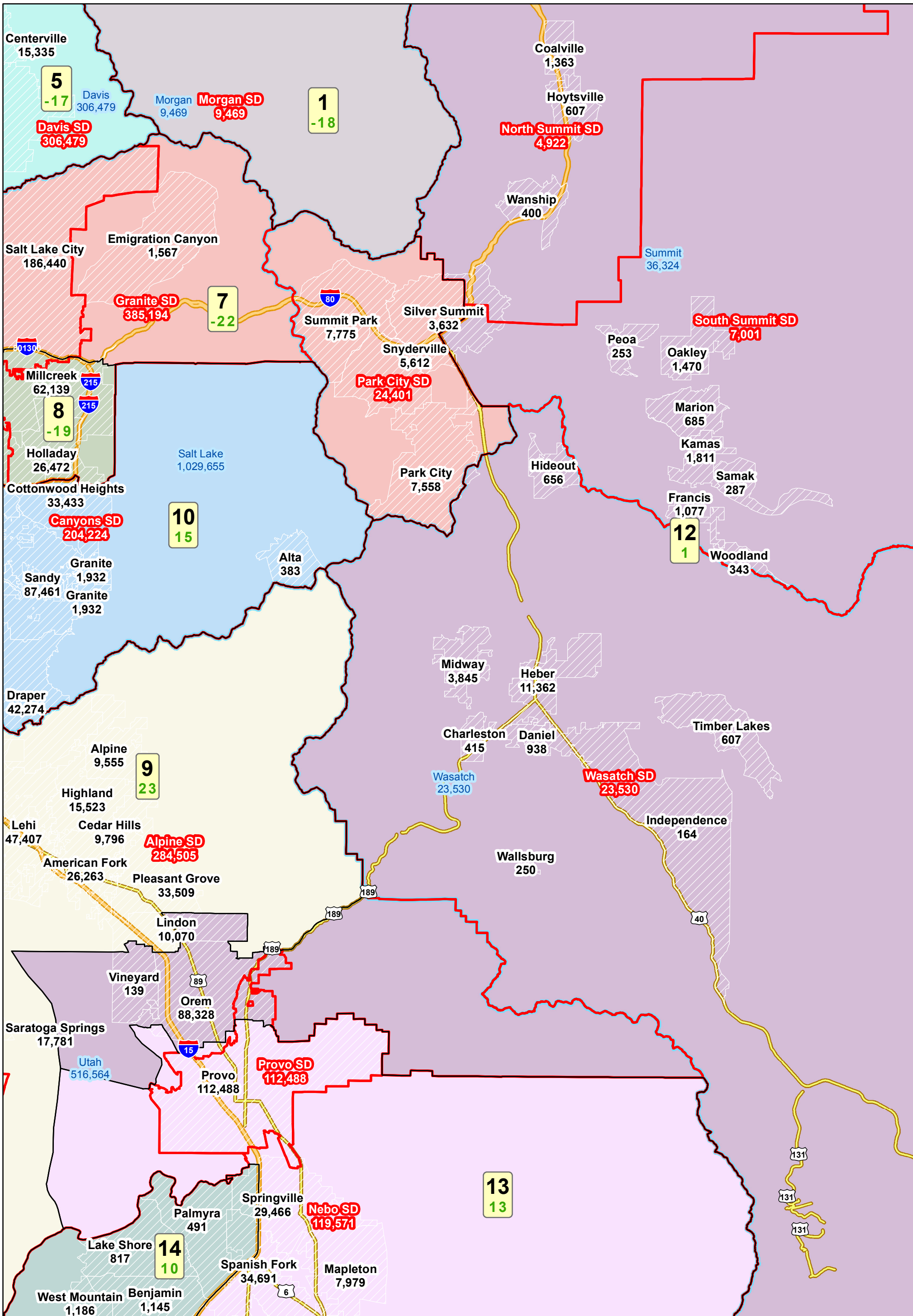


School Board: Sumsion Low Deviation

September 23, 2011

Wasatch Back

Note: The number below the district number is the deviation from the ideal population of 184,259.



School Board: Sumsion Low Deviation

September 23, 2011

Weber and Davis Counties

Note: The number below the district number is the deviation from the ideal population of 184,259.

