

A child is abused every 28 hours in Cache County. These are not numbers; these are ***Our Children!***

Esterlee Molyneux
Executive Director



What is the Child & Family Support Center?

Since 1982, the Child & Family Support Center [CFSC] has served tens of thousands of children and families throughout the Cache County community. With a mission of ***Strengthening Families and Protecting Children***, the CFSC offers:

- 24-Hour Crisis Nursery
- 24- Hour Respite Nursery
- 24-Hour Crisis Hotline
- Child Abuse Shelter
- Educational programming for parents (parenting, stepfamily, peer parenting, first time parents, incarcerated parents, etc.)
- Courses for children (anger management, body safety, social skills, impulse control, stress management, etc.)
- Therapeutic services for victims

In October, 2013 the CFSC opened a second location in Hyrum, Utah making it the first agency providing services at the south end of the community. This center will provide direct services in English and Spanish to children and families. The focus is to strengthen families while preventing child abuse.

Funding Request: \$75,000

As we move forward in building this important community resource, the CFSC is humbly asking for a one-time legislative request of **\$75,000** to complete the purchase of the CFSC-South building and for associated costs. To date over \$137,000 has been obtained toward this project.

Retire Mortgage	\$50,000
Crisis Nursery Building Addition	\$25,000
Total funds requested:	\$75,000

**We have a contractor who has solicited an army of subcontractors to donate their time/services towards making this service a reality! This is a genuine effort by the community to support our community.*

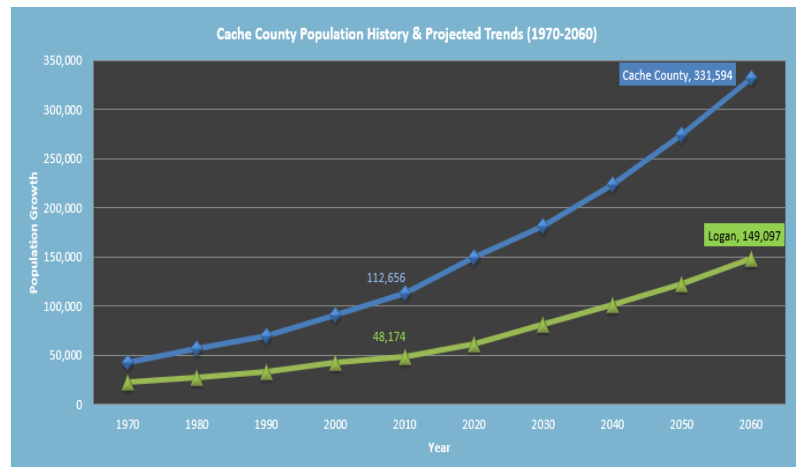
CFSC-South Building. Dedicated October 21, 2013



The Logan, Utah facility has surpassed capacity. These astonishing growth rates at the Logan facility combined with population increases in the County instigated a community wide needs assessment in 2011 with the goal of examining needs for supportive services at the south end of the community.

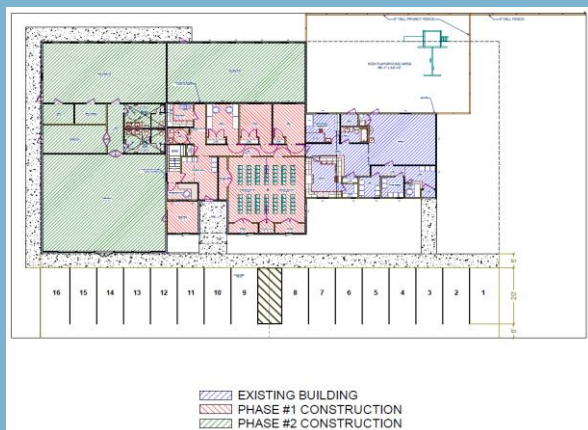
CFSC Growth 2000-2013

Service	2000	2010	2013	Percentage
Adult Education	82 participants	527 participants	960 participants	1171%
Children's Services	255 participants	4,437 participants	5,929 participants	2325%
Therapeutic Intervention	119 recipients	627 recipients	843 recipients	3613%
Crisis/Respite Nursery	1,183 Visits	3,788 Visits	4,294 Visits	363%



MEASUREMENTS/OUTCOMES

- 1) The mortgage on the facility will be paid in full allowing acquired resources to serve children and families.
- 2) The Child & Family Support Center will build a 1,837 square foot addition to the facility in Hyrum to serve as a crisis/respice nursery.



With the opening of the CFSC South Cache Center, we are able to provide new services to the south end of Cache Valley that has historically ***been unavailable.***

Three weeks after opening the South Cache Center, classes were filled to ***beyond capacity.*** There are more parents and children enrolled than we have room for. ***Every chair in the building is filled!!!***

We will now be able to serve ***highly at-risk populations*** which have never accessed CFSC services. This includes the largest population of ***Burmese refugees*** in the valley.

SUPPORTING DCFS

The Child & Family Support Center has enjoyed a mutually beneficial three decade year partnership with our local DCFS.

- Logan DCFS has investigated over **5,400 allegations of child abuse** and neglect from 2007-2013.
- Despite the growing population in Cache County, **child abuse rates have dropped** due to the prevention services offered at the Child & Family Support Center.
- The majority of services that DCFS caseworkers refer families to are provided at **low to no cost.**
- DCFS caseworkers will now have **bilingual services** to refer families to.
- The Child & Family Support Center plans to be a continued **resource to caseworkers** both in Logan (largest city) as well as offering **a crisis/respice nursery in the rural areas of our community.**

Classes and therapy workshops have been taught in English and Spanish.

Hyrum and the southernmost part of Cache Valley are the ***fastest growing*** population areas in the county.



The Starfish Story

To show our vision in serving our community, the CFSC has adopted the Starfish Story. This story incorporates the CFSC's mission of ***Strengthening Families and Protecting Children*** serving every individual we come across, knowing that these services not only good, but in many cases life changing! Please support our effort and become a "starfish thrower" which simply means to **make a difference for that one.**

For additional information contact Esterlee Molyneux, Executive Director, at 435.752.8880 or at esterlee@childandfamilysupportcenter.org. Visit us at www.ChildandFamilySupportCenter.org or on our facebook page.