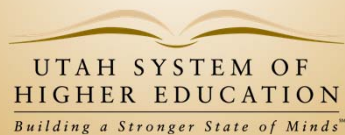




## Meeting Demand for Workers through Career and Technical Education

Blair Carruth - Utah System of Higher Education  
Rick Bouillon - Salt Lake Community College  
Cameron Martin- Utah Valley University



## Engagement with Employers

---

- Institutional mission fulfillment
- Program advisory committees
- Institutional workforce development units
- Economic development efforts
- Consulting assignments
- Grants and contracts
- Utah Cluster Acceleration Partnership
- Linkage with trade and industry groups
- Linkage with DWS and analysis of workforce data

## CTE within USHE

---

- Over 70 new certificate programs have been developed in the last three years
- Development of programming within regional CTE councils to include coordination among USOE, UCAT, and USHE
- New programs informed by employer input and labor market data
- Nearly 5,000 CTE credentials were awarded during FY13
- Student participation in CTE courses totaled over 11 million membership hours in FY13

## Presentations

---

- Salt Lake Community College
- Utah Valley University

## Salt Lake Community College Core Themes

The image displays four vertical banners, each representing a core theme. Each banner has a blue background with a white icon in a yellow circle at the top. The themes are: Transfer Education (icon: three arrows pointing up, down, and right), Access & Success (icon: a key), Workforce Education (icon: two interlocking gears), and Community Engagement (icon: a city skyline). The banners for Workforce Education and Community Engagement are enclosed in a yellow rectangular box. To the right of this box, the word "Focus" is written in a large, bold, black font, with a yellow L-shaped arrow pointing from the word towards the highlighted banners. At the bottom right of the graphic area is the Salt Lake Community College logo, which consists of the text "Salt Lake Community College" next to a stylized blue and yellow circular emblem.

## Workforce Education C.T.E. - Career and Technical Education

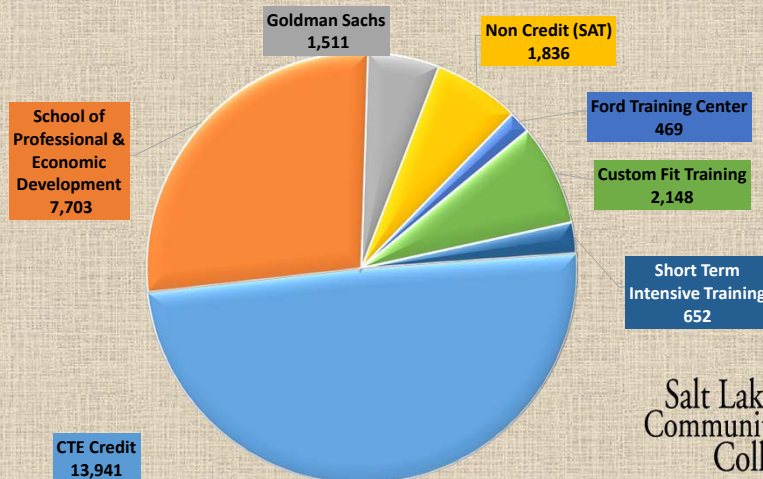


Career and Technical Education (C.T.E.) are specifically designed to:

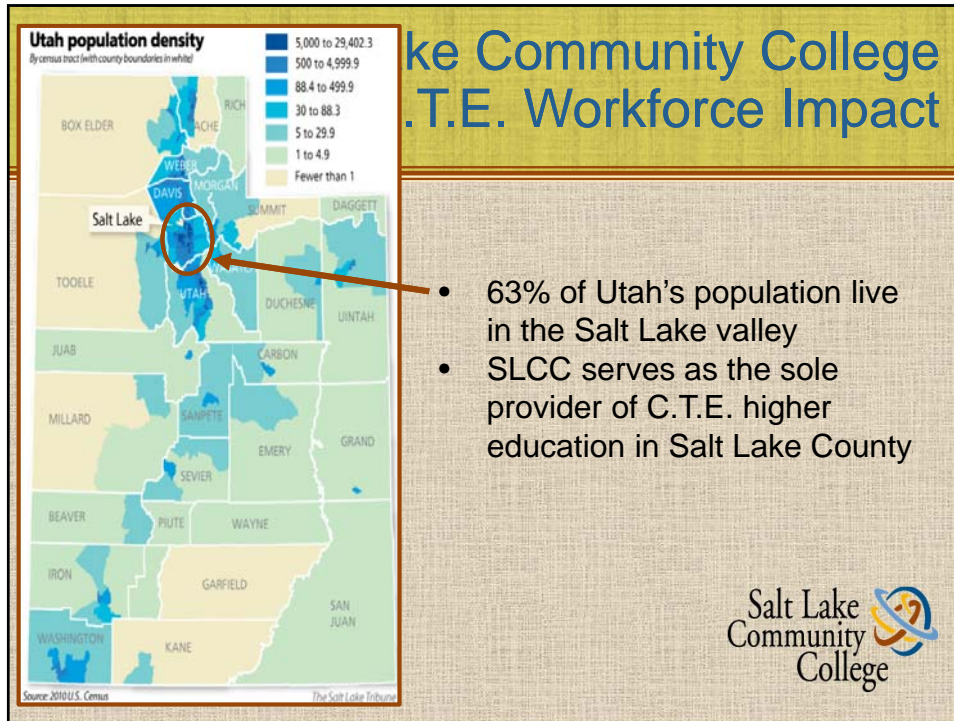
- Prepare students to enter the workforce immediately
- Provides hands-on skills
- Offer pathways to earning a degree



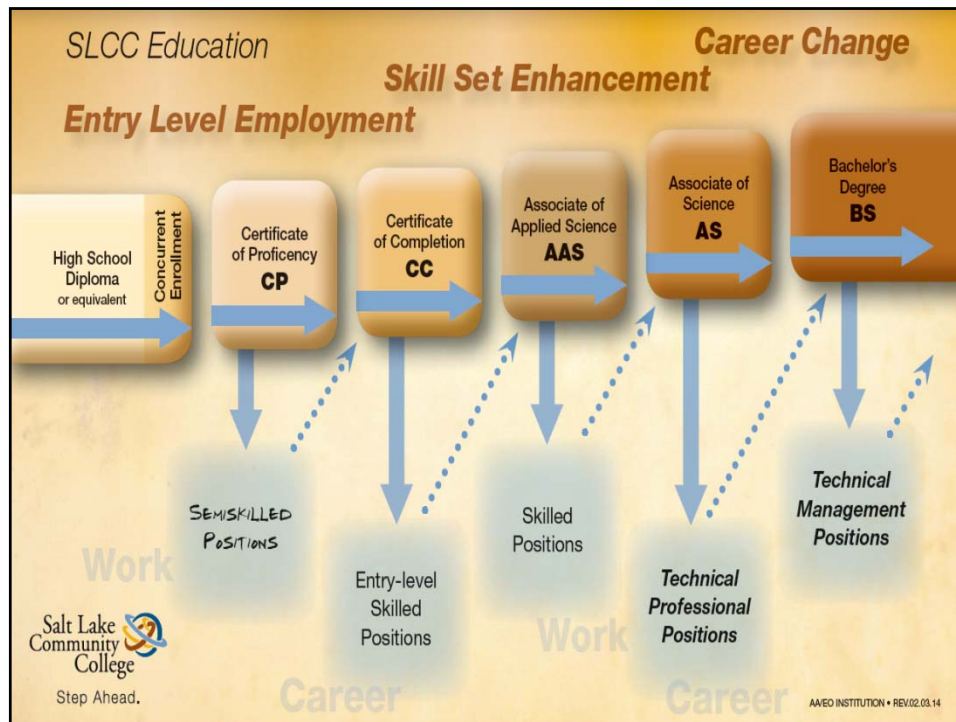
## SLCC Served 28,260 Students Seeking Career and Technical Education in 2012-2013







- ## C.T.E. Programs at SLCC
- Accounting
  - Architectural Technology
  - Automotive Technician
  - Aviation Technology/Pilot
  - Biotechnology
  - Bio-manufacturing
  - Business Mgmt.
  - Engineering Design/Drafting Tech
  - Computer Info Systems
  - Composites
  - Computer Science
  - Criminal Justice
  - Culinary Arts
  - Dental Hygiene
  - Diesel Systems
  - Engineering Design
  - Energy Management
  - Fashion
  - Film Production
  - Finance
  - Interior Design
  - Mortuary Science
  - Nursing
  - Occupational Therapy Assistant
  - Paralegal
  - Radiologic Technology
  - Surveying Technology
  - Surveying
  - Visual Art & Design
  - Welding
-



## C.T.E. Degrees and Certificates Developed in the Past Two Academic Years

Accounting Advanced	Radiography	Software Engineering
Accounting Essentials	Non-Destructive Testing -	Web Programming and
Collision, Maintenance and Light	Ultrasonics	Development
Repair	Surveying & Geomatics (Name	Windows Systems Administration
Business Administration *	Change)	Homeland Security/Emergency
Business Basics *	Graphic Communications	Management
Management Essentials *	Automotive Maintenance and	Diesel Systems Technology
Small Business Management *	Light Repair	Electronics Engineering
Economics Essentials *	Motorcycle and Outdoor Power	Technology
Microscopy	Equipment Technology	Automation and Instrumentation
Nanotechnology	Computer Sciences & Information	Technician (Non-Credit)
Finance Essentials *	Systems	Technical Transfer
Financial Management *	Business and Personal Computing	Welding Technology
Financial Services *	Computer Science Fundamentals	
Investments and Trading *	Database Information Systems	
Geospatial Technology	Linux System Administration	
Health Information Technology	Network and Cyber Security	
Advanced Marketing Essentials *	Network and System	
Non-Destructive Testing - Eddy	Administration	
Current	Network Routing and Switching	
Non-Destructive Testing -	Software Development	

\* Pending Approvals as of July 2014

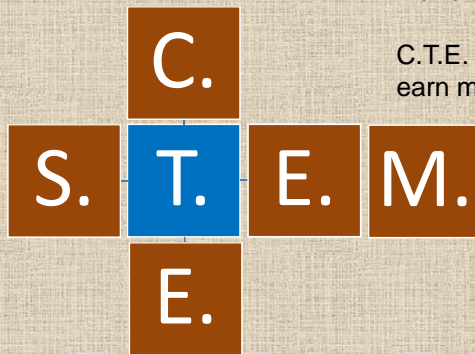
Salt Lake Community College



## Technology is the link between C.T.E. and S.T.E.M.

30% of today's S.T.E.M. intensive jobs are in occupations such as installation, maintenance and repair, construction, manufacturing, and health care support.

C.T.E. is technology. IT employees can earn more than 2x the national average, and IT is one of the best-paying Career Clusters for those with middle-level skills.



**UVU-CTE**

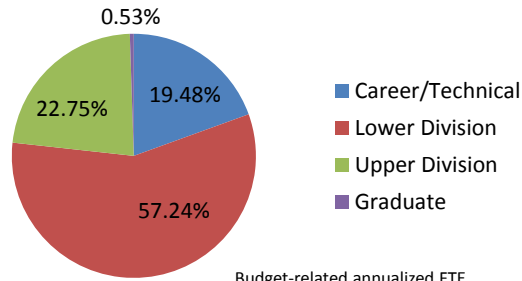
Institutional Workforce Alignment  
July 16, 2014

UTAH VALLEY  
**UVU**  
UNIVERSITY

## Unique Educational Mission

- ❖ UVU continues to be a national leader in providing seamless transition
- ❖ UVU's broad educational degrees serves a vital public interest
- ❖ CTE courses account for nearly 20% of UVU's enrollment
- ❖ Few have UVU's ability to meet broad range of student interests on such a large and balanced scale

UVU 2012-13  
Enrollment by Level of Instruction



Budget-related annualized FTE



## Monitoring Employer Demand

### Occupational Breakdown of Ads for Job Openings by Metro Area

Top Ten from First Quarter 2013

Source: Brookings' analysis of data supplied by Burning Glass

Provo/Orem		Salt Lake City		Ogden/Clearfield	
Occupation	# of Ads	Occupation	# of Ads	Occupation	# of Ads
Computer and mathematical science	209	Office and administrative support	897	Sales and related	218
Office and administrative support	194	Computer and mathematical science	843	Office and administrative support	194
Sales and related	181	Sales and related	820	Healthcare practitioner and technical	147
Healthcare practitioner and technical	99	Healthcare practitioner and technical	646	Healthcare support	101
Business and financial operations	90	Management	544	Computer and mathematical science	92
Healthcare support	89	Business and financial operations	464	Management	67
Management	71	Healthcare support	291	Business and financial operations	65
Food preparation and serving related	60	Installation, maintenance and repair	274	Transportation and material moving	55
Transportation and material moving	53	Architecture and engineering	220	Architecture and engineering	48
Building and ground cleaning and maintenance	36	Food preparation and serving related	217	Installation, maintenance and repair	46





# Career Pathways

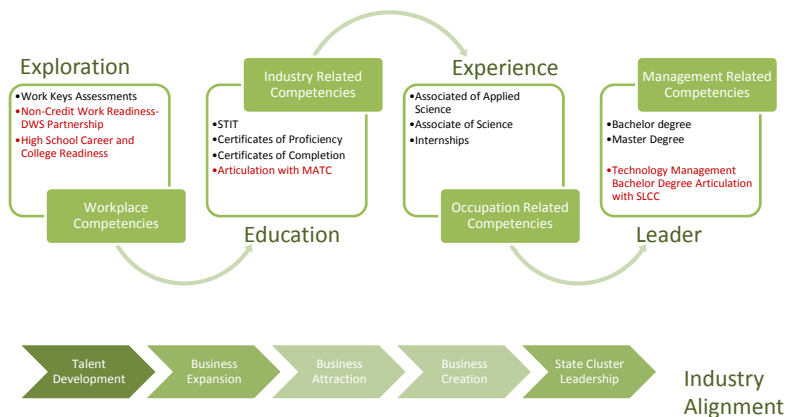
- ❖ Stackable credentials
- ❖ Transferability
- ❖ K-16 Alliance Support
- ❖ Industry Validation
- ❖ Collaboration with UCAT
- ❖ “An effective strategy to meet the goals of a well-trained workforce”

*Executive Director, Jon Pierpont  
Department of Workforce Services*



Full Pathways Report  
[http://www.uvu.edu/president/docs/bes\\_pathways.pdf](http://www.uvu.edu/president/docs/bes_pathways.pdf)

# Industry Alignment



## Economic Impact

- ❖ Every federal CTE program tax dollar invested in UVU-CTE = **return of \$42.81**
- ❖ Every state CTE program tax dollar invested in UVU-CTE = **return of \$38.35**
- ❖ Total CTE output economic impact to:
  - **state \$63.3 million**
  - **region \$54.4 million**
- ❖ Total tax (federal, state, local) impact: **\$8.8 million**

Full Economic Impact Report <http://www.uvu.edu/iri/>



