

GROUP
CAREER
SKILLS
TRAINING
STRENGTH
MANAGEMENT
COMMITMENT
MANAGER
INNOVATION
MOTIVATION
TEAM
WORKFORCE
CONDUCT
ACCREDITED
STUDENT-FOCUSED
BUSINESS
SOLUTION
LEADERSHIP
COLLABORATION
MEANINGFUL
EMPLOYER-DRIVEN
ABILITY
RESPECT
GOAL
VISION
COMMERCE
PEOPLE
COACHING
DISCIPLINE
ECONOMY
TEAMWORK
SUCCESS
edUCATION
COMPETENCE
COMPLETION



UTAH COLLEGE OF APPLIED TECHNOLOGY

ANNUAL REPORT OCTOBER 2016

GOVERNOR'S MESSAGE



Utah's strong commitment to education as the foundation for a sound economy is exemplified by the creation and cultivation of the Utah College of Applied Technology (UCAT). Officially created in 2001, the system of Applied Technology Colleges has gone through several structural changes while continuing to educate, train and prepare a skilled labor force in our state. UCAT is positioned among the best systems in the country to administer technical education that meets market demands.

Playing a key role in the Utah economic engine, UCAT's eight regional Applied Technology Colleges served over 50,000 people in Fiscal Year 2016 through education and/or training programs, including Custom Fit. This important work engaged hundreds of employers and business leaders who served on Employer Advisory Committees or received Custom Fit training. By collaborating with the business community, UCAT colleges are able to meet the immediate needs of industry and respond with meaningful and relevant training.

With a student-focused and employer-driven approach to education and training, UCAT is fulfilling its mission to *"meet the needs of Utah's employers for technically-skilled workers and to promote economic development by providing market-driven technical education to secondary and adult students."*

A handwritten signature in orange ink that reads "Gary R. Herbert". The signature is fluid and cursive, written in a professional style.

Gary R. Herbert, Governor
State of Utah



UTAH COLLEGE
of
APPLIED TECHNOLOGY

TABLE OF CONTENTS

UCAT Welcome	3	Student Highlights	12
Membership Hours	7	Employer Partnerships.....	13
Student Headcount	8	Custom Fit Program	15
Training/Certificates Offered.....	9	UCAT Colleges	17-34
COE Accreditation	11	Appendix.....	35

THE MISSION

The mission of the Utah College of Applied Technology (UCAT) is to meet the needs of Utah’s employers for technically-skilled workers and to promote local and statewide economic development by providing market-driven technical education to secondary and adult students.

THE UCAT TEAM



As the Chief Operating Officer of Xactware Solutions, an international leader in software innovations and data analysis based in Lehi, Utah, I am honored to serve as Chairman of the Utah College of Applied Technology Board of Trustees. The Board of Trustees oversees the eight Applied Technology Colleges within the UCAT system. One of our key objectives as a Board is to ensure that UCAT maintains its commitment to providing market-driven education and training.

This employer-driven strategy includes partnerships with 1,645 companies based throughout Utah through the Custom Fit program, and hundreds of individuals who form our Employer Advisory Committees.¹ These partnerships help UCAT create relevant curricula and guarantee that the education and training provided is applicable to the needs of the employer community. This report highlights the collective work of the students, staff, faculty, and community leaders who make the UCAT system one of the finest of its kind.

A handwritten signature in orange ink that reads "Jim Evans". The signature is fluid and cursive, with a long horizontal stroke at the end.

Jim Evans, Chair
Utah College of Applied Technology Board of Trustees



In Fiscal Year 2016, as in past years, UCAT students were at the core of their own success and that of the colleges they attended. Over 50,000 people took advantage of the fantastic training offered at our colleges, ranging from nationally accredited certificate programs to Custom Fit courses through their employers. With 8,150 accredited certificates awarded to 7,079 students, UCAT Colleges graduated the largest number of students since the Applied Technology Colleges (ATCs) in Utah were formed under one system.

At UCAT, we are privileged to be part of a diversified and expanding economy which provides a direct pipeline to meaningful employment for our students. Stories like those of the UCAT Student of the Year, Shawn Owens (see page 12) from the Ogden-Weber ATC, and Crystal Pyne, a Program Administrator at the Southwest ATC who supports students with special needs, are inspiring to us all.

Thank you for supporting UCAT and all of its students, staff and community and business volunteers.

A handwritten signature in orange ink that reads "Jared A. Haines". The signature is fluid and cursive, with a long horizontal stroke at the end.

Jared Haines, Acting Commissioner
Utah College of Applied Technology



Top to bottom, left to right: Bridgerland, Southwest, Mountainland, Davis, Dixie, Ogden-Weber, Tooele, Uintah Basin.

UCAT Board of Trustees

Jim T. Evans, Chair

Mountainland ATC

Steven R. Moore, Vice Chair

Ogden-Weber ATC

Scott L. Theurer

Bridgerland ATC

Michael E. Jensen

Davis ATC

Stephen W. Wade

Dixie ATC

Jerry Taylor

Southwest ATC

Dave Ulery

Tooele ATC

Mike Angus

Uintah Basin ATC

Brian C. Florang

Snow College

W. Tim Miller

Salt Lake Community College

Jim Olsen

Business/Industry Employers

Dale M. Cox

Union Apprenticeships

Brad Tanner

Non-Union Apprenticeships

Val Hale

*Governor's Office of Economic
Development*

Barbara Corry

State Board of Education

Jessie B. Anderson

State Board of Regents

STUDENT—FOCUSED

38,985 STUDENTS
ENROLLED¹

EMPLOYER—DRIVEN

1,083 EMPLOYER
PARTNERS²

WE'RE MEETING WORKFORCE DEMAND

BY TRAINING JOB SEEKERS FOR THE FASTEST GROWING INDUSTRIES IN UTAH

¹ Appendix B, HEADCOUNT

² Appendix H, EMPLOYER ADVISORY

EXCEEDING EXPECTATIONS

The eight colleges that make up the Utah College of Applied Technology maintain a commitment to excellence, and in Fiscal Year 2016 educated 38,985 students.¹ UCAT's Custom Fit program also directly helped 1,645 companies train 15,297 employees.²

Through certificate programs, continuing occupational education, Custom Fit training and free tuition for high school students, UCAT readies individuals to meet Utah's fast-paced market demands. In addition, UCAT colleges routinely exceed accreditation placement standards and offer programs in 9 of the 10 fastest growing job sectors in Utah.³

WE'RE
SERVING **9** **OUT OF** **10** OF THE FASTEST-GROWING
JOB SECTORS
IN UTAH

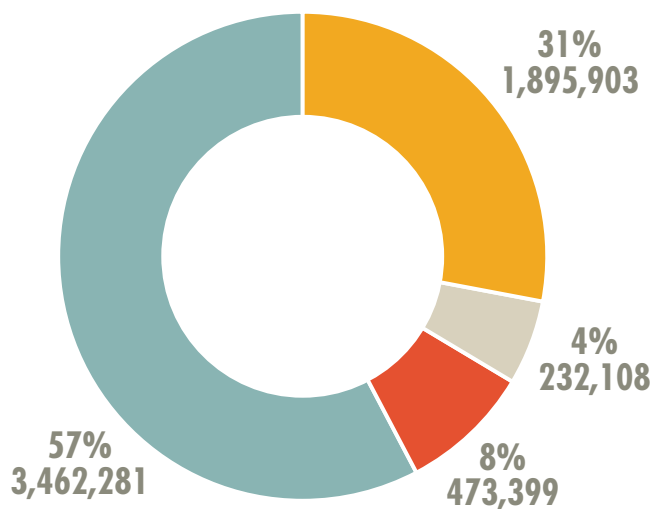
- ✓ Office/Administrative Support
- ✓ Healthcare
- ✓ Production/Manufacturing
- ✓ Transportation
- ✓ Sales
- ✓ Computer/IT
- ✓ Business/Financial
- ✓ Installation/Maintenance
- ✓ Food Preparation/Serving

¹ Appendix B, HEADCOUNT

² Pgs. 15-16 CUSTOM FIT

³ Appendix G, DWS JOB DATA

MEMBERSHIP HOURS



- Certificate-Seeking
- Continuing Occupational Education
- Secondary (High School)
- Other Post-Secondary



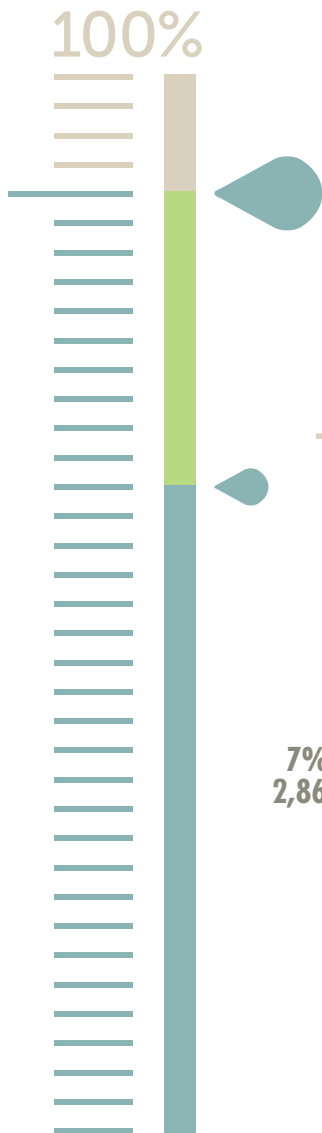
8,150

CERTIFICATES AWARDED



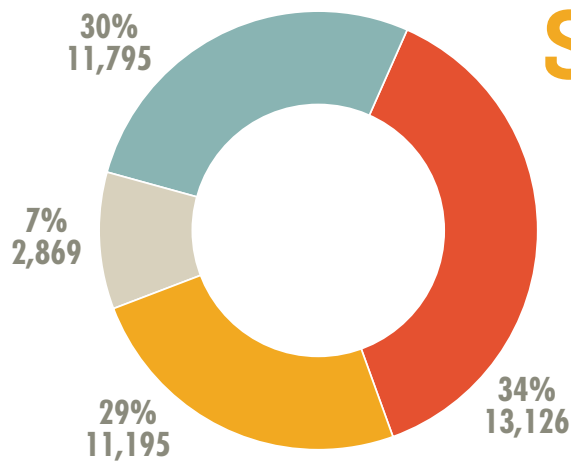
TO 7,079

STUDENTS



80-95% PLACEMENT RATE

The Council on Occupational Education, which accredits each of UCAT's 8 colleges, requires all certificate programs to place at least 70% of graduates in related employment, continued education, or the military. Statewide, UCAT programs routinely exceed this standard, generally placing between 80 and 95% of graduates.¹



STUDENT HEADCOUNT

- Certificate-Seeking
- Continuing Occupational Education
- Secondary (High School)
- Other Post-Secondary

¹ Appendix F, PLACEMENT RATES

TRAINING & CERTIFICATES OFFERED

BUSINESS TECHNOLOGY

Accounting Technician
Business Technology
Real Estate Pre-Licensure
Retail Sales & Fashion
Merchandising

COMPUTER TECHNOLOGY

Information Technology
Media/Design Technology
Programming/Software Dev
Web & Mobile Development

CONSTRUCTION TRADES

Cabinetmaking
Carpentry
Electrician Apprentice
Heating, Ventilation & AC Service
Plumbing Apprentice
Sign Fabricator Apprentice
Heavy Equipment Operator

HEALTH CARE PROFESSIONS

Certified Nursing Assistant/
Medication Aide
Dental Assisting
Dental Office
Emergency Medical Technician

HEALTH CARE PROFESSIONS CONTINUED

Medical Assisting
Medical Coding
Medical Office Admin/Health
Information
Medical Office Laboratory
Technician
Paramedic
Pharmacy Technician
Phlebotomist
Practical Nursing
Surgical Technology
Veterinarian Assistant

INDUSTRIAL TRADES

Composite Materials/Injection
Mold/NDI
Drafting/CAD
Electronics
Energy/Petroleum
Industrial Automation & Mtc/
Robotics
Machinist/CNC
Manufacturing Operations
Sheet Metal Fabricator
Welding/Fitting

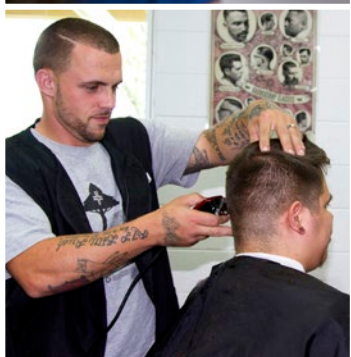
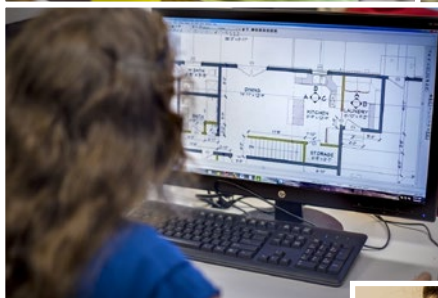
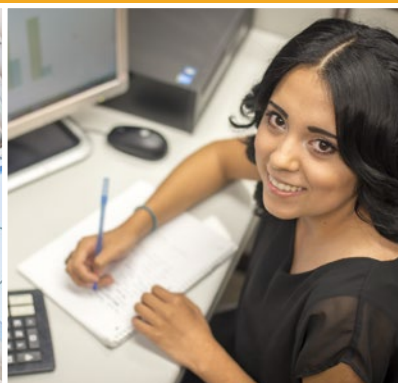
SERVICE PROFESSIONS

Cosmetology/Cosmetology Instructor
Barbering
Esthetician/Instructor
Nail Technician/Instructor
Culinary Arts
Firefighter/Emergency Services
Interior Design
Law Enforcement
Meat Cutting (Professional Retail)

TRANSPORTATION

Auto Collision Repair
Automotive Technician & Small
Engine
CDL Commercial Driver's License
Diesel, Heavy Duty

STUDENT-FOCUSED



ACCREDITATION MATTERS

UCAT Programs Meet the Highest Standards

All UCAT programs and colleges adhere to rigorous approval and accreditation standards by the Council on Occupational Education (COE). The completion, placement and licensure standards required by COE are demanding and sanctioned by the U.S. Department of Education.

Employers assist UCAT's efforts by ensuring the rigor and relevance of the curricula, assessments and learning activities, providing recommendations for equipment, materials and hands-on skills acquisition necessary for job readiness. The important partnerships UCAT colleges have with 1,083 employers ensure that the certificates offered at UCAT reflect the most current, specific requirements of industry in Utah.¹

COE, in consultation with the U.S. Department of Education, has set the benchmark at 70% of graduates being placed in related employment, continuing education, or military service. The eight UCAT colleges generally exceed this benchmark, with placement rates routinely between 80% and 95%.²

Bottom line: holders of a UCAT certificate are prepared and ready to compete in Utah's employment marketplace.



¹ Appendix H, EMPLOYER ADVISORY

² Appendix F, PLACEMENT RATES

STUDENT-FOCUSED



Shawn Owens, Ogden-Weber ATC, 2016 UCAT Student of the Year

Two years into his education at a university, Shawn decided to switch career paths and attend OWATC. Finishing the Non-Destructive Inspection (NDI) program in just six months, Shawn describes his program and education at OWATC as “laser-focused.”

NDI technicians work with engineers to define and implement tests that locate and characterize material conditions and flaws that might otherwise cause planes to crash, reactors to fail, trains to derail, and pipelines to burst. Shawn is an Inspector at Hill Air Force Base.

As UCAT Student of the Year, Shawn interfaces with the Governor, members of the Legislature and other public policy dignitaries. He is also an ambassador for technical education, makes public appearances, records television spots and advocates for the Colleges of UCAT.

Reaching out to **EVERY** student

The award-winning Workplace Foundations course at Southwest ATC focuses on vocational training opportunities for adults with intellectual or developmental disabilities (IDD). It includes simulations of basic workplace tasks and includes curriculum necessary for students to obtain and keep gainful employment and thereby becoming self-sufficient.

College President Brennan Wood and Workplace Foundations Program Administrator Crystal Pyne focus on providing meaningful, inclusive opportunities for every student. In 2016, Ms. Pyne was a recipient of the coveted ‘Golden Key’ Award from the Governor of Utah for her efforts to support the IDD Community.



EMPLOYER-DRIVEN

UCAT is employer-driven because each of the programs offered is a direct pipeline into a bustling economy. The UCAT system is led by business and community leaders serving on the Board of Trustees, individual college boards and Employer Advisory Committees.

Employers play a vital role in UCAT's mission to provide market-driven technical education, and the hundreds of members that make up the Employer Advisory Committees help ensure that every program provides the most current and relevant curriculum, labs and equipment for students.

Employers who serve on advisory committees often hire UCAT students and/or provide internships and other work-based learning opportunities. Employers also provide equipment and expertise to enhance new and current programs.

UCAT is grateful for the thousands of hours that employers donate to their local communities through serving on boards or advisory committees.



PARTNERSHIPS



CUSTOM FIT PROGRAM

Providing Relevant Training for Today's Workforce

The Custom Fit program is a flexible, customized training program designed to provide Utah businesses with a well-trained workforce. Utilizing funds appropriated by the Utah State Legislature, Custom Fit Training stimulates economic development and job creation.

In Fiscal Year 2016, Custom Fit provided training services for 1,645 companies in Utah.

Increasing the effectiveness of the workforce continues to be a major focus for employers who understand the importance of investing in their people to remain competitive in the local, national and global markets.



Skills for the Future

For 30 years, the Custom Fit program has partnered with business and industry to develop a sustainable and effective workforce that assists in developing their employees' skills, knowledge base and abilities to:

- » Expand or prepare for growth
- » Enhance productivity
- » Maintain a competitive edge in their respective industries

Custom Fit provides training for large and small companies across all industries, including manufacturing, mining, construction, service, processing, technology, healthcare and more.

Training may focus on:

- » Certificate areas for professional development, trades, or health and safety
- » Technical skills for manufacturing and professional careers
- » Employee or business development skills

Custom Fit Program Service FY16

Number of Companies Served	1,645
Number of Trainees Served	15,297
Number of Hours of Instruction	293,145
Appropriated Budget	\$3,159,200
Company Contribution	\$2,393,806



THE COLLEGES OF UCAT.



**STUDENTS RECEIVE
AN EMPLOYER-DRIVEN
AND MEANINGFUL
EDUCATION**



WE'RE READY.



The UCAT Team: faculty and staff from eight colleges at the 2016 Professional Development Conference

President

K. Chad Campbell

Service Region

Box Elder, Cache, Rich Counties

Campuses

Logan (main), Brigham City, Rich

Certificates Awarded

298 900 Hours or More

36 600 - 899 Hours

584 Less Than 600 Hours

918 Total

Weighted Avg Certificate Length

508 hours

Membership Hours

686,828 Adult

374,948 High School

1,061,776 Total

Student Headcount

3,741 Adult

1,968 High School

5,709 Total

Custom Fit

163 Companies Served

4,286 Trainees

Appropriated Budget

\$12,739,100 FY16

\$13,248,600 FY17

Capital Facilities

13,473 sq. ft. Leased

365,698 sq. ft. State-Owned

379,171 sq. ft. Total



COLLEGE HIGHLIGHT

BATC is proud to have their first students ever to graduate from the Automated Manufacturing A.M. Robotics STEM Academy who started their journey in high school. This collaborative endeavor allowed juniors and seniors from BATC and Box Elder, Cache County, Logan, and Rich County School Districts to complete their entire certificate at BATC, opening up a pathway toward an associate degree at Utah State University.

Nathan Merrill, one of the graduates, is currently applying his certificate hours at USU. Merrill holds the title of 2015 National VEX Champion and First Runner Up in the 2016 VEX World Championship. Nathan said, *"Robotics prepared me for problem-solving aspects, but STEM has given me more practical skills that I need for my career in the future."*





TRACY ALLEN

As a single mom living paycheck to paycheck, Tracy knew she needed to make a change to create more stability for her family. She researched her options, and decided on BATC's Automated Manufacturing and Robotics program. Tracy excelled in the program, and was selected for a paid internship with Nucor Steel Corporation in Plymouth, Utah as an automation and electrical maintenance technician.

STUDENT OF THE YEAR



Autoliv is a local manufacturing company with five plants in northern Utah that are continuously improving their automation processes with robotics. Autoliv products save 30,000 lives a year and are a solution to the airbag recall problem facing the country. Students at BATC are proud to work with the leader in automotive safety and employ their skills with paid internships and tuition scholarships that lead to rewarding careers. Autoliv has donated robots and manufacturing cells this year that have significantly benefited the students. In addition, BATC and Autoliv have an ongoing relationship to certify operators as maintenance first responders. Autoliv executives are active participants on the Automated Manufacturing & Robotics and Apprenticeship Advisory Committees.

STAR EMPLOYER

President

Michael J. Bouwhuis

Service Region

Davis, Morgan Counties

Campuses

Kaysville (main), Clearfield, Morgan, Draper

Certificates Awarded

460 900 Hours or More

361 600 - 899 Hours

948 Less Than 600 Hours

1,769 Total

Weighted Avg Certificate Length

554 hours

Membership Hours

1,095,761 Adult

355,730 High School

1,451,491 Total

Student Headcount

4,743 Adult

1,264 High School

6,007 Total

Custom Fit

181 Companies Served

1,745 Trainees

Appropriated Budget

\$15,008,400 FY16

\$15,514,200 FY17

Capital Facilities

12,000 sq. ft. Leased

343,059 sq. ft. State-Owned

355,059 sq. ft. Total



COLLEGE HIGHLIGHT

As the only Commission on Dental Accreditation (CODA)-accredited Dental Assisting program in the state, DATC's Dental Assisting program has a 100% job placement rate. Instructor Cathy Turnbow recently expanded the program's partnership with the University of Utah's School of Dentistry. Now, while students earn a DATC certificate, they can fulfill their clinical requirements at the U of U and gain experience working with their dentists and dental students. Students also participate in the Pantry Smiles initiative, where they work with local dentists to provide free dental care to thousands of low-income families. They have provided over \$434,000 worth of free dental care since the program began.





DANIELLE PALMER

Dani credits DATC for clarifying her educational path and giving her confidence. Dani discovered DATC's Digital Media Design Program after studying at three different universities. Being a perfectionist who desires complete comprehension of each topic, DATC's self-paced courses allowed her to fulfill her need to fully understand the material. Dani completed a work-study in the DATC Marketing Department, where she created cards, signs, and videos, and was an asset to the team. Dani is currently finishing her Bachelor's Degree at Weber State.

STUDENT OF THE YEAR



HILL AIR FORCE BASE

Serving as a critical logistics, support, maintenance and testing center for the Air Force's most advanced aircraft and weapons systems, Hill Air Force Base provides Air Force-wide, depot-level overhaul and repair support. At HAFB, demand for Composites Technicians can reach 150 per year, as required for structural repair of F-22 and F-35 aircraft and modification of traditional weapons systems. Davis Applied Technology College's training programs are vital to filling those vacancies and supporting military efforts.

STAR EMPLOYER

DIXIE APPLIED TECHNOLOGY COLLEGE

President

Kelle Stephens

Service Region

Washington County

Campus

St. George

Certificates Awarded

108 900 Hours or More

108 600 - 899 Hours

565 Less Than 600 Hours

781 Total

Weighted Avg Certificate Length

367 hours

Membership Hours

310,132 Adult

69,595 High School

379,727 Total

Student Headcount

7,569 Adult

2,528 High School

10,097 Total

Custom Fit

400 Companies Served

1,203 Trainees

Appropriated Budget

\$4,097,800 FY16

\$4,997,100 FY17

Capital Facilities

44,050 sq. ft. Leased

12,649 sq. ft. State-Owned

56,699 sq. ft. Total



COLLEGE HIGHLIGHT

DXATC is thrilled to have broken ground for a permanent college facility on the plateau once home to the St. George Regional Airport. The 150,000 square-foot project will bring all certificate programs together for the first time since the College was founded in 2001. It will give students an opportunity to train in a world class facility, legitimizing the importance of an applied technical college education in Washington County and serve the region's employers for generations. The permanent college will be completed in Fall 2017.

DXATC

Dixie Applied Technology College



BEN LORDS

Ben began attending DXATC while in high school because of his interest in technology, first by earning high school credits in the AM-STEM Information Technology Program, then continued on to the Digital Media Design Program. He also participated in a coding competition as a DXATC student, and his team won 1st place! He has since graduated high school and works as a Curriculum Developer part-time at DXATC while he furthers his education attending Dixie State University.

STUDENT OF THE YEAR



Intermountain Dixie Regional Medical Center

Mitch Cloward leads healthcare in southern Utah as the Intermountain Healthcare, Dixie Regional Medical Center Administrator. Busy as he is, Mitch has always made time to support the development of DXATC. With input from key players at Dixie Regional, DXATC has expanded Medical Assisting and Pharmacy Technician, added Healthcare Coding Technician, Certified Nurse Assistant, Medication Technician, Phlebotomy, and a number of Emergency Response programs. Mitch dispatches nurses, pharmacists, and administrators to serve on Employer Advisory committees at DXATC. Dixie Regional Hospital, Instacare facilities and physicians' offices hire the majority of the DXATC healthcare graduates.

STAR EMPLOYER

MOUNTAINLAND APPLIED TECHNOLOGY COLLEGE

President

Clay Christensen

Service Region

Summit, Utah, Wasatch Counties

Campuses

Lehi (main), Orem, Spanish Fork

Certificates Awarded

326 900 Hours or More

336 600 - 899 Hours

1,532 Less Than 600 Hours

2,194 Total

Weighted Avg Certificate Length

369 hours

Membership Hours

626,153 Adult

448,787 High School

1,074,940 Total

Student Headcount

2,868 Adult

1,373 High School

4,241 Total

Custom Fit

121 Companies Served

2,295 Trainees

Appropriated Budget

\$10,765,400 FY16

\$11,413,300 FY17

Capital Facilities

53,853 sq. ft. Leased

131,099 sq. ft. State-Owned

184,952 sq. ft. Total



COLLEGE HIGHLIGHT

Two years ago, MATC and Xactware formed a partnership to develop the MATC Web Programming & Development Program, beginning with a cohort of 20 students. Today they now have a 3rd cohort of students that are attending 9 months of class time learning software development. Curriculum is developed and taught by Xactware Developers to bring students to a Junior Level Front End Web Developer Proficiency. At the end of their class time, students participate in a 240-hour externship at Xactware working in various development teams.

The first cohort of students have just completed their 240 hour externship with Xactware. Of the 18 students that participated in the externship, 13 are working for Xactware. MATC and Xactware are excited that so many were able to obtain employment right after they finished the externship.





SHANELLE STEVENSON

Shanelle found her passion for healthcare after experiencing the tragedy of losing her young son. She was grateful for the doctors and nurses who were by her family's side to explain procedures and comfort them. A few years later, she enrolled in the Medical Assistant Program at MATC, and completed in an amazingly short time of 7 months. She currently works for a clinic as a medical assistant, with plans to later enroll in MATC's LPN program, then complete her RN so she can help others and make a difference in people's lives.

STUDENT OF THE YEAR

XACTWARE®

Headquartered in Lehi, UT, Xactware Solutions provides computer software solutions for professionals both in the US and internationally involved in estimating all phases of building and repair. Xactware users can utilize the software on a desktop, laptop, tablet, smartphone, or "on the cloud" using browser-based solutions.

Xactware's Chief Operating Officer Jim Evans serves as the UCAT Board of Trustees Chair and a member of the Board of Directors for MATC. Employees from Xactware also serve on MATC's Employer Advisory Committee for the Web Programming & Development Program. Mountainland ATC is proud to have Xactware as one of its essential employer partners.

STAR EMPLOYER

President

Collette Mercier

Service Region

Weber County

Campuses

Ogden (main & Business Depot)

Certificates Awarded

399 900 Hours or More

122 600 - 899 Hours

827 Less Than 600 Hours

1,348 Total

Weighted Avg Certificate Length

480 hours

Membership Hours

921,533 Adult

264,859 High School

1,186,392 Total

Student Headcount

4,392 Adult

1,443 High School

5,835 Total

Custom Fit

146 Companies Served

1,878 Trainees

Appropriated Budget

\$14,541,800 FY16

\$15,137,700 FY17

Capital Facilities

0 sq. ft. Leased

433,680 sq. ft. State-Owned

433,680 sq. ft. Total



COLLEGE HIGHLIGHT

The Ogden-Weber Tech College was recently approved as a testing facility by the American Welding Society's (AWS) Certification Program for Robotic Arc Welding - Operators and Technicians (CRAW). The CRAW certification allows OWATC to administer practical and written exams to welding personnel throughout the Intermountain Region. The Tech College is one of only five CRAW approved testing centers in the United States, with the next closest located in Colorado.

Located in a manufacturing hot spot, OWATC will benefit local employers who are incorporating robotics and other automated welding processes into their manufacturing facilities. The college also offers hands-on training using the robotic arc welder as part of the Welding program's curriculum.





SHAWN OWENS

Shawn was seeking a career he was excited and passionate about. He found his place at OWATC in the Non-Destructive Inspection Program where he learned to test components of major structures and spot flaws in parts before they become critical. NDI Inspection is a very demanding profession that asks for a person's absolute best effort due to the nature of the business. Shawn is educated, certified, and prepared to work in this field thanks to OWATC. Shawn is employed at Hill Air Force Base as an Inspector.

STUDENT OF THE YEAR

The logo for WhiteClouds, featuring the word "whiteclouds" in a lowercase, sans-serif font. "white" is in white and "clouds" is in a light blue color. The logo is set against a dark blue rectangular background.

whiteclouds

Headquartered in Ogden, Utah, WhiteClouds is the world's largest full-color, 3D-printing facility to deliver additive manufacturing solutions for medical, architecture, and entertainment uses. A strong supporter of STEM education, WhiteClouds has employed Ogden-Weber Tech College students from Information Technology, Graphic Design, and Computer-Aided Design programs. Experts in the innovative field of additive manufacturing, WhiteClouds provides skillful engagement as part of Ogden-Weber Tech College's employer advisory teams.

STAR EMPLOYER

SOUTHWEST APPLIED TECHNOLOGY COLLEGE

President

Brennan M. Wood

Service Region

Beaver, Garfield, Iron, Kane Counties

Campuses

Cedar City (main), Kanab

Certificates Awarded

30 900 Hours or More

58 600 - 899 Hours

253 Less Than 600 Hours

341 Total

Weighted Avg Certificate Length

334 hours

Membership Hours

125,938 Adult

98,410 High School

224,348 Total

Student Headcount

990 Adult

894 High School

1,884 Total

Custom Fit

317 Companies Served

853 Trainees

Appropriated Budget

\$4,280,800 FY16

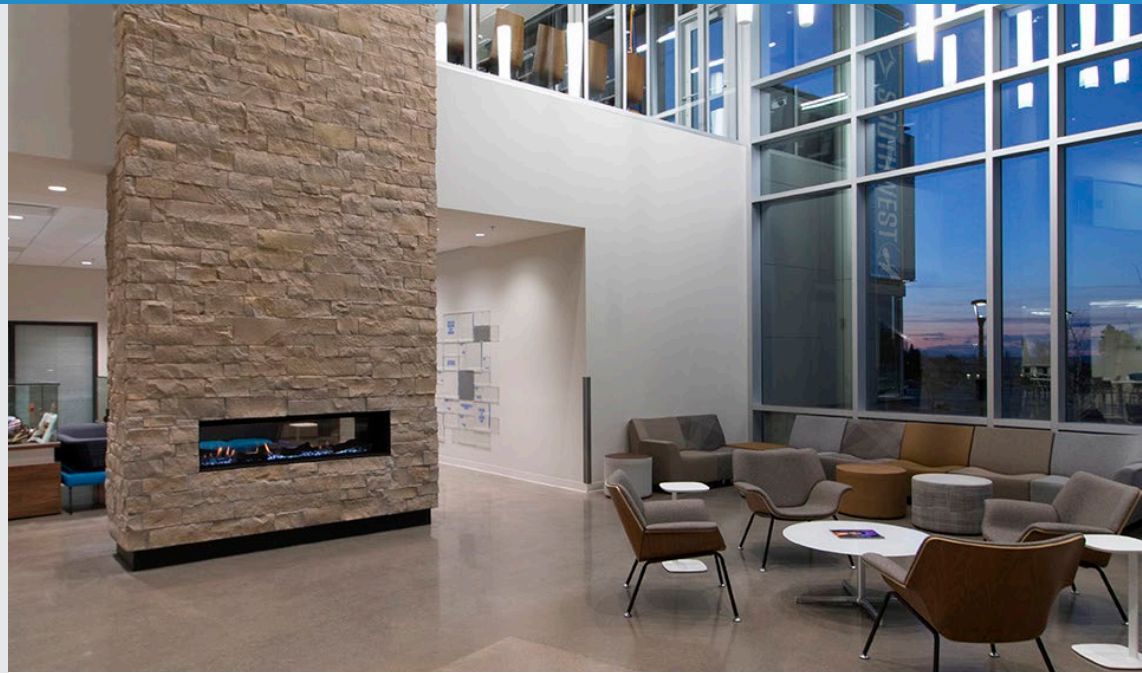
\$4,971,000 FY17

Capital Facilities

29,800 sq. ft. Leased

117,182 sq. ft. State-Owned

146,982 sq. ft. Total



COLLEGE HIGHLIGHT

In December of 2015, Southwest Applied Technology College (Southwest ATC) took possession of a new building that significantly increased its Allied Health Professions, Computer Science, Welding Technology, Industrial Maintenance and Manufacturing certificate programs. In addition to expanding and enhancing these programs, the college is proud to introduce a state of the art facility for a new Culinary Arts program. Already SWATC is seeing an impact as the new facility has increased the college's exposure, generating greater interest and participation throughout its 4-county service region. This change is providing a wonderful opportunity for the college as they continue to elevate their resources available to meet the growing demand of both employers and students as they seek for excellent training and hands-on experience.



SOUTHWEST
APPLIED TECHNOLOGY COLLEGE



DOT MCFARLAND

After completing her GED, Dot enrolled in the Front and Back Office Medical Assistant Program at SWATC. She learned from instructors that worked in the medical field and prepared her for real life scenarios in her future career. She was quickly placed in an externship and after completing her hours, was hired by the same company as a medical assistant for a cardiology clinic. Dot is a proud full-time employee with benefits.

STUDENT OF THE YEAR



The Southwest Applied Technology College's (SWATC) Star Employer Advisor is the President of SyberJet, Chuck Taylor. SyberJet manufactures the world's fastest and longest range light business jet. SWATC's partnership with SyberJet has made the expansion of the Utah Aerospace Pathways program to Iron County possible. Chuck Taylor graciously provides his time and expertise by serving on SWATC's Advisory Committee, and also serves as a member of the SWATC Board of Directors.

STAR EMPLOYER

TOOELE APPLIED TECHNOLOGY COLLEGE

President

Scott J. Snelson

Service Region

Tooele County

Campus

Tooele

Certificates Awarded

53	900 Hours or More
13	600 - 899 Hours
162	Less Than 600 Hours
228	Total

Weighted Avg Certificate Length

495 hours

Membership Hours

126,771	Adult
21,485	High School
148,256	Total

Student Headcount

617	Adult
128	High School
745	Total

Custom Fit

32	Companies Served
621	Trainees

Appropriated Budget

\$3,261,100	FY16
\$3,574,400	FY17

Capital Facilities

6,808 sq. ft.	Leased
73,751 sq. ft.	State-Owned
80,559 sq. ft.	Total



COLLEGE HIGHLIGHT

Tooele Applied Technology College is proud to announce that it opened its doors to the first Practical Nursing students on August 29, 2016. This program has been in demand for many years in the area and TATC is happy to be the institution that has brought it to fruition.

The Practical Nursing (PN) program has a state-of-the-art 1,350 square foot skills/simulation lab for students to learn and develop valuable skills that will benefit them in the workplace. This lab has also benefited the Certified Nursing Assistant program students.

The PN program was developed to meet the needs of regional employers and Utah State University-Tooele. The partnership between TATC and USU-Tooele provides students an opportunity to work as a Licensed Practical Nurse or enter a Registered Nurse (RN) program.





BRITTANY BALDY

After struggling with Dyslexia throughout K-12, Brittany was told by a high school teacher that she was not expected to go to college, or even pass the basic skills test to graduate high school. Brittany proved her teacher wrong and later graduated with a 3.9 GPA. Brittany enrolled in TATC's Certified Nursing Program, where she discovered supportive instructors who cared about her success. She found a deeper compassion for others, and she ultimately would like to continue her education to be a Registered Nurse. She also completed the Nail Technician Program to have another skill set in her back pocket.



Rocky Mountain Care-Willow Springs in Tooele has been an amazing employer and partner. Not only do personnel sit on the Employer Advisory Committee (EAC) for both the Certified Nursing Assistant (CNA) and Practical Nursing (PN) programs, but the company has also supported TATC in many ways. The Tooele location has been so successful that they will be expanding into a new state of the art facility. Rocky Mountain Care accepts TATC's CNA and PN students into clinical rotations and will hire students upon completion. Rocky Mountain Care employees have always been gracious, understanding and helpful with each and every one of TATC's students as they train to be successful in the industry.

STUDENT OF THE YEAR

STAR EMPLOYER

UINTAH BASIN APPLIED TECHNOLOGY COLLEGE

President

Aaron K. Weight

Service Region

Daggett, Duchesne, Uintah Counties

Campuses

Roosevelt (main), Vernal

Certificates Awarded

63 900 Hours or More

86 600 - 899 Hours

422 Less Than 600 Hours

571 Total

Weighted Avg Certificate Length

289 hours

Membership Hours

274,672 Adult

262,090 High School

536,762 Total

Student Headcount

2,870 Adult

1,597 High School

4,467 Total

Custom Fit

87 Companies Served

1,476 Trainees

Appropriated Budget

\$7,189,600 FY16

\$7,629,000 FY17

Capital Facilities

0 sq. ft. Leased

191,636 sq. ft. State-Owned

191,636 sq. ft. Total



COLLEGE HIGHLIGHT

Uintah Basin Applied Technology College is excited to celebrate the success of two secondary students who have earned Gold Medals at the State SkillsUSA Competition, not once, but two years in a row! Levi Lewis conquered again in the Diesel Mechanic Division, and Chandler Vincent achieved his second win in the Welding Division. This upcoming year, Chandler has the rare opportunity to compete in the AWS U.S. Invitational Weld Trials where he will compete against the top 12 welders in the nation. The winner will have a chance to represent USA at the World Championship.

Students like Levi and Chandler have learned, excelled, and become champions in their trades because of talented UBATC instructors who are dedicated to their craft and provide exceptional training.





CHANDLER VINCENT

When Chandler first touched a welder, he knew it was what he was meant to do. He spent the next four years learning from UBATC welding instructor Kevin Mitchell, whom he admires as a mentor and friend. Chandler has represented UBATC at SkillsUSA Competitions at regional, state, and national levels. Chandler is currently operating his company, CRV Welding, that he started at 16 years old. Chandler is the first generation of his family to go to college.

STUDENT OF THE YEAR



Two key healthcare facilities, Uintah Basin Medical Center and Ashley Regional Medical Center, have partnered with Uintah Basin Applied Technology College, making it possible for students to have access to hands-on training, current curriculum, and up-to-date equipment; preparing Nurse Assistants, Medical Assistants, and Practical Nurses for employment. As a result of this partnership, UBATC students are well positioned for their future careers.

STAR EMPLOYER

MEMBERSHIP HOUR HISTORY

		FY12	FY13	FY14	FY15	FY16	FY15 to FY16 Growth	
BATC	High School	241,527	275,885	359,936	361,369	374,948	13,579	3.76%
	Adult	856,032	772,078	721,523	653,780	686,828	33,048	5.05%
	Total	1,097,559	1,047,963	1,081,459	1,015,149	1,061,776	46,627	4.59%
DATC	High School	219,937	206,592	229,301	251,798	355,730	103,932	41.28%
	Adult	1,314,258	1,197,770	1,093,240	1,165,779	1,095,761	(70,018)	-6.01%
	Total	1,534,195	1,404,362	1,322,541	1,417,577	1,451,491	33,914	2.39%
DXATC	High School	42,283	34,638	46,539	53,081	69,595	16,514	31.11%
	Adult	225,640	219,188	261,847	304,060	310,132	6,072	2.00%
	Total	267,923	253,826	308,386	357,141	379,727	22,586	6.32%
MATC	High School	377,467	409,941	392,877	399,247	448,787	49,540	12.41%
	Adult	492,153	512,400	524,144	597,708	626,153	28,445	4.76%
	Total	869,620	922,341	917,021	996,955	1,074,940	77,985	7.82%
OWATC	High School	223,573	220,051	176,504	211,602	264,859	53,257	25.17%
	Adult	1,056,044	954,265	921,981	908,776	921,533	12,757	1.40%
	Total	1,279,617	1,174,316	1,098,485	1,120,378	1,186,392	66,014	5.89%
SWATC	High School	80,286	74,595	87,177	91,687	98,410	6,723	7.33%
	Adult	217,300	168,280	144,525	132,240	125,938	(6,302)	-4.77%
	Total	297,586	242,875	231,702	223,927	224,348	421	0.19%
TATC	High School	4,995	3,824	7,941	12,598	21,485	8,887	70.54%
	Adult	81,807	84,715	118,736	124,454	126,771	2,317	1.86%
	Total	86,802	88,539	126,677	137,052	148,256	11,204	8.17%
UBATC	High School	273,605	212,275	211,283	243,095	262,090	18,995	7.81%
	Adult	388,183	322,722	337,031	296,953	274,672	(22,281)	-7.50%
	Total	661,788	534,997	548,314	540,048	536,762	(3,286)	-0.61%
UCAT TOTALS	High School	1,463,673	1,437,801	1,511,558	1,624,477	1,895,904	271,427	16.71%
	Adult	4,631,417	4,231,418	4,123,027	4,183,750	4,167,788	(15,962)	-0.38%
	Total	6,095,090	5,669,219	5,634,585	5,808,226	6,063,692	255,466	4.40%

STUDENT HEADCOUNT HISTORY

		FY12	FY13	FY14	FY15	FY16	FY15 to FY16 Growth	
BATC	High School	1,686	1,737	1,722	1,779	1,968	189	10.62%
	Adult	4,891	4,253	3,860	3,527	3,741	214	6.07%
	Total	6,577	5,990	5,582	5,306	5,709	403	7.60%
DATC	High School	1,375	1,095	946	1,086	1,264	178	16.39%
	Adult	6,204	5,197	4,923	5,160	4,743	(417)	-8.08%
	Total	7,579	6,292	5,869	6,246	6,007	(239)	-3.83%
DXATC	High School	843	985	730	951	2,528	1,577	165.83%
	Adult	5,836	6,108	5,693	6,693	7,569	876	13.09%
	Total	6,679	7,093	6,423	7,644	10,097	2,453	32.09%
MATC	High School	1,349	1,422	1,284	1,259	1,373	114	9.05%
	Adult	2,702	2,375	2,456	2,925	2,868	(57)	-1.95%
	Total	4,051	3,797	3,740	4,184	4,241	57	1.36%
OWATC	High School	1,293	1,219	1,028	1,203	1,443	240	19.95%
	Adult	4,066	4,008	3,924	4,221	4,392	171	4.05%
	Total	5,359	5,227	4,952	5,424	5,835	411	7.58%
SWATC	High School	880	644	798	839	894	55	6.56%
	Adult	1,035	789	743	669	990	321	47.98%
	Total	1,915	1,433	1,541	1,508	1,884	376	24.93%
TATC	High School	31	30	44	86	128	42	48.84%
	Adult	413	401	563	555	617	62	11.17%
	Total	444	431	607	641	745	104	16.22%
UBATC	High School	1,399	1,269	1,348	1,449	1,597	148	10.21%
	Adult	5,374	4,440	4,542	3,791	2,870	(921)	-24.29%
	Total	6,773	5,709	5,890	5,240	4,467	(773)	-14.75%
UCAT TOTALS	High School	8,856	8,401	7,900	8,652	11,195	2,543	29.39%
	Adult	30,521	27,571	26,704	27,541	27,790	249	0.90%
	Total	39,377	35,972	34,604	36,193	38,985	2,792	7.71%

CERTIFICATES AWARDED

	FY12	FY13	FY14	FY15	FY16	FY15 to FY16 Growth	
BATC	806	912	829	862	918	56	6.50%
DATC	1,310	1,371	1,419	1,468	1,769	301	20.50%
DXATC	455	258	471	631	781	150	23.77%
MATC	1,529	1,636	1,776	2,182	2,194	12	0.55%
OWATC	1,022	1,029	1,129	1,240	1,348	108	8.71%
SWATC	145	126	270	211	341	130	61.61%
TATC	132	99	200	206	228	22	10.68%
UBATC	447	487	877	782	571	(211)	-26.98%
UCAT TOTALS	5,846	5,918	6,971	7,582	8,150	568	7.49%

FY2016 Certificates by Length

Length	BATC	DATC	DXATC	MATC	OWATC	SWATC	TATC	UBATC	Total
≤ 599 Hours	584	948	565	1,532	827	253	162	422	5,293
600 - 899 Hours	36	361	108	336	122	58	13	86	1,120
≥ 900 Hours	298	460	108	326	399	30	53	63	1,737
Total	918	1,769	781	2,194	1,348	341	228	571	8,150

HIGH SCHOOL ACCESS

High School Participation	FY14	FY15	FY16	Growth	+ or -
Membership Hours	1,511,558	1,624,477	1,895,903	271,427	16.71%
Student Headcount	7,900	8,652	11,195	2,543	29.39%
Program Certificates	1,367	1,416	1,585	169	11.94%

SECONDARY STUDENTS	MEMBERSHIP HOURS	STUDENT HEADCOUNT
BATC	374,948	1,968
DATC	355,730	1,264
DXATC	69,595	2,528
MATC	448,787	1,373
OWATC	264,859	1,443
SWATC	98,410	894
TATC	21,485	128
UBATC	262,090	1,597

UCAT COLLEGE CERTIFICATES

*Number of program certificates at each college (lengths shown in parentheses)**

PROGRAM AREA (with CIP codes)	BATC	DATC	DXATC	MATC	OWATC	SWATC	TATC	UBATC
BUSINESS TECHNOLOGY PROGRAMS								
Accounting Technician (520302, 520401)	1 (1200)			2 (150-1120)		1 (930)	1 (1020)	2 (480-720)
Business Technology (520401, 520701)	2 (900-1200)	2 (675-1150)	5 (668-1350)	3 (605-1070)	1 (1160)	4 (630-1200)	5 (240-1260)	3 (450-900)
Real Estate Pre-Licensure (521501)	2 (120)				1 (120)			
Retail Sales & Fashion Merchandising (591902)	3 (120-1050)							
COMPUTER TECHNOLOGY PROGRAMS								
Information Technology (110101, 110201, 470104)	1 (1200)	2 (600-1200)	6 (150-1200)	9 (120-1170)	1 (1335)	1 (930)	4 (410-1210)	
Media/Design Technology (110801)	2 (900-1500)	2 (480-1200)	1 (600)	3 (600-1230)	1 (1155)	4 (930-1350)		
Programming/Software Dev. (110101, 110201)			2 (200-600)	1 (903)	2 (60-1335)	1 (660)		
Web & Mobile Development (110101, 110201, 110801, 520208)	1 (1200)		2 (600)		1 (1335)	1 (600)		
CONSTRUCTION TRADES PROGRAMS								
Cabinetmaking (480703)	1 (900)							
Carpentry (460201)	1 (960)			3 (320-324)	2 (30-220)			2 (590-600)
Electrician Apprentice (460302)	1 (720)	1 (720)	1 (720)	1 (720)	6 (8-900)			
Heating, Ventilation & AC Service (470201)	1 (720)	1 (720)	7 (150-900)	1 (360)	2 (18-740)			
Plumbing Apprentice (460503)	1 (720)	1 (720)	1 (720)	1 (720)	1 (810)			
Sign Fabricator Apprentice (460503)	1 (720)							
HEALTH CARE PROFESSIONS PROGRAMS								
Certified Nursing Asst./Medication Aide (513902)	1 (100)	1 (108)	1 (100)	2 (100-135)	1 (110)	1 (120)	1 (128)	1 (100)
Dental Assisting (510601)	1 (1350)	2 (450-1200)		2 (750-900)	1 (1425)			
Dental Office (510601)				1 (150)				
Emergency Medical Technician (510801, 510904)	2 (90-140)	2 (142-144)	2 (140)	3 (135-360)		2 (166-214)		
Medical Assisting (510801)	1 (1200)	1 (1500)	1 (1049)	1 (900)	3 (90-1545)	2 (960-1410)	1 (915)	1 (940)
Medical Coding (510707, 510713)	1 (480)		1 (900)	2 (645-1100)	2 (30-1040)	1 (750)	1 (630)	
Medical Office Admin/Health Information (510709, 510716, 510801)	1 (390)	1 (990)	1 (510)	1 (630)	1 (910)	2 (600-910)		
Medical Office Laboratory Technician (510802)							1 (335)	
Paramedic (510904)			1 (1600)					
Pharmacy Technician (510805)	1 (360)	1 (780)	1 (600)	1 (600)	1 (600)			1 (360)
Phlebotomist (511009)	1 (60)		1 (60)	1 (60)		1 (100)	1 (275)	

UCAT COLLEGE CERTIFICATES

PROGRAM AREA (with CIP codes)	BATC	DATC	DXATC	MATC	OWATC	SWATC	TATC	UBATC
Practical Nursing (513901)	1 (1500)	1 (900)		2 (24-900)	1 (930)		1 (900)	1 (900)
Surgical Technology (510909)		1 (1685)		1 (1685)				
Veterinarian Assistant (510808)	1 (600)							
INDUSTRIAL TRADES PROGRAMS								
Composite Materials/Injection Mold/NDI (141801, 150702, 411801, 470303)	2 (300-900)	1 (705)		3 (90-665)	4 (12-900)			
Drafting/CAD (151302)	5 (900-1500)	4 (390-1035)	6 (330-1200)		2 (30-1315)			1 (750)
Electronics (470105)	4 (600-1500)				1 (280)			
Energy/Petroleum (150903)								4 (30-900)
Industrial Automation & Mtc/Robotics (150613, 470303)	9 (300-1500)	2 (720-900)	6 (180-900)		2 (40-1240)	1 (630)	1 (960)	
Machinist/CNC (480501)	3 (720-1440)	2 (690-1260)	1 (900)	2 (630-990)	5 (30-1575)			1 (900)
Manufacturing Operations (150613)			1 (900)					
Sheet Metal Fabricator (480506)					3 (160-998)			
Welding/Fitting (480508, 480511)	2 (330-960)	4 (225-1200)		14 (30-1140)	4 (30-1695)	2 (990-1410)	3 (265-1125)	2 (600-990)
SERVICE PROFESSIONS PROGRAMS								
Cosmetology/Cosm. Instructor (120401, 120403)	3 (1000-2000)	1 (1600)		4 (25-1600)	1 (1600)		2 (1000-1600)	
Barbering (120401, 120402)					1 (1000)		1 (1000)	
Esthetician/Instructor (120409)	4 (300-1200)	2 (600-1299)						
Nail Technician/Instructor (120401, 120403)	2 (150-300)	1 (300)		1 (300)	1 (300)		2 (150-300)	
Culinary Arts (120505)	2 (900-1620)	1 (1140)		2 (600-1200)	2 (950-1105)			1 (990)
Firefighter/Emergency Services (430203)	2 (530-860)	3 (76-335)						
Interior Design (500408)	2 (900-1200)							
Law Enforcement (430107)	3 (185-330)							
Meat Cutting (Professional Retail) (120506)	1 (900)							
TRANSPORTATION PROGRAMS								
Auto Collision Repair (470603)	1 (1230)							
Automotive Technician & Small Engine (470604, 470606)	1 (1440)	12 (60-1200)		12 (16-630)	1 (1020)	1 (1444)		1 (990)
CDL Commercial Drivers License (490205)	1 (300)		1 (200)	1 (160)		1 (240)	1 (160)	3 (122-420)
Diesel, Heavy Duty (470605)	1 (1110)	2 (510-1170)	15 (70-1400)	2 (60-600)			1 (1150)	1 (1050)
Heavy Equipment Operator (490202)	3 (300-900)				1 (480)			

*Program lengths shown in # of hours expected to complete certificates. Certificates listed are postsecondary programs, are approved (or pending) by the Council on Occupational Education for college accreditation, and are tracked for completion, placement, and licensure.

COMPLETION, PLACEMENT & LICENSURE

BRIDGERLAND	Completion	Placement	Licensure
BRIGHAM CAMPUS			
Business Technology	69%	89%	N/A
Cosmetology	82%	78%	100%
Dental Assisting	100%	100%	N/A
Health Sciences	86%	75%	100%
Media Design	67%	100%	N/A
MAIN CAMPUS			
Animal Sciences	67%	82%	N/A
Apprenticeship	88%	100%	N/A
Auto Collision	67%	100%	N/A
Automated Manufacturing & Robotics	93%	100%	N/A
Automotive Service	80%	86%	N/A
Building Technology	81%	80%	N/A
Business Technology	75%	94%	100%
Culinary Arts	100%	100%	N/A
Dental Assisting	70%	88%	N/A
Diesel	91%	90%	N/A
Drafting	64%	100%	N/A
Electronic Engineering Technology	64%	100%	N/A
Emergency Medical Services	98%	89%	100%
Fashion Merchandising	100%	100%	N/A
Fire & Rescue Services	88%	86%	N/A
Health Sciences	90%	72%	99%
Heavy Equipment Operator/CDL	98%	79%	100%
Information Technology	61%	100%	N/A
Interior Design	78%	80%	N/A
Machining Technology	76%	100%	N/A
Meat Services	78%	100%	N/A
Media Design	69%	70%	N/A
Nursing	94%	95%	100%
Police Academy	83%	76%	100%
Web & Mobile Development	62%	75%	N/A
Welding Technology	67%	83%	N/A

DAVIS	Completion	Placement	Licensure
MAIN CAMPUS			
Advanced Esthetician	74%	84%	94%
Architectural and Engineering Design	64%	78%	N/A
Automotive Technology	78%	100%	N/A
Business Technology	64%	88%	N/A
CNC Machining	61%	93%	N/A
Composite Materials Technology	89%	97%	N/A
Cosmetology	61%	79%	93%
Culinary Arts	63%	100%	N/A
Dental Assisting	73%	100%	N/A
Diesel/Heavy Duty Technology	82%	100%	N/A
Digital Media Design	70%	72%	N/A
Electrician Apprentice	88%	100%	N/A
Electronic Health Information Technician	63%	80%	N/A
Heating and Air Conditioning	63%	90%	N/A
Information Technology	66%	97%	N/A
Medical Assistant	70%	79%	N/A
Motor Sports Technician	69%	83%	N/A
Nail Technician	65%	87%	100%
Nurse Assistant	85%	73%	92%
Pharmacy Technician	97%	99%	99%
Plumbing Apprentice	92%	94%	N/A
Practical Nurse	100%	100%	100%
Surgical Technology	67%	100%	N/A
Welding Technology	63%	90%	N/A
FREEPORT CAMPUS			
Emergency Services	87%	73%	N/A
FREEPORT WEST CAMPUS			
Automation Technology	86%	98%	N/A

COMPLETION, PLACEMENT & LICENSURE

DIXIE	Completion	Placement	Licensure
MAIN CAMPUS			
Advanced Emergency Medical Technician	100%	100%	N/A
CNC Machining	100%	89%	N/A
Drafting	61%	100%	N/A
Electrical Apprenticeship	67%	100%	N/A
Emergency Medical Technician	95%	95%	N/A
Healthcare Coding Technician	100%	100%	N/A
HVAC Technician	83%	100%	N/A
Industrial & Facilities Maintenance	93%	100%	N/A
Information Technology	63%	100%	N/A
Manufacturing Operations	100%	100%	N/A
Medical Assisting NEW	93%	95%	N/A
Nursing Assistant	100%	100%	N/A
Office Management	100%	91%	N/A
Pharmacy Technology	94%	93%	100%
Plumbing Apprenticeship	67%	100%	N/A

MOUNTAINLAND	Completion	Placement	Licensure
LEHI (THANKSGIVING POINT) CAMPUS			
Accelerated Medical Billing and Coding	100%	100%	N/A
Business Technology: Accounting	75%	100%	N/A
Commercial Truck Driving	100%	79%	100%
Cosmetology	98%	89%	100%
Cosmetology: Eyelash Extensions	83%	N/A	N/A
Culinary Arts	97%	96%	N/A
Dental Assistant	100%	89%	N/A
Digital Media Technology	65%	73%	N/A
Emergency Medical Technician	92%	73%	96%
Information Technology	65%	70%	N/A
Medical Assistant	85%	93%	N/A
Medical Billing & Coding	100%	100%	N/A
Medical Office Administration	100%	100%	N/A
Nail Technician	100%	88%	100%
Nurse Assistant	85%	79%	100%
Pharmacy Technician	97%	96%	100%
Phlebotomy Technician	92%	N/A	N/A
Practical Nursing	86%	72%	100%
Vehicle Emissions	89%	N/A	N/A
Vehicle Safety Inspection	92%	N/A	N/A
OREM CAMPUS			
Business Technology: Accounting	95%	89%	N/A
Composite Technology	91%	67%	N/A
Dental Assistant	95%	100%	N/A
Electrical Apprenticeship	100%	N/A	N/A
Emergency Medical Technician	67%	100%	100%
HVAC Apprenticeship	100%	N/A	N/A
Marketing	100%	100%	N/A
Medical Assistant	95%	97%	N/A
Nurse Assistant	81%	78%	100%
Pipe Welding Processes	100%	100%	N/A

COMPLETION, PLACEMENT & LICENSURE

MOUNTAINLAND	Completion	Placement	Licensure
OREM CAMPUS CONTINUED			
Plumbing Apprenticeship	100%	N/A	N/A
Welding Skills Upgrade	100%	N/A	N/A
Welding Technology	87%	80%	N/A
SPANISH FORK CAMPUS			
Cosmetology	88%	100%	100%
Cosmetology: Eyelash Extensions	100%	N/A	N/A
Dental Assistant	100%	81%	N/A
Diesel Mechanics	75%	92%	N/A
Emergency Medical Technician	100%	100%	100%
Information Technology	65%	73%	N/A
Medical Assistant	81%	97%	N/A
Medical Billing & Coding	100%	100%	N/A
Medical Office Administration	100%	89%	N/A
Nail Technician	100%	100%	100%
Nurse Assistant	96%	95%	100%
Pharmacy Technician	80%	100%	100%

OGDEN-WEBER	Completion	Placement	Licensure
MAIN CAMPUS			
Barbering	90%	100%	100%
Business Technology	90%	89%	N/A
Clinical Laboratory Assistant	100%	N/A	N/A
Composites	89%	82%	N/A
Computer Aided Design Technology	93%	96%	N/A
Computer Graphic Designer	100%	86%	N/A
Construction Basics	96%	88%	N/A
Cosmetology	88%	76%	100%
Culinary Arts	89%	93%	N/A
Dental Assisting	69%	100%	N/A
Electrical Trades Preparation	91%	80%	N/A
Electrical Trades Skills Upgrade	100%	N/A	N/A
Electrician Apprentice Related Instruction	94%	N/A	N/A
HVAC Technician Related Instruction	95%	N/A	N/A
Industrial Automation Maintenance	98%	98%	N/A
Industrial Automation Maintenance Skills Upgrade	100%	N/A	N/A
Information Technology Networking	86%	96%	N/A
Machinist Apprentice Related Instruction	100%	N/A	N/A
Machinist I	98%	100%	N/A
Machinist II	100%	100%	N/A
Machinist III	100%	80%	N/A
Medical Assistant	97%	100%	N/A
Medical Coder	92%	73%	N/A
Medical Office Administration	98%	81%	N/A
Metal Fabricator	100%	100%	N/A
Nail Technician	81%	100%	100%
Non-Destructive Inspection	96%	96%	N/A

COMPLETION, PLACEMENT & LICENSURE

OGDEN-WEBER	Completion	Placement	Licensure
MAIN CAMPUS CONTINUED			
Non-Destructive Inspection Testing Skills Upgrade	100%	N/A	N/A
Nursing Assistant	93%	92%	N/A
Pharmacy Technician	87%	88%	100%
Plumber Apprentice Related Instruction	96%	N/A	N/A
Practical Nurse	95%	97%	100%
Radiology Practical Technician Skills Upgrade	75%	N/A	N/A
Sheet Metal Worker Apprentice Related Instruction	100%	N/A	N/A
Software Development	75%	100%	N/A
Software Development Skills Upgrade	100%	N/A	N/A
Soldering Technician	100%	50%	N/A
Web Development	72%	85%	N/A
Welder Advanced	100%	100%	N/A
Welder Production	92%	88%	N/A
Welder Skills Upgrade	100%	N/A	N/A
OGDEN BUSINESS DEPOT SATELLITE CAMPUS			
Automotive Technician	89%	100%	N/A
Real Estate Agent Pre-Licensure	99%	100%	100%
JATC CAMPUS - 3400 W 2100 S SLC UT			
Communication Technician Apprentice Related Instruction JATC	100%	N/A	N/A
Electrician Apprentice Related Instruction JATC	95%	N/A	N/A
SHEET METAL JATC CAMPUS - 2480 S 3400 W SLC UT			
Sheet Metal Worker Apprentice Related Instruction JATC	100%	N/A	N/A

SOUTHWEST	Completion	Placement	Licensure
MAIN CAMPUS			
Accounting Clerk	75%	100%	N/A
Business Administrative Support II	67%	100%	N/A
Certified Coding Associate	50%	100%	N/A
Computer Applications	100%	100%	N/A
Digital Media Comprehensive	100%	100%	N/A
Industrial Maintenance & Automation	82%	78%	N/A
Information Technology	50%	100%	N/A
Medical Clinical Assistant	43%	67%	N/A
Nursing Assistant	75%	73%	100%
Phlebotomy	80%	75%	N/A
Welding	71%	80%	N/A
AUTOMOTIVE EXTENSION CAMPUS			
Advanced Emergency Medical Technician-AEMT	100%	93%	100%
Automotive Technician	94%	88%	N/A
Emergency Medical Technician-Basic	96%	78%	100%
Professional Truck Driving	90%	78%	100%
KANE CAMPUS			
Nursing Assistant	91%	100%	100%
CIRCLE FOUR FARMS			
Herd Technician (Job Upgrade)	80%	N/A	N/A
Pork Production (Job Upgrade)	87%	N/A	N/A
PANGUITCH HIGH SCHOOL			
Nursing Assistant	100%	100%	N/A

COMPLETION, PLACEMENT & LICENSURE

TOOELE	Completion	Placement	Licensure
MAIN CAMPUS			
Accounting Clerk	67%	100%	N/A
Certified Nursing Assistant	100%	95%	100%
Clinical Medical Assistant	71%	92%	N/A
Commercial Drivers License (CDL)	89%	100%	100%
Heavy Duty Diesel Technician	83%	100%	N/A
Industrial Maintenance Technician	91%	89%	N/A
Medical Billing and Coding	100%	100%	N/A
Nail Technician	100%	100%	100%
Nail Technician Instructor	100%	100%	100%
Network Administrator (MCSA)	67%	100%	N/A
Networking Engineer (CCNA)	60%	89%	N/A
Office Manager	62%	87%	N/A
Welding Technician I	88%	80%	N/A
Welding Technician III	100%	100%	N/A
COMMUNITY LEARNING CENTER			
Barbering	100%	100%	100%
Cosmetology/Barbering	100%	92%	100%

UINTAH BASIN	Completion	Placement	Licensure
ROOSEVELT CAMPUS			
Accounting Technician	91%	78%	N/A
Business Administrative Support	75%	89%	N/A
CDL	97%	87%	100%
Medical Assistant	64%	100%	N/A
Nursing Assistant	94%	71%	100%
Pharmacy Technician	82%	73%	100%
Practical Nursing	100%	100%	100%
Welding Advanced Technician	75%	100%	N/A
VERNAL CAMPUS			
Accounting Technician	73%	100%	N/A
Business Administrative Support	78%	94%	N/A
CAD/CAM Machining Technology	33%	100%	N/A
CDL	99%	87%	100%
Heavy Duty Diesel	88%	86%	N/A
Nursing Assistant	63%	100%	100%
Oil and Gas New Hire	100%	100%	N/A
Petroleum Technology	89%	88%	N/A
Safety School	100%	100%	N/A
Welding Advanced Technician	83%	80%	N/A
Well Control Supervisor	100%	100%	N/A

Utah Occupations with the Most Job Openings

March 2015 – March 2016

Occupational Group	Number of Openings	UCAT Program
Office/Administrative Support	36,888	Y
Healthcare	29,795	Y
Production/Manufacturing	18,397	Y
Transportation	18,290	Y
Sales	18,087	Y
Management	15,299	N
Computer/IT	13,837	Y
Business/Financial	11,025	Y
Installation/Maintenance	9,494	Y
Food Preparation/Serving	9,471	Y

Source: Job Orders placed with the Utah Department of Workforce Services

EMPLOYER ADVISORY COMMITTEE ROSTER

AI Automotive	Andrus Trucking	Bair Designs	Blue Jay Café	Campbell Scientific, Inc.
Absolute Air	Any Hour Plumbing	Baker Distributing	Boeing	Canyon View Animal Health Center
Action Target	Apothecary Point	Bank Of Utah	Boeing, Slc - Process Engineering	Canyon View Medical Group
Admiral Plumbing	Apple Village Assisted Living	Barnes Aero	Bohme	Care First Pharmacy
Adobe	Applebees	Barnes Aerospace	Boise Cascade, Ll.c.	Carepoint Network
Advanced Composites	ARC Tech LLC	Barney Trucking	Boomergang Systems	Cargill
Advanced Heating & Air Conditioning	Archie's Barbershop	Bart Morrill Cpa	Borboleta	Carlisle Construction Materials
Advent Intergrated	Architectural Designer (Kirt Built)	Bartlett Construction	Bowman's	Carlisle Syntec
Aerospace Composites Consulting	Arnold Machinery	Basin Clinic	Box Elder County Sheriff's Office	Carquest
American Fork Hospital	Arrant Heating & Air Conditioning	Basin Family Pharmacy	Bradshaw Chevrolet	Carson Plumbing
AFNWC/NWIBF	Art City Family Medical Center	Basin Well Service (Qep)	Brady Trucking	Cascade Windows
Air Cold Supply	ARW Engineers	BC Small Engine Repair	Brahma Group, Inc.	Case, Lowe & Hart Inc
Air Force Research Laboratory (Afrl)	Ashley Region Medical Center	BCH Group	Bridgerland Animal Hospital	Castalite
Aire Serv	Aspen Dental	BD Medical	Bridgerland Dental Supply	Castra-Con Construction
Airforce Advanced Composite Office	Aspen Ridge Of Utah Valley	BDB Electric	Brigham City Fire Department	Cedar City Corp
Airgas USA, LLC	Associated Brigham Contractors Incorporated	Beautylicious	Brinks	Cedar City Hospital
Airgas-Intermountain Inc.	Associated Builders & Contractors, Utah Chapter	Beaver Co Extension	Briskey Mechanical	Cedar City Motor Company
Albertsons	Associated Food Stores Inc	Beehive Broadband	Broken Arrow	Cedar Ridge Family Medicine
ALC Construction	Associated Foods	Bella Salon/Spa	Brown Engineering	Cedat City Auto Repair
All Metals Fabrication	Associated General Contractors	Bella Terra	Budge Clinic	Celeste Atkinson
All Pro Real Estate	ATI Rowley	Bemsc0 Inc.	Burdick Materials	Central Logic
All Terrain Powersports	ATK Aerospace Structures	Benefit Cosmetics	Bureau Of Emergency Medical Services	Central Utah Clinic
Alliance Health	ATK Launch Systems	Bennetts Paint	Burestle Plumbing	Central Utah Tool
Alpen Periodontics & Implant Dentistry	Autocare Body Shop	Berry's Manufacturing	Burrows Heating And Air Conditioning	Central Utah Veterans Home
Alpha Engineering	Autoliv Asp, Inc.	Best Deal Springs, Inc.	Burton Lumber	Central Valley Machine
Alphagraphics	Automated Mechanical	Best HVAC	Busy Busy	Central Valley Medical Center/Nephi
Alpine Family Medicine	Autonomous Solutions Inc.	Better Homes & Gardens	Buxton Masonry	Century Equipment Company
Alpine Pediatrics	Autoworks	Beyond Hair	C.R. England- Global Transportation	Cerrowire
Alpine School Dist.	Autozone	Beyond Spa	C/O Marc Collman, Dds	Certified Tire And Service
Alpine Valley Care Center	Avalon Care Center - Bountiful	Big D Construction	C&D Construction	Chamber Of Commerce
Alstar Electric	Avia Code	Big Sky Plumbing	Cache County Building Dept.	Champion Technology Services, Inc.
Amara Day Spa Salon & Boutique	Awd Sales & Service	Bill Barrett	Cache County Fire District	Chartwell Staff
America First Credit Union	Axtell-Taylor Gm	Bimco, Inc.	Cache County Sheriff's Office	Checker Auto Parts
Anadarko	Bad Boys Auto Body	Bintz Restaurant Supply	Cache County Hospital	Chick-Fil-A
Ancestry.com	Badlands Energy	Bistro 258	Cache Valley Transit District	Children's Corner Pediatric Dentistry
Andrus Transportation	Baer Welding Co.	Bloom Built	Cache Valley Women's Center	Chromalox
		Blue Host		Chrysalis

EMPLOYER ADVISORY COMMITTEE ROSTER

Circle Of Life Women's Center	Crete Carrier	Depot Drug	Dr. Grant Brough, Dds	Fairfield Dental
Cisco Corp.	Crossaction Computer Specialists	Deseret Computer Solutions	Dr. Jared Condie	Falcon's Ledge
Civco Engineering	Crossroads AHEC	Deseret Counseling Services	Dr. Reve Chaston, Dds	Fantastic Sams
Civil Engineering Consultants	Crown Lift Trucks	Desert Mtn. Ranch	Dr. Te	Fanuc
Civil Engineering Technologies	Crowton Dentiistry	Design To Print	Dress Up My Home	Farmington Fire Department
Civilian Member	CRSA	Detroit Diesel	Dropship Commerce	Farr West Family Dental
Ck Massage & Spa	Crystal Clear Plumbing	Detroit Remanufacturing West	Dry Creek Structures	Fastenal
Clayton Hansen Dds	Crystal Inn	Dgi Supply	Dsu Film	Fat Bobs Garage
Clinton City Fire Department	CSI	Diamond Jane's Assisted Living	Duchesne County, Usu Extention	Fed/Ex -Eugene Trucking
Cml Metals	Culinary Craft Catering	Diamond Rental	Ducworks	Felt Auto
Coates Electric & Instrumentation	D C Plumbing	Diamond Valley Fire	Durrant & Slate Plumbing	Felt Auto Parts And Machine Shop
Coldwell Banker	"D" Ole Barbershop	Dick Kearsley Service Center	Dutro Co.	Ferguson Enterprises
Commerce Real Estate Solutions	D&D Machine	Die Hard Creative	Eagle Mountain Fire/Ufa	Fight The New Drug
Community HOAM	Dairyway Transport	Digital Acoustics	East Lake Endodontics	Fingers & Toes
Community Nursing Services	Dale Major Construction	Dinosaurland Pediatrics	Eclipse Composites Engineering	First Choice Home Health & Hospice
Compass Minerals	Dan Crozier Construction	Direct Communications	Ed Kenley Ford	First Timers Enterprises
Conagra Foods	Dark Horse Dental Studio	Discount Pharmacy	Edc Utah	Five9's Communications
Concepts To Construction, Llc	Darrin's Custom Cabinets	Discount Tires	Edu Utah	Flair Designs
Conservice	Dats Trucking	Disney	Edgemont Service	Flowserve
Construction Steel	Dave Stuart Model Aircraft	Dixie Heating And Air	Elearning Brothers	Fluid
Contractors Supply	David L. Jensen & Associates	Dixie Orthopedics	Electrical Wholesale Supply	Flying J
Control Systems Integrators	David White Designs	Dixie Regional Medical Center	Elkay	Food Services Of America
Cookie Cutters	Davis - Iga Pharmacy - Roosevelt	Dollar Cuts	Elkridge Engineering	Fourth Gear
Coral Desert Ortho	Davis Chamber Of Commerce	Dollar Cuts Salon Elite	Elvera's Hair And Nail Salon	Foxi Hair Extensions
Coral Desert Rehabilitation	Davis Chrysler/Dodge	Don C. Fisher Construction Inc.	Embellish Salon	Foxridger Development
Corinna Anderson Interior Designer	Davis County Sheriff's Office	Don's Auto Body & Glass	Emergency Physicians Integrated Care Llc	Francis Dentistry
Cornerstone Machine	Davis Hospital & Medical Center	Dorrrity Digital Design	EMS	Franklin Covey
Cottage Dental	Davis School District	DOT	Ensign Services	Franklin Group Real Estate Company
Cottage Glen Premier Assisted Living	Dazzlin Digits	Doterra	Enterprise Fire Dept	Franklin Medical
Country Cabinets	Dean Foods	Double C Construction, Inc.	Enve Composites	Freeform Polymers
Cowboy Red Transport	Decker Plumbing Supply	Double S Plumbing	Era Skyline Real Estate	Fremont High School
Craig's Cuts	Decker's Plumbing	Doug Smith Chevrolet	Ers (Electronic Recycling Solutions)	Fresenius
Crazy Beautiful	Deli Wheels	Doug Smith Dodge	Evolution Machining Llc	Fresh Market
Creative Media Group	Dental Practice	Dps Skis	Excel Heating	Funder Welding And Design
Crescent Point	Dental Temps	Dr. Andrew Fenton	Exelis	G & L Electric Services, Inc.
Crestwood Care Center	Department Of Defense	Dr. Brad Holmes	Expressions Salon	G And S Sales
Crestwood Nursing And Rehab	Department Of Workforce Services	Dr. Don Gifford		

EMPLOYER ADVISORY COMMITTEE ROSTER

GA-ASI	Harmon's	Horrocks Engineering	Intermountain Lift, Inc.	K Bell Plumbing And Heating
GAF	Harmon's Bakery	Hot Shot Manufacturing	Intermountain Medical Center	K-Tech Plumbing
Garden Day Spa And Salon	Harmon's Pharmacy (Ogden And Roy)	Hughes & Associates	Intermountain Medical Group	Kamatsu
Gardner Engineering	Harris Rebar	Hughes General Contractors	Intermountain Staffing	Kapstone (Longview) Paper
Gases Plus Norco	Hartwig	Hunga-Munga Sales	Internal Medicine, Ihc	Kaysville Fire Department
Gcr Tires & Service	Hawk Electric	Hunter Engineering	Iron County Home Health Agency	KCC Manufacturing
Gearmaster	Hca Healthcare	Icon Health And Fitness	Iron County Rehabilitation	Kellie's Co. Salon
Gecko Software, Inc.	Headquarters Salon	Ideal Machine	Iron County School District	Kellogg
Geneva Rock	Health Clinics Of Utah	IHC American Fork	Iron County Sheriff's Office/Ems	Ken Bettridge Distributing
Geneva Rock Products	Health Equity	IHC Clinic - North Ogden	IRS	Ken Garff Chevrolet
Genpak Corp	Health Rejuvenation Institute	IHC Instacare, Tooele	Island View Plumbing	Ken Garff Nissan Riverdale
George E Wahlen Veterans Home	Healthcare For Women, Tooele, Utah	IHC Internal Medicine	Itl Tanklines	Kent's Pharmacy
Gg Beauty	Hearts For Hospice	IHC Pulmonary	Itt Exelis	Kenworth
Glade Perry Construction	Heaton Tire And Wheel	IHC Urology	Ivins City Fire	Kenworth Sales
Glo Services, Llc	Heb Solutions	IHC - Insurance	Izeni	Kevin Barkdull Plumbing & Heating Inc.
Global Realty Marketing	Heirloom Restaurant Group	IHC - DRMC	Jacer	
Glymed Plus	Herff Jones	IHC - Family Practice	Jack B. Parson Company	Kilgore Companies
Go Engineer	Heritage Health Care Center	IHC - River Road	Jack's Tire & Oil	Kindred Health Care
Godfrey Trucking	Heritage Park Care Center	IHC - Sunset Family Practice	Jacki's Salon	Kirkham Motorsports
Gold Cross Ambulance	Herman Hughes Gc Inc	Illuminate Billing	Jacobsen Construction	Klm Woodworks, Llc
Gold Cross Services, Inc.	Hexcel	Image Skin Care	Janicki Industries, Inc.	Klune Industries
Golden Corral & Jbs Swift	Hhi Corporation	Import Auto	Jbs Swift Company	Kneaders
Good Shepard Home Care	Hideout Steakhouse	Imsar, Llc	Jbt Aerotech	Knight Electric Inc
Good Year Tire & Auto	High Stakes Trucking	Independent Worker	JC Auto	Knight Transportation
Goodman Distribution, Inc.	Hill Air Force Base	Info Trax Systems	JCS	Knighton Plumbing
Grand America Hotel	Hill Air Force Base Advanced Composites	Inked Graphics	JD Machine	Komatsu Equipment Company
Great Basin Engineering	Hill Air Force Base Oo-Alc/Manlbm	Innovative Precision, Llc	Jiffy Lube	Koskan Real Estate
Great Clips	Hobblecreek Dental	Inovar	Johnstone Supply	Kozco Mechanical
Great Salt Lake Minerals	Hogan & Associates Construction	Insurance Network	Jones & Demille Engineering	L-3 Communications
Great Western Supply	Hollyfrontier Refining Co.	Intermountain Budge Clinic	Jones Dental Care	L.W. Miller
Griffin Fast Lube, Llc	Home Depot	Intermountain Central Orem Clinic	Jones Enterprises Utah	L&L Motors
Grifol's Biomat	Home Salon	Intermountain Dixon Health Center	Jones Shirts & Signs	La Belle Vie Salon + Spa
GSC	Home Salon And Young Nails	Intermountain Farmers	Jordan Ridge Family Medicine	Lakeview Family Medicine
GSL Electric	Homebased Realtors	Intermountain Health Care - Creekside Clinic	JSW Enterprises LLC	Lakeview Hospital
Gunnerson Dental	Honnen	Intermountain Healthcare	Juniper Systems	Landmark Companies Inc.
H&E Equipment	Horizon Home Health	Intermountain LDS Hospital	Just Right Heating And Cooling LLC	Larry H. Miller
Happy Sumo			Jvrmc Cath Lab	Lavish Salon

EMPLOYER ADVISORY COMMITTEE ROSTER

Layton City Fire Department	Logan Regional Hospital	Mighty Clever	Nammo Composite Solutions	Oldcastle Mountain West Division
Layton Cycle And Sports	Lone Peak Hospital	Mike Bachman Plumbing	NAPA	Oo-Alc Hill Afb
Layton Family Medicine	Lucky Slice Pizza	Mike Hale Acura	New Grains Bakery	Op Tanks
Layton Smiles	Lush Nail Lounge	Milieu Design	New Image Day Spa	Orbit Irrigation Products, Inc.
LDS Church	LV Swiss	Miller Electric Mfg Co.	New West Machine Tool Technologies	Orbital ATK
LDS Employment Resource Services	Lynn Woodward Electric	Miller's Autobody	Newfield Exploration	Orchard Park Care Center
LDS Employment/Development & Counseling Services	Mac Cool's Public House	Molina Medical	Newgrains Bakery	Orem Comm. Hospital, Hc
Leanwerks	Macey's	Monarch Dental	Newport Tool	Orem Rehabilitation And Skilled Nursing
Leavitt Insurance Group	Machinery Consultants Inc.	Moonlight Diesel	Nexxus	Ortho Tech Lab
Leavitt Software Solutions	Maderas Smokehouse	Morris Electric Inc.	Nicholas	Paragon Automation
Lee's Marketplace	Mainstreet Auto	Mount Olympus Compounding	Nielsen Heating & Cooling Inc.	Parke Cox
Lee's Plumbing Inc.	Mane Events	Mountain America Credit Union	Nixon & Nixon	Parker Hannifin Corporation
Leeds/Hurricane Fire Dept.	Manor Care Center	Mountain Point Hospital	No Limits Studio	Parker Real Estate
Legacy Pediatric Dentistry	Mapleton Fire Department	Mountain Point Medical Center	North Cache Veterinary Service	Parkway Health Center
Legacy Village Of Layton	Marietti Electric	Mountain Star/Hca	North Davis Fire Department	Parkway Motor Company
Legrand Johnson Construction Co.	Marion's	Mountain States Plumbing Supply	North Davis Sewer District	Patterson Dental Company
Lehi City Fire Department	Mark A Newt Appliance Specialists	Mountain States Steel	North Fork Fire Department	Pc Care Support
Leon Ross Drilling	Marketing Ai	Mountain View Health Care	North Logan Fire Chief	Pce Pacific Inc
Letterpress Software, Inc.	Marriott Hotel	Mountain View Health Services	North Logan Fire Department	Pediatric Dental Care - Spanish Fork
Lewiston State Bank	Matt Betts Trucking	Mountain View Hospital	North Valley Orthopedics	Personal Fashion Consultant
Lifecare Center	Maurices	Mountain West Architects	Northern Construction	Petals & Promises
Lifetime Products, Inc.	Maverik Builders	Mountain West Ear, Nose & Throat	Nucor Building Systems	Pete Martin Drilling
Lightning Kite	MBM	Mountain West Medical Center	O'Reilly Auto	Peterbilt
Lincoln Electric Company-District Office	Mcgee Company	Mountain West Plumbing	Oakridge Dental	Peterson Plumbing Supply
Lindsey Welding	Mckay Dee Hospital Pharmacy	Mountainland Supply	Office Of Dr. Randell Capener	Peterson, Inc
Lingotek	Mckay-Dee Hospital	Mountainstar Health	Office Of Dr. Travis Baldwin	Phillips Heavy Equipment Services
Litehouse	Mckell Design	Mountainstar Pediatrics	Ogden Air Logistics Center	Pine View Transitional Rehab
Little Lube And Tire	Mckinnon-Mulherin, Inc.	Mountainview Consulting, Inc	Ogden Blue	Pinnacle Pain Management
Lkq Auto Parts Of Utah	Mcmullan Trucking	MRW Design	Ogden City Schools	Pizza Pie Café
Lockheed Martin Aeronautics Company	MDW Electric	MSC Aerospace/Metalcraft	Ogden Clinic	Platt Electric Supply
Logan Canyon Dental	Medical Arts Clinic	Mt. Sterling Construction	Ogden Country Club	Pluralsight
Logan City Police Department	Medicine Shoppe Pharmacy	Mtn. West Foot And Ankle Clinic	Ogden Eccles Conference Center	Poco Loco Swim Shop
Logan Coach	Medquest	Murdock Hyundai	Ogden Regional Medical Center	Polaris
Logan Fire Department	Meineke Car Care Center	My Barber	Ogden Weber Applied Technology College	Polished Pinkies
Logan Nursing And Rehab	Mental Health Clinic	My Style Photo	Okland Construction	Ppm
	Metropolitan Salon	Myer's Mortuary	Old Navy	Praxair
	Midtown Community Health Center	Nail Crush		

EMPLOYER ADVISORY COMMITTEE ROSTER

Pre-Corp	Randi's Nails	Roosevelt Vision	Siemens Industry Inc	Spinal Interventions
Precision Medical Pharmacy	Ray Citte Rv	Roseman University/Walgreens/ Uvrnc	Sierra Dental	Split Mountain Truck Center
Precision Plumbing	Rc Welding	Rosenburg & Assoc.	Sierra Homes	Sports Molding, Inc. (Smi)
Premiere Family Medical	Rcok Exotica	RR Donnelley	Silver Clipper Salon	Sportsman
Premium Meats	Re/Max	Rubio's	Silver Stock Construction	Spyhop Productions
Presto Products	Ready Technologies	Rue 21	Simplifile	St George Rehabilitation
Pride Graphics	Real Estate Options Plus	Rupp Construction Company	Simplure, LLC	St. George Discount Pharmacy
Primary Children's Medical Center	Real Plumbing, Heating And Air	Rush Truck Center	Six States Distributors, Inc.	St. George Fire
Primary Children's Pediatric Education Services	Red Gravy	S & B Auto Color & Supply	Skf Polyseal	St. George Steel
Prime Residential / Longhurst Mortgage	Red Rock Pediatrics	S&S Precision	Small Business Dc	St. Jude Medical, Inc.
Pro Fab & Welding	Reed's Precision Machine Shop	SAE	SME Steel	Staker Parson Companies
Proactive Network Management Corp.	Regis Corporation	Salon & Spa Fifth Avenue	Smead Manufacturing	Star Sign And Banner
Probst Electric	Reliable Networks	Salon 21	Smedley And Associates	Starwest Computers
Professional Plaza	Renown Dairy	Salon 56	Smith Rexall Drug	State Of Utah
Progressive Construction Systems	Resource Manufacturing Co.	Salon Belle Rouge	Smith Stone Supply	Stepup Accounting & Tax
Promera Sports	Revere Health	Salon Bleu	Smith's	Steton Technologies
Promold	Revere Health - Women's Center	Salon Centric	Smith's Food And Drug	Stewart Title Company
Provide Sensors	Rhett's Trucking	Salon Fringe	Smith's Marketplace	Stone Security
Provo City	Rich County Ambulance	Salon Satori	Smith's Pharmacy	Stonehenge Of American Fork
Provo City Fire Department	Rich County Sheriff's Office	Salt Creek Plumbing	Smithfield Farms	Stonehenge Of Ogden
Provo Health & Rehab	Rich Electric	Scholzen Products	Smokehouse BBQ	Strata Networks
Provo Nursing And Rehab	Richards Sheet Metal	Schreiber Foods	Snap-On Tools	Streamline Plastics
Provo School District	Richmond Fire And Rescue Department	Sci Automation	Snow Canyon Clinic	Strive
Pscipco	Rite-Aid Pharmacy	Scott Heating And Air Inc	Snow Electric	Structural Steel And Plate Fabrication
Pure Power	Riverwoods Mill	Scott James Plumbing & Heating	Snowbasin Resort	Sunrise Engineering
Putnam Plumbing	Rivetel	Scott Willey Electric	Solutionstream	Sunroc
Qnergy	RJP Construction	Seasons Salon And Day Spa	South Davis Community Hospital	Sunroc Concrete
Quarksoft USA	RI Wadsworth	Sego Lily Day Spa	South Davis Home Health & Hospice	Sunshine Terrace
R & O Construction	Robert W. Speirs Plumbing Inc.	Serengetti Salon	South Davis Metro Fire Agency	Superior Service
R-W Auto	Rock Canyon Pharmacy	Shades Diesel	Southern Utah University	Surface Medical Spa
R.W. Jones Trucking	Rocketmade	Shamrock Plumbing	Southern Utah Veterans Home	Surge Electric
Rafter 3 Bars	Rockwell, Inc	Sharelle Mcclellan Salon	Southland Electric	Suu Business Resource Center
Rainmedia	Rocky Mountain Care	Sharp Transportation	Southwick Plumbing	SUU Center For Rural Health
Ram Company	Rocky Mountain Care - Willow Springs	Shear Dreams	Spanish Fork Plumbing	Suu Construction Management
Ramco	Rocky Mountain Care Tooele	Shupe Electric	Spanish Fork Clinic	Swift Transportation
	Rocky Mountain Consulting	Shurtleff & Associates	Specialty Hospital Of Utah	Swire Coca-Cola
			Speirs Plumbing	

EMPLOYER ADVISORY COMMITTEE ROSTER

Swr Nurse Consultant	Tona Sushi Bar & Grill	United Team Mechanical	Vcbo Architecture	Whiteclouds
Syracuse Fire Department	Tonaquint Data Center	University Hospital	Velocity Webworks	Whitewater, Inc.
Sysco Intermountain Food Service	Tooele County Health Department	US Foods	Venture Me	Whiting Construction
T.D. Williamson	Tooele Medical Group	US Synthetic	Verio	Wiggins And Company
Tanner Clinic	Topham's Tiny Tots Care Center	USU Police	Verisage	Wilkinson Electric
Targa Media, Inc.	Total Quality Systems	USU Student Health & Wellness	Vernon Company	Williams International
Target Pharmacy	Trampololne Parks, Llc	Utah Community Credit Union	Vexxel/Hypercomp	Willowbrook Cabinet, Inc.
Taylor Electric	Trane	Utah County Health Department	Virocon	Wilson Electronics
Tcr Composites	Trapnell Orthodontics (Springville Branch)	Utah Data Recovery	VitalSMARTS	Winn-Marion
Tek Systems	Trend Interiors	Utah Department Of Workforce Services	Vpi Pcb Design	Wl Plastics
Telos	Tri-Phase Electric	Utah Electrical Jatc	VTV	Wolford Auto Body
Temperature Control	Trichology	Utah Elegant Glass Nails	Wadman Corp	Wood-N-Design
Testout	Triple S Polaris	Utah Eye Centers	Wadsworth Brothers Construction	Workfront
Texas Roadhouse	Triple T Heating	Utah Highway Patrol	Wal-Mart	Workmed-Spanish Fork
Thanksgiving Point Dental	Tristate Mechanical	Utah Kidney	Walgreens	WSU Construction Management
Thanksgiving Point Restaurants	Tucanos	Utah LTAP	Walker Plumbing	WSU Dental Hygiene
Thatcher Brook	Tunex Springville	Utah Manufacturing Association	Warner Truck Centers	WSU School Of Nursing
The Brulee Catering	U Hospital Business Services	Utah Neurological Clinic	Wasatch Machine	WSU/SUU Cooperative
The Buckle	Ua Local 140	Utah Nursing Assistant Registry	Wasatch Mountain Electric	WW Clyde
The Design Guild	UBATC	Utah Search & Rescue	Wasatch Pharmacy	Wyatt's Barber Shop
The Dirt Lab	Udells	Utah Sheet Metal Education Trust	Washington City Fire	Xactware
The Quarry	UDOT	Utah State Developmental Center	Washington County School District	Yesco
The Service Bureau	UFA	Utah State University	Waste Management	Yesco Electronics
The Toolroom, Inc.	Uhin	Utah Trucking Association	Wayfair	Young Automotive Group
The Villa	Uintah Basin Medical Center	Utah Valley Convention Center	Weber County Emisions	Young Buick Gmc
Therapeutix Mind And Body	Uintah Basin Rehab & Senior Villa	Utah Valley Pediatrics	Weber School District	Young Electric Sign Company
Thermo Fisher Scientific	Uintah Care Center	Utah Valley Rehab And Health Care Of Provo	Weber State University	Young Kia
Thomas Arts	Uintah Engineering & Land Survey	Utah Valley University	Weller Truck Parts, Llc	Young Nails
Thomas Cuisine Management	Uintah School District	Utahsites.Com	Wellsville Fire Department	Your Employment Solutions
Thompson Orthodontics	UIS	UTE Tribe	Wencor Group	Zigg Design
Thrive Medical	UK2 Group - Westhost	Utility Trailer Manufacturing	West Motor Company, Inc.	Zions Bank
Timberline Engineering & Land Survey	Ultradent	UVRMC	Westec Electric	
Timpanogos Regional Hospital	Unicity International	Valley Implement	Western Agricultural Credit	
Timpview Pharmacy/lhc	Unisys	Valley Plumbing	Western Zirconium	
Todd Machinery	United States Air Force	Valley View Medical Center	Westland Hyundai	
Told Plumbing	United States Welding	Valyn's Salon	Wheeler Hydraulics And Machinery	
			Whitaker Construction	

CUSTOM FIT COMPANIES

- 11000 Lakes Photography
360 Detailing & Wash
3M Law
3rd Gen Machine
5N Plus Semiconductors
7 Twenty Second
A & F Electric
A Garage Shop
A J Construction
A Mane Attraction LLC
A+ Benefits
A-1 Appliance Repair Specialists
ABC
Absolute Air Heating & Air Conditioning Inc
Abstract Speedway
ACAD - Advanced Construction & Design
Academica West LLC
Accounting Alternatives
Accurate Mobil Mix Concrete
ACM Electric
Action Photo Tours
Action Target
Adair Plumbing & Construction Inc
Adams & Petersen CPAs
Adams Tile
Adamson JL Construction
Adapt Consulting, LLC
Adilas LLC
Adonia Yachts
Adrenaline Fitness LLC dba CrossFit Moab
Adrien Jones Landscaping Inc
Advanced Bodyworks and Massage
Advanced Custom Construction Inc
Advanced Fire Protection of Utah
Advanced Metal Products
AE Control
Aerial Dynamic Systems
Affinity Auto Sales & Service
AGS Automotive
Alan Mathena Construction Inc
- Albion Laboratories, Inc.
Alex Miesner Construction LLC
All Of Me Literacy
All Pro Electric Inc
All Star Excavating, LLC
All Wells Drilling LLC
Allans Welding
Allen Rock
Alliance Medical Administration
Allred & Allred
Alvey Development
Amberwing Art
American Gilsonite
American National Insurance
American Nutrition
American Prestige Roofing
American Secure Title
American Traffic Service, LLC
Americold
AMPAC Specialty Chemicals
Amwest Construction
Anadarko
Ancestry.com Operations, Inc.
Ancient Painting
Anderson Heating & A/C Refrigeration
Andys Lube and Service LLC
Angela Murray Personal Training & Life Coaching
Angie Blackburn Photography
Anji Smith LLC
Anna Oakden Photography
Annette Judd - Realtor
Any Hour Electric, Plumbing, Heating, and Air Conditioning
Apogee
Applied Composite Technology
Aquamira Technologies, Inc.
Aquatherm
Aramark
Arch Coal Dugout Mine
ARCH Sheet Metal Inc.
Aribex
- Arnolds Hardwood Flooring Inc
Arrowhead Development Corp
Artic Air of Southern Utah
Artisan Jewelers
Arts Unlimited
Asante Foundation
Ash Grove Cement
Ashdown Brothers Construction
Ashdown Heating & A/C Inc
Ashley Astle Art
Ashley Regional Medical Center
Ashton General Contractors, Inc.
Aspen Mill
Assurance
Astle Art
At Your Door Veterinary Service
Atkore Plastic Pipe
ATL Technology
Atomic Jolt
ATV & Jeep Adventures
Audio Flood
Authority Heating and Cooling
Auto Works Inc.
Autoliv ASP, Inc.-Brigham City
Autoliv ASP, Inc.-Promontory
Autoliv ASP, Inc.-Tremonton
Autoliv Module Facility
Autoliv OTC
Automated Mechanical
Automation Products Group, INC
Autonomous Solutions
AutoSource Motors
A-Zion Mechanical
Aztec Heating & Air
B & L Fitness LLC dba CrossFit Cedar City
B & S Drywall
B and R Auto Repair
B Fitz, Inc.
B Mortensen Plastering
B Van Wagon Electric
BA Robinson & Sons Construction
Bach Corp.
- Back to Perfection Flood and Fire
Badlands Fabrication
Baer Welding
Bailey Farms International
Baker Chiropractic & Accident Rehabilitation
Balanced Spinal Care
Bambrough Studios
Bangerter Homes
Bangerter Homes of Southern Utah
Bangerter, Lund & Associates
Bar Dot Bar Auctions
Bar M Plumbing
Barbara Marchant Art
Barbuild
Barclay Excavating
Barnes Aerospace
Barnes Bullets
Barney Brothers Electric
Barney Trucking
Barnhart Studio
Bart Built Cabinetry & Millwork
Basin I & E
Basin Western Inc
Bassett Homes
Bates Electric LLC
BBH Consulting Inc
Beacham Enterprises
Beans & Bites
Bear Paw Products
Bear Paw Resort
Beard Painting, Inc.
Beatty Excavating
Beaver Ambulance
Beaver Creek Lodge
Beaver Valley Hospital
Becks Auto
Bedrock Creations
Beehive Broadband
Beehive Home of Layton
BeeHive Homes of Perry
Bell Ventures Inc DBA Pillar to Post
- Home Inspections SW
Ben Batty PC
Ben Hulet Construction
Benjamin Anderson Art
Benson Trucking
Berrys Manufacturing of Utah Inc.
Beryl Valley Outdoors
Best Friends Animal Society
Best Western Red Hills
Better Body Foods
Better Roofing Systems
Big 4 Development
Big Automation Inc.
Big D Construction - Salt Lake City
Big D Construction - South Ogden
Big Dons Pizza
Big Kahuna Native Naturals Inc
Big O Tires
Big O Tires - Bluff
Big O Tires - BLVD.
Big O Tires - Sunset
Big Rock Homes, LLC
Big Trees Nursery
BJs Tire Pros
Black Box Engineering - CAID Industries
Black Sands Performance LLC
Black Smith International
Blackburn & Associates
Blackmore Construction
Blane Jackson DDS
BlenderBottle
Blendtec
Blissful Living by Saskia
Blue Diamond Electric
Blue Hill Investment
Blue Mountain Meats Food Service
Blue Wing Resources
Bob Barker Company
Bob Holliday Construction
Bobben Enterprises
Body Talk
Bolinder Resources

CUSTOM FIT COMPANIES

Boman Kemp	C & E Fence LLC	Castrol Lube Pros	CK Construction	Corene Canaan
Bonneville School of Sailing	C & J Energy Services (CJES)	Catalyst Property Management	Clarks Home Fire Safety	Cornell Orton Construction Inc
Bonnie Cazier Art	C Martin Company	CB Framing LLC	Classic Motor	Cornerstone Healthcare
Boostability	C&H Consulting	CBC Oil and Wash, Inc.	Clean Masters & Sons, Inc.	Coughlin Company
Bosen Realty	Cache Valley Bee Supply	CD Consulting Engineers Inc	Cleasby Manufacturing	Cove Mountain Dirt Worx
Boss Brows	Cache Valley Electric	CD Electric	Cliff Stubbs Concrete	Covey Management
Boulder Innovations	Cache Valley Hospital	CEBA	Clinton Housley Construction	Coxey Construction & Remodeling, Inc.
Bountiful Tires & Service	Cacique Inc.	Cedar City Economic Development	Closet Creations	Cozzens Cabinets
Bourns	Cactus D Lites	Cedar Creek Landscaping	Clyde Companies Inc.	Craig White Construction
Bradshaw Chevrolet	Caisson Laboratories, Inc.	Cedar Custom Concrete	CMD Contracting	Crawford Custom Builders
Bradshaw Electric	Caldera Engineering	Cedar Plumbing	Coates Ele	Craythorne Inc
Bradys Drafting & Design	Cameron's Excavating, Inc.	Cedar Ridge Properties LLC	Cold Front Heating & Cooling	Create Vitality
Brenda Nelson Realtor	Camp Chef	Cedar Valley HVAC Inc	Coldsweep, Inc.	Creative Construction
Brendell Manufacturing	Campbell Scientific	Central Bank	Coldwell Banker Advantage	Crescent Hotels & Resorts
Brent Alvey Plumbing	CampSaver	Central Valley Machine	Colfs Heating and Air Conditioning	CRI Inc/Greenworks Construction Inc
Brent Baxter Construction Inc	Canyon Collection	Central Valley Mechanical	Color Country Automotive	CRM & Sons Inc
Brent G Theobald Construction	Canyon Crest Contractors	Century 21 Prestige Realty	Color Country Massage	CS Mining
Brents Interiors	Canyon Electric Corporation	Cerrowire LLC	Color Country Painting	CS Tops Inc.
Brett Walker Plumbing, LLC	Canyon Kitchen & Bath	Certified Insurance Services	Color Country Tires Inc DBA Big O	CSB Nutrition Corporation
Brian Auto	Canyon Ridge Chiropractic Inc	Chambers Electric Inc	Color Sky Gypsy	CT Automotive
Brian Geer Development Inc.	Canyon Voyages	Chameleon LLC	Combe Electric Inc.	CTI Construction
Brian Head Public Safety	Canyonside Construction	Chapman Construction	Comfort Inn Suites	Custom Electrical Service
Brian Passey Writer	Capstone Countertop Maintenance LLC	Charles Holston Inc.	Comfort Specialist, LLC	Custom Fence
Bright Starz	Capstone Nutrition	Charron Heating & A/C	Community First Utah LLC	Custom Mechanical Design
Bringhurst Plumbing and Heating, Inc.	Cargill Salt	Chatterton, Inc.	Competitive Excavation	Custom Payroll and Accounting
Briskey Mechanical Inc	Carl Lefevre Constuction	Chevron USA Inc	Compressor Systems Inc.	Custom Sounds & Wiring, Inc.
Bristlecone Building Company	Carla Gregory	ChocoLeans	ConAgra Foods	Custom Store Fixtures
Broken Arrow	Carlisle-Syntec	Choice Builders	Concrete Innovations	Cutting Edge Precision, LLC
Bruce Thompson Plumbing	Carol Craig Art	Chris Lochhead Construction Safety Consultant	Concrete Specialties Inc	Czarnowski
Bryan L. Adams	Carol Johansen Fine Art	Christensen Arms	ConocoPhillips	D & D Electric
BT Pearson	Caroline Beaupre	Christiansen Furniture	Consolidated Container Company	D and A McRae Transportation - Roosevelt
Buffalo Bros Tire	Carolyns Cruise and Travel	Christy Stone - Reiki Practioneer	Construction All-STARs	D and A Transportation Inc - Sigurd
Building Concepts of Southern Utah	Carson Plumbing & Mechanical	Chromalox	Construction Monitor	D B Keisel Construction LLC
Bullfrog Spas	Caryls Country Curls	Chrysalis	Construction Services	D P Curtis Trucking
Bulloch Dirt Works	Casey Andersons Quality Construction	Church Construction	Construction Steel Inc.	D.C. Painting
Bulls Eye Pest Control	Caspers Ice Cream	Circle A Builders	Continuum iCare	D.E.B. Travel
Bundy Steel Contractors	Cassity Implants and Periodontics	Circle D Services	Cooper Capital Corporation	Dailey Builders Inc
Burch Creek Animal Hospital	Castle Country Radio	CIS Professional Land Survey	Cooper Sleep Cockpits	Dale M. Rasmussen Inc
Buttars Tractor	Castle Grey Stone	City Design Builder	Coppertop Metals	Dan Cazier Construction
BWAY Corporation	Castle Valley Mining, LLC	City Wide Home Loans	Coral Canyon Builders LLC	Dancing Daisies Floral
Bywater Heating	Castlerock Printing	CJ Electrical	Coral Desert Rehab	Danny Campbell Construction
C & A Plumbing	Castleview Hospital			

CUSTOM FIT COMPANIES

Danny Leavitt Construction	Diamond Air and Heat	Edge Trucking	Fairfield Village of Layton	Gardner Dental
Dannys Drywall	Diamond K Engineering & Grading	Edward Oak	Family Dollar	Garfield County Office of Tourism
Dansie Dental	Digi International	Eileen Brown Fine Art	Family Health & Wellness	Garys Remodeling
Daphne Schroth Fine Art	Direct Financial Solutions	E-LaRue, LLC	Family Support Center of Southwestern Utah	GCR Tires & Services
Darko Technologies	Discount Tire	Elayne Pearson	Far West Construction	Geary Electric
Dartside	Diverse Repair & Maintenance	Electrical Consultants, Inc.	Farm Bureau Financial Services	GEM Building Systems
Dave Piper Ceramic Tile & Marble	Dixie Power	Electrical Tech	Faus Glass	Genco Hershey Ogden
Daves Electric	Dixieline Contracting	Electronic Recycling Solutions	Fierce Firearms	General Growth Newgate Mall
David G McMillan DDS PC	Dixon Dawg House	Eliason Diesel	Fine Art by Susan Scott	Generation Labs
David J. West Gallery	DK Bundy Excavating	Elise Ranzenberger Art	Firestack Consulting	Generation Systems Inc
Davis Hospital & Medical Center	Dompier Construction Inc.	Elite Builders LLC	Firestone Complete Auto Care	Genes OK Tires
Days Inn	doTERRA	ELITechGroup Inc.	FirstMed	Genes Painting
Deann Rex Photo	Double D Tree Service	Elkay West Company	Fit Motherhood	Geneva Rock
Decker Construction Inc	Dougs Master Auto Care	Elmore Chiropractic & Nutrition, LC	Flotek Pump Services	Genpak LLC
Dee C Marsh Construction	DP Steel Erector	Elwood Staffing	Flowserve	Get A Camera
Deep Desert Designs	DPA Heating and Air Conditioning, LLC	Embroidery and Promotional Products	Fluor	Gibbs Smith, Publisher
Dees Bookkeeping & Tax Service	DPIT Consulting	Emergency Zone	Forced Aire	Giddings Consulting
Deeter Accounting	Dr Fannesbeck DDS PLLC	Emery Telcom	Foreland Refining Corp	Giles Dairy Service
Defay Orthodontics	Dr. Jonathan C Romney	Emery Tire and Auto	Forever Resorts @ Bryce Lodge Canyon	GL Enterprises
DeJarnatt Electric LLC	Dr. Jorge Zapata DDS	EMS Enterprises	Forsyth Heating & A/C	Glaziers Inc
Delta Disaster Services of Southern Utah	DRC Enterprises	Encompass Engineering	Forte Strong	Glines Construction Inc
Delta Disaster Services of Southern Utah - Cedar City	Dreaming Dog Studio	Encompass Home Health & Hospice	ForthGear, Inc.	Global Health Industries
Delta Stone Products	Dreams Unlimited	Energy Fuels Resources	Fotoworx	Gold Cross Ambulance
Dennis Davis Masonry	Drive and Buy	Energy Tech Innovations LLC	Four Corners Adventures	Gold Tip
Dennis Garr Construction, Inc.	DRM Cinderellas	Enervest Operating	Four Post Investments LLC	Golden Spike Electric
Dennys	Ducworks	Eno Family Gallery	Fowers Service Center	Golden Spike Equipment
Dennys Wigwam	Duncan Aviation	Ensign Staffing Inc.	Foxs Friendly Automotive	Good Ole Boys
Dental Centers of St. George	Dunn Law Firm	Enve Composites	Free Form Polymers	Gossner Foods
Desert Door Inc.	DuPont Holographics Inc.	Envision Mechanical	Freedom Ford	Gouldings Lodge
Desert Hills Construction, LLC	Dustless Technologies	EP Energy	Freedom Real Estate	GoZunder LLC
Desert Rose Art Studio & Gallery	Dutro Co	Equity Real Estate	Freestone Electric	Granite Connection LLC
Desert Rose Inn	Dynamic Electric Inc.	ERA Realty Center Inc	Fresenius	Grass Creek Construction
Desert Sky Homes, LLC	Dynamic Screening Solutions Inc.	ERA Skyline Real Estate	Frontier Overhead Door	Great 8 Global LLC
Desert Star Café	E A Motor Sports	Evans Construction Service	Frontier Scientific	Great Basin Industrial, LLC
Desert Valley Concrete	Eagle Environmental, Inc.	Evolution Machine Shop	Frontline Concrete Pumping	Great Salt Lake Minerals Corporation
Designer Furniture Gallery	EarthSoft	Ewing Design	Funder Welding & Design	Green River Stone Co
Designer Stone & Masonry	Easy Shop Insurance	Excel Heating and Air Conditioning	Fusion Imaging	Greg Anderson Construction Inc.
Detroit Diesel	Echelon Contracting	EZ Roll-Out Solutions	Fusion Specialty Pharmacy	Griffs Garage
Development Solutions Group	Ed Kenley Ford	Fabral	Futura Industries	GS Electric Inc.
Deviant Tattoos	Eddie Griffith - Self Proprietor Artist	Fabrizio Transport Inc	GAF	GSC
DG Ventures	Eddie Lopez Construction	Fagen, Inc.	Gage Refrigeration	Gunnison Valley Hospital
	Edgar Custom Painting, Inc	Fahrenkamp Inc		Guns and Hoses

CUSTOM FIT COMPANIES

G-West Builders	High Desert Excavating Inc	i-Four Media	J & A Construction	JM Mechanical
H & M Electric	High Voltage Inc	Illuminated Moments	J & E Property Management & Sales LLC	Jodi McGregor Fine Art
H A Fabricators	Hillbilly Mill and Pipe Pressing	Illumisource/iTech Electric	J Kirk Richards Fine Art	Johansen Heating & Air
H.E. Davis Family Limited Partnership	Hillside Miniature Golf	IM Flash Technologies	J R S Repair	John A Carlisle Photography
H1 Auto Services	Hogan & Associates Construction	Image Contracting, LLC	J&I Asphalt LLC	Johns Trucking
Habitat for Humanity of Southwest Utah	Holbrook Asphalt Co	Imagine Learning	J2 Construction LLC	Johnson Electric
Hadley Electric	Holbrook Service Company - Roy	IMDS - Coors Tek Medical	JA Taylor & Associates	Jomark Excavating
Hahn Electrical Services Inc	Holbrook Service LLC	Imlay Plumbing	JAB Services	Jon Crockett Construction LLC
Hair Design	Holiday Inn Express	Impact Health and Fitness	Jack Fisher Homes	Jon Saunders Construction
Hair Zone Barbers & Beauty	HollyFrontier	Import Auto Clinic	Jackson Excavation Inc	Jon Wheelwright, DPT
Hales Sand & Gravel	Hollywood Video	IMS Masonry	Jackson Plumbing & Heating	Jones and DeMille Engineering
Half Dental	HomeSmart Advantage - Orem	IMSAR	Jacob Holm Therapy Inc	Jones Construction
Halladay Plumbing Inc	HomeSmart Advantage - St. George	In and Out Plumbing & Mach	Jacobs Construction Inc	Jones Paint & Glass
Halliburton	HomeSmart Advantage Cedar City	Industrial Brush Corp	Jacques and Associates	Jones Simkins PC
Hallmark Realty	Homestead Cabinet & Furniture	Infini D Learning	JAG Consulting Service	Jorgensen Ford
Halverson Mechanical	HomeWorks Construction Inc.	Info Trax Systems	Jake Hulet Construction	Josh Farrow Tile
Hambleton Auto Service	Honest One	Infomax USA	Jake Mellor Tax & Accounting	Joy Global
Hampton Inn St. George	Honeys Marketplace	Infowest	Jamberry	JP Electrical
Handi Quilter, LLC	Honeyville Food Products	Innomark Inc.	Janicki Industries	JP Excavating
Hanks Electric of Vernal, Inc.	Hoopes Construction	Inovar	Jared Bair, DPT	JS Wendling Art
Hansen Collision LLC	Hope Pregnancy Care Center	Inside Out Center For Advanced Medicine	Jason Bowen Artworks	JT3 LLC
Hardin Framing LLC	Horrocks Engineers	Intentionally Blank LLC	Jays Tire Pros	Julianne L Koer LCSW Inc
Harris Design Associates	House of Glass	Intermountain Cooling Systems	JBS - Hyrum	Juniper Systems
Harris Research	House Rock Builders	Intermountain Electronics	JBTC Technologies	K & K Auto & Restoration
Harvest Lane Honey	HRC Climate Services	Intermountain Foundation Repair	JC Electric	K Burrows Construction
Havenwood Academy	Hughes General Contractor - North Salt Lake	Intermountain Glazing	JC Hunt Co, Inc	K&K Glass
Hawes Construction	Hughes General Contractors - Washington City	Intermountain Safety Training & Consulting	JD Machine	K.C.A. Construction
Hawk Transportation LLC	Hulet Plumbing	Intermountain Truck and Trailer	JD Nixon Construction	K.D.C. Painting
Hawker Automotive	Hummels Auto Repair	Intermountain Turbine Services	JDM Auto	Kadince
HBH Design, LLC	Huntsman World Senior Games	Intermountain Wind & Solar	Jeff Sweaney Construction	Kaizen Data Security Group
HBME	Hurricane Car Lot, Inc.	Interstate Barricades	Jense Electric	Kanab Auto Body and Paint
Healing Hearts Foundation	Hurricane Health and Rehabilitation	Intertape Polymer	Jensen & Sons Construction	Kanab City Pool
Healthy Vibrations	HyClone Laboratories, Inc. - GE Healthcare	IPSC	Jensens Quality Concrete	Kanab Family Dental
Heart Centered Healing	Hycomp	Iron County Board of Realtors	Jessen Electric	Kanab Riding Lessons dba Judd Ranch Horses
Heartsong Spay Neuter Clinic	I Attitude Marketing	Iron County Nursing Home	Jessica Sheehan Smith Art	Kanab United Drug
Heath Plumbing	I smile Sunset Dental	Island Market	JG Electric LLC	Kane County
Henry Schein, Inc.	Isis Corporation	iSmile at Kaysville	JH Collection and Management	Kane County Hospital
Herff Jones	ICON Logan	Isom Masonry LLC	JH Tax and Accounting	Kane County Office of Tourism
Heritage Schools	Icon Remodeling	Itty Bitty Equipment Co	Jiffy Lube Richfield	Kane County Volunteer Center
Hero Plumbing	ICON Smithfield	IV Seasons	Jim Burton Mfg. Inc.	Kaneco Products Inc
High Country Auto		Ivins Red Mountain Dental	Jim Quitter Carpentry	Kapstone Container Corporation
High Country Realty-Parowan			JKCCooper Capital Corporation	KapStone Container Plant

CUSTOM FIT COMPANIES

Kay General Contracting, Inc.
 KB Shrink Wrap
 KBR Roofing Service Solutions
 Kee Engineering & Consulting
 Keith Leavitt Construction
 Kellogg Company
 Kelsch Construction
 Kendall Smith Construction
 Kendrick Electric
 Kenton Repair
 Kenworth Sales CO.
 Kesler Construction
 Key City Insurance
 Keystone Construction & Design
 Keystone Conversions
 Kidsville
 Kier Management
 Kimberly Clark
 Kings First Stop
 Kinnect Advisor Group
 Kinross Electric
 Kirk Webb Tile
 Kirks Car Care
 KK Mechanical
 KLM Woodworks LLC
 Knife River
 Knight Electric Inc
 Kody Construction
 Kogler Enterprises LLC
 Kolob Canyon RTC
 Kolob Music
 Kolob Regional Care and Rehab
 Konecny Brothers Lumber
 Kozco Mechanical
 KR Plumbing
 Krause Construction
 Kro-Art
 Kroger Layton Bakery
 Kroger Layton Dairy
 KSG Distributing, Inc.
 Ktech Engineering
 Kurt Built LLC

Kurt C Meacham Construction
 KW Excavation, Inc.
 L & J Repair
 L & L Mechanical
 L & M Builders LLC
 L J Wilson
 L&M Stonemaker, LLC
 LaFargeHolcim Inc
 Lakeview Hospital
 Lance Paul Automotive
 Lances Repair
 Landmark Companies
 Landmark Testing & Engineering
 Landons Diesel Service
 Landvoice
 Larrys Trucking LLC
 Larsens Ace Hardware
 Lawn Butler
 Layton Family Medicine
 Layton Veterinary Hospital
 Lazy One
 LDS Church Services
 Leaf IOT
 Lean Solutions
 LeanWerks
 Leavitts Electric
 LeBar Cabinets & Furniture Co
 Ledger Gurus
 Lees Market Place
 Lees Plumbing
 Legacy Outdoor Adventures, LLC
 Legendary Living
 Leisure Pool and Spa
 Leisure Research LLC
 LeLacheur Plumbing, Inc.
 Leo Construction
 Les Whitmore Engineering
 Levitz Enterprises
 Lew Shurtliff Construction
 Lewiston State Bank
 Life Technologies Corporation -
 ThermoFisher

Lifestyle Products
 Lifetime Products
 Lillywhite Stone
 Lindsey & Associates, Inc.
 LiquaDry Inc.
 Lisbon Valley Mine
 Lite Enterprises
 Little and Sons Electric
 Little Hollywood Museum
 Little Oats
 Live Wire Electric
 Lloyd Facer Trucking
 Logistic Specialties Inc
 Lollie Pedersen - Newdewello Real Estate
 Lone Star Service
 Lo-Shu Star
 Loughs Consulting
 Love em & Leave em Pet Sitting
 Loveland Landscape and Gardens
 Lovell & Cropper Construction
 Low Range Off-Road
 Lower Foods
 LP Windows & Doors
 Luke Udy Insurance Agency
 Luminarete
 Luna Heating & Air Conditioning
 Lundahl Building Systems
 LV Swiss
 LW Millers Transportation Inc.
 Lynn Inc
 M & M Welding & Construction
 M and D Auto
 M. Kahle Leavitt DMD PL
 M.G. Aldred Construction
 M+S Turquoise
 MAC Plumbing and Heating
 Maca Supply Company
 Magleby Dental
 MAKstride
 Malnove of Utah
 Malouf
 Marino Toulatos Realtor

Mark Swan Fine Art
 Markay Johnson Construction
 Marshall and Evans Electric
 Mary Ann Patterson Art
 Mary Ellen Economy - Self Proprietor
 Artist
 Master Electrical Service
 Master Muffler of Clearfield
 Master Muffler of Layton
 Masterson Excavating
 Materion Natural Resources
 Matsuda Acupuncture
 Matthew Simpson
 Maureen Booth Fine Art
 Maxwell Construction Inc
 Mayfield Automotive
 MC Siding
 MC Tech
 McArthur Landscaping
 McWane Ductile-Utah
 Meadowland Enterprises
 Medallus Medical
 MedQuest Pharmacy
 MegaDiamond
 Merrills Tile and Stone
 Micahs Pools
 Michael Nielson
 Michael Silva Art
 Michael Smoody General Contractor
 Michael Zabriskie Art
 Mickel Bros Sheep Co
 Midas Auto Service
 Mid-Utah Radio
 Mike Bachman Plumbing
 Mike Gubler Construction Inc
 Mike Norr Plumbing Inc
 Mikes Auto Clinic
 Mikes Tool & Nail
 Miles Well Service Inc.
 Miller and Co
 Milliken & Company
 Mindfire Technology

Mineral Resources International
 MityLite
 Moab Cliffs and Canyons Inc
 Moab Mountain Bike Instruction
 Mobile Rreflexology
 Modere
 Modern Woodmen
 Mohave Community College
 Molycorp Rare Metals (Utah) Inc.
 Monarch Counseling
 Monarch Therapy
 Monroe Canyon Assisted Living
 Monty Stratton Construction
 Monument Valley Tipi Village, LLC
 Moonlight Diesel
 MooreTek Herbal
 Moosman Building Construction
 Morgan Health Center
 Morgantown Machine
 Morinda Holdings, Inc.
 Mortgage Authority of Utah
 Morton Salt
 Motor Parts Co
 Mountain Realty
 Mountain Valley Excavating Inc
 Mountain Valley Heating & Air
 Conditioning
 Mountain Valley Machine Inc.
 Mountain Valley Mechanical
 Mountain View Investment &
 Construction
 Mountain View Law Group
 Mountain View Machine & Welding Inc
 Mountain View Real Estate
 Mountain West Medical Center
 Moxtek, Inc.
 MS Concrete Inc
 MTC/Clearfield Job Corps Center
 Mudrow Homes & Construction
 Munz and Sons Roofing
 Myers Plumbing
 NAI Commercial Real Estate

CUSTOM FIT COMPANIES

NasCo Swabbing Inc.	Oakshire Kitchens	Petersen Inc.	Conditioning	Reed L Munson Construction
Naturally Chic LLC	Obsidian Construction	Pharmaceutical Research Organization	Professional Plastics	Reeds Muffler and Brake
Natures Sunshine	Ocean Star	PHC Services	Pure Bliss Massage & Spa Therapy	Reeds Precision
Navigator Business Solutions	Ogden Clinic	Phil Lyman, CPA	Pure Power Electric	Referral Web
Neil Glauser Construction	Olive Branch Birth and Family Wellness	Photography By Marie Bryner-Bowles	Purkeys Fleet Electric	Regency Mint
Nelco Contractors Inc.	OnSite Care Clinics - Sage	Photography By Marie Bryner-Bowles	QEP Energy Company	Reid Well Supervision
Nelsons Plumbing	OP Tanks, LLC	Piechowski Arms	Qualitas	Reid-Ashman Manufacturing, Inc.
Nelsons Sunbeam Coal	Ophir Spiricon	Pink Ladies of Dixie, Professional Maid Service	Quality Fitness and Health	Reliable Appliance
Nestle	Oral & Facial Surgery Center	Pinnacle Production and Manufacturing Inc	Quansys Biosciences	Repairs Plus
Never Forgotten Videography	Orange Mountain Heating & Air Conditioning	PK White Construction inc	Quick Numbers Bookkeeping. LLC	Revd Up Auto Service
New Cast Stone	Orbit Irrigation	Plastic Resources	Quilt EZ	Reynolds Auto Care dba Jiffy Lube
New Frontier Solutions	Orbital ATK	Plumb Dental	R & O Construction	RHC Construction
New Horizon	Orbital ATK - Propulsion Systems	Porter Properties & Co Inc	R&R Quality Development	Rhett's Trucking
Newell Rubbermaid	Osprey Packs	Positive Works	R.A.M Restoration & Repair	Rhine Construction
Newfield Production Company	Out of the Woods	Post Asphalt Paving & Construction	R.A.M. Restoration and Repair LLC - Gunnison	Rhino Linings
Newville Development Inc	Outdoor Kitchen Concepts	Post Consumer Brands	R.E.D Inc	Rhodes Welding
Nexeo	Overland Trucking of Utah Inc	Posy Pals	R.J. Enterprises	Richards Sheet Metal
Next Generation Installations, Inc.	Overland West Inc	Powder Mountain	Rachel Pettit Art	Richardson Family Dentistry
Nichols Building LLC	Pace Excavation Co	Power Innovations	Rainbow Painters/Paper Hangers	Richfield Veterinary Clinic
Nix Construction	Pacific Real Estate	Power Strokes Painting	Rainbow Sign & Banner	Rick Rich Remodeling and Repairs
NJC Excavating	Page Electric Service	Powers With Animals	Ralph Brown Construction Inc	Riders Mountain View Tire
Nobie Insurance Group	Pain and Injury Clinic of Utah	Powerreq	Ralph Smith Company	Riggs Massage
Noorda B.E.C	Palmer Artistic Inc.	PPM Plumbing Heating & Cooling	RAM Company	Riley Construction Inc
Norbest LLC	Palmers American Car Care Center	Precision Air Management	Randy Vincent Trucking	Riverside Automotive
Norms Plumbing	Panici Software	Precision Assembly	Randys Engine and Machine Inc	Riverside Dental Studio
Nortek Security and Control	Paragon Automation	Precision Development Inc	Rasmussen Excavation	Riverwoods Mill, Inc.
North Ogden Animal Hospital	Parish Construction	Premier Body & Paint	Rawson Construction	RJs
Northern Construction	Parkwood Properties	Premier Development	RC Self Storage	Roadrunner
Northfork Drywall	Parry Lodge	Premier Heating & Cooling	Rebecca Ory Hernandez	Robert Judd Auto Sales
Northrup Grumman	Patricia Hopps Photography	Premier Pediatrics	Re-Creation Retreat	Robert Pearson MD
NorthStar Financial	Paul Brown & Sons	Prescriptions Plus Pharmacy	Recycled Earth	Roberts Printing
Novak Conversions	Paula Wadsworth Art	Presto Products Company, RPG	Recycle-motorsports	Robinette Shult Accounting
NRP Jones	Paxman Automotive	Prismview - Samsung Electronics	Red Desert Inc	Robins Insurance
NTS Electrical Services Inc.	Paxman Heating and Cooling, Inc.	Pro Auto Care	Red Line Plumbing LLC	Robinson Construction LLC
Nu Century Homes	Peak Well Service	Pro Construction & Landscaping	Red River Adventures	Robinson Fencing
Nu Skin Enterprises	Peel Furniture Works	Pro Fab and Welding	Red Rock Collision	Robinson Refrigeration
Nucor Building Systems Utah	Pepperidge Farm	Pro Polymers, Inc.	Red Rock Companies	Robotrex.net
Nucor Cold Finish	Perco Rock Co	Pro Style Homes	Red Rover Retreat Inc	Rock Tile Construction
Nucor Steel	Performance Auto Center	Pro Tower Painters	Redcliff Ascent	Rocket Lawyer
Nutraceutical	Performance Ford Lincoln of Bountiful	Probst Electric	Redd Agri	Rockin V Café
Nuway Engineering	Perry Homes	Procter & Gamble	Redmond Minerals Inc	Rocking P Blasting
Nyman Painting		Professional Heating and Air		Rocky Mountain ATV

CUSTOM FIT COMPANIES

Rocky Mountain University of Health Professions	Schreiber Foods, Inc. Logan	Skyline Metal Works	Southwest Heavy Equipment	Stephen Wade Auto
Rocky Mountain Welding Services Inc	Schreiber Foods, Inc. Smithfield	Skyta, LLC	Southwest Internal Medicine	Stevens Mill Inc. DBA Green Valley Mill
Rocky Mountain Wellness Center	SCI Automation Inc	Skywalker Holdings	Southwest Marble & Granite Inc.	Stewart Investments Inc.
Rocky Mountain West Construction	Scott Heating and Air	SL Construction	Southwest Spine & Pain	Storm Products
Rocky Ridge Rock, Inc.	Scott James Plumbing & Heating Inc.	Slate Ridge Homes	Sparenberg Builders LLC	Stott & Company
Rocky Sage Ranch Inc	Scott Lemley Construction	Sleduna	Spartan Construction Service	Stotz Equipment
Rodriguez Painting	Scott Thompson Construction	Small Town Auto	Spartan Plumbing	Straight Stripe Painting, Inc
Rods Best Auto Care	ScyTek Inc.	Smead	Specialized Analysis Engineering, Inc.	Strain Landscaping
Roger Coleman Construction	Seaglass Pools	Smedley & Associates Plumbing & Heating, Inc.	Specialized Communication Services, LLC	Strata Networks
Rogers Rock	Sean Rowley Fine Art	Smileys Auto	Specialized Piping & Mechanical	Strategem Ground
Rollin Stone LLC	Second Nature Uintas	Smith and Edwards	Spectrum Sports	Stratum Real Estate Group
Rons Shell	Sego	Smith Manufacturing	Speed Lube	Streamline Automotive
Roosevelt Vision Clinic	Serenity Peak, LLC	Smithfield	Speed Lube on Bluff	Streamline Detailing
Rowleys Gutters for Less	Serenity Springs Assisted Living	Smiths Layton Distribution	Spencer Hampton Trim Works Inc	Streamline Plastics
Royalty Services Group, Inc.	Service Master Restoration and Cleaning Services	SMJ Construction	Spring Glen Studio	Stress RX
RR Donnelley	SetPoint Companies	Smooth Water Solutions	Spring Works Utah	Stubbs & Stubbs Oilfield Construction Inc.
Rustica Hardware	Seven Woods LLC	Smuin, Rich & Marsing CPA	Square Deal Transportation	Studies Weekly
Rustys Tool Repair	SF Electric	So Sheik Salon	Squatty Potty	Style Tech Wood
Ruth Hewlett Art	Shakespear Hardwood Flooring	Soar Creative Services	SSI - Structural Steel Inc.	SUFCO
Ryan Welding & Fabrication	Shane Bess Tile	Soda Crazy	St George Childrens Museum	Summit Valley Plumbing Inc
S & S Homes	Shane D Gagon MD PC	Solutionreach	St. George Dental Care	Sun Belt Construction
S & S Steel	Shannon Williams Olsen REMAX Metro	Somerville Auto & Marine	St. George Inn and Suites	Sun Country Awnings & Construcion
S & S Worldwide	Shannons Massage Getaway	Son Builders Inc	St. George Rehabilitation	Sun Nut Inc. dba Sunshine Health Foods
S and S Global Enterprises	Sharp Transportation	Sonoco Plastics	St. George Staging	Sundial Medicinals LLC dba Emily Stock
S R Mechanical	Shawn K Leonard DMD	Sooter Electric	St. George Transmission	Sunnyside Cogeneration
Sadler Construction	She Geek Studio	Sordens Custom Rocks	Staheli West Inc	SunRiver Construction LLC
Sage Gallagher	Shorty Construction, Inc.	Sorensen Sales & Service	Staker & Parson Companies - Smithfield	Sunroc
Sales Rabbit	Shupe Electric, Inc.	Sorensens Ranch School Incorporated	Staker Parson Companies - South Weber	Sunroc - Building Materials
Salmon Electical Contractors	Sideone Gutter	Sosopital.com	Staker Parson Companies - Draper	Sunset Framer
Salmon HVAC	Silent City Construction	Soul Sister Solutions	Staker Parson Companies - Ogden	Sunwest Custom Homes
Salt Valley Chiropractic & Nutrition Clinic	Silicone Plastics Inc	South Central Communications	Stanworth Electric	Superior Hardwood & Tile LLC
Samie Hill LMT	Silver Arrow Development	South Central Therapies	Stapp Construction, Inc.	Superior Construction
Samuel Knight DDS	Simplot Phosphates, LLC	South Shop Steel	Starling Real Estate	Sustainable Energy Solutions
San Juan Record	SirsiDynix	Southeastern Integrative Healing Arts Center	State Bank of Southern Utah - St. George	SUVA Tile
Sanders Associates Architects	SKF	Southern Utah Aluminum	State Bank of Southern Utah - Richfield	SWATC Kane Campus
SAPA Industrial Extrusions	SkinTastic Creations	Southern Utah Auto Tech	Stauffer Enterprises, Inc.	Syphus Construction
Satellite Services Inc.	Skretting	Southern Utah Doors	Steam King LLC	Systems Communications/Syscom
Savage Bonanza Transportation	Skull Quest LLC	Southern Utah Lumber & Supply	Steamboat Energy	T & J Foods
Savage Services Crude Hauling	Sky Trampoline Arena	Southern Utah University	Stearns Construction Inc	T & M Manufacturing
Sceptre Management	Sky West Airlines	Southwest Auto Recycling	Steele Plumbing	T&C Tire Factory, Inc.
Schmidt Construction	Skydandee Manufacturing		Steffensen Real Estate	Taag Professional Cleaning and Windows

CUSTOM FIT COMPANIES

Tachiinii Nursing Services, Inc	Tire Pros	US Magnesium LLC	Watts Steam Store	Wyn Inc
Taegeer Art LLC	Titan Stairs & Trim	US Windshield Repair	Wavetronix	Xactware
Tambasco Construction	TK Gutter	USF Fabrication	Weather Tech LLC	Xcellent Homes, LLC
Taras Healing Touch, LLC	TKR Enterprises	USI Cardall Insulation	Weichert Realtors	XCO
Taylor Made Fencing	TNT House Painting	UST Mfg LLC	Wencor	XCR Diagnostics
Taylor Made Tile	T-N-T Landscape & Excavation	Utah Barricade	West Drywall	XOJO Sports
TCR Composites	Todd Jones Plumbing	Utah Gastroenterology	West Fab	York Cabinetry & Woodworking
TDH Welding LLC	Todd Thorley Construction Inc	Utah Process Service	West Liberty Foods	You Can See Clearly Now
TeamWorks Therapy, LLC	Tom Lamb Construction	Utah South Real Estate and Appraisal	West Point Dairy Products, Inc.	Young Automotive Group
Tec Electric	Toms Mechanical	Utah State University - Kanab	West Wood Carpet Center	Young Automotive Group University
Tech-Steel	Tooele Chamber of Commerce	Ute Tribal Enterprises LLC	Western Chemical LLC	Young Chevrolet
Ted M Steffensen Construction	Tracy Buehler Consulting LLC	Utility Trailer	Western Heating & Air Conditioning	Young Dodge
Tefco	Tracys Repair Center	V and T Enterprises	Western Mechanical	Young Kia
Tekko Inc	Training in Life Choices	V Bar Gun and Repair LLC	Western Rock Products	Young Living Essential Oils
Teleperformance	Tram Electric	V.C. Milne & Sons Welding	Western Spirit Cycling	Youngs Design
Telisa Owens Art	Trampoline Parks LLC	Valerie Orlemann Art	Western States Plumbing & Heating	Youngs Machine Company
Textura PlanSwift Corporation	Transport Diesel Service	Valley Implement Co. Inc.	Western Trails Plumbing, Inc.	Your Employment Solutions
TG DeMille Construction	Triassic Industires	Valley Tank Service	Western Well Service Inc.	Yvonne Baur Photography
THB	Tri-Hurst Construction	Value Investment Group LLC	Westinghouse	Zachry Construction
The Fireside Home Center	Tri-Phase Electric	Vaughn Electric	Westside Medical	Zamp HR
The Fundamental Leader	Triple B Concrete	Velocity Homes	Westwood Law PC	Zero Manufacturing, Inc.
The Garage	Triple T Heating and Cooling	VFC, Inc.	Wet Jet Precision	Zi Aura Southwest Photography
The Healing Touch	Trish Mackey Art	Vicars Trucking	Wheeler Machinery	Ziaura Southwest Photography
The Journey	Tri-State Trucking	Victor Christensen Construction	Whipporwill	Zigg Design LLC
The Lumberjack LLC	True Finish Painting	Vikki Walker Fine Art	Whitaker Construction Co	Zion Diesel LLC
The Odd Job Wizard	TTM, Time to Market	Viracon	Wild West Gypsy Photography	Zion Motors
The Ohmstead LLC dba Omega Horseshoes	Tucker Speed	VO Brothers Mechanical	Wild West Voyages, LLC	Zion Mountain Ranch
The Payne-ting Place	Tunex	Voxy Networks	Williams International	Zion Plumbing & Heating
Therapy West PC	Tunex - Layton	Vulcraft	Wilson & Sons Painting	Zions Bank - Farmington
Theresa Otteson Fine Art	Tunex of Bountiful	W A Francis Construction	Wilson Electronics	Zions Saving Guide
THM Remodeling Services	Twinlab Corporation	W Anderson Construction	WinGate Wilderness Therapy	Zodiac Aerospace
Thompson Manufacturing Inc	Two Banana Construction LLC	Wadman Construction	Wingers Roadhouse	Zurvita
Thompson Steel, Inc.	U.S. Oil Sands	Walmart Distribution	Winkel Construction Co	Zurvita - Lacy Hopper
Thornton Construction Group	Uber Kidz Klubhouze	Wal-Mart Distribution	Winnbees	
Thrive Life	Uintah Basin Medical Center	Warby & Warby Marketing	WL Plastics	
Thurgood Plumbing	Uintah Machine	Warner Construction Inc.	WNPA/Hubbell Trading Post	
Timberline Cabinet Doors Inc	Ulrike Brown Reiki Practitioner	Warr Enterprises LLC	Wood Auto	
Timberline Electric Services	Unique Deliveries, LLC	Wasatch Electric	Woodenshoe Construction	
Timberline Range Camps	United Team Mechanical	Waste & Water Logistics, LLC	Woodruff Auto	
Timothy Whitaker, DPT	Universal Trailer Corp	Watson Engineering Company, Inc.	Woodworking	
Timpanogos Harley Davidson	Uplow Graphic Design Studio	Watson Real Estate	Wright Homes	
Timpson Photography	Upper Limit Aviation	Watts Construction	Wright Way Contracting	

