

STATE OF UTAH  
BROADBAND OUTREACH CENTER  
[BROADBAND.UTAH.GOV](http://BROADBAND.UTAH.GOV)

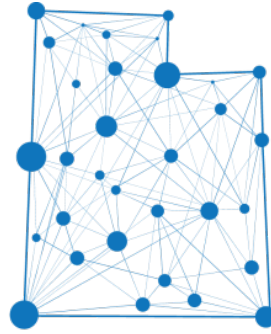
# Public Utilities, Energy, and Technology Interim Committee

Kelleigh Cole

June 21, 2017



# Mission



STATE OF UTAH  
BROADBAND OUTREACH CENTER  
[BROADBAND.UTAH.GOV](http://BROADBAND.UTAH.GOV)

Help communities, businesses and individuals  
obtain access to the broadband services they need.



# Broadband Advisory Council

Utah Broadband Advisory Council was formed in 2011 to improve coordination and promote broadband expansion



# Assistance Requests

- 9 Private Companies (service upgrades)
- 6 Broadband Providers (data, government coordination)
- 20 Cities (planning support/service upgrades)
- 9 Counties (planning support/service upgrades)
- 4 Federal Agencies (policy guidance/data)
- 7 State Agencies (data/coordination assistance)
- 8 AOGS/Special Service Districts (planning)
- 9 Non Profits (policy guidance/data)
- 3 Senate Inquiries



# Locate.utah.gov

The screenshot displays the website [locate.utah.gov](http://locate.utah.gov) in a web browser. The browser's address bar shows the URL: `locate.utah.gov/#x=-12449672&y=4971971&scale=144448&l=999%2C6%2C7%2C8`. The browser's tab is titled "Broadband Economic De". The browser's address bar also shows several open tabs: "Apps", "Contacts and Follow", "Utah-ID", "IEDC 2016 Annual Co", "a number", "AGRC Planning Map", and "down".

The main content area is a map of Salt Lake City and surrounding areas, including West Valley City, South Salt Lake, Holladay, Kearns, Taylorsville, Murray, and Cottonwood Heights. The map is overlaid with numerous location pins, some of which are red and some are black. A search bar is visible in the top left corner of the map area, with the text "Find Address".

On the left side of the map, there is a sidebar with the following content:

- UTAH ECONOMIC DEVELOPMENT MAP**
- ABOUT
- SUBMIT A SURE SITE
- CONTACT US
- Click on the map to get information about the current location.
- Find Address
- SURE SITES** (dropdown menu)
- Broadband** (dropdown menu)
- Utilities** (dropdown menu)
- Workforce** (dropdown menu)
- Transportation** (dropdown menu)
- Lifestyle** (dropdown menu)
- STATE OF UTAH BROADBAND OUTREACH CENTER
- edcUTAH ECONOMIC DEVELOPMENT CORPORATION OF UTAH
- Utah Governor's Office of Economic Development

At the bottom right of the map, there is a logo for "AGRC | USOE, UEN, AGRC".

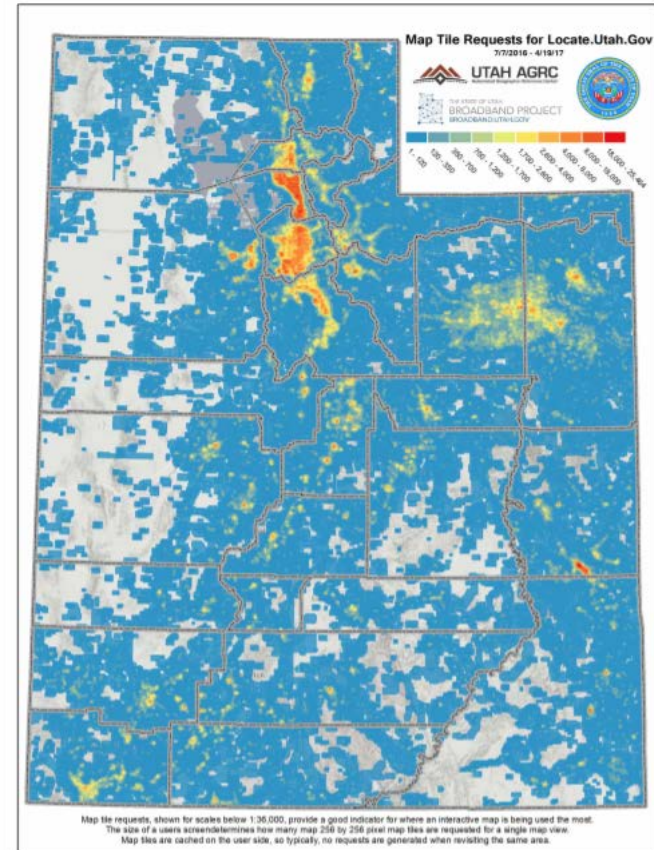


2016 International  
Economic Development  
Council Award



# Locate.utah.gov Usage

Heat map of where users have zoomed into the map



# Mapping Tools Usage

	Sessions	Users	Pageviews	New Users
Residential Map	5174	3824	6037	73%
Locate.utah.gov	4588	3046	7178	65%
Broadband Website	11178	7924	20657	69%
Total	20940	14794	33872	69%





# Broadband Stats

Speed	State wide	Wasatch Front	Rural
<b>100 Mbps and Above</b>	88.60%	95.11%	72.18%
<b>50 Mbps and Above</b>	90.71%	95.74%	78.00%
<b>25 Mbps and Above</b>	95.02%	98.82%	85.44%
<b>10 Mbps and Above</b>	99.33%	99.86%	97.99%
<b>6 Mbps and Above</b>	99.37%	99.86%	98.14%
<b>3 Mbps and Above</b>	99.79%	99.99%	99.30%
<b>1.5 Mbps and Above</b>	99.84%	100.00%	99.43%
<b>0.7 Mbps and Above</b>	99.85%		99.48%
<b>Unserved</b>	.015%		0.52%



# Supporting State Efforts

- State contracts/sole sourcing verification
- Telecommunications Advisory Council
- Telecom information for train stops



# Current Projects

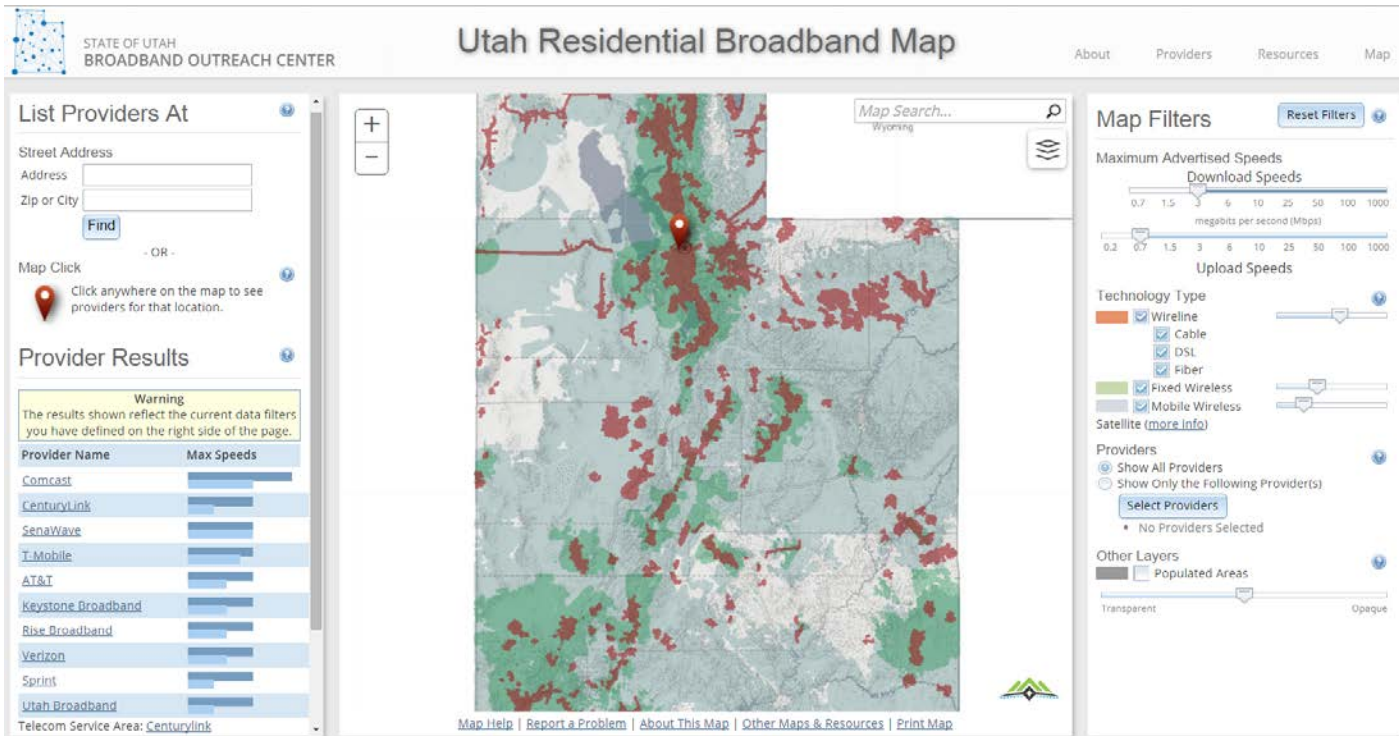
## Daggett County



## San Juan County



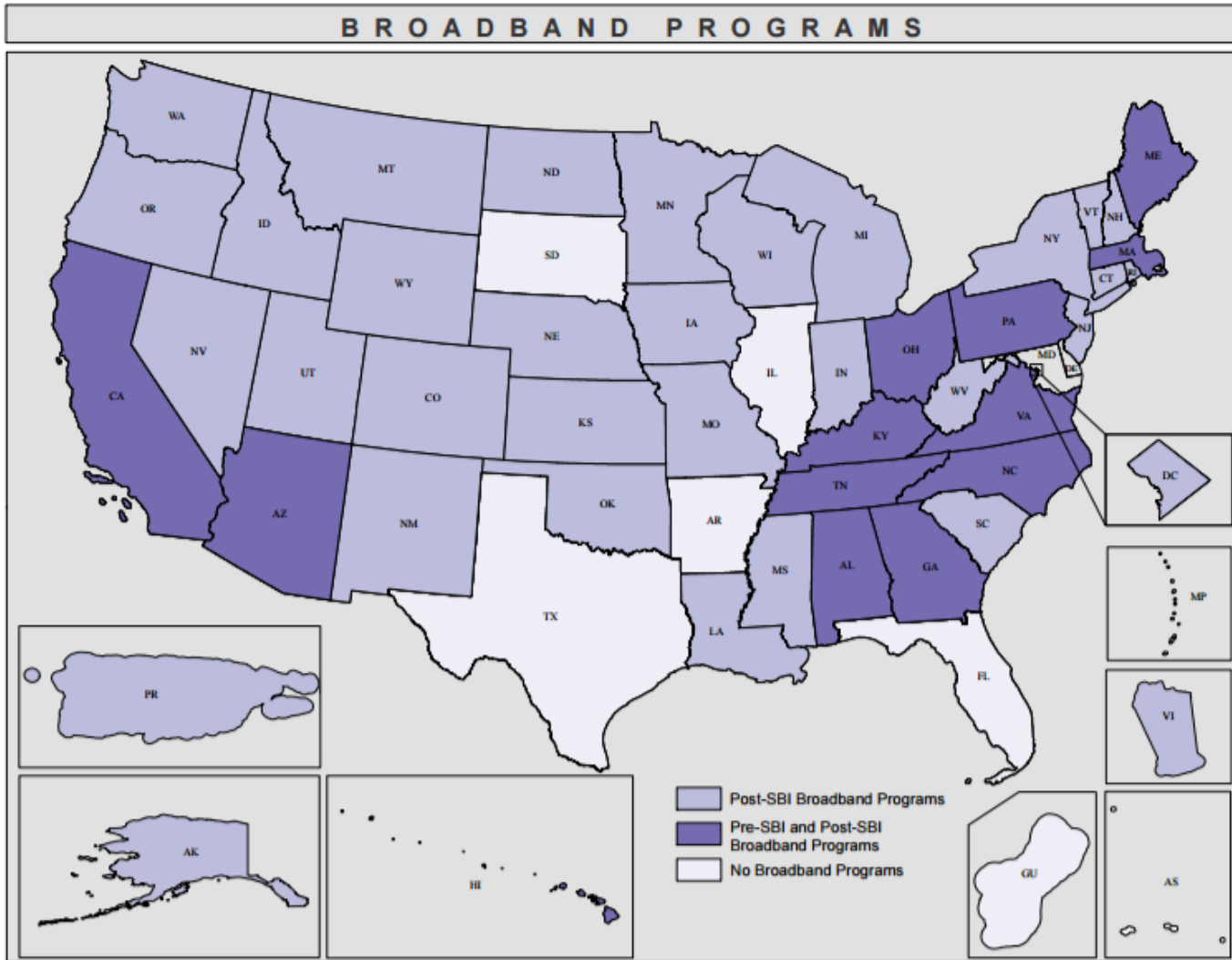
# Residential Mapping



- Identify areas of the state that have service needs.
- Data is voluntarily collected (54 participating providers)
- The FCC discontinued mapping broadband in 2014



# State Mapping Programs



# Federal Policy Support

Highway  
Rights-of-Way  
Permitting  
Efficiency Act  
of 2017

Introduced  
March 10  
Senator  
Hatch



# Federal Policy Support

- Vice chairing the FCC's Broadband Deployment Advisory Committee, tasked with providing recommendations to accelerate broadband deployment



# Future Projects

---

- Corporate Recruitment/Expansion Support
- City/County Outreach
- Universal Service Fund Evaluation
- Continued Mapping
- Evaluate FirstNet State Planning





# Thank you!

---

**Kelleigh Cole**

[kcole@utah.gov](mailto:kcole@utah.gov)

(801) 538-8831

