

# Transportation Governance and Funding Task Force • July 13, 2017



Puget Sound Regional Council

# Today's Meeting

## Puget Sound Region's

- Growth Trends
- Regional Planning Framework
- Transportation Funding



# Central Puget Sound Region



- 4 million people
- 2.3 million jobs
- 4 counties: King, Pierce, Snohomish, and Kitsap
- 82 cities and towns
- Urban and rural
- 6,300 square miles
- 1,000 square miles in urban growth areas





King County



Kitsap County



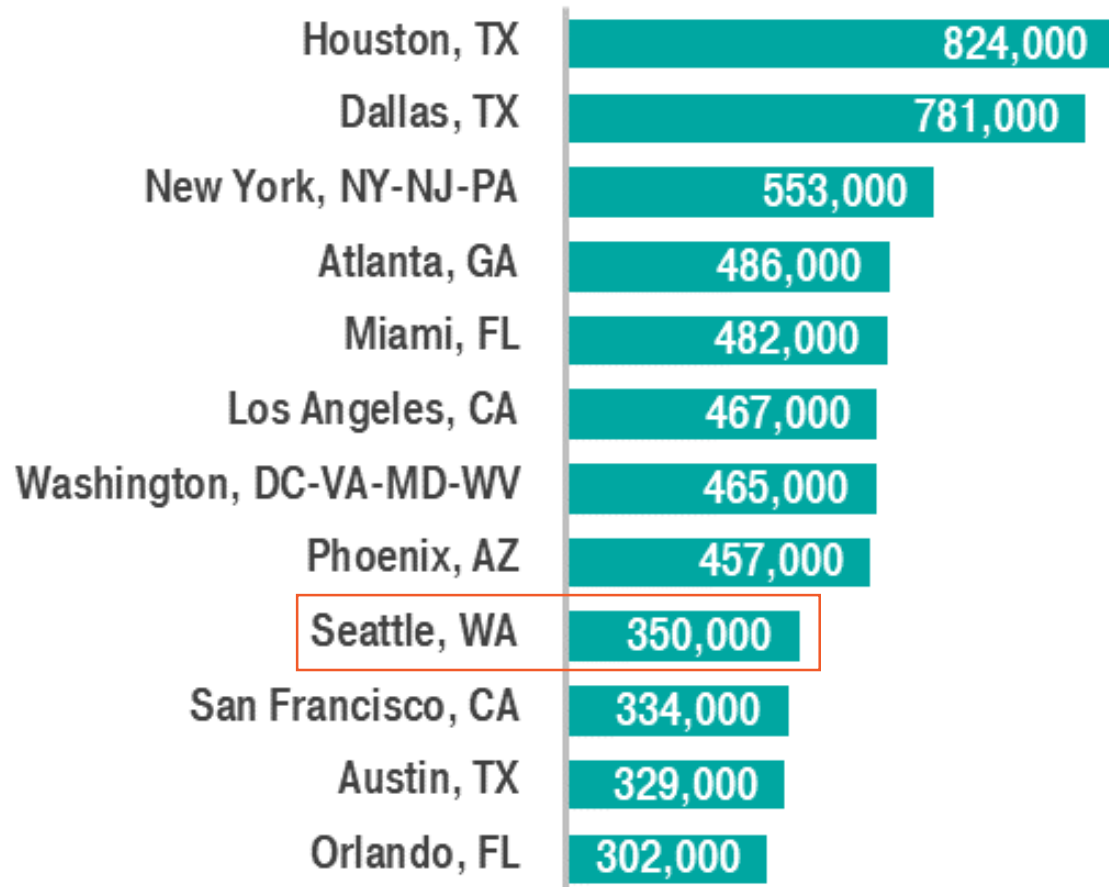
Pierce County



Snohomish County

# Nation's Fastest Growing Regions

Major U.S. Metro Areas (1M+ population), 2010-2016



Source: U.S. Census Bureau, Population Estimates Program





MORROW

ALIMAR

Ballen

Recycling Washington ReNu 9400 Recycling

150



# Population Growth

## Seattle

**1960: 557,087**

## Region

**1960: 1,512,979**



# Population Growth

## Seattle

**1960: 557,087**

**1990: 516,259**

---

## Region

**1960: 1,512,979**

**1990: 2,748,895**





# Population Growth

## Seattle

**1960: 557,087**

**1990: 516,259**

**2016: 713,700**

## Region

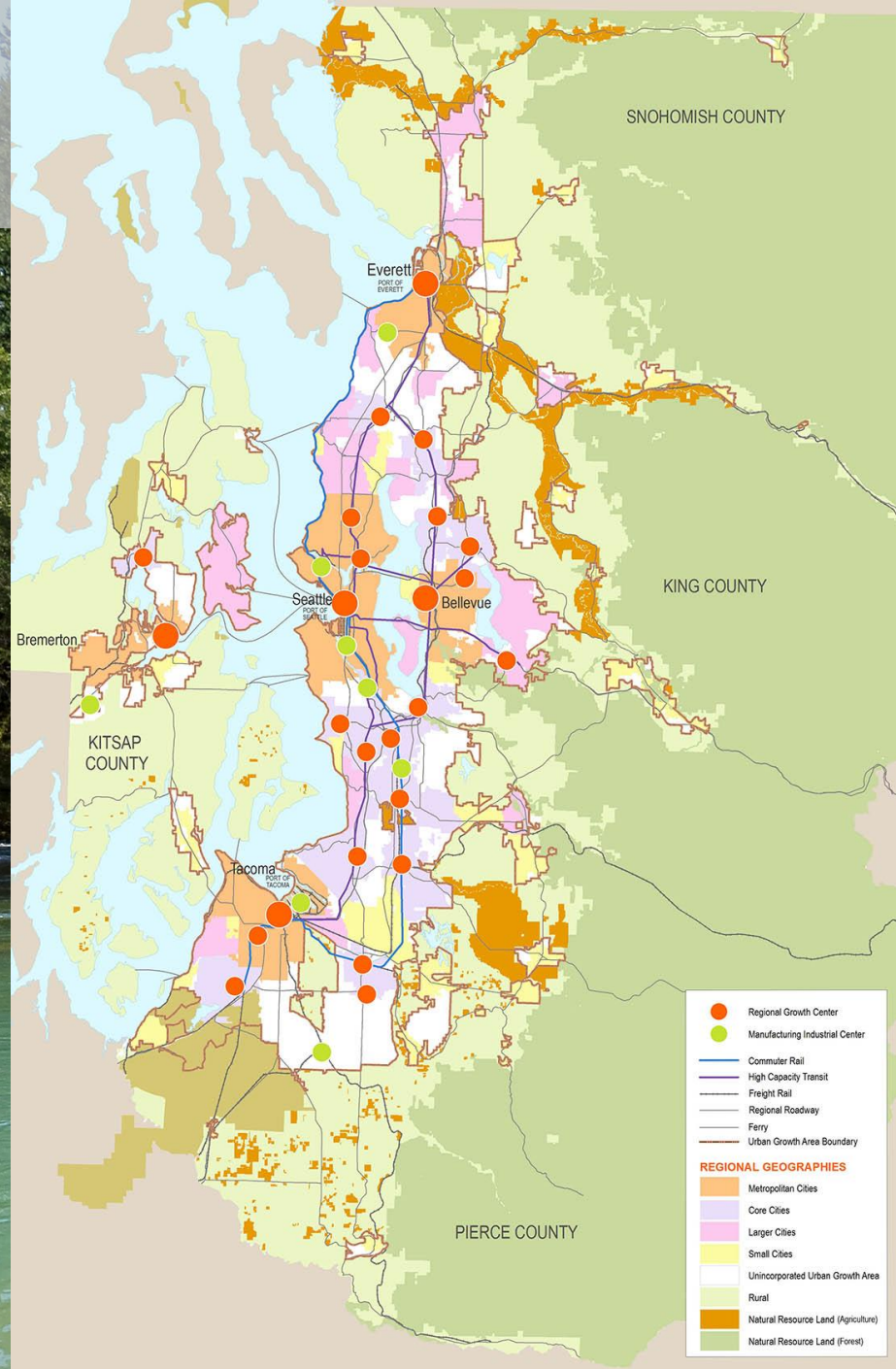
**1960: 1,512,979**

**1990: 2,748,895**

**2016: 4,066,800**



# VISION 2040



# Limiting Sprawl

Regionally, 96% of permitted housing units were in cities and urban areas in 2015

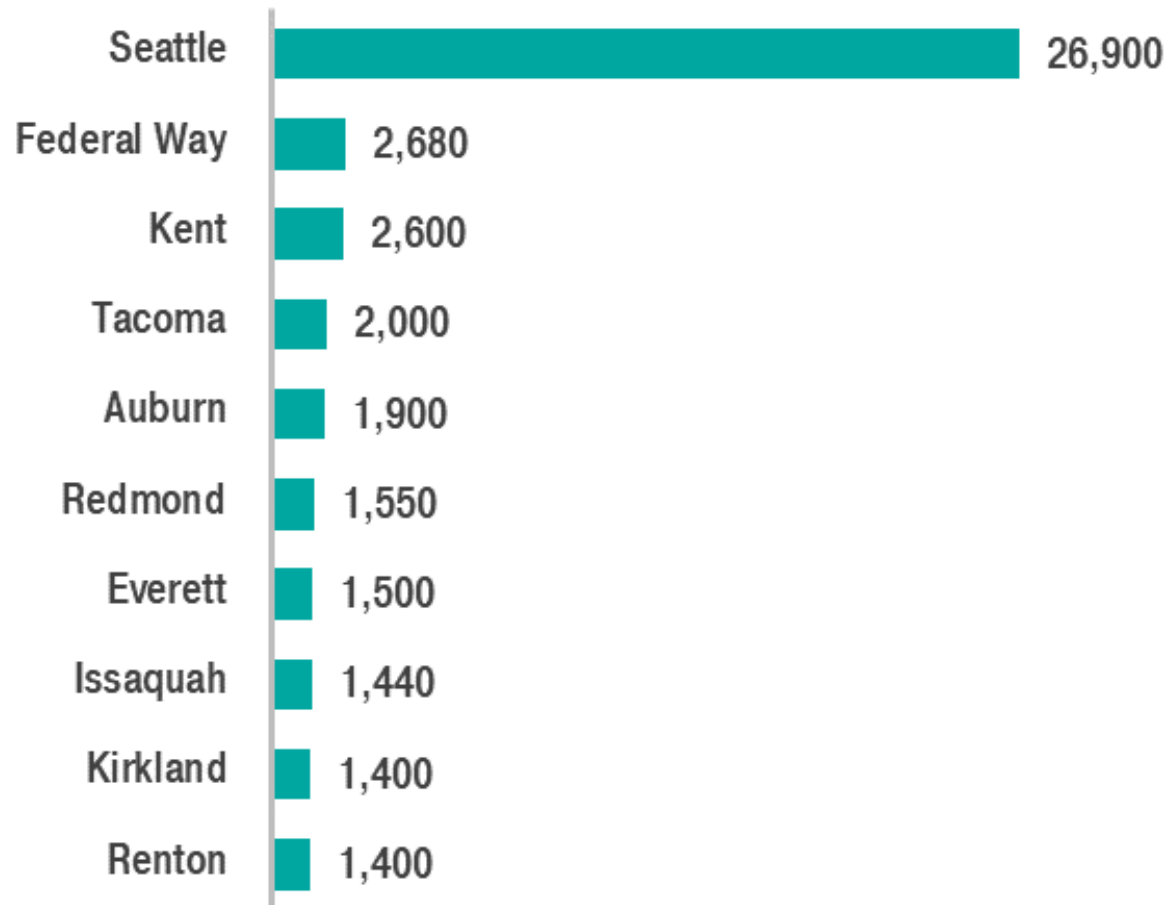
Compared to 72% in 1991





# Region's Fastest Growing Cities

Cities with Greatest Nominal Growth, 2016-2017



Source: OFM, April 1, 2017 Population of Cities, Towns, and Counties



# Suburbs are Changing



# Suburbs are Changing



# Boeing 777 Assembly Plant, Everett





# Traffic Congestion



# Transportation 2040

## Implement VISION 2040

- Growth Strategy
- Centers

## Environment

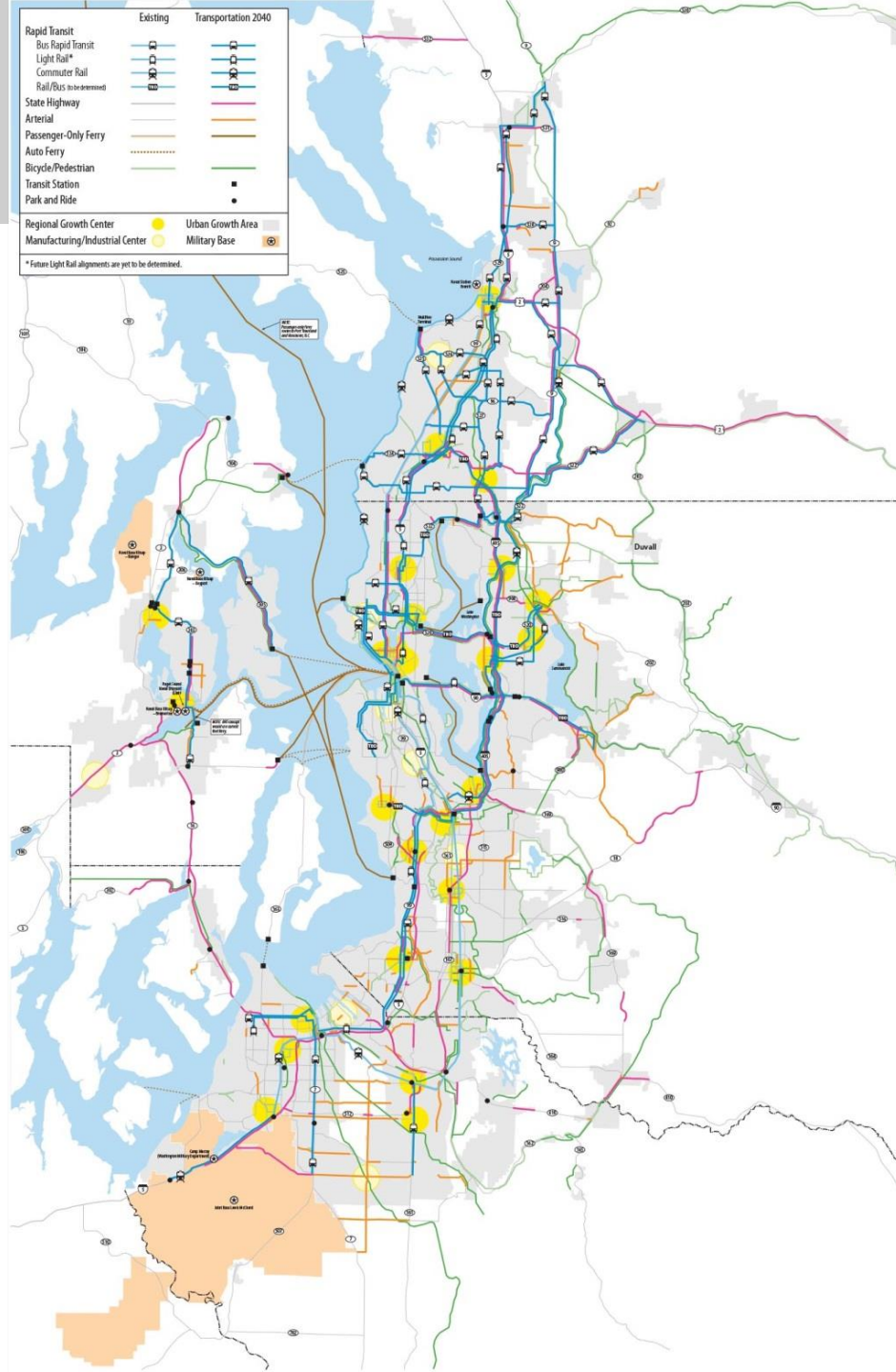
- Climate Change Strategy
- Puget Sound

## Mobility

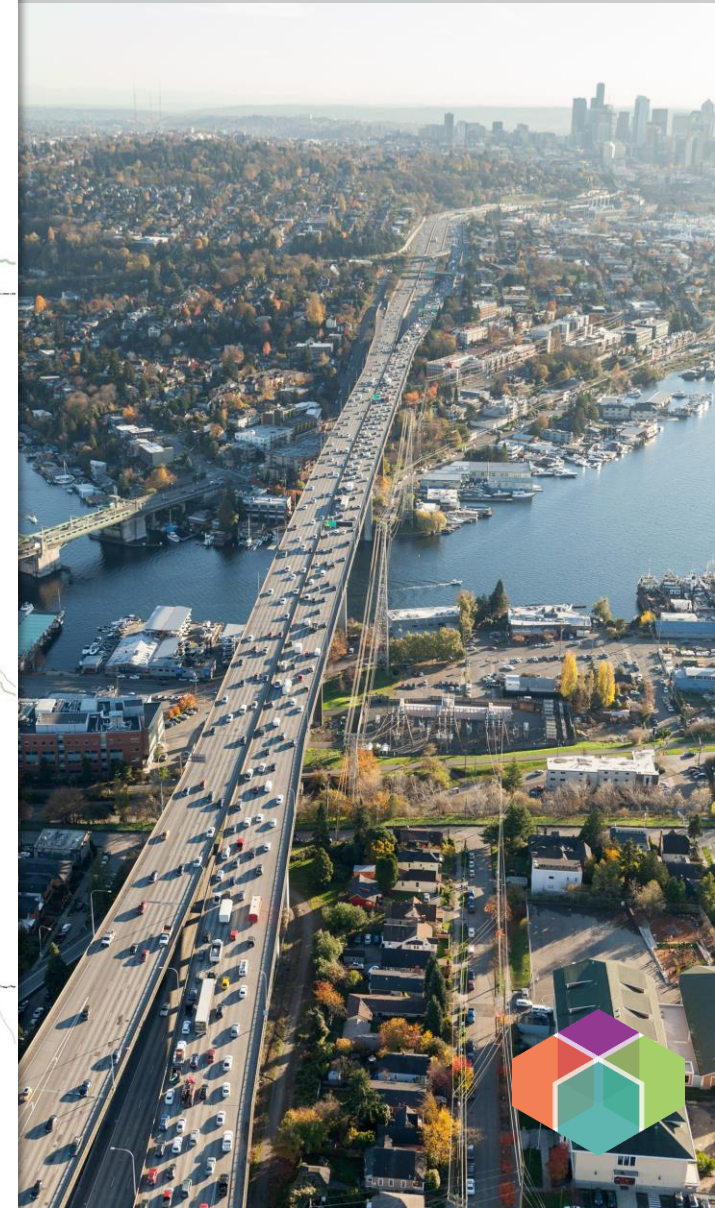
- Regional economic vitality
- Mobility for people and goods movement

## Sustainable Funding

- Reliable, predictable, sufficient sources of revenue



**\$174 Billion**  
**30 Year Strategy**



# Transit Ridership Growth is Fastest in the Nation

Transit ridership has grown faster than any other large metro area in the country over the past 10 years

Annual transit boardings were the 8<sup>th</sup> highest in the country in 2015





# SR 99 Viaduct & SR 520 Floating Bridge Replacements



# Light Rail Today

## Sound Transit

22 stations

21.95 miles

2,040,154 May 2017 ridership



## TRAX UTA

56 stations

46.8 miles

1,498,483 May 2017 ridership



# Light Rail in 2040

- Voter approved regional measure in 2008 and 2016
- 116-mile regional system, five times larger than it is today
- Light rail is projected to serve about 600,000 riders every day
- 20 hours each day, 6 minute peak and 10 minute non-peak headways





**Josh Brown**  
jbrown@psrc.org

**Thank you.**

