



WEBER STATE
UNIVERSITY

Policies & Procedures Development
Administrative Rules Review Committee
July 31, 2017



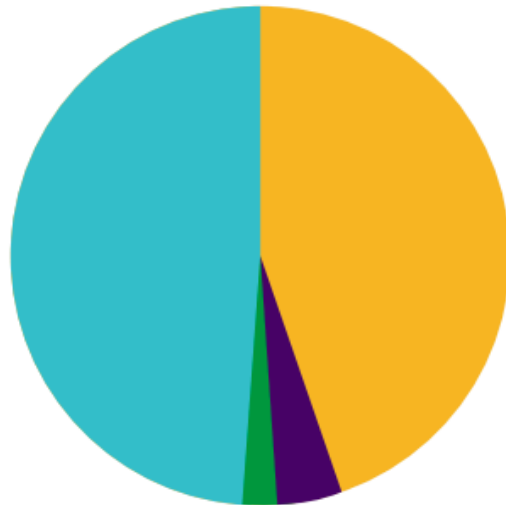
What is Weber State University?



WEBER STATE UNIVERSITY

2015-16

DEGREES & AWARDS



Bachelor's : 48.7%

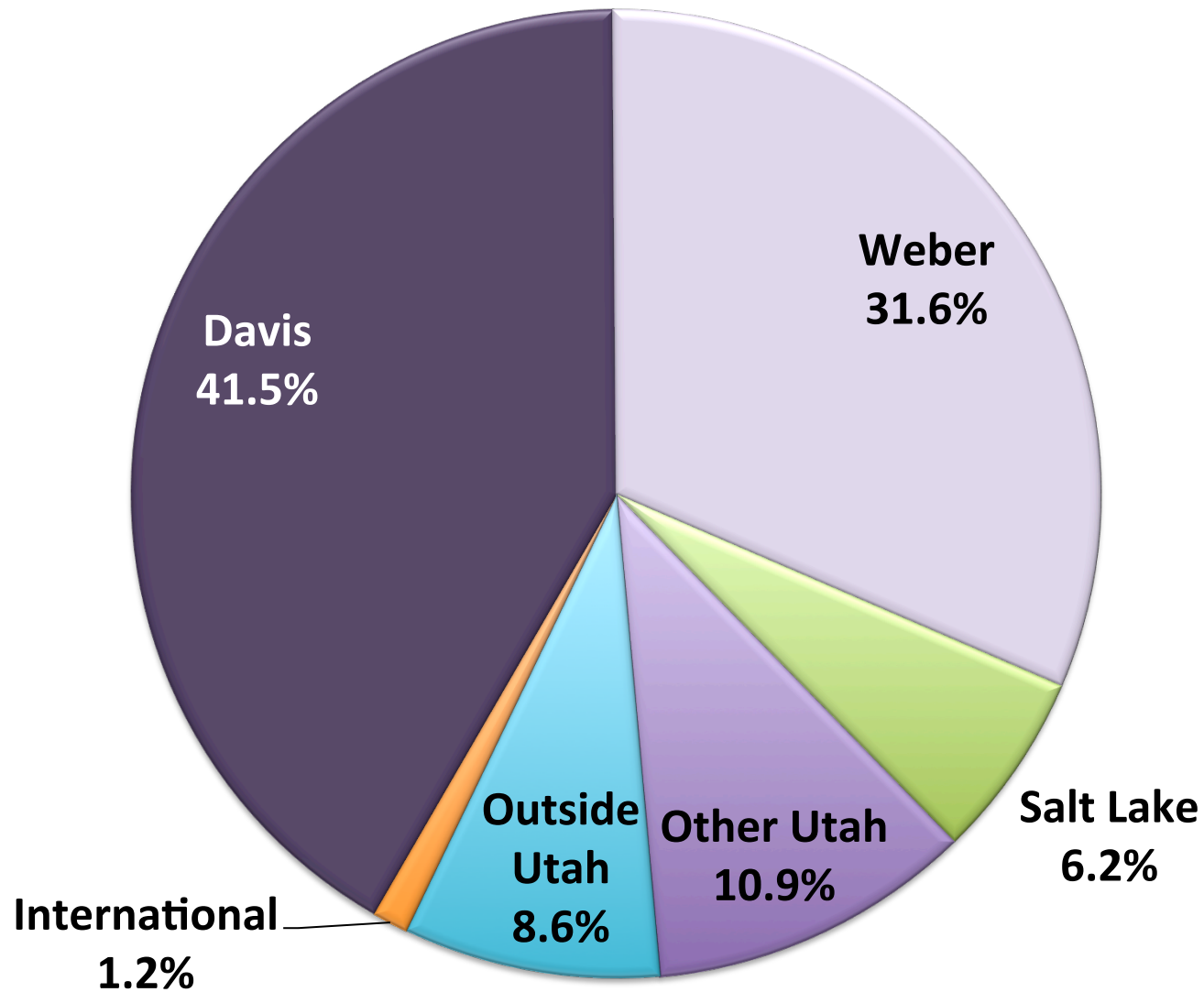
Associate's: 44.1%

Master's: 5.0%

Certificates: 2.2%



Fall 2016 Enrollment by County of Origin



Average starting salary of

\$48,800

highest among all Utah public
colleges and universities

-Smart Asset



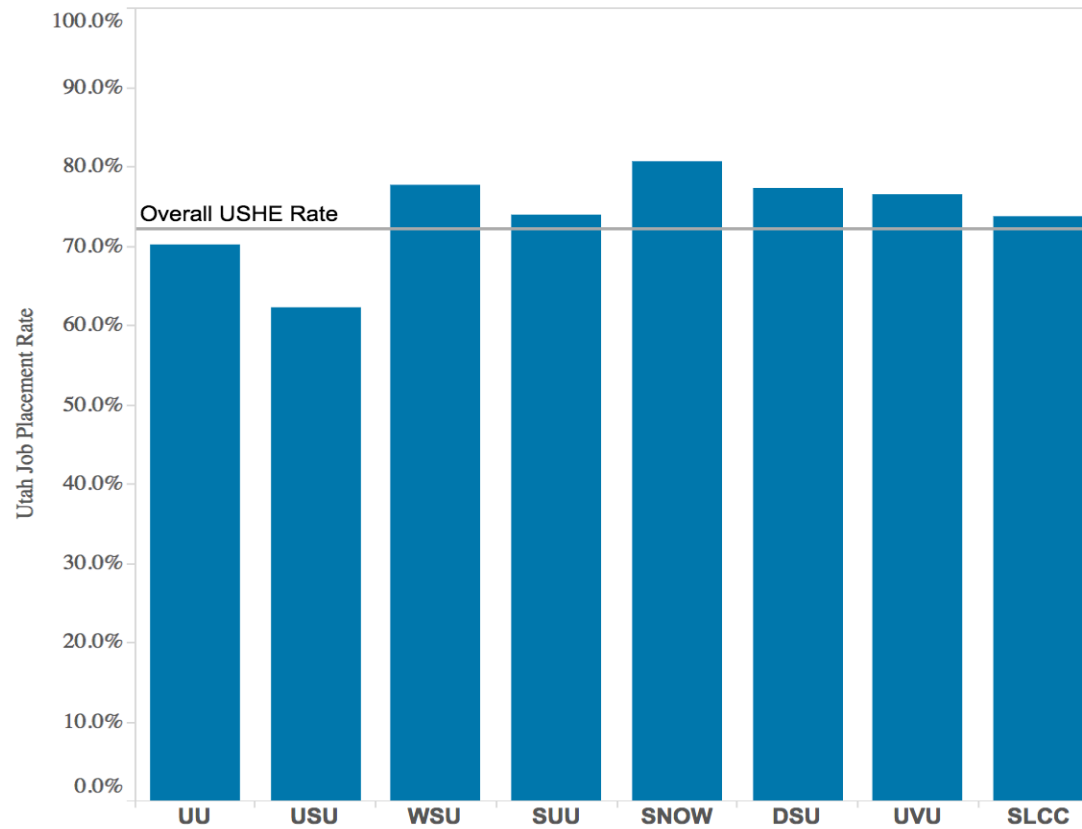
WEBER STATE UNIVERSITY

Job placement rates of USHE graduates – by degree type and discipline

The percentage of USHE graduates in 2014-15 employed in 2016, according to the Department of Workforce Services.

Select Type of Degrees Select an Area of Study

Select an Institution



Source: <https://higheredutah.org/data/job-placement/>



WEBER STATE UNIVERSITY



TOP 10

DEGREE
PROGRAMS

5-YEAR
TOTAL

Academic Years
2012 through 2016

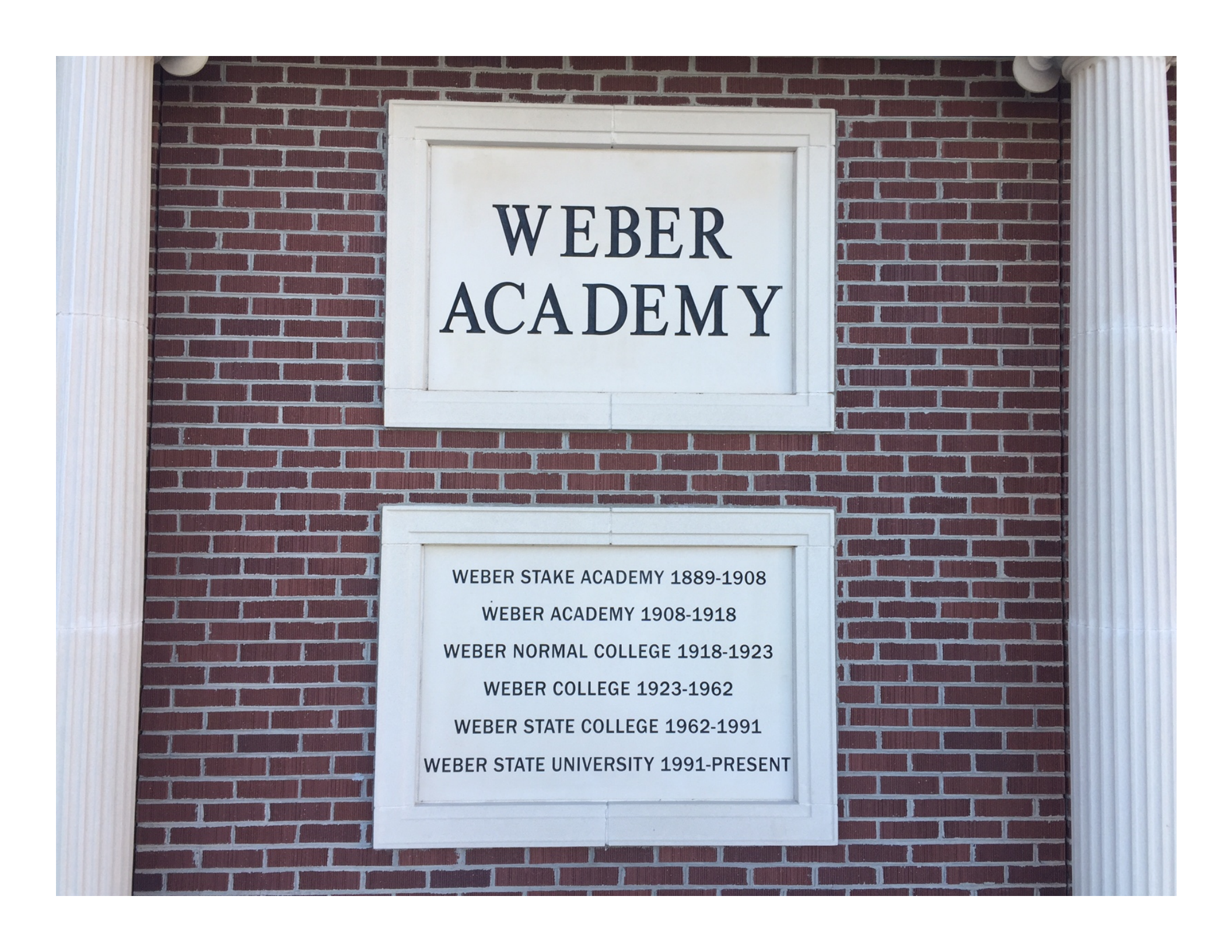
1	Nursing	3,411
2	Radiologic Sciences	1,144
3	Business Administration	1,125
4	Computer Science	785
5	Criminal Justice	726
6	Medical Laboratory Sciences	689
7	Engineering Technology	676
8	Accounting/Taxation	673
9	Health Promotion and Human Performance	667
10	Health Administrative Services	649



WEBER STATE UNIVERSITY



WEBER STATE UNIVERSITY



WEBER ACADEMY

WEBER STAKE ACADEMY 1889-1908
WEBER ACADEMY 1908-1918
WEBER NORMAL COLLEGE 1918-1923
WEBER COLLEGE 1923-1962
WEBER STATE COLLEGE 1962-1991
WEBER STATE UNIVERSITY 1991-PRESENT

Ogden Standard-Examiner

OGDEN, UTAH, WEDNESDAY EVENING, NOVEMBER 3, 1954

A bill passed by a special legislative session in December, 1953, to transfer Weber, Snow and Dixie colleges to the Latter-day Saints Church for operation failed by at least 40,000 votes in a referendum.



WEBER STATE UNIVERSITY

Shared Governance

- President
 - WSU Student Association/Student Senate
 - Faculty Senate
 - Staff Advisory Committee
 - WSU Alumni Association
 - Dean's Council
 - President's Council
- WSU Board of Trustees
- State Board of Regents



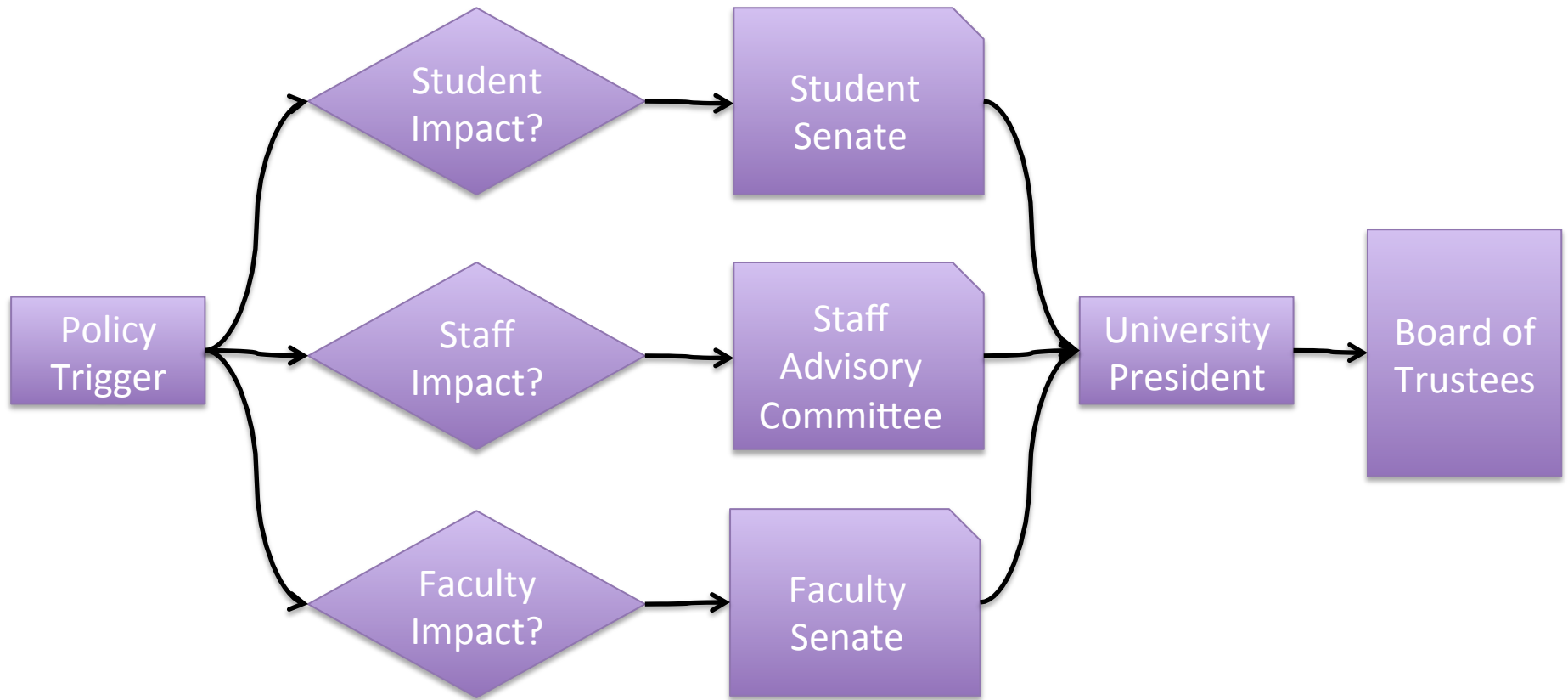
Policy Triggers

(for revisions/new policies)

- Federal legislation/regulations
- State legislation
- State Board of Regents policy
- Concerns from campus community
- Legal liabilities/risks
- Need to standardize protocols



Broad-based Participation

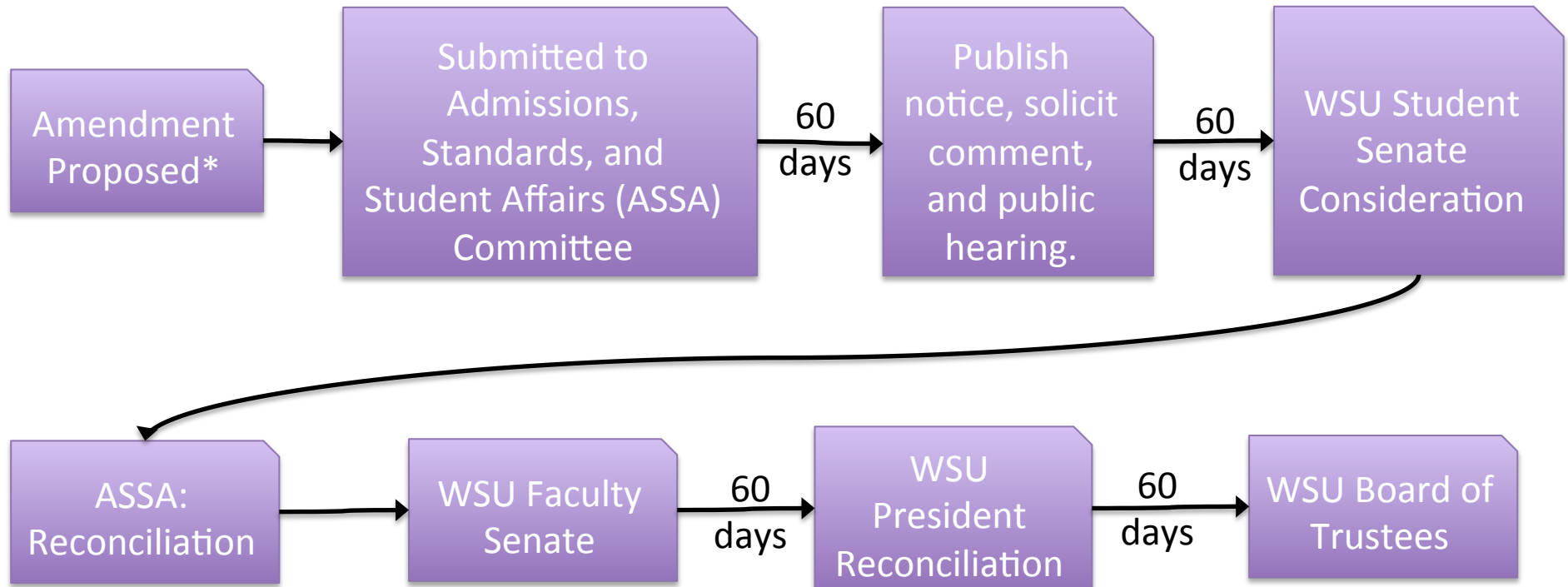


WSU PPM 6-22 – Student Code

Weber State University derives its legal authority from the State of Utah to provide programs and services to students. This authorization, established by the State Legislature, is administered by the Governor and delegated to the State Board of Regents, the Weber State University Board of Trustees, and the Weber State University President. The Weber State University President has the option of delegating specific elements of University authority to various entities including University administrators, faculty, staff, and student governance systems.



Amending Student Code



*May be proposed by Board of Trustees, the President of the University, the Vice President for Student Affairs, the Provost, the Due Process Officer, the Faculty Senate, the WSUSA Student Senate, or by written petition of not less than 250 members of the University community.



WEBER STATE UNIVERSITY

Questions?



WEBER STATE UNIVERSITY