

Drug Penalty Modifications and Impact

- ✓ Drug possession only offenses filed as felony crimes have continued to decrease (Figure 1)
- ✗ Lower level (misdemeanor B) drug cases, however, have risen sharply in recent years

Establishment of a County Jail Risk and Needs Screening Program

- ✓ Almost 62,000 screens have been completed, giving a profile of offender risk and needs at booking (Figure 2)

Increased Investment in Substance Use and Mental Health Treatment for Offenders

- ✓ Significantly more justice involved clients were served in substance use treatment in FY2017 (Figure 3)
- ✓ Significantly more justice involved clients were also served in mental health treatment in FY2017 (Figure 4)
- ✗ Much of the increase for both types of treatment was the result of a rebound after initially falling in FY2016

Significant Changes to Sentencing Guidelines and Criminal History Scoring

- ✓ Fewer felony offenders fall in the area of the Sentencing Guidelines matrix that recommends prison
- ✗ Pre-sentence recommendations, judge sentencing, and ultimate custody in Corrections, however, did not change much as a share of total felony cases

Focus Prison Beds on Serious and Violent Offenders

- ✓ The prison population is meeting its projections (Figure 5), mostly due to fewer nonviolent offenders
- ✓ Prison length of stay has declined for probation and parole violators, and similarly across most nonviolent offenders newly committed from the Court (Figure 6)
- ✗ Prison admissions exceeded releases in FY2017, and most of these were admitted from parole or probation

Strengthen Parole and Probation Supervision and Hold Offenders Accountable

- ✓ Growth in the population Adult Probation & Parole is supervising has slowed, particularly on probation (Figure 7)
- ✓ The supervision population is shifting to a higher level of risk (to recidivate) overall as fewer low risk offenders are being supervised
- ✗ More offenders are re-starting parole after a previous parole revocation

Protect Public Safety

- ✓ Violent and property crime rates have remained flat or decreased according to several key indicators (crime reports, arrests (Figure 8), and court case filings)

Figure 1. Drug possession only cases filed.

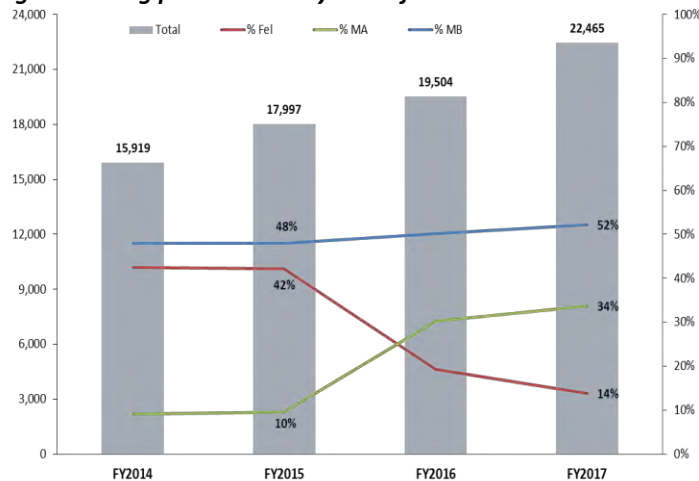


Figure 2. Risk and needs breakdown for all jail screens.

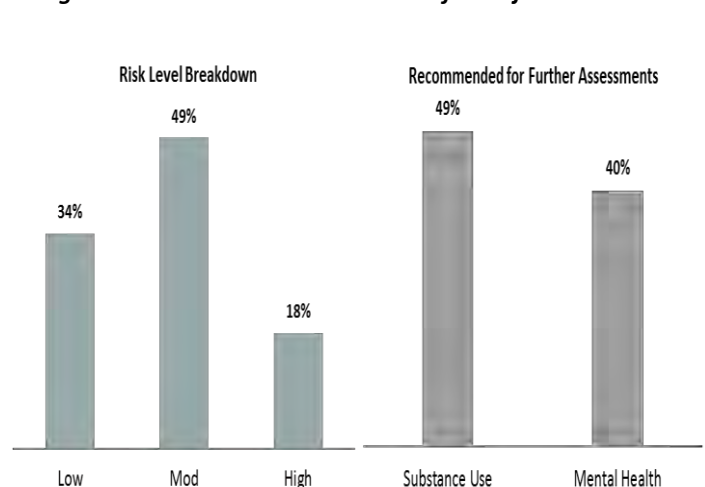


Figure 3. Justice involved clients served/admitted – substance use.

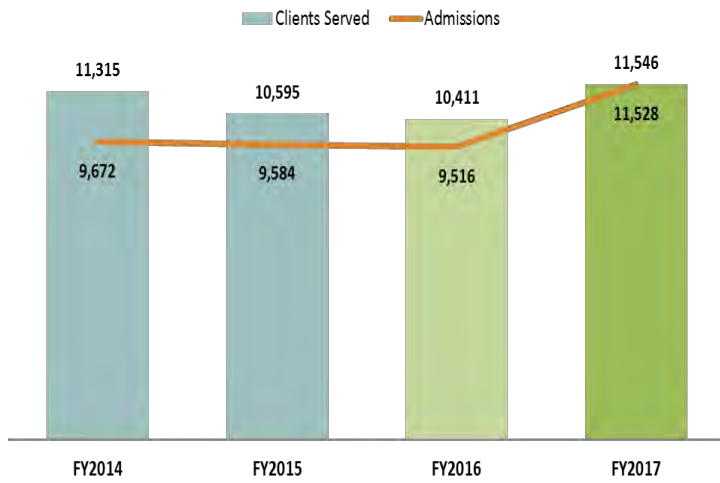


Figure 4. Justice involved clients served – mental health.

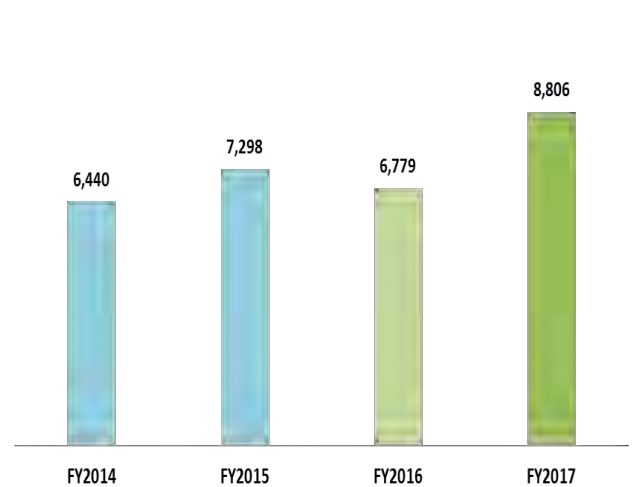


Figure 5. Utah prison population – actual vs. projected.

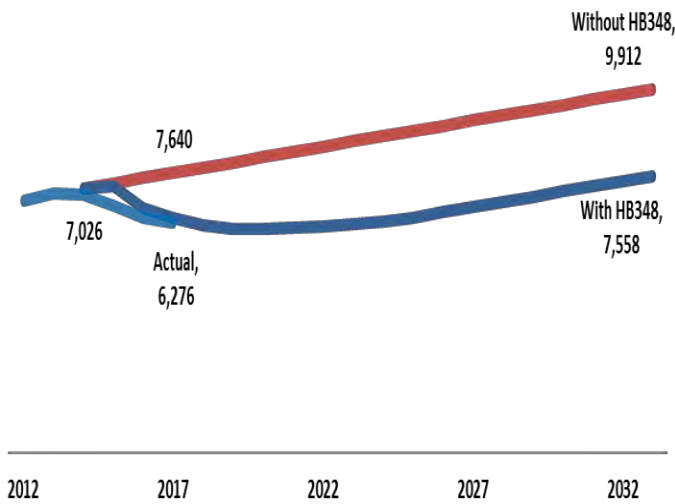


Figure 6. Length of stay in prison (months) by offense.

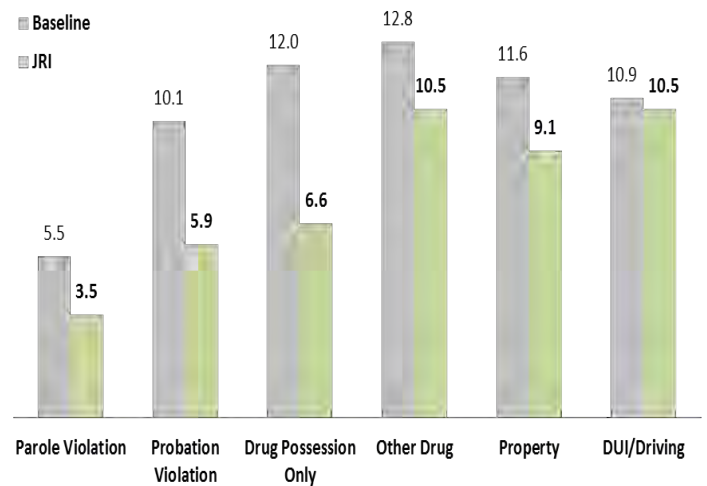


Figure 7. Adult Probation & Parole average yearly supervision population, overall and by type.

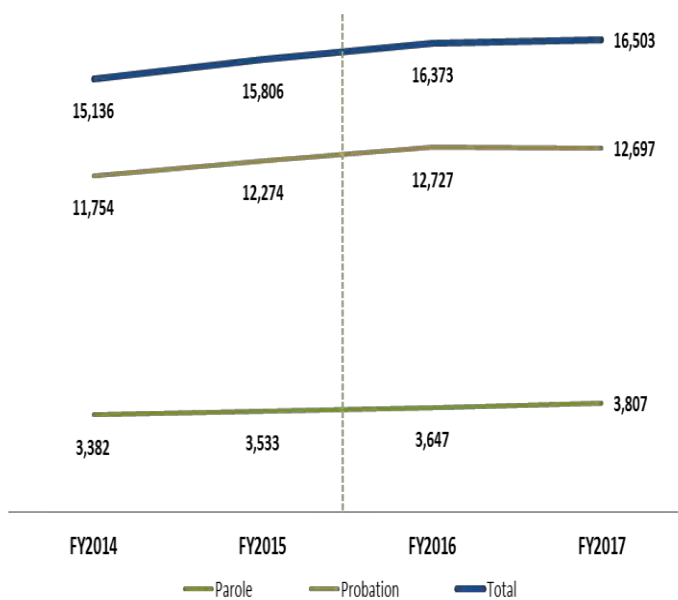


Figure 8. Arrest rates (per 100,000 population) by offense type.

