



# CAPITAL CAMPAIGN



For a quarter of a century, Youth Impact of Ogden has worked to teach its participants respect, responsibility and integrity while providing a safe place where they can receive education assistance and life-skills encouragement. This community-driven program produces educated, college-bound and job-attained youth who become productive and successful citizens in our society.

On its 25th anniversary, Youth Impact is expanding its existing facility to meet the ever-increasing demands for its educational programs, including a K-12 study hall, Read-and-Respond Program, and Career and College Ready Curriculum. The most cost-effective expansion is a new multipurpose structure while remodeling the existing space into classrooms. The expanded facilities will provide adequate learning environments for program participants who are supervised by Youth Impact's experienced educators who promote academic performance and growth. Youth Impact's staff works closely with schoolteachers and counselors to ensure every student is completing required school assignments and meeting school attendance requirements.

The majority of youth we serve come from challenging, at-risk circumstances. At Youth Impact, they are afforded highly-supported opportunities to flourish.

- The program has an average enrollment of 200, with a daily attendance averaging 110.
- The population is made up mostly of Ogden School District students, with approximately 5 percent of participants living in the Weber School District.
- Eighty-three percent of participants qualify for free or reduced school lunch rates.
- Weber State University and the Ogden community provide over 300 volunteers, contributing more than 10,000 hours annually in program support.

Youth Impact participants continually exceed performance averages compared with the Ogden School District's overall attendance, citizenship and graduation rates.

Performance Averages	Youth Impact	Ogden School District
School attendance	97.6 percent	89 percent
Average GPA for high school students	3.56	2.27
Graduation rate	90 percent-plus	74 percent

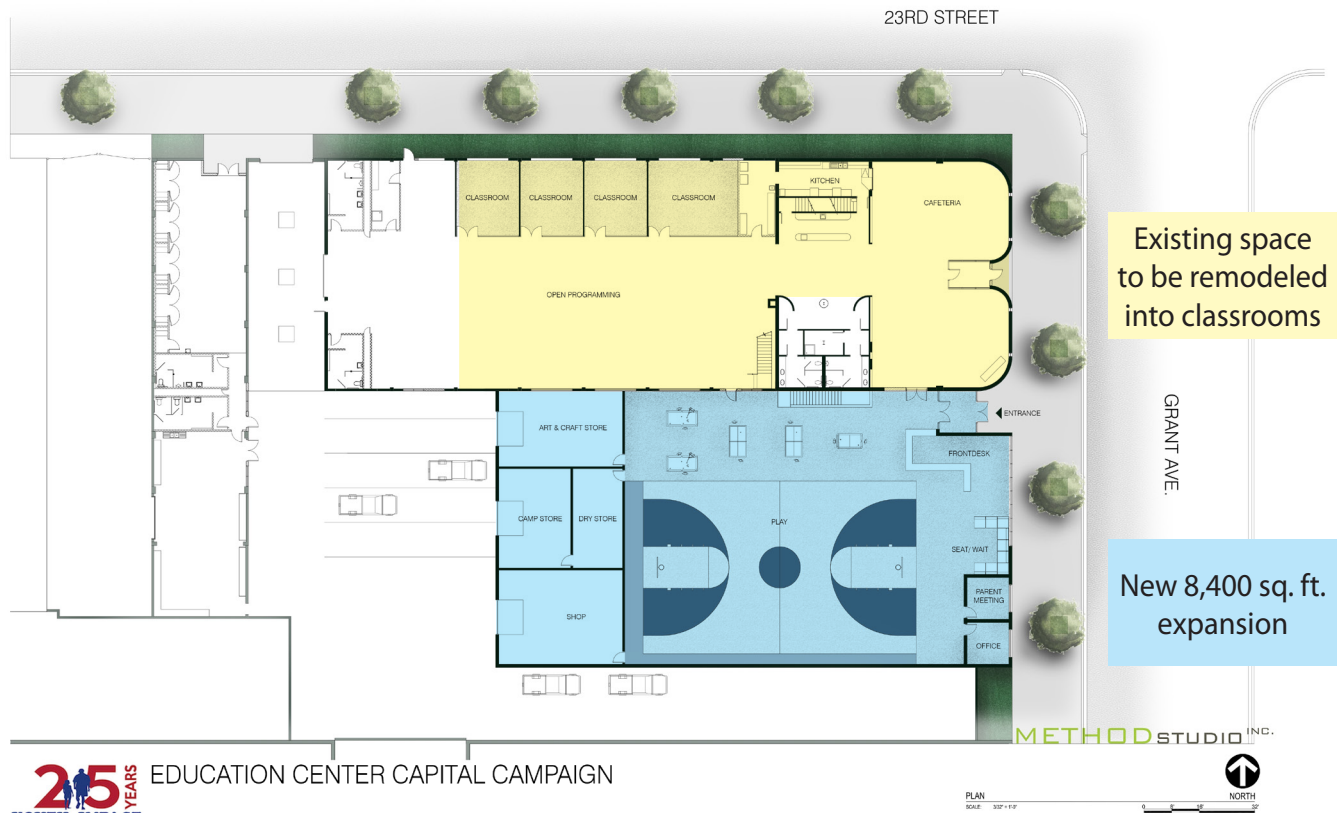
Success of Youth Impact participants is evidenced by:

- Thirty-two high school participants have part-time jobs and/or are enrolled in AP courses and involved in school-sponsored extracurricular activities.
- Two Youth Impact participants are college graduates; one now working for Intermountain Healthcare as a respiratory therapist and another working as a software engineer on fighter jets at Hill Air Force Base.
- Recent participants are now attending colleges and universities, including Weber State, Utah Valley, Dixie State, Snow and local ATCs. Others have full-time professional trade employment.

As part of Youth Impact's mission to promote community service, Youth Impact enrollees are required to participate in community projects and have provided Ogden City with an average of 1,700 hours of community service per year over the last four years.

Youth Impact's Capital Campaign—marking 25 years of developing strong students through changing lives—is now asking for the community's support. For information on how you can help, please go to [www.youthimpactogden.org](http://www.youthimpactogden.org) or contact any board member.

# CAPITAL CAMPAIGN



25 YEARS YOUTH IMPACT EDUCATION CENTER CAPITAL CAMPAIGN

METHODSTUDIO INC.



25 YEARS YOUTH IMPACT EDUCATION CENTER CAPITAL CAMPAIGN

METHODSTUDIO INC.



25 YEARS YOUTH IMPACT EDUCATION CENTER CAPITAL CAMPAIGN

METHODSTUDIO INC.

**Scheduled completion December 2018**

**VIRGIL TOLLER, Chair**

Bonneville Collections, 801-395-8893, virgil@bonnecoll.com

**CARI FULLERTON, Capital Campaign Chair**

Bank of Utah, 801-391-3600, cfullerton@bankofutah.com

**JEFF VONCOLLN, Past Chair, Building Committee Chair**

VonColln Financial Service, 801-391-8500, Jeff.voncolln@lpl.com

**MARK SHENEFELT, Marketing Committee Chair**

Standard Examiner, 801-452-1614, mshenefelt@standard.net

**JEFF KEMP, Vice Chair, Building Committee**

Boman Kemp, 801-721-4488, jeff-kemp@boman-kemp.com

**MARCY KORGENSKI, Secretary, Fundraising Committee**

Retired, 801-940-6168, mkorgen@msn.com

**TRAVIS VADNAIS, Treasurer, Fundraising Committee**

Eide Bailly, 801-710-7939, tvadnais@eidebailly.com

**KEN SHINAUT, Past Chair, Building Committee**

Boman Kemp, 801-540-8033, ken-shinaut@boman-kemp.com

**JIM PATTERSON, Past Chair, Fundraising Committee**

Retired, 801-725-5514, jim@yourvalet.com

**BRENDA KOWALEWSKI, Marketing Committee**

Weber State, 801-452-1395, bkowalewski@weber.edu

**EILEEN NICHOLAS, Fundraising Committee**

801-834-1947, emnicholas@gmail.com

**SHERI MORGAN, Fundraising Committee**

801-479-0886

**PAUL OLDS, Building Committee**

Attorney, 801-394-7704, paul@pauloldslaw.com

**NALLELY RUIZ, Marketing Committee**

OWATC, 801-528-8462, ruizn@owatc.edu

**VALERIE TRUJILLO, Marketing Committee**

Century 21, 801-389-6480, utahval@gmail.com

**ROBB HALL, Youth Impact Executive Director**

801-941-0700, Robb.Hall@youthimpactogden.org

**NICOLE HALL, Youth Impact Finance Director**

801-628-7335, Nicole@youthimpactogden.org

**IMPACTOR OPPORTUNITIES**

**Building Naming Rights \$250,000**

New Education Center and Fieldhouse

**Four Classrooms (per classroom) \$50,000**

Grade level designation

**Kitchen/Food Service \$50,000**

Provides daily meals for 125-200 kids

**Lobby-Entry \$25,000**

Secure access entry for students and staff

**Bike and Hobby Shop \$25,000**

Bike maintenance area for staff and students

**Student lounge/social area \$25,000**

Couches, lounge area

**Technology Partner \$25,000**

Computers, projector, internet for classrooms

**Fieldhouse-Basketball \$10,000**

Basketball standards

**Fieldhouse-Softball \$10,000**

Batting cage

**Outdoor recreation area \$10,000**

Tables, pergola/shade

**Classroom Furnishings \$10,000**

Tables, chairs, desk

**Conference Room \$10,000**

Table, chairs

**Staff Offices \$10,000**

Desks, chairs, work cabinets

**Classroom Softgoods \$10,000**

Software, white boards etc.

**INDIVIDUAL DONATIONS**

**Impactor \$5,000 to \$9,999**

**Community Builder \$2,500 to \$4,999**

**Supporter \$1 to \$2,499**

**IN KIND DONATIONS**

Building Materials, Labor, School Items