



UINTAH BASIN TECHNICAL COLLEGE

A presentation to the:
Utah State Legislature
Higher Education Appropriations Subcommittee
Friday, February 1, 2019

Aaron K. Weight
President / CEO UBTECH

STRATEGICALLY ALIGNED AND **MISSION DRIVEN**

UBTech Strategic Plan

2019-2021

*Program Growth
Through
Connectivity*

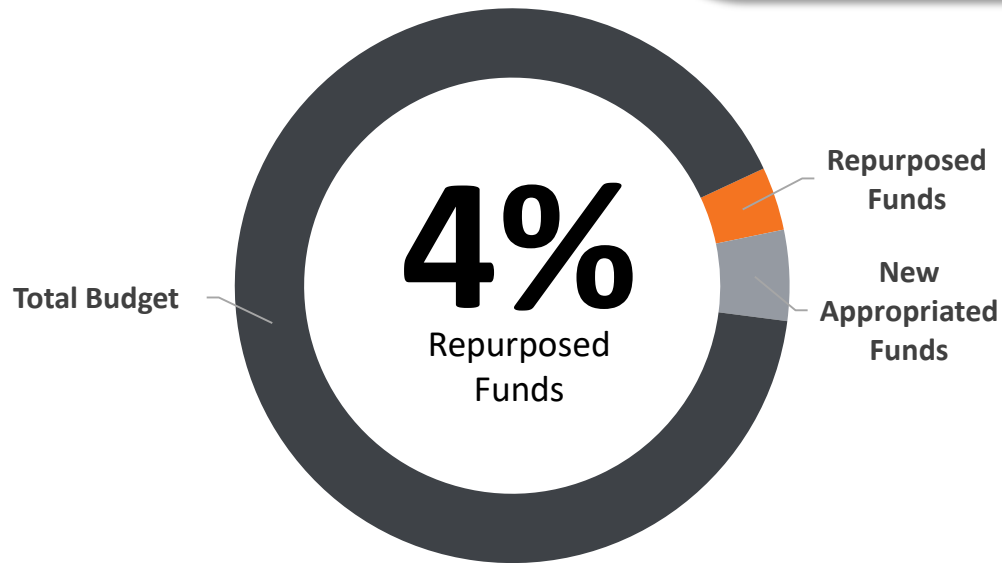
UBTech Mission:

The Mission Of Uintah Basin Technical College (UBTech) is to:

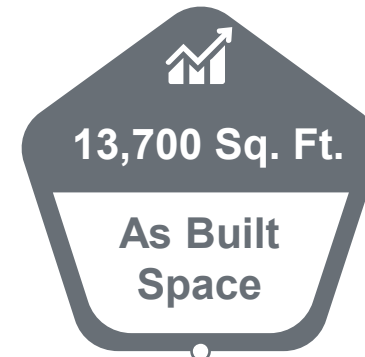
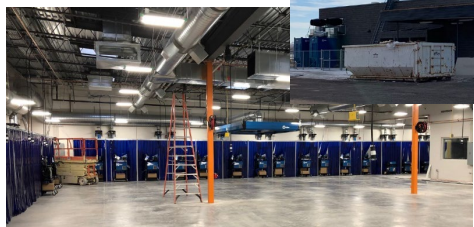
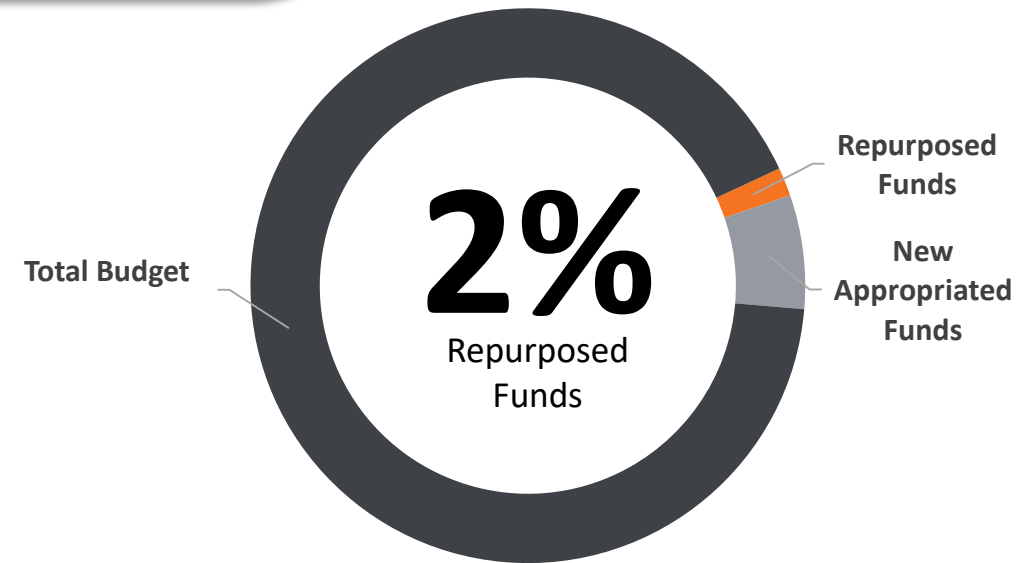
1. Provide Technical Education and Training For Secondary and Adult Students
2. Fulfill Labor Market Needs
3. Promote Economic Development in the Uintah Basin

LEGISLATIVE SUPPORT IS THE DIFFERENCE

FY18



FY19



UBTech Welding Technology Building

CURRENT RETURN ON INVESTMENT

FY18

Automotive Programs	Percentage
Certificate Completers	↑ 17%
Post-Secondary MHrs	↑ 11%



Welding Programs	Percentage
Certificate Completers	↑ 21%
Total MHrs	↑ 20%



FY19



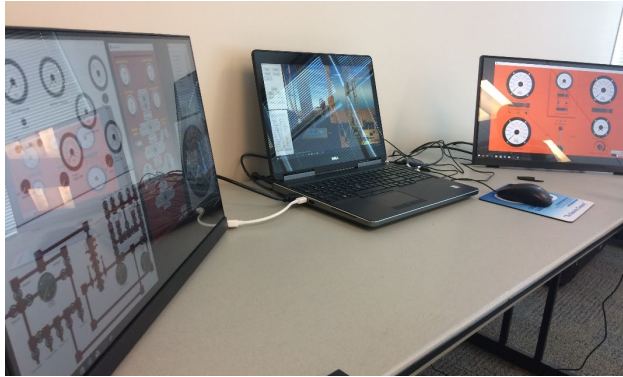
IT Programs:
Full Programs and Waiting List



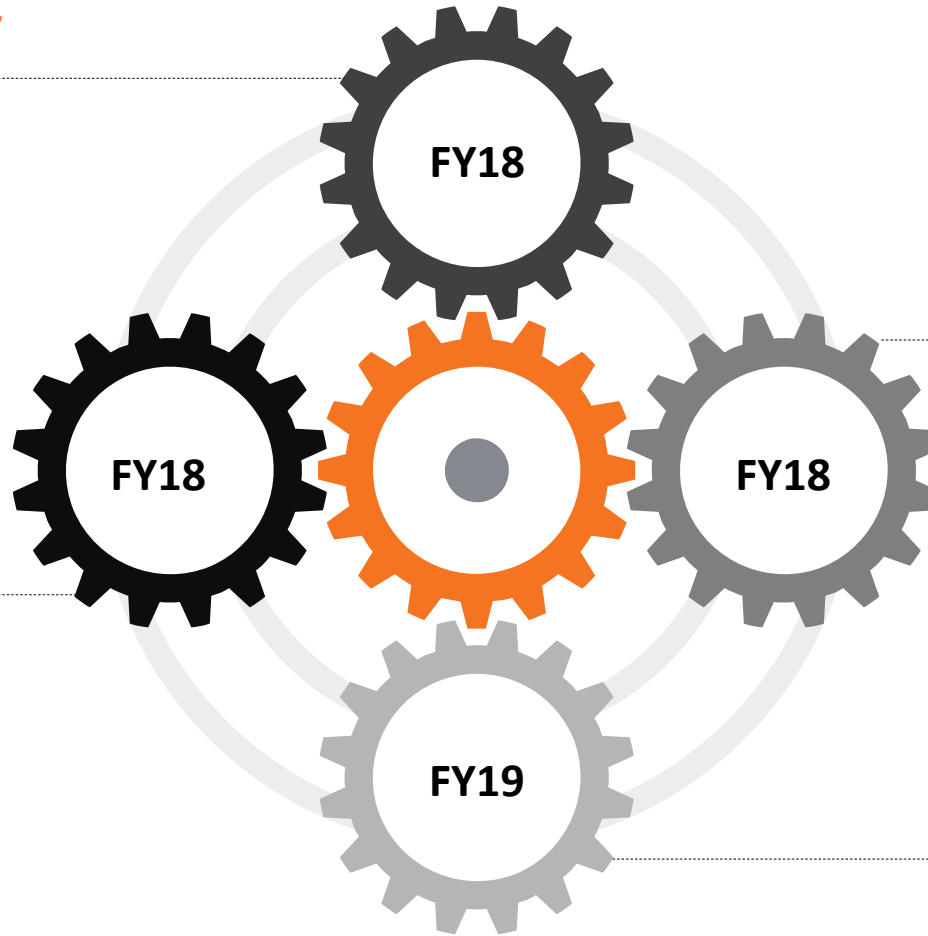
Surgical Technologist:
Full Program and Waiting List

EQUIPPING UBTECH STUDENTS

Well Control Supervisor



Cabinetry



Automotive Programs

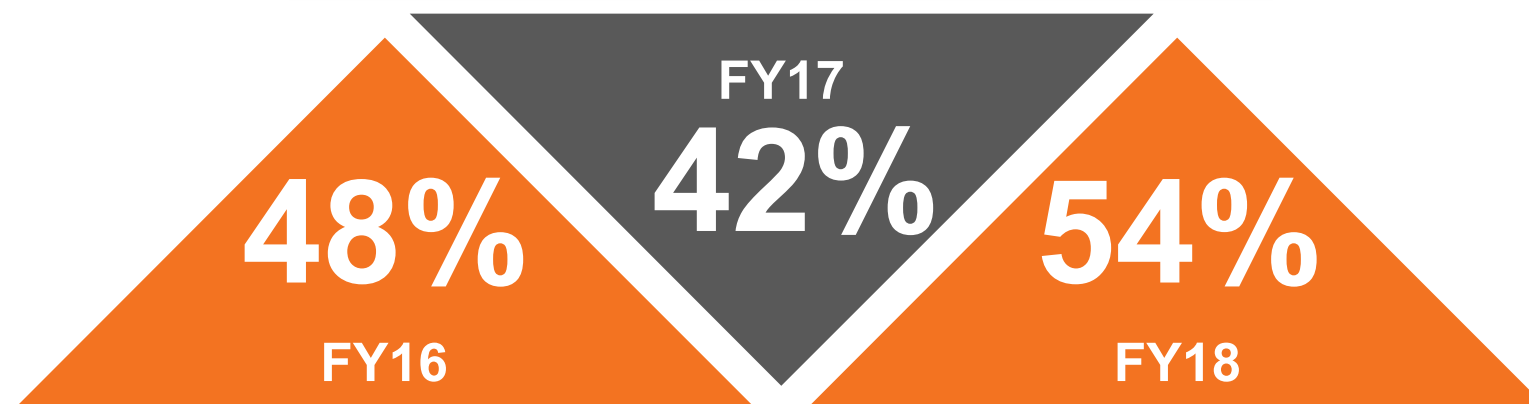


Health Professions

REGIONAL SECONDARY STUDENTS

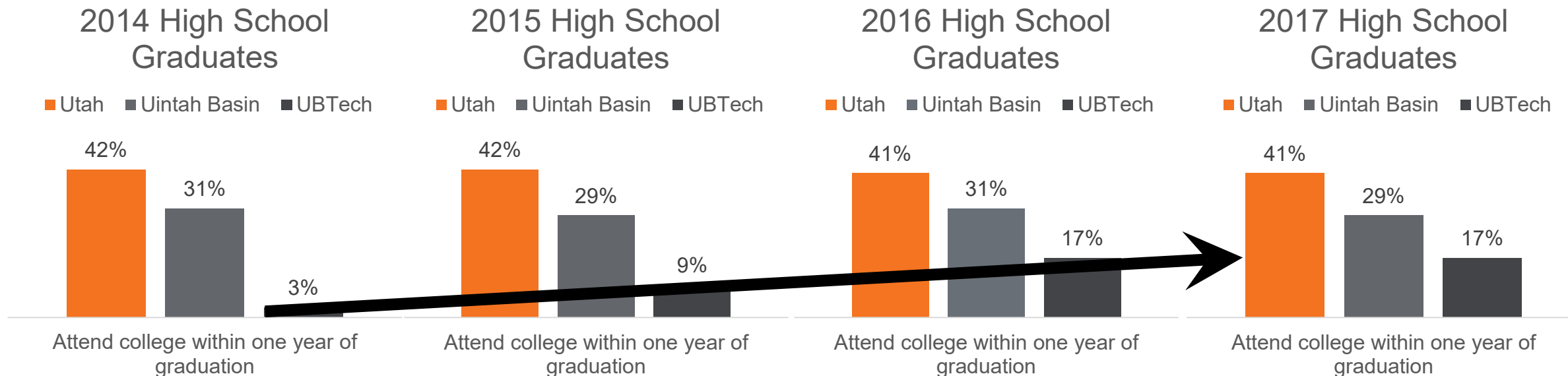
Year	Underclassmen	Seniors	Total Secondary Students	Total Secondary Certificate Completers
FY16	1237	347	1584	168
FY17	1258	377	1635	158
FY18	1337	346	1683	188

Percentage of Senior Completers



UINTAH BASIN HIGHER EDUCATION TREND

Utah & Region data from USHE Annual High School Feedback Report
UBTech data from internal UBTech reports



- Strategic internal & external recruitment
- Improved scheduling practices
- Enhanced scholarship opportunities



LOCAL STUDENT PIPELINE CHALLENGES



*Regional DWS Office

FOCUS ON TECHNICAL EDUCATION

What is the monetary value of a technical education?



Program Name	Est. Cost	Hours	Salary Range
I.T. Support Technician	\$1,260	600	\$32,530-\$75,170



Program Name	Est. Cost	Hours	Salary Range
Auto Technology	\$3,291	990	\$20,650-\$56,250



Program Name	Est. Cost	Hours	Salary Range
Practical Nursing	\$3,390	900	\$28,150-\$48,040

PARTNERSHIPS FOR EVERY PROGRAM

DEVELOP SCHOLARSHIPS



#YOU GOT THIS



10 Year Program Consumables & Supplies – Savings

- \$2,270,000

10 Year Student Scholarships – Contributions

- \$534,000

UBTech

FOCUS
ON STUDENTS

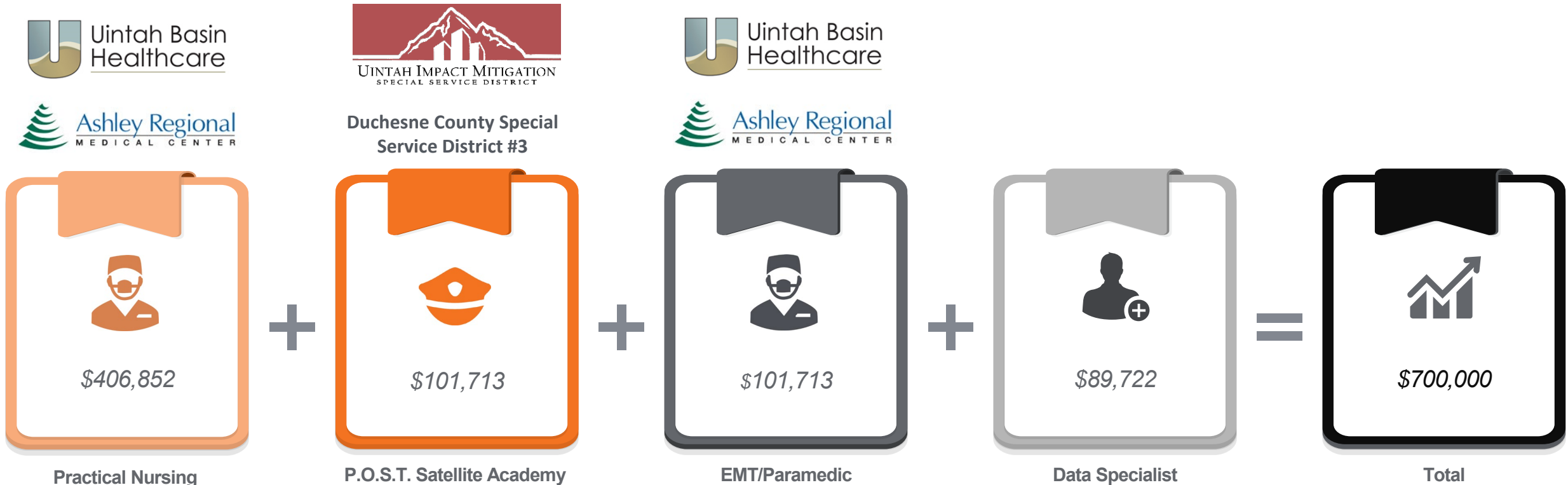
BUILD PARTNERSHIPS



STUDENT OPPORTUNITY THROUGH STACKABLE EDUCATION



UBTECH FY20 LEGISLATIVE REQUEST



UBTECH SUCCESS



Little things makes the big things happen.

- John Wooden



THANK YOU

Questions?