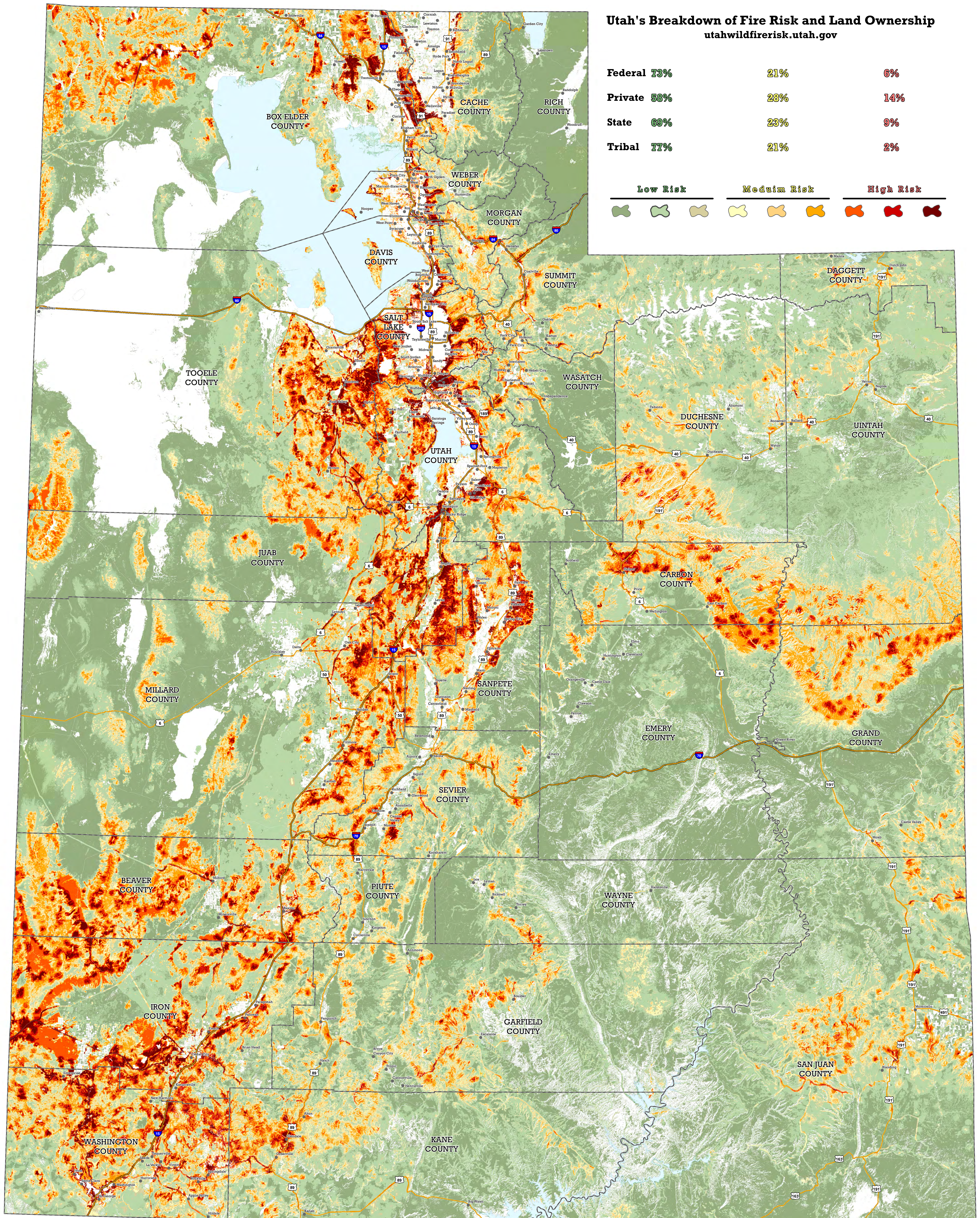


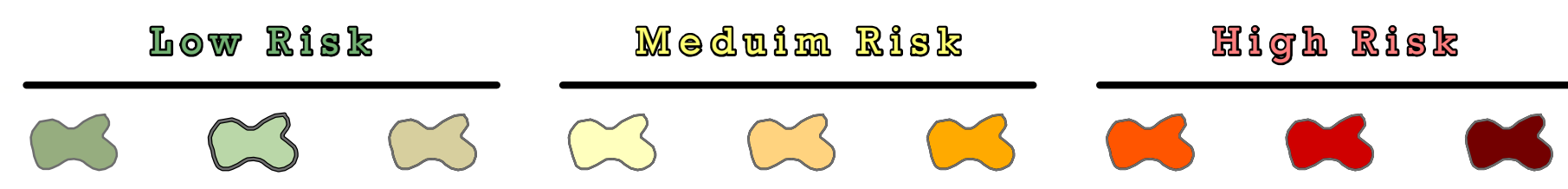
# Utah Wildfire Risk Assessment



## Utah's Breakdown of Fire Risk and Land Ownership

[utahwildfirerisk.utah.gov](http://utahwildfirerisk.utah.gov)

<b>Federal</b>	<b>73%</b>	<b>21%</b>	<b>6%</b>
<b>Private</b>	<b>58%</b>	<b>23%</b>	<b>14%</b>
<b>State</b>	<b>69%</b>	<b>23%</b>	<b>9%</b>
<b>Tribal</b>	<b>77%</b>	<b>21%</b>	<b>2%</b>

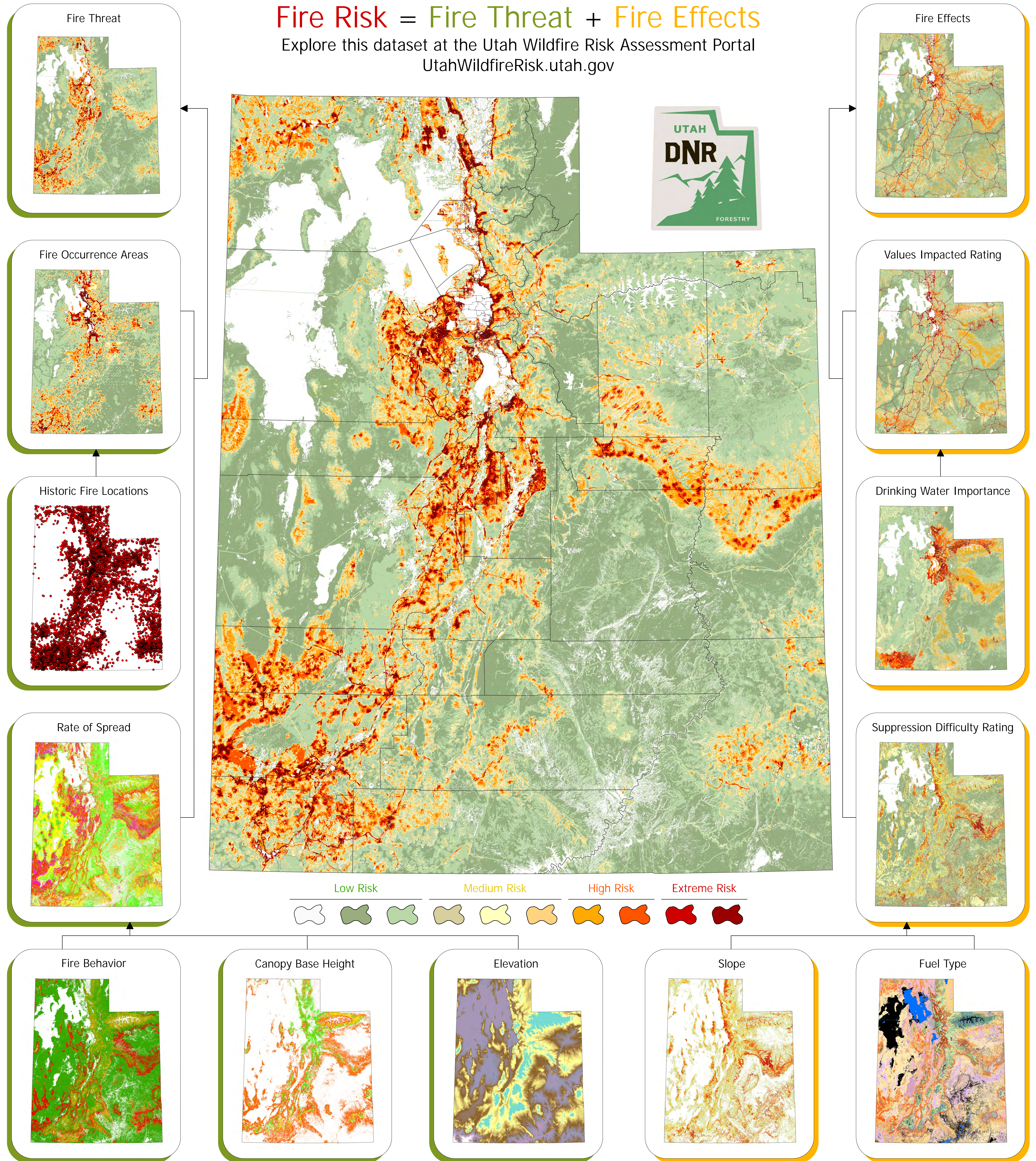


# Is Your Community At Risk From Wildfire?

Utah's Wildfire Risk Assessment: Better Informed Decision Making

$$\text{Fire Risk} = \text{Fire Threat} + \text{Fire Effects}$$

Explore this dataset at the Utah Wildfire Risk Assessment Portal  
[UtahWildfireRisk.utah.gov](http://UtahWildfireRisk.utah.gov)



Cartography by Sean Edwards, Utah Division of Forestry, Fire and State Lands  
 Westwide Wildfire data provided by the Oregon Department of Forestry on behalf of the Council of Western State Foresters with funding from the USDA Forest Service  
 Digital elevation model and boundary data provided by the Automated Geographic Reference Center (AGRC) and the United States Geological Survey (USGS)

