



UPSTART

Kindergarten Readiness for Utah Families
September 2019



Overview:

- 1. Current program enrollment - Waterford*
- 2. UPSTART Evaluation - USBE*
- 3. Engagement of At-Risk Students and Recommendations - DWS*
- 4. Future Program Expansion Options and Costs - USBE*

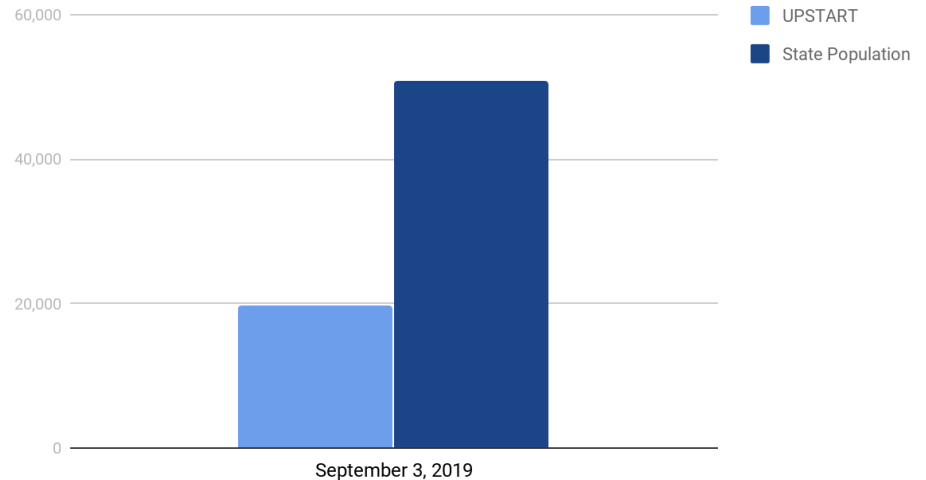


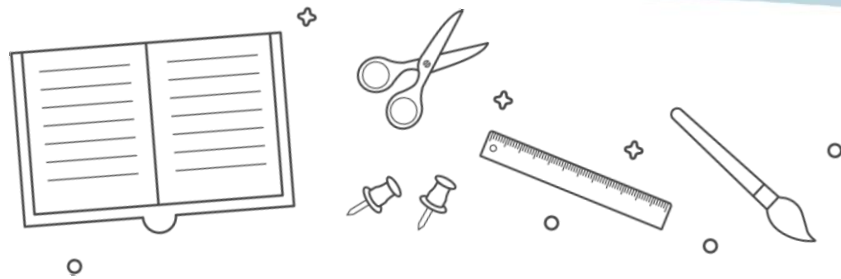
Current UPSTART State Participation - September 2019

As of September 3rd:
19,801 represents 39% of
all 4-year olds in the state
and leaves 31,000
unserved

Utah State Board of Education Projection 4
PRE-K for this current year: 50,807 children

Current UPSTART Service 2019-2020





Timeline for Continued Enrollment 2019

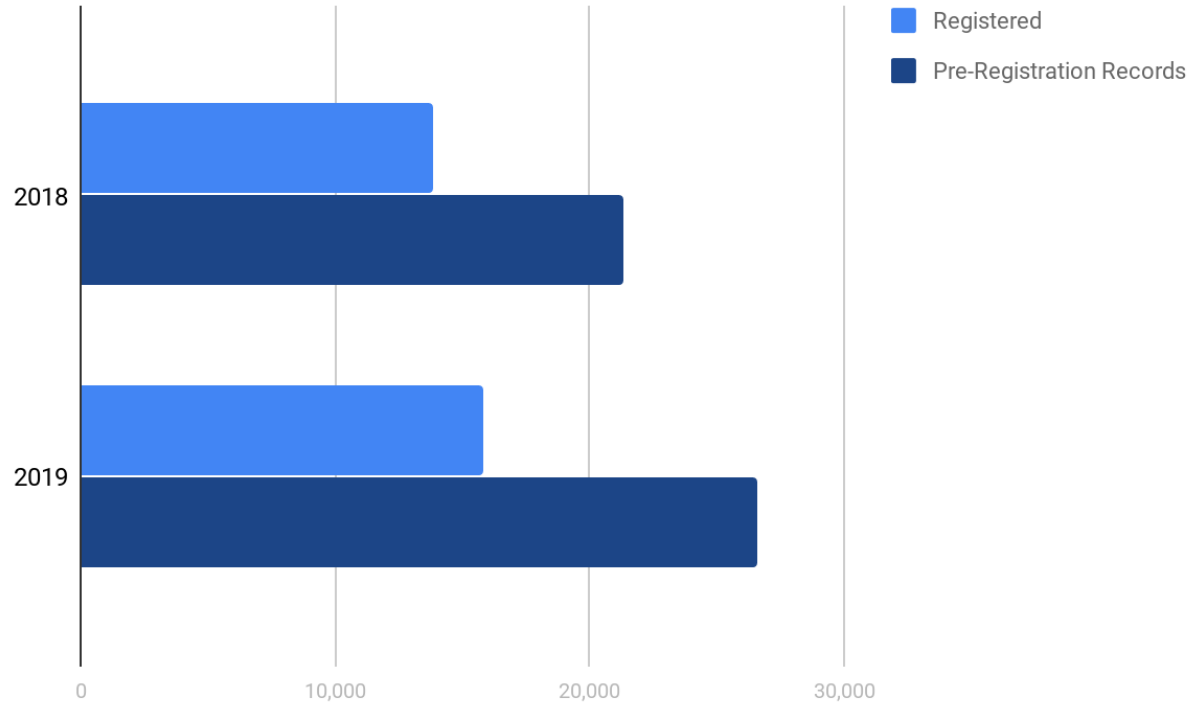
UPSTART enrollments and training continue until the end of October each year to meet the needs of families deciding to seek support for their 4-year-olds beyond the traditional start of school timeline. Fall is one of the busiest enrollment seasons.

Waterford is averaging 500 registrations a week and is on track for a final registration count of **19,801 by October 31, 2019.**



Comparison of 2018 to 2019 Enrollment Conversion

(September 3, 2019; numbers change on a daily basis)



USBE Longitudinal Analysis

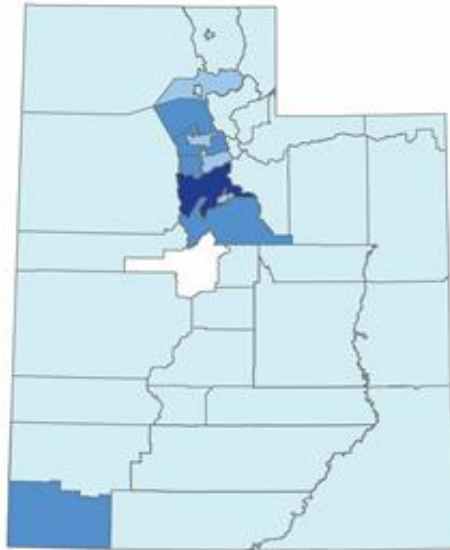
USBE is currently completing a longitudinal analysis that will be completed in October and will include:

- UPSTART students Pre-K to 3rd (Cohort 6)
- Comparison of literacy outcomes of Cohort 6 with students who did not participate in UPSTART
- The effects of UPSTART on literacy outcomes over time

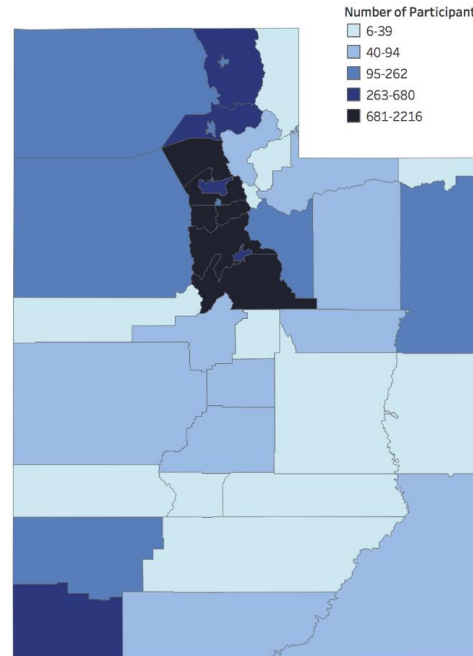


Maps of UPSTART program participation in Year 1 and Year 10

District 4 Year-Olds Participating in UPSTART
Year 1

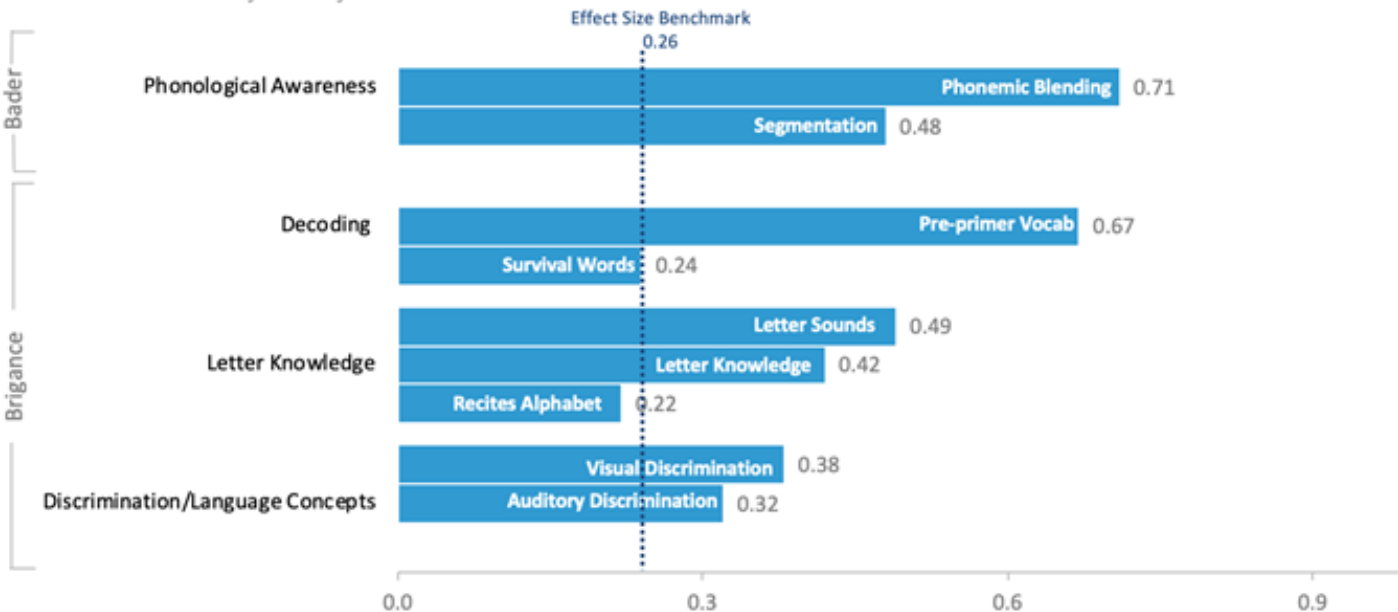


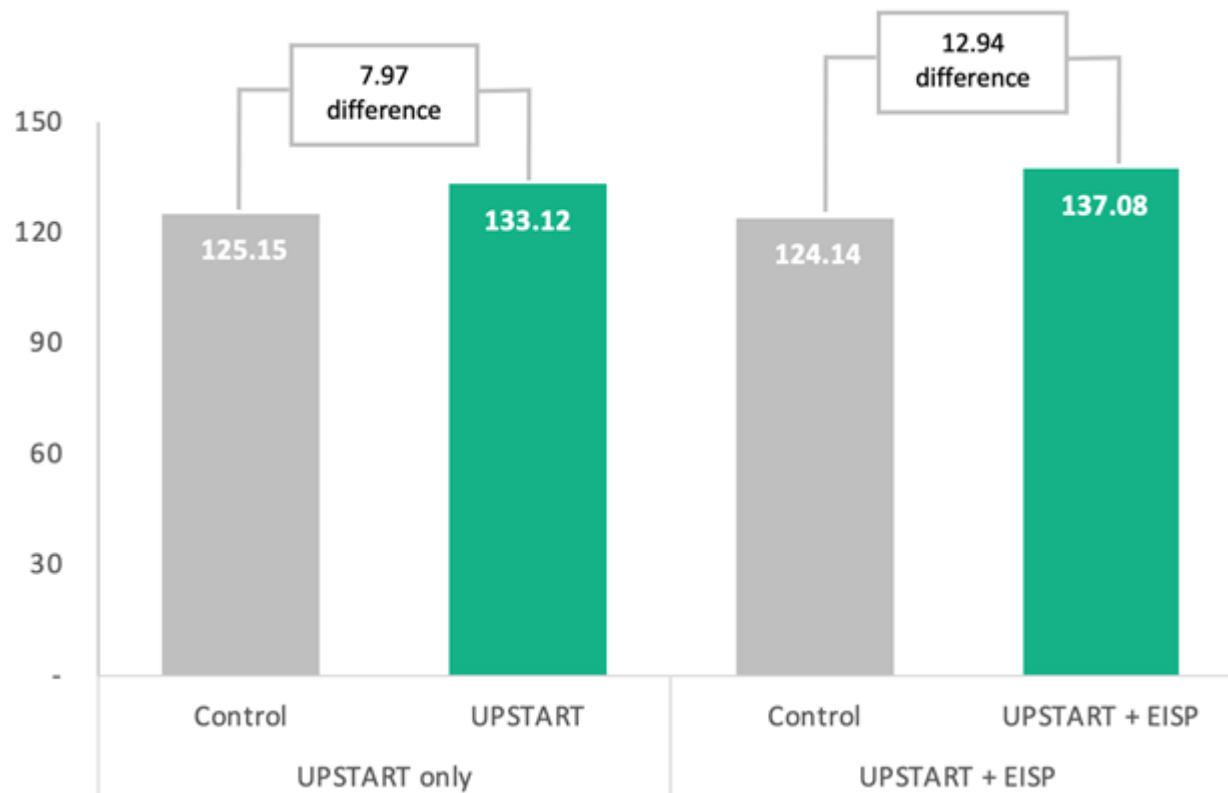
District 4 Year-Olds Participating in UPSTART
Year 10

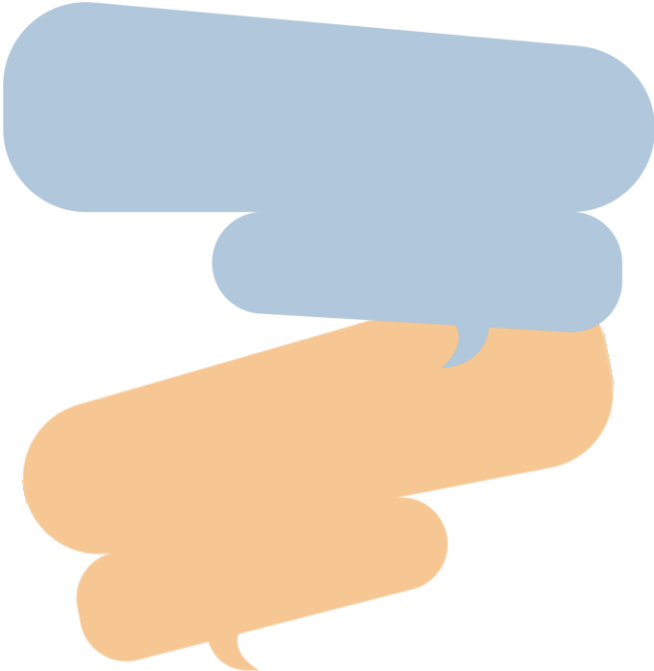


UPSTART had significant impact on a majority of early literacy domains

Effect Size Estimates by Literacy Construct







*Engagement of Students who are
At-risk for Academic Failure and
Recommendations*

*UPSTART and Department of Workforce
Services*

Facilitating outreach to families

Options for UPSTART Expansion

2019 RFP/Contract Requested
Statewide License Costs in
Proposals

- Cost would be \$635 per child for Tier 3 with a statewide access model.
- **Total Cost: \$32,262,445.00**



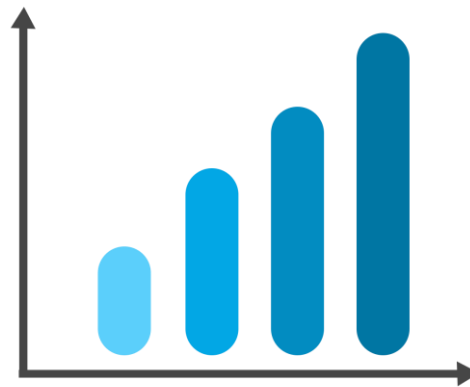
Evaluation of Tiers in Parent Choice Model

Tier 1: UPSTART Software Only

Tier 2: UPSTART with Digital Communication (public and private school option for implementation)

Tier 3: UPSTART with Full Implementation Support

USBE is engaged with external evaluator ETI to evaluate the usage and graduation rates for the tiers to inform statewide license structure.



Questions?

Sarah Young, Implementation Coach, Utah State Board of Education

Claudia Miner, Executive Director and Co-Founder of UPSTART,
Waterford.org

Tracy Gruber, Director of Utah Office of Childcare, Utah
Department of Workforce Services

