

HCR 5

Concurrent Resolution Urging Policies That Reduce Damage From Wildfires

Natural Resources, Agriculture, and Environment
Interim Committee

September 18, 2019

Brian Cottam, Director, Division of Forestry, Fire and State Lands
Paul Corrigan, Interagency Smoke Coordinator
Bryce Bird, Director, Division of Air Quality



PRESENTATION OUTLINE

1. Interagency Fire Management–
Brian Cottam
2. Smoke and Air Quality Subcommittee–
Paul Corrigan
3. Regional Haze State Implementation Plan (SIP)–
Bryce Bird



HCR 5

Be it further resolved that the Legislature and the Governor urge that the Legislature, through the NRAE Interim Committee, work with the executive branch, through the DNR, and their federal counterparts in the US Forest Service to ***find policies that can improve our abilities to effectively use prescribed burns, including options for revising the Regional Haze State Implementation Plan, to allow for easier permitting of prescribed burns during times of the year with low fire risk.***



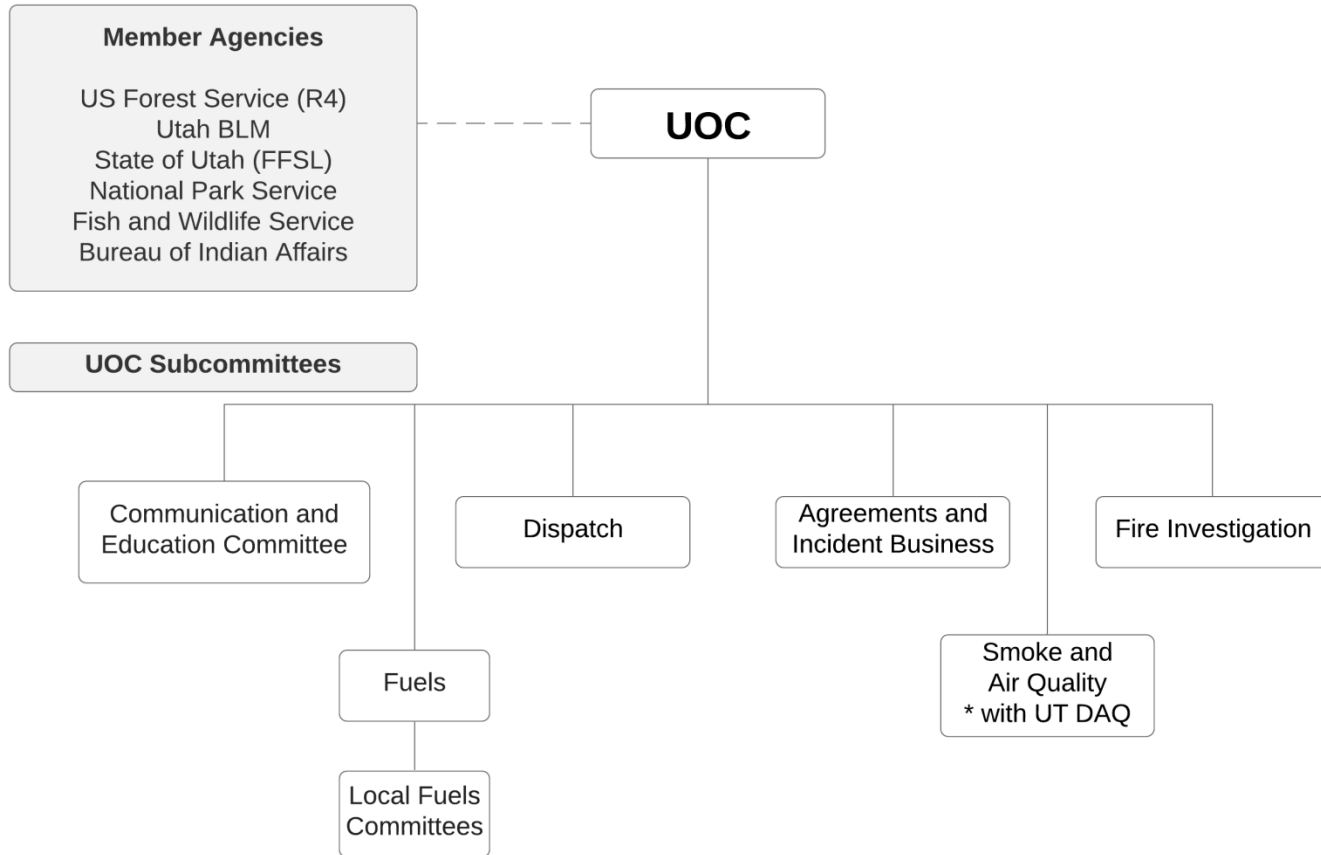
Interagency Fire Management

- Master Agreement
 - ***Utah Oversight Committee***
 - ✓ *Smoke and Air Quality Subcommittee*
 - Regional Dispatch Centers
 - Local Incident Command System (ICS)



Interagency Fire Management

Utah Wildland Fire Interagency Oversight Committee (UOC)



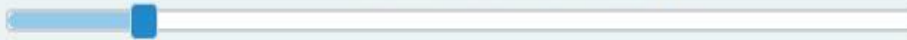
PRESENTATION OUTLINE

1. Interagency Fire Management–
Brian Cottam
- 2. Smoke and Air Quality Subcommittee–
Paul Corrigan**
3. Regional Haze SIP – Bryce Bird





Hourly Daily Avg Daily Max



Time: hr7 - Sep 4, 2019 7:00 AM ▼ MST ▼

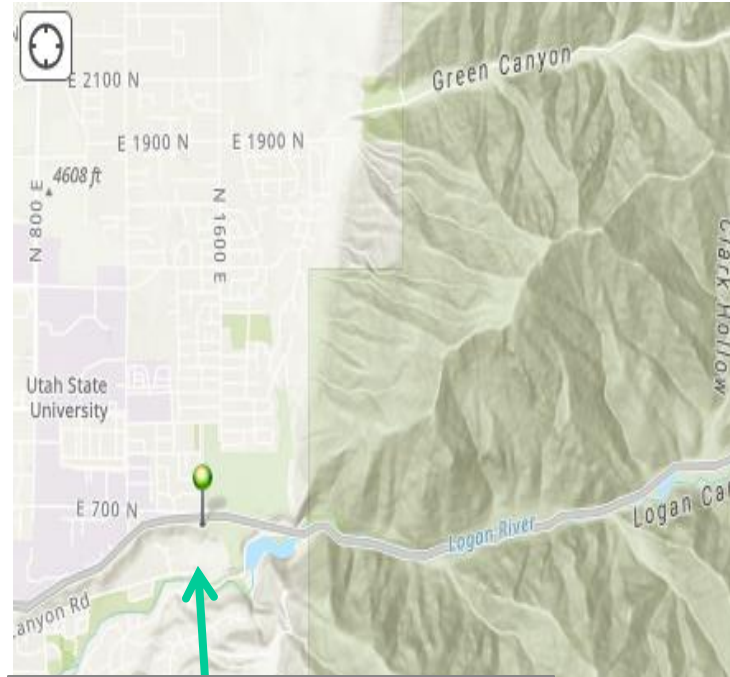


GUARD STATION Card
CACHE National Forest

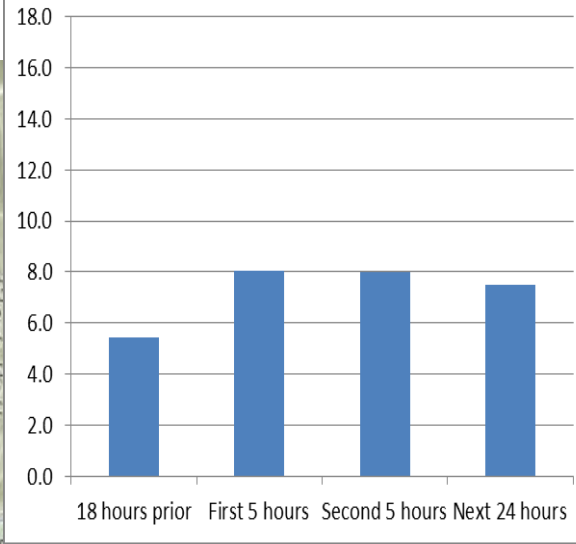
174

174

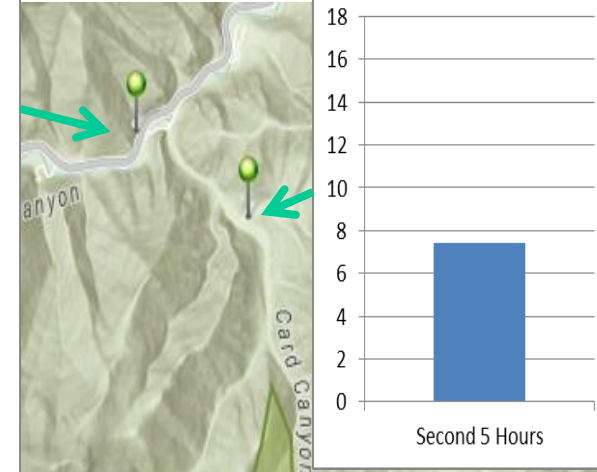
174



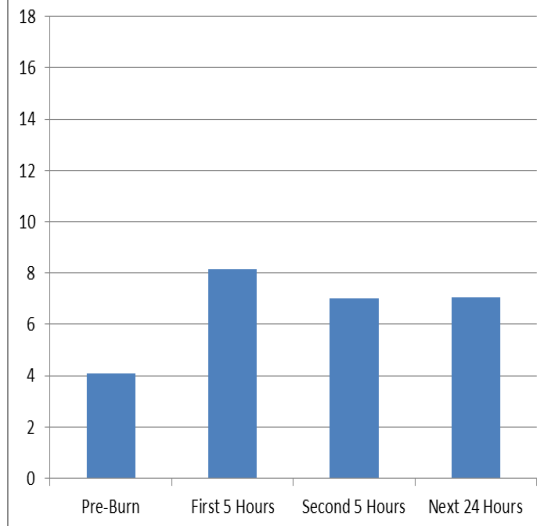
Card Guard MiniVol ug/m3



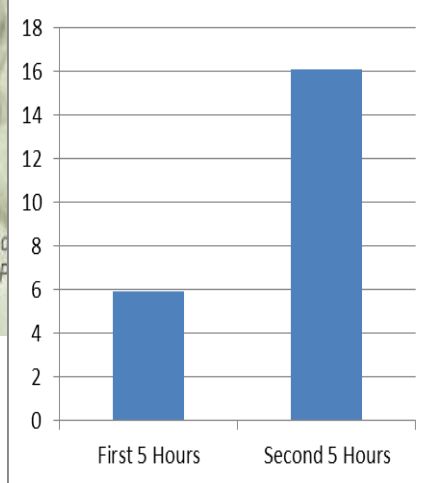
Archery Range MiniVol ug/m3



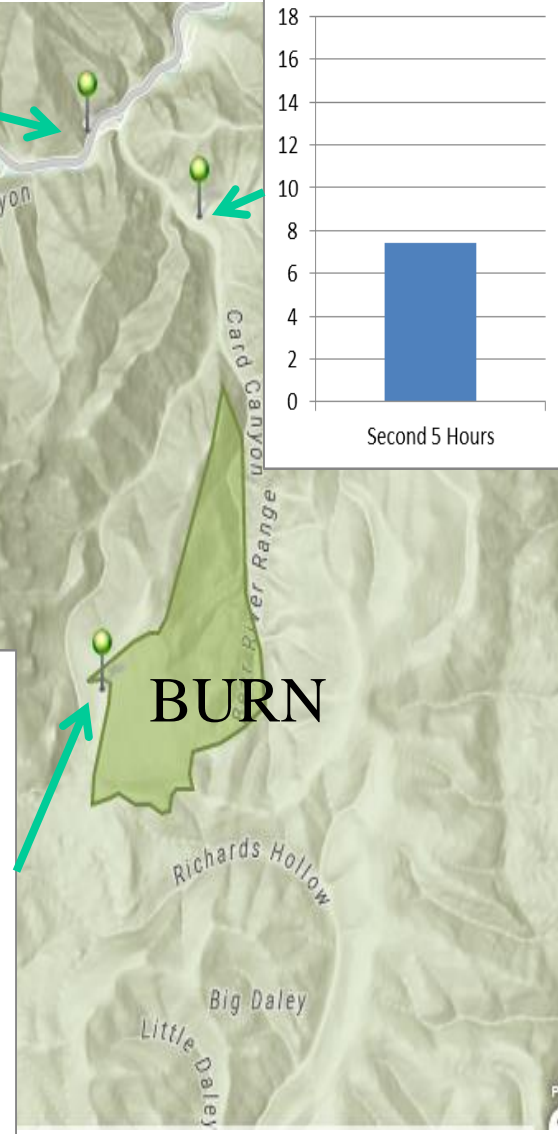
Ranger Station MiniVol ug/m3



Ridgetop MiniVol ug/m3



BURN



Utah Smoke Study Prescribed Fire Locations

Proposed locations for test burning at clearing index values below 500.

All of these sites may not be used, or other sites may be added later

