

# TAX INCIDENCE

Tax Restructuring and Equalization Task Force

December 9, 2019



# TAX INCIDENCE SUMMARY

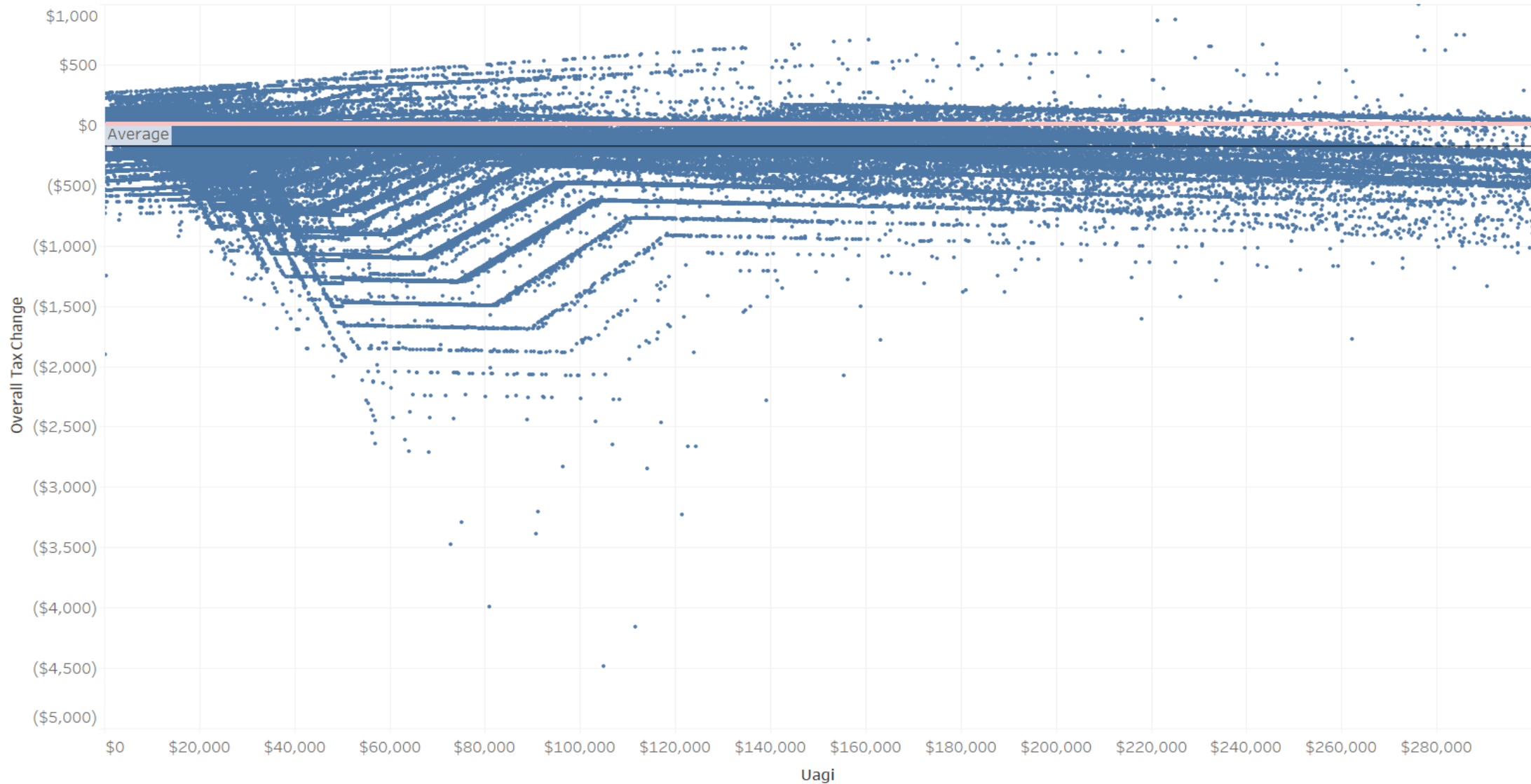
	Previous Bill Draft	Current Bill Draft
% See Tax Decrease	73%	84%
% See Tax Increase	27%	16%
Net Tax Cut	\$80M	\$160M
Dependent/Individual Exemption	<ul style="list-style-type: none"><li>o \$2,500 with no change to phase-out</li></ul>	<ul style="list-style-type: none"><li>o \$2,500 with no change to phase-out</li><li>o Joint filers with no dependents get 1 exemption</li></ul>
Grocery Credit	<ul style="list-style-type: none"><li>o \$125 per exemption</li><li>o .000035 phase-out rate for households above 138% FPL</li></ul>	<ul style="list-style-type: none"><li>o \$125 per exemption up to 4</li><li>o \$50 thereafter</li><li>o .000035 phase-out rate for households above 175% FPL</li></ul>
Income Tax Rate	4.64%	4.66%

# INCIDENCE OF TAX

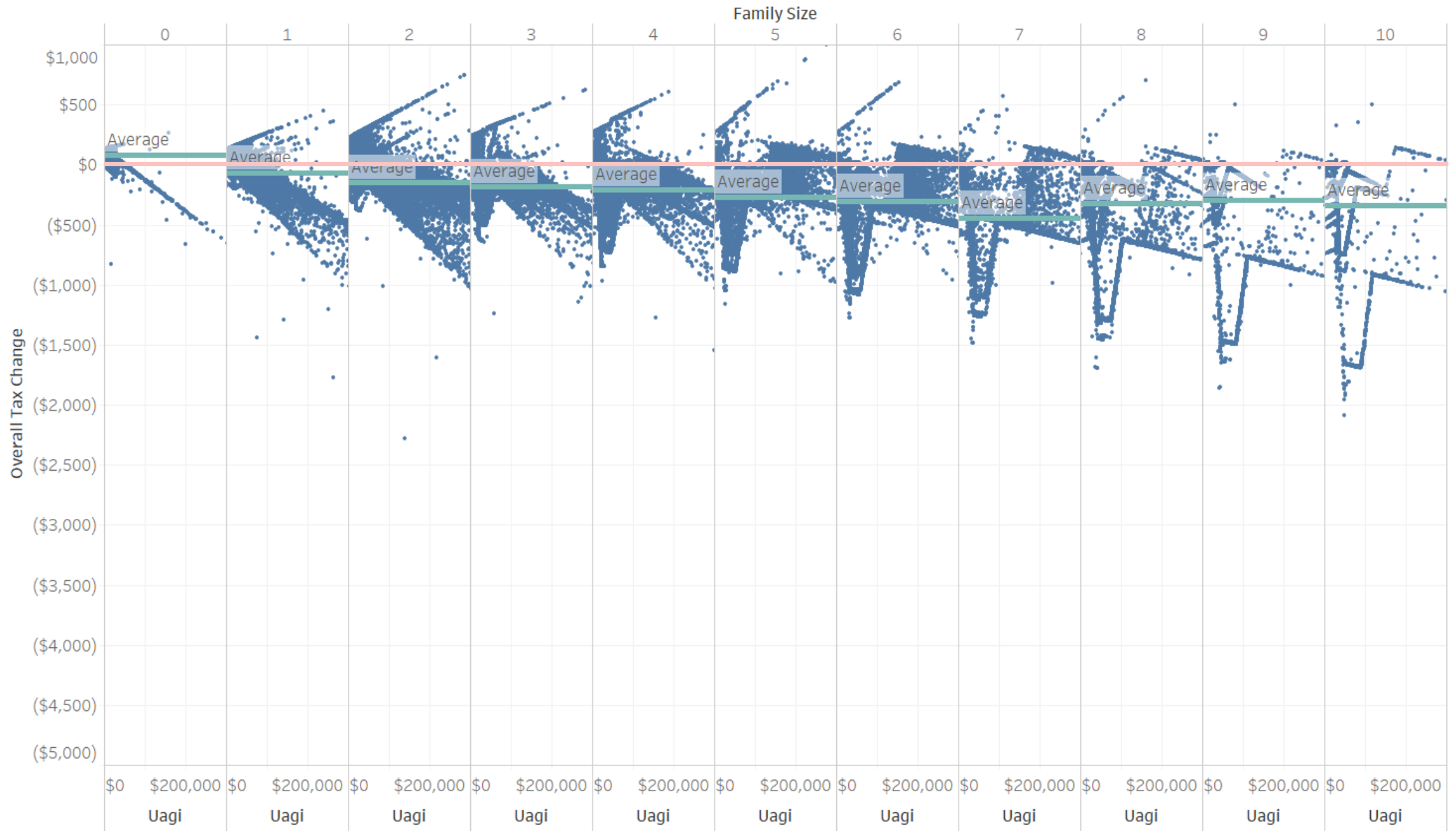
Individuals on Return	Decrease				Increase			
	% See Tax Decrease	# See Tax Decrease	Ave. \$ Decrease per Filer	Total \$ Decrease	% See Tax Increase	# See Tax Increase	Ave. \$ Increase per Filer	Total \$ Increase
0	9%	8,680	(\$68)	(\$590,350)	91%	92,839	\$106	\$9,810,802
1	66%	349,847	(\$50)	(\$17,588,813)	34%	176,332	\$12	\$2,130,594
2	93%	344,779	(\$149)	(\$51,427,827)	7%	26,482	\$25	\$653,867
3	100%	140,275	(\$209)	(\$29,297,203)	0%	284	\$91	\$25,757
4	99%	127,500	(\$290)	(\$36,990,835)	1%	1,596	\$27	\$43,636
5	93%	75,941	(\$369)	(\$28,040,844)	7%	6,009	\$94	\$563,398
6	94%	43,528	(\$514)	(\$22,386,554)	6%	2,684	\$83	\$222,423
7	96%	15,460	(\$685)	(\$10,584,897)	4%	652	\$90	\$58,376
8	97%	5,180	(\$862)	(\$4,467,282)	3%	135	\$62	\$8,372
9	98%	1,513	(\$1,034)	(\$1,564,495)	2%	28	\$52	\$1,464
10	99%	632	(\$1,215)	(\$767,614)	1%	9	\$98	\$882
Total	78%	1,113,335	(\$183)	(\$203,706,713)	22%	307,050	\$44	\$13,519,572
Total Excluding 0 exemption filers	84%	1,104,655	(\$184)	(\$203,116,363)	16%	214,211	\$17	\$3,708,770

# CURRENT BILL DRAFT

Overall Change in Tax Liability, All Filers

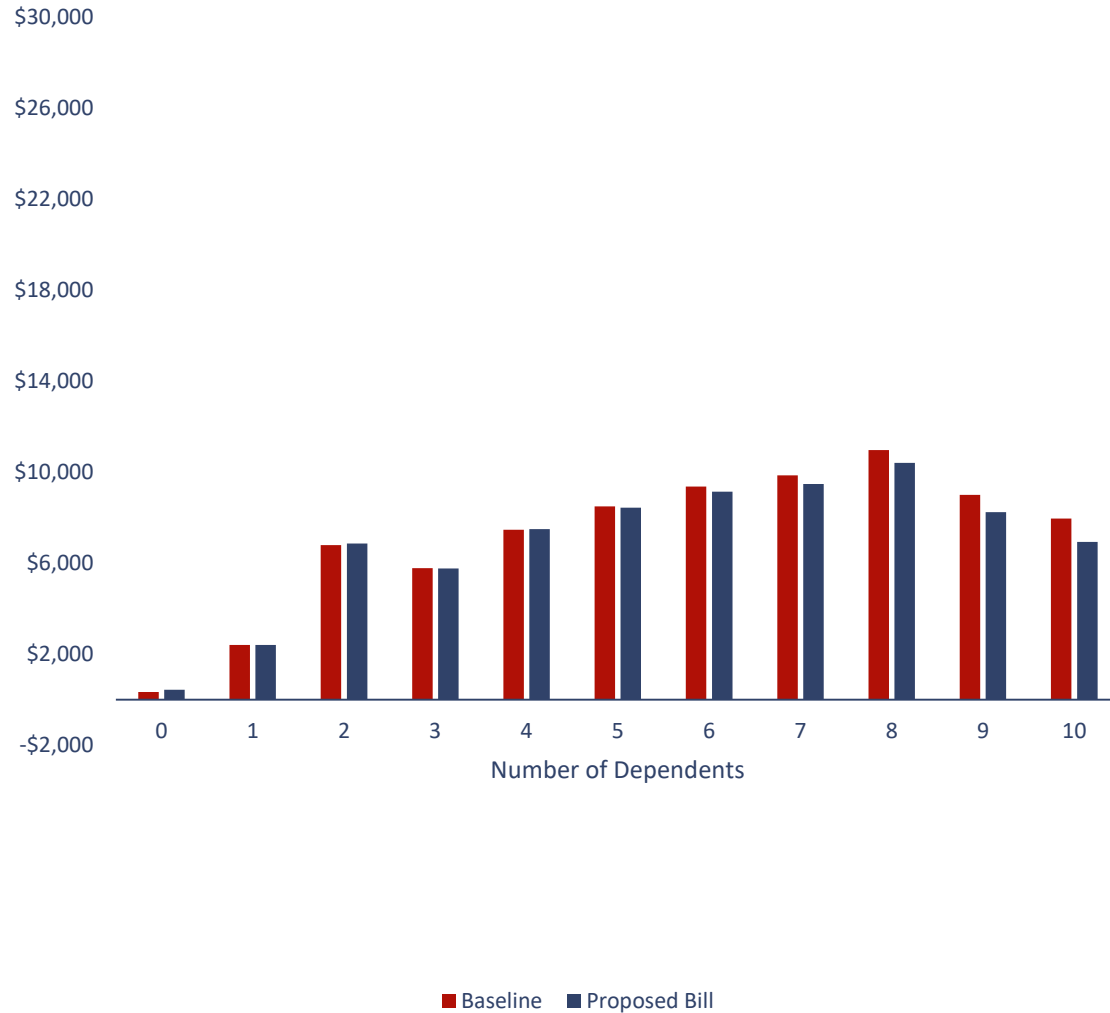


# CURRENT BILL DRAFT

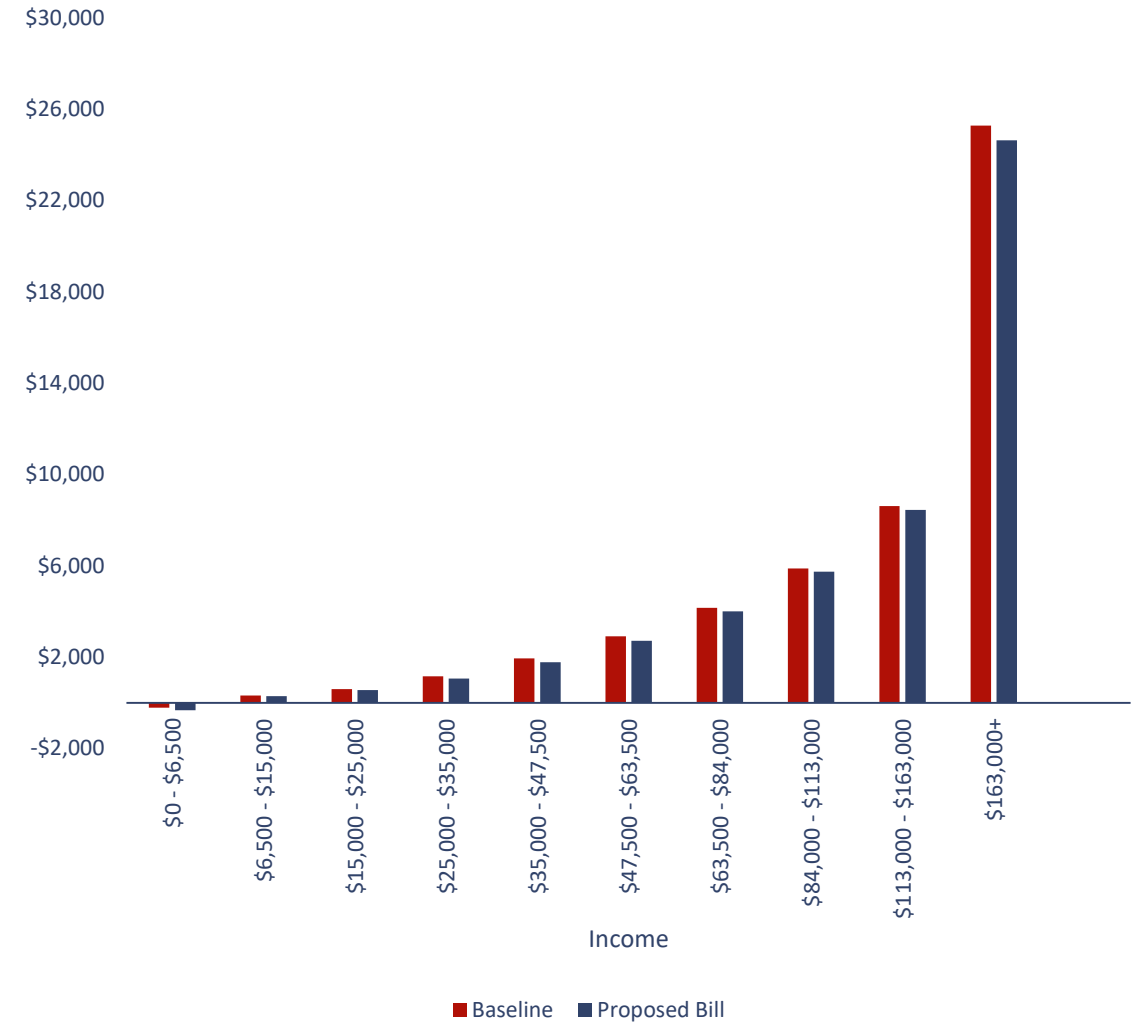


# COMPARISON IN TAX LIABILITY

## Comparison in Mean Tax Liability by Family Size



## Comparison in Mean Tax Liability by Income





UTAH STATE

**LEGISLATURE**