

February 5, 2020

MEHDI HERAVI GLOBAL TEACHING & LEARNING CENTER

FY21 State Funded Capital Development Project Request

Presented by
President Noelle E. Cockett

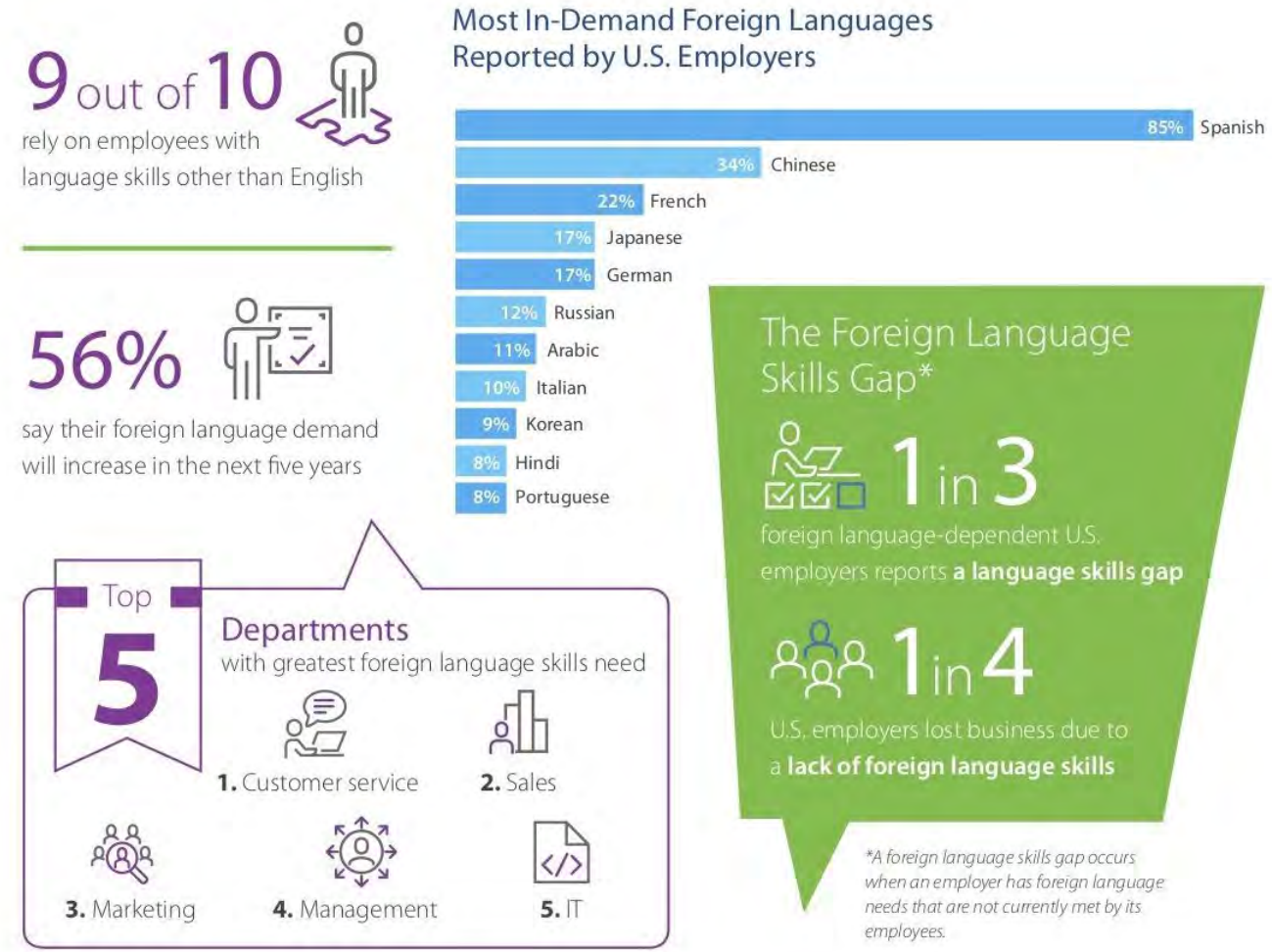
UtahStateUniversity®

WHAT FOREIGN LANGUAGES MEAN FOR U.S. EMPLOYERS

Workforce:

Summary from the 2019 report “Making Languages Our Business: Addressing Foreign Language Demand Among U.S. Employees”

*Commissioned by
The American Council on the Teaching of Foreign Languages*



MEHDI HERAVI GLOBAL TEACHING & LEARNING CENTER

The Project:

- Utah's increasingly global economy needs college graduates with advanced language skills
- Immersive conversational comprehension occurs when languages learning, support and resources are combined into a single facility
- Students will expand language skills from cultural conversation to technical, written and cultural comprehension embedded in their majors
- Upper-level language courses specific to majors (Engineering, Health Services, Business, Agriculture) will be delivered











MEHDI HERAVI GLOBAL TEACHING & LEARNING CENTER

Scope of the Project:

- Foreign Language units in the Department of Languages, Philosophy, and Communications Studies (*currently in 4 buildings*)
- Intensive English Language Institute (*currently housed separately from Foreign Languages*)
- Expanded teaching, conversational, and computer writing labs (*currently 1,331 NSF, proposed 2,320 NSF*)
- Centralized student advising, study, and tutoring rooms (*currently 0 NSF, proposed 2,300 NSF*)



MEHDI HERAVI GLOBAL TEACHING & LEARNING CENTER

Project Budget:




PRELIMINARY COST ESTIMATE	\$17 M
TOTAL PROJECT SPACE (GSF)	38,429
New Space (GSF)	38,429
Remodeled Space (GSF)	0
Space to be Demolished (GSF)	0
Net/Gross Ratio	44%
INCREASE IN-STATE FUNDED O&M	\$332,113
OTHER SOURCES OF FUNDING	\$2.5 M
STATE FUNDED REQUEST	\$14.5 M



MEHDI HERAVI GLOBAL TEACHING & LEARNING CENTER

LEVEL 1




LEGEND

-  ADMINISTRATION
 FACULTY
 LABS / STUDENTS



LEVEL 2

LEGEND

-  ADMINISTRATION
 FACULTY
 LABS / STUDENTS



Courtesy of Method Studios

MEHDI HERAVI GLOBAL TEACHING & LEARNING CENTER

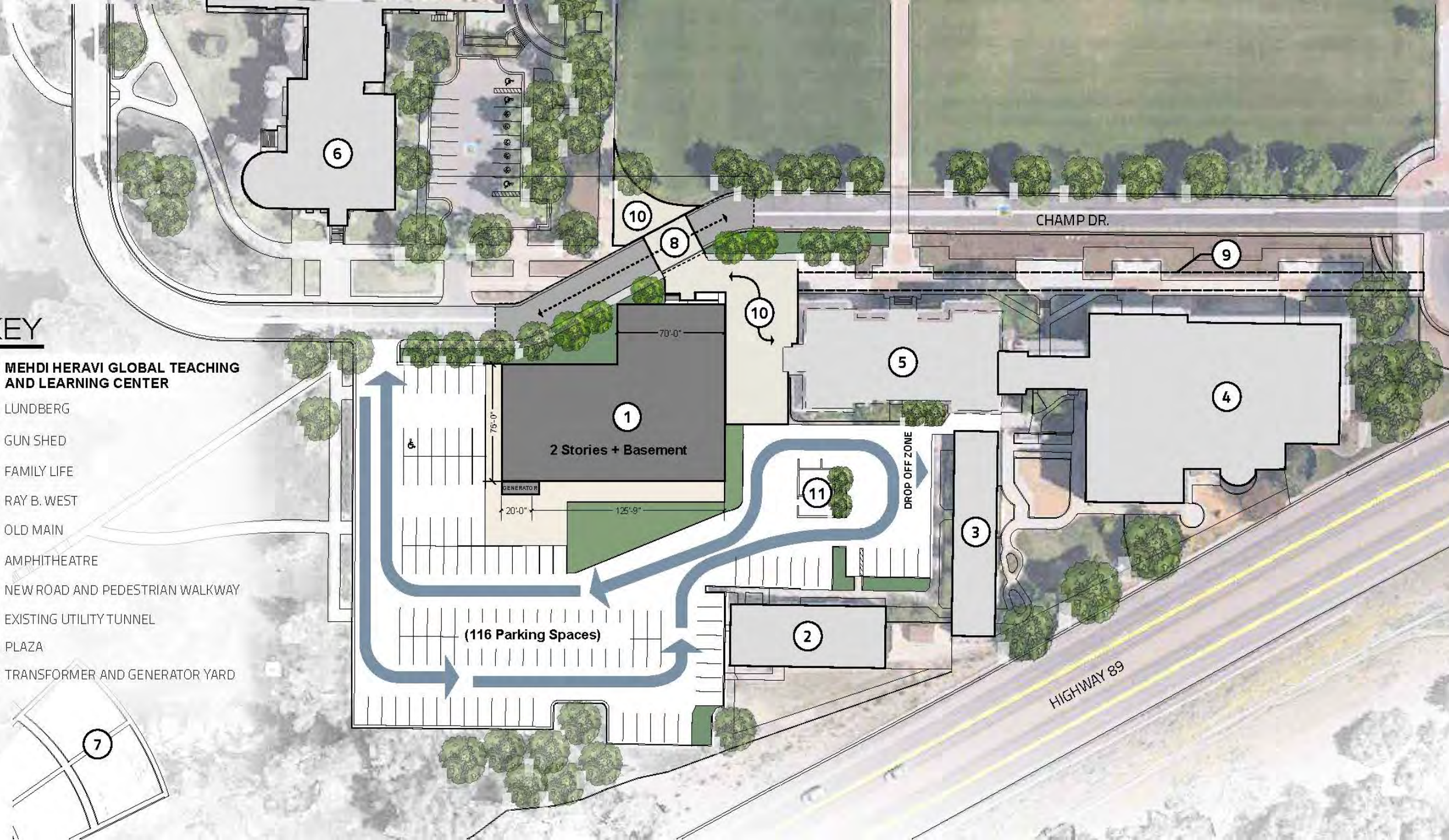


MEHDI HERAVI GLOBAL TEACHING & LEARNING CENTER



KEY

- 1 MEHDI HERAVI GLOBAL TEACHING AND LEARNING CENTER
- 2 LUNDBERG
- 3 GUN SHED
- 4 FAMILY LIFE
- 5 RAY B. WEST
- 6 OLD MAIN
- 7 AMPHITHEATRE
- 8 NEW ROAD AND PEDESTRIAN WALKWAY
- 9 EXISTING UTILITY TUNNEL
- 10 PLAZA
- 11 TRANSFORMER AND GENERATOR YARD



MEHDI HERAVI GLOBAL TEACHING & LEARNING CENTER

Affordability of the Project:

- Project scope is dramatically scaled back from FY20 request and now focuses only on essential space for language programs (38,500 GSF)
- Project budget is modest (\$17M) but still meets critical needs
- State support is reduced (\$14.5M) because of external financial support, including a commitment from the leadership of The Church of Jesus Christ of Latter-day Saints



MEHDI HERAVI GLOBAL TEACHING & LEARNING CENTER

Capacity of the Project:

- The new facility will house language majors (~300 students) and minors (~900 students) in Spanish, Chinese, Portuguese, Arabic, German, French, Russian and Japanese
- Language needs of students in programs outside the department (~1,000) will be served
- International students will be connected with other USU students learning their language
- Consolidation of language faculty will allow temporary space to revert to previous uses (7,900 NSF)



MEHDI HERAVI GLOBAL TEACHING & LEARNING CENTER

Timely Completion for Students:

- Over 2,200 students enroll in 1000- and 2000-level languages classes each year
- Nearly 2/3 of students in lower-division language classes are non-language majors
- 3000- and 4000-level language classes with major-specific content will be added
- Language learning will be enhanced in purpose-designed space



MEHDI HERAVI GLOBAL TEACHING & LEARNING CENTER

Summary of the Project:

- Businesses across Utah, especially on the Wasatch Front, are increasingly global in scope
- This project will help prepare USU students to gain the communication expertise and cultural confidence to be leaders in their professions and communities
- Students, including returning missionaries from The Church of Jesus Christ of Latter-day Saints, will have advanced language skills as well as cultural competencies embedded in their majors
- Request of \$14.5M state support for the \$17M project



February 5, 2020

BLANDING PROFESSIONAL CAREER AND TECHNICAL EDUCATION

FY21 Non-State Funded Capital Development Project Request

Presented by
Vice President David T. Cowley

UtahStateUniversity®

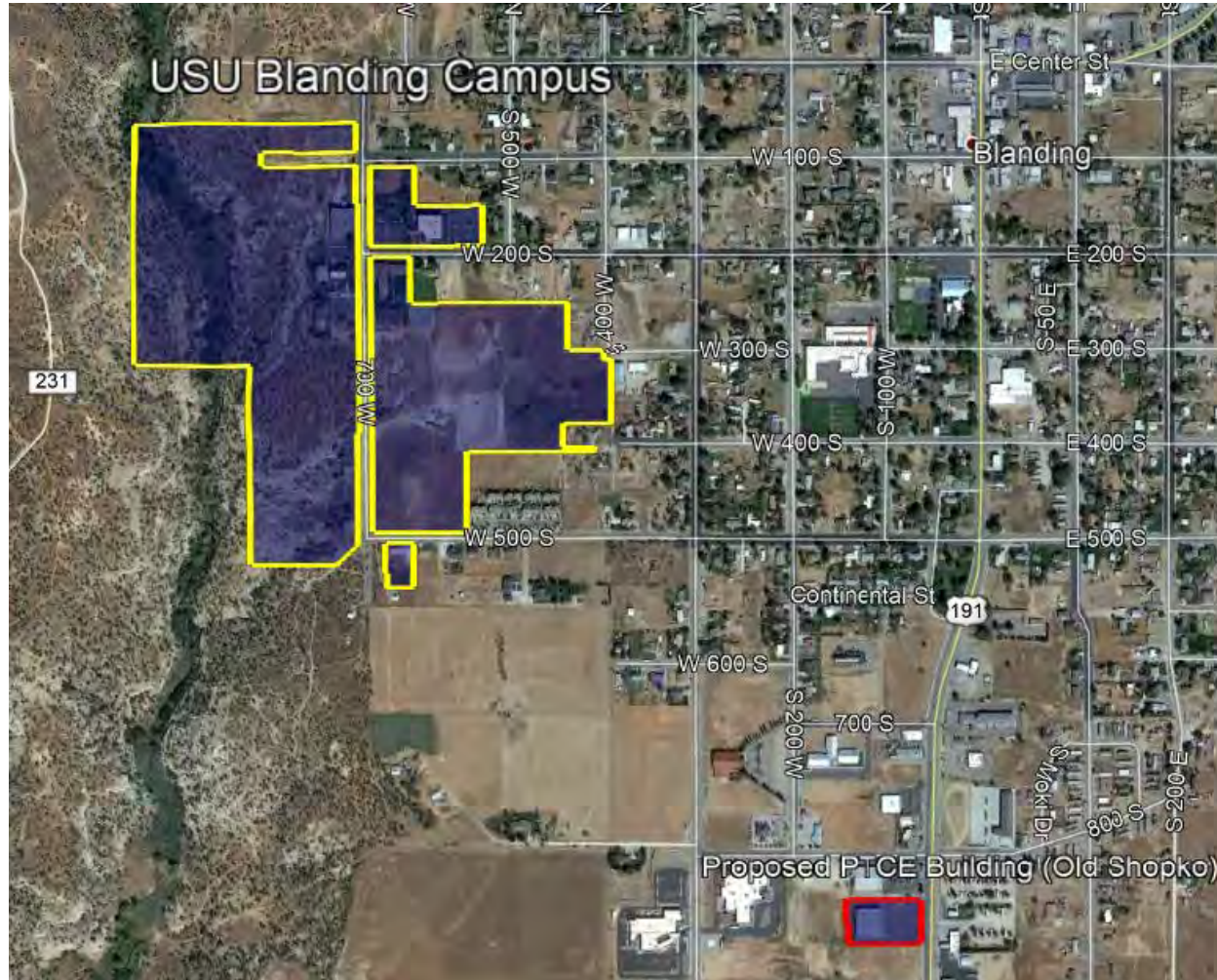
BLANDING PROFESSIONAL CAREER AND TECHNICAL EDUCATION LAB

ORIGINAL PROJECT BUDGET:

PRELIMINARY COST ESTIMATE	\$1.6M
TOTAL PROJECT SPACE (GSF)	4,035
New space (GSF)	4,035
Remodeled space (GSF)	0
Leased space to be vacated (GSF)	4,085
INCREASE IN STATE FUNDED O&M	\$37,162
NON-STATE FUNDED REQUEST	\$1.6M



BLANDING PROFESSIONAL CAREER AND TECHNICAL EDUCATION LAB



BLANDING PROFESSIONAL CAREER AND TECHNICAL EDUCATION LAB

CURRENT PROJECT BUDGET:

BUILDING PURCHASE	\$500,000
RENOVATIONS	\$500,000 - \$1M
TOTAL BUILDING SPACE (GSF)	22,367
OPERATIONS & MAINTENANCE	\$194,602

FY2021 STATE AND NON-STATE FUNDED CAPITAL DEVELOPMENT PROJECT REQUESTS

UtahStateUniversity®

