



USU Research

February 8, 2021

UtahStateUniversity

Economic Impact of USU Research:

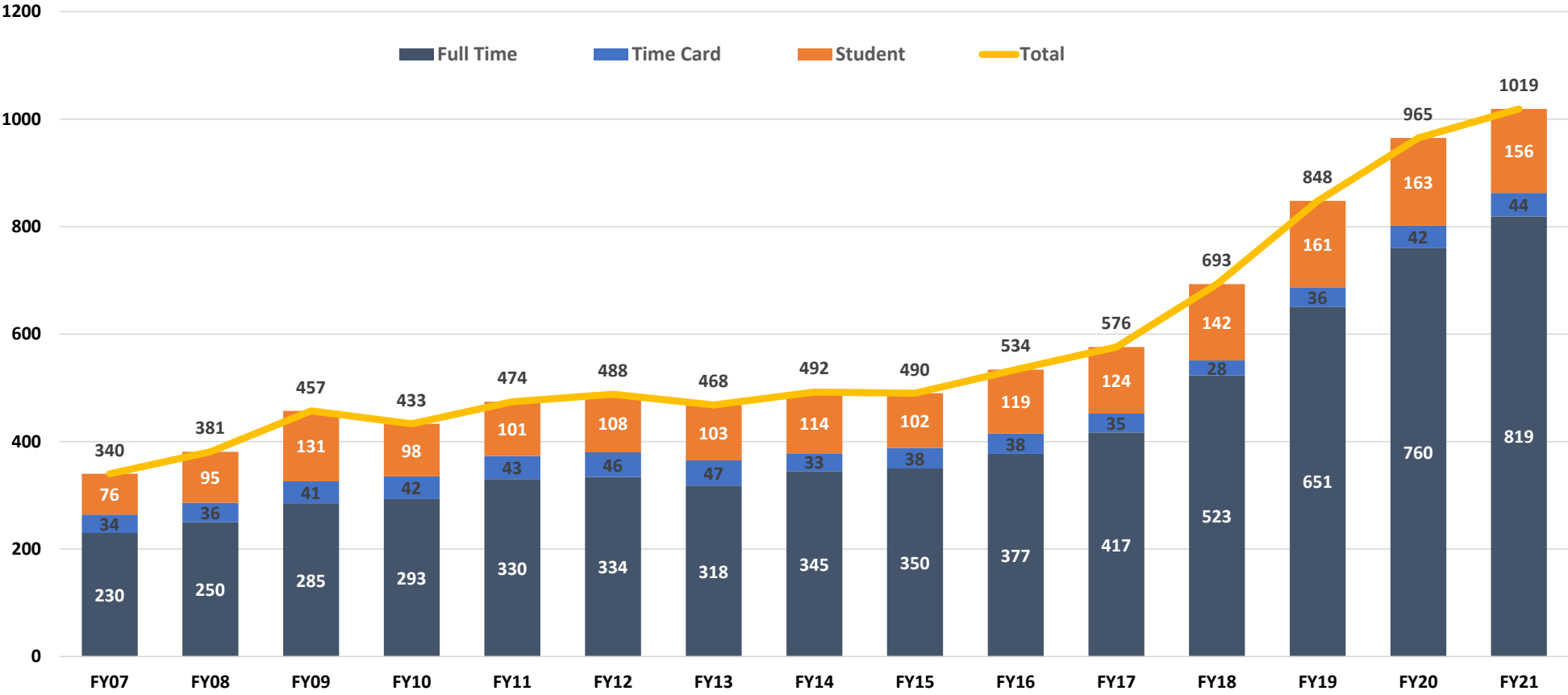


- Expertise in satellite technologies and software systems, radar and cybersecurity solutions
- Emphasis on electro-optical sensing
- 430+ spaceflight missions
- Contracts with DOD, all branches of the military, NASA
- \$202M in FY20

- Created in 1959 as a non-profit 501(c)(3) owned by USU
- Headquarters in Logan, UT



SDL - Headcount



Companies Founded or Relocated Because of USU Research:

EP Systems: battery storage

- Relocated from CA to Cache Valley
- 75 employees

Inovar: circuit boards

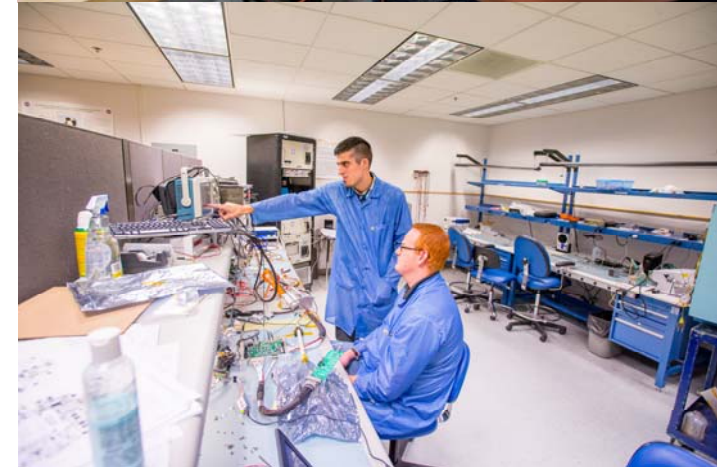
- \$188M in annual sales
- 390 employees in Logan

Campbell Scientific: data loggers, measurement instruments

- Founded in 1974
- Manufactured over 300,000 instruments

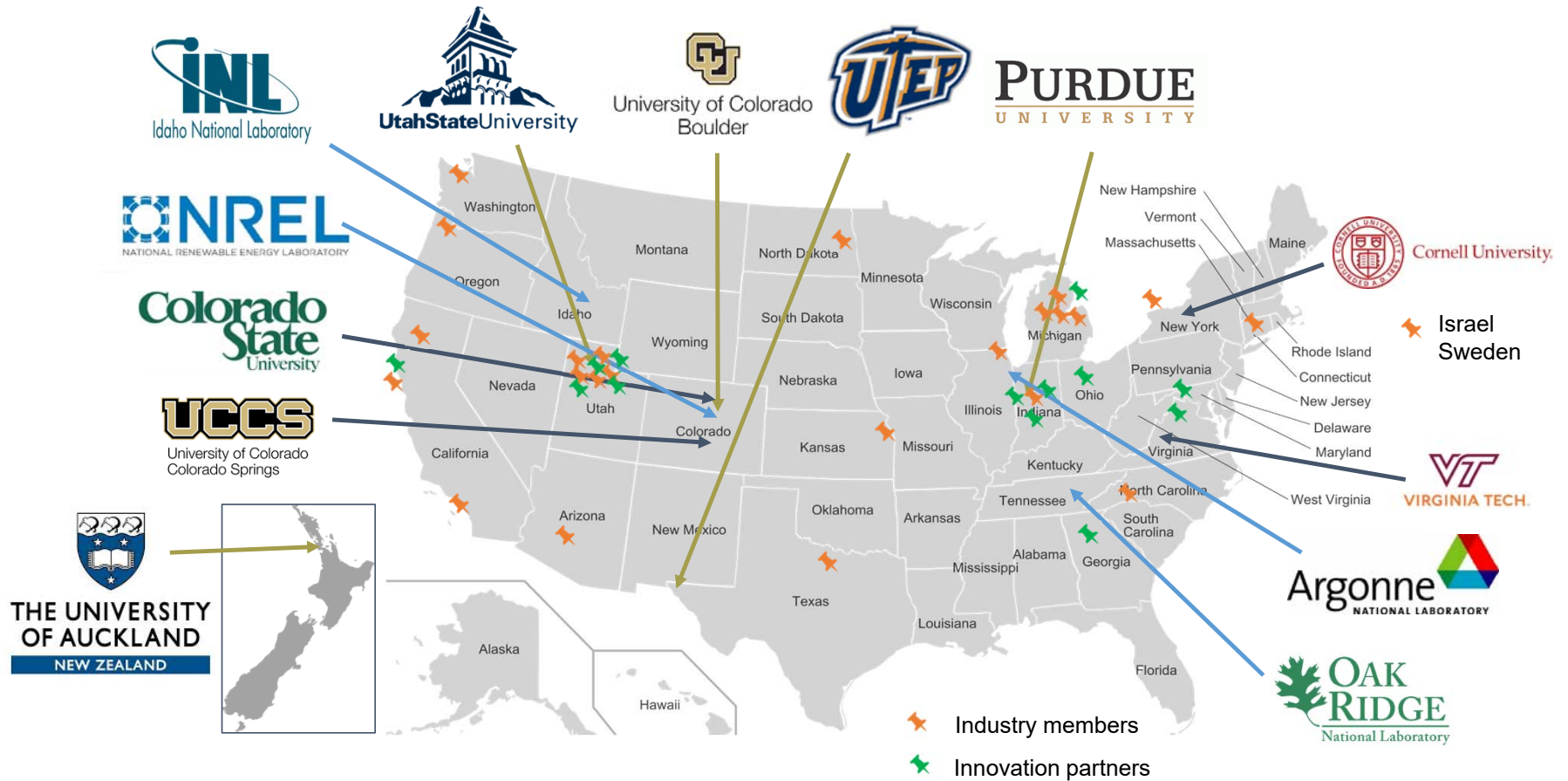
Juniper Systems: ultra-rugged data collectors, GPS receivers

- Founded as a subsidiary of Campbell Scientific in 1993
- Equipment sold in over 50 countries world-wide



USU Research Leads to Strategic Partnerships

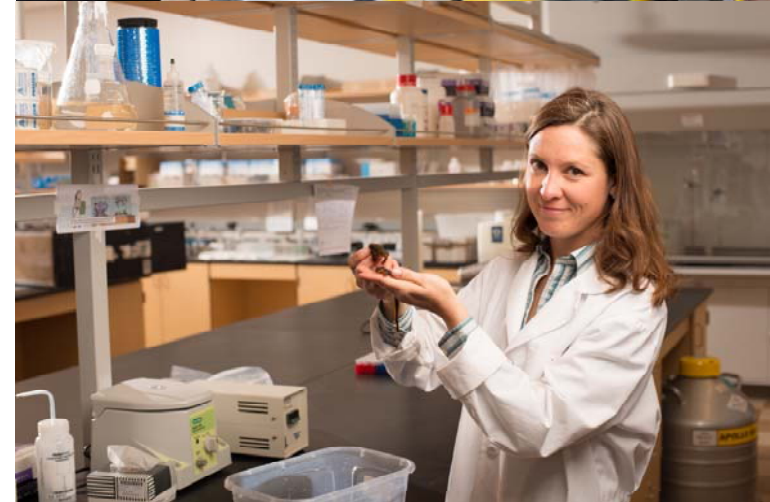
ASPIRE – Program to electrify transportation



USU Research Addresses State Issues:

USU Institute of Land, Water, Air:

- **143 USU faculty researchers in the areas of land, water, and air**
- **82% of the land/water/air professors have Utah research partnerships:**
 - **USU Engineering laboratories with DEQ on air quality**
 - **USU IORT with state agencies to manage demands and trends for recreation**
 - **USU Berryman Institute with DNR to manage wildlife populations and human/wildlife conflicts**
 - **UDVL at USU with UDAF to keep wildlife and farm animal populations healthy**



USU Research Addresses State Issues:

USU Public Land Initiative:

Legislative funding to support projects that address wildlife, forestry and outdoor recreation issues

\$900K awarded in the last three years across 21 projects, matched by an additional \$900K

Project examples:

- **Native plant seeding in the Great Salt Lake wetland restoration**
- **Economic impact Utah's night skies**
- **Sage-grouse responses to livestock grazing**
- **Pollinator bee management through acoustics and genetic detection**
- **Post-wildfire sedimentation in Wasatch Front reservoirs**



USU Research Helps Utahns:

USU Emma Eccles Jones College of Education and Human Services

- Ranks 12th in the nation in total research dollars with \$41.8M in 2019-20

USU Center for People with Disabilities

- Utah's federally designated University Center for Excellence in Developmental Disabilities
- Over 14,000 Utahns received services from CPD this past year

Sorenson Legacy Foundation Center for Clinical Services

- Includes 19 service areas addressing issues that span the human life cycle such as autism and developmental disabilities, behavioral health, speech-language-hearing, and health education



Student Education Supported by USU Research:

- **Undergraduate research helps solidify career choices, provides experiences that enhance a resume and contributes to the discovery of new knowledge**
- **USU has the second oldest undergraduate research program in the U.S.**
- **USU was 1 of 3 institutions to receive 2020 Council on Undergraduate Research Award**
- **USU participates in the annual Posters on the Hill and hosts an annual Undergraduate Research Symposium**
- **Over 35% of USU undergraduates and over 65% USU faculty participate in undergraduate research**

