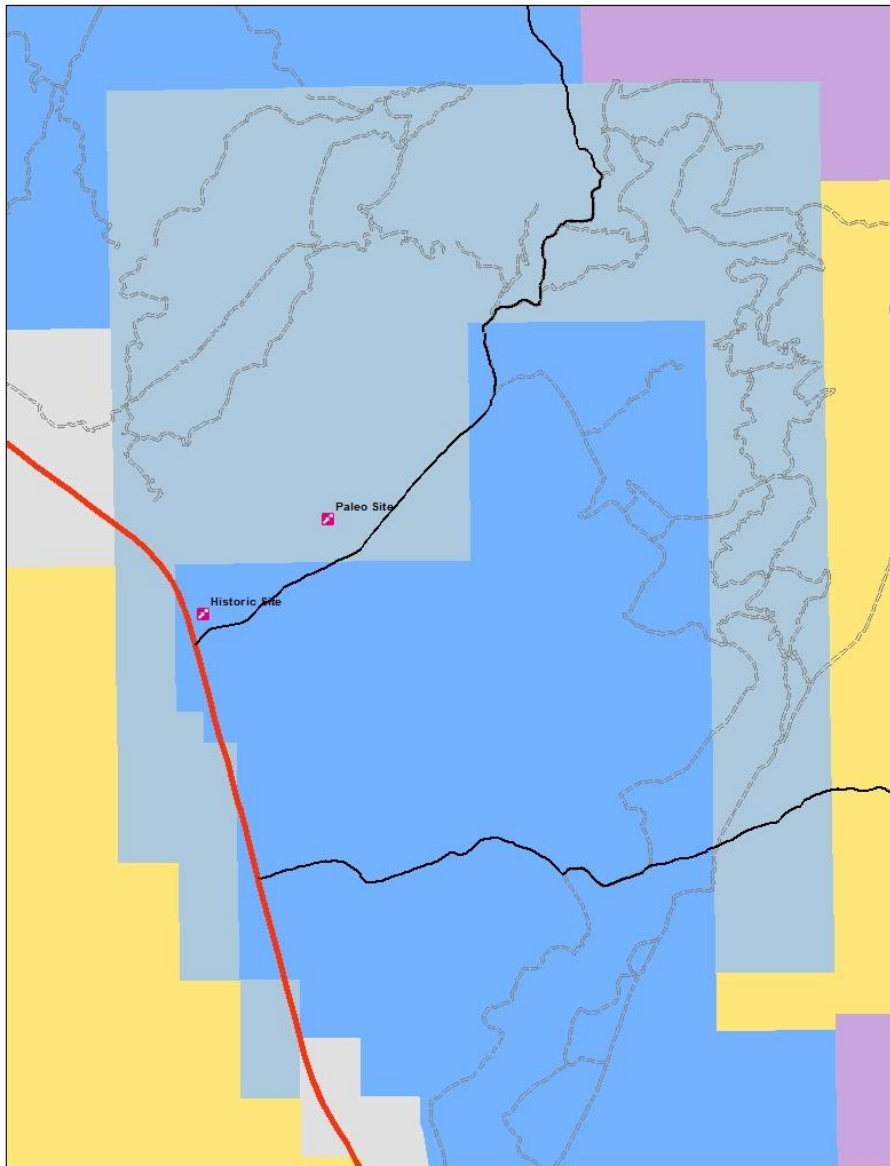




# **Dalton Wells Management Unit**

**Recreation Resource Opportunity Overview**

# Management Unit Overview



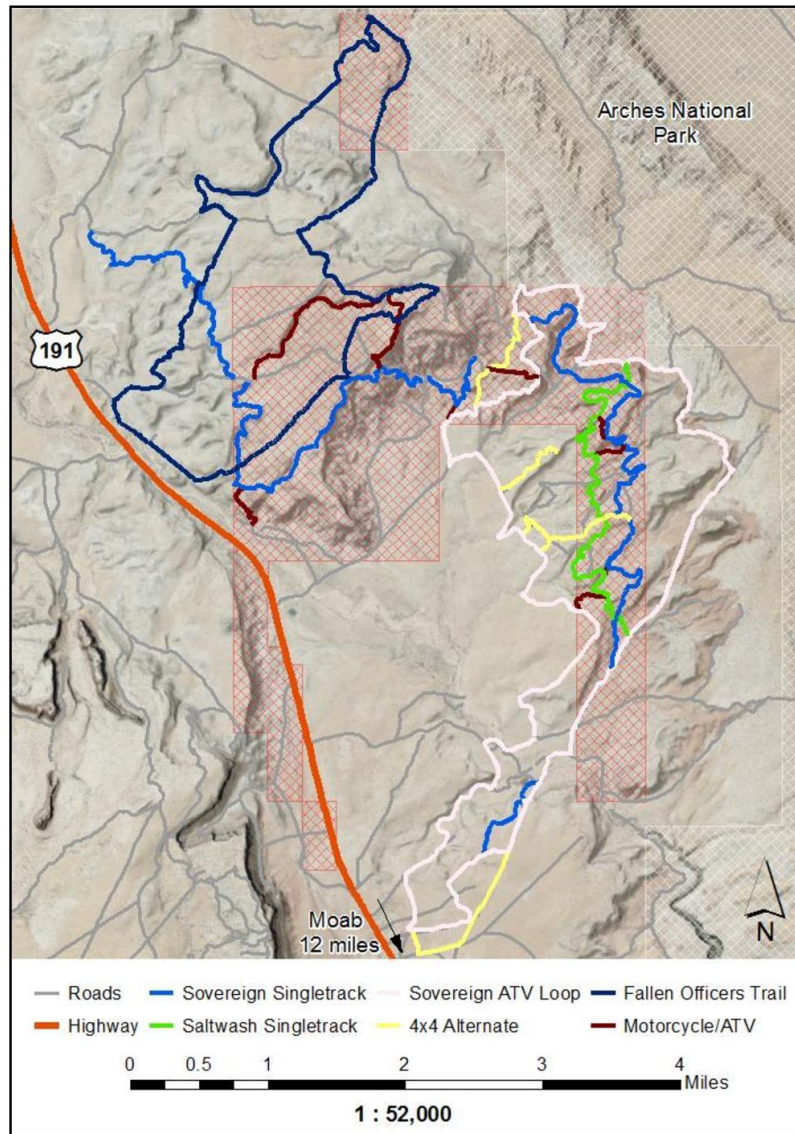
- 4050 total acres of Sovereign Land
- Camping, Trails, Archeology, Cultural Resources
- Current Conditions:
  - Disorganized camping traffic
  - Litter and Sanitation issues
  - Trails need maintenance



Left: Surface Land Ownership (FFSL Lands are Lighter Blue)  
Middle: Off-Trail Riding, a typical Moab resource concern  
Right: Disorganized and semi-permanent camping in the DWMU

# Multi-Use Trails

FIGURE 6: SOVEREIGN TRAIL SYSTEM



## The Sovereign Trail System

- Built in 2001
- Over 50 miles of multi-use trails
- Maintained by 501(c)3 "Ride with Respect"
- Portions are considered Expert Motorized Single Track, an uncommon trait.

## The Fallen Peace Officer Trail

- Commemorates the sacrifices of Utah Peace Officers and Rangers on public lands
- Built after the shooting of Ranger Brody Young in 2010
- Continues to be used annually by the Utah Peace Officers Association for their commemorative Ride.



# Significant Cultural Resources

The Moab Isolation Center lies partly on Sovereign Lands

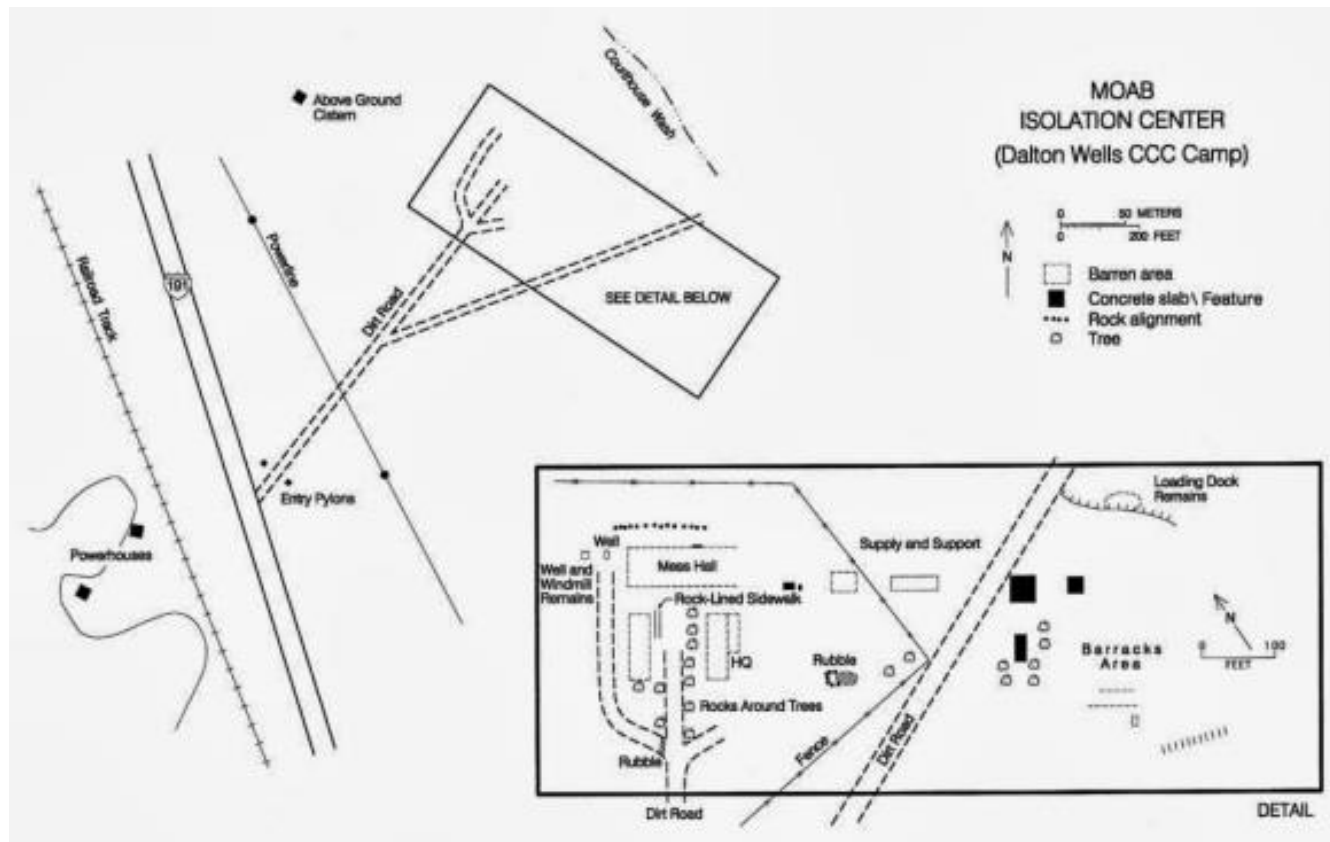
- The site was originally developed as a camp for new-deal era CCC workers, who constructed many of the original roads and trails in the area.



# Significant Cultural Resources

The Moab Isolation Center lies partly on Sovereign Lands

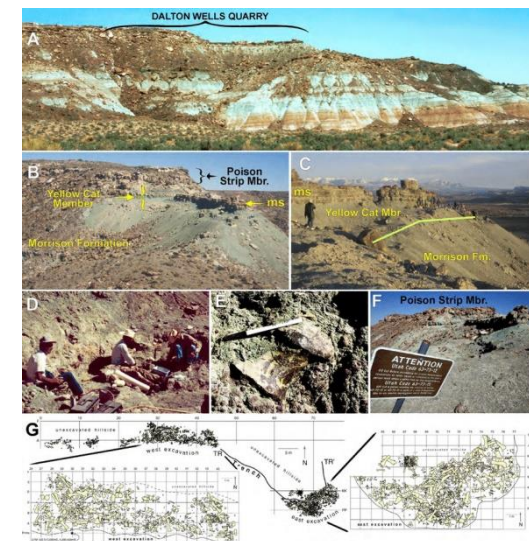
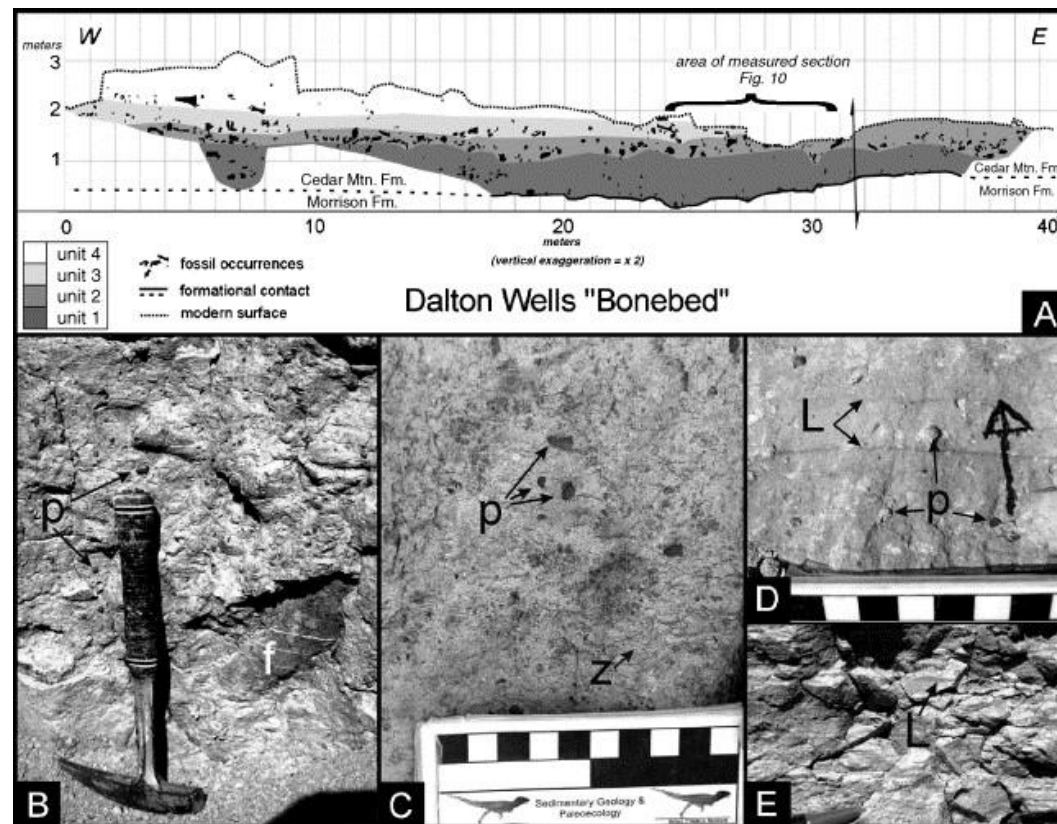
- It was repurposed by the War Relocation Authority during World War II and used as a detention facility for American citizens moved from the Manzanar Internment Camp near Death Valley, who were deemed “troublemakers”.



# Significant Paleontological Resources

The Dalton Wells Dinosaur Quarry has one of the most significant fossil beds on the continent.

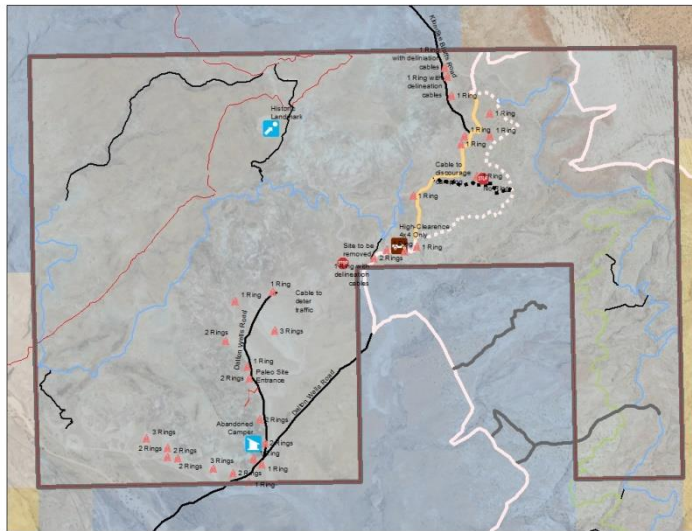
- The Utah State Dinosaur was discovered here
- Nine dinosaur taxa are recognized at Dalton Wells as of 2014
- 4,200 individual bones have been recovered
- Only 215 m/sq of an estimated 4,000m/sq have been excavated





## Current FFSL Goals & Objectives

- Organize recreation traffic
- Provide quality visitor experience
- Protect sensitive resources
- Optimize public trust management

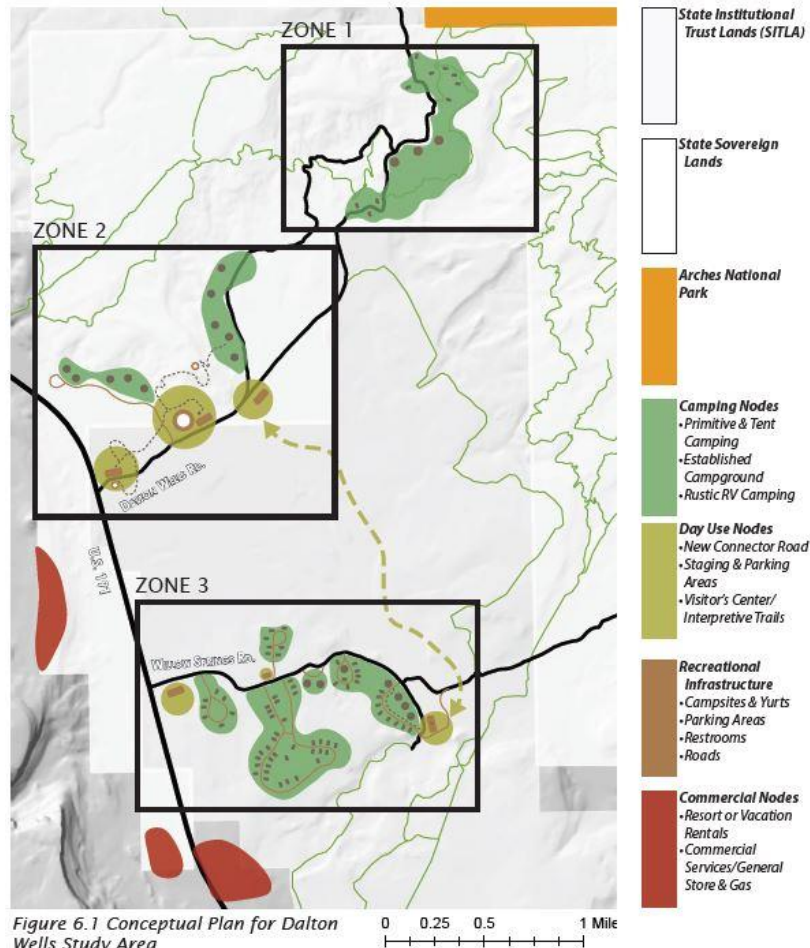


Above: Ledge A Campsite and Vault Toilet, courtesy BLM Moab Field Office  
Left: Moabosaurus skeleton, found in the Dalton Wells Management Area  
Above & Left: proof-of-concept mockup of possible campground layout

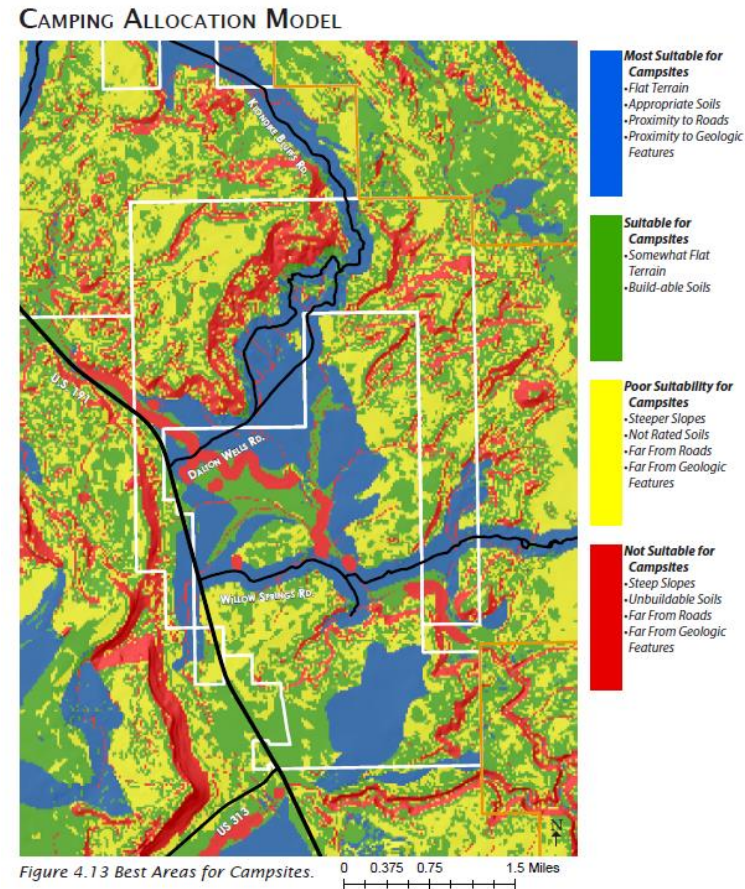


# Site Analysis & Planning

- Began with vehicle counts in 2016
- USU - Moab Rec Department Survey in 2017
- USU Landscape Architecture Graduate Thesis - 2018



Left: A Multi-zone landscape design featuring overnight, day-use, and commercial nodes



Right: Analysis of landscape features to identify best development sites.



# FFSL/County Cooperation

FFSL first approached Grand County in 2017

- Inspired by the BLM/County Sand Flats Cooperative Agreement
- FFSL invests in the capital improvements, subsidizes operation for three years
- Grand County given authority to administer recreation in the area



Above: An example of an "Iron Ranger" and info kiosk for self-serve campsite reservation and fee collection

- Self-serve site reservation
- First-come, first-served basis
- Dispersed overflow area
- FFSL subsidizes operational costs up to \$33,333.00/yr for three years.
- County sets their own fee-schedule and can leverage revenue retained against possible future grant funding
- County has authority to enforce rules