

Point of the Mountain Commission

May 27, 2021

Recent Point of the Mountain Area Projects

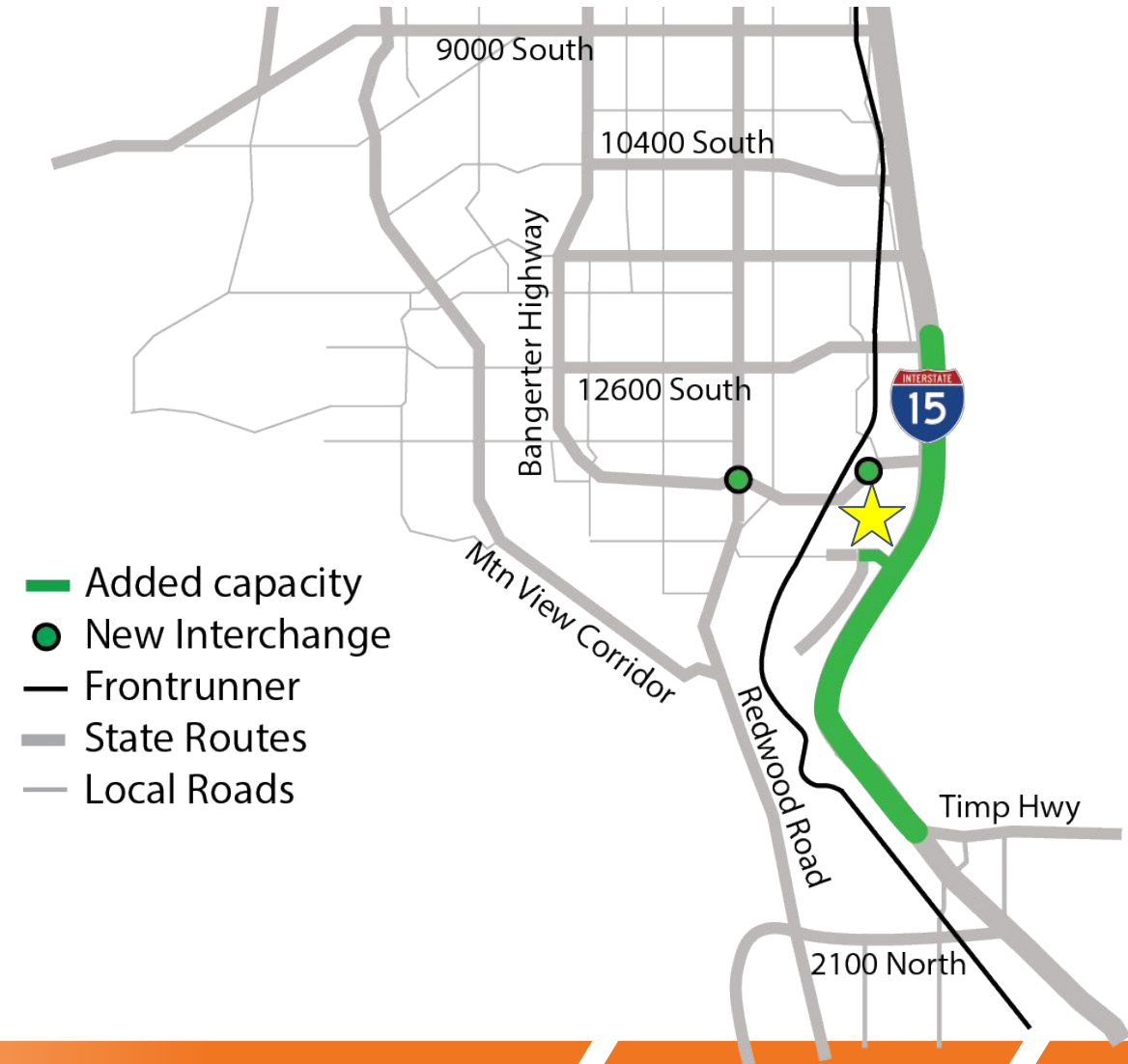
PROJECTS

I-15 Point: 12300 South to Timpanogos Highway & 14600 South SPUI

Bangerter Highway & 600 W Interchange

Bangerter Highway & Redwood Rd Interchange

Total Projects = \$282 M



I-15 Point: 14600 South Improvements

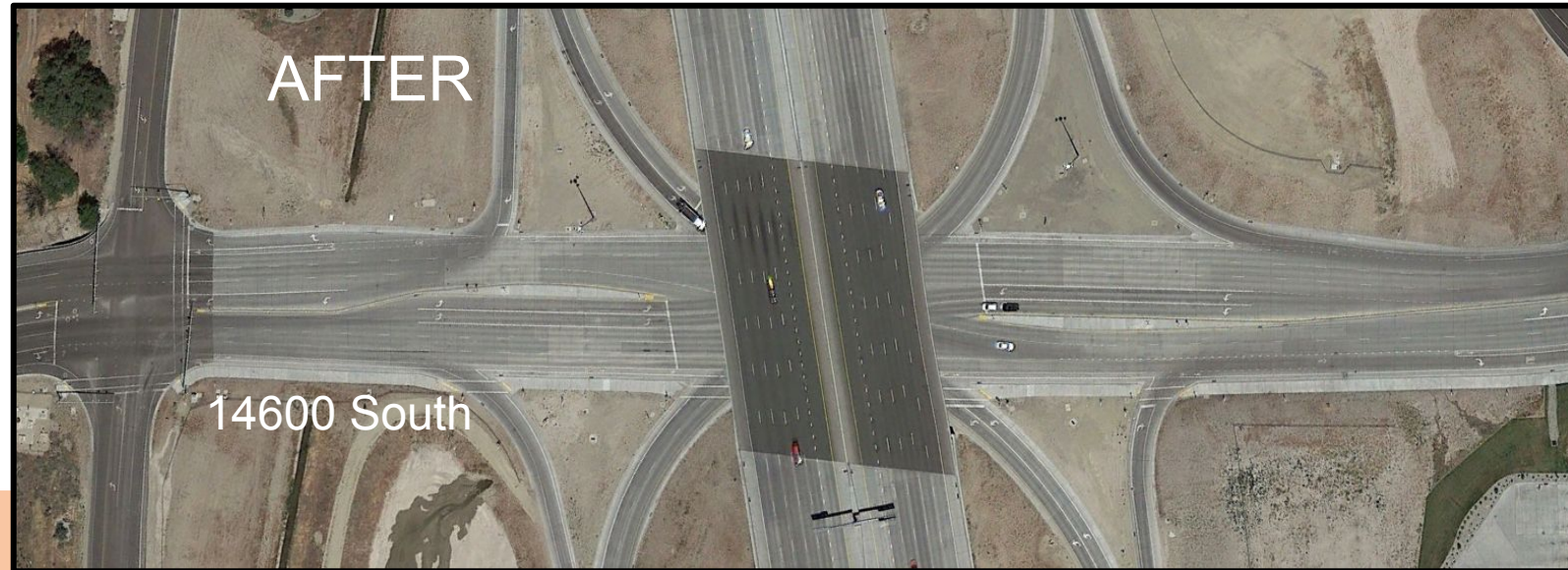
PROJECT OVERVIEW

The project converted 14600 South from a one lane & one diamond interchange to a Single Point Urban Interchange (SPUI) with 3 lanes in each direction. The eastern frontage road was relocated further east and the western frontage road temporarily signalized.

Additional lanes on I-15 were added from 12300 South to Timpanogos Hwy to improve regional mobility.

Project Value
\$197 M

Schedule
Completed in 2016



Bangerter Highway & 600 West Interchange

PROJECT OVERVIEW

The project constructed an interchange at 600 West to access the surrounding land uses. This provided a critical access point to the Point development.

Project Value

\$43 M

Schedule

Completed in 2017



Bangerter Highway & Redwood Road Interchange

PROJECT OVERVIEW

The project converted the Redwood Road & Bangerter Highway intersection to become a grade separated interchange. This interchange provides regional connection to Redwood Road as a high capacity facility parallel to I-15.

It reduced delay for the regional connections and increased safety.

Project Value

\$42 M

Schedule

Completed in 2015



Point of the Mountain Area Funded Projects

PROJECTS

Porter Rockwell Bridge

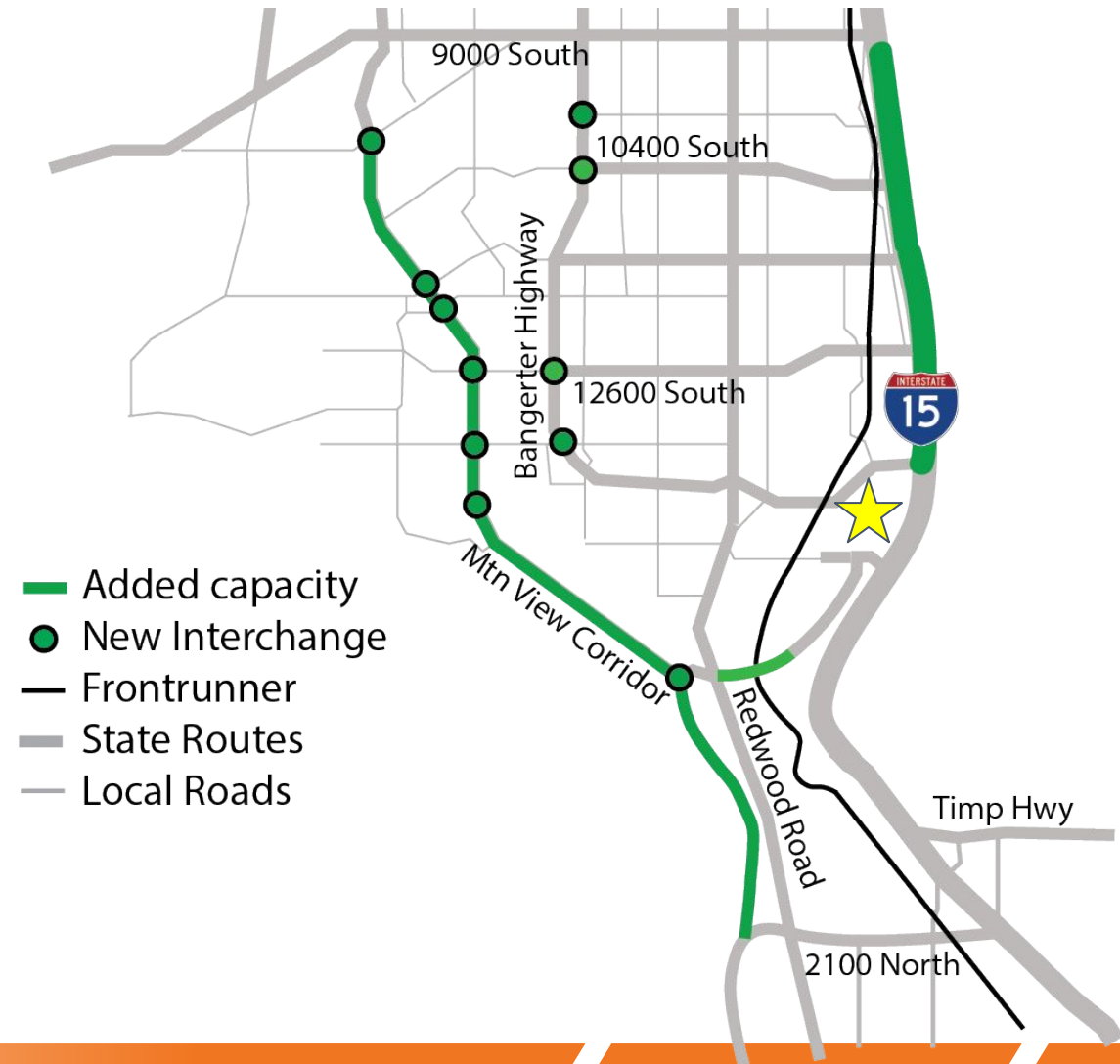
Mountain View Corridor: Porter Rockwell Blvd to 2100 North

I-15 NB Collector-Distributor Extension: Bangerter Hwy to 9000 South

Mountain View Corridor: Porter Rockwell Blvd to Old Bingham Hwy

Bangerter Highway Interchanges: 9800 South, 10400 South, 12600 South, 13400 South

Total Projects = \$1,574 M



Porter Rockwell Bridge

PROJECT OVERVIEW

The Porter Rockwell Bridge will connect two roadway segments previously funded by the City of Bluffdale, WFRC and UDOT. The Bridge will span the Jordan River, UTA, UPRR, and 4 canals.

- High capacity east-west connection between I-15, The Point Development, and Mountain View Corridor.
- Active transportation connection to Jordan River Parkway Trail.

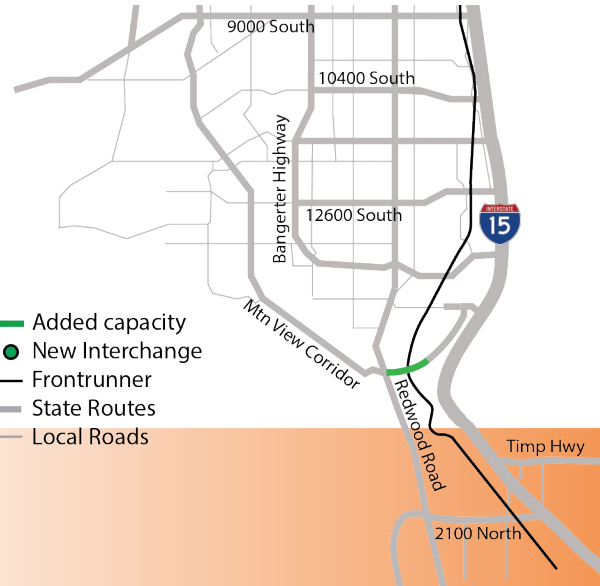
Over 30,000 vehicles per day forecasted by 2030.

Project Value

\$44 M

Schedule

Estimated Completion in May 2022



Mountain View Corridor - 2100 N to Porter Rockwell

PROJECT OVERVIEW

This project will connect the Salt Lake and Utah County segments of Mountain View Corridor from 2100 North Lehi to Porter Rockwell Blvd in Bluffdale.

- High capacity north-south alternative parallel to I-15.
- Reduce delay on Redwood Road.
- Construct and create network of high comfort active transportation facilities.

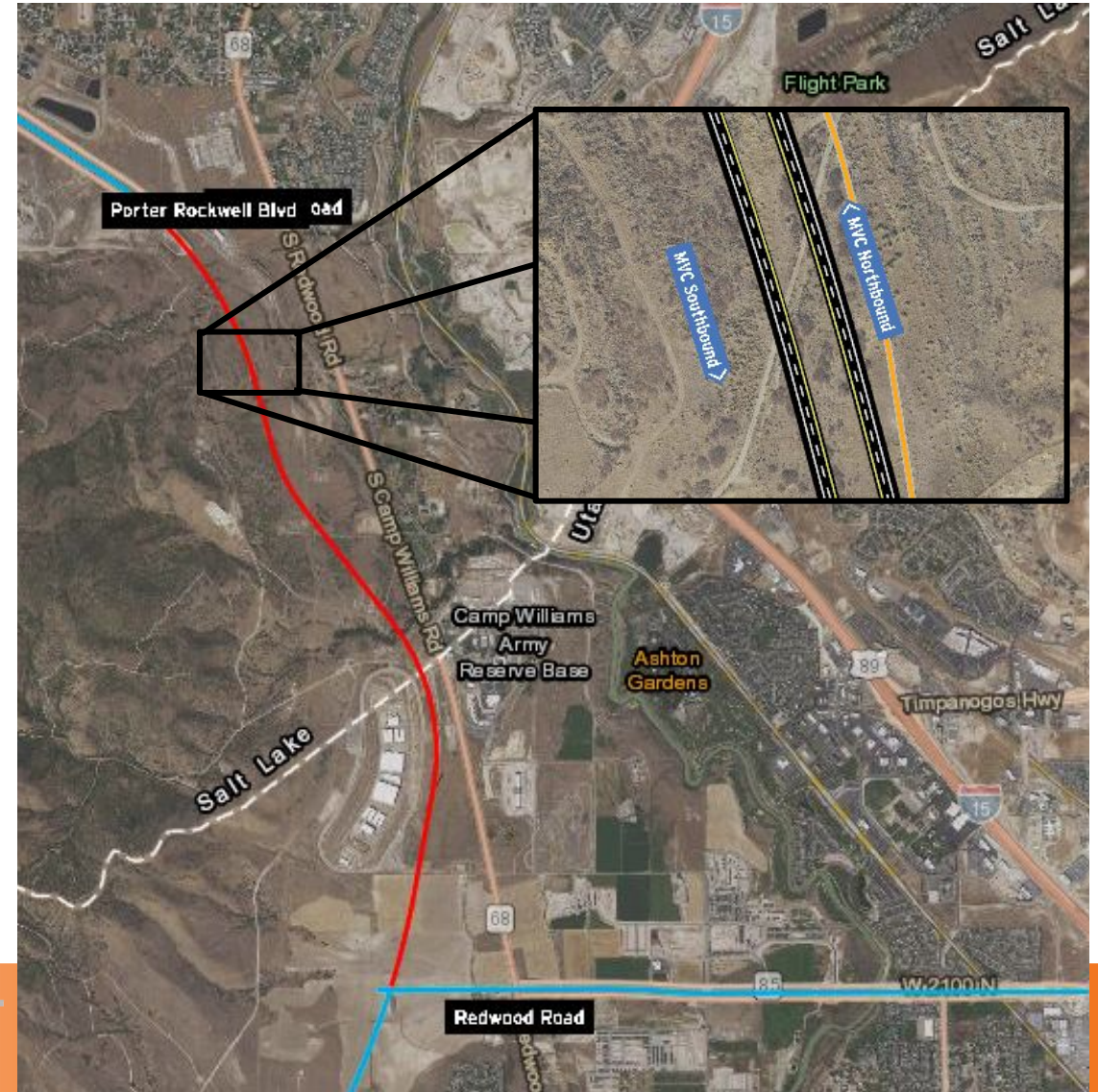
Over 90,000 vehicles per day forecasted by 2030.

Project Value

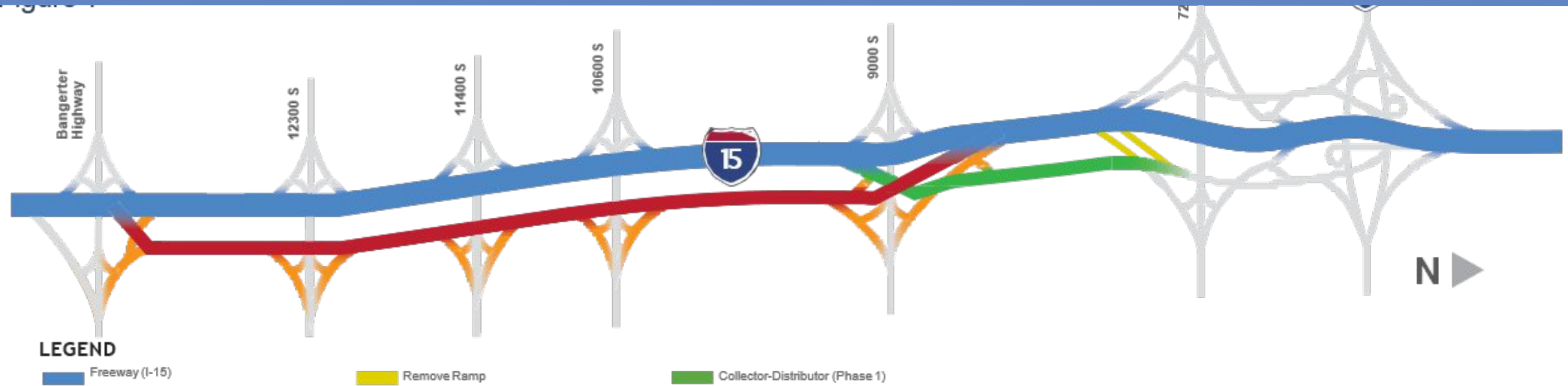
\$350 M

Schedule

Estimated Start in Fall 2023



I-15 NB Collector-Distributor: Bangerter to 9000 S



PROJECT OVERVIEW

This project will complete a collector-distributor from Bangerter Highway to 9400 South.

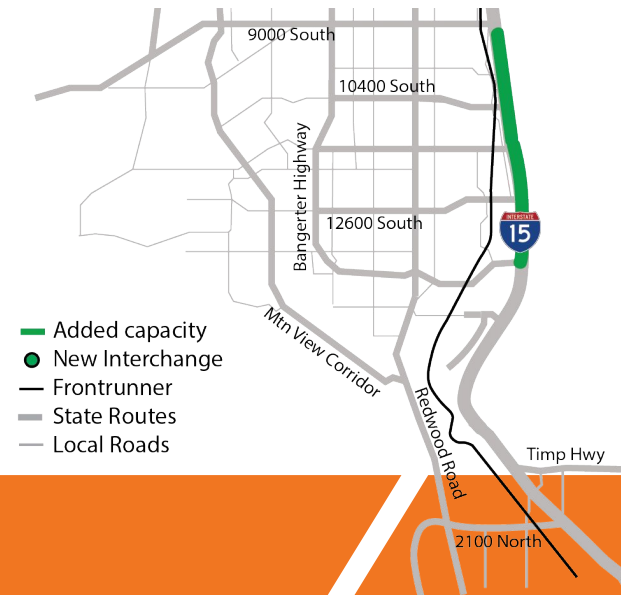
The Collector-Distributor will provide a safer and more efficient transition for motorists entering and exiting I-15 between Bangerter and I-215.

Project Value

\$375 M

Schedule

Estimated Start in Spring 2026



Mountain View Corridor: Old Bingham Highway to Porter Rockwell Boulevard

PROJECT OVERVIEW

The project will add freeway lanes in the median and existing lanes will become frontage roads. The east-west cross streets will become grade-separated or interchanges with slip ramps.

East-west roads will increase in capacity from increased signal timing. Over 70,000 vehicles per day forecasted by 2030.

Project Value

\$490 M

Schedule

Estimated Start in Spring 2028



Bangerter Highway Interchanges: 9800 South, 10400 South, 12600 South, 13400 South

PROJECT OVERVIEW

These interchanges improve mobility along Bangerter Highway and east-west cross-streets by providing grade-separation between north-south motorists and east-west traffic.

The project benefits will improve travel time in the peak direction by 10 minutes and reduce east-west delays by 50%. Eliminates long queues extending from the intersections.

Project Value

\$315 M

Schedule

9800 South & 13400 South
Estimated Start in Spring 2023

