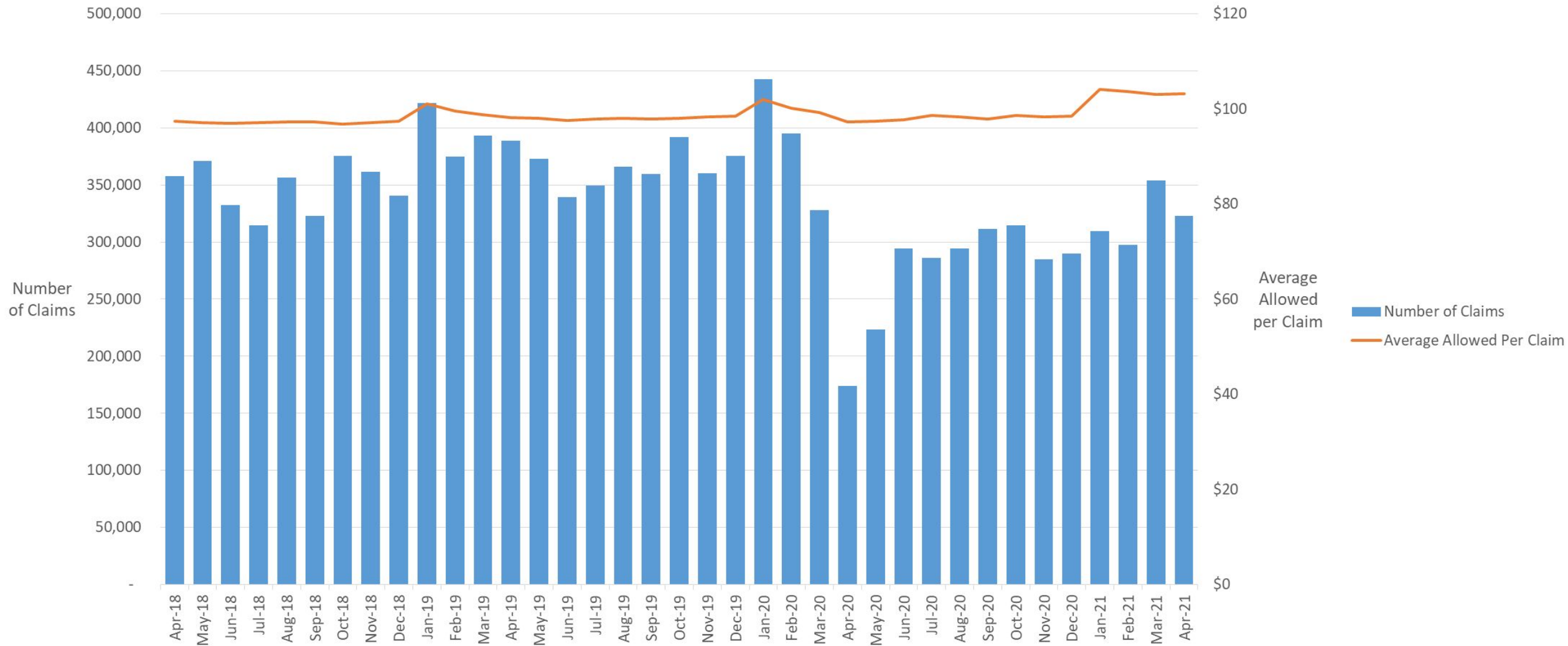
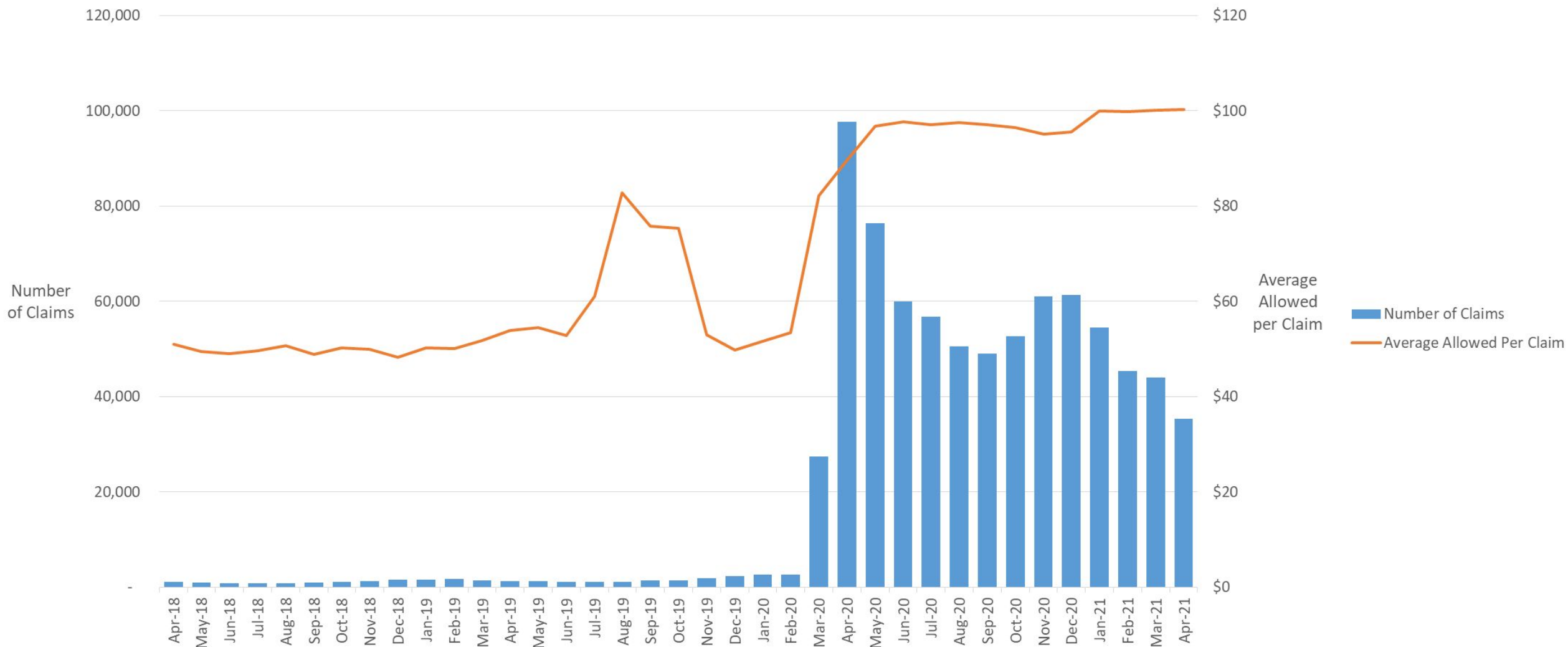


Counts of In-Office Claims and Average Allowed Amount per Month in Utah April 2018-April 2020



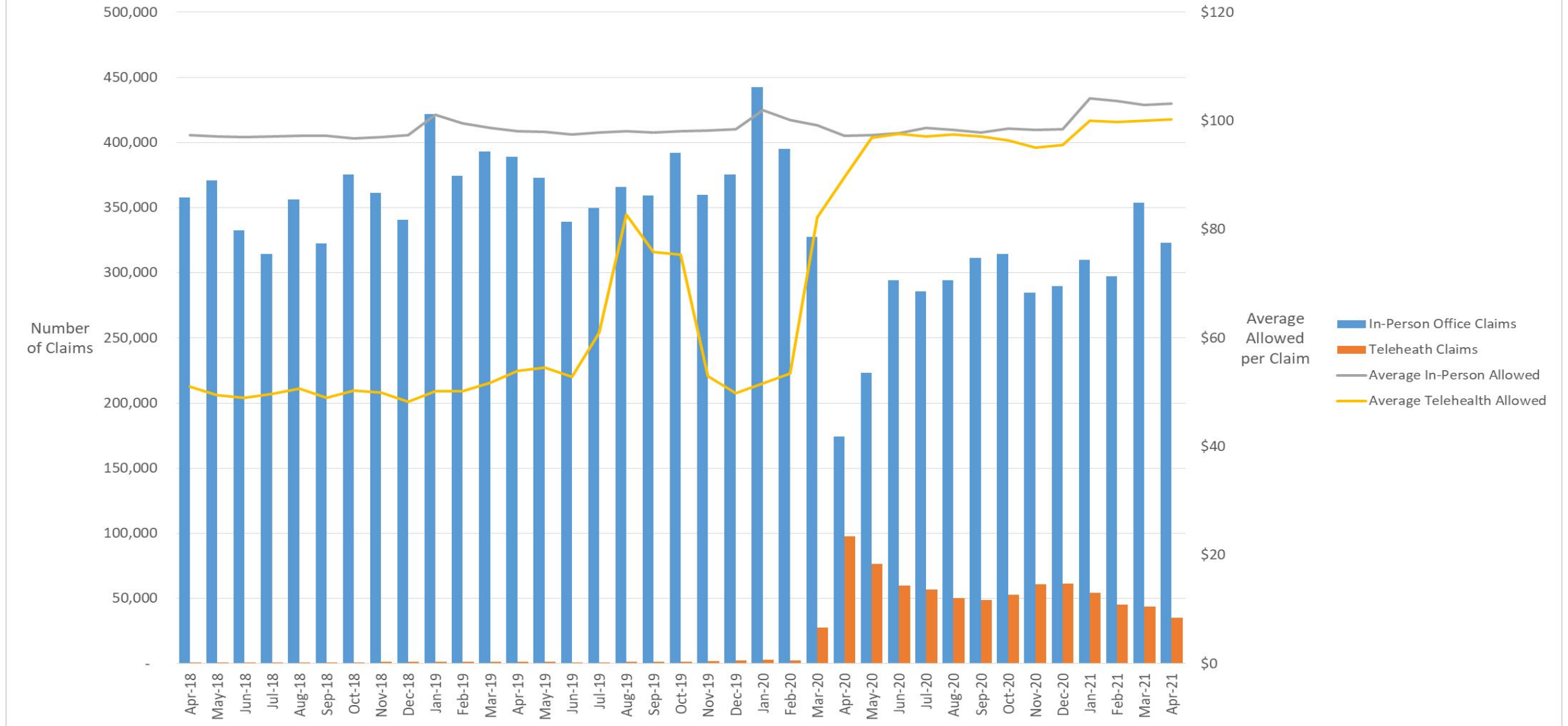
This chart represents the total number of in office visit claims, per month, in the state of Utah, from April 2018 through April 2021. The orange line represents the average of the allowed amounts for all claims for the given month. This includes all lines of business, Commercial, Medicaid and Medicare.

Counts of Telehealth Claims and Average Allowed Amount per Month in Utah April 2018-April 2020

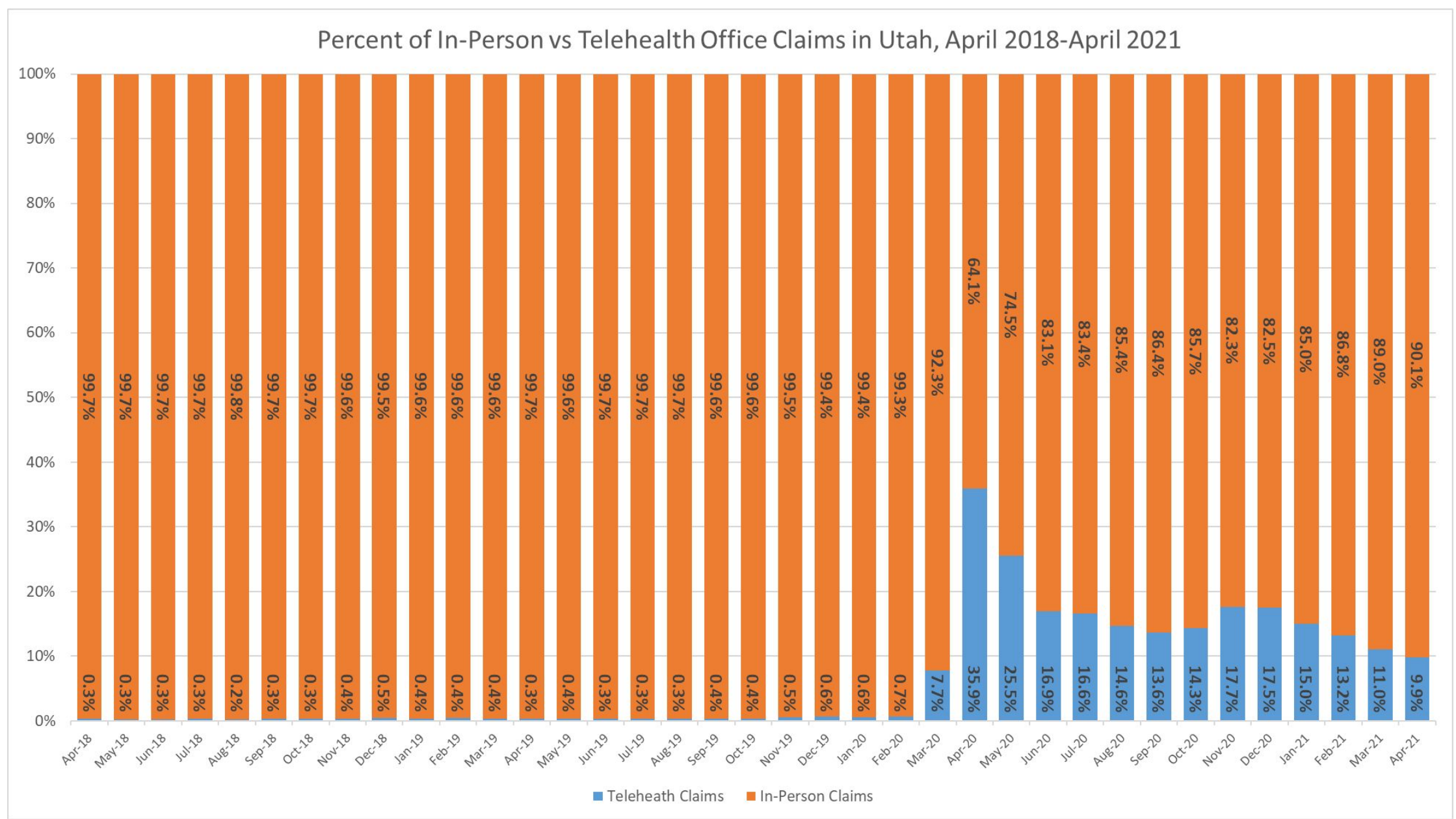


This chart represents the total number of telehealth visit claims, per month, in the state of Utah, from April 2018 through April 2021. The orange line represents the average of the allowed amounts for all claims for the given month. This includes all lines of business, Commercial, Medicaid and Medicare. *Note: The increase in the average telehealth cost per claim from August to October 2019 seems to be caused by claims received from one reservation provider with high allowed amounts. Due to the low amount of telehealth claims during that time these claims have a large impact on the total average allowed amounts for telehealth claims.

Number and Average Allowed per Claim by Telehealth Indicator

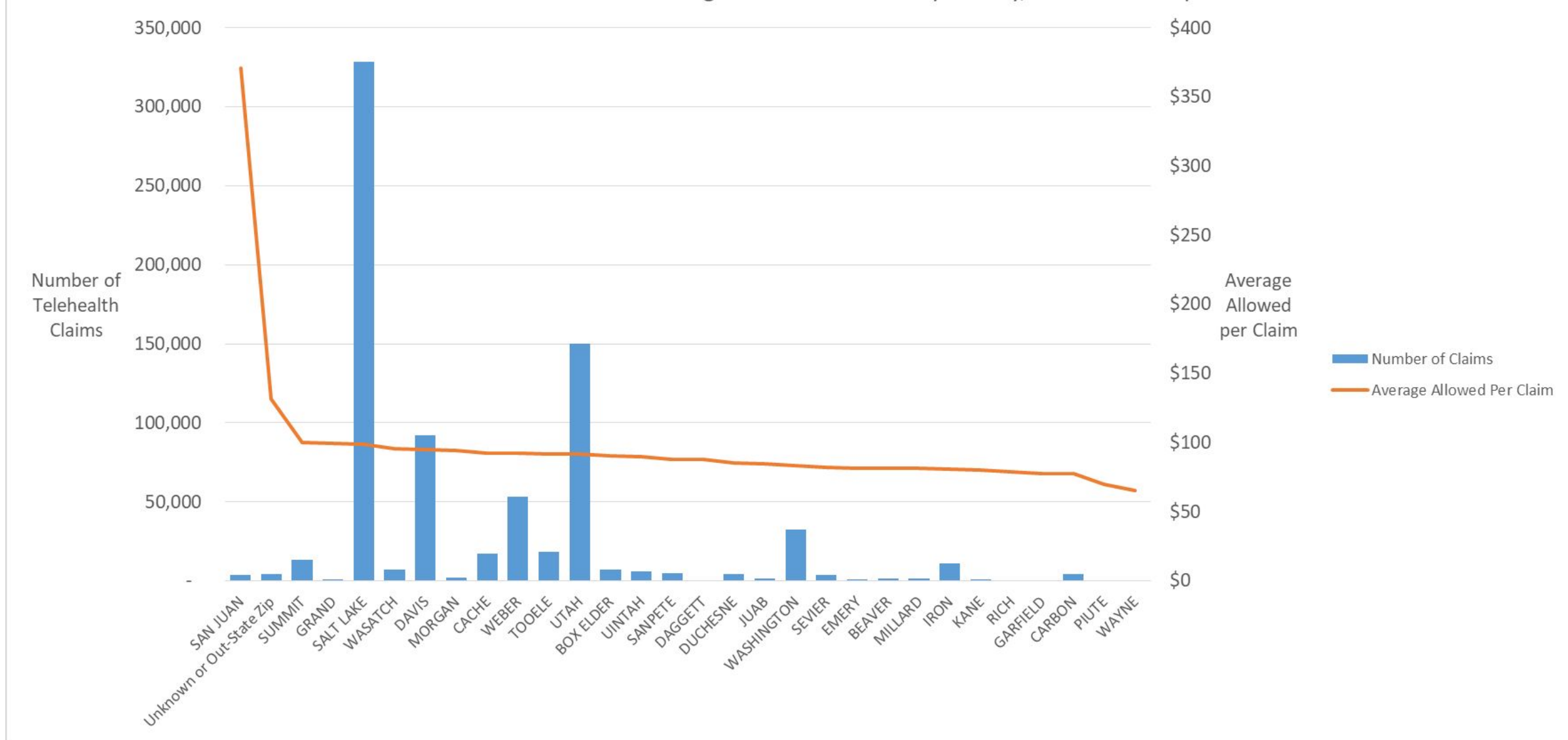


This chart represents the total number of telehealth and in-person visit claims, per month, in the state of Utah, from April 2018 through April 2021. The yellow line represents the average of the allowed amounts for telehealth visits, the gray line for in-person visits.



This chart shows the proportion of claims that are for in-person visits versus telehealth. From April 2018-February 2020, telehealth claims represent less than 1% of visits, until March and April 2020, where there is a notable increase. The trend seems to go downward for telehealth claims from November-April 2021.

Counts of Telehealth Claims and Average Allowed Amount by County, March 2020-April 2021



In this chart the blue bars represents the total number of telehealth visit claims, by patient county, in the state of Utah, from March 2020 through April 2021. The orange line represents the average of the allowed amounts for telehealth claims for the given county. This includes all lines of business, Commercial, Medicaid and Medicare.