



UTAH DEPARTMENT OF  
**HEALTH**

COVID-19 Impact

*Recommendations to Better Protect our Vulnerable Populations  
and Prepare our Programs in Times of Crises*

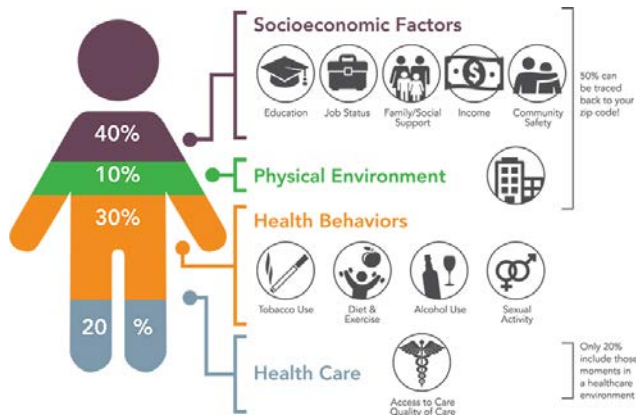
Social Services Appropriations Subcommittee

October 19, 2021

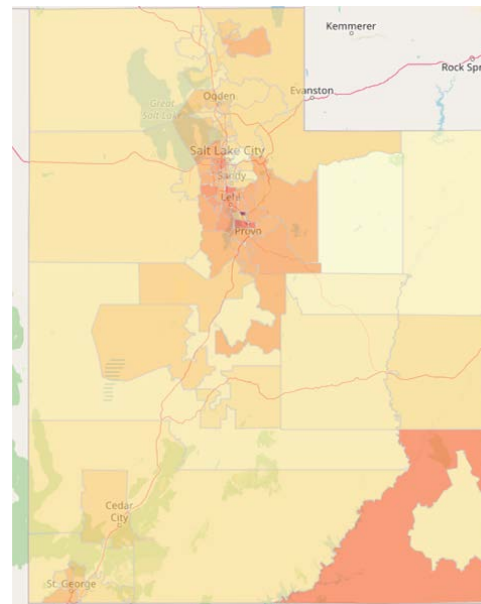


# Disparities Exacerbated by COVID-19

COVID-19 exacerbated existing health disparities, while also creating new ones



Source: Institute for Clinical Systems Improvement, Going Beyond Clinical Walls: Solving Complex Problems (October 2014)



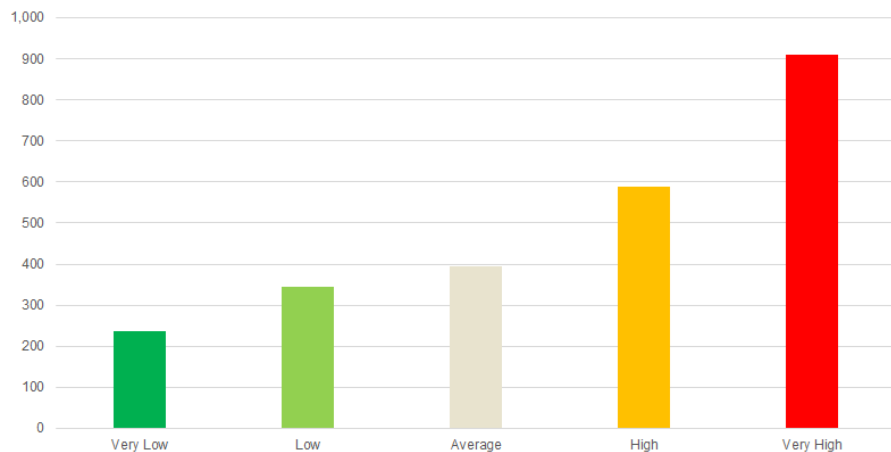
Vulnerable groups are **underserved and underrepresented populations** who are negatively affected by multiple social determinants of health and, because of that, they have **limited resources and ability to cope with the effects of the pandemic**.

# What was the Impact on Vulnerable Populations?

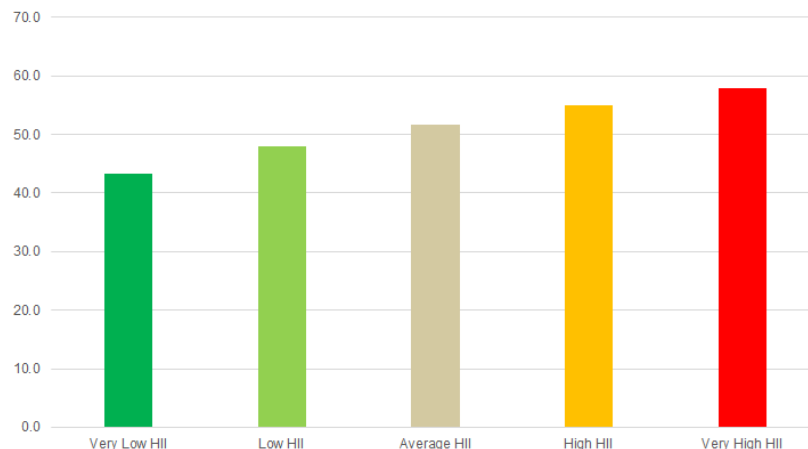


The Health Improvement Index is a measure of **social and economic disparity**. The higher the index, the greater the opportunity to advance health equity in the area.

Case Incidence Rate per 100,000 Mar 1  
- Jun 15 by Health Improvement Index



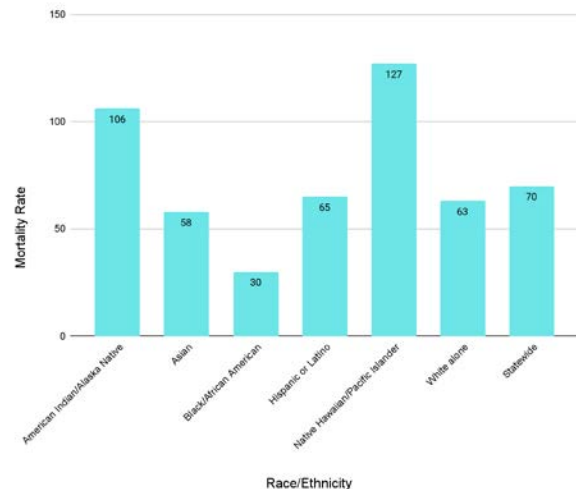
Percentage Unvaccinated Age 16+, April 19  
by Health Improvement Index



# What was the Impact on Vulnerable Populations?



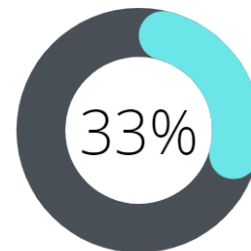
Racial and Ethnic COVID-19 Mortality Rate/100,000 Population



Native Hawaiians and Pacific Islanders have the **highest mortality rates**, followed by American Indian

**3x**

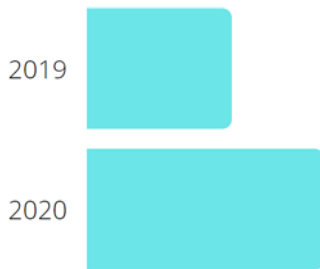
The mortality rates compared to the national average for **people with intellectual and developmental disabilities**



Of all confirmed COVID-19 deaths are attributed to **LTCFs**



Increase in those **experiencing homelessness** from 2019 to 2020



**Food insecurity** in Utah increased from 11% (2019) to 18% (2020)



40% of people hospitalized had an **underlying condition**

\*

# What did we learn from COVID-19 about the needs of our **programs** serving Vulnerable Populations?



## **Programs and partners that need additional funding and staffing to better prepare and protect Vulnerable Populations:**

- Office of Health Disparities
- Public Information Office
- Epidemiology and Health Informatics
- Healthcare-Associated Infections and Antimicrobial Resistance Program (HAI/AR)
- Bureau of Emergency Medical Services and Preparedness (BEMSP)
- Office of the Medical Examiner (OME)
- Quarantine & Isolation (Q/I) Sites and Wraparound Services
- Healthcare Systems and Preparedness

## **Resources and Capacity Building to better prepare staff and the public:**

- Annual Personal & Family Preparedness and Workplace Preparedness
- Annual FEMA disaster response training
- Health Equity, the Social Determinants of Health, and working with Communities
- Ongoing certifications and partnerships

# Recommendations to Better Protect our Vulnerable Populations and Prepare our Programs in Times of Crises



## Health and Social Service Systems

Rental/utility assistance and affordable housing, food assistance, paid sick leave, and childcare subsidies



## Workforce, staffing, and programs

Community Health Workers, Community Based Organizations, the Emergency Response Program



## Improving access to information and healthcare services

Telehealth services, improved internet access and digital literacy



## Improved data monitoring and systems

Utilize use of Health Improvement Index Areas in data reports and monitoring

