

# BRIDAL VEIL FALLS

NATURAL RESOURCES , AGRICULTURE, AND ENVIRONMENT INTERIM COMMITTEE  
WEDNESDAY, NOVEMBER 17





# AGENDA

## 01

STAKEHOLDER FINDINGS

## 02

PUBLIC ENGAGEMENT RESULTS

## 03

ECONOMIC ANALYSIS

## 04

SUMMARY OF FINDINGS

# STAKEHOLDER FINDINGS

## PUBLIC

- Utah Open Lands
- Conserve Utah County
- Utah County Trail Alliance
- Central Utah Water

### FINDING

High level of enthusiasm for the planning effort. Strong support of further conservation effort. Public and conservation groups want to be kept in the loop. Conservation organizations willing to volunteer time/personnel to support outreach efforts.

## GOVERNMENTAL

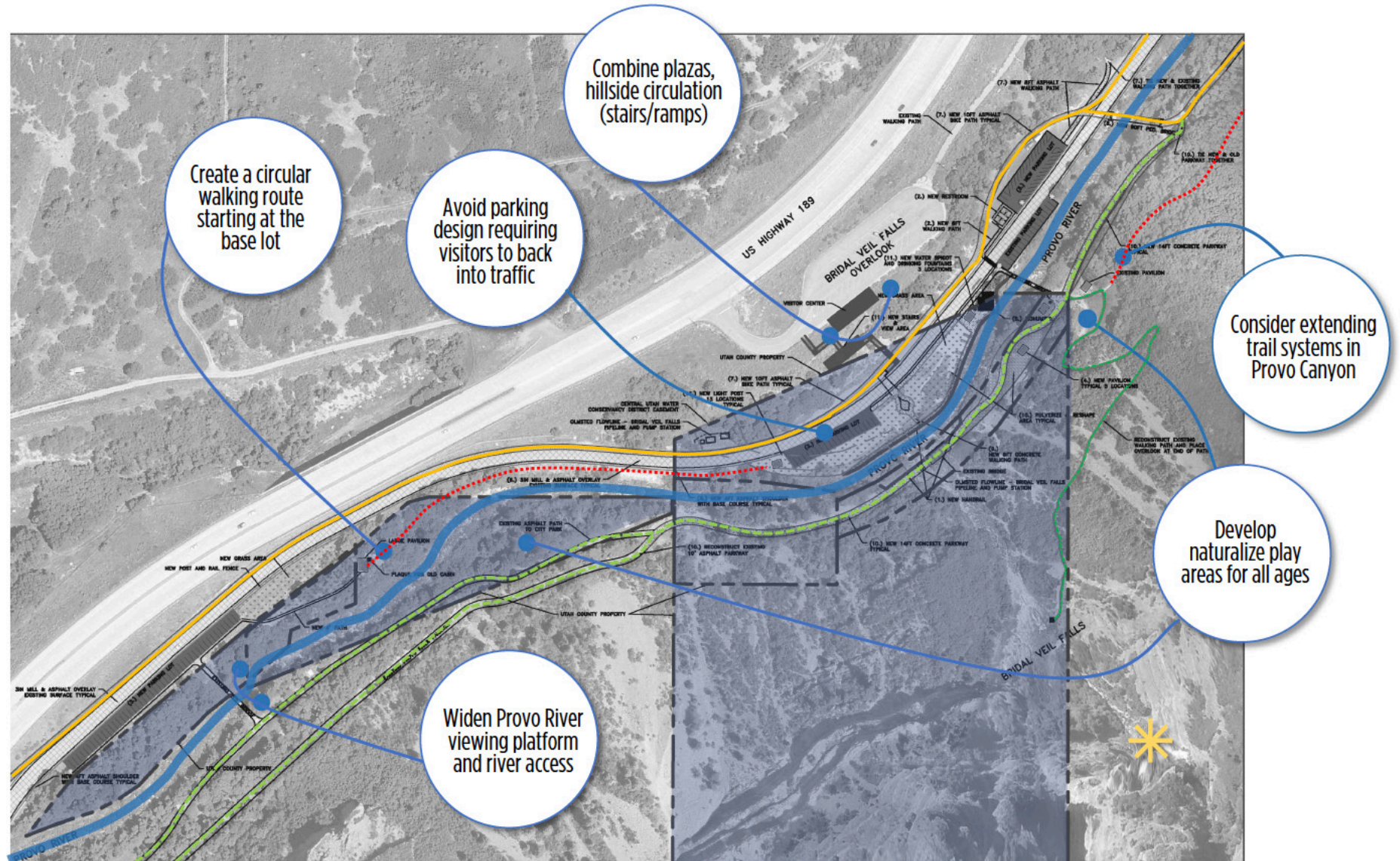
- Utah County
- Provo City
- Orem City
- Wasatch County
- US Forest Service
- UDOT

### FINDING

Varied levels of enthusiasm for the planning effort. Project seen as a Utah Legislature and Utah County effort which they are willing to support, but would like to know in what capacity.

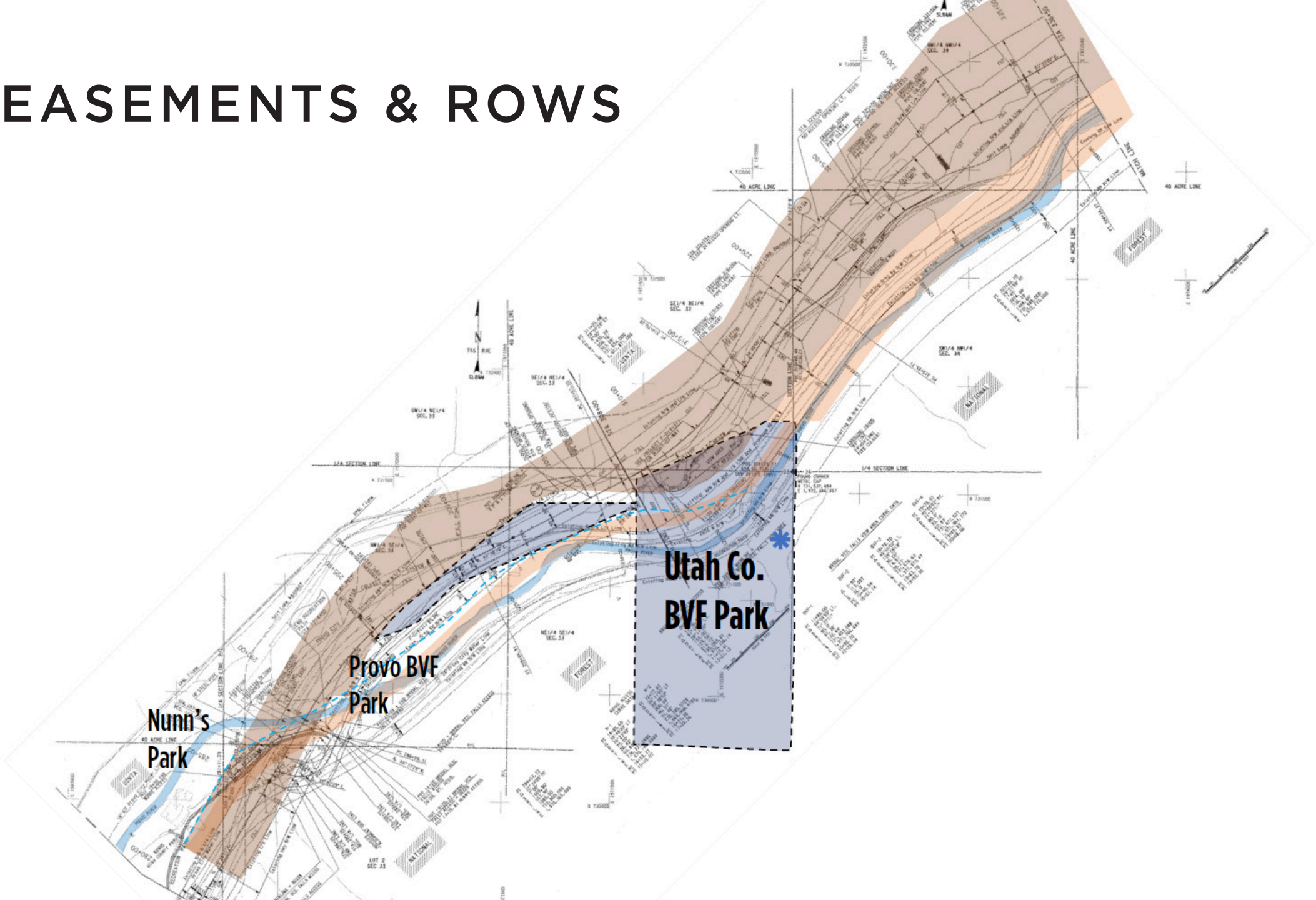


# CONCEPT PLAN ANALYSIS



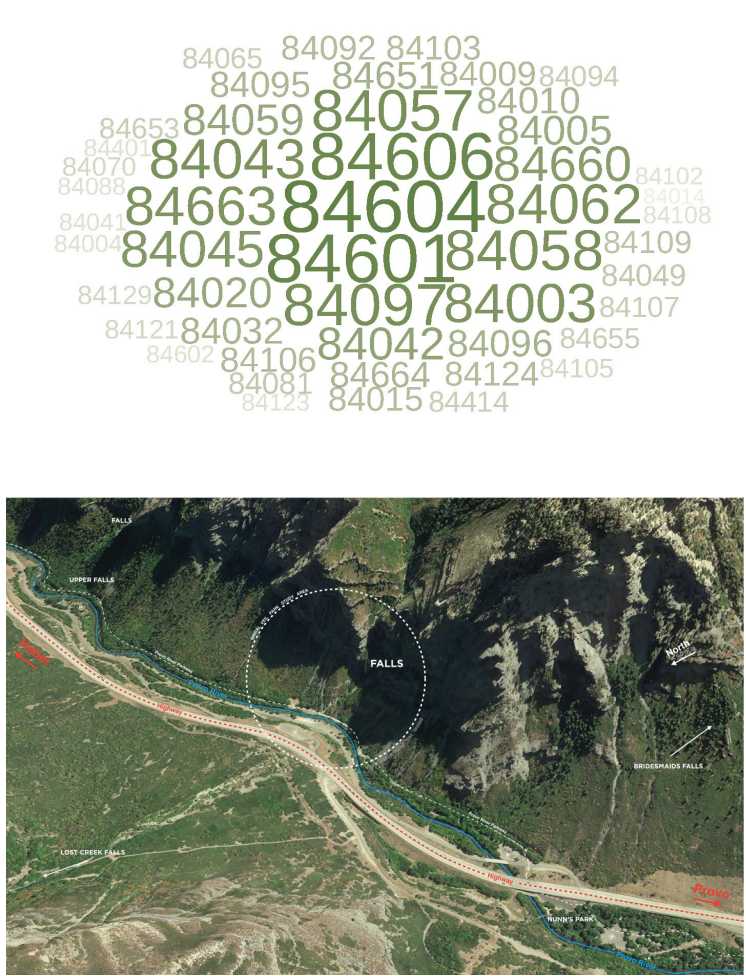


# EASEMENTS & ROWS



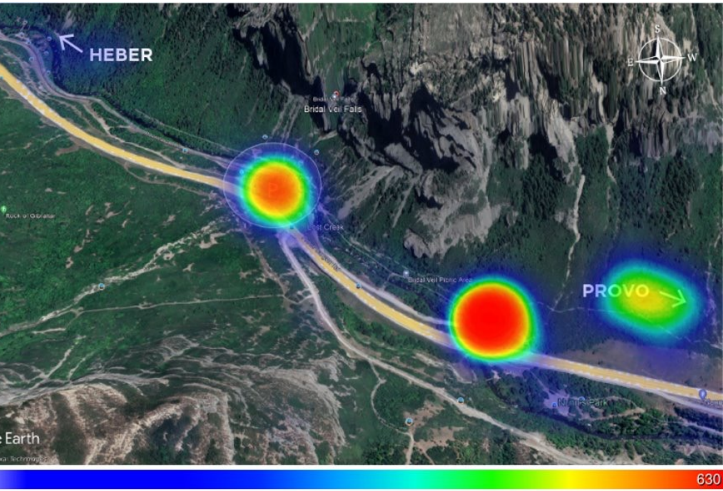


# PUBLIC ENGAGEMENT FINDINGS

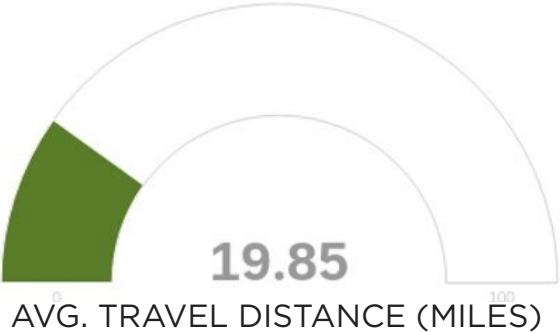
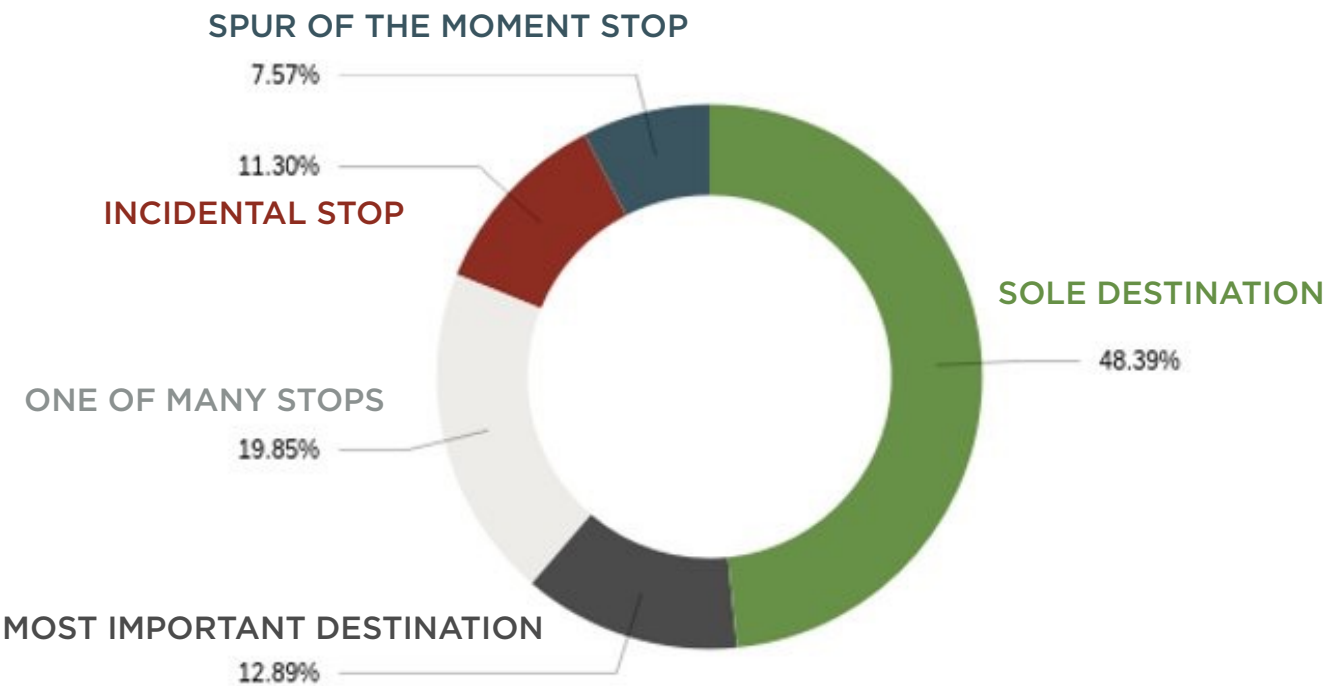




# ARRIVING BY VEHICLE

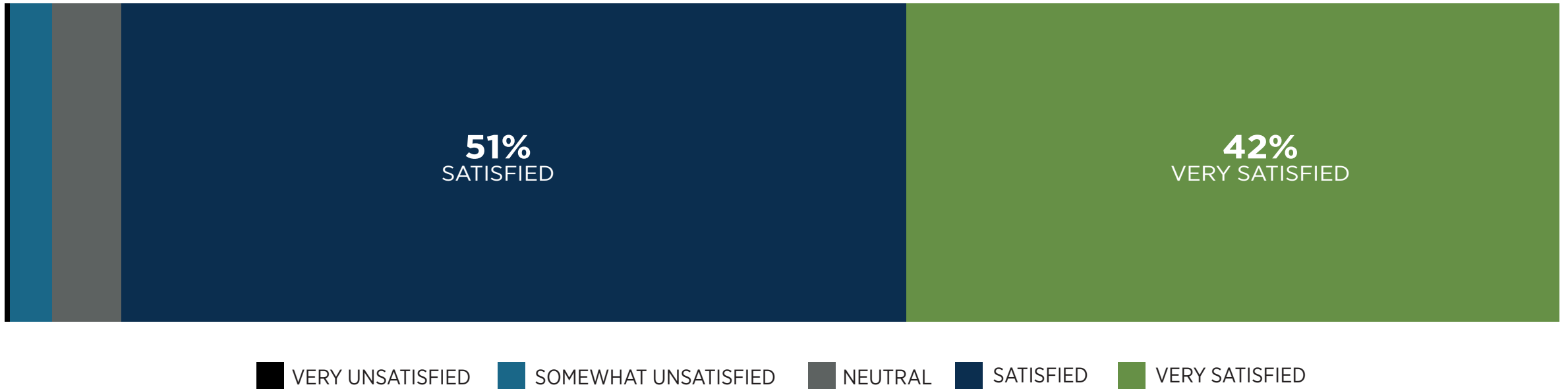


# ARRIVING BY FOOT

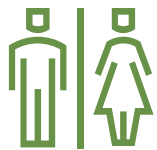




# PARK SATISFACTION



## DESIRED IMPROVEMENTS



IMPROVE/ADD  
RESTROOM FACILITIES



IMPROVE SAFETY  
MEASURES



IMPROVE  
ACCESSIBILITY



IMPROVE/EXPAND  
PARKING



PEDESTRIAN  
TRAILS



HIKING TRAIL  
SYSTEMS



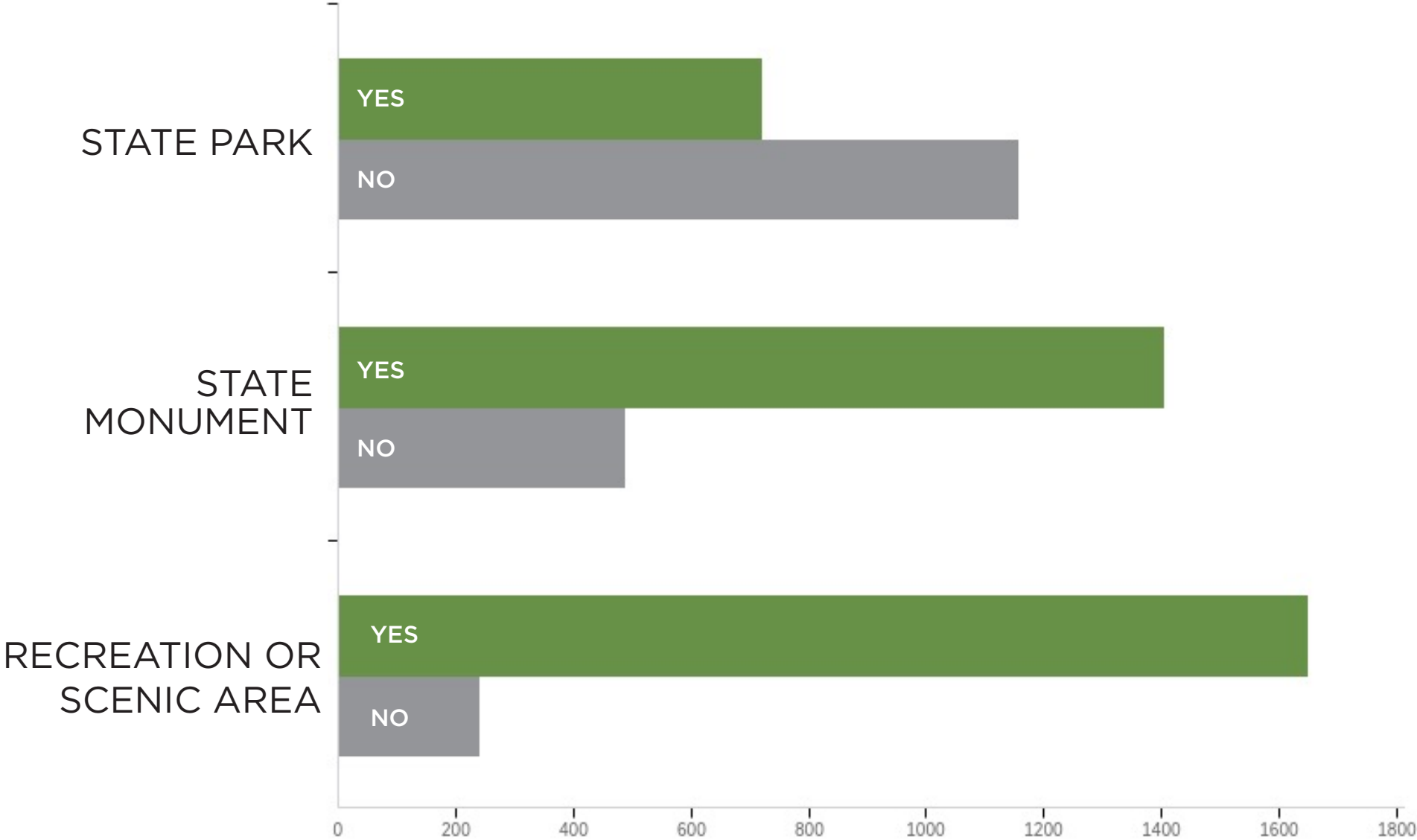
BIKING TRAILS



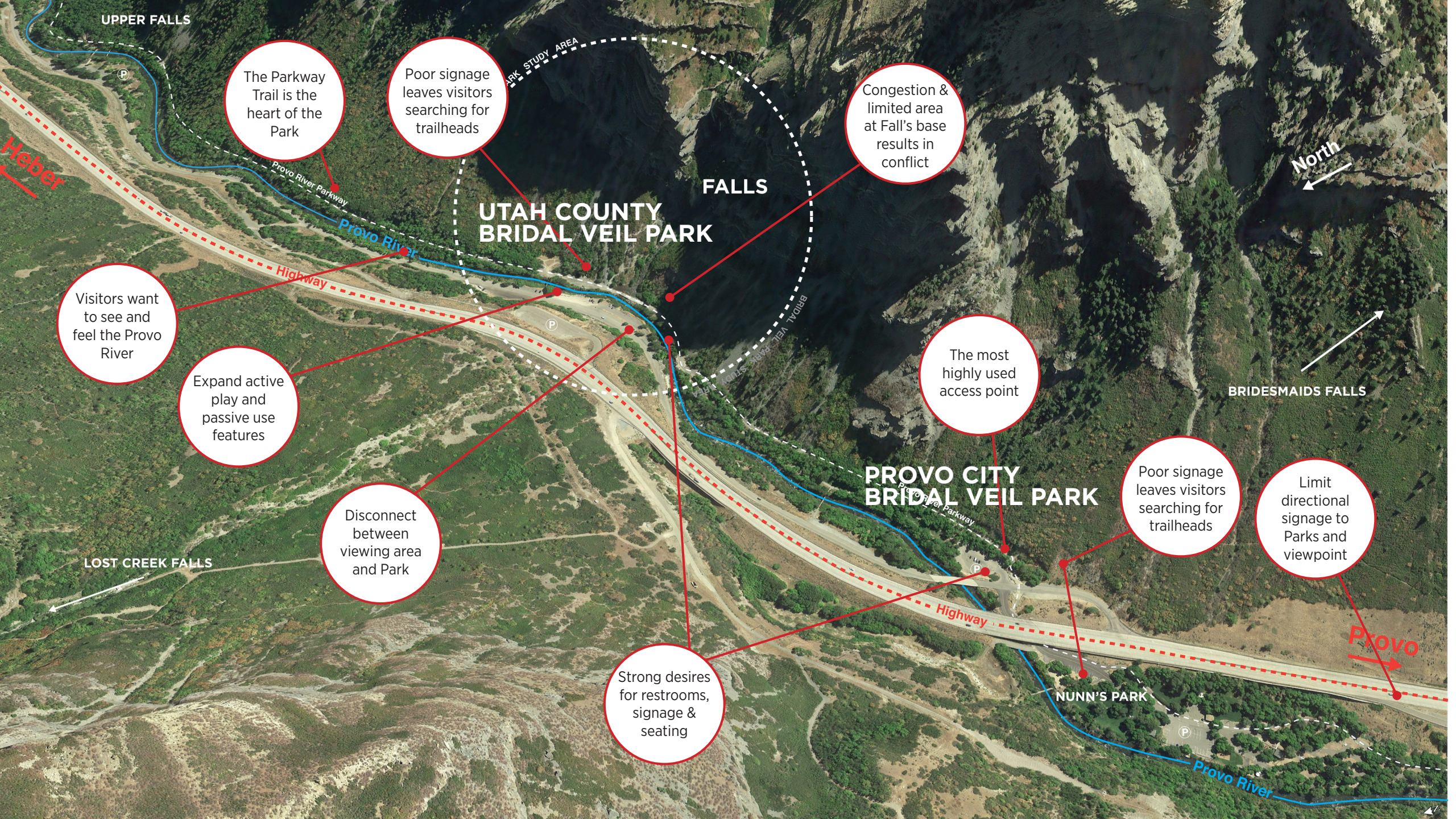
EXPAND ACCESS TO  
PROVO CANYON PARKS



# STATE MANAGEMENT SUPPORT







UPPER FALLS

The Parkway Trail is the heart of the Park

Poor signage leaves visitors searching for trailheads

## UTAH COUNTY BRIDAL VEIL PARK

FALLS

Congestion & limited area at Fall's base results in conflict

North

Visitors want to see and feel the Provo River

Expand active play and passive use features

Disconnect between viewing area and Park

The most highly used access point

BRIDESMAIDS FALLS

## PROVO CITY BRIDAL VEIL PARK

Poor signage leaves visitors searching for trailheads

Limit directional signage to Parks and viewpoint

Strong desires for restrooms, signage & seating

LOST CREEK FALLS

NUNN'S PARK

Provo



# ECONOMIC ANALYSIS

## GROWTH

- Population Growth Projections
  - Utah County
  - Wasatch County
- Growth of Higher Ed Enrollment
- Tourism
  - State Park Visitation
  - Transient Room Tax

## LIMITATIONS

- Disconnected Amenities
- Parking
- Park Size
- Quality of Experience

# ECONOMIC ANALYSIS

## EXPENSES

- Operating Costs State Parks
  - \$42,000-248,000/year average
  - Average cost of \$0.63 per visitor
- Operating Cost Bridal Veil Falls Park
  - \$41,000/year with 3-5%/yr. growth
- Capital Costs
  - Phase 1 of BVF Park Concept Plans
    - \$910,000
  - Phase 2 – including Visitor Center
    - unknown

## REVENUE

- Revenue Projection
  - State Park Revenues – none as a no fee area
  - State Park Program Revenues – fees for concessions, pavilion rentals, educational classes, guided tours (require construction of facilities)
- Potential Funding Sources
  - Parking Fees
  - Existing – Transient Room Tax
  - New Revenue Sources to Utah County
  - Legislative Appropriation (could come from State TRT)
    - Grants, Donations and Sponsorships
    - Partnerships



# FINDINGS

Bridal Veils Falls Park, does not fit the criteria needed to be named a State Park or a State Monument.

There is considerable demand to craft further measures for natural resource preservation, increased recreational opportunities, means to provide broader/more coordinated corridor planning and management, and increased site access.

Public opinion favors State management. Thus, the CRSA team recommends finding opportunities for State management as a recreation or scenic area.