

COVID-19 Responses in K-12

Creating Solutions in Response to the Pandemic



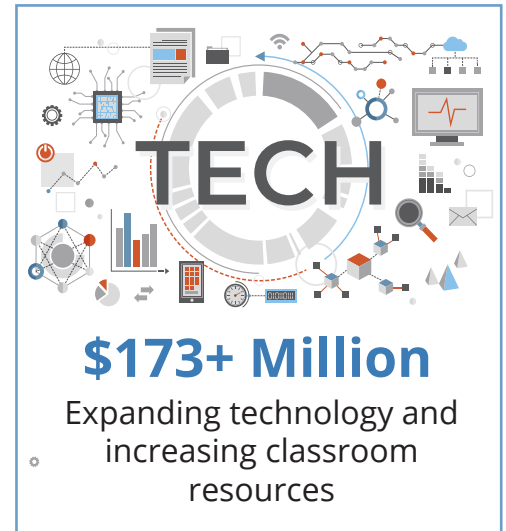
Where We Are Now

Utah schools have been leading the way responding to student needs due to COVID-19 utilizing federal resources. Each local education agency (LEA) submitted a plan on using funding to meet local needs. These plans are now in action, serving our students as we respond to the pandemic and re-imagine education.



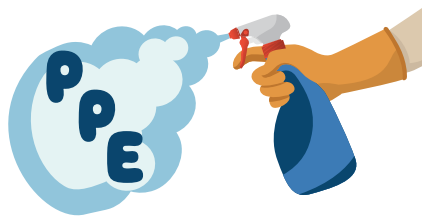
\$405+ Million

Increasing current Utah teacher salaries, benefits and hiring support staff (ex. paraprofessionals) to meet student learning needs



\$48.1+ Million

Providing personal protective equipment (PPE), nursing staff, and additional school sanitization



\$95+ Million

Air quality improvements and other needs to ensure student safety in school



OTHER COSTS

\$61+ Million

Other COVID-19 related expenses. For example, supporting transportation for school nurses between schools in rural Utah

\$60+ Million

Student and teacher mental health supports and resources



\$64+ Million

Summer/afterschool programs for K-12 students in response to COVID-19 needs

\$8.5+ Million

Funding for LEA COVID-19 coordination and compliance



Total: \$914.6+ Million

Provided directly to Utah LEAs in local grants for COVID-19 response from federal awards



Visit <https://schools.utah.gov/coronavirus> to learn more.

Coordination of response efforts for LEAs with other agencies

Region	LEA	Budget	Description
Davis County	Davis District	\$1M	COVID-19 aids to provide testing and contact tracing

Providing principals with the resources to address the needs of their individual schools

Region	LEA	Budget	Description
Box Elder County	Box Elder District	\$550K	Remediation for students with credit deficits, individual instruction for elementary student remediation, and funding for staff to monitor and arrange evening classwork

Activities to address the unique needs of students, including students experiencing homelessness and students at-risk of academic failure

Region	LEA	Budget	Description
Salt Lake County	Esperanza Elementary	\$216K	Hire mathematics and English instruction assistants during school and summer to support students learning English and students at-risk of academic failure
Cache County	Bear River Charter	\$50K	Hire tutors and mentors for at-risk students
Washington County	Vista at Entrada Academy	\$100K	Summer learning for at-risk students and hiring personnel with expertise for students learning English
Utah County	Nebo District	\$500K	Summer bridge program for special education students

Planning for, coordinating, and implementing activities during long-term closures

Region	LEA	Budget	Description
San Juan County	San Juan District	\$500K	Contract services for personal online learning/ credit recovery and parent engagement
Salt Lake County	American Academy of Innovation	\$15K	Summer school/distance remediation courses to facilitate credit and learning recovery for distance learners
Iron County	Iron County District	\$80K	District mobile app for communication with parents and additional resources
Emery County	Emery School District	\$50K	Community Engagement Coordinator
Salt Lake County	Entheos Academy	\$54K	Family liaison and improve parent communication system

Purchasing educational technology to support student access to learning

Region	LEA	Budget	Description
Grand County	Grand County District	\$42K	Student devices to achieve 1:1 ratio for access to online learning
Juab County	Juab District	\$300K	Procure student devices and provide 24/7 access to support for learning, intervention, and remediation for students and families
Tooele County	Tooele School District	\$300K	Mobile hotspots, additional Chromebooks, technology for at-home learning access for students

Providing mental health services and supports

Region	LEA	Budget	Description
Cache County	Cache District	\$147K	Hire a school psychologist to provide mental health support for students, and hire a school counselor to assist students with credit deficits
Kane County	Kane County District	\$50K	Provide mental health services for students at risk for struggling due to effects of COVID-19

Summer learning and supplemental afterschool programs

Region	LEA	Budget	Description
Salt Lake County	Utah International Charter	\$100K	Hire teachers, tutors, and COVID testing for summer school instruction
Juab County	Juab District	\$170K	Provide two years of summer and after school programs to close learning gaps and provide intensive support services
Summit County	North Summit District	\$50K	Offer summer reading program for elementary students
Washington County	Washington District	\$3M	Creating summer and after school programs to K-12 students
Millard County	Millard District	\$300K	Offering summer and after school programs focusing on students at-risk or with learning deficits due to COVID-19

Creating accelerated learning opportunities for students in response to COVID-19

Region	LEA	Budget	Description
Salt Lake County	Roots Charter High School	\$77K	Provide tutoring and intervention for students at-risk of not graduating or have fallen behind in credits
Sanpete County	South Sanpete District	\$600K	Provide elementary reading program with two reading coaches for students and supporting extra periods of learning for secondary schools
Rich County	Rich District	\$130K	Procuring student devices and support services for special education students using technology
Duchesne County	Duchesne School District	\$50K	Supporting Basin Online School for over 500 students to increase course access
Juab County	Juab School District	\$226K	Creating “flexible Friday” for tutoring and credit recovery
Box Elder County	Promotory School of Expeditionary Learning	\$100K	Offering a “fifth day” flexible option for in-person or at-home learning and tutoring services
Utah County	Reagan Academy	\$80K	Providing small group intervention with an achievement specialist
Summit County	The Winter Sports School of Park City	\$40K	Offering a Pre-ACT readiness program and college/career planning program
Salt Lake County	Esperanza Elementary	\$400K	Hiring a bilingual counselor and offering parent workshop for coordination of accelerated learning efforts
Salt Lake County	Beehive Academy	\$64K	Offering self-paced credit recovery courses and academic intervention for students during the school year and summer months

Other activities that are necessary to maintain the operation of and continuity of services

Region	LEA	Budget	Description
Sanpete County	North Sanpete District	\$265K	Supporting additional salaries for teachers and teaching assistants for extended school days for 21-22 and 22-23 school years

Other activities that are necessary to maintain the operation of and continuity of services

Region	LEA	Budget	Description
Salt Lake County	Wallace Stegner Academy	\$100K	Supporting the continuation of pay for teachers /staff providing interventions to at-risk students
Salt Lake County	Mountain West Montessori Academy	\$15K	Salaries for personnel for extended school year services for Special Education students, home assessment visits, small group or individual academic interventions
Salt Lake County	Wallace Stegner Academy	\$988K	Offering extended school day, full day Kindergarten, and increasing the number of teachers to reduce class size and offer additional one-on-one tutoring