



CAMPUS VIEW SUITES PHASE III

Campus View Suites Phase III



- 500 Student Beds
- 140,000 Square Feet
- 5 Story Building
- \$62.5 Million Cost (Bond)
- Repaid With Student Rent
- Completion June 2025

Where will it be located?



RIP Nisson 1969-2023

162 Student beds

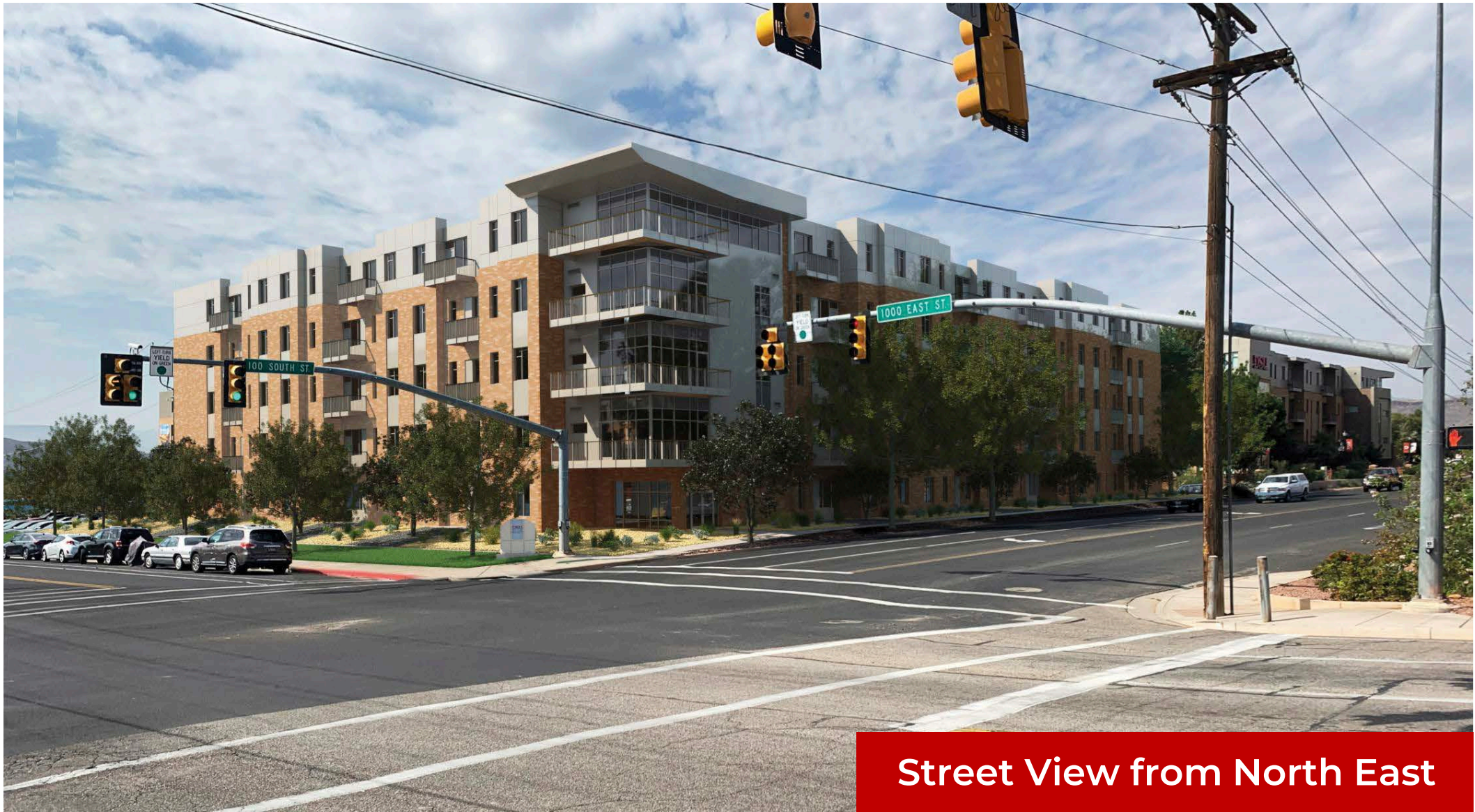


Campus View Suites Phase III



Aerial View from North East

Campus View Suites Phase III

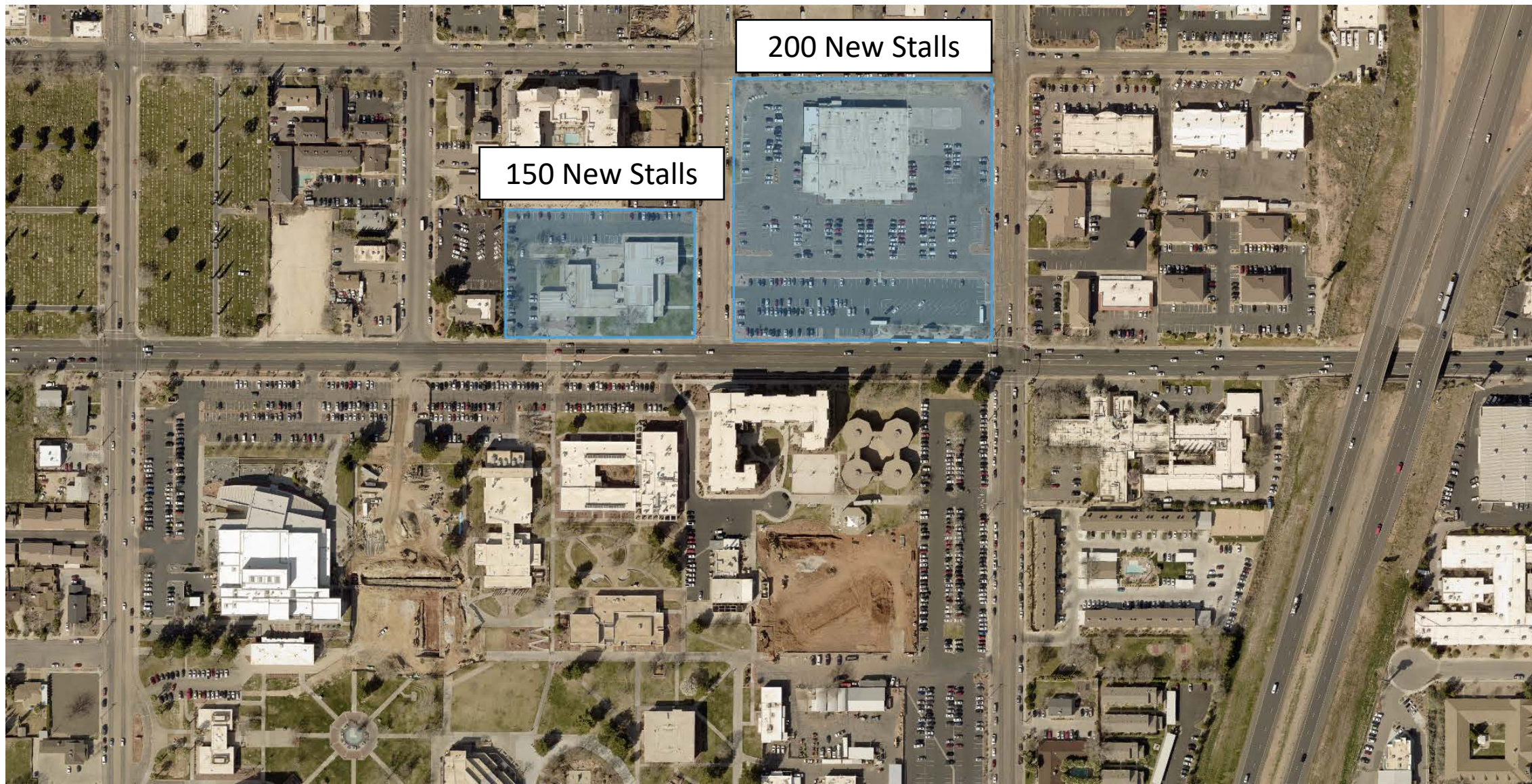


Street View from North East

Larger Bedrooms & Common Space



Future Parking Locations



Fall 2021 Occupancy

On Campus

Student Housing
Occupancy Report
September 8, 2021



ON-CAMPUS:

Building	Occupied	Vacant	Total Beds	Occupancy
Abby	90	0	90	100%
Campus View 1	352	0	352	100%
Campus View 2	534	0	534	100%
Chancellor	30	0	30	100%
Nisson	162	0	162	100%
Dixie View	3	0	3	100%
Morgan	16	0	16	100%
Total On-Campus	1187	0	1187	100%

Off Campus

OFF-CAMPUS:

Building	Occupied	Vacant	Total Beds	Occupancy
Campus Villa	82	0	82	100%
Canyonlands/Brook	370	0	370	100%
Dixie 9	39	0	39	100%
Dixie Cove	36	0	36	100%
Dixie South	84	0	84	100%
Pride of Dixie	26	4	30	87%
Raintree	134	0	134	100%
Red Mountain	288	0	288	100%
Red Sands	100	0	100	100%
Red Rock Ridge	648	0	648	100%
Tabernacle	265	0	265	100%
The Stay	181	0	181	100%
7th and U	144	0	144	100%
605 Place	416	0	416	100%
Total Off-Campus	2813	4	2817	100%

Campus View III Financing

- Bond Amount - \$62.5 Million (Approximately)
- Repayment Source – Student Rents (Bonding Umbrella)
- Operations & Maintenance – Student Rents
- Pricing Requirement – 5% Annual Rent Increase for Existing Beds
- Potential to Refinance Campus View Suites I - \$50 to \$100K Savings

Campus View Suites I



- 352 Student Beds
- 4 Story Building
- 97,000 Square Feet
- \$22.5 Million Cost
- Completion Aug 2016

Campus View Suites II



- 534 Student Beds
- 5 Story Building
- 145,000 Square Feet
- \$45 Million Cost
- Completion July 2021

Thank You

