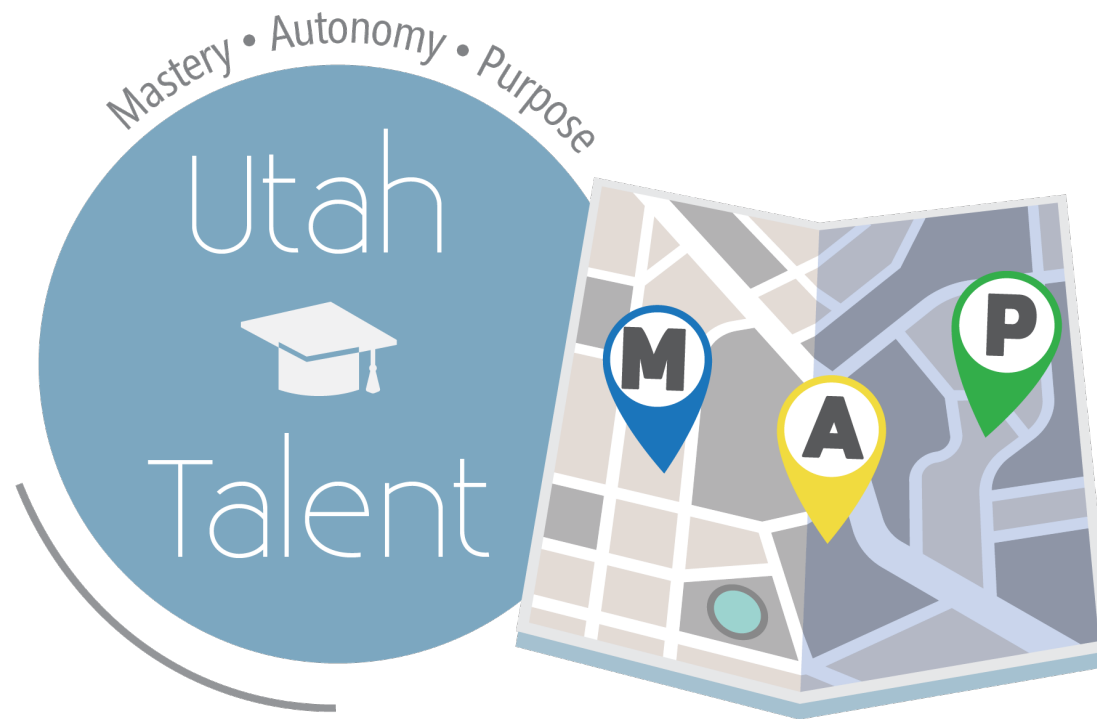




# Performance Measures

Utah State Board of Education  
January 26, 2022

# Portrait of a Graduate





## OUR VISION

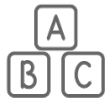
Upon completion, all Utah students are prepared to succeed and lead by having the knowledge and skills to learn, engage civically, and lead meaningful lives.

## MISSION

The Utah State Board of Education leads by creating equitable conditions for student success: advocating for necessary resources, developing policy, and providing effective oversight and support.



# GOALS



Early Learning



Personalized  
Teaching & Learning



Safe & Healthy  
Schools



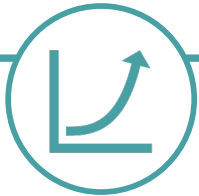
Effective Educators  
& Leaders



# Existing USBE Performance Measures

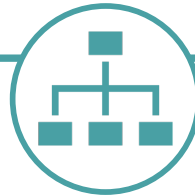
## Education Elevated

Measures progress of the system to our vision



## Strategic Plan Goals & Strategies

Measures progress of the USBE strategic plan



## Line Item Measures

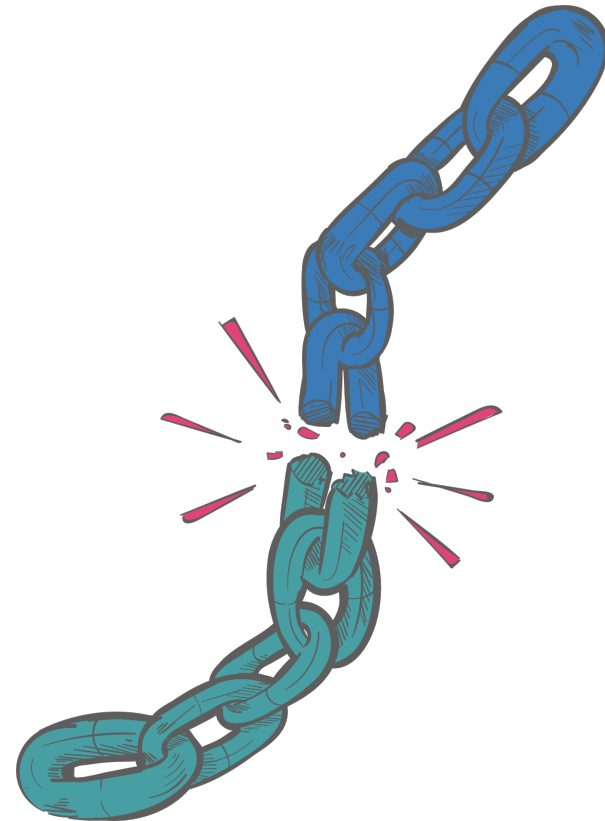
Measures progress for specific budget line item



# Existing USBE Performance Measures

## Current Challenges

- ➡ Utilizing Inputs, Activities, Outputs, and Outcomes
- ➡ Unclear Connection with USBE Administrative Functions and Operational Outcomes
- ➡ Role of LEAs is Unclear
- ➡ Lacks Coherence



# Proposed: Reciprocal Performance Framework

Statewide  
Outcomes  
and  
Indicators

System  
Opportunity  
Indicators

USBE Capacity and Support

Local Capacity and Support

School Quality





# Reciprocal Performance Framework

## Statewide Outcomes and Indicators

- Graduation
- Proficiency in core academic subjects (grades 3-8)
- Proficient in literacy and numeracy in grades 1 - 3
- Student readiness for kindergarten
- Readiness coursework completion
- ACT
- **Student engagement**
- **Teacher engagement**







# Reciprocal Performance Framework

## System Opportunity Indicators

### **Access/opportunity by socio-economic status, special education, other characteristics**

- ➡ Student outcome measures disaggregated by student group
- ➡ Course selection and enrollment patterns by student group

### **Essential conditions for ensuring opportunity**

- ➡ Funding: Equitable distribution of resources across LEAs
- ➡ Educators: Reasonably equal access to experienced, qualified, effective educators across LEAs
- ➡ Content: High-quality competencies aligned to workforce needs





# Reciprocal Performance Framework

Statewide  
Outcomes  
and  
Indicators

System  
Opportunity  
Indicators

USBE Capacity and Support

Local Capacity and Support

School Quality





# Reciprocal Performance Framework

## USBE Capacity and Support

### **USBE role in creating essential conditions for ensuring opportunity**

- Funding: Efficient and effective administration of federal & state grants
- Educators: Measuring quality for teacher licensing, endorsement, educator preparation programs, educator evaluation standards

### **USBE Agency Effectiveness and Efficiency**

- Key Performance Indicators (KPIs) on Operational Outcomes
- Key Performance Indicators on Strategic Goals and Indicators





## Local Capacity and Support

### **LEA role in creating essential conditions for ensuring opportunity**

- ➡ Funding: Equitable distribution of resources across schools
- ➡ Educators: Reasonably equal access to experienced, qualified, effective educators across schools within the district

### **LEA effectiveness and efficiency measures**

- ➡ Key Performance Indicators on Operational Outcomes
- ➡ Key Performance Indicators on Strategic Goals and Strategies

### **Aggregate performance of schools aligning with school accountability**





## School Quality

### **School role in meeting student needs**

- ➡ Student engagement
- ➡ School climate experiences

### **School role in enabling student success**

- ➡ Student Growth and Achievement Outcomes
- ➡ Student Demonstration of Competency including Portrait of a Graduate



# Reciprocal Performance Framework

Statewide  
Outcomes  
and  
Indicators

System  
Opportunity  
Indicators

## USBE Capacity and Support

USBE Role in  
Creating  
Essential  
Conditions  
for Ensuring  
Opportunity

USBE  
Agency  
effective-  
ness and  
efficiency

LEA role in creating  
essential conditions  
for ensuring  
opportunity

LEA effectiveness  
and and efficiency  
measures

Aggregate  
performance of  
schools

## Local Capacity and Support

### School Quality

School role in  
meeting student  
needs

School role in  
enabling student  
success



# Reciprocal Performance Framework

## SOLUTIONS

- Aligns efforts to outputs and outcomes across K-12
- Clearly develops KPI's to address USBE/LEA operational outcomes
- Demonstrates alignment with existing responsibilities across communities in K-12
- Creates Coherence





# Feedback on Framework?

*USBE staff are seeking your input on this draft to inform next steps for agency performance measures.*








# Thank You

Sarah Young  
Chief of Staff

[sarah.young@schools.utah.gov](mailto:sarah.young@schools.utah.gov)

Utah State Board of Education





# Performance Reporting and Efficiency Requirements (*H.B. 326, 2021*)

- Formalized and expanded existing performance measurement practices for programs and projects receiving Utah taxpayer dollars
  - Including requiring measurement of any programs receiving new funding of \$10,000 or greater
- These performance data help both the executive and legislative branches understand the work of taxpayer-funded programs and their impact

