

# ***University of Utah Computing & Engineering Building***

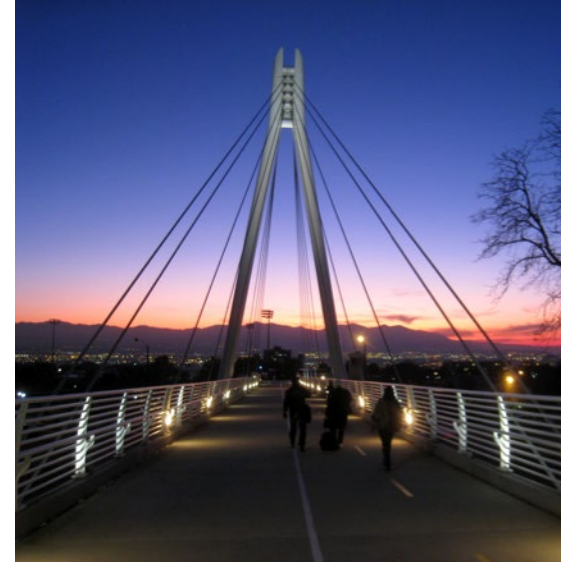


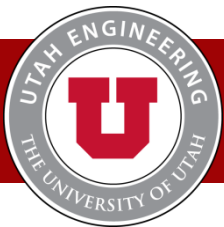




# University of Utah

- *Flagship University*
  - *PAC-12 Athletics (and Academics)*
  - *Association of American Universities*
  - *Carnegie Classification of Research 1*
- **9,174 BS, MS & Doctoral** graduates
- **18** colleges, **100** majors
- *Engineering*
  - *Computer Graphics*
  - *Desktop Publishing*
  - *Artificial Organs*
  - *Digital Music*
  - *Brain-Computer Interfaces*
  - *98 Spin-out Companies since 2006*





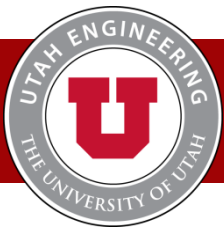
# Utah's Tech Sector\*

- *Fastest-growing in the country in 2020*
- *Highest growth rate in the next decade*
- *Highly software-dependent*
- *8,197 Tech Businesses*
- *9.6% of Total Employment*
- *11.5% of Economy*
- *152,687 Net Tech Employment*
- *35,035 Employer Job Postings*
- *\$20B Economic Impact*

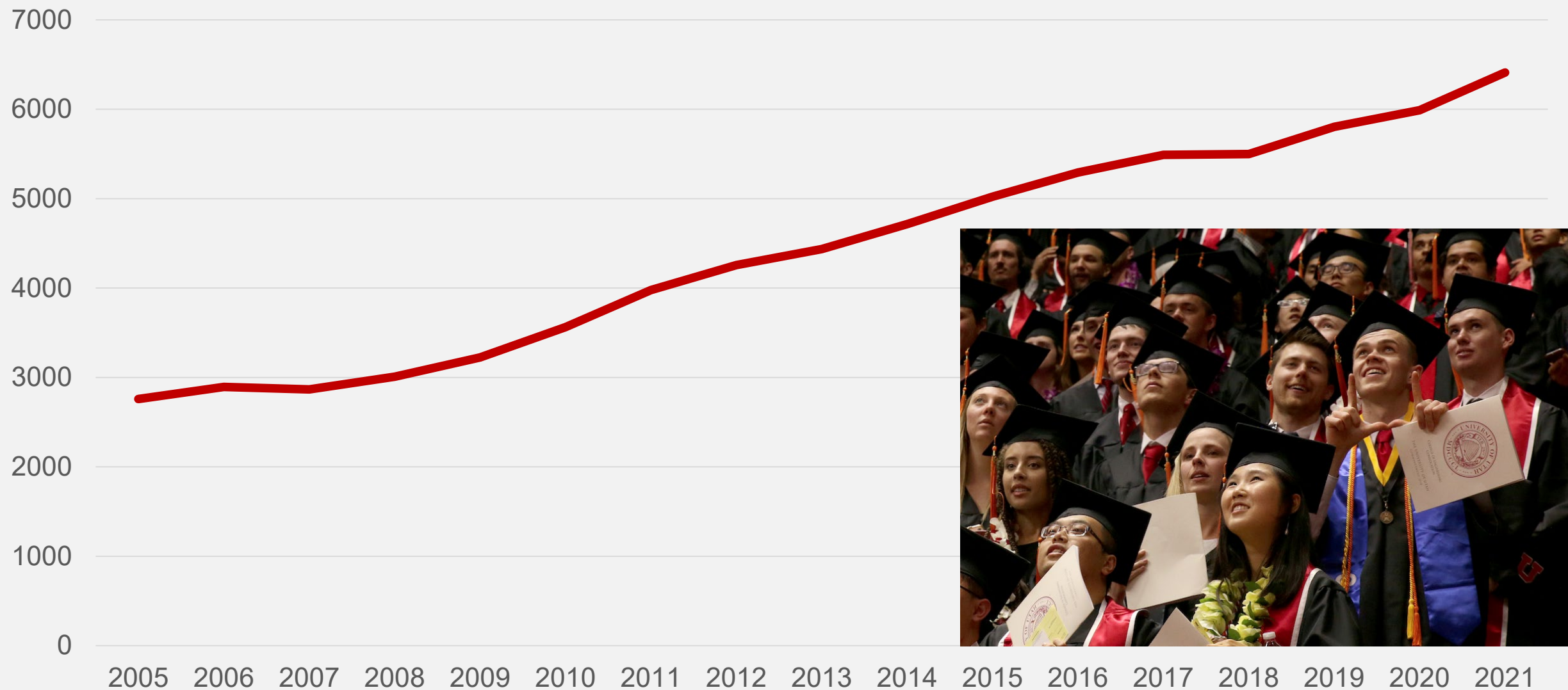
\* Source: Computing Industry Technology Association  
Cyberstates 2021 Report

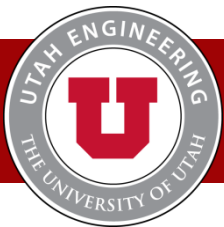






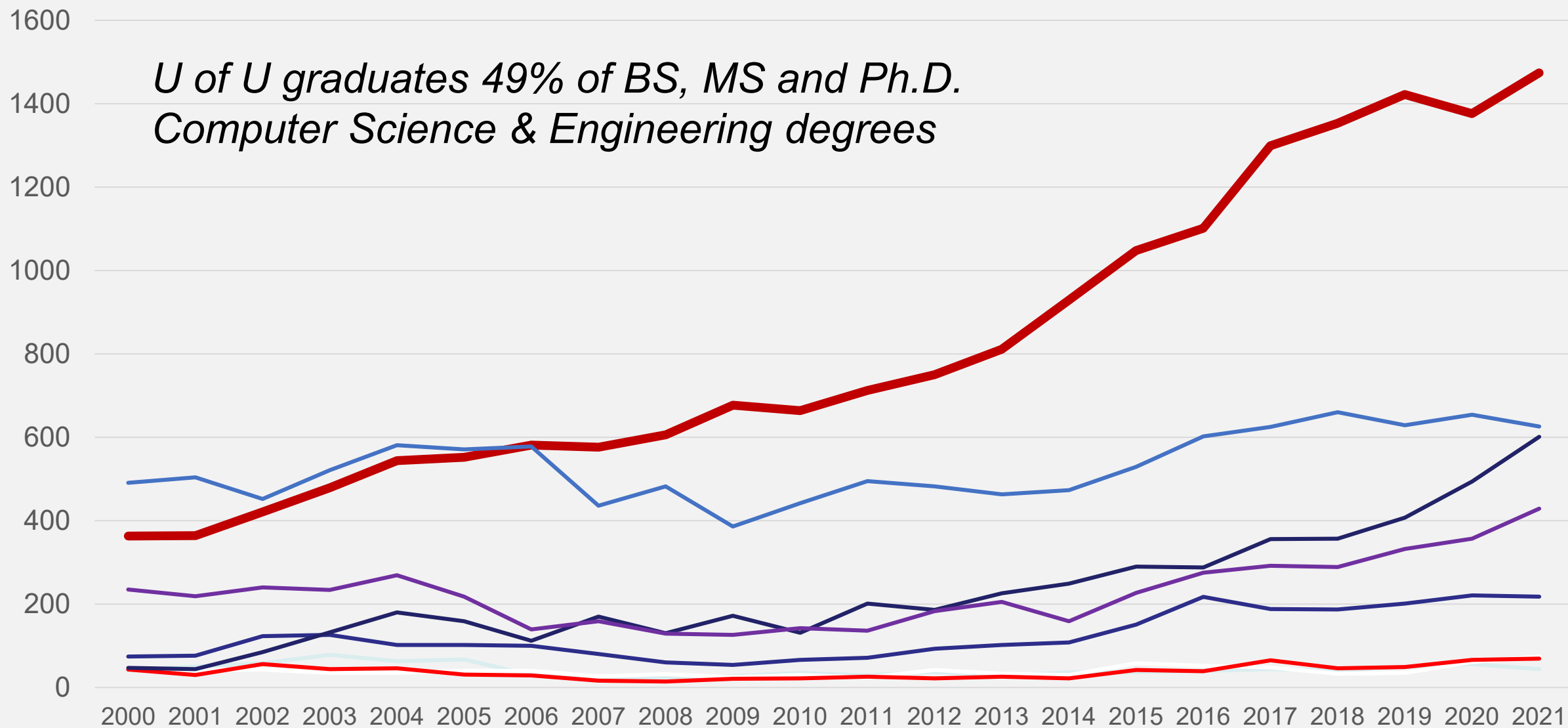
# *U of U College of Engineering Enrollment*

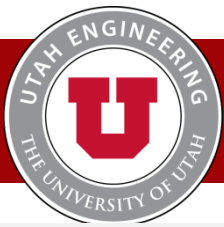




# USHE CS & Engineering Graduates

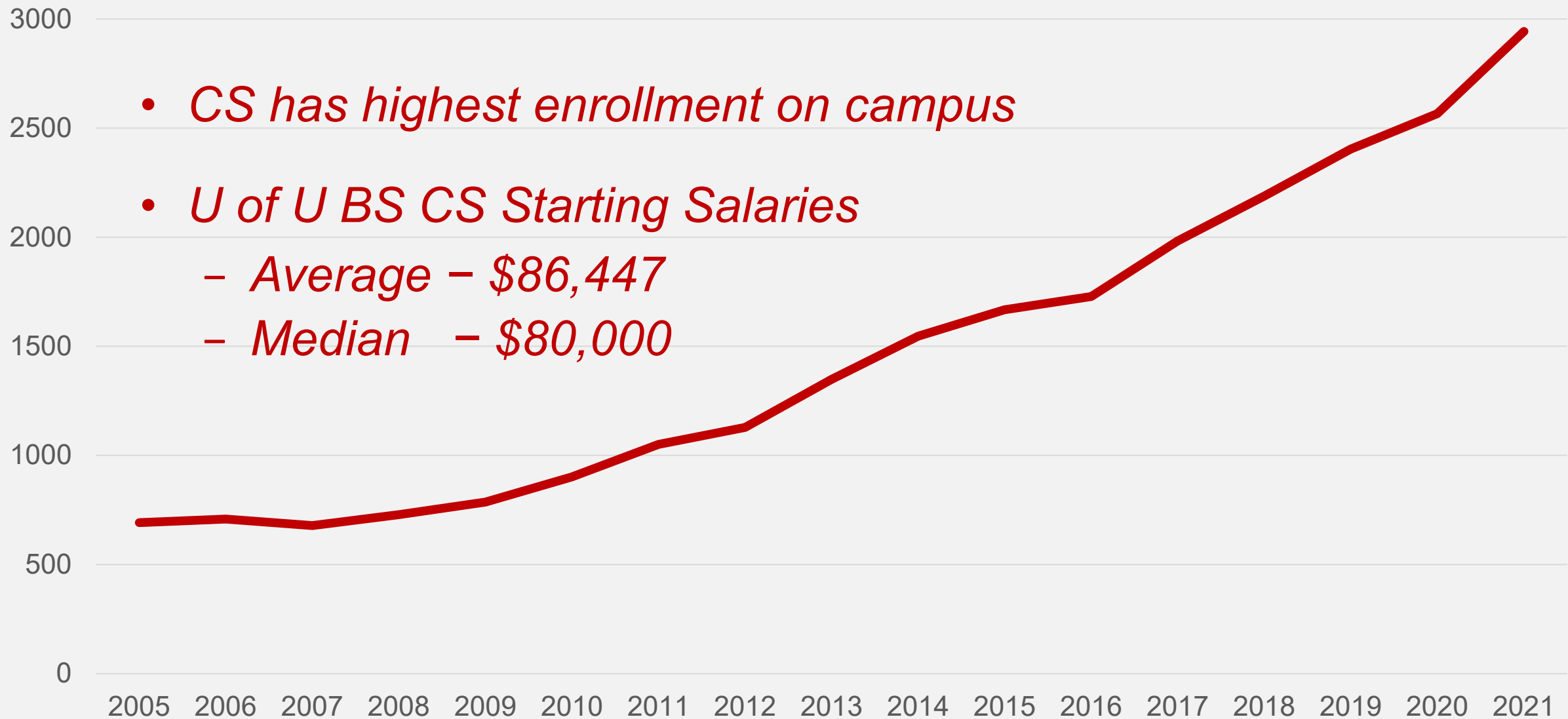
*U of U graduates 49% of BS, MS and Ph.D.  
Computer Science & Engineering degrees*





# *U of U Computing Enrollment*

- *CS has highest enrollment on campus*
- *U of U BS CS Starting Salaries*
  - *Average – \$86,447*
  - *Median – \$80,000*





# Workforce







# Capacity Exceeded

- *Introductory Programming Classes*
- *465 to 696 Students*
- *Standing Room Only*
- *Single Projector*
- *Single Blackboard*
- *Small Desks*
- *Poor Lighting*
- *No Group Work*

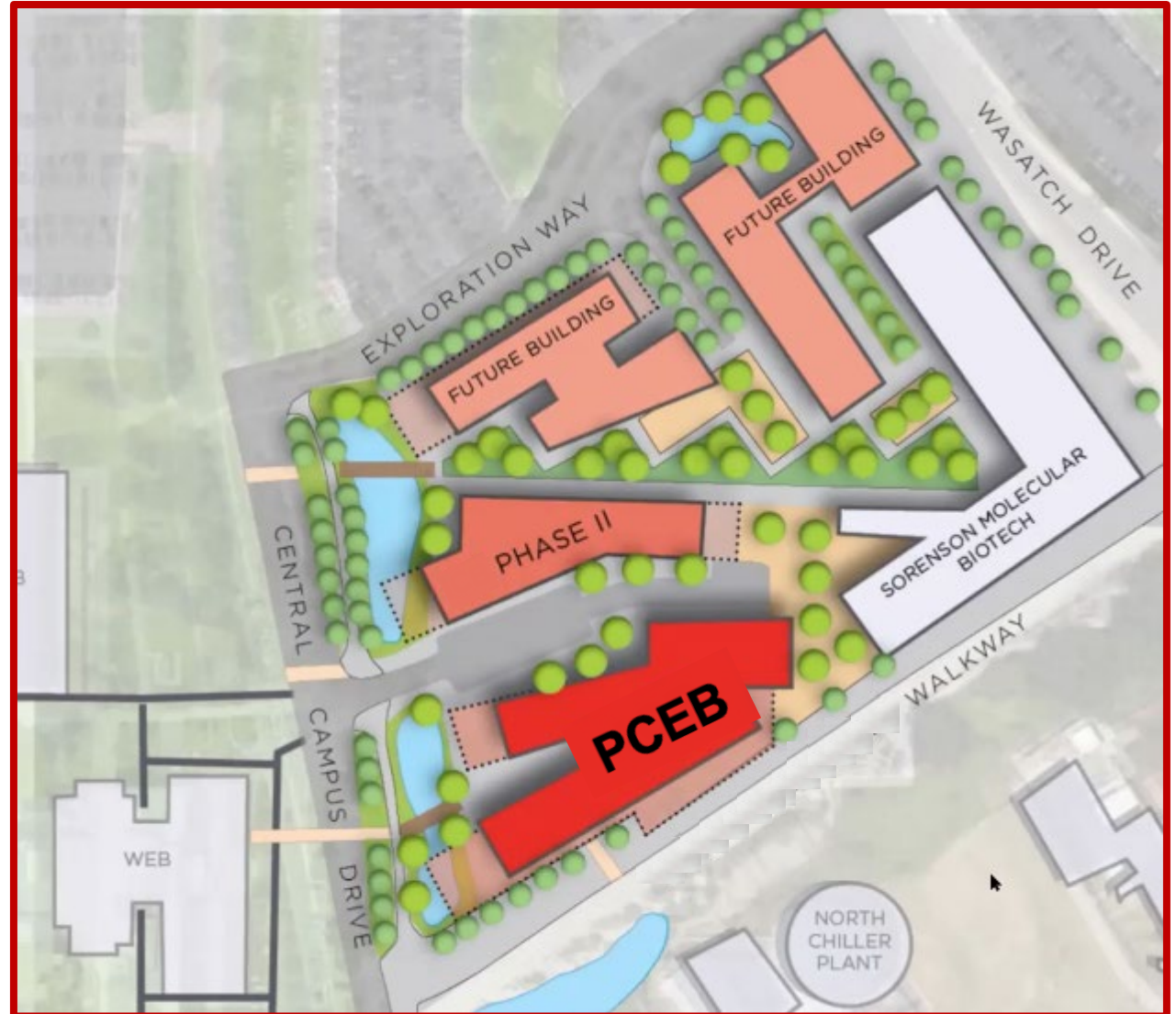






# Innovation Quad

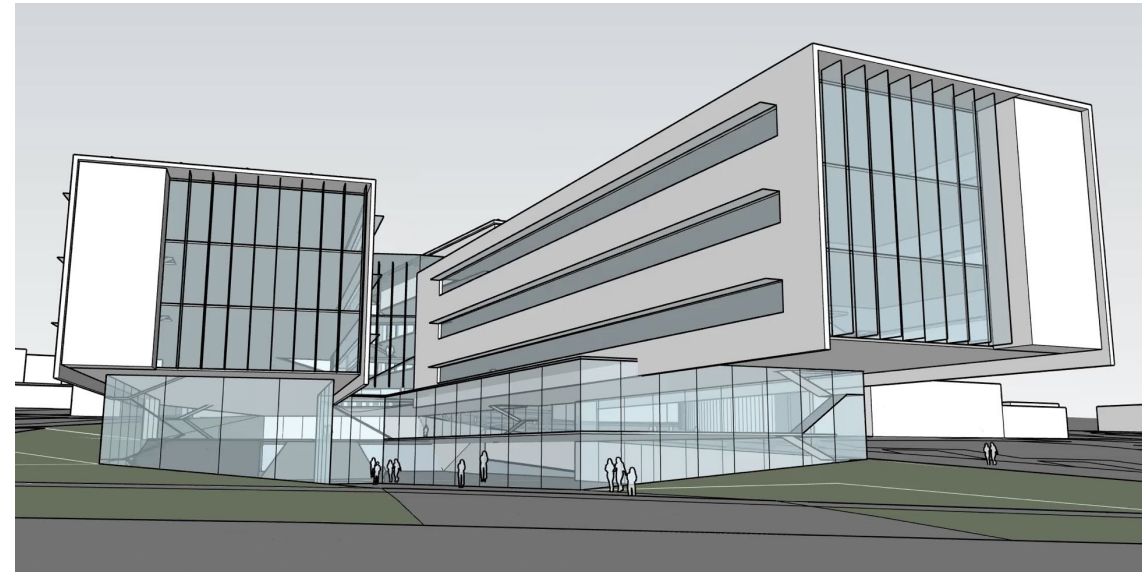
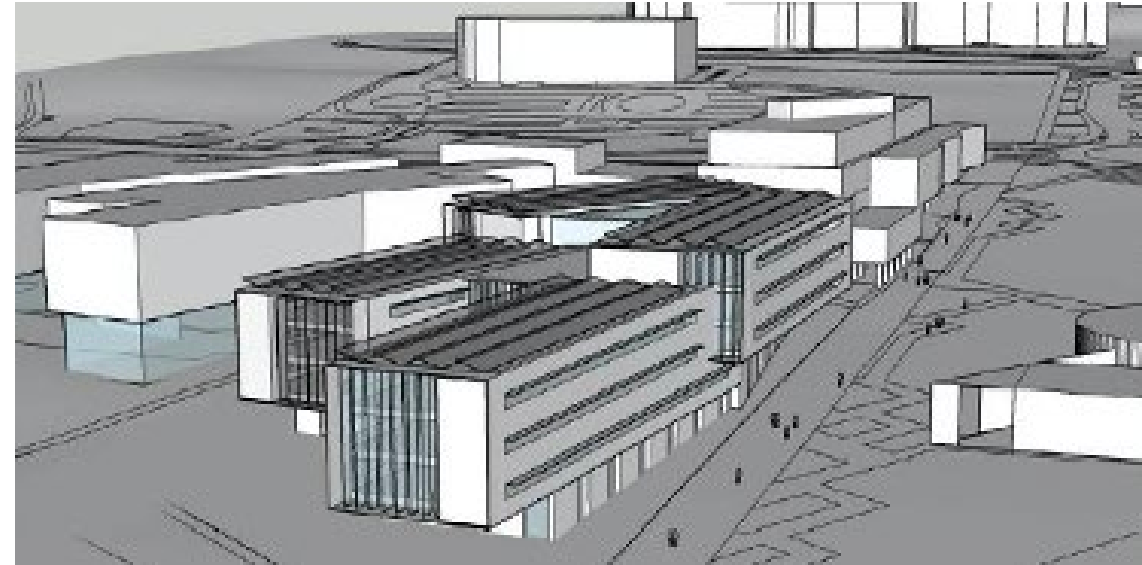
- *Occupants*
  - *School of Computing*
  - *Medical Informatics*
- *Interdisciplinary Initiatives*
  - *Cybersecurity Center*
  - *FinTech Center*
  - *Data Science Center*
- *Hub of Computational Excellence*





# Programming

- 209,000 GSF
- Six Floors
- 12 Classrooms
- 70,000 sq. ft. of Research Space
- 400-seat Auditorium
- Collaboration Space
- 15 Conference Rooms
- Event Space
- *Industry/National Lab Space*
- *SCIF*





# ***Cost and Affordability***

- *\$120,000,000 Total Cost*
  - *\$90,000,000 Requested from the State*
  - *30,000,000 Private Funding*
  - *1,800,000 O&M (annually)*
- *Lower Infrastructure Costs*
  - *\$50M in utility/capacity improvement in 2012*
- *Naming-Level Commitment*
  - *John and Marcia Price Foundation*
  - *\$15,000,000*
- *Other Commitments*
  - *\$4,000,000*

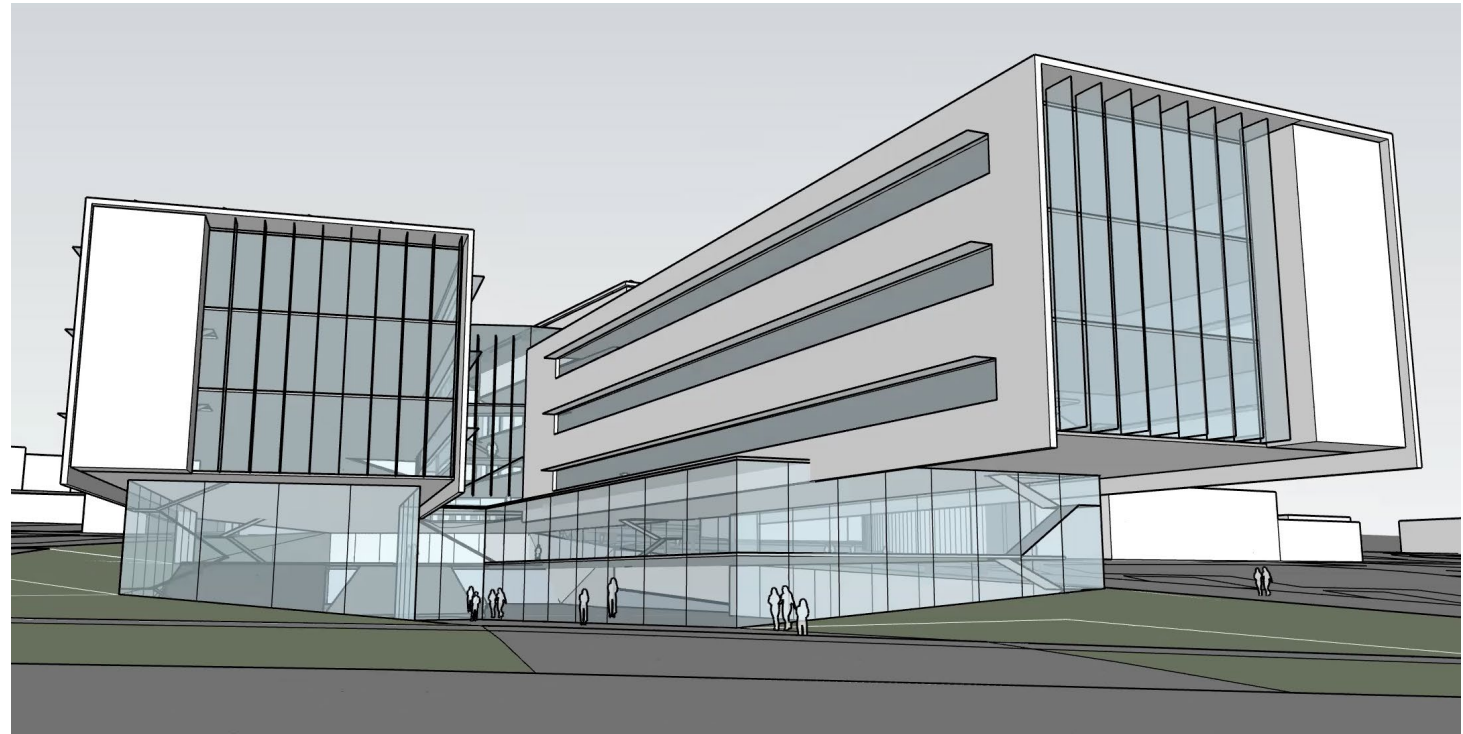


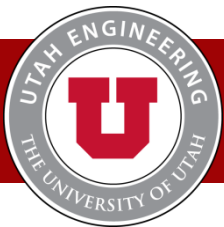




# *Return on Investment*

- *PCEB will accommodate 3,176 students when it opens in 2025*
- *Will enable CoE to grow graduates by 500 Graduates/yr*
- *Will double Computing Graduates at the U*
- *Will Increase USHE Computing Graduates by 50%*





# Utah Industry Support

<i>Abstrax Inc</i>	<i>Causality Link</i>	<i>Finicity, Mastercard</i>	<i>Northrop Grummon</i>	<i>syberjet</i>
<i>Adobe</i>	<i>Chevron</i>	<i>Galaxy</i>	<i>NVIDIA</i>	<i>Tetrad</i>
<i>Autoliv</i>	<i>Control 4</i>	<i>Gremlin</i>	<i>Okland</i>	<i>Texas Instruments</i>
<i>Avantor</i>	<i>Core Brace</i>	<i>Health Equity</i>	<i>Pando Ventures</i>	<i>Thermo King</i>
<i>BAE Systems</i>	<i>CRS</i>	<i>Horrocks</i>	<i>Pelion Venture Part.</i>	<i>Trask Brit</i>
<i>Berkadia</i>	<i>Degreed</i>	<i>Job Industrial Serv.</i>	<i>Powerschool</i>	<i>Tula Health Inc</i>
<i>BHB Engineers</i>	<i>Delicious AI</i>	<i>Kimley Horn</i>	<i>Progressive Lending</i>	<i>Union Wireless</i>
<i>Blackrock Micro</i>	<i>Divvy</i>	<i>L3Harris</i>	<i>Psomas</i>	<i>US Synthetic</i>
<i>BlockOps</i>	<i>Dominion</i>	<i>Layton Construction</i>	<i>Qualtrics</i>	<i>Vivint</i>
<i>Boeing</i>	<i>e-sens</i>	<i>Lightening Prot. Sys.</i>	<i>RLWadsworth Const.</i>	<i>wFluidx</i>
<i>Bright Path Labs</i>	<i>Entrata</i>	<i>Lucid</i>	<i>RapidSilicon</i>	<i>Whistic</i>
<i>BUKU</i>	<i>Enzy</i>	<i>Merit Medical Inc</i>	<i>Rocky Mnt. Power</i>	<i>Wright Engineers</i>
<i>Cao Group</i>	<i>Espira</i>	<i>Microsoft</i>	<i>Silicon Slopes</i>	<i>Zions Bankcorp</i>
<i>Carterra</i>	<i>FatPipe</i>	<i>Microsurgical Innov.</i>	<i>Stryker Neurovascular</i>	