

# EXCESSIVE SPEED

ON UTAH'S ROADWAYS  
MAY 18, 2022



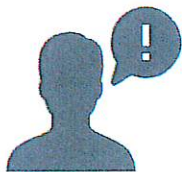
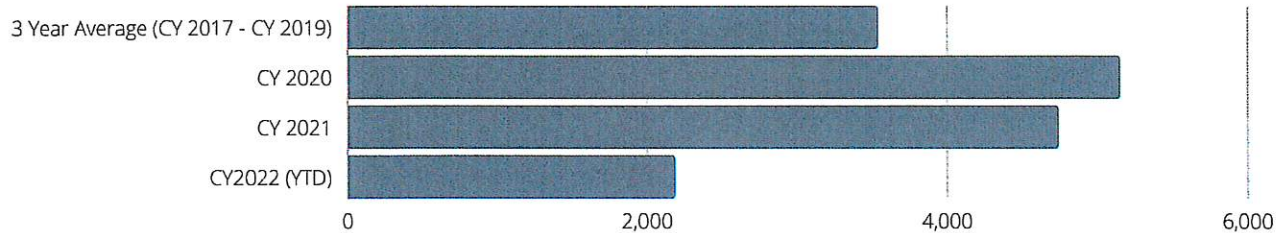
DEPARTMENT OF PUBLIC SAFETY  
**UTAH HIGHWAY PATROL**

## IMPACT STATEMENT

The Utah Highway Patrol (UHP) strives to maintain safety of life and property on Utah's roadways. The UHP handled 3,648 speed-related crashes in 2020, representing 24% of all crashes handled by the Department. Current projections show the UHP handled approximately 4,568 speed-related crashes in 2021, 26% of the crash totals. In recent years, this has become increasingly challenging due to rising numbers of excessive speeds and speed-related crashes.

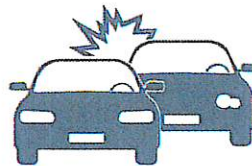
The three year average of 100+ MPH citations issued per year by the UHP from 2017-2019 was 3,532 speeding citations. The number of 100+ MPH citations issued in 2020 and 2021 rose to 5,136 and 4,729 respectively, or an average of 4,933 per year. The two averages show a nearly 40% (39.6) increase in 100+MPH citations issued from the three year average of 2017-19 to the two year average of 2020-21. Current to date in CY2022 UHP Troopers have cited 2,178 drivers in excess of 100 MPH.

### 100+ MPH Citations Issued



**1,050**  
Citizen Complaints  
Received

DPS Salt Lake Communications Center received 1,050 citizen complaints in 2021 related to 100 MPH speed violations.



**79**  
Speed Related  
Crashes

**85**  
Speed Related  
Fatalities

Statewide there were 79 speed-related fatal crashes and 85 fatalities reported in 2020-21. However, Highway Safety has not finished compiling the 2021 fatal figures and that number is expected to grow.

## SPEEDING & RECKLESS DRIVING

Effective May 4, 2022, SB53 increased speeding at 105 MPH to the violation of Reckless Driving, a Class B Misdemeanor. To date in 2022, UHP Troopers have issued **911 citations for speeds in excess of 105 MPH**, and 293 citations for Reckless Driving. Since the May 4th implementation of the Reckless Driving enhancement, UHP Troopers have issued 33 citations for Reckless Driving and **22 citations for Reckless Driving in excess of 105 MPH**.