

Assessing Utah's Behavioral Health System



UHA's Behavioral Health Committee



Utah Behavioral Health Assessment & Master Plan

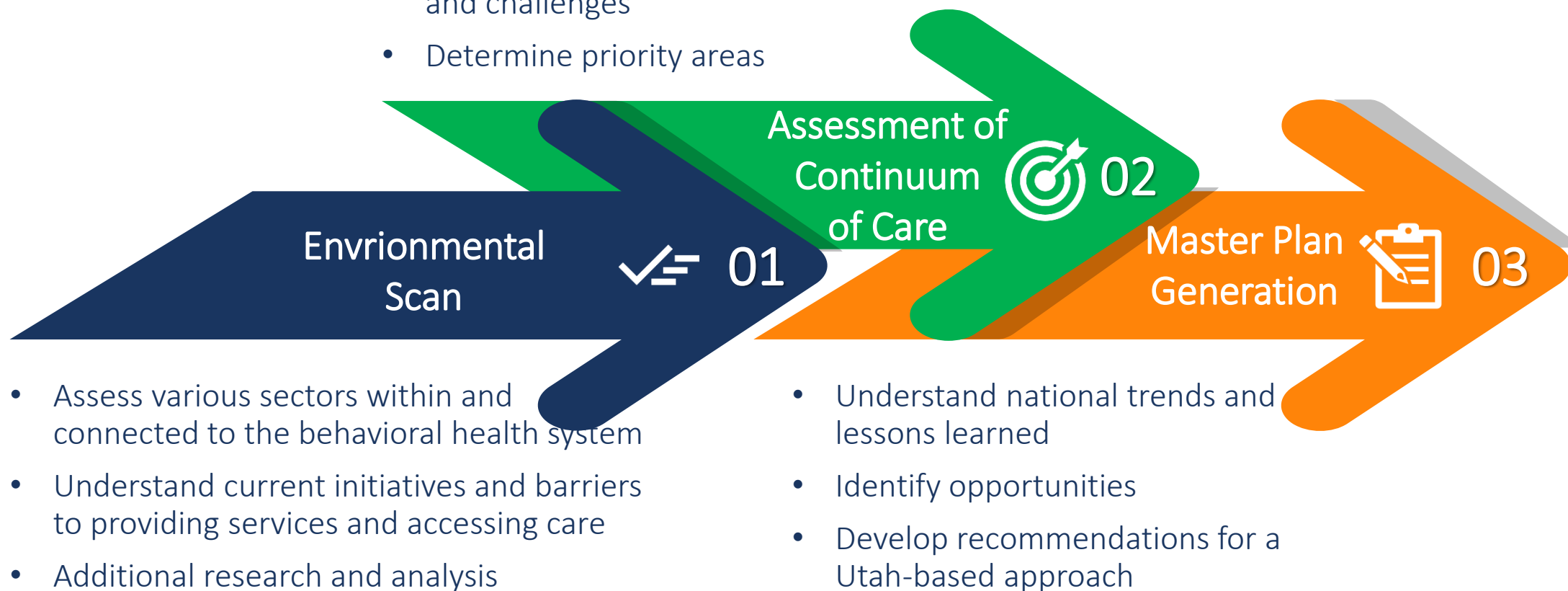
A COLLABORATION OF:

KEM C. GARDNER POLICY INSTITUTE
HEALTH MANAGEMENT ASSOCIATES
LEAVITT PARTNERS STRATEGY



Project Phases

- Assess the current system and continuum of care
- Understand regional variation, gaps, and challenges
- Determine priority areas





Introductions

Leavitt Partners

Founded by Mike Leavitt after he served as secretary of the U.S. Department of Health & Human Services from 2005 to 2009. Seeking to bring clarity and value to a rapidly changing U.S. health care system, he created a health care intelligence gathering and filtering process modeled after what was used in the national intelligence service to advise presidential decision making.

Leavitt Partners, now an HMA Company, has been at the forefront of navigating change in healthcare for over a decade, giving clients a holistic view of the economic, market, delivery system, public policy, and political influences impacting the industry. A leader in the value-based care movement, Leavitt Partners is also a respected convener, leading collaborative alliances in pursuit of solutions to complex health policy problems.

Health Management Associates



An independent, national research and consulting firm specializing in publicly funded healthcare and human services policy, programs, financing, and evaluation.

A team of more than 500 experts with vast experience in every facet of the healthcare system.

Through skilled analysis, guidance and technical know-how, our consultants help a wide range of clients successfully navigate the healthcare space.



■ HMA'S BEHAVIORAL HEALTH TEAM

Overview:

- + HMA has **over 60 individuals** who work in the behavioral health landscape nationally spanning mental health, substance use, public health and health promotion and prevention
- + Consultants come directly from public service within behavioral health including:
 - + Previous State MH or SUD Commissioners;
 - + State BH Medicaid policy makers;
 - + Public health leaders;
 - + City and County BH Directors;
 - + CEO, COOs and clinical leadership within Provider organizations;
 - + Clinical and operational roles within integrated delivery systems;
 - + Leadership of provider associations;
 - + Federal leadership such as Health Information Exchange; and more.

Sample Areas of Work:

- + HMA has worked with **numerous states on significant behavioral health reform efforts**. Current work includes behavioral health structure redesign, Medicaid Waiver design and implementation, payment reform, implementation of crisis 998 initiatives, co-responder models and provider transformation among other projects. States where the BH team is currently working include:
 - + RI, CO, DE, AL, IN, MT, NY, CA, AZ, and others
 - + HMA was written into multiple states Centers for Medicaid and Medicare Services Planning crisis grants and is supporting DE, MD, IN, and OK with other states on the horizon.