



Performance Measures

Utah State Board of Education
August 16, 2022

Reciprocal Performance Framework

Statewide
Outcomes
and
Indicators

System
Opportunity
Indicators

USBE Capacity and Support

USBE Role in
Creating
Essential
Conditions
for Ensuring
Opportunity

USBE
Agency
effective-
ness and
efficiency

LEA role in creating
essential conditions
for ensuring
opportunity

LEA effectiveness
and and efficiency
measures

Aggregate
performance of
schools

Local Capacity and Support

School Quality

School role in
meeting student
needs

School role in
enabling student
success



Reciprocal Performance Framework

SOLUTIONS

- Aligns efforts to outputs and outcomes across K-12
- Clearly develops KPI's to address USBE/LEA operational outcomes
- Demonstrates alignment with existing responsibilities across communities in K-12
- Creates Coherence





Timeline for Actions

Fall 2022

- Utah School Accountability Redesign Capstone Report

Winter 2022

- Reports and Requirements Taskforce Initial Recommendations

Spring 2022

- Utah State Board of Education Strategic Plan Review and Potential Revision

General
Session 2023

- Draft Agency Performance Measures for PEA Consideration





Thank You

Sarah Young
Chief of Staff


sarah.young@schools.utah.gov

Utah State Board of Education



Appendix



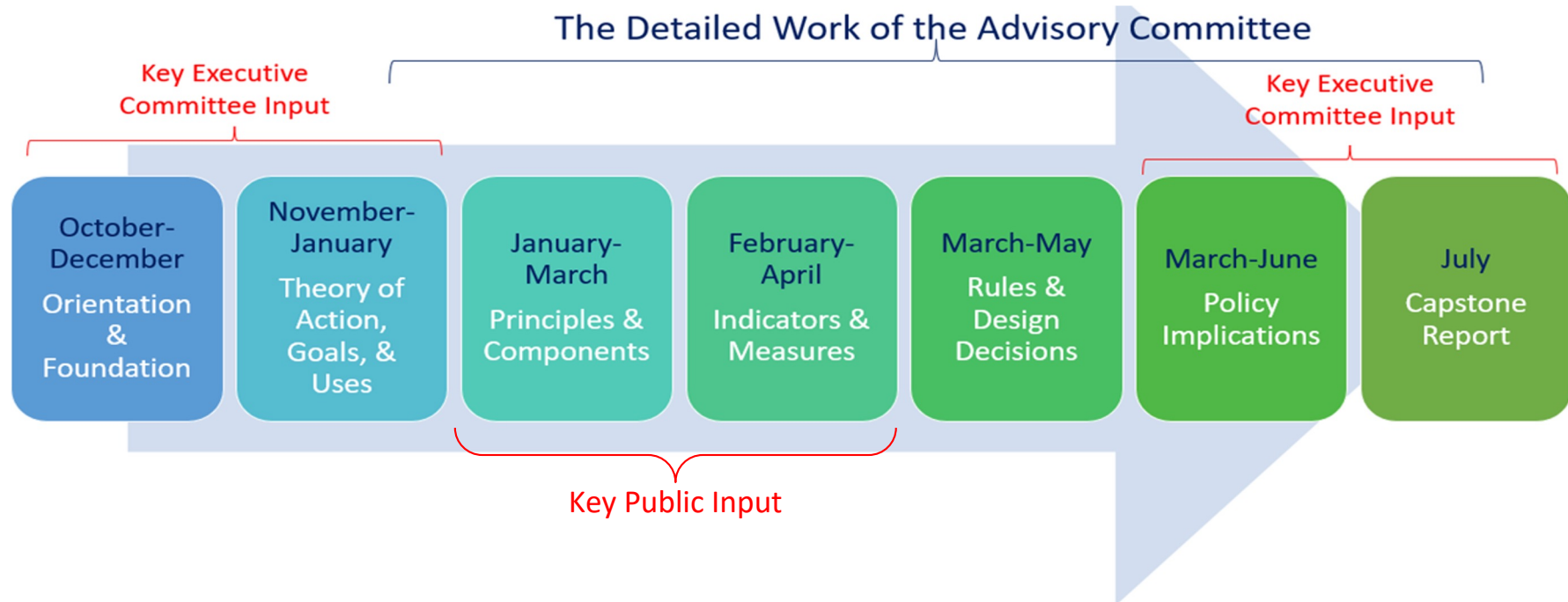


Performance Reporting and Efficiency Requirements (*H.B. 326, 2021*)

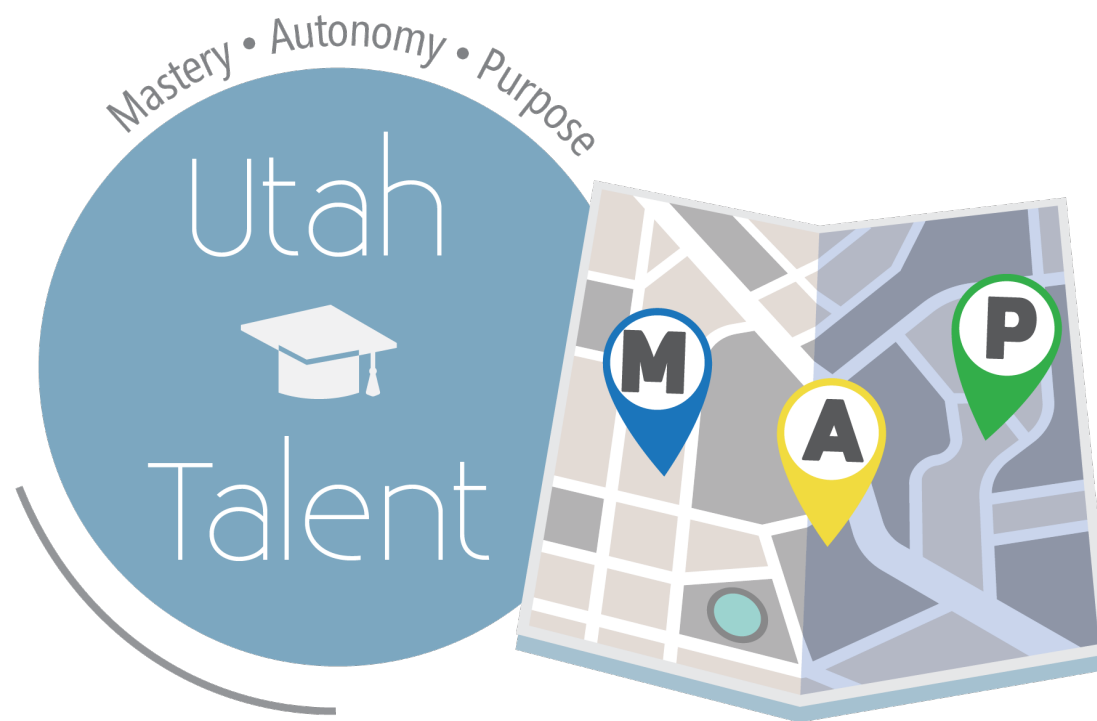
- Formalized and expanded existing performance measurement practices for programs and projects receiving Utah taxpayer dollars
 - Including requiring measurement of any programs receiving new funding of \$10,000 or greater
- These performance data help both the executive and legislative branches understand the work of taxpayer-funded programs and their impact



Work Trajectory



Portrait of a Graduate



Utah State Board of Education





OUR VISION

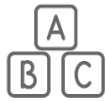
Upon completion, all Utah students are prepared to succeed and lead by having the knowledge and skills to learn, engage civically, and lead meaningful lives.

MISSION

The Utah State Board of Education leads by creating equitable conditions for student success: advocating for necessary resources, developing policy, and providing effective oversight and support.



GOALS



Early Learning



Personalized
Teaching & Learning



Safe & Healthy
Schools



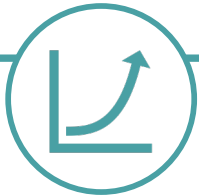
Effective Educators
& Leaders



Existing USBE Performance Measures

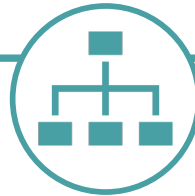
Education Elevated

Measures progress of the system to our vision



Strategic Plan Goals & Strategies

Measures progress of the USBE strategic plan



Line Item Measures

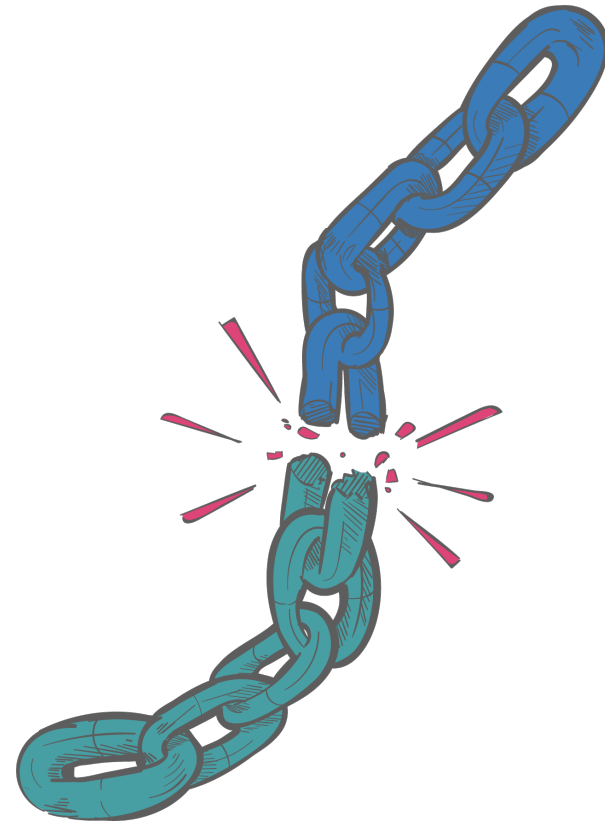
Measures progress for specific budget line item



Existing USBE Performance Measures

Current Challenges

- ➡ Utilizing Inputs, Activities, Outputs, and Outcomes
- ➡ Unclear Connection with USBE Administrative Functions and Operational Outcomes
- ➡ Role of LEAs is Unclear
- ➡ Lacks Coherence



Proposed: Reciprocal Performance Framework

Statewide
Outcomes
and
Indicators

System
Opportunity
Indicators

USBE Capacity and Support

Local Capacity and Support

School Quality





Reciprocal Performance Framework

Statewide Outcomes and Indicators

- Graduation
- Proficiency in core academic subjects (grades 3-8)
- Proficient in literacy and numeracy in grades 1 - 3
- Student readiness for kindergarten
- Readiness coursework completion
- ACT
- **Student engagement**
- **Teacher engagement**





Reciprocal Performance Framework

System Opportunity Indicators

Access/opportunity by socio-economic status, special education, other characteristics

- ➡ Student outcome measures disaggregated by student group
- ➡ Course selection and enrollment patterns by student group

Essential conditions for ensuring opportunity

- ➡ Funding: Equitable distribution of resources across LEAs
- ➡ Educators: Reasonably equal access to experienced, qualified, effective educators across LEAs
- ➡ Content: High-quality competencies aligned to workforce needs



Reciprocal Performance Framework

Statewide
Outcomes
and
Indicators

System
Opportunity
Indicators

USBE Capacity and Support

Local Capacity and Support

School Quality





Reciprocal Performance Framework

USBE Capacity and Support

USBE role in creating essential conditions for ensuring opportunity

- Funding: Efficient and effective administration of federal & state grants
- Educators: Measuring quality for teacher licensing, endorsement, educator preparation programs, educator evaluation standards

USBE Agency Effectiveness and Efficiency

- Key Performance Indicators (KPIs) on Operational Outcomes
- Key Performance Indicators on Strategic Goals and Indicators





Local Capacity and Support

LEA role in creating essential conditions for ensuring opportunity

- ➡ Funding: Equitable distribution of resources across schools
- ➡ Educators: Reasonably equal access to experienced, qualified, effective educators across schools within the district

LEA effectiveness and efficiency measures

- ➡ Key Performance Indicators on Operational Outcomes
- ➡ Key Performance Indicators on Strategic Goals and Strategies

Aggregate performance of schools aligning with school accountability





School Quality

School role in meeting student needs

- ➡ Student engagement
- ➡ School climate experiences

School role in enabling student success

- ➡ Student Growth and Achievement Outcomes
- ➡ Student Demonstration of Competency including Portrait of a Graduate

