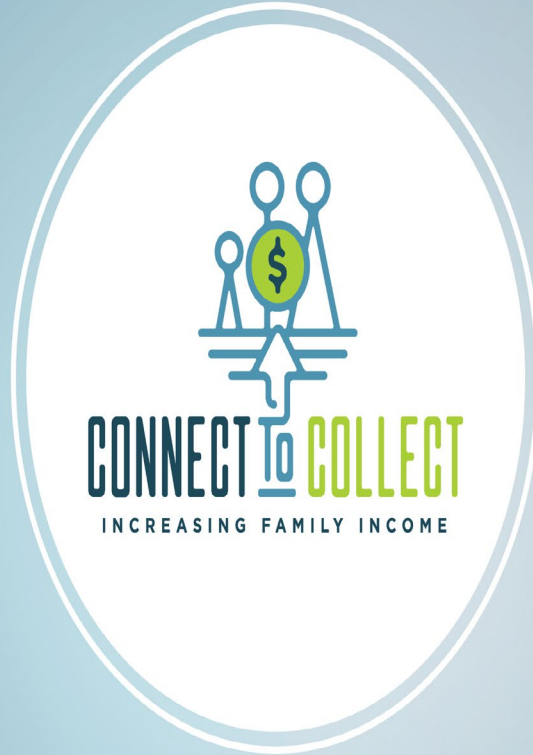


Increasing Financial Resources for Utah Families

September 21, 2022



Our Team and Funders

Team

Lori Kowaleski-Jones

Norman Waitzman

Cathleen Zick

Greg McDonald

Ann House

Maren Curtis

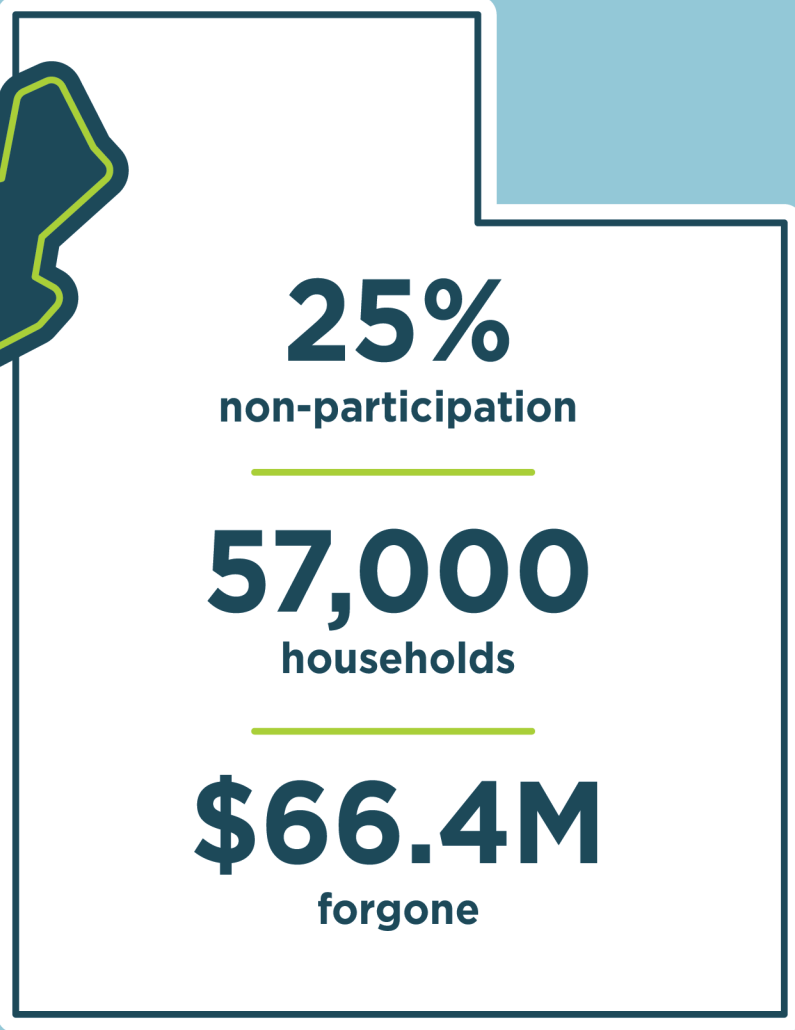
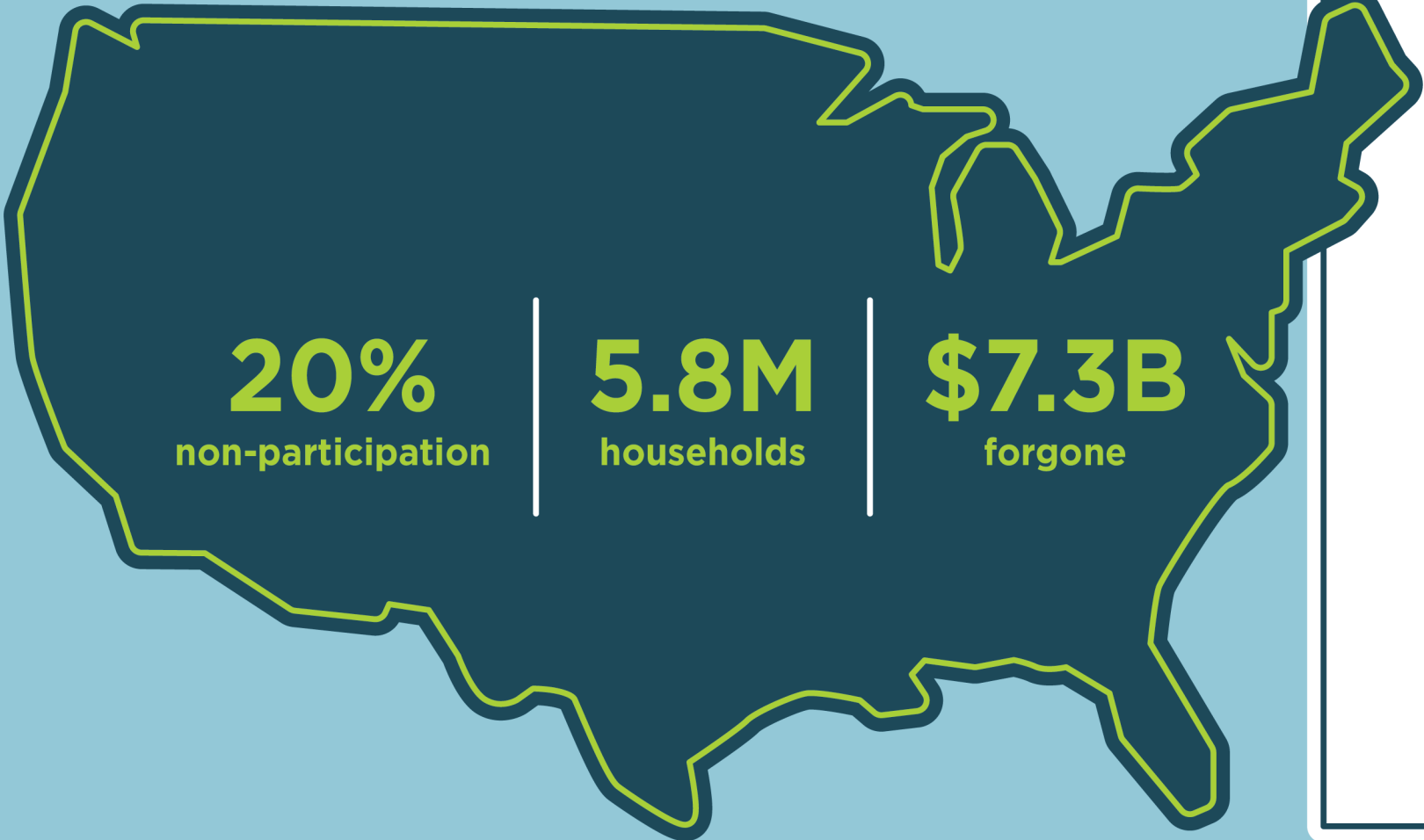
Viridiana Najera

Funding Shout out

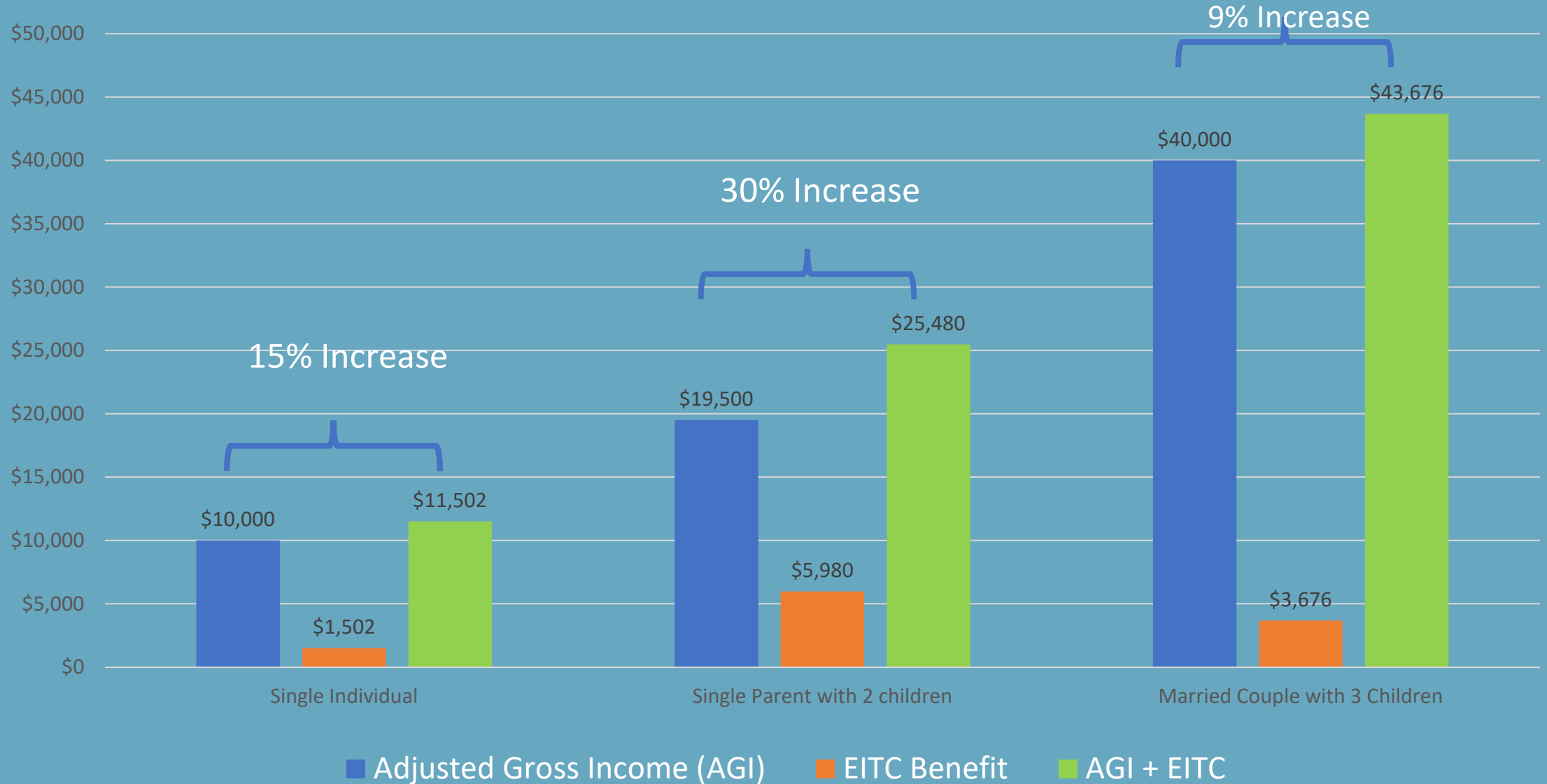
- Noorda Foundation
- Schmidt Futures/American Dream Challenge



EARNED INCOME TAX CREDIT (EITC)



EXAMPLES OF WHAT THESE HOUSEHOLDS ARE FORGOING



Why EITC?



For children, the benefit of the EITC includes improvements in:

- child health
- K-12 school achievement
- intergenerational social and economic mobility



For parents, the benefit of the EITC include increases in:

- employment
- earnings from work
- retirement security in later years, especially for single mothers

How much of a difference does the EITC make for a family?

Average amount per tax filer in 2017⁴

\$2,488

THIS COULD PAY FOR



Almost

\$50

of healthy groceries every week



\$200

a month to apply across transportation, utilities, or childcare



Security deposit on an apartment

Potential
Federal
EITC
impact

The Connect to Collect Approach

Trust

Community Partners

- disseminate flyers
- encourage individuals to follow-up



Build Awareness

Connect to Collect

- EITC benefit calculator link*
- C2C hotline phone number*
- Link to website with information about the nearest VITA site



Access Benefits

VITA

- individuals schedule an appointment
- individuals call the C2C hotline* if they have questions about VITA

*Resources are in English and Spanish.

A woman with short, wavy brown hair and large, white and gold tassel earrings is speaking. She is wearing a black top. The background is a reddish-brown wall with two framed pictures and a large green plant with white flowers.

¡Eso es aproximadamente 66 millones de dólares de dinero no reclamado

Connect to Collect Community Partners



EITC Eligibility Survey Link

To begin with, we need some basic information about you.

Para empezar, necesitamos unos informaciones basicas sobre usted.

Do you have a Social Security Number?*We do not need to know what your social security number is, we only need to know whether you have one, yes or no.

¿Tiene usted un número de seguridad social?

*No necesitamos saber cual es su número de seguridad social, solo necesitamos saber si lo tiene, sí o no.

- Yes **Sí**
 No **No**
 Refused to Answer [Negarse a responder](#)

[reset](#)

Do you have any child dependents?

Tiene usted niños dependientes?

- No Qualifying Children
 One Child
 Two Children
 3 or More Children

[reset](#)

Do not modify

* must provide value

What is your filing status for 2021?

¿Que es su estado civil por 2021?

- Single, Head of Household, or married filing separately [Casados que presentan una declaración conjunta](#) o [El/La cabeza de familia](#)
 Married Filing Jointly [Soltera](#)

Based on your filing status, what was your approximate earned income in 2021?

32000

*If you are married filing jointly, please list your joint earned income.

¿Basado en su estado civil, qué fue su ingreso aproximados por 2021?

*Si usted y su esposa/o estan casados que presentan una declaración conjunta por favor decir su ingresos combinados.

Do not modify

* must provide value

Your estimated EITC benefit is:

3359.2

Do not modify

You may identify a Volunteer Income Tax Assistance (VITA) site where you can make an appointment to get free tax filing assistance by [clicking here for VITA sites](#)

Focus on Schools

- Key pivot for this tax year
 - Canyons; Salt Lake City; Granite; Jordan and Murray
 - Focus on granite
- Focus on targeted schools with diverse outreach mechanisms
- Estimated touch points ~75,000 to 100,000 households.

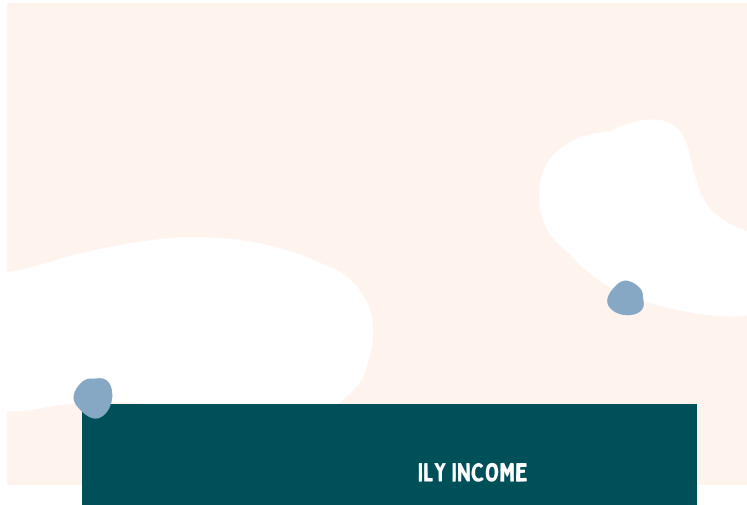
SALT LAKE COUNTY SCHOOL DISTRICT BOUNDARIES



Legacy of the Connect to Collect Intervention

- Last tax year for our program
- Better data is needed for understand paper returns & EITC receipt.
 - Utah files approx 150k paper returns each year. As paper returns don't automatically collect EITC, how many miss it?
- Schools could be an effective ongoing EITC outreach arm beyond our program project period but would take a partnership.

QUESTIONS?



EITC Eligibility

- Show proof of earned income
- Have a valid Social Security number

Partnership

- Email:
- *Lori Kowaleski-Jones at lk2700@fcs.Utah.edu*
- *Greg McDonald at greg@taxhelp.ut.org*
- Call the Connect to Collect Hotline: 385-465-5172
- <https://c2c.Utah.edu>
- Eitc Eligibility Screener (utah.edu)