

September 21, 2022

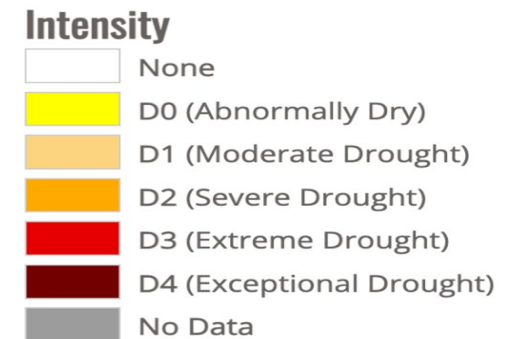
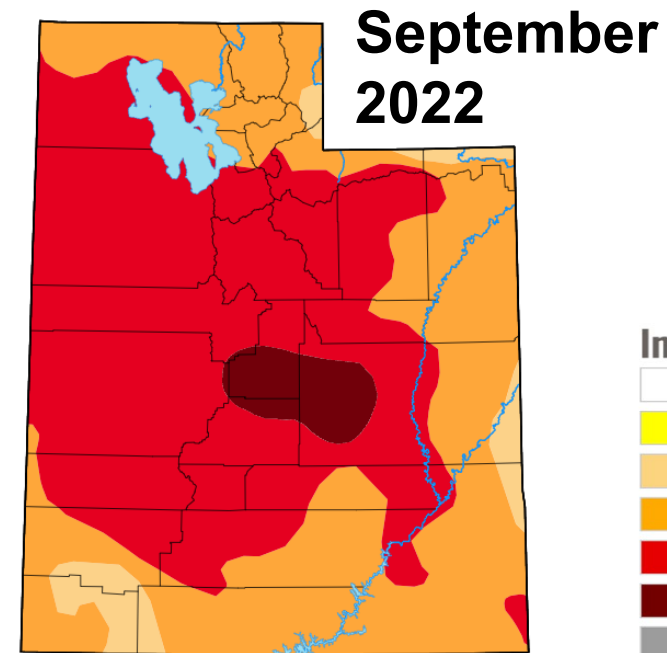
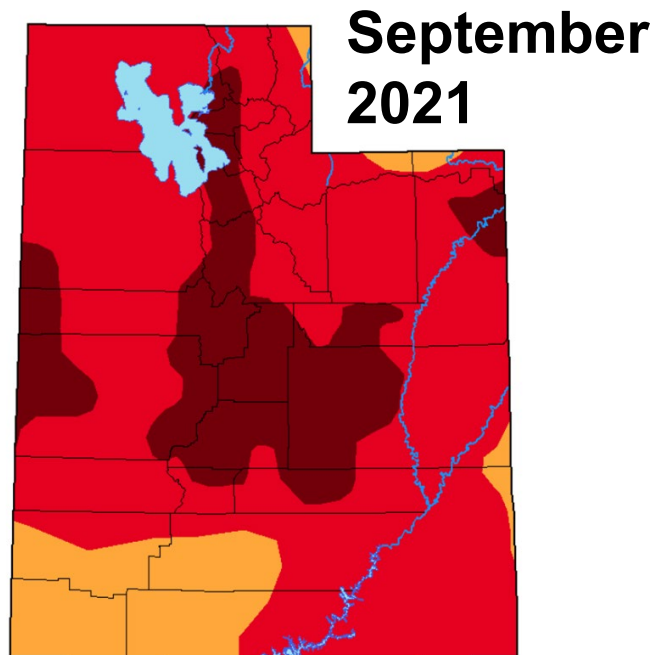
Natural Resources, Agriculture, and Environment Interim Committee

# 2022 Water Year Overview



Joel Ferry | Acting Executive Director

# U.S. Drought Monitor Map



88% in “Extreme” and 21% in “Exceptional”  
*“Exceptional” drought is the worst category of drought*

57% in “Extreme” and 3.6% in “Exceptional”

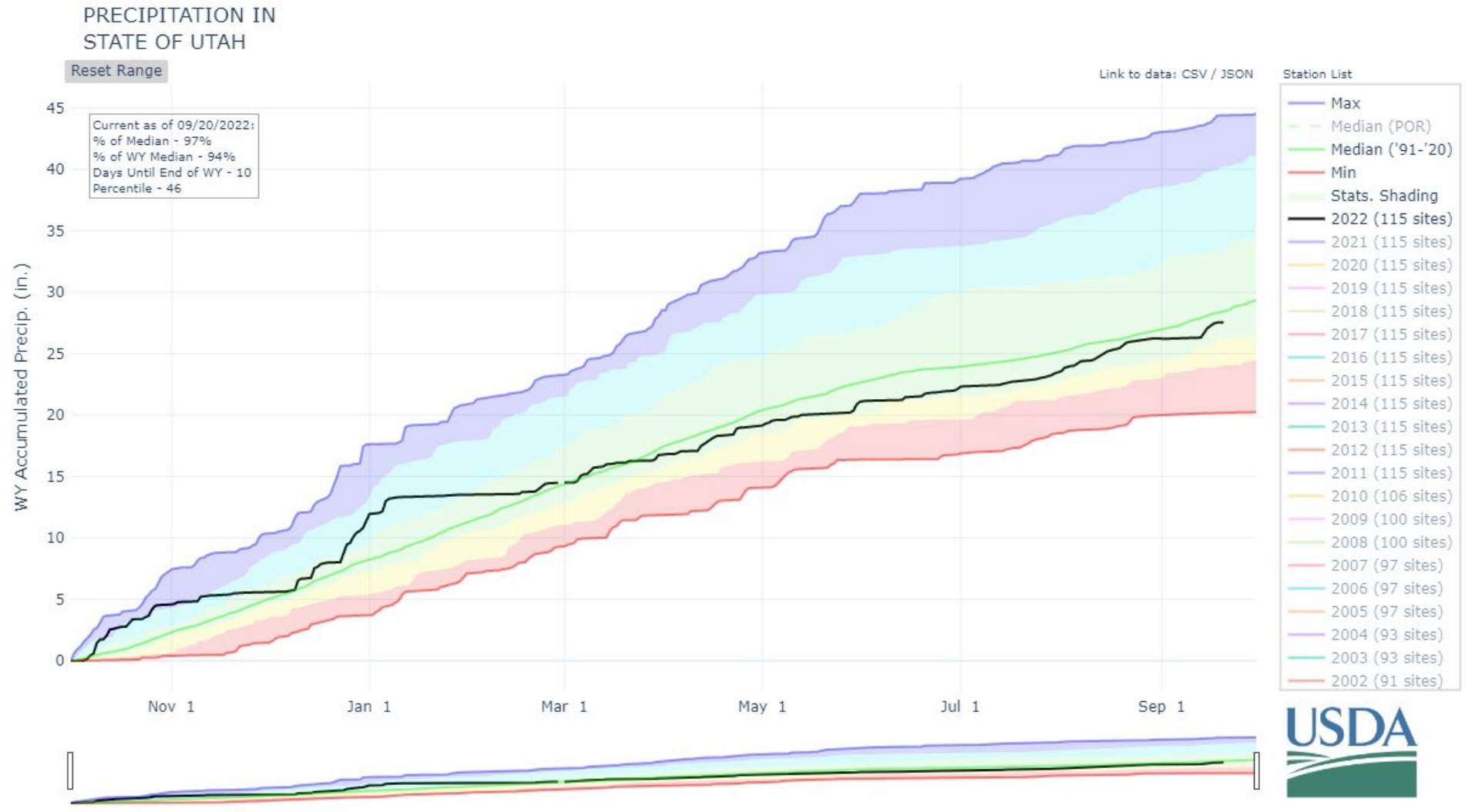
# Current Conditions (as of 9-21-22)

- 35 of Utah's 47 reservoirs are below 55% of available capacity (about the same as last year but 12% lower than normal)
- 33% of streams are flowing **below or much below** normal
- Water conservation is a top priority
- Prolonged drought is impacting the natural system



# Precipitation

- Just below normal
- Monsoons have helped soil moisture and vegetation but don't refill reservoirs

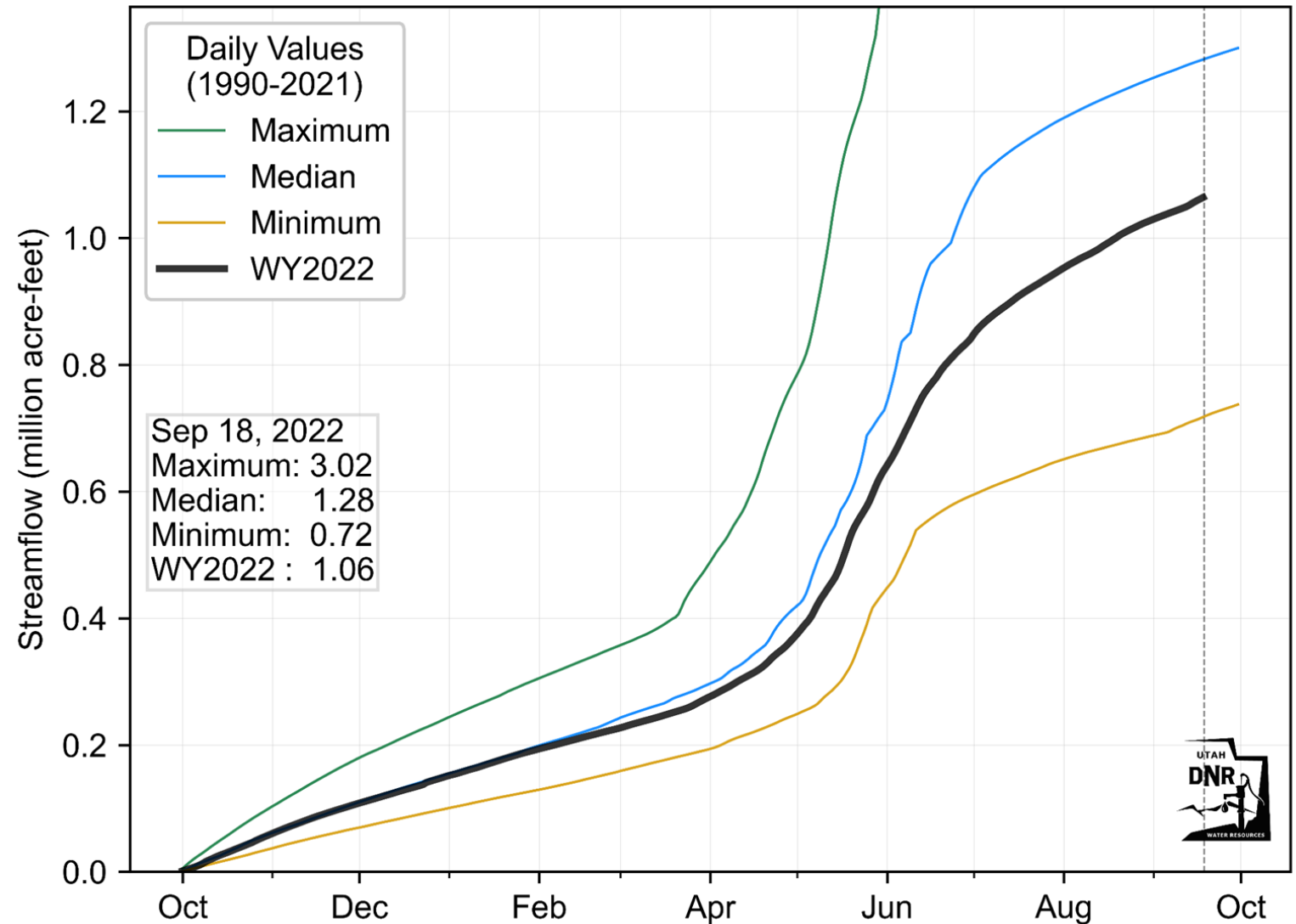


# Streamflow

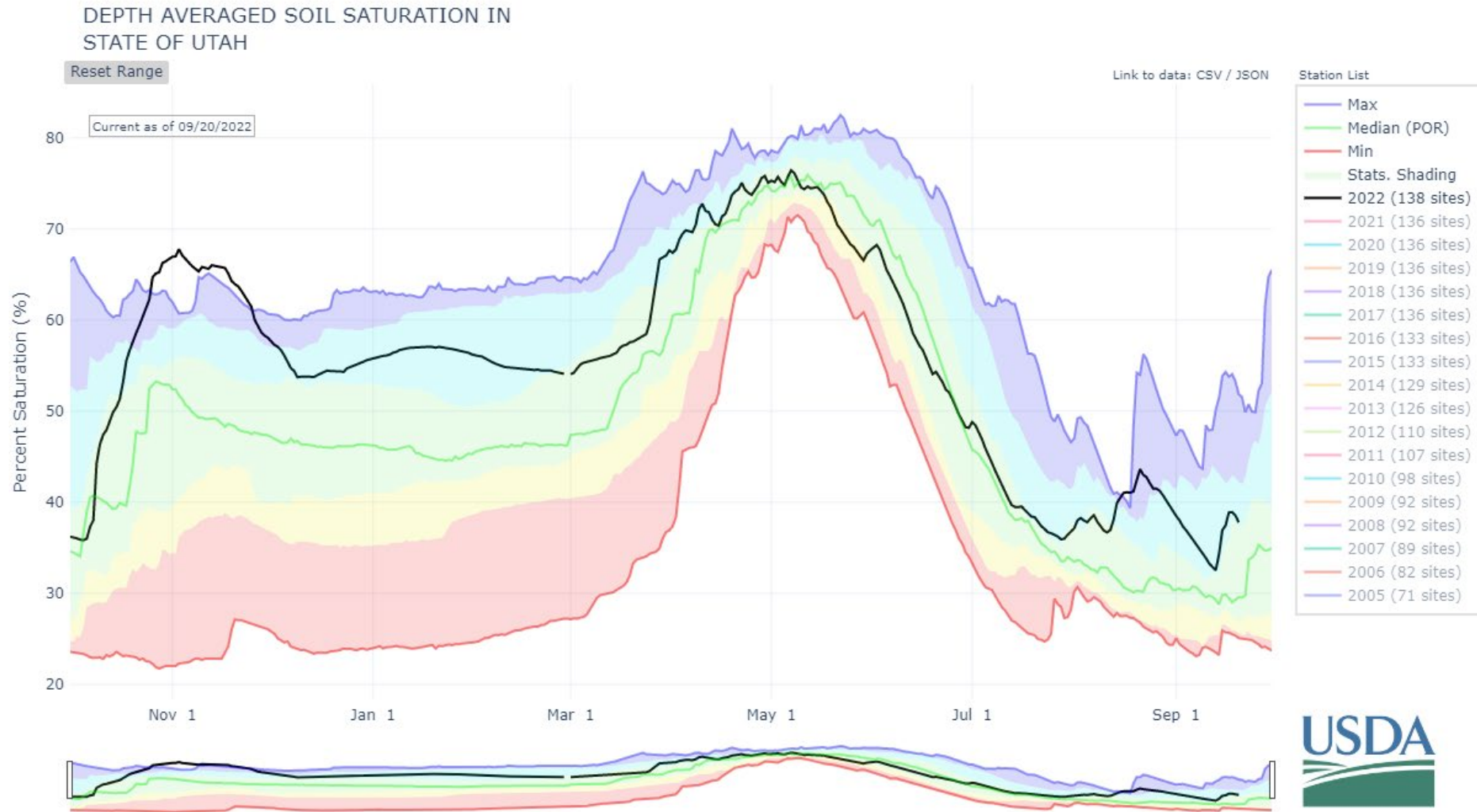
Total volume of water from headwater streams for the water year is 1.06 million acre-feet – typical flow is 1.28 million acre-feet



## Cumulative Flow of 28 Headwater Streams

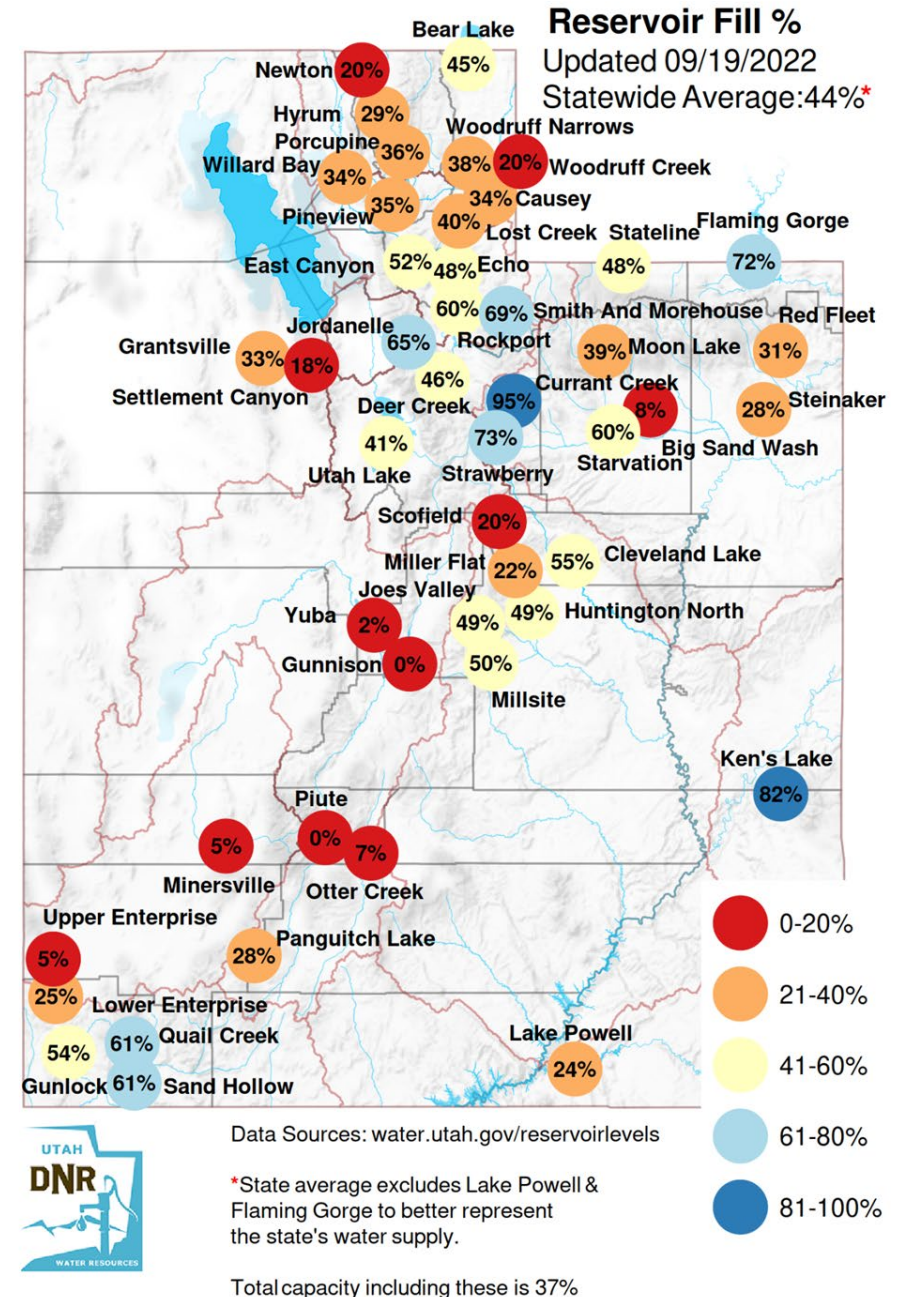


# Soil Moisture – Above Normal



# Reservoir Levels

- Statewide storage is 44% of capacity – about the same as this time last year
- Monsoons and conservation have helped keep water in our reservoirs
- Conditions vary throughout the state, reservoirs shown in “red” are below 20%
- Reservoirs vary in size – some storing a year’s worth of water and some storing multiple year’s
- Snowpack refills reservoirs



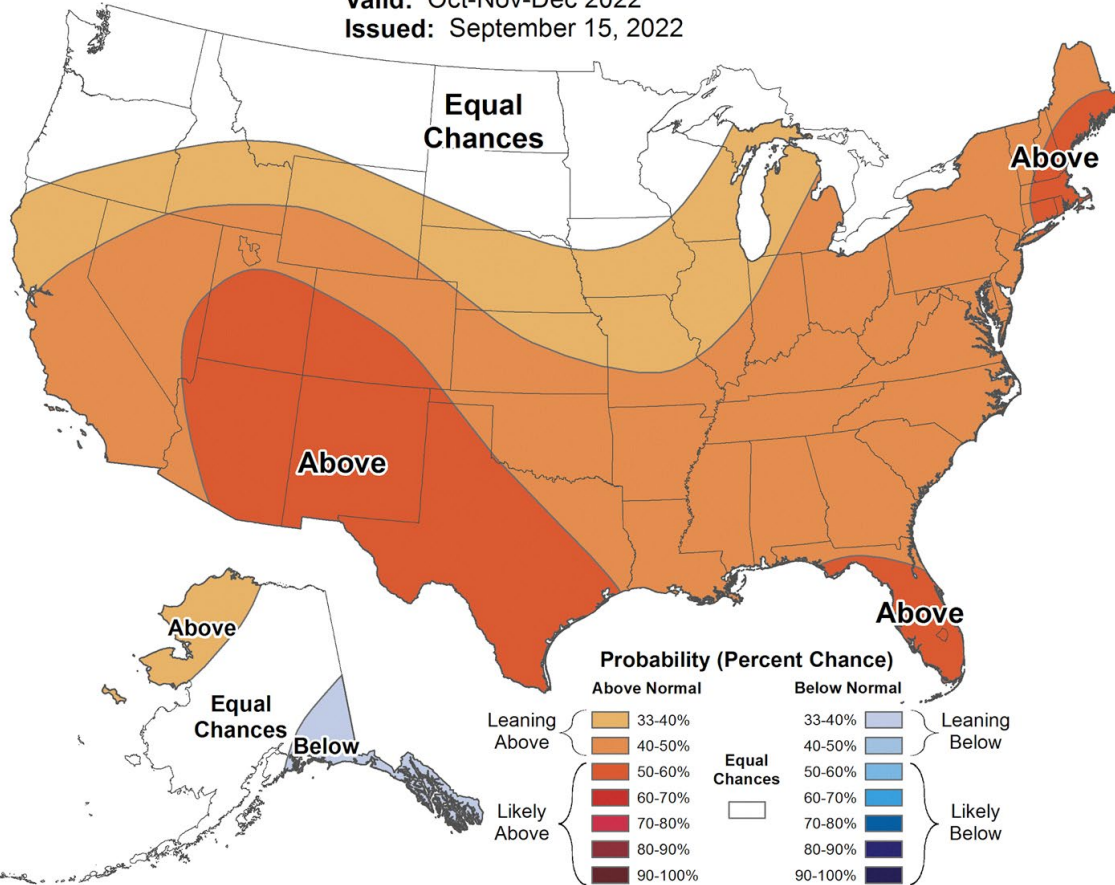
# Seasonal Outlook – Likely Warmer & Drier



## Seasonal Temperature Outlook



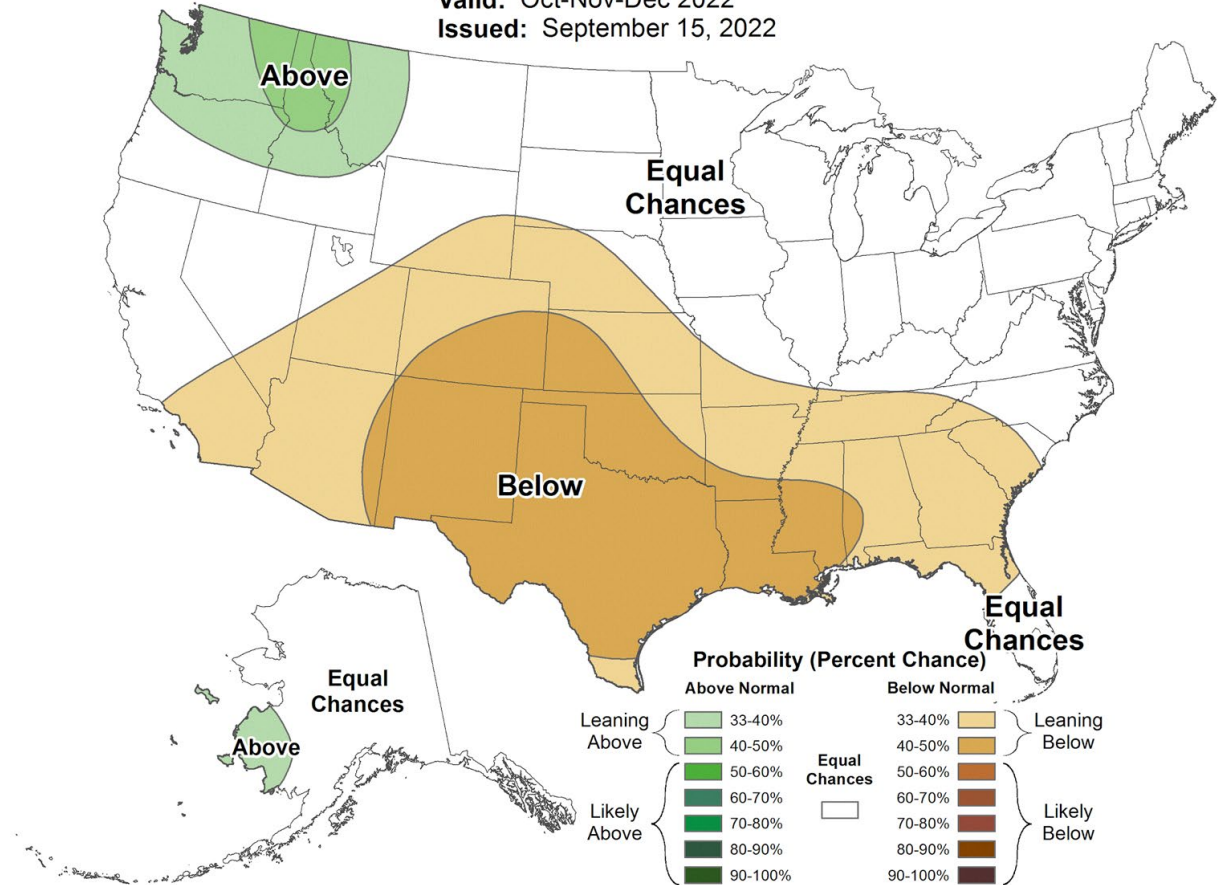
Valid: Oct-Nov-Dec 2022  
 Issued: September 15, 2022



## Seasonal Precipitation Outlook



Valid: Oct-Nov-Dec 2022  
 Issued: September 15, 2022

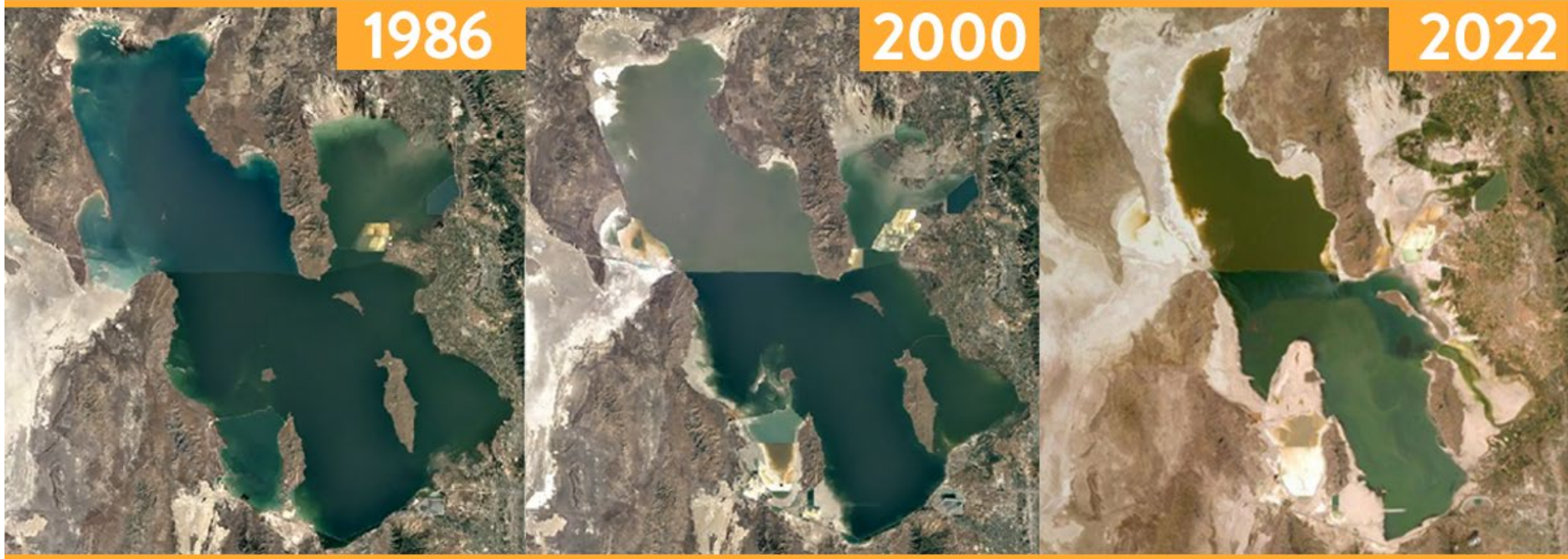


# Great Salt Lake

- Hit a record low (again) July 3, 2022 and continues to drop in elevation (4,189.1)
- Usually rises about 2 feet with spring runoff but in 2021 and 2022, it only increased about 1 foot
- Receding levels impact air quality, snowpack, economy, wildlife, and overall quality of life
- Working on a number of solutions to get more water to the lake
  - Conservation is making an impact
  - \$40 million Water Trust is taking shape
  - Water releases from WMAs
  - Agricultural optimization and secondary metering efforts are underway



# GREAT SALT LAKE ELEVATION



RECORD HIGH  
**4211.65 FEET**

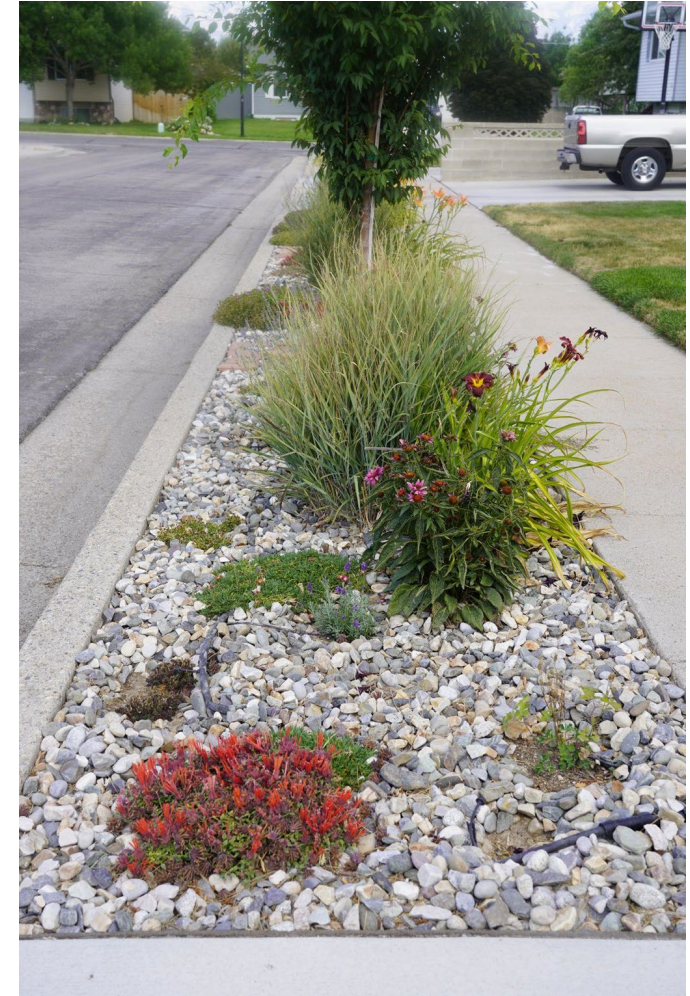
AVERAGE  
**4202.2 FEET**

CURRENT LEVEL  
**4189.1\* FEET**

*\* Levels have continued to drop since the new low of 4190.1 on July 3 and are not expected to rise until fall/winter storms move in and irrigation stops for the season.*

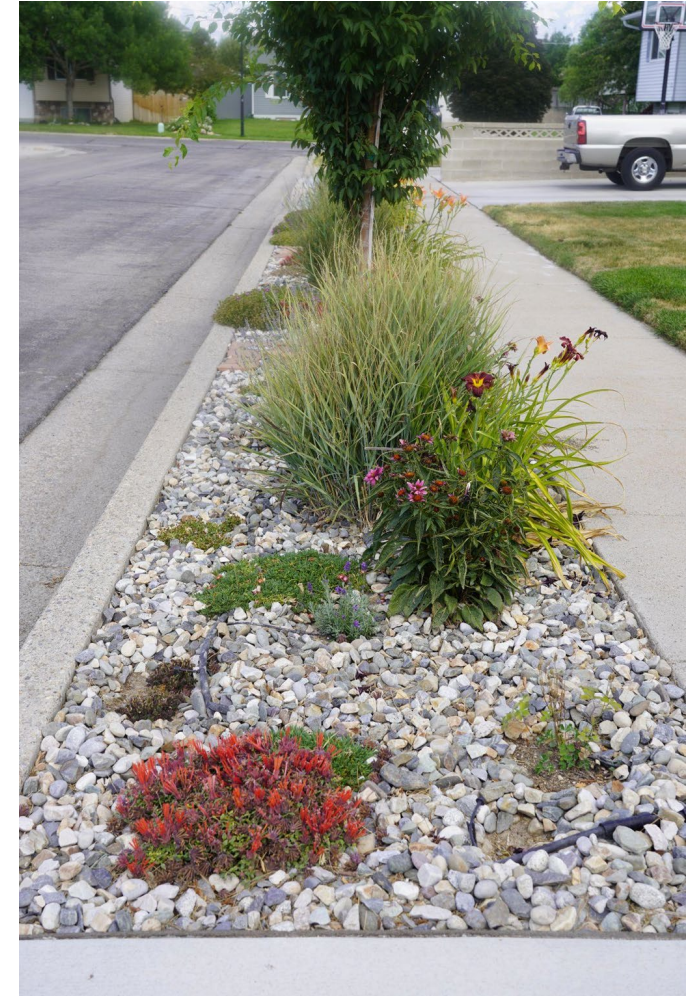
# Water Savings

- SLC saved **2.9 billion gallons** in their service area *(compared to three-year average demand)*
- Sandy City saved **726 million gallons** *(from January 1-August 31)*
- Washington County's water production is **111 million gallons less** compared to last year, despite a nearly 5% increase in the number of connections
- Weber Basin's year-to-date deliveries are down 22%, about **5 billion gallons** compared to last year
- JVVCD has maintained a reduction of half a billion gallons of water compared to last year
- Utah Water Savers processed 23,640 smart irrigation controller rebates and 3,000 toilet rebates *(since program inception in 2018)*



# Water Savings (continued)

- WCWCD's new ordinances are projected to save nearly **11 billion gallons over the next 10 years**
- 17 communities in Weber Basin's service area have adopted water efficiency standards
- 200% increase in Flip Your Strip applications
- SLC has water checks, low-water grass seed, rain barrels and incentive programs



# Secondary Meters

- \$190 million has been authorized to install about 114,000 meters
- These metered connections will help save almost 54,000 acre-feet of water (about the size of East Canyon Reservoir)
- Additional funding of \$120 million is needed to install about 60,000 meters on the remaining connections
- Average water reduction of 20-30%
- 30% of the state's M&I water use is estimated secondary water



# Landscape Rebate – HB 121

- A waterwise landscape can use up to **2/3 less** water than a traditional Utah landscape
- Applications expected to be available by spring 2023, soft launch expected mid-October
- Residents can sign up for email updates to be notified of program launch  
*ConserveWater.Utah.Gov*
- State program will likely follow similar programs offered on the local level by several water districts



# THANK YOU

