



M A G

Expert Resources. Enriching Lives.



Transportation **Corridor Preservation** (CP) is a strategy that state and local governments can use to ensure that the network of rails, highways, roads, and streets will be available to serve existing and future development needs with minimal capital, environmental, and social costs.

- Corridor Preservation vs Right-of-Way Purchases
- Importance vs Urgent
- Process
- Challenges and Opportunities

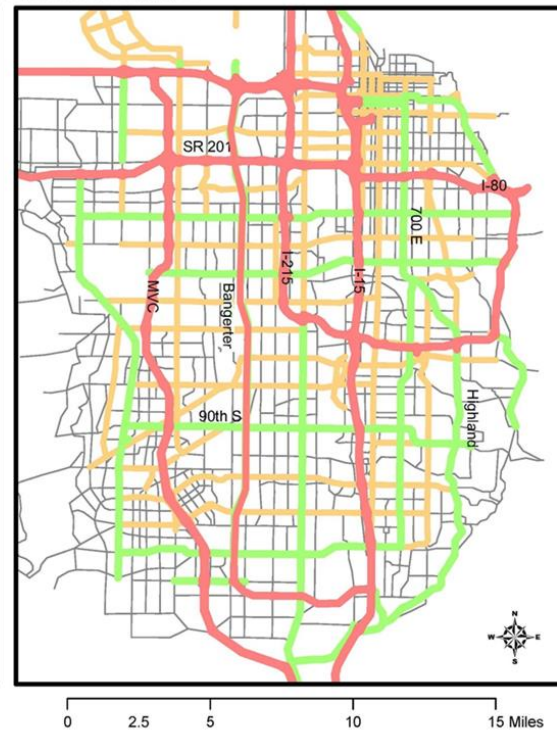
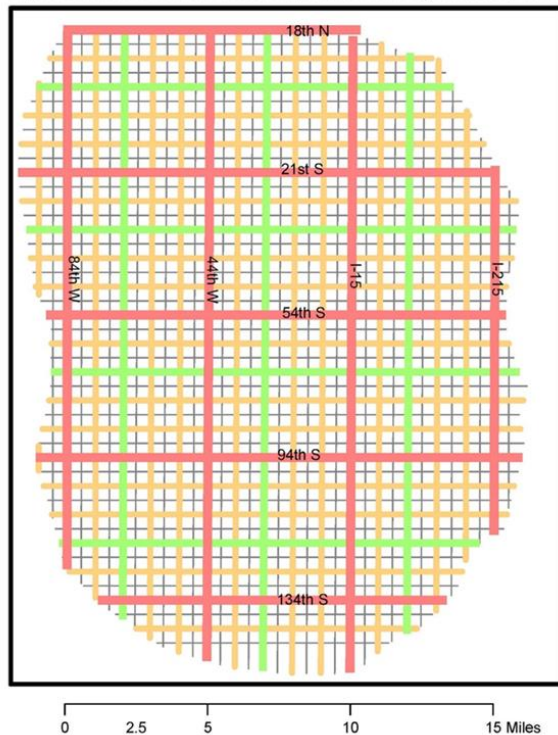


ITE Ideal Spacing vs. SL County Actual

- Legend**
- Freeways (250-400 feet typical)
 - Principal Arterials (106-150 feet typical)
 - Minor Arterials (80-106 feet typical)
 - Collectors (60-72 feet typical)



Applied as recommended in ITE's Transportation Planning Handbook, 1st Edition, 2.2.3.5 Spacing, pg 37



Ideal Build-Out, Modified to Reality



Preservation Needs, by Level of Urgency



Unified Plan Viewer

TRANSPORTATION PLAN

- ▶ 1 Highways
- ▶ 2 Transit
- ▶ 3 Active Transportation
- ▶ 4 Corridor Preservation

The corridor preservation and right-of-way projects represented on this interactive map reflect estimated needs. Alternative analysis and environmental studies will provide more accurate details. In most cases, the corridor preservation and right-of-way costs are included in the transportation project costs. More details forthcoming on the information provided.

The map is a working draft and may not comprehensively address all anticipated corridor preservation

- ▶ 5 All Projects

