

October 19, 2022

Transportation Interim Committee

Carlos Braceras, Executive Director, UDOT
Colonel Mike Rapich, Deputy Commissioner, DPS



Roadway Safety Update



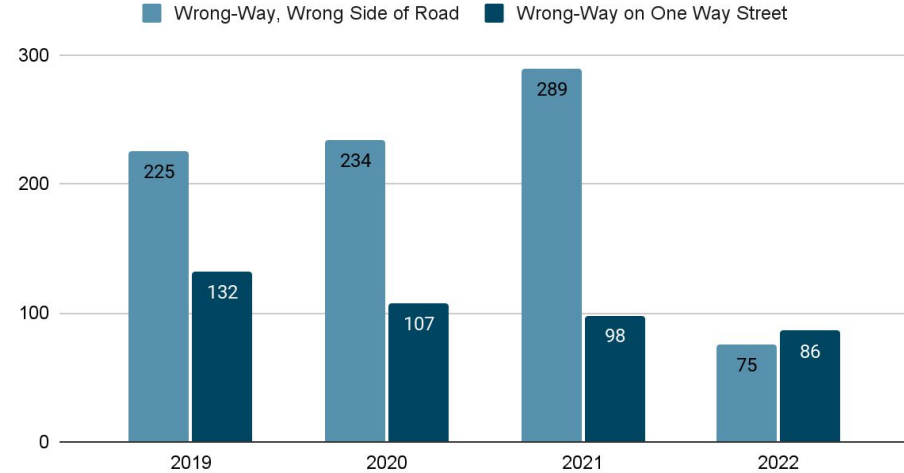
Wrong-Way Driver Citations

Statutes:

41-6A-701, driving on wrong side of roadway.

41-6A-709, wrong way on one way street.

Wrong-Way Driver Citations



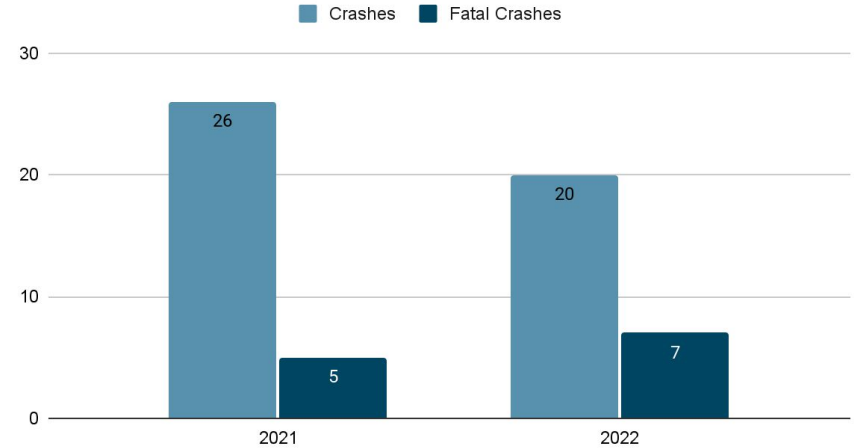
Wrong-Way Driver Crashes

In 2021, wrong-way driving crashes made up 0.04% of all crashes.

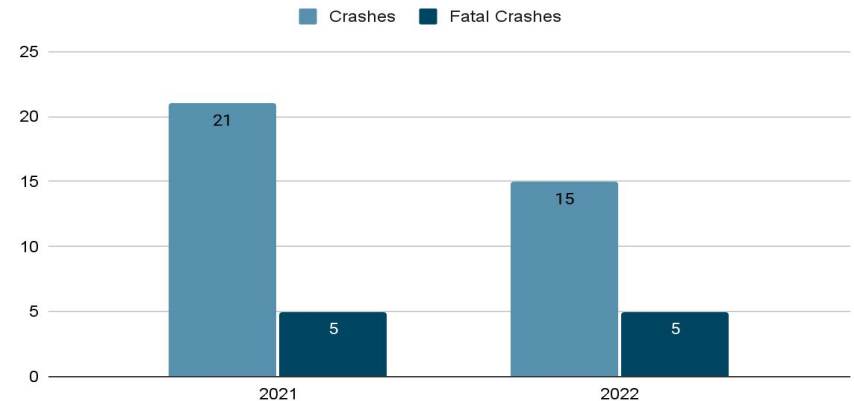
As of October, 4, 2022, wrong-way driving crashes make up 0.05% of all crashes.



Statewide Wrong-Way Driver Crashes



UHP Wrong-Way Driver Crashes

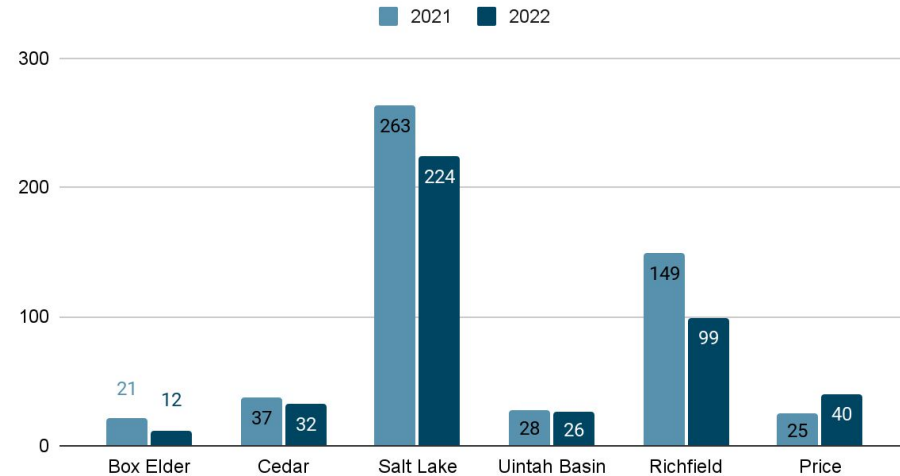


Calls to Dispatch

In 2021 there were 523 wrong-way driver calls to DPS Dispatch Centers statewide.
As of October 5, 2022 there have been 433 wrong-way driver calls.

These numbers may represent multiple calls for the same wrong-way driver.

Calls to Dispatch



Not all dispatch centers returned our request for information.

Speed Over 100

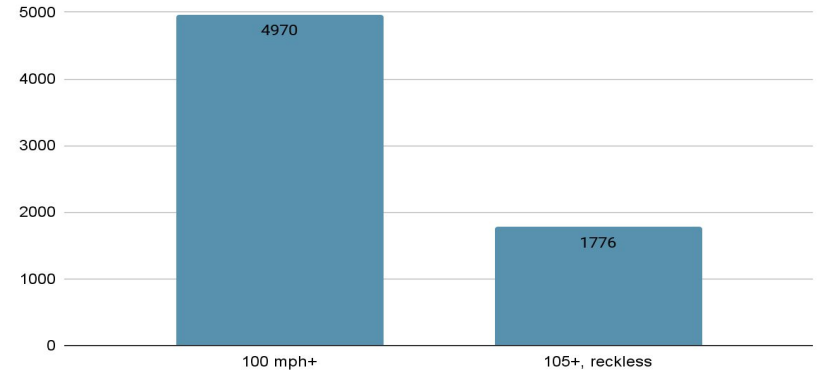
Statutes:

41-6A-601(4)(b)- 100 mph

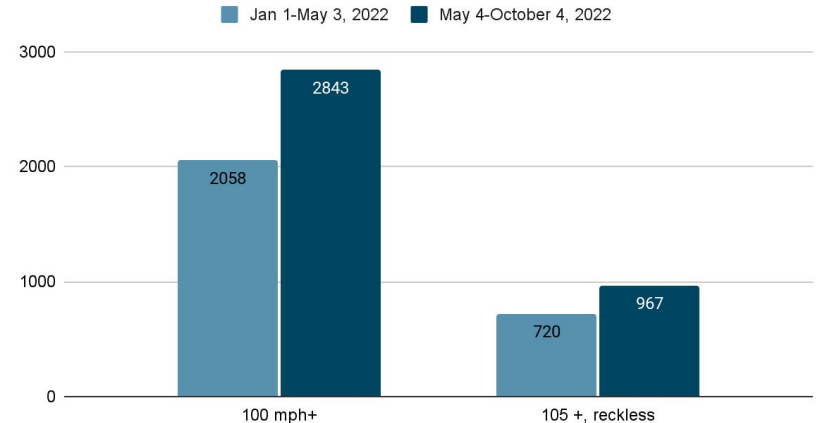
41-6A-528(2)(a)- 105 mph+, reckless driving

Both statutes were effective May 4, 2022

Speeds Over 100 in 2021



Speeds Over 100 in 2022



Wrong Way Driving

- Actions Taken
 - Multi Agency Team Meetings
 - Field Review and Updates
 - Technical Research Team
 - Crash Data Review
 - Updated Standards and Practices

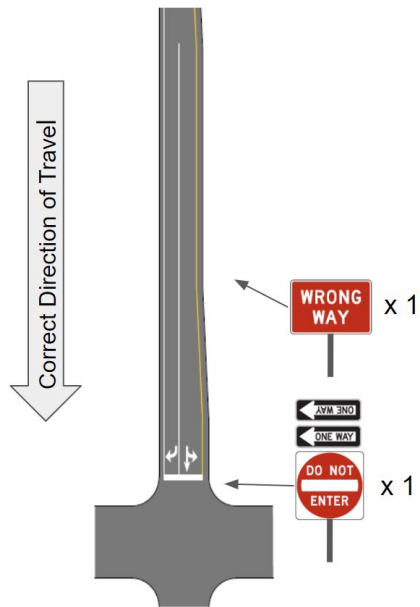


Wrong Way Driving

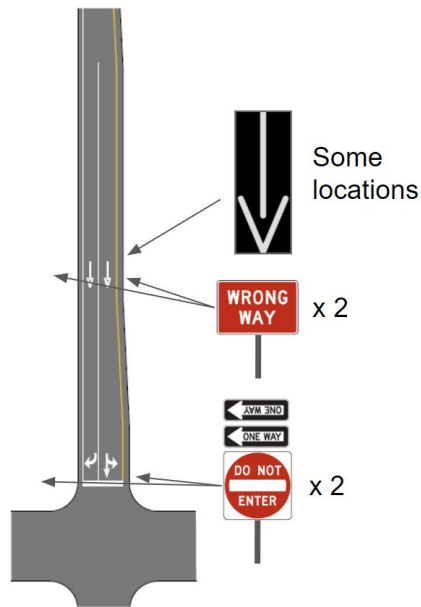


Wrong Way Driving

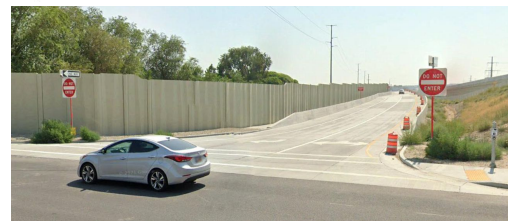
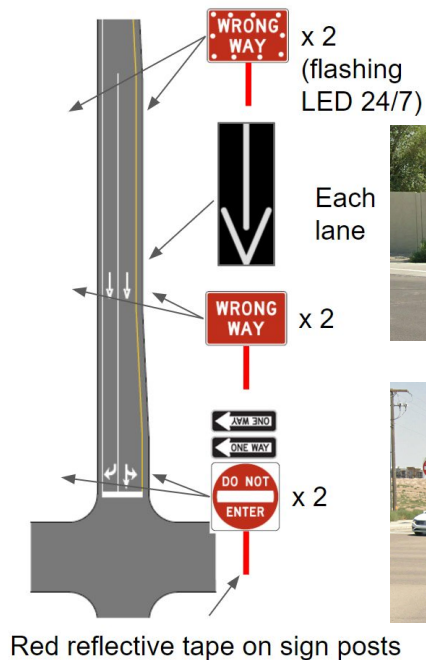
MUTCD Minimum



Current Inventory



Standard (Future)



NB MVC Off-Ramp / 2700 S.

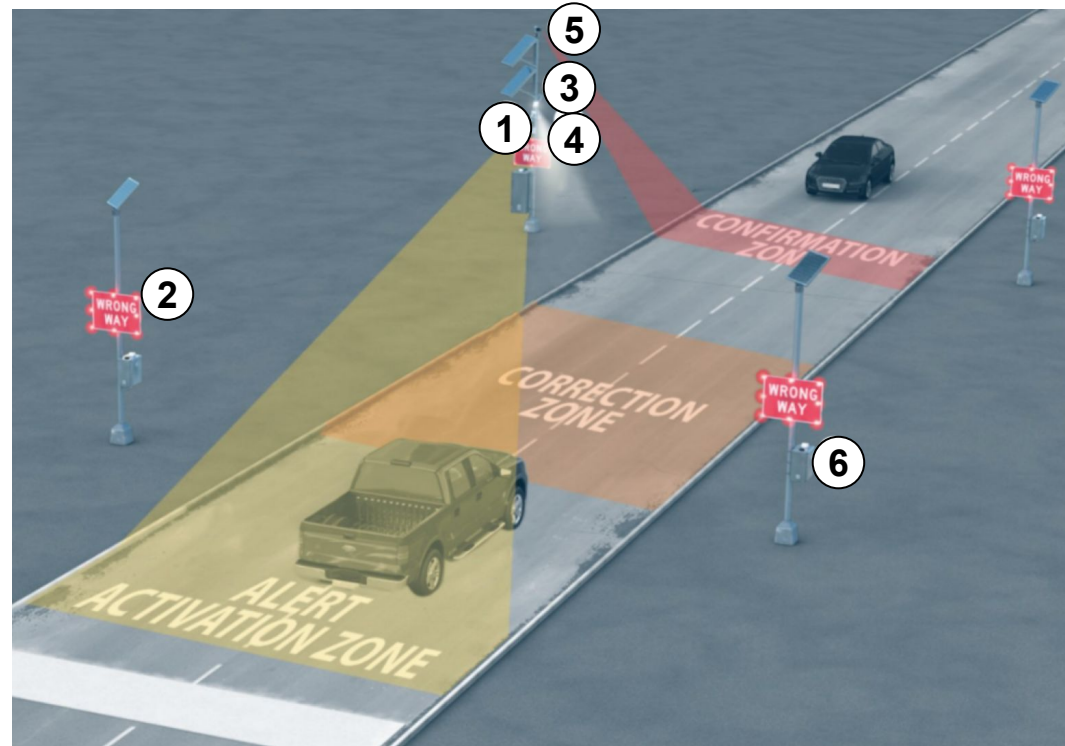


SB MVC / 13400 S.

Wrong Way Driving

Wrong-Way Driving Detection System

1. Activation sensors
2. Warning alerts
3. LED Illuminators for night images
4. HD Cameras capture images
5. Confirmation Sensors
6. Software sends real-time verification of system activation



Wrong Way Driving

