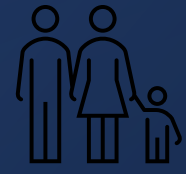


Request for Appropriation- Pave the Phoston Spur Trail



\$495,000 Funding Request in Summit County for Active
Transportation and Outdoor Recreation

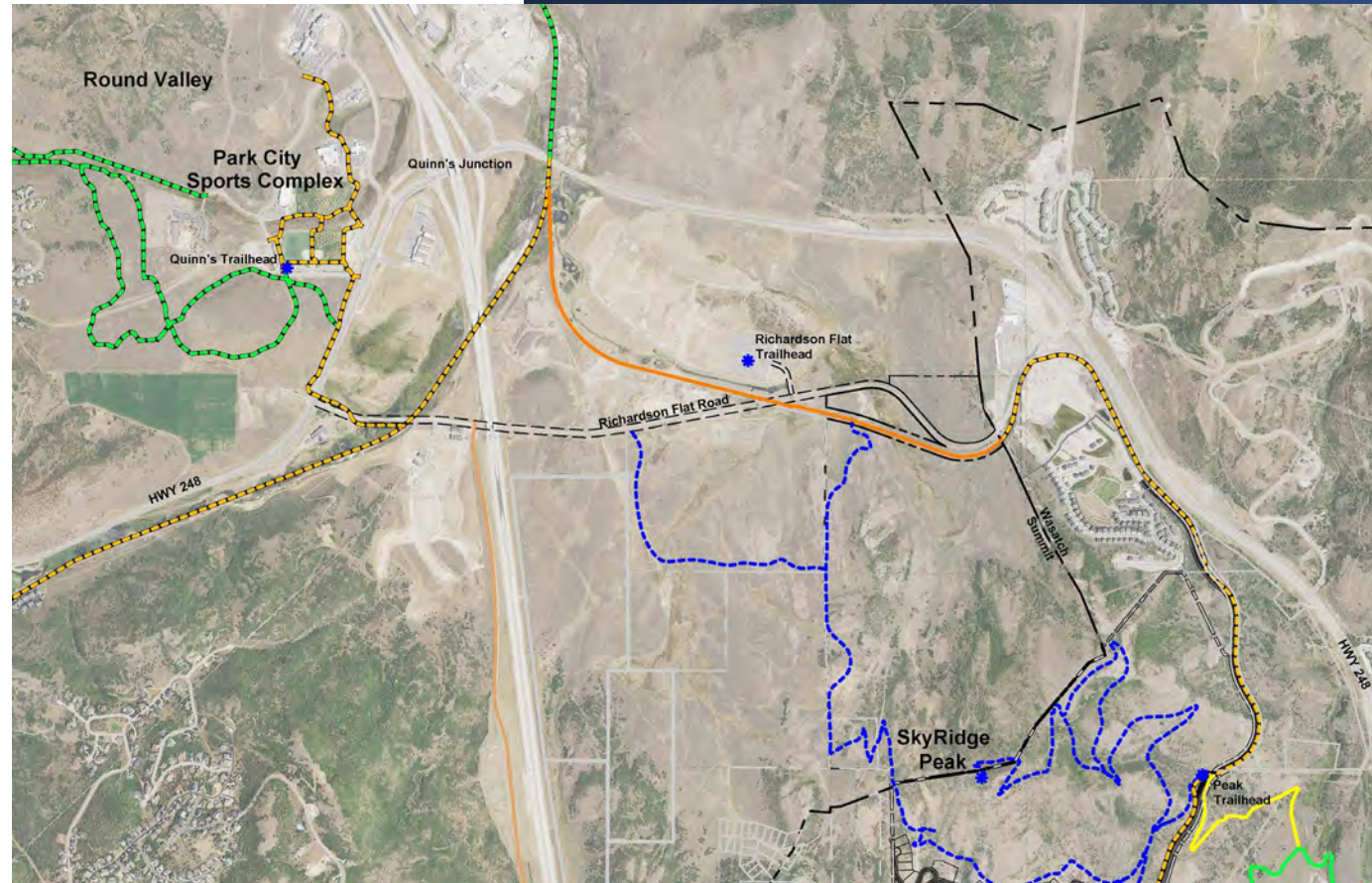
Summit County, UT

Overview Photo – Phoston Spur shown in Yellow Below North of Jordanelle Reservoir and Southeast of Park City Hospital in Summit County, Utah



Phoston Spur Trail Details

- The Phoston Spur trail currently exists as an old railbed gravel trail
- Approximately 8,040 linear feet of gravel path currently in existence between two paved trails (Park City Rail Trail and Jordanelle Parkway Trail)
- Provide a seamlessly paved connection to/from the Jordanelle Area and Park City Area
- Connect Wasatch and Summit Counties
- Phoston Spur railbed shown in Orange →



Phoston Spur - part of the Wasatch Loop

- 250 Miles of Non-Motorized Trail
- Nearby access for 78% of Utah's Population
- Nearly 70% complete



Current State of the Phoston Spur Trail



Safety Improvements & Active Transportation

- Trail Improvements would increase user safety and provide an active mode of transportation
- Increase ease of ridership/usership on an improved trail and offer outdoor recreation opportunities for various ability levels
- Connect populated areas via trail system to decrease automotive single transit use
- Support Wasatch and Summit County Transit initiatives



Project Budget Details –

as of January 22, 2023

ITEM	AMOUNT
Construction Costs	\$370,000
Permits & Fees	\$7,500
Survey & Engineering	\$20,000
Landscaping & Hydroseeding	\$25,000
Signage & Wayfinding	\$35,000
Contingency	\$37,500
Total Project Budget:	\$495,000

Conclusion



\$495,000 funding request to pave the Phoston Spur.



Crucial middle piece connecting the Jordanelle Parkway Trail and the Park City Rail Trail – Connecting Wasatch & Summit Counties.



Increase safety and pedestrian usership by improving the existing trail.



Trail Connectivity for Two Already Paved Trails – improving the Wasatch Loop.