



MOUNTAINLAND
TECHNICAL COLLEGE

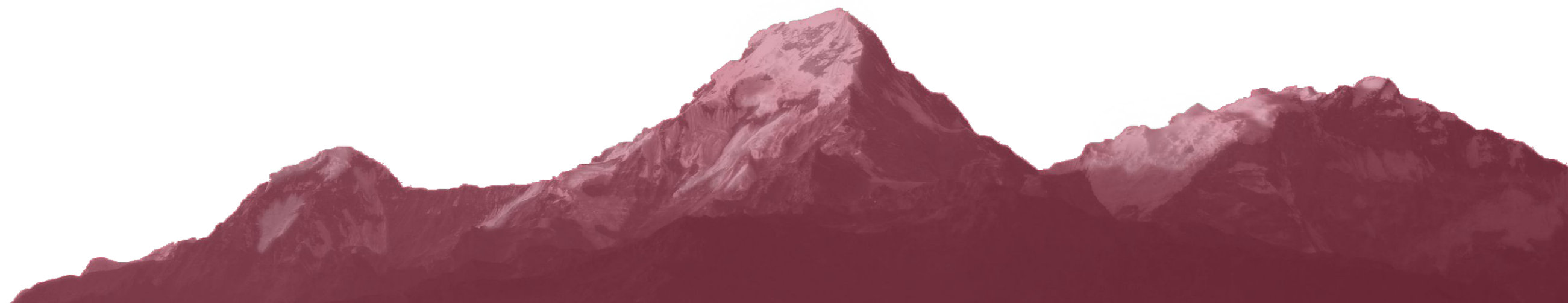
A Proposal for Heber Valley
Infrastructure and General Government Subcommittee

Clay Christensen, President
February 1, 2023

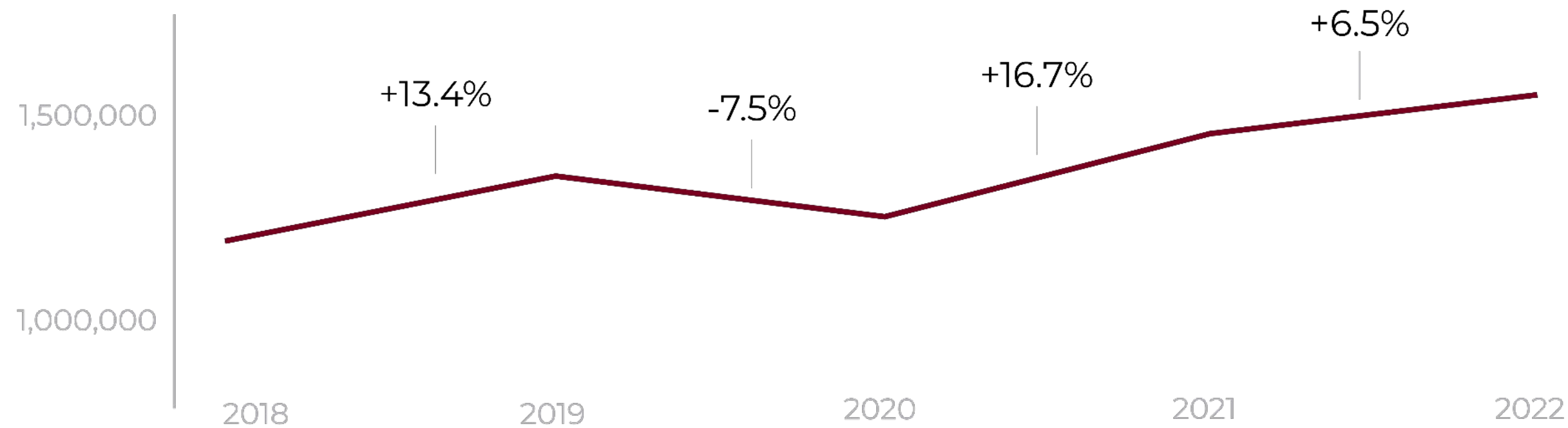
THE CHARGE

To prepare the workforce in the three county service region and implement the Mission Statement of the Mountainland Technical College through the five core areas of: Program Development; Student Achievement; Faculty and Staff Support; Physical Resources; and Community Outreach.

- Mountainland Technical College, Official Vision Statement



MTECH ENROLLMENT GROWTH



TOTAL MEMBERSHIP HOURS:

2019: 1,338,093

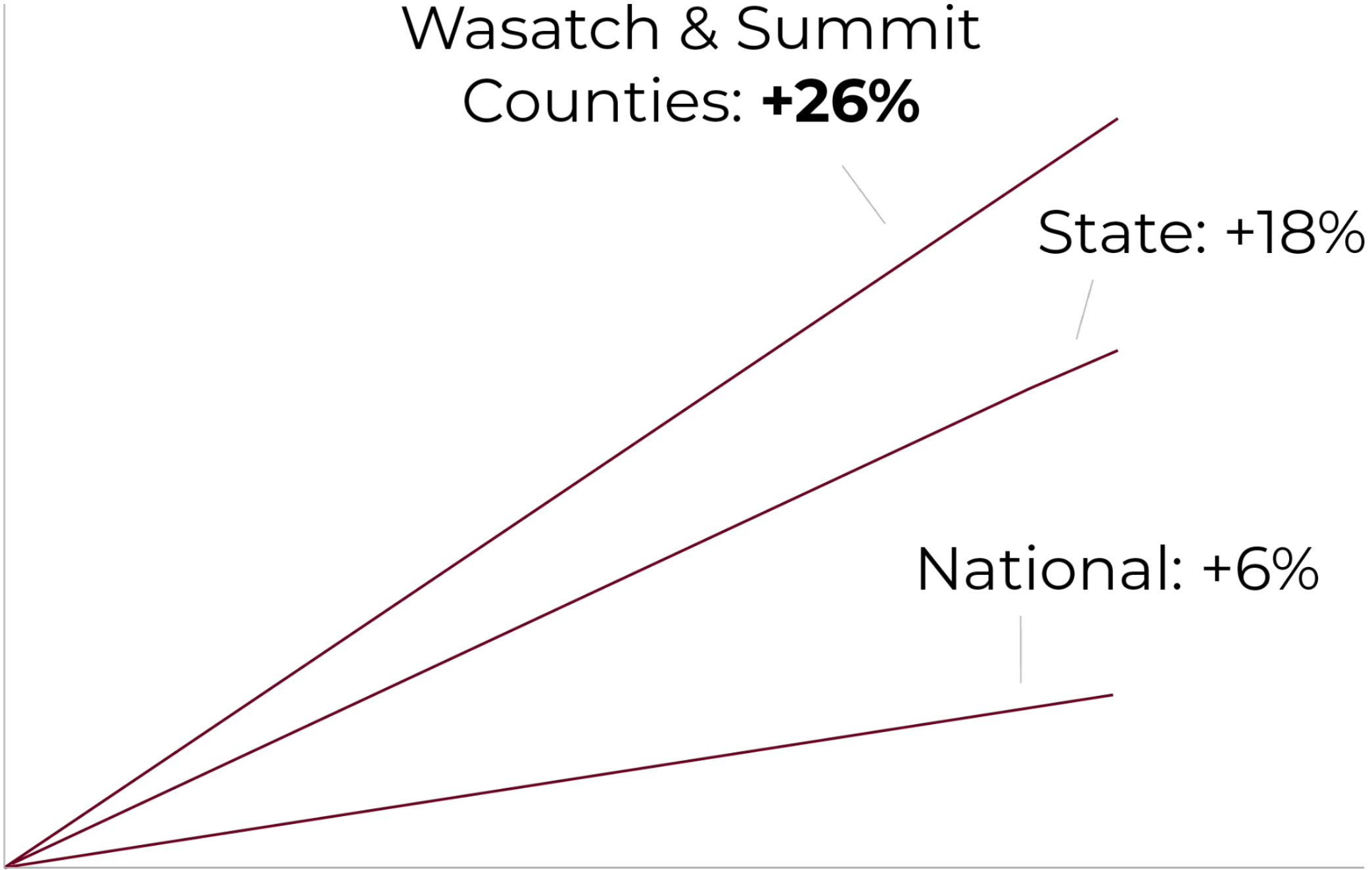
2020: 1,246,774

2021: 1,454,420

2022: 1,548,651

Membership hours have grown by **36.09%** (473,711) since 2016.

WASATCH & SUMMIT ARE GROWING



Projected 10 Year Population Growth



WASATCH-SUMMIT WORKFORCE NEEDS

4,905 Wasatch-Area Jobs Currently Unfilled in MTECH Program Areas*

*“Over the next 5 years, employment in the Wasatch-Summit region is projected to expand by 4,897 jobs”**

	Wasatch: 10-Year Growth	Summit: 10-year growth
Information Technology	39.2%	17.2%
Health Services	44.7%	19.8%
Manufacturing	33.5%	5.1%
Transportation	45.8%	22.9%
Culinary & Accommodation	54.0%	30.8%
Construction	34.9%	9.1%



** Sources: July 2022:
JobsEQ: <http://www.chmuraecon.com/jobseq>*

CURRENT WASATCH FACILITY

- Current space at Wasatch high school doesn't support adult enrollment.
- No additional capacity for expansion of programs.
- Confusing program structure between various temporary facilities, spread across Wasatch County.



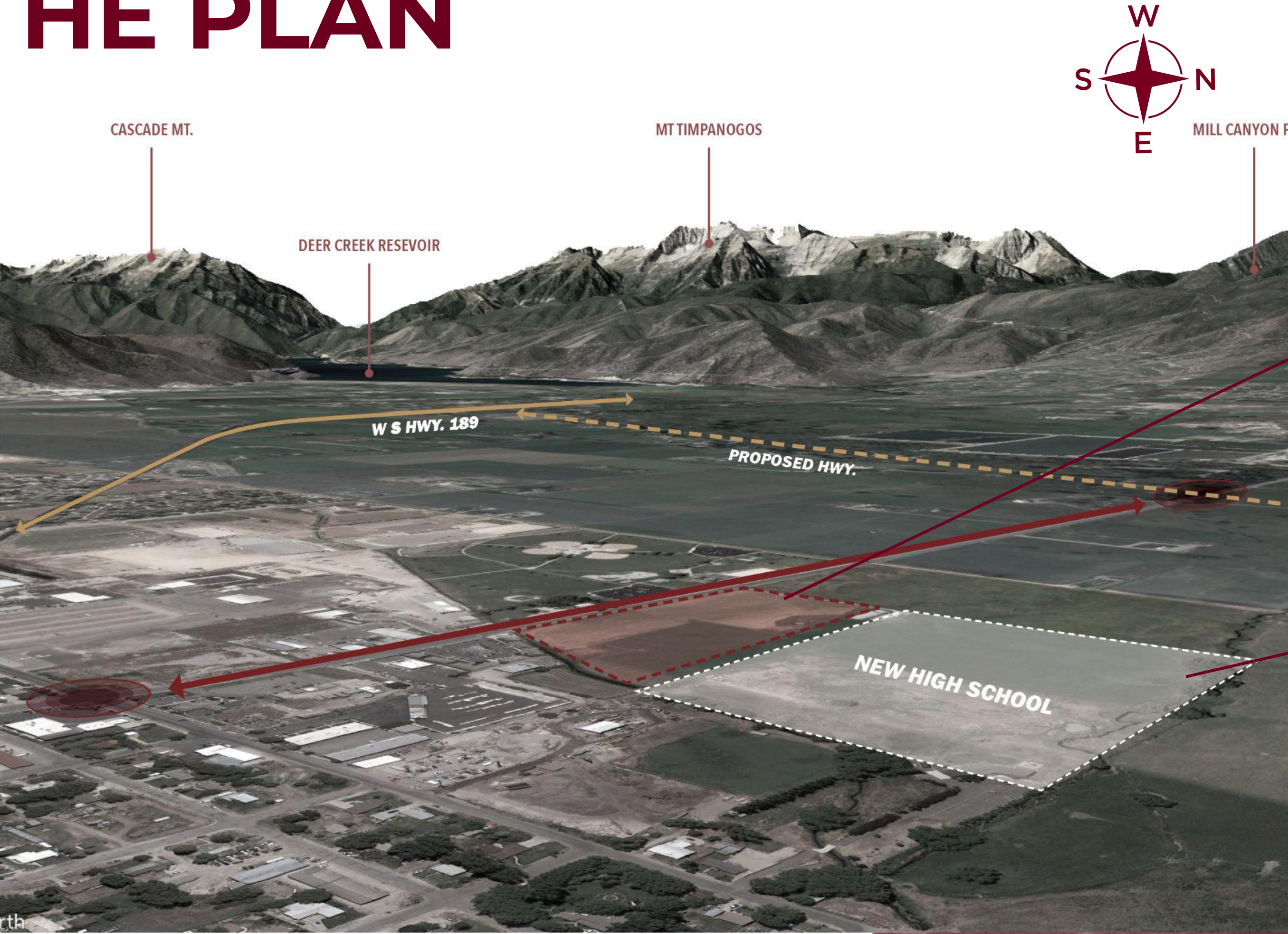
Wasatch High School, West

MOUNTAINLAND TECHNICAL COLLEGE

HEBER VALLEY



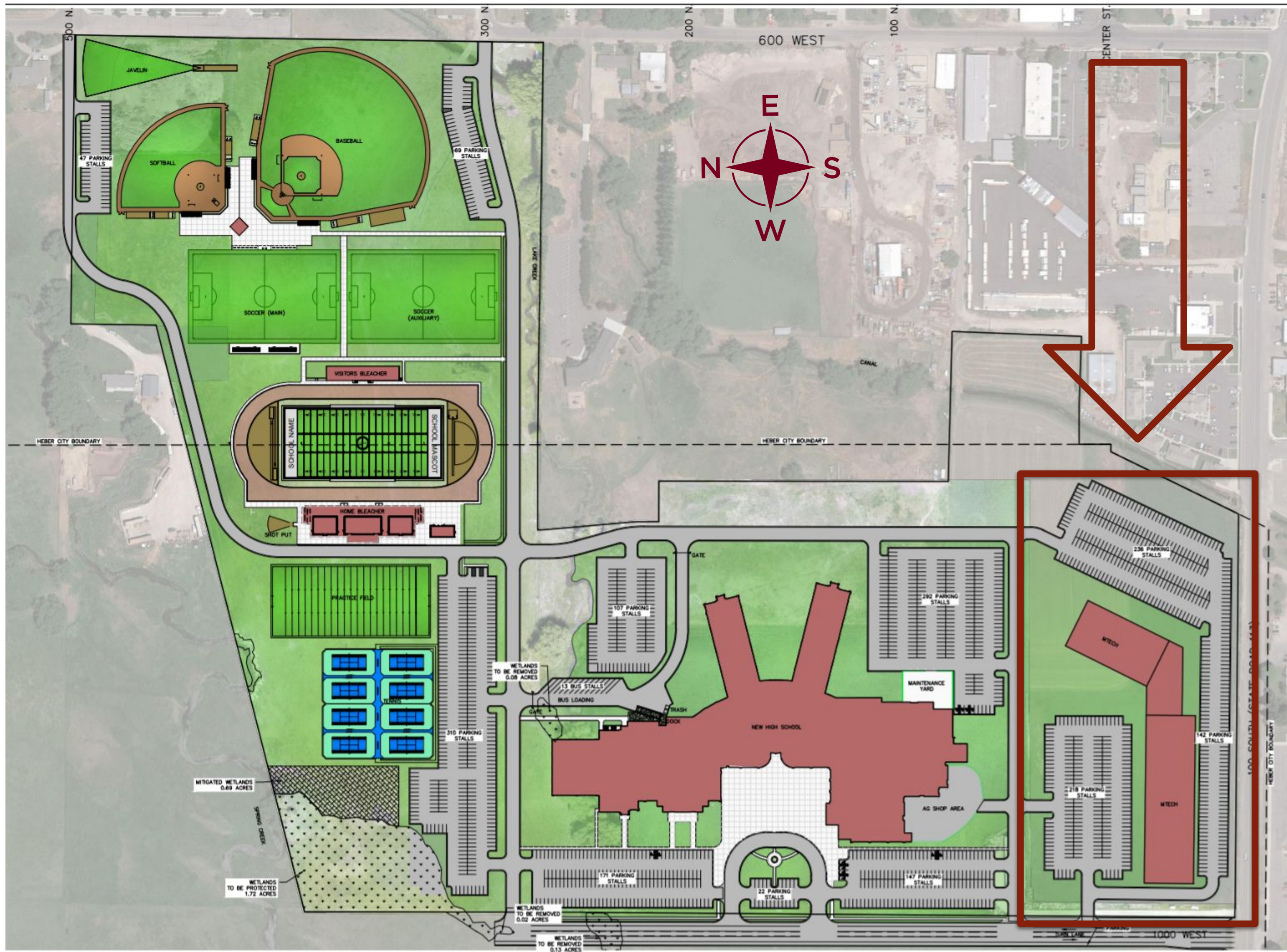
THE PLAN



**MTECH FACILITY
10.75 ACRES**

*Located at approximately
100 S & 900 W*

NEW HIGH SCHOOL



PARKING	NEW SCHOOL	WHS
BUS	13	12
PARKING	1155	874
MTECH	596	---

SPORTS FACILITIES NOTE:
 THIS SCHOOL HAS THE SAME SPORTS FACILITIES AS THE CURRENT WASATCH HIGH SCHOOL EXCEPT THAT THIS PLAN HAS 8 TENNIS COURTS WHICH ALLOWS TO HOST LARGER TOURNAMENTS INSTEAD OF 6 COURTS.

MITIGATED WETLANDS
 0.69 AC
 (3X REMOVED WETLANDS)

WETLANDS PER REPORT
 MAY 2020
 0.23 AC (TO BE REMOVED)
 1.72 AC (TO BE PRESERVED)

THIS DOCUMENT IS INCOMPLETE
 AND IS RELEASED TEMPORARILY
 FOR INTERIM REVIEW ONLY. IT IS
 NOT INTENDED FOR CONSTRUCTION,
 BIDDING, OR PERMIT PURPOSES.
 PAUL D. BERG P.E.
 SERIAL NO. 295095
 DATE: 25 JULY 2022



SCALE: 1"=100'

Wasatch County School District
NEW HIGH SCHOOL
 NEW HIGH SCHOOL WITH MTEC
 CONCEPT PLAN



DESIGN BY: PDB DATE: 25 JUL 2022 SHEET
 DRAWN BY: DEJ REV: _____

MTECH- HEBER VALLEY



- > **675 students ready to go in first cohort**
- > **Comprehensive Campus:**
 - Technology
 - Trades
 - Healthcare
 - Service
 - Apprenticeship
- > **\$129 M into the Utah economy- every year**

ECONOMIC IMPACT OF MTECH GRADUATES

2022 Wasatch/Summit Graduates:	302
Annual Economic Impact:	\$57,716,000
Projected Graduates, Year One:	675
Projected Annual Impact:	\$129,000,000



PROJECT SUPPORT



UTAH SYSTEM OF
HIGHER EDUCATION

***Number One Priority for the
System of Higher Education***



***2.5 Acre Land Donation,
valued at \$914,560***



CAPITAL DEVELOPMENT REQUEST

TOTAL PROJECT SPACE: 101,647 sq. ft.

DFCM CAPITAL BUDGET ESTIMATE: \$66,651,400

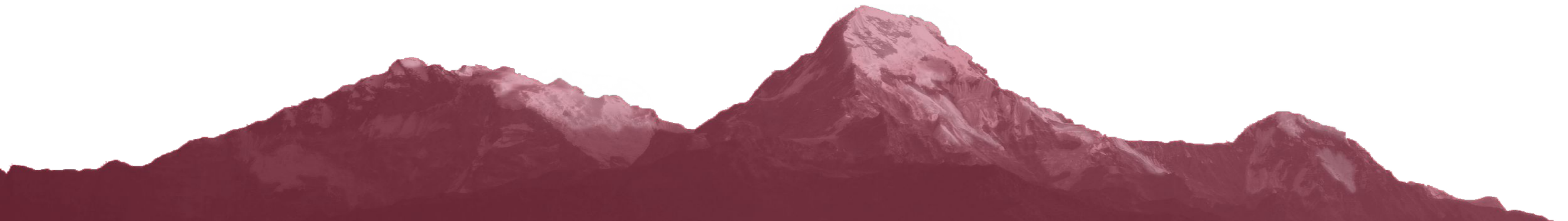
2.5-Acre Land Donation (\$914,000)

FY2023 REQUESTED FUNDING: \$65,737,400

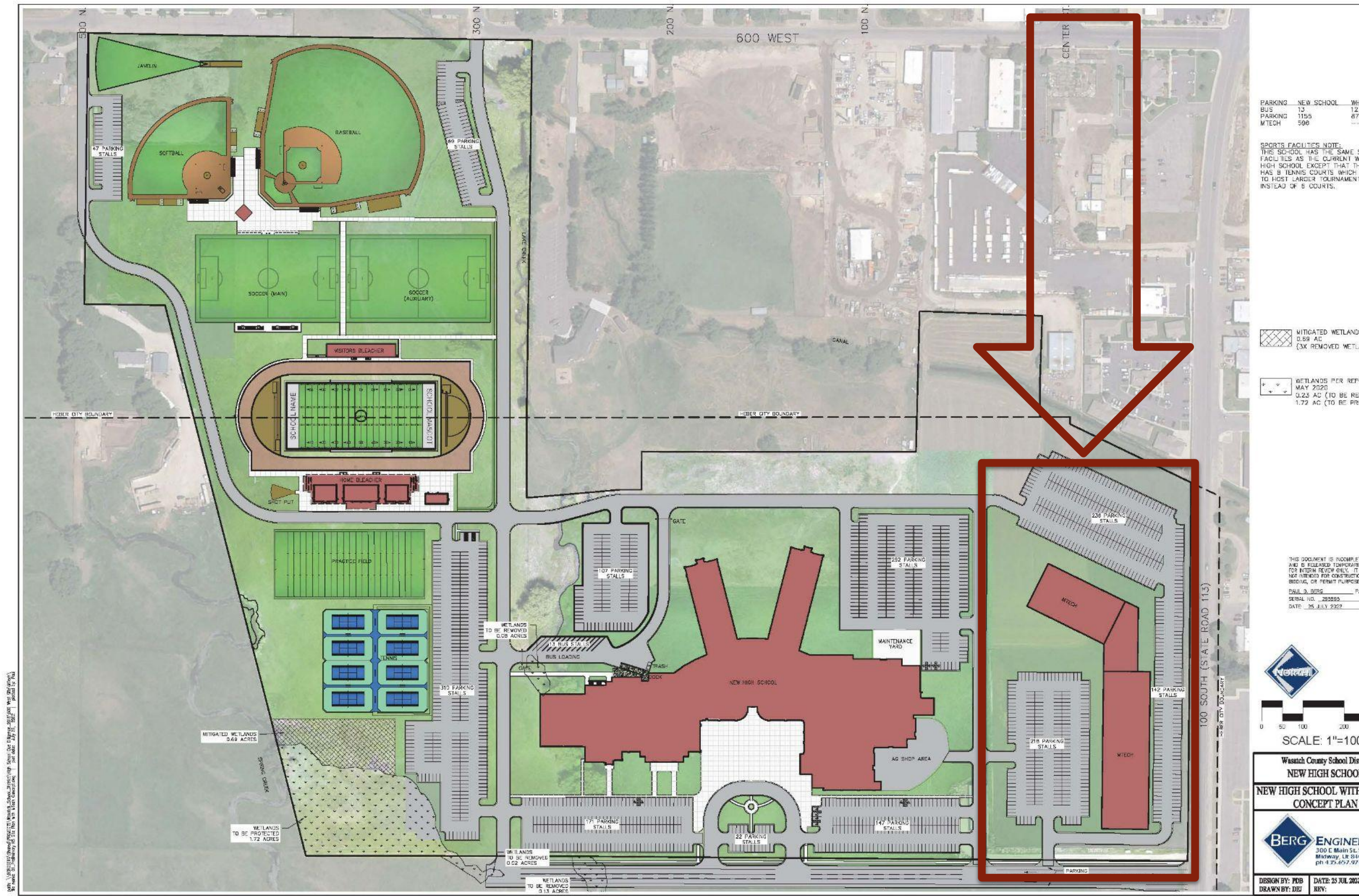


PROPERTY

- Mountainland Technical College proposes to purchase 8.2 acres of vacant land for a purchase price of \$3 Million.
- Wasatch County School District will donate an additional 2.5 acres of adjacent land if the 8.2 acres are purchased.
- Total purchase price \$3M



Proposed Heber Valley Campus





MOUNTAINLAND TECHNICAL COLLEGE

