

An aerial photograph of the Utah State University campus in Logan, Utah, taken during the golden hour of sunset. The sun is low on the horizon to the left, casting a warm glow over the scene. The campus is a dense cluster of buildings, including a prominent green glass building in the foreground. A large green field is visible in the middle ground. The campus is surrounded by lush green trees and a road curves along the right side. In the background, rolling green hills and mountains are visible under a sky filled with soft, white clouds.

FY24 Dedicated Capital Project Requests Utah State University

**Presented by
President Noelle E. Cockett
February 3, 2023**

Huntsman Experiential Learning Center

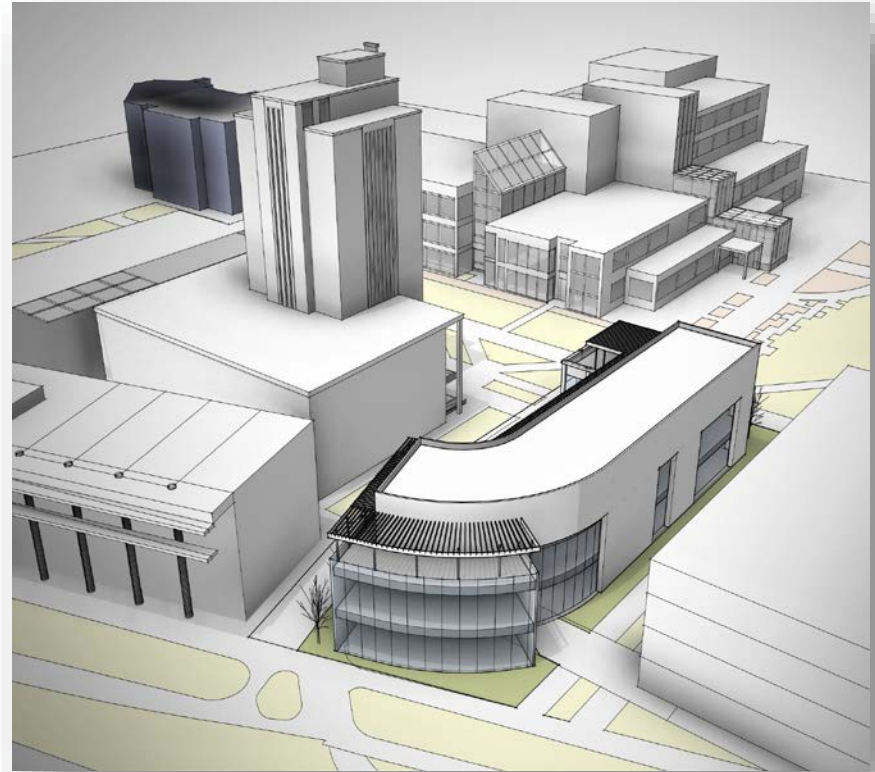
THE PROJECT:

- Facilitates experiential learning and leadership activities of the Huntsman School of Business (HSB)
- Located east of the existing HSB complex
- Accommodates these HSB centers:
 - Covey Leadership Center
 - Center for Growth and Opportunity
 - Center for Entrepreneurship
 - Analytic Solutions Center
 - She's Daring Mighty Things
 - Interdisciplinary Study
 - Internship and Start Up



Cost-effectiveness and Efficient Use of Resources

- Utilizes cost-effective and efficient uses of resources through a functional design that meets the state's requirements and connects to existing centralized utility infrastructure
- Maximizes this quadrant of the USU-Logan campus by adding additional academic space
- Ensures the correct amount of square footage for specific program and center requirements



Consistent with Role, Mission, and Master Plan

- Provides students with experiential learning and career-enhancing training, which prepares them for high-paying employment
- Enhances the Huntsman School's goals:
 - Increases the number of undergraduate students
 - Grows the Huntsman Scholar Program
 - Closes the gap between the number of female and male graduates
 - Provides high-quality experiential learning opportunities



Huntsman Experiential Learning Center

PROJECT BUDGET:

PRELIMINARY COST ESTIMATE	\$29M
USU funding in-hand	\$11.5M
Donor pledges	\$7.5M
Dedicated funding request	\$10.0M
TOTAL PROJECT SPACE (GSF)	47,239
New space (GSF)	47,239
Remodeled space (GSF)	0
Leased space to be vacated (GSF)	0
STATE-FUNDED O&M REQUEST	\$393,501

Summary of HSB Experiential Learning Center Project

- Critical programs and student enrollment in the Huntsman School of Business are currently constrained by existing facilities
- Educational quality will be enhanced, positioning more HSB students for success in the workforce
- Placement of the facility adjacent to the existing HSB complex is key for collaboration among HSB students and faculty
- **Request \$10.0M of the \$14.2M USU Dedicated Capital Project funding in FY24**



UTAH
STATE