

## PROGRAMMED & ACTIVE FEATURES

- 1 Bike Repair Station with Bike Racks and Seating
- 2 Table Top Crossings For Traffic Calming and Improved Pedestrian Safety
- 3 Roundabout with Attached Parking for Traffic Calming and Improved Circulation
- 4 Fire Pits/Rings (Varying Sizes) Within Seat Walls
- 5 Playground Signage and Bike Parking
- 6 Playground For All Ages with Seat Walls at Edges
- 7 Expanded Parking Lot with Improved Circulation
- 8 Rock Wall and Bouldering Course
- 9 Fishing Pier
- 10 Secondary Trail: Bicycle Turnaround
- 11 Relocated Pavilion and Covered BBQ Facilities
- 12 Bridge Improvements and Trail Connections
- 13 Secondary Trail/Pathway Improvements

# TRAIL CONNECTIONS

## BICYCLE & PEDESTRIAN TRAILS

- ■ ■ ■ PROVO RIVER TRAIL (PRT)
- ● ● ● VIVIAN PARK TRAIL SPUR
- ● ● ● CONNECTIONS WITH PRT

## TRAIL SUPPORT AREA

- BIKE REPAIR STATION & TRAIL REST STOP



SHEET NO.	1
-----------	---

U.S. Standard Units  
(Inch-Pound Units)

ALL UNITS IN FEET UNLESS OTHERWISE NOTED

SEE SHEET 1A FOR INDEX

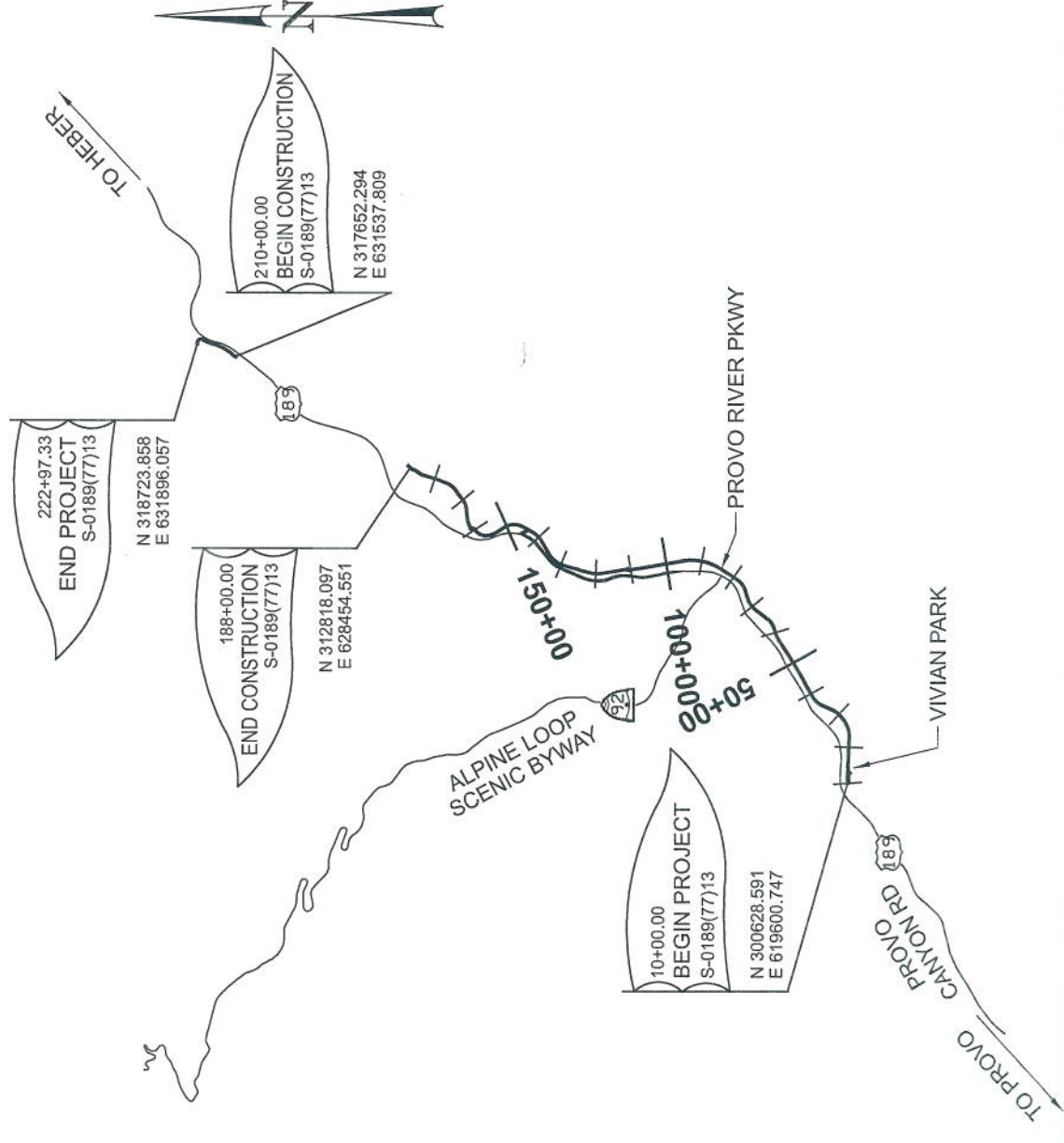
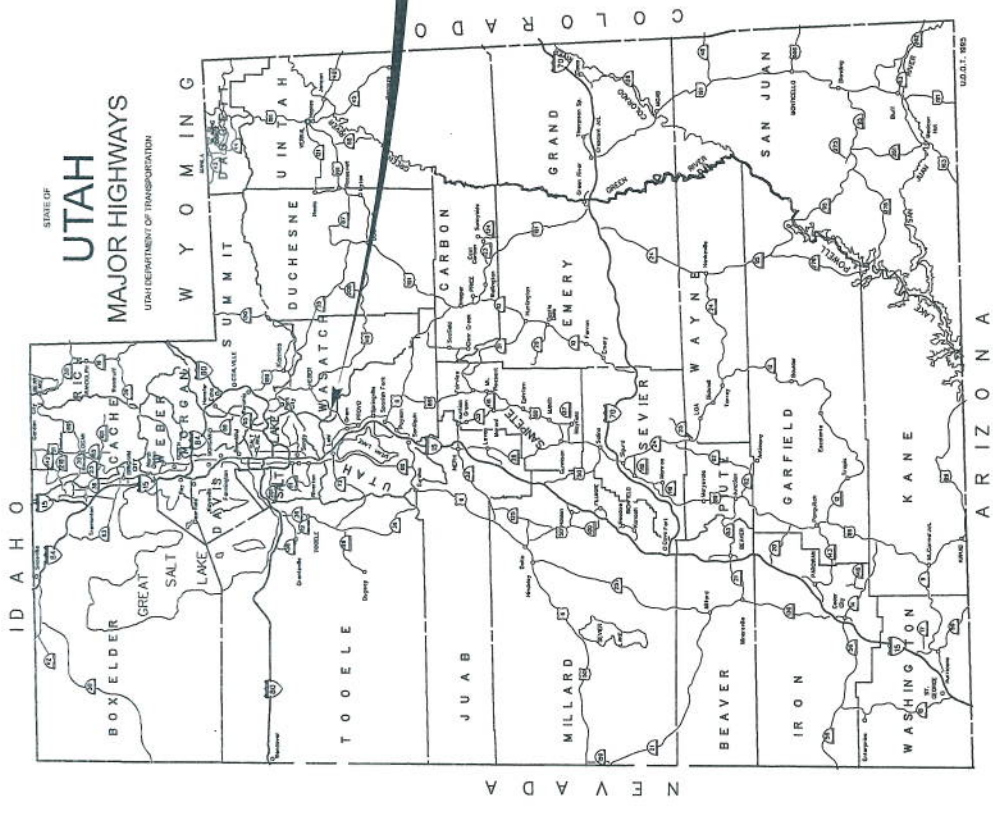
# UTAH

## DEPARTMENT OF TRANSPORTATION

PLANS OF PROPOSED STATE ROAD  
STATE FUNDED

S-0189(77)13 PIN: 14698

PROVO RIVER PARKWAY  
PARKWAY EXTENSION  
UTAH AND WASATCH COUNTIES  
LENGTH 4.420 MILES



THIS SEAL APPLIES TO ALL SHEETS  
CONTAINING THIS SIGNATURE

VERIFIED FOR SUBMISSION FOR ADVERTISEMENT

DESIGN ENGINEER

UTAH DEPARTMENT OF TRANSPORTATION  
APPROVED FOR USE BY UDOT

REGION THREE PRECONSTRUCTION ENGINEER

PROJECT NUMBER	S-0189(77)13	DATE	MM/DD/YY
PROJECT PATH	PROVO RIVER PARKWAY	APPROVED	DATE
PROJECT	UTAH DEPARTMENT OF TRANSPORTATION	CHECKED BY	MDP
		OC	DATE
		MDP	DATE

PROFESSIONAL ENGINEER  
 DATE  
 APPROVED  
 DATE  
 OC  
 DATE  
 MDP

UTAH DEPARTMENT OF TRANSPORTATION  
 HORROCKS ENGINEERS

PROVO RIVER PARKWAY  
 S-0189(77)13  
 PIN 14698

PROFESSIONAL ENGINEER  
 DATE  
 APPROVED  
 DATE  
 OC  
 DATE  
 MDP

UTAH DEPARTMENT OF TRANSPORTATION  
 HORROCKS ENGINEERS

PROVO RIVER PARKWAY  
 S-0189(77)13  
 PIN 14698

PROFESSIONAL ENGINEER  
 DATE  
 APPROVED  
 DATE  
 OC  
 DATE  
 MDP

UTAH DEPARTMENT OF TRANSPORTATION  
 HORROCKS ENGINEERS

PROVO RIVER PARKWAY  
 S-0189(77)13  
 PIN 14698

PROFESSIONAL ENGINEER  
 DATE  
 APPROVED  
 DATE  
 OC  
 DATE  
 MDP

UTAH DEPARTMENT OF TRANSPORTATION  
 HORROCKS ENGINEERS

PROVO RIVER PARKWAY  
 S-0189(77)13  
 PIN 14698

PROFESSIONAL ENGINEER  
 DATE  
 APPROVED  
 DATE  
 OC  
 DATE  
 MDP

UTAH DEPARTMENT OF TRANSPORTATION  
 HORROCKS ENGINEERS

PROVO RIVER PARKWAY  
 S-0189(77)13  
 PIN 14698

PROFESSIONAL ENGINEER  
 DATE  
 APPROVED  
 DATE  
 OC  
 DATE  
 MDP

UTAH DEPARTMENT OF TRANSPORTATION  
 HORROCKS ENGINEERS

PROVO RIVER PARKWAY  
 S-0189(77)13  
 PIN 14698

PROFESSIONAL ENGINEER  
 DATE  
 APPROVED  
 DATE  
 OC  
 DATE  
 MDP

UTAH DEPARTMENT OF TRANSPORTATION  
 HORROCKS ENGINEERS

PROVO RIVER PARKWAY  
 S-0189(77)13  
 PIN 14698

PROFESSIONAL ENGINEER  
 DATE  
 APPROVED  
 DATE  
 OC  
 DATE  
 MDP

UTAH DEPARTMENT OF TRANSPORTATION  
 HORROCKS ENGINEERS

PROVO RIVER PARKWAY  
 S-0189(77)13  
 PIN 14698

PROFESSIONAL ENGINEER  
 DATE  
 APPROVED  
 DATE  
 OC  
 DATE  
 MDP

UTAH DEPARTMENT OF TRANSPORTATION  
 HORROCKS ENGINEERS

PROVO RIVER PARKWAY  
 S-0189(77)13  
 PIN 14698

PROFESSIONAL ENGINEER  
 DATE  
 APPROVED  
 DATE  
 OC  
 DATE  
 MDP

UTAH DEPARTMENT OF TRANSPORTATION  
 HORROCKS ENGINEERS

PROVO RIVER PARKWAY  
 S-0189(77)13  
 PIN 14698

PROFESSIONAL ENGINEER  
 DATE  
 APPROVED  
 DATE  
 OC  
 DATE  
 MDP

UTAH DEPARTMENT OF TRANSPORTATION  
 HORROCKS ENGINEERS

PROVO RIVER PARKWAY  
 S-0189(77)13  
 PIN 14698

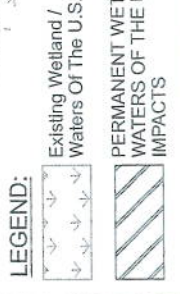
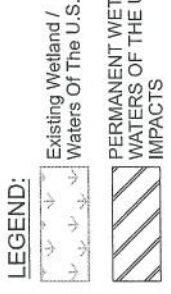
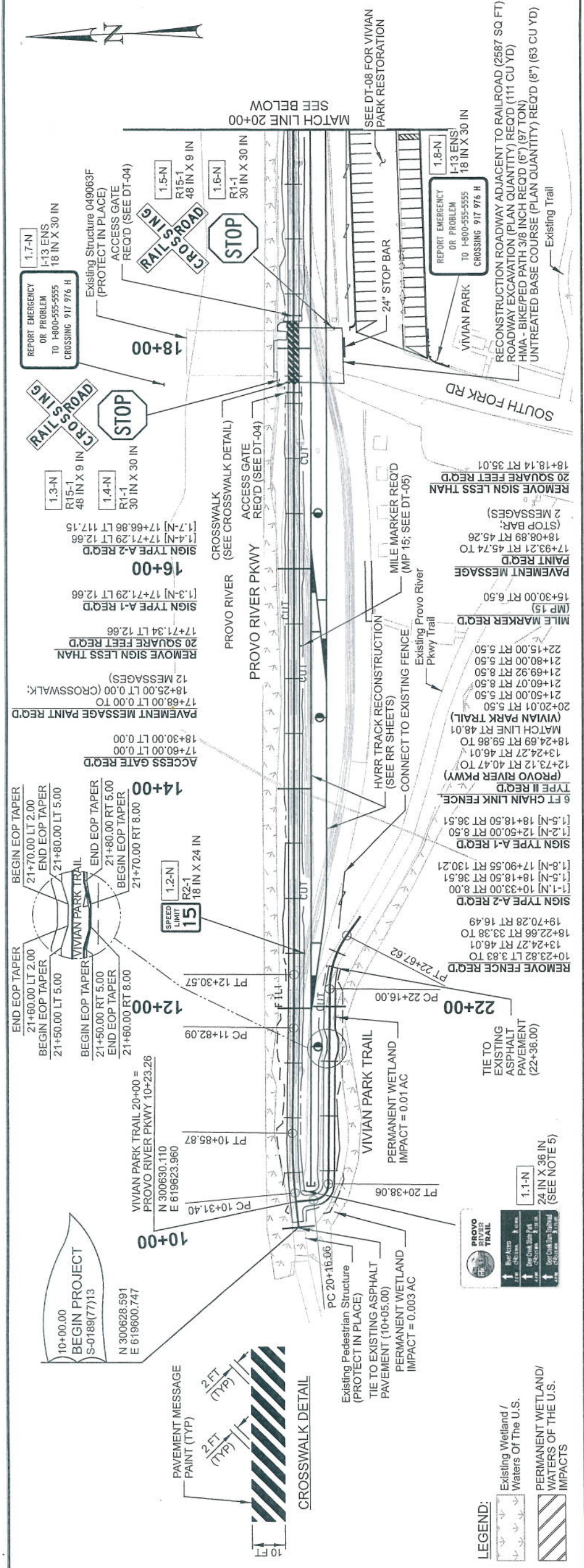
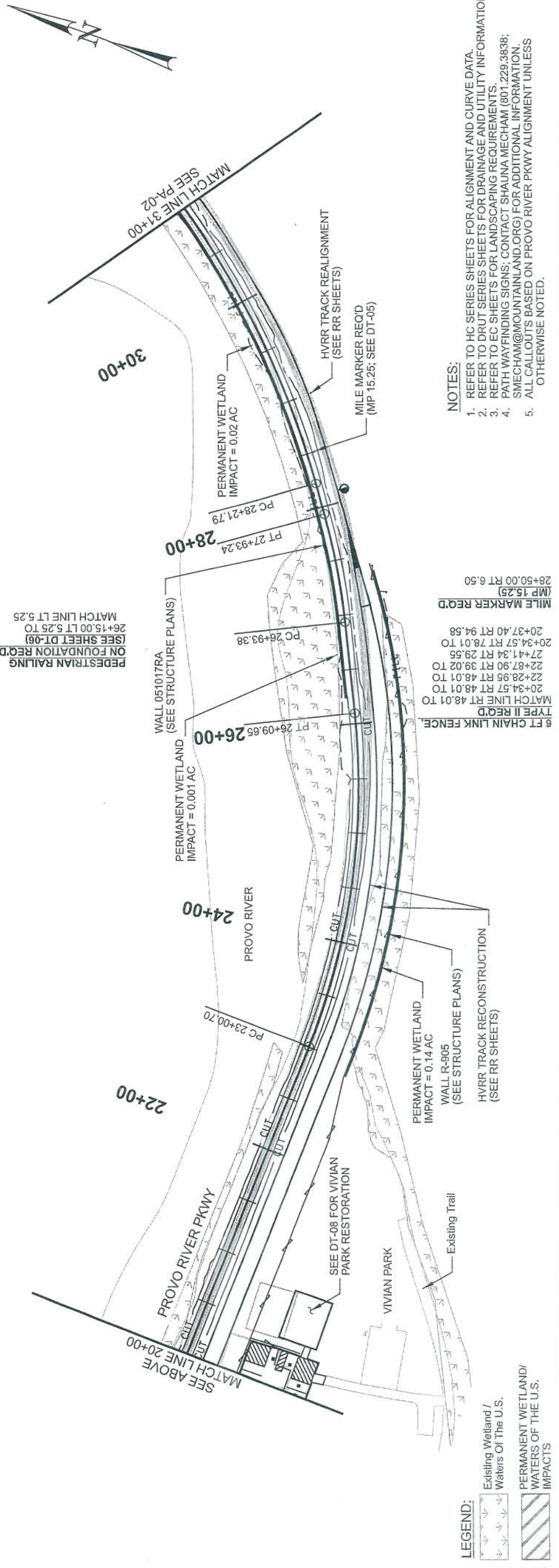
PROFESSIONAL ENGINEER  
 DATE  
 APPROVED  
 DATE  
 OC  
 DATE  
 MDP

UTAH DEPARTMENT OF TRANSPORTATION  
 HORROCKS ENGINEERS

PROVO RIVER PARKWAY  
 S-0189(77)13  
 PIN 14698

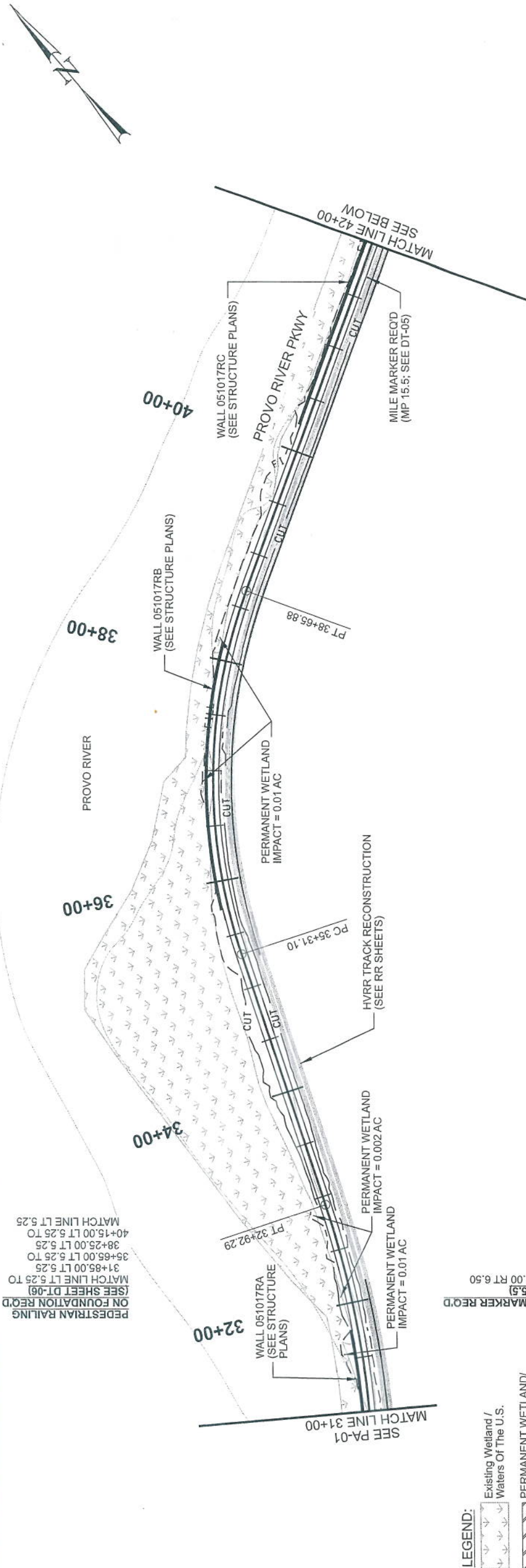
PROFESSIONAL ENGINEER  
 DATE  
 APPROVED  
 DATE  
 OC  
 DATE  
 MDP

- NOTES:
1. REFER TO HC SERIES SHEETS FOR ALIGNMENT AND CURVE DATA.
  2. REFER TO DRUT SERIES SHEETS FOR DRAINAGE AND UTILITY INFORMATION.
  3. REFER TO EC SHEETS FOR LANDSCAPING REQUIREMENTS.
  4. PATH WAYFINDING SIGNS; CONTACT SHAUNA MECHAM (801.229.3838; SMECHAM@MOUNTAINLAND.ORG) FOR ADDITIONAL INFORMATION.
  5. ALL CALLOUTS BASED ON PROVO RIVER PKWY ALIGNMENT UNLESS OTHERWISE NOTED.

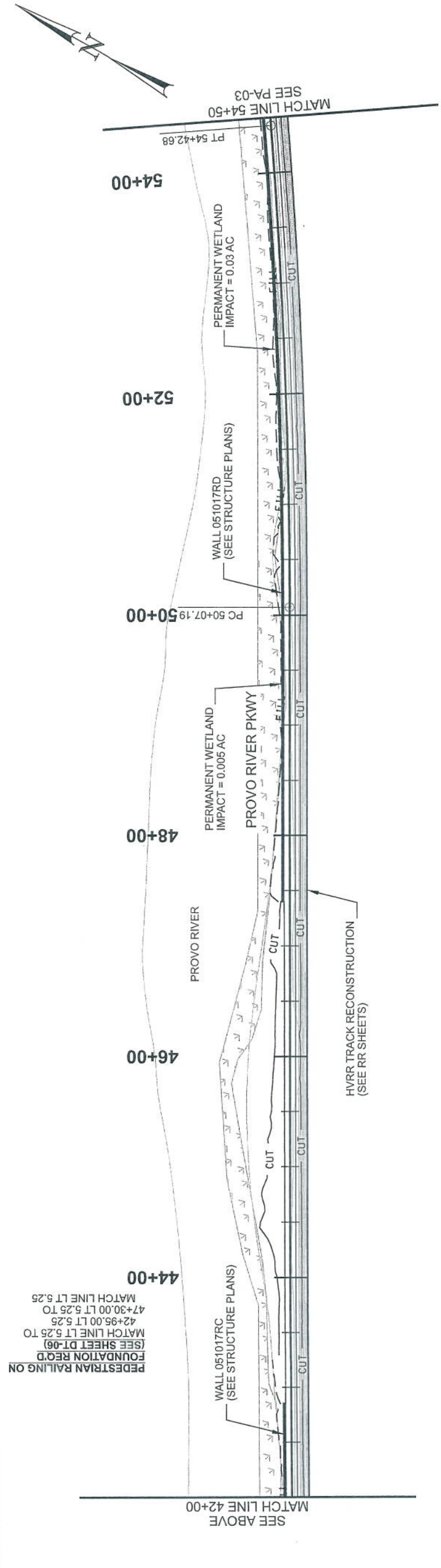


**PRELIMINARY**

NOT FOR CONSTRUCTION  
 PS&E DATE: 10/31/22

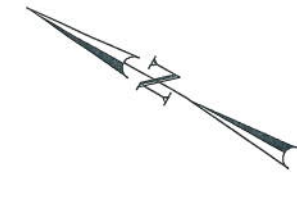


PEDESTRIAN RAILING ON FOUNDATION REQ'D (SEE SHEET DT-06)  
MATCH LINE LT 5.25 TO 31+85.00 LT 5.25  
31+85.00 LT 5.25  
35+65.00 LT 5.25 TO 38+25.00 LT 5.25  
38+25.00 LT 5.25 TO 40+15.00 LT 5.25 TO MATCH LINE LT 5.25



PEDESTRIAN RAILING ON FOUNDATION REQ'D (SEE SHEET DT-06)  
MATCH LINE LT 5.25 TO 42+95.00 LT 5.25  
42+95.00 LT 5.25 TO 47+30.00 LT 5.25 TO MATCH LINE LT 5.25

- NOTES:
1. REFER TO HC SERIES SHEETS FOR ALIGNMENT AND CURVE DATA.
  2. REFER TO DRUT SERIES SHEETS FOR DRAINAGE AND UTILITY INFORMATION.
  3. REFER TO EC SHEETS FOR LANDSCAPING REQUIREMENTS.

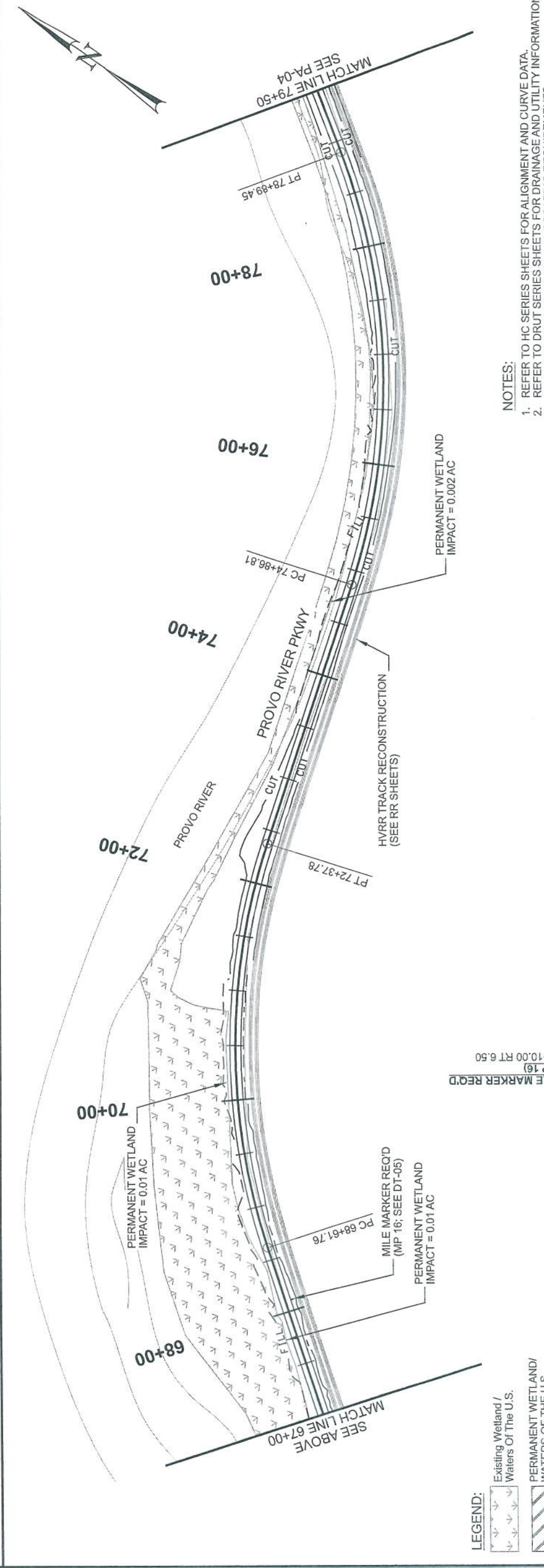
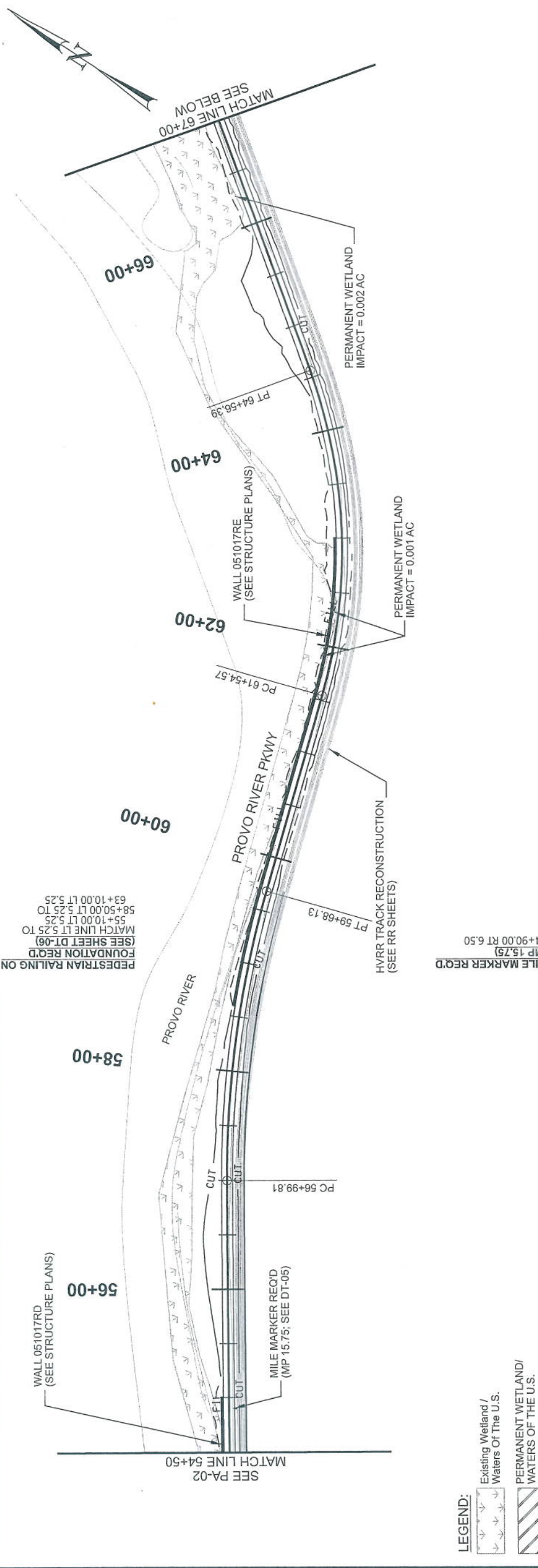


PROJECT NUMBER	S-0189(77)13
PROJECT	PROVO RIVER PARKWAY

APPROVED	DATE	PROFESSIONAL ENGINEER
DRAWN BY	MM/DD/YY	
CHECKED BY		
MDP		

UTAH DEPARTMENT OF TRANSPORTATION  
HORROCKS ENGINEERS

**PRELIMINARY**  
NOT FOR CONSTRUCTION  
PS&E DATE: 10/31/22

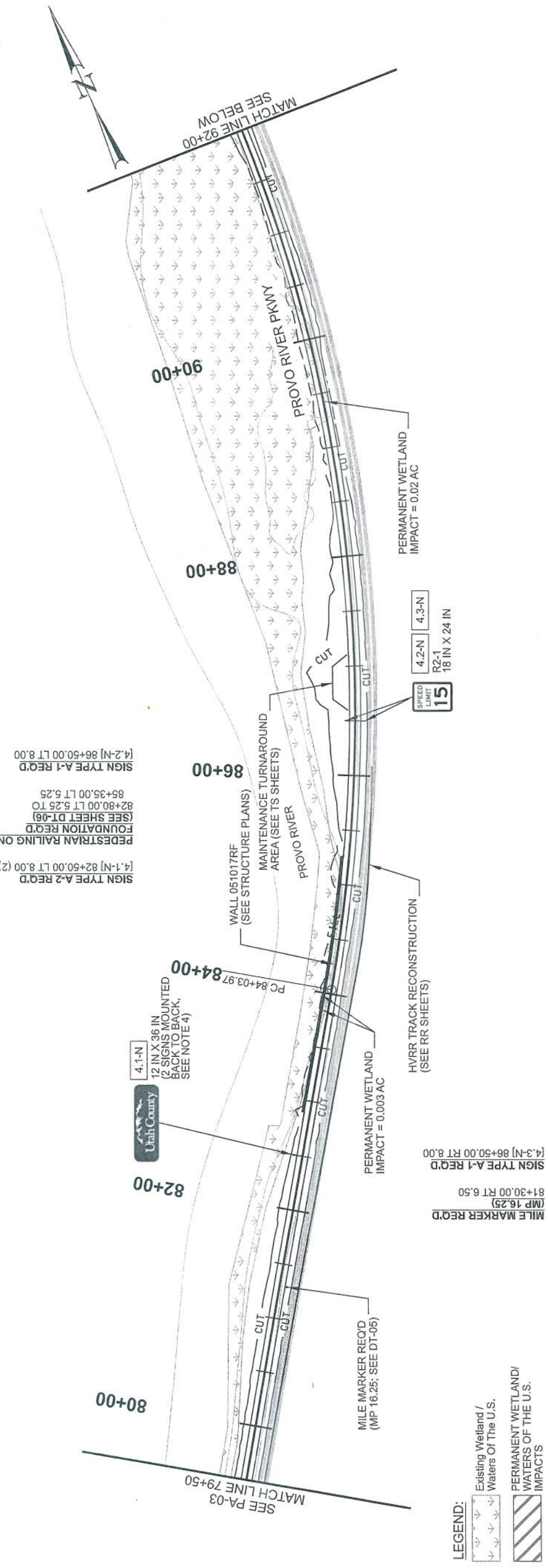


**NOTES:**  
 1. REFER TO HC SERIES SHEETS FOR ALIGNMENT AND CURVE DATA.  
 2. REFER TO DRUT SERIES SHEETS FOR DRAINAGE AND UTILITY INFORMATION.  
 3. REFER TO EC SHEETS FOR LANDSCAPING REQUIREMENTS.

**LEGEND:**  
 Existing Wetland / Waters Of The U.S.  
 PERMANENT WETLAND/ WATERS OF THE U.S. IMPACTS

**LEGEND:**  
 Existing Wetland / Waters Of The U.S.  
 PERMANENT WETLAND/ WATERS OF THE U.S. IMPACTS

NOTES:  
1. REFER TO HC SERIES SHEETS FOR ALIGNMENT AND CURVE DATA.  
2. REFER TO DRUT SERIES SHEETS FOR DRAINAGE AND UTILITY INFORMATION.  
3. REFER TO EC SHEETS FOR LANDSCAPING REQUIREMENTS.

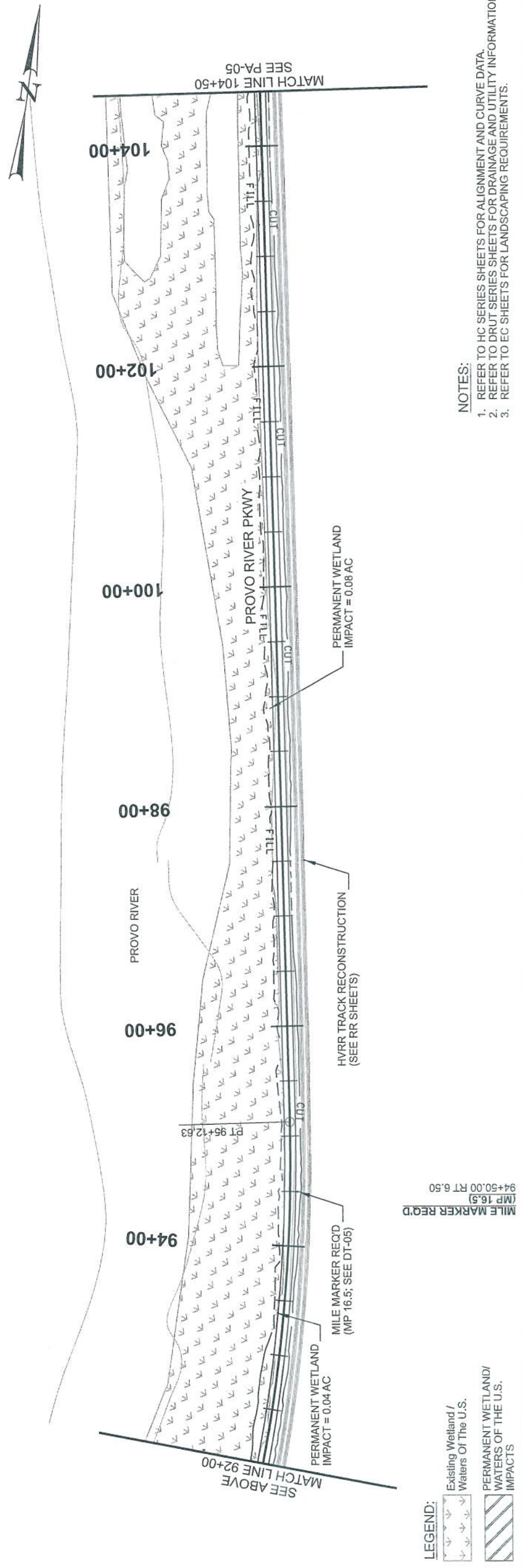


SIGN TYPE A-1 REQ'D  
[4.1-N] 82+50.00 LT 8.00 (2)  
PEDESTRIAN RAILING ON  
FOUNDATION REQ'D  
(SEE SHEET DT-06)  
82+80.00 LT 5.26 TO  
85+35.00 LT 5.25  
SIGN TYPE A-1 REQ'D  
[4.2-N] 86+50.00 LT 8.00

4.1-N  
12 IN X 36 IN  
12 SIGNS MOUNTED  
BACK TO BACK,  
SEE NOTE 4)



LEGEND:  
Existing Wetland /  
Waters Of The U.S.  
PERMANENT WETLAND/  
WATERS OF THE U.S.  
IMPACTS



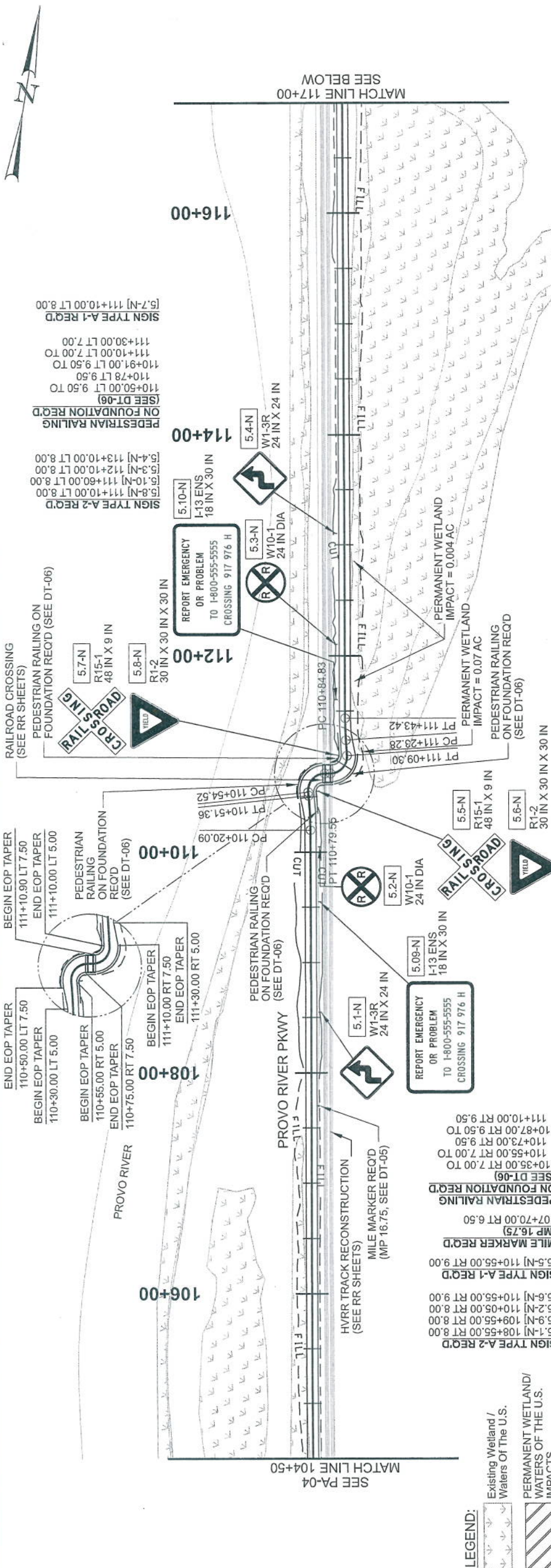
MILE MARKER REQ'D  
(MP 16.5)  
94+50.00 RT 6.50

LEGEND:  
Existing Wetland /  
Waters Of The U.S.  
PERMANENT WETLAND/  
WATERS OF THE U.S.  
IMPACTS

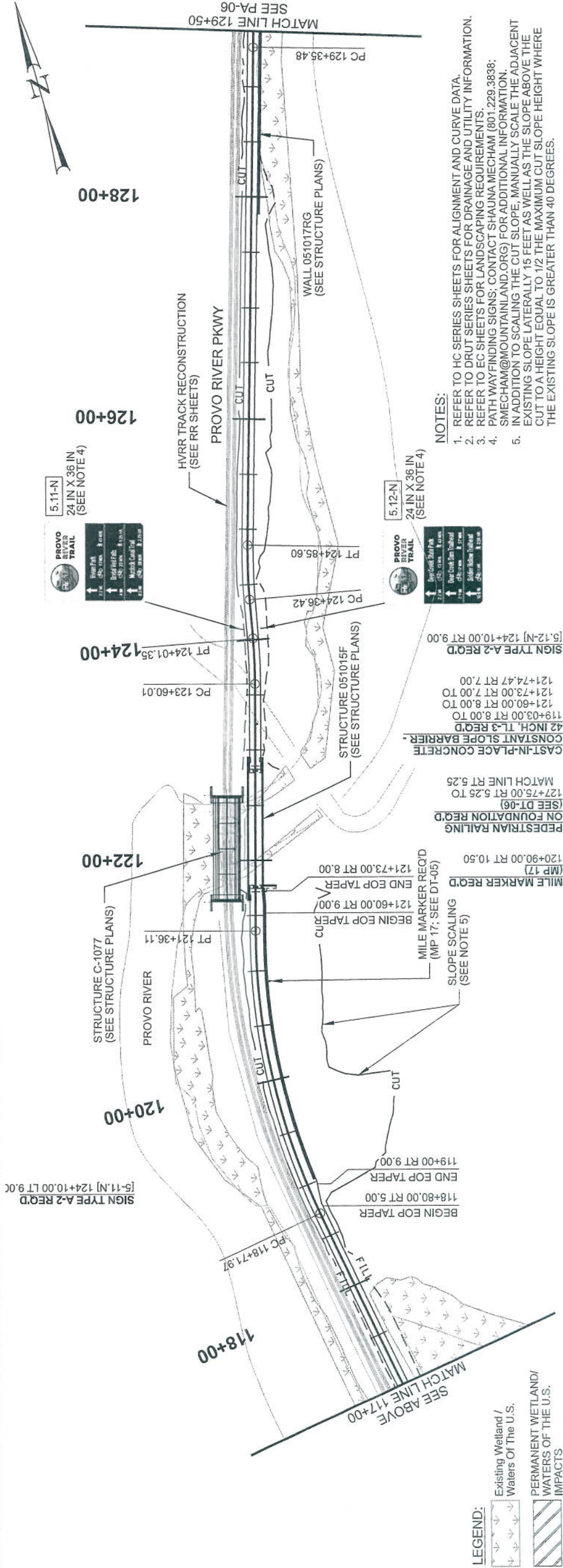
PROJECT	PROVO RIVER
PROJECT NUMBER	S-0189(77)13
PN	14698
PATH	

UTAH DEPARTMENT OF TRANSPORTATION		APPROVED	PROFESSIONAL ENGINEER
DATE	MM/DD/YY	QC	CHECKED BY
		MDP	
DRAWN BY		BLA	

**PRELIMINARY**  
NOT FOR CONSTRUCTION  
PS&E DATE: 10/31/22



**LEGEND:**  
 Existing Wetland / Waters of The U.S.  
 PERMANENT WETLAND/ WATERS OF THE U.S. IMPACTS



**LEGEND:**  
 Existing Wetland / Waters of The U.S.  
 PERMANENT WETLAND/ WATERS OF THE U.S. IMPACTS

- NOTES:**
1. REFER TO HC SERIES SHEETS FOR ALIGNMENT AND CURVE DATA.
  2. REFER TO DRUT SERIES SHEETS FOR DRAINAGE AND UTILITY INFORMATION.
  3. REFER TO EC SHEETS FOR LANDSCAPING REQUIREMENTS.
  4. PATH WAYFINDING SIGNS; CONTACT SHAUNA MECHEM (801.229.3838; SMECHAM@MOUNTAINLAND.ORG) FOR ADDITIONAL INFORMATION. IN ADDITION TO SCALING THE CUT SLOPE, MANUALLY SCALE THE ADJACENT EXISTING SLOPE LATERALLY 15 FEET AS WELL AS THE SLOPE ABOVE THE CUT TO A HEIGHT EQUAL TO 1/2 THE MAXIMUM CUT SLOPE HEIGHT WHERE THE EXISTING SLOPE IS GREATER THAN 40 DEGREES.



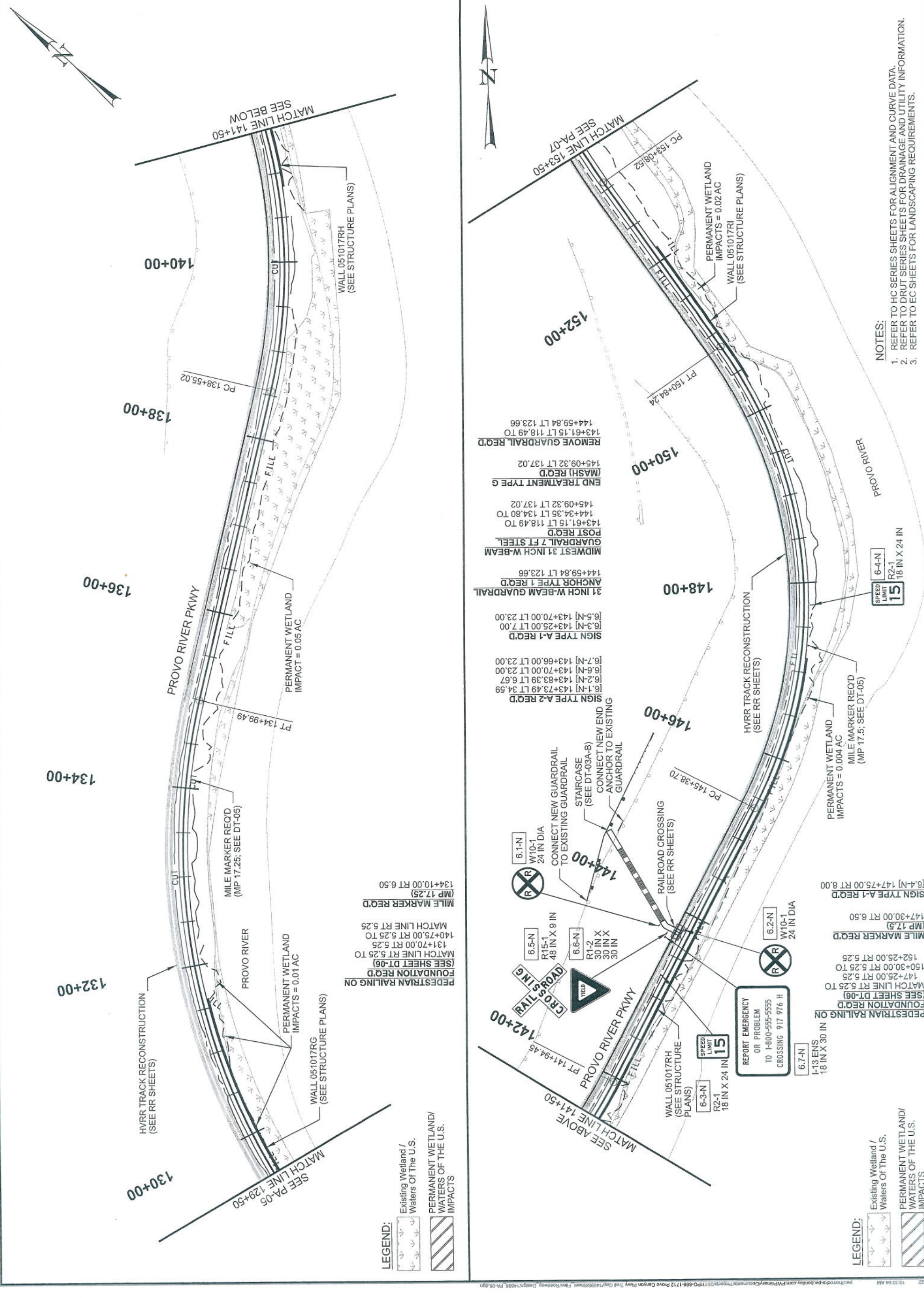


PROJECT: PROVO RIVER PARKWAY  
 PROJECT NUMBER: S-0189(77)13  
 PATH: 14698

UTAH DEPARTMENT OF TRANSPORTATION  
 HORROCKS ENGINEERS  
 APPROVED: [Signature]  
 DATE: [Blank]  
 MM/DD/YY: [Blank]  
 DRAWN BY: [Blank]  
 CHECKED BY: [Blank]  
 RDR: [Blank]

PRELIMINARY  
 NOT FOR CONSTRUCTION  
 PS&E DATE: 10/31/22

NOTES:  
 1. REFER TO HC SERIES SHEETS FOR ALIGNMENT AND CURVE DATA.  
 2. REFER TO DRUT SERIES SHEETS FOR DRAINAGE AND UTILITY INFORMATION.  
 3. REFER TO EC SHEETS FOR LANDSCAPING REQUIREMENTS.



LEGEND:

- Existing Wetland / Waters Of The U.S.
- PERMANENT WETLAND / WATERS OF THE U.S. IMPACTS

LEGEND:

- Existing Wetland / Waters Of The U.S.
- PERMANENT WETLAND / WATERS OF THE U.S. IMPACTS

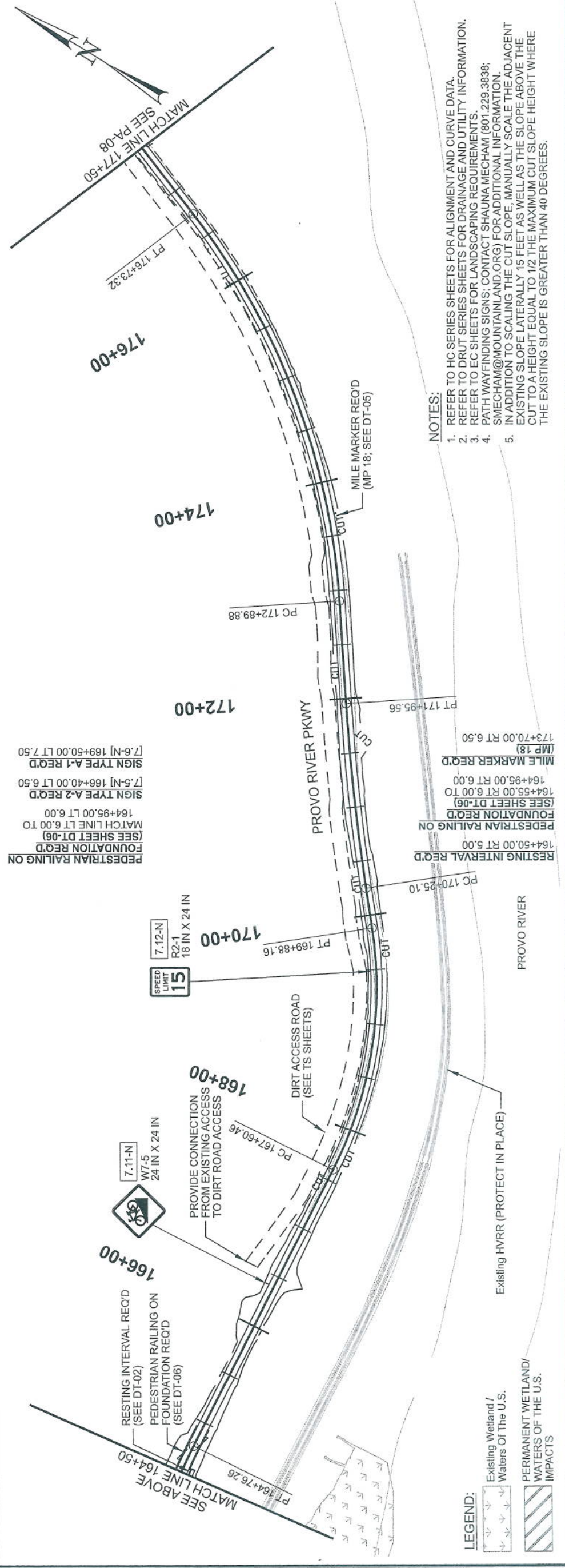
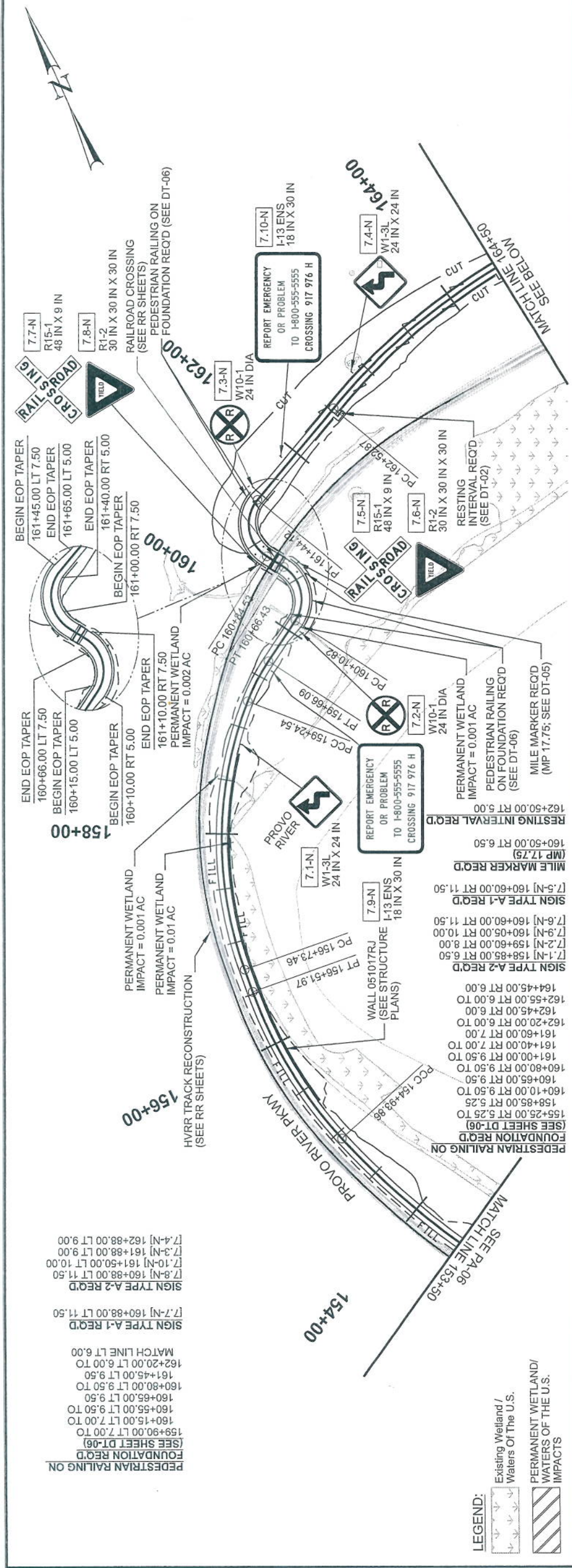


PROJECT NUMBER S-0189(77)13	PROJECT PROVO RIVER PARKWAY	DATE MM/DD/YY	CHECKED BY RDR	APPROVED	PROFESSIONAL ENGINEER
PROJECT PROVO RIVER PARKWAY	PROJECT S-0189(77)13	DATE MM/DD/YY	CHECKED BY RDR	APPROVED	PROFESSIONAL ENGINEER
UTAH DEPARTMENT OF TRANSPORTATION HORROCKS ENGINEERS			DRAWN BY BLA	QC RDR	

**PRELIMINARY**

NOT FOR CONSTRUCTION  
PS&E DATE: 10/31/22

SHEET NO. PA-07

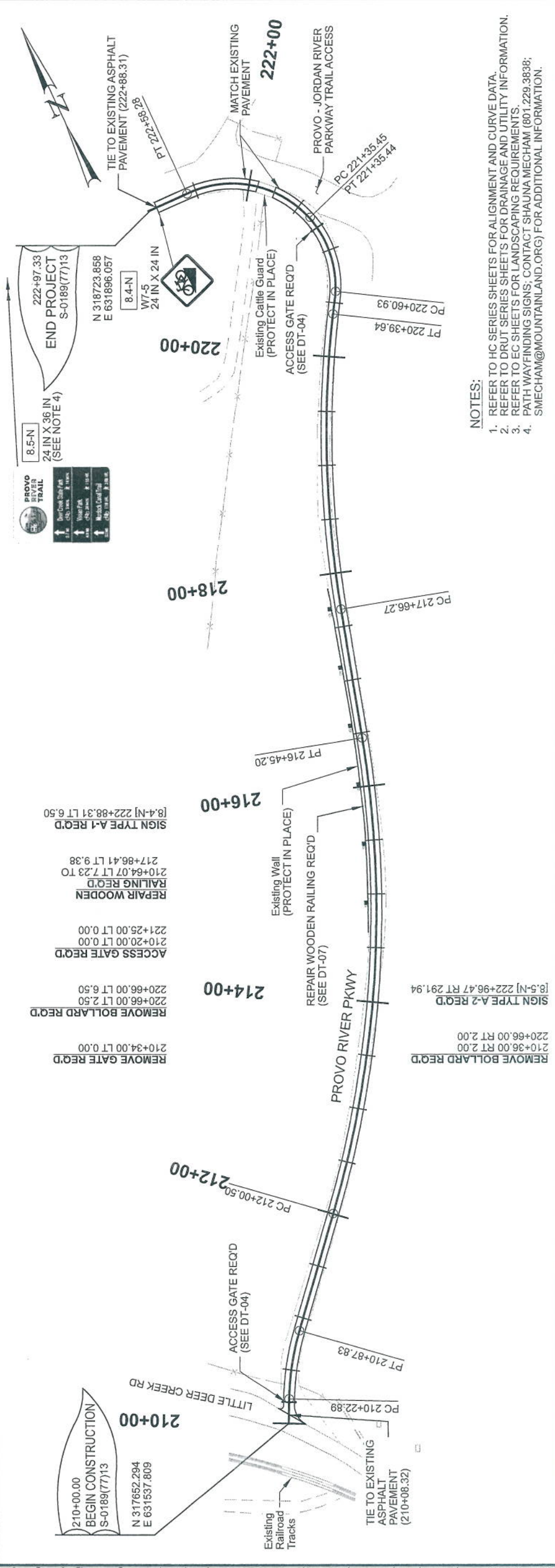


- NOTES:**
- REFER TO HC SERIES SHEETS FOR ALIGNMENT AND CURVE DATA.
  - REFER TO DRUT SERIES SHEETS FOR DRAINAGE AND UTILITY INFORMATION.
  - REFER TO EC SHEETS FOR LANDSCAPING REQUIREMENTS.
  - PATH WAYFINDING SIGNS; CONTACT SHAUNA MECHAM (801.229.3838; SMECHAM@MOUNTAINLAND.ORG) FOR ADDITIONAL INFORMATION.
  - IN ADDITION TO SCALING THE CUT SLOPE, MANUALLY SCALE THE ADJACENT EXISTING SLOPE LATERALLY 15 FEET AS WELL AS THE SLOPE ABOVE THE CUT TO A HEIGHT EQUAL TO 1/2 THE MAXIMUM CUT SLOPE HEIGHT WHERE THE EXISTING SLOPE IS GREATER THAN 40 DEGREES.

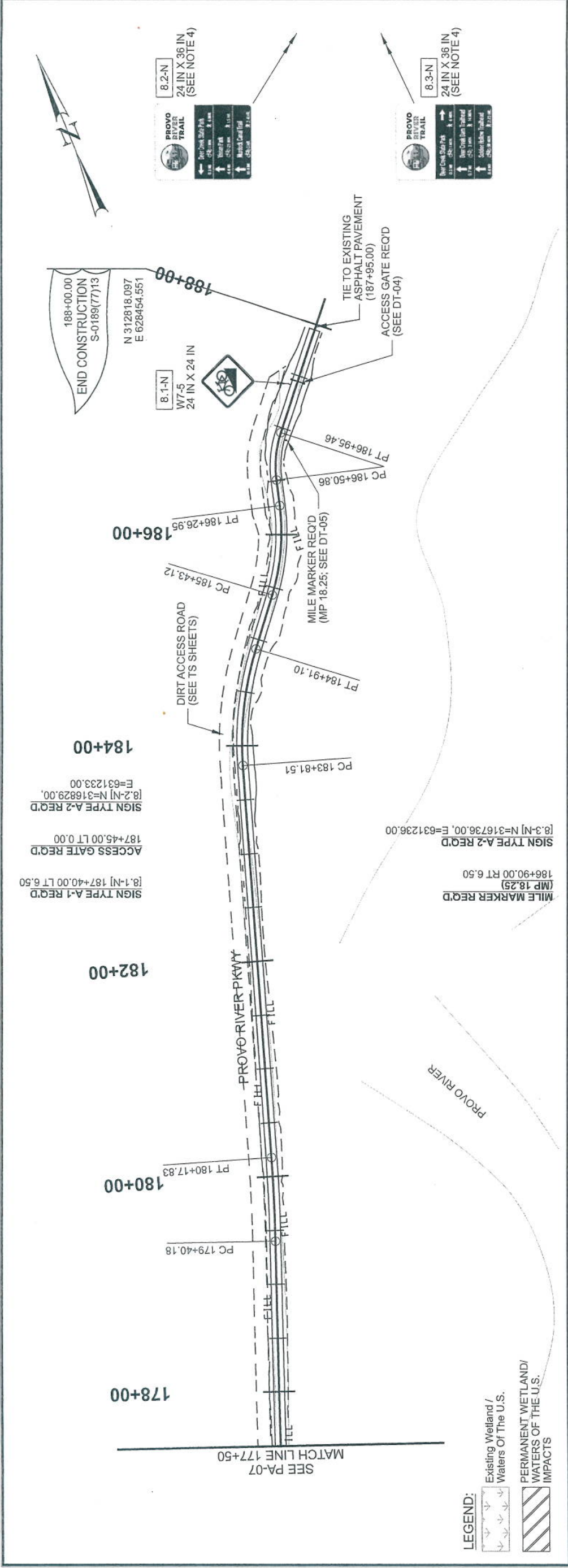
PROJECT NUMBER	S-0189(77)13	PATH
PROJECT	PROVO RIVER PARKWAY	
APPROVED	14698	
DATE	MM/DD/YY	PROFESSIONAL ENGINEER
CHECKED BY	OC	
DRAWN BY	BLA	
MDP		

UTAH DEPARTMENT OF TRANSPORTATION  
HORROCKS ENGINEERS

**PRELIMINARY**  
NOT FOR CONSTRUCTION  
PS&E DATE: 10/31/22



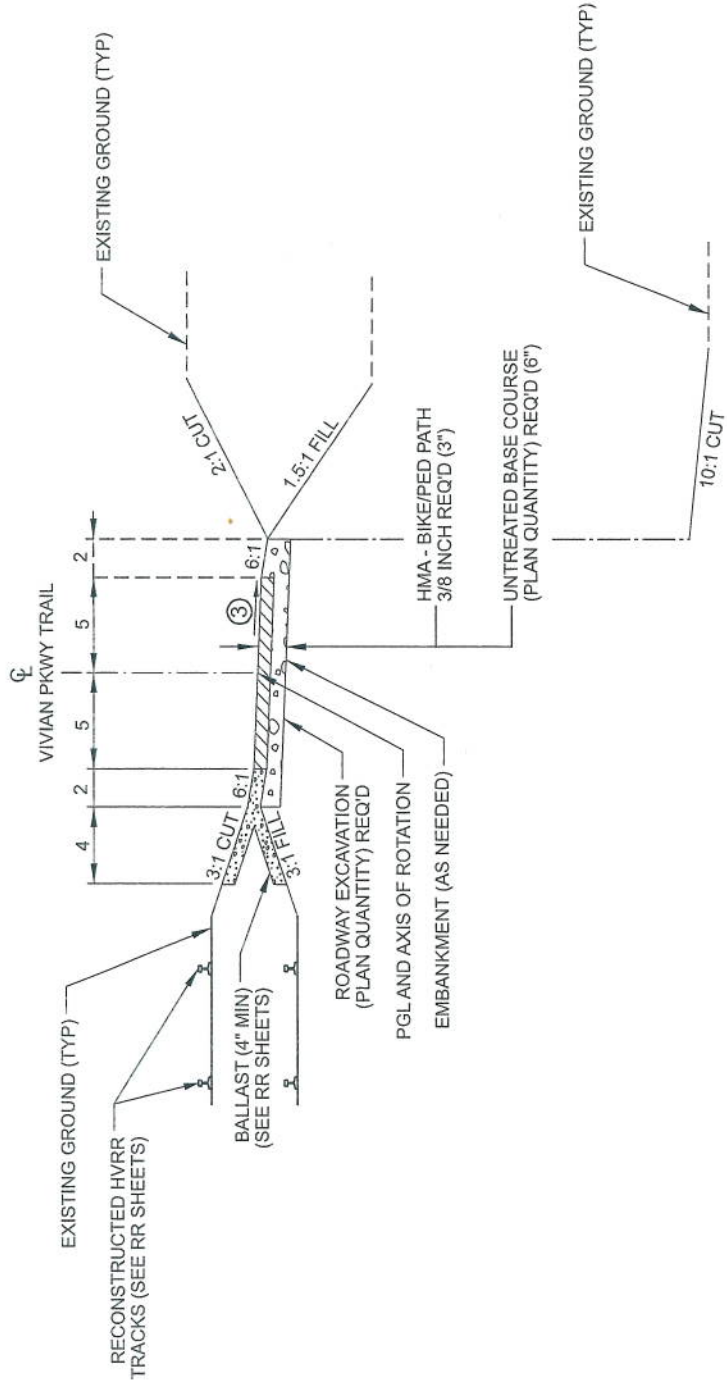
- NOTES:**
1. REFER TO HC SERIES SHEETS FOR ALIGNMENT AND CURVE DATA.
  2. REFER TO DRUT SERIES SHEETS FOR DRAINAGE AND UTILITY INFORMATION.
  3. REFER TO EC SHEETS FOR LANDSCAPING REQUIREMENTS.
  4. PATH WAYFINDING SIGNS; CONTACT SHAUNA MECHAM (801.229.3838; SMECHAM@MOUNTAINLAND.ORG) FOR ADDITIONAL INFORMATION.



**LEGEND:**

	Existing Wetland / Waters of The U.S.
	PERMANENT WETLAND / WATERS OF THE U.S. IMPACTS

**SIDE TREATMENT LT**  
20+05.00 TO 22+36.00



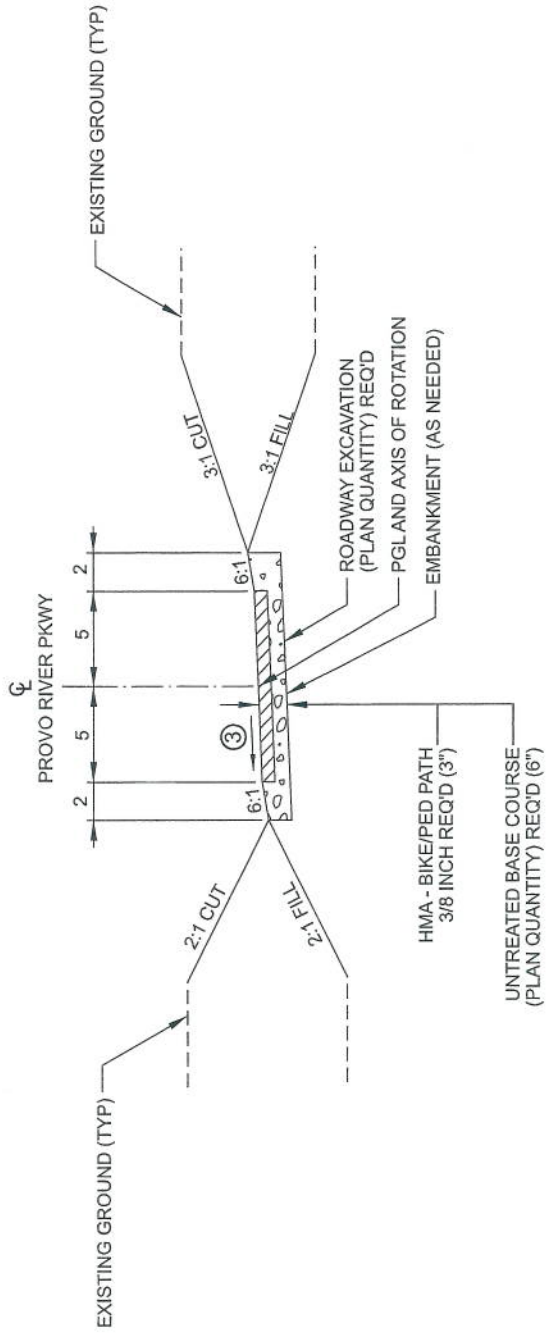
**SIDE TREATMENT LT 1**  
20+05.00 TO 20+50.00  
21+40.00 TO 22+36.00

**SIDE TREATMENT LT 2**  
20+50.00 TO 21+40.00

**TYPICAL SECTION 1**

**VIVIAN PARK TRAIL**

20+05.00 TO 22+36.00  
DESIGN SPEED 20 MPH  
LATERAL OFFSET TO OBSTRUCTION 2 FT



**TYPICAL SECTION 2**

**PROVO RIVER PKWY**

10+05.00 TO 10+36.00  
DESIGN SPEED 20 MPH  
LATERAL OFFSET TO OBSTRUCTION 2 FT

- NOTES:
1. STRIP AND STOCKPILE THE EXISTING TOPSOIL AND NATIVE MATERIAL TO A MINIMUM DEPTH OF 4" PRIOR TO PATH (PLAN QUANTITY) REQ'D ON ALL DISTURBED AREAS TO BE SEED'D, AT A 4" MINIMUM THICKNESS. SEED REQ'D ON ALL DISTURBED AREAS PER SECTION 02922M. SEE EC SHEETS.
  2. SEE PA SHEETS FOR PATH ELEMENTS AND TRANSITIONS.
  3. SEE PP SHEETS FOR CROSS SLOPE AND SUPER ELEVATIONS
  4. SEE RR SHEETS FOR RAILROAD INFORMATION

**PRELIMINARY**  
NOT FOR CONSTRUCTION  
PS&E DATE: 10/31/22

UTAH DEPARTMENT OF TRANSPORTATION HORROCKS ENGINEERS		APPROVED	DATE	PROFESSIONAL ENGINEER
BLA	DRAWN BY	QC	MM/DD/YY	CHECKED BY
				RDR

PROJECT	PROVO RIVER PARKWAY	PROJECT NUMBER	S-0189(77)13	TYPICAL SECTION
		PIN	14698	