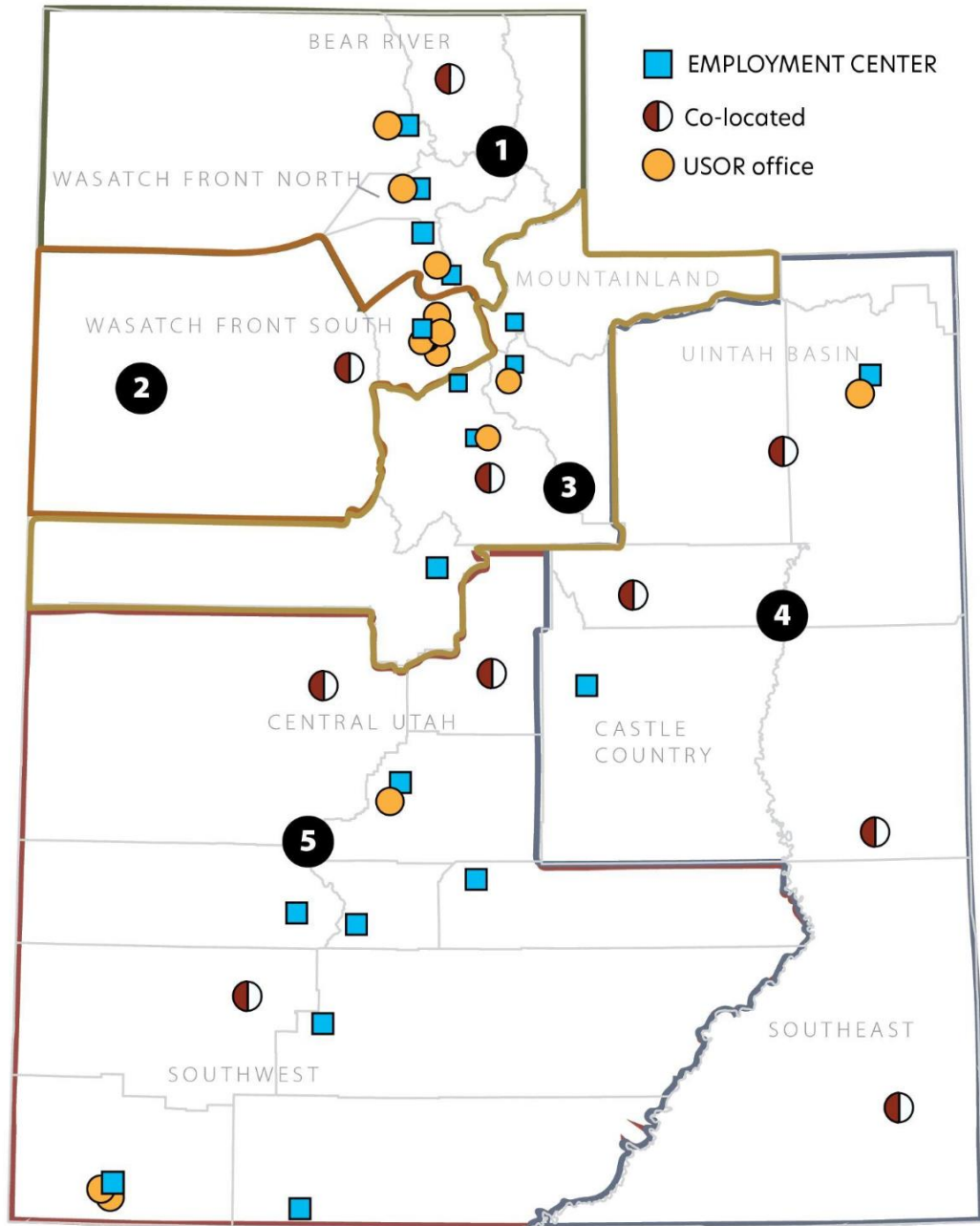




DEPARTMENT OF
**Workforce
Services**

Workforce Development Programs



Workforce Development Division.

- 31 American Job Centers
- All services under one roof



Labor Exchange Services ●

- Served almost 1 in 5 Utah employers (20,613)
- 725,590 job seekers received at least one labor exchange service
- 225,388 job seekers receiving at least one service obtained employment
- 21.5% of Utahns accessed labor exchange services



Individualized Case Management●



**HIGH SCHOOL DIPLOMA OR
GED**



**COLLEGE
DEGREE**



**LICENSING &
CERTIFICATION**



**WORK EXPERIENCE
OPPORTUNITIES**



APPRENTICESHIP



REJOINING THE WORKFORCE



Individualized Case Management

FY 2022:

Average amount of time on FEP was

5-7 months



75%

of participants closed with a positive closure

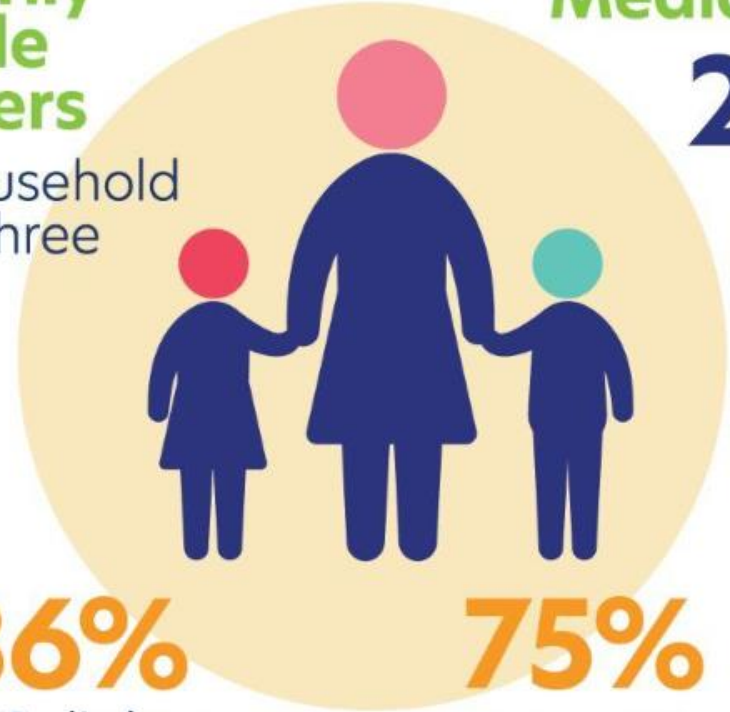
DEMOGRAPHICS:

Primarily single mothers

median household size of three

Median age

27



36%

no HS diploma

75%

no post-secondary education



Workforce Win.

<https://www.youtube.com/watch?app=desktop&v=N8TUK7kq7ZA>





DEPARTMENT OF
**WORKFORCE
SERVICES**

