

School Safety & Security — Best Practices, Design & Recommendations

August 7, 2023

School Security Task Force

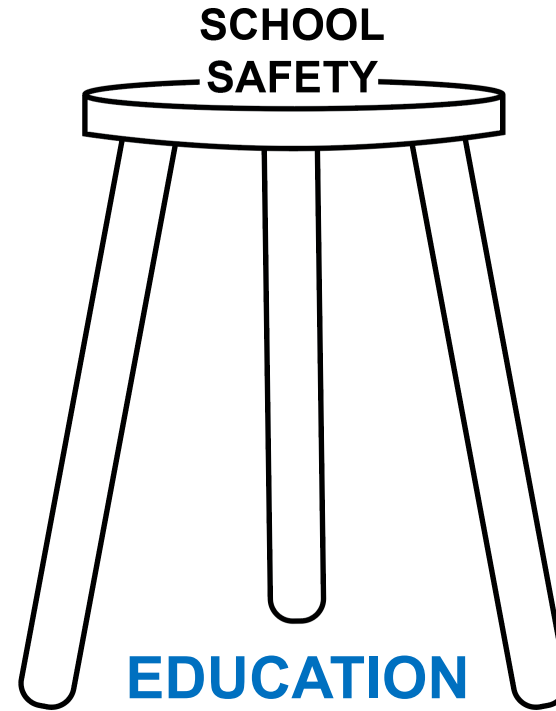
Lance Everill, Emergency Operations Manager

Jordan School District



Best Practices

The 3 E's



ENGINEERING

ENFORCEMENT

Can be applied regardless of budget, scope, or location.
Prepare for multi-hazards, internal and external issues/threats.

Engineering supports safety & security, doesn't eliminate all risks

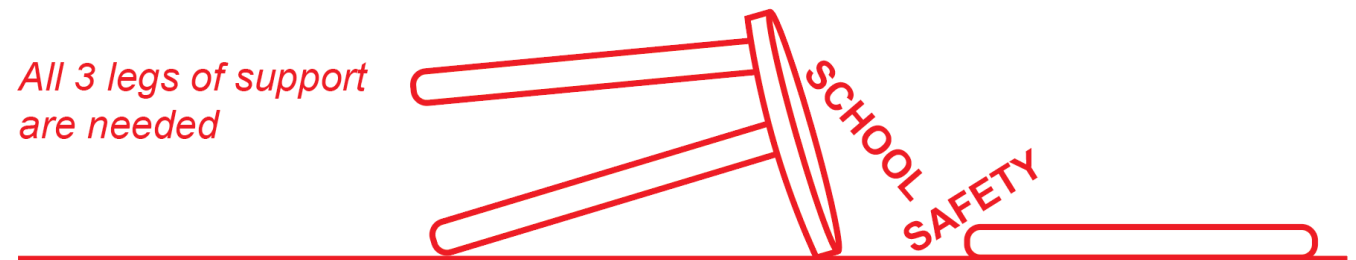
- Designs
- Programs, protocols
- Plans
- Equipment
- Systems
- Buildings, construction, renovation

Education “WHY”, purpose & expectations, create buy-in

- Who
- What
- When
- How
- Training, drills

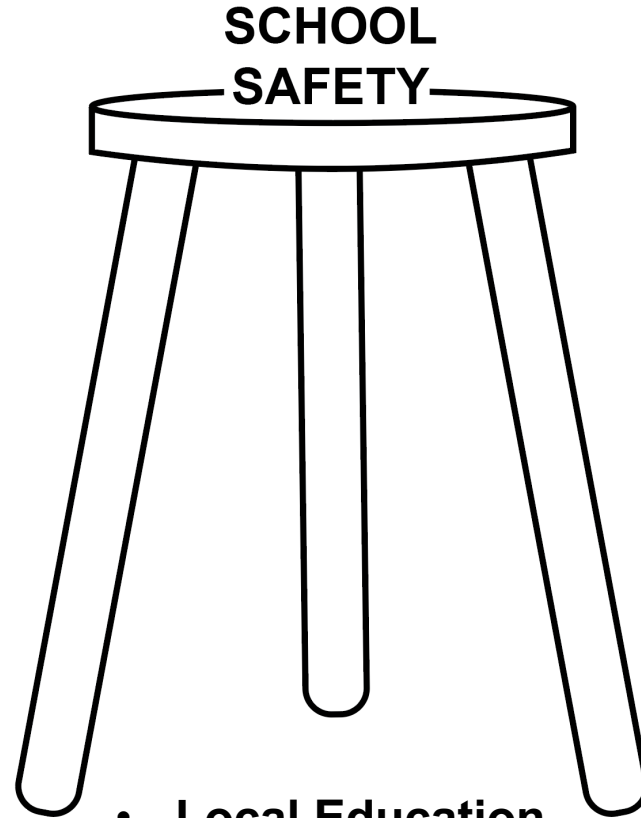
Enforcement

- Rules, policies & laws
- Consequences
- Assessments, follow-up
- Accountability



Best Practices

Support Systems



- Community
- Parents/Guardians
- Partners
- Consultants
- Architects
- Engineers

- **Local Education Agency (LEA)**
- **Schools**
- **Students**
- **Staff**

- Police
- Fire/EMS
- City/State/Federal
- Emergency Management

Best Practices

Layers & Filters

Layers and filters slowdown and sort people and things

- Create barriers to immediate access
- Provide **time**
- Process, verify
- **Take action**
- **Get help**

Layers

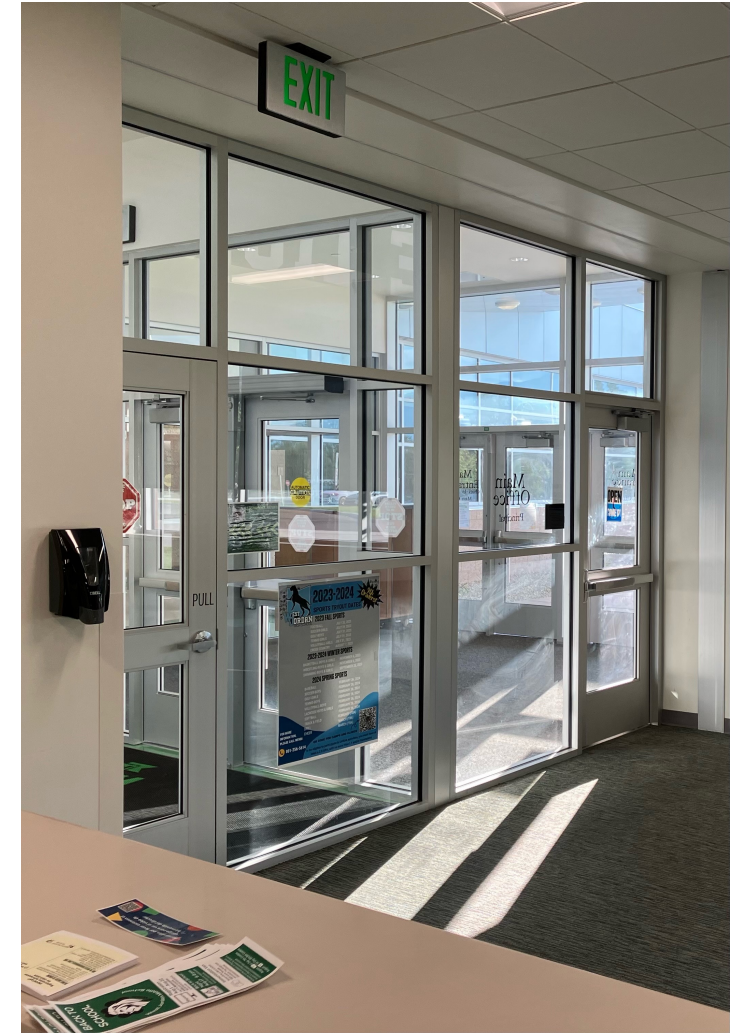
- Fences
- Doors, locks
- Access control – schedules, cards, fobs, codes
- Single-point **public** entrance
- Security doors, fortified public entrance
- Buzz-in systems
- Staff presence
- Check-in/identification process/vetting

Filters

- Who are they
- What is their business
- Authorization to proceed to certain areas

Best Practices

Visibility Outside & Inside



Clear visibility and good lighting

Best Practices

Visibility Outside & Inside



Maintain vegetation for security and pest control

Best Practices

Visitor Notifications, Door Access Control



Visitor notifications, ID access cards, card readers, door schedules, override

Best Practices

Single-point, Visitor Entrance

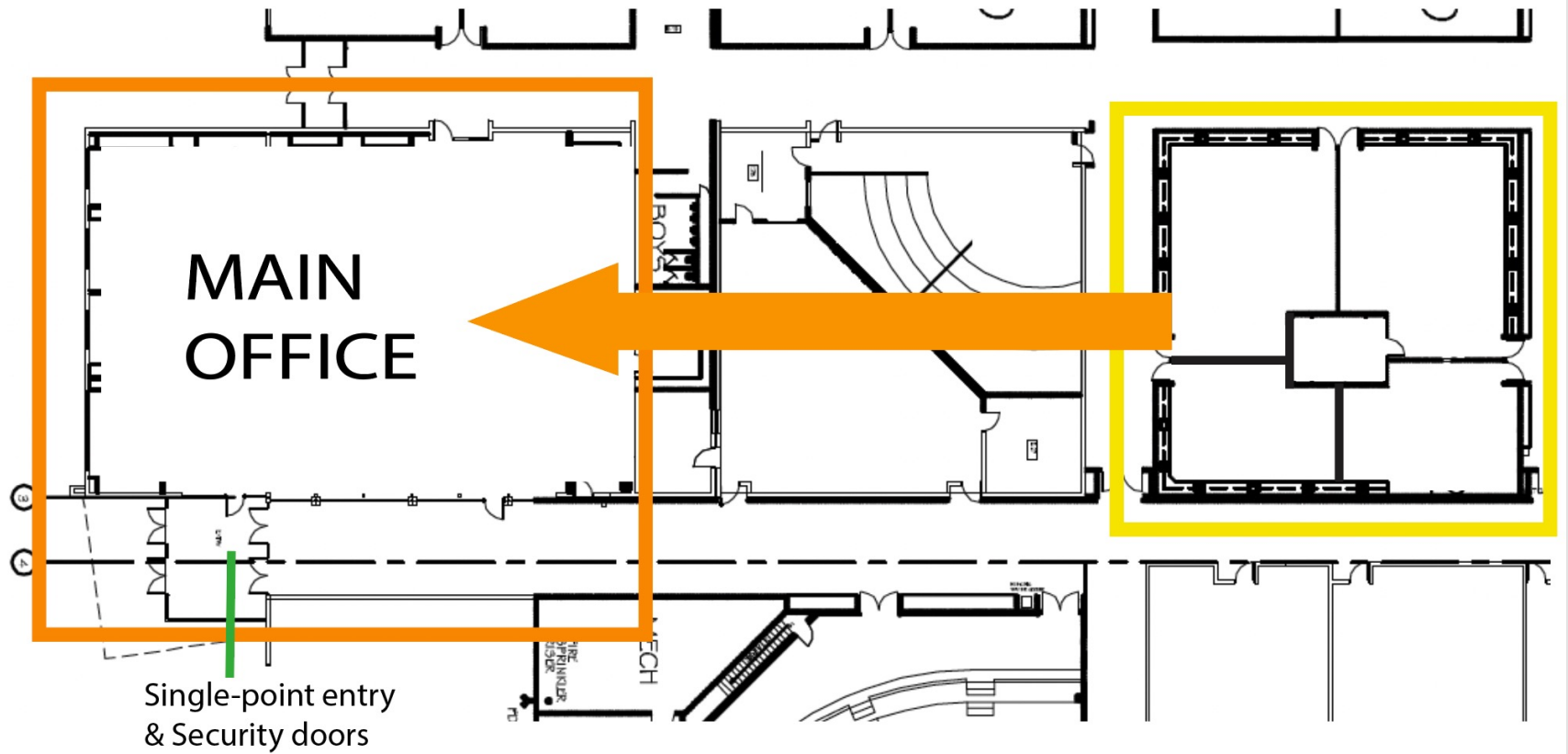


Security doors
No immediate access into school
Keep exterior doors locked
Buzz-in camera & intercom
Main office interface



Best Practices

Move Main Office to Front Entrance



Move main office to front of building
Single-point public entrance
Security doors

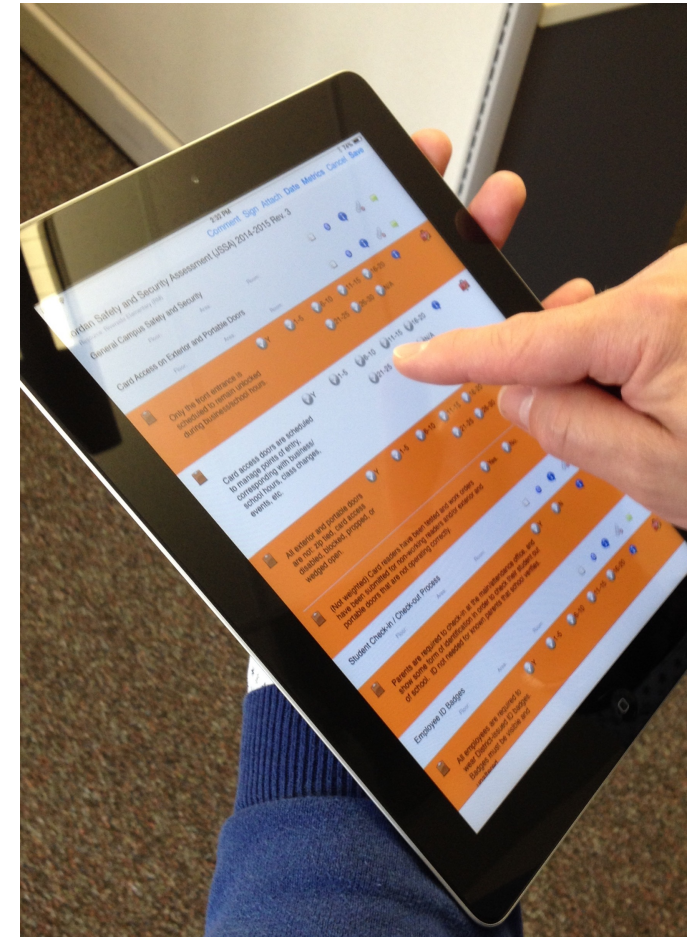
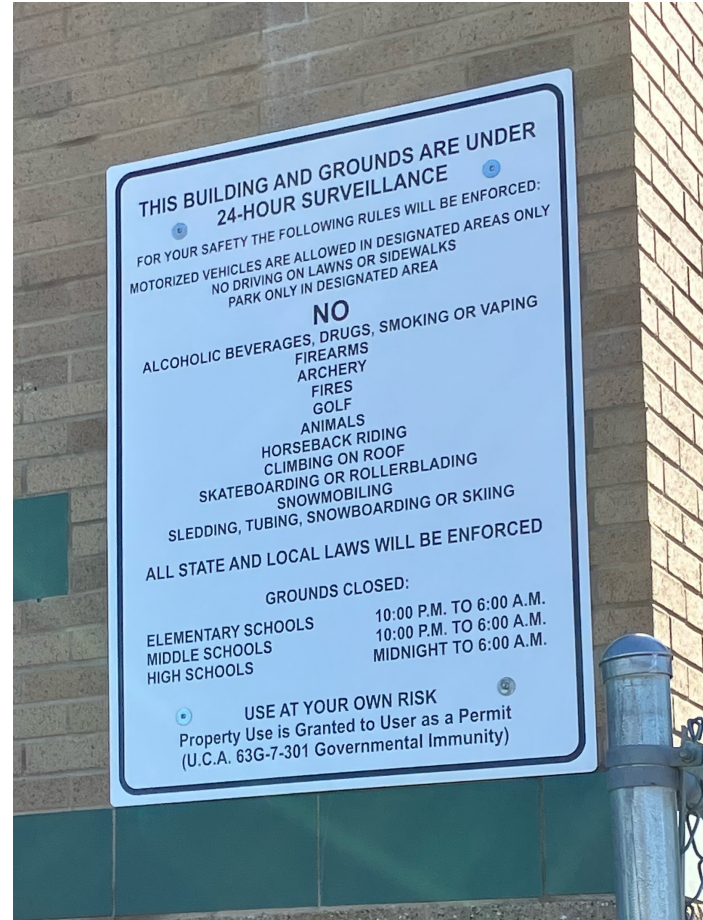
Best Practices

Halls, Interior Doors, Glass



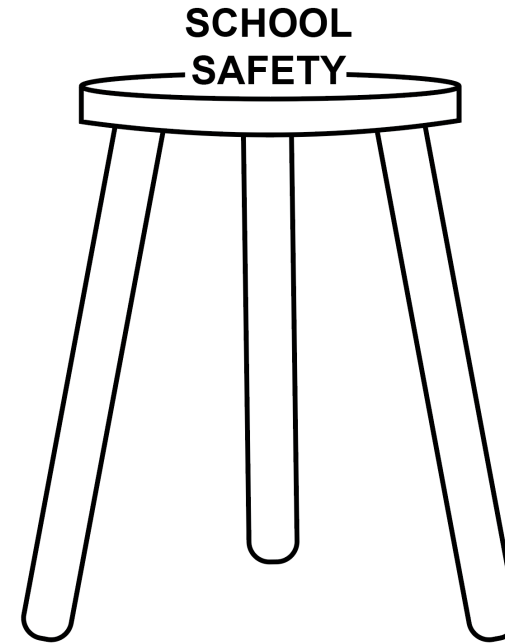
Halls clear visibility, minimize obstacles, reduce fire load, minimize hiding
Lockable interior doors, easy operation
Security film, fortify glass

Best Practices



Post rules, inform
Utilize surveillance, cameras and staff
Assess regularly, use data to improve

Best Practices



The foundation for success most often comes down to behavior, clearly communicated protocols, expectations and follow-up.

Equipment and facilities are tools to help.
Strive to avoid over-reliance on them to solve all problems.

Develop priorities, goals and objectives.
Focus on behavior, training, and relationships.