



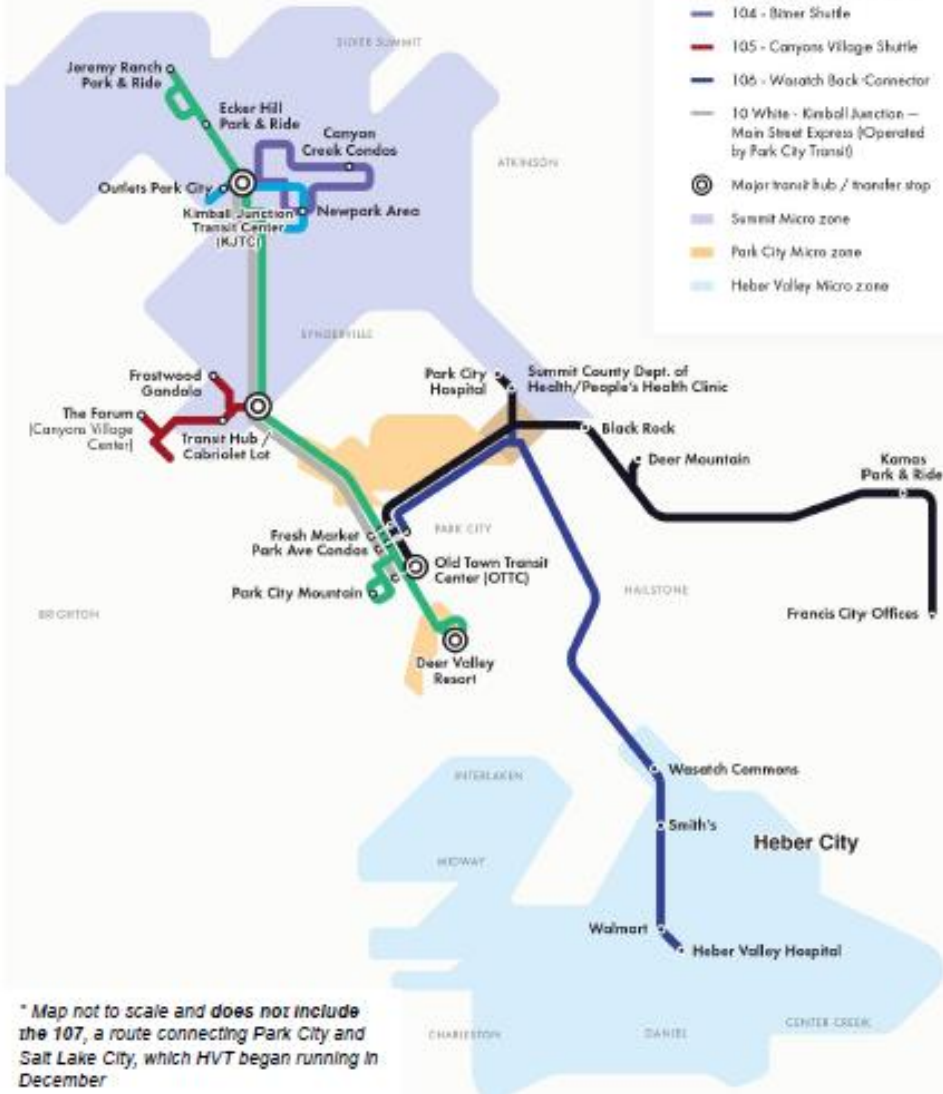
High Valley
TRANSIT

**Building public transit
for the future.**

High Valley Transit Service Map

Legend

- 101 - Spiro / 224 Local
- 102 - Gateway / Kansas Valley Commuter
- 103 - Kimball Junction Shuttle
- 104 - 82nd Shuttle
- 105 - Canyons Village Shuttle
- 106 - Wasatch Back Connector
- 10 White - Kimball Junction - Main Street Express (Operated by Park City Transit)
- Major transit hub / transfer stop
- Summit Micro zone
- Park City Micro zone
- Heber Valley Micro zone



* Map not to scale and does not include the 107, a route connecting Park City and Salt Lake City, which HVT began running in December

Fixed route ridership:



787K+
rides served in 2022

Micro ridership:



173K+

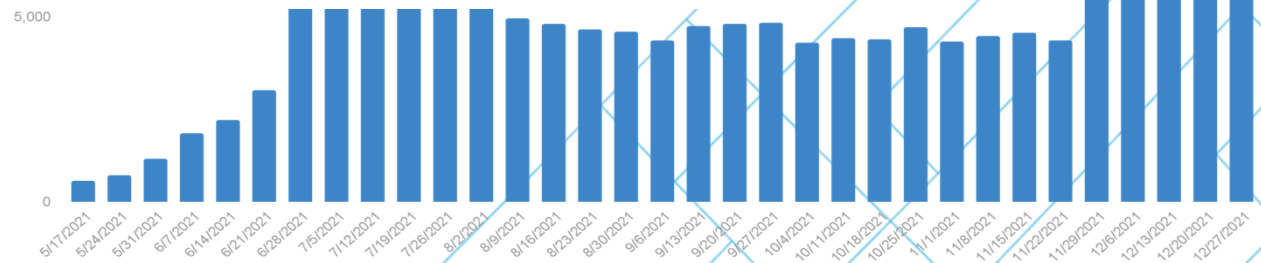


4.1
average

Fixed route growth:



47%
increase in ridership in Dec 22 vs Dec 21



What is High Valley Transit?

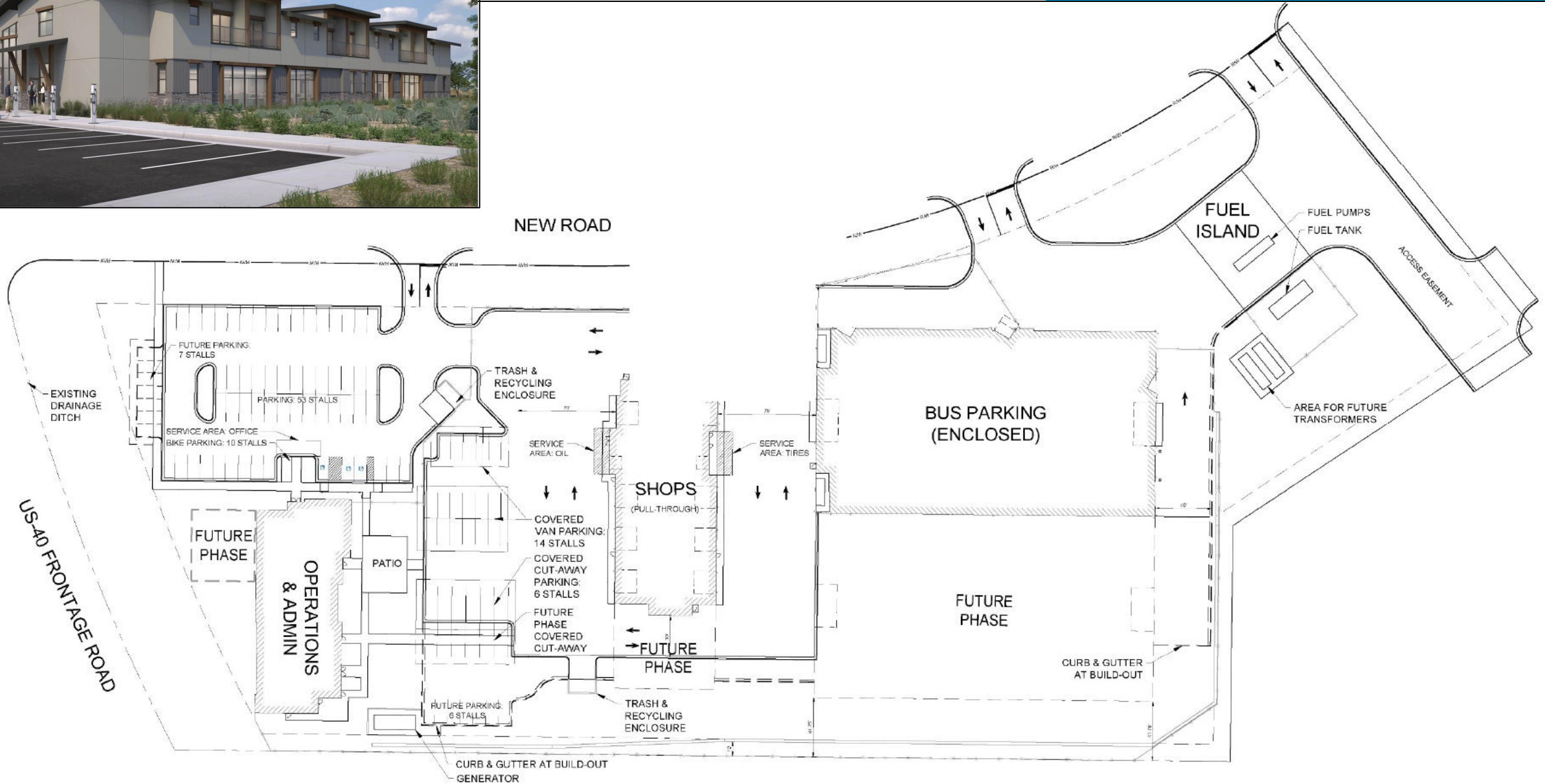


Why transit? ³



Current “operations” facility

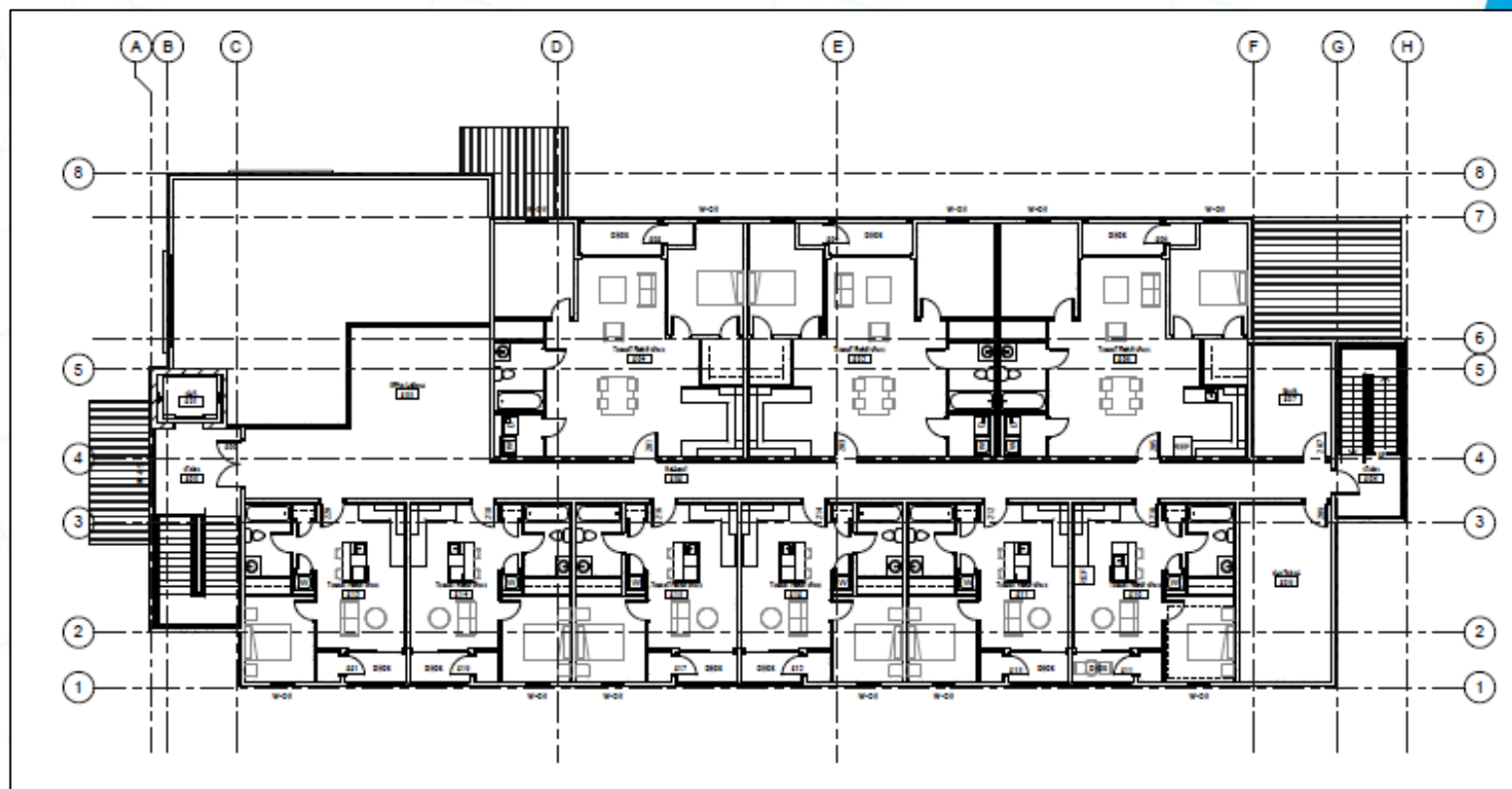
1608 Sego Lily Way





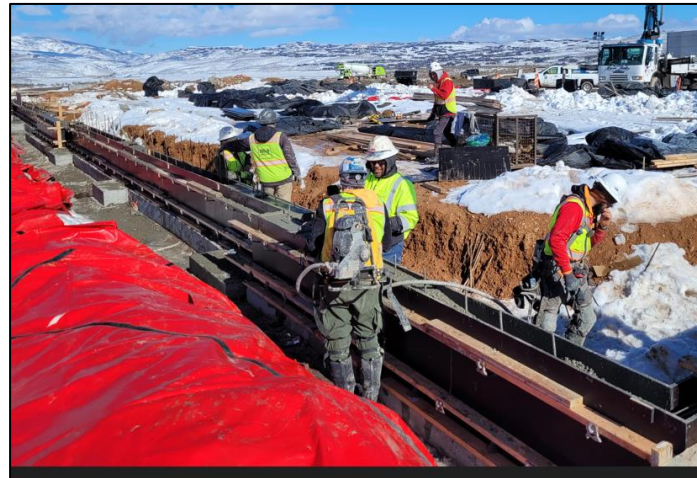
1608 Sego Lily Way *Workforce Housing*

- Nine units
- Mix of types
- Cost controlled
- Directly administered by HVT in-house



Facility Funding

Description		Type	Amount
Total Project, incl. land:			\$45,394,577
Less: Addtl HVT costs (already paid):		Local	(\$8,070,869)
Total construction cost			\$37,323,708
<u>Sources</u>			
HVT cash on hand		Local	\$5,503,010
Bond issuance (2022)		Local	\$10,000,000
Committed	FFY 2024 5339 Capital Construction	Federal	\$1,680,800
	CRRSAA/ARPA	Federal	\$7,964,348
	Transit Sales Tax grant (Summit County 3rd Q)	Local	\$3,775,550
Requested	Local Project (B. Moore)	Federal	\$3,000,000
	Potential Wasatch County Contribution	Local	\$400,000
	2024 RFA - R. Winterton (current request)	State	\$5,000,000





High Valley
TRANSIT

Kim Carson, Chair
Board of Trustees
kcarson@highvalleytransit.org

Caroline Rodriguez
Executive Director
crodriguez@highvalleytransit.org

Moving the Wasatch Back forward with
sustainable, innovative, and desirable transit

