



LEGISLATIVE
AUDITOR
GENERAL

A Systemic Performance Audit of the Park City School District

Public Education Appropriations Subcommittee
January 31, 2024



Chapters 1 & 2

The Park City School District Needs to Improve Its Compliance

Internal controls are actions and policies that increase the likelihood for organizational success.





District Properties Exist Within a Patchwork of Environmental Regulations



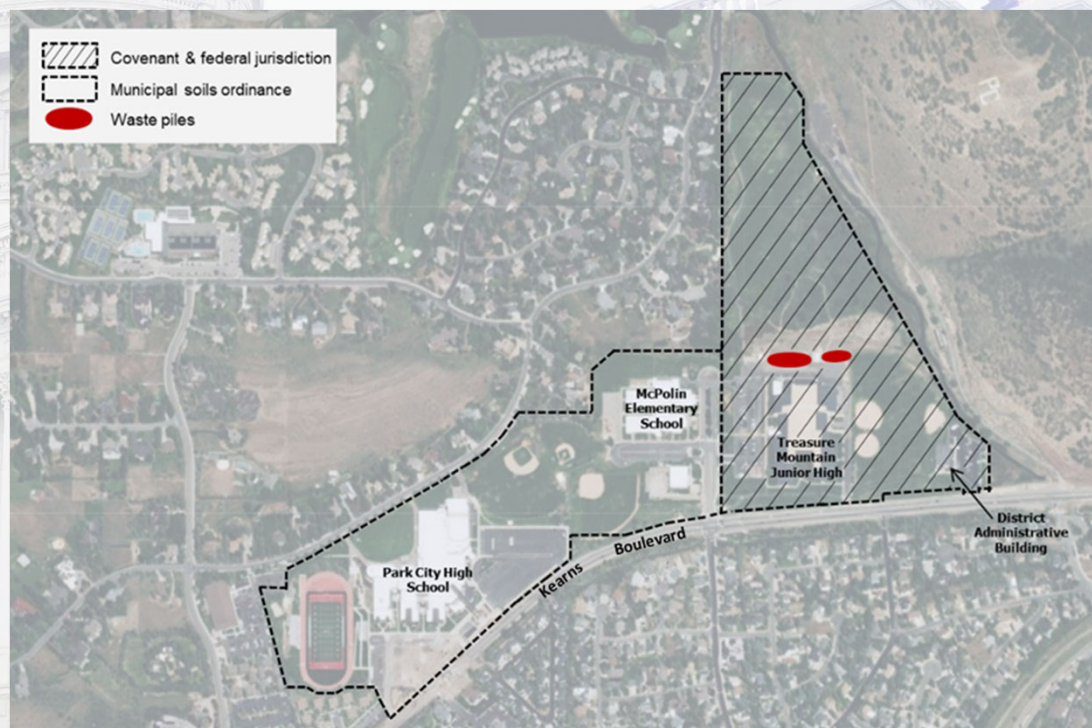
2006: Park City municipal extended soils ordinance to include district properties on Kearns Boulevard



2016: EPA brought the Treasure Mountain Junior High into federal jurisdiction and completed a cleanup action



2016: District imposed an environmental covenant with land use requirements and restrictions





Lack of Internal Controls Led to Noncompliance and Additional Costs



District has not implemented sufficient internal controls



In the last five years, the district has moved contaminated dirt and other materials



Disposal costs were estimated to be as much as \$3 million

The District Needs to Improve Its Compliance with School Construction Regulations



Park City School District does not appear to have met some state and local construction requirements



State and local regulators either requested or enforced shutdowns of the district's construction due to noncompliance



Shutdowns due to noncompliance introduced delays and increased costs



Chapter 3

The District Can Increase Accountability for Underperforming Student Populations



District Can Do More to Provide Oversight for Student Groups Needing Targeted Support



USBE identified multiple underperforming student groups



Gap in English Language Arts proficiency persists despite additional requirements to support students



The district could provide additional oversight

2018

14.8%

49.0%

2019

16.8%

51.4%

2022

15.2%

50.7%

Average Percent Proficient

Student Group Categories

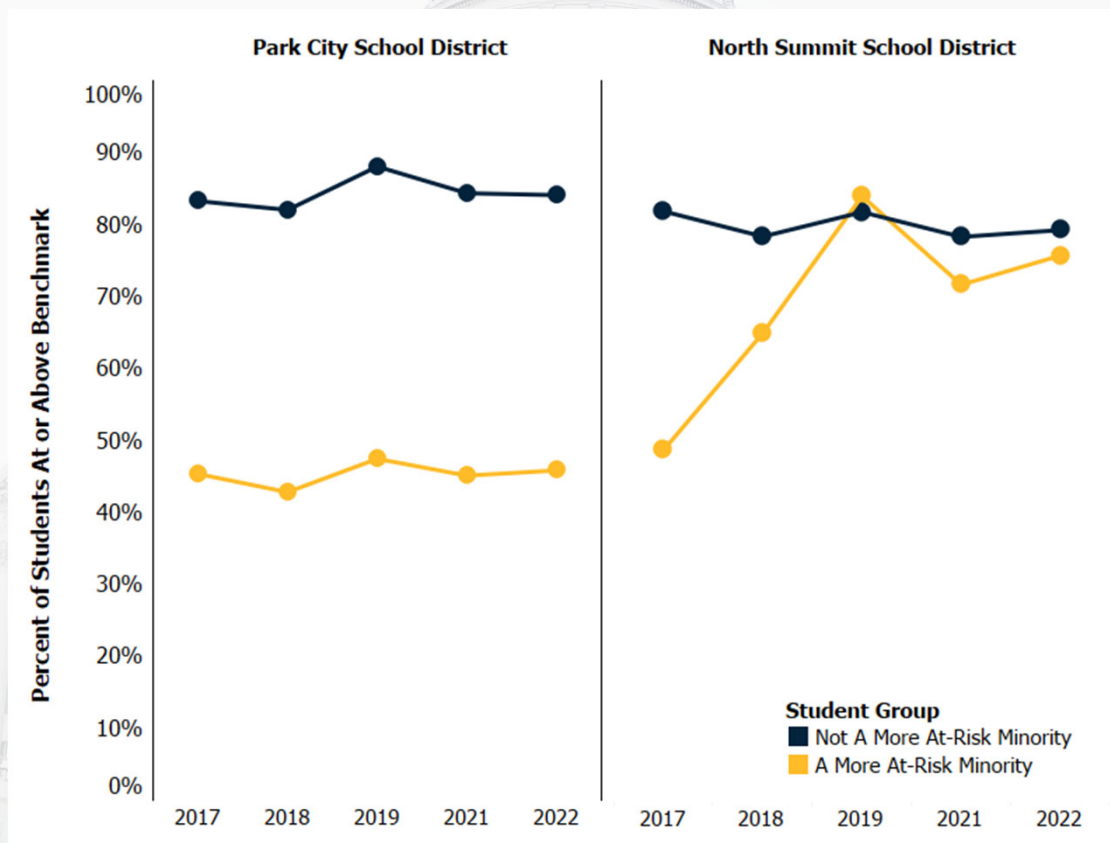
■ ATSI Student Groups

■ Non ATSI Student Groups





A Peer District Is Closing the Literacy Achievement Gap For At-Risk Students





Chapter 4

Improved Strategic Planning Can Help the Park City School District Make Informed Decisions and Set Meaningful Goals

The District's Strategic Planning Could Be Improved





A strategic plan can empower LEAs to make informed decisions, align resources, and navigate the complexities of educating students with a long-term vision in mind.



Chapter 5

The District's Use of a Student Analytic Tool Is Encouraging, but More Can Be Done



The District's Analytical Tool Uses Student Data to Predict Student Growth



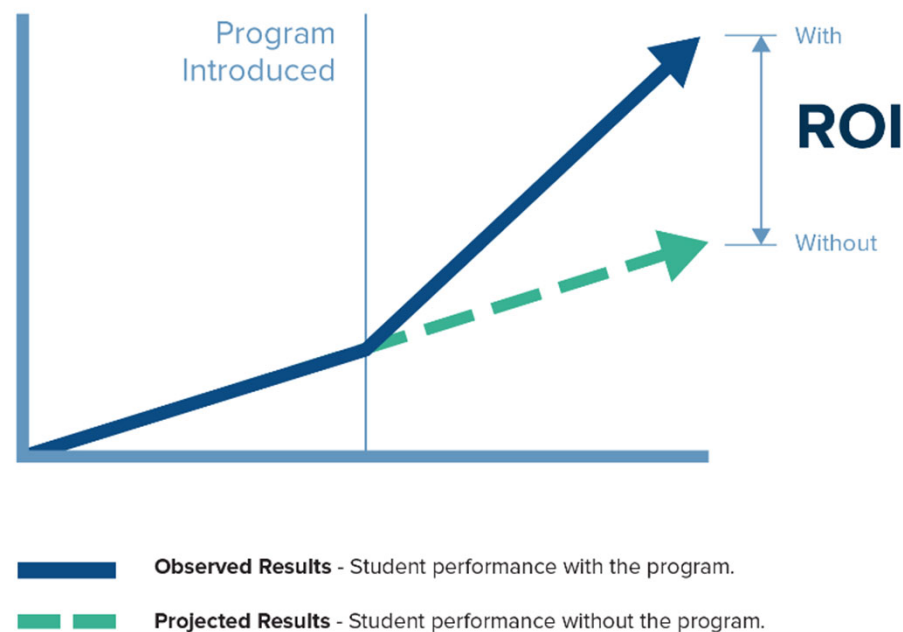
Tool enables the district to calculate program ROI



Tool helps the district hold schools accountable for expected performance



Additional use of the tool can help the district target student improvement





Summary

Questions



**LEGISLATIVE
AUDITOR
GENERAL**