



# DIVISION OF WILDLIFE RESOURCES LAND PURCHASE

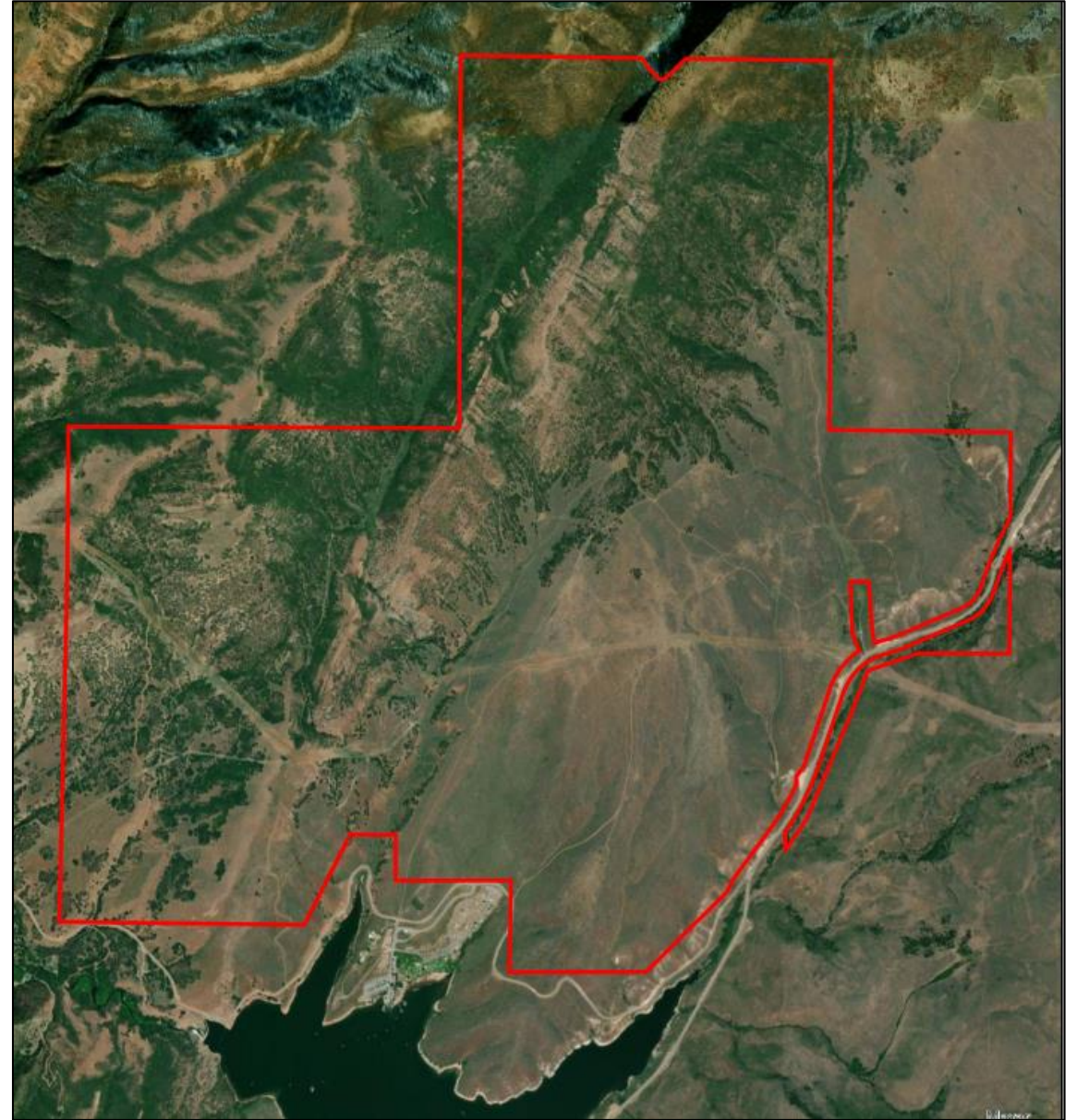
## REQUESTED BY: SEN. MILLNER, A.

---

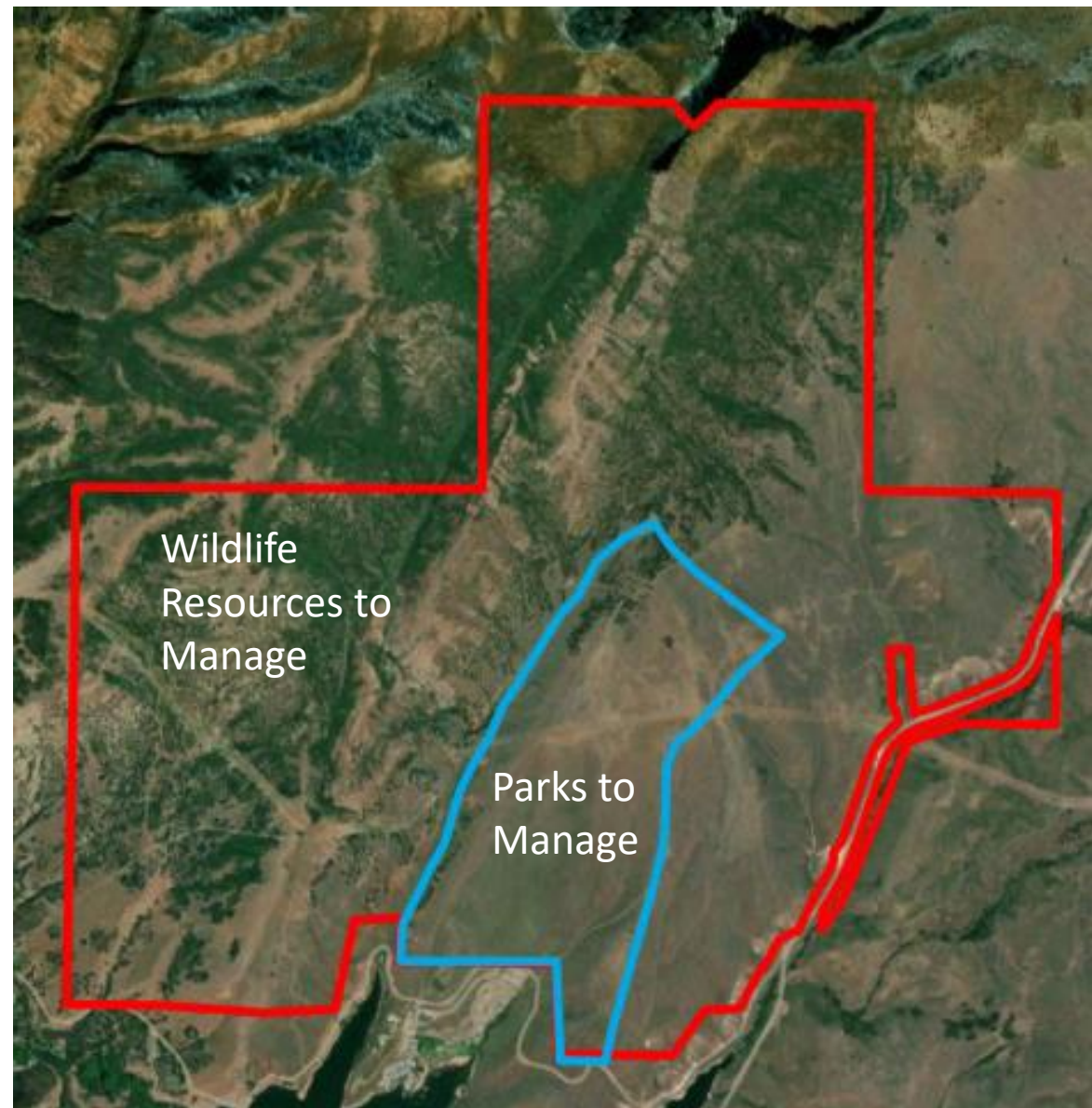
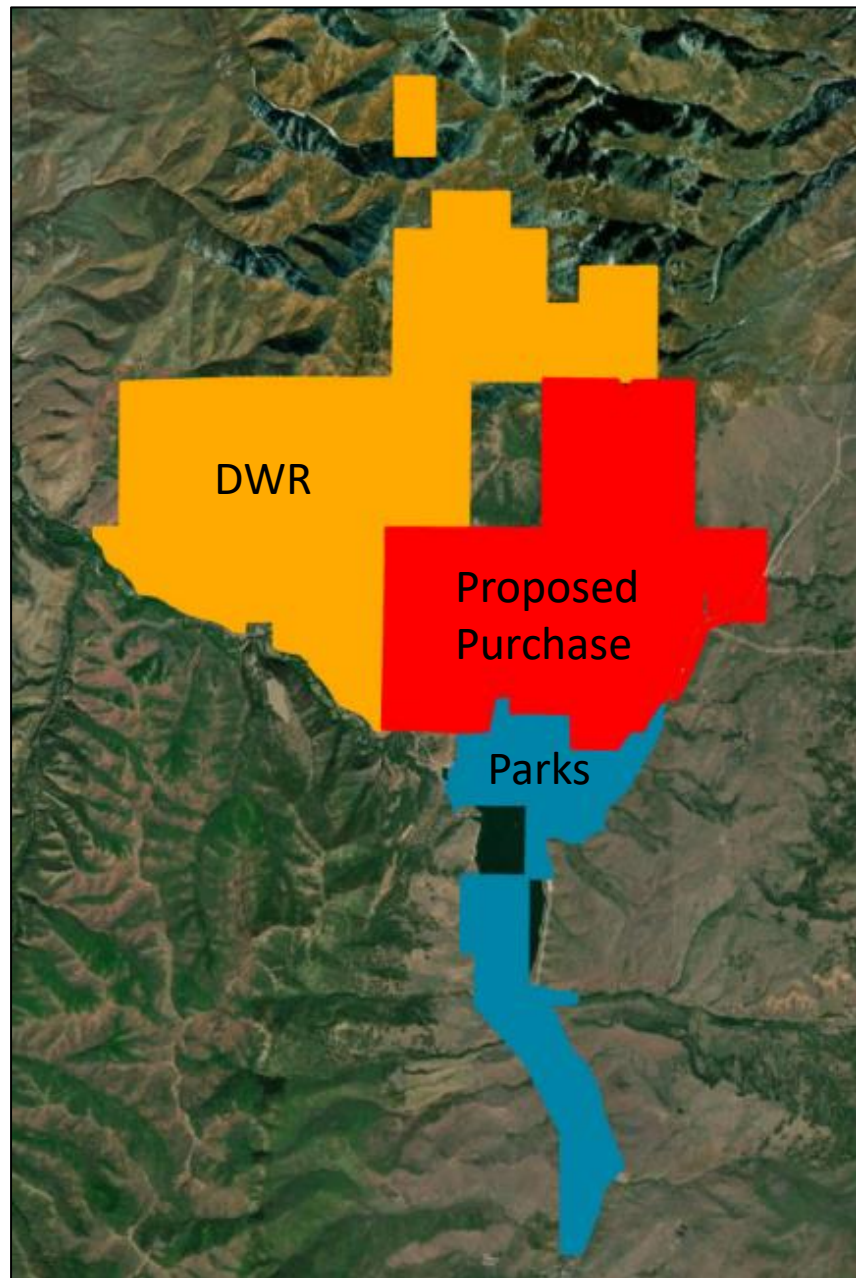
“The primary focus for the purchase of this land is the preservation of wildlife and outdoor recreation. This valuable land will also safeguard the historical Mormon Trail, and will increase camping, hiking, and other family-friendly activities within the vicinity of East Canyon State Park. We have secured 10 million in matching funds from Parks and DWR.”



- Located in Morgan County
- ~2,500 acres
- Expansion of both East Canyon Wildlife Management Area and East Canyon State Park
- Mormon Trail preservation
- Big game habitat
- Future recreation opportunities







# STATE PARKS

---

- The proposed purchase area seeks to enhance public outdoor access
- Plans involve creating a new campground with 50-70 campsites, catering to individual and group campers
- These improvements align with the collective goal of providing a diverse range of outdoor enthusiasts with ample opportunities to connect with nature, fostering a greater appreciation for the expansive beauty this land has to offer





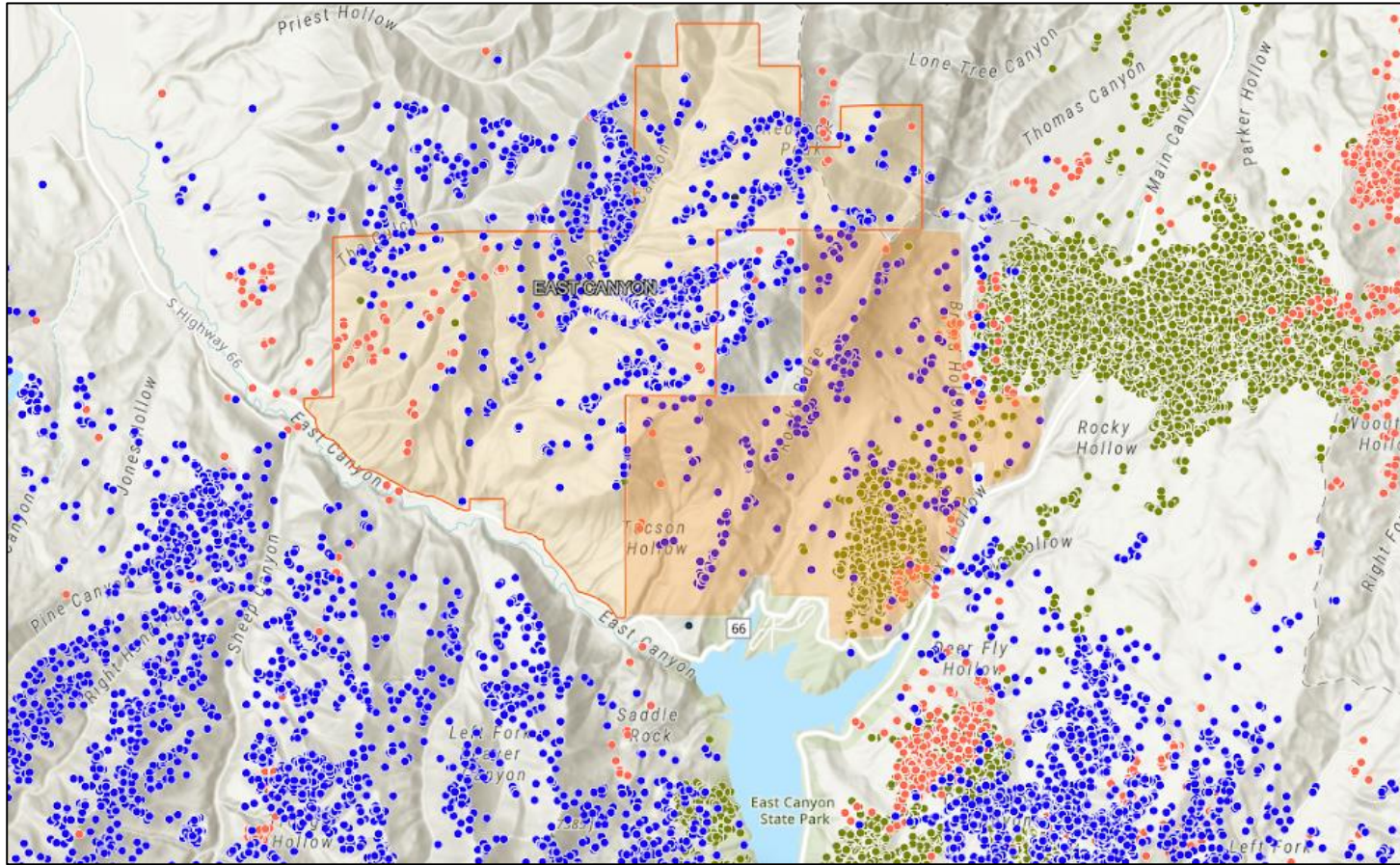
# WILDLIFE RESOURCES

---

- The property provides winter and summer habitat for deer, elk, sage grouse, forest grouse and other wildlife species
- The area contains a deer migration corridor and a sage grouse lek
- Most of the property is within the Rich-Morgan-Summit Sage Grouse Management Area (SGMA)
- Hunting access in an area with limited public land



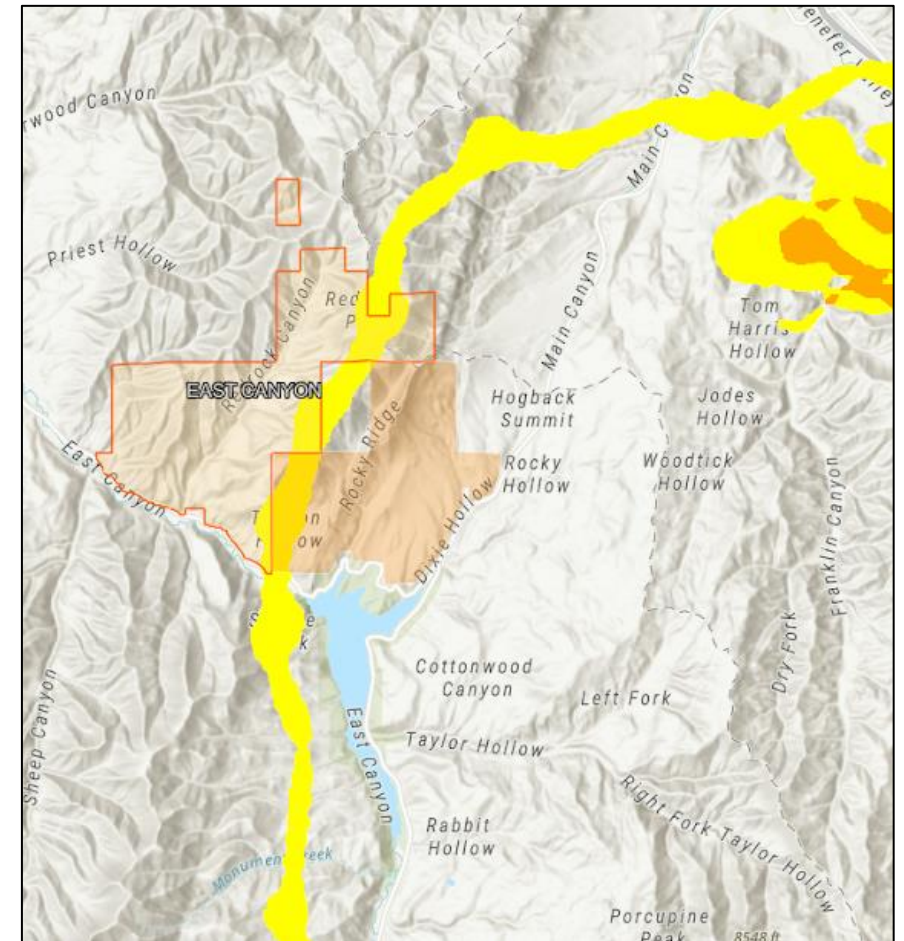




GPS tracking data shows significant usage of the property by:

- Elk (blue and purple)
- Mule deer (red)
- Sage grouse (green)

Yellow and orange lines represent GPS tracking data that shows the deer migration corridor







# Questions?